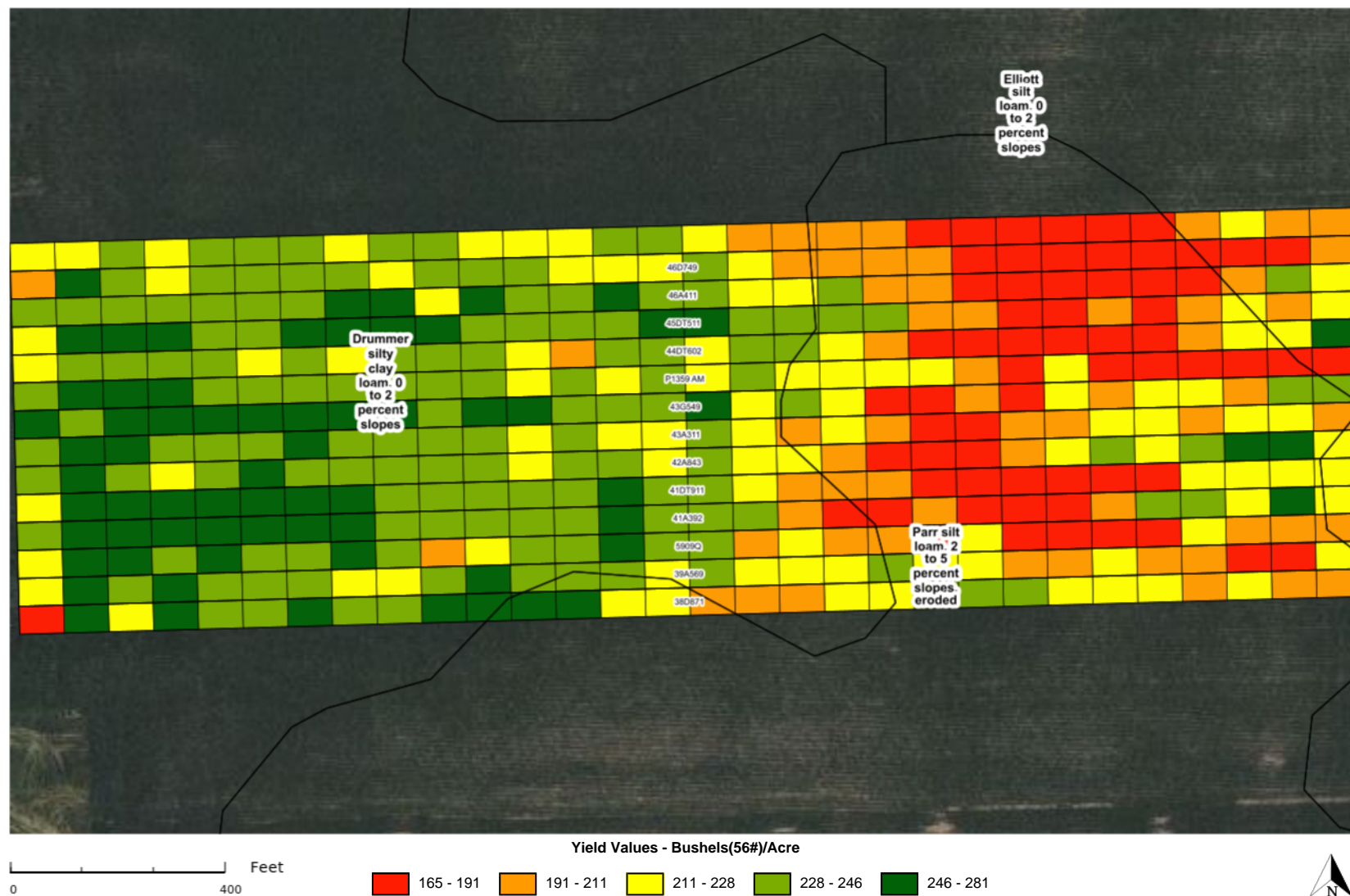


2022 Corn Individual Trial Report

Cooperator: Not Available
Trial County: Vermilion, Illinois
Trial Name: US35 LCO CG FTN 879560909401522
Report Created: Oct 11, 2022

Trial Type: FTN
Planting Date: Apr 29, 2022
Harvest Date: Oct 3, 2022
Planting Rate: 35,500 Seeds/Acre

Previous Crop: Soybeans
Tillage Type: Conventional
Irrigation: No
Row Width: 30 Inches



2022 Corn Individual Trial Report

Cooperator: **Not Available**
 Trial County: **Vermilion, Illinois**
 Trial Name: **US35 LCO CG FTN 879560909401522**
 Report Created: **Oct 11, 2022**

Trial Type: **FTN**
 Planting Date: **Apr 29, 2022**
 Harvest Date: **Oct 3, 2022**
 Planting Rate: **35,500 Seeds/Acre**

Previous Crop: **Soybeans**
 Tillage Type: **Conventional**
 Irrigation: **No**
 Row Width: **30 Inches**

Legend

Soils (Columns in descending order by area)

¹Drummer — Drummer silty clay loam, 0 to 2 percent slopes
²Parr — Parr silt loam, 2 to 5 percent slopes, eroded

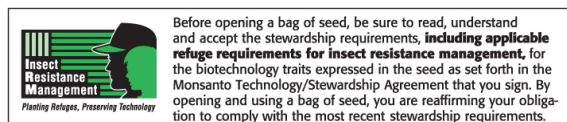
Product Information					Plot Level Data			Yield By Soil	
Plot #	Seed Brand	Product Name	Traits	RM	Yield Rank	Yield	Moisture	Drummer ¹	Parr ²
1	SPECIALTY HYBRIDS	38D871	VT2PRIB	108	5	226.7	17.9	229.0	224.0
2	SPECIALTY HYBRIDS	39A569	SSRIB	109	7	224.2	19.1	232.1	213.7
3	BECK'S	5909Q	QROME	109	9	220.8	19.1	234.6	195.8
4	SPECIALTY HYBRIDS	41A392	SSRIB	111	2	229.2	19.2	240.6	208.8
5	SPECIALTY HYBRIDS	41DT911	TRERIB	111	6	224.6	18.8	243.5	193.7
6	SPECIALTY HYBRIDS	42A843	SSRIB	112	2	229.2	21.8	237.7	216.0
7	SPECIALTY HYBRIDS	43A311	SSRIB	113	8	222.8	20.5	237.1	204.1
8	SPECIALTY HYBRIDS	43G549	DGVT2PRIB	113	1	233.0	20.2	250.7	209.9
9	PIONEER	P1359 AM	AM	113	11	219.3	21.1	236.2	197.9
10	SPECIALTY HYBRIDS	44DT602	TRERIB	114	11	219.3	20.5	230.4	195.7
11	SPECIALTY HYBRIDS	45DT511	TRERIB	115	2	229.2	20.9	245.3	203.4
12	SPECIALTY HYBRIDS	46A411	SSRIB	116	10	220.4	21.9	235.8	190.7
13	SPECIALTY HYBRIDS	46D749	VT2PRIB	116	14	210.0	22.7	226.3	185.0
14	SPECIALTY HYBRIDS	38D388	VT2PRIB	108	13	211.5	18.3	225.9	
Field Average						222.9	20.1	236.1	204.1

Entries with less than 295 feet of row length are not listed for the Yield by Soil results, but are included in the plot averages. All yield values are in bu/acre and are adjusted to 15.0% moisture. Green highlight designates the top five yield values per soil type. Report includes top four soils based on acreage.

SPECIALTY® Corn Legend

VALUE ADDED TRAITS:

- Conv** = Conventional
- RR2** = Roundup Ready® Corn 2
- SS** = SmartStax® corn
- SSRIB** = SmartStax® RIB Complete® corn blend
- VT2P** = VT Double PRO® corn
- VT2PRIB** = VT Double PRO® RIB Complete® corn blend
- VT3P** = Genuity® VT Triple PRO® corn
- VT3PRIB** = Genuity® VT Triple PRO® RIB Complete® corn blend
- DGVT2P** = DroughtGard® Hybrids with VT Double PRO® corn
- DGVT2PRIB** = DroughtGard® Hybrids with VT Double PRO® RIB Complete® corn blend
- DGVT3P** = DroughtGard® Hybrids with Genuity® VT Triple PRO® corn
- DGVT3PRIB** = DroughtGard® Hybrids with Genuity® VT Triple PRO® RIB Complete® corn blend



Bayer is a member of Excellence Through Stewardship® (ETS). Bayer products are commercialized in accordance with ETS Product Launch Stewardship Guidance, and in compliance with Bayer's Policy for Commercialization of Biotechnology-Derived Plant Products in Commodity Crops. Commercialized products have been approved for import into key export markets with functioning regulatory systems. Any crop or material produced from this product can only be exported to, or used, processed or sold in countries where all necessary regulatory approvals have been granted. It is a violation of national and international law to move material containing biotech traits across boundaries into nations where import is not permitted. Growers should talk to their grain handler or product purchaser to confirm their buying position for this product. Excellence Through Stewardship® is a registered trademark of Excellence Through Stewardship.

ALWAYS READ AND FOLLOW PESTICIDE LABEL DIRECTIONS. B.t. products may not yet be registered in all states. Check with your seed brand representative for the registration status in your state.

IMPORTANT IRM INFORMATION: RIB Complete® corn blend products do not require the planting of a structured refuge **except** in the Cotton-Growing Area where corn earworm is a significant pest. **See the IRM/Grower Guide for additional information. Always read and follow IRM requirements.**

Performance may vary, from location to location and from year to year, as local growing, soil and weather conditions may vary. Growers should evaluate data from multiple locations and years whenever possible and should consider the impacts of these conditions on the grower's fields.

Roundup Ready® 2 Technology contains genes that confer tolerance to glyphosate. **Glyphosate** will kill crops that are not tolerant to glyphosate. Herculex® is a registered trademark of Dow AgroSciences LLC. LibertyLink® and the Water Droplet Design® is a trademark of BASF Corporation. Respect the Refuge and Corn Design® and Respect the Refuge® are registered trademarks of National Corn Growers Association. DroughtGard®, Specialty and Design® and Specialty Hybrids™, RIB Complete®, Roundup Ready 2 Technology and Design™, Roundup Ready®, SmartStax®, VT Double PRO® and VT Triple PRO® are trademarks of Bayer Group. ©2020 Bayer Group. All rights reserved.