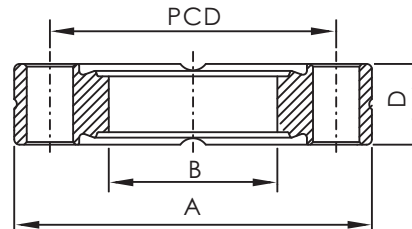


CF Flanges



CF DOUBLE FACE FLANGES

*Material: SS 304L

*Through Holes

| Part Number | Flange Size | A (mm) | B (mm) | D (mm) | PCD (mm) | Bolt Holes | Diameter (mm) / Thread Type |
|-----------------|------------------|--------|--------|--------|----------|------------|-----------------------------|
| CF-DF-133 | CF1.33" (DN16) | 33.70 | - | 7.60 | 26.97 | 6 | 4.37 |
| CF-DF-133x075 | CF1.33" (DN16) | 33.70 | 15.88 | 7.60 | 26.97 | 6 | 4.37 |
| CF-DF-212 | CF2.12" (DN25) | 53.80 | - | 11.90 | 41.28 | 4 | 6.73 |
| CF-DF-212x100 | CF2.12" (DN25) | 53.80 | 25.65 | 11.90 | 41.28 | 4 | 6.73 |
| CF-DF-275 | CF2.75" (DN40) | 69.30 | - | 12.70 | 58.72 | 6 | 6.73 |
| CF-DF-275x150 | CF2.75" (DN40) | 69.30 | 38.35 | 12.70 | 58.72 | 6 | 6.73 |
| CF-DF-338 | CF3.38" (DN50) | 85.30 | - | 16.00 | 72.39 | 8 | 8.43 |
| CF-DF-338x200 | CF3.38" (DN50) | 85.30 | 51.05 | 16.00 | 72.39 | 8 | 8.43 |
| CF-DF-450 | CF4.50" (DN63) | 113.50 | - | 17.40 | 92.15 | 8 | 8.43 |
| CF-DF-450x250 | CF4.50" (DN63) | 113.50 | 63.75 | 17.40 | 92.15 | 8 | 8.43 |
| CF-DF-462 | CF4.62" (DN80) | 117.00 | - | 19.10 | 102.36 | 10 | 8.43 |
| CF-DF-462x300 | CF4.62" (DN80) | 117.00 | 79.71 | 19.10 | 102.36 | 10 | 8.43 |
| CF-DF-600 | CF6.00" (DN100) | 151.60 | - | 19.80 | 130.25 | 16 | 8.43 |
| CF-DF-600x400 | CF6.00" (DN100) | 151.60 | 101.85 | 19.80 | 130.25 | 16 | 8.43 |
| CF-DF-675 | CF6.75" (DN130) | 170.69 | - | 21.34 | 151.61 | 18 | 8.43 |
| CF-DF-675x500 | CF6.75" (DN130) | 170.69 | 127.25 | 21.34 | 151.61 | 18 | 8.43 |
| CF-DF-800 | CF8.00" (DN160) | 202.44 | - | 22.35 | 181.05 | 20 | 8.43 |
| CF-DF-800x600 | CF8.00" (DN160) | 202.44 | 152.65 | 22.35 | 181.05 | 20 | 8.43 |
| CF-DF-1000 | CF10.00" (DN200) | 253.24 | - | 24.60 | 231.85 | 24 | 8.43 |
| CF-DF-1000x800 | CF10.00" (DN200) | 253.24 | 203.45 | 24.60 | 231.85 | 24 | 8.43 |
| CF-DF-1325 | CF13.25" (DN270) | 335.79 | - | 28.45 | 306.32 | 30 | 10.49 |
| CF-DF-1325x1000 | CF13.25" (Dn270) | 335.79 | 254.50 | 28.45 | 306.32 | 30 | 10.49 |

*Note: SS 316LN Material available on Request.