

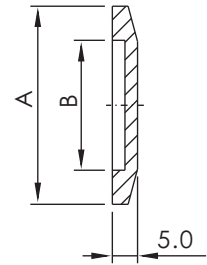
# KF Flanges



## KF BLANK FLANGES (WITHOUT BOSS)

\*Material: SS 304L/ Aluminum

Part Number (SS 304L)	Part Number (Aluminum)	Flange Size	A	B
KF-BL1-10	KF-BL1-10-AL	KF10	29.97	12.27
KF-BL1-16	KF-BL1-16-AL	KF16	29.97	17.27
KF-BL1-25	KF-BL1-25-AL	KF25	39.88	26.16
KF-BL1-40	KF-BL1-40-AL	KF40	54.86	41.15
KF-BL1-50	KF-BL1-50-AL	KF50	74.93	52.32



\*Note: SS 316L Material Available on Request.

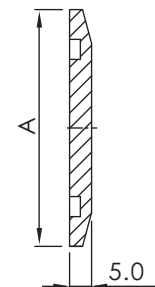
**K F  
D N**



## KF BLANK FLANGES (WITH BOSS)

\*Material: SS 304L/ Aluminum

Part Number (SS 304L)	Part Number (Aluminum)	Flange Size	A
KF-BL2-10	KF-BL2-10-AL	KF10	30.00
KF-BL2-16	KF-BL2-16-AL	KF16	30.00
KF-BL2-25	KF-BL2-25-AL	KF25	40.00
KF-BL2-40	KF-BL2-40-AL	KF40	55.00
KF-BL2-50	KF-BL2-50-AL	KF50	75.00



\*Note: SS 316L Material Available on Request.