



## Leice Wind 3D 6000

### 3D Scanning Full Sky View Wind LiDAR

#### Product Description

Based on the principle of optical pulse coherent Doppler shift detection, Wind3D 6000 can realize the fine detection of the 3D wind field of the middle and lower troposphere (including the atmospheric boundary layer).

High precision optical scanning mirror for 3D scanning detection.

(DBS/VAD/PPI/RHI/CAPPI fixed-point scanning mode), the detection radius can be up to 6km.

In order to meet complex wind measurement requirements such as complex terrain wind field, wind turbine wake, remote virtual wind tower at sea, and stereoscopic distribution of atmospheric pollutants, we have specially developed lidar 3D stereo scanning, virtual wind tower, multi-lidar coordination, etc. Detection mode. Providing users with a full range of customized solutions and services.

Functional features and advantages

3D wind field detection: long distance, 3D stereo wind field detection system

High precision: achieved wind cup-level wind measurement accuracy (<0.1m/s), and passed IEC61400-12-1:2017 international standard inspection

Large range: detection radius >6km (expandable)

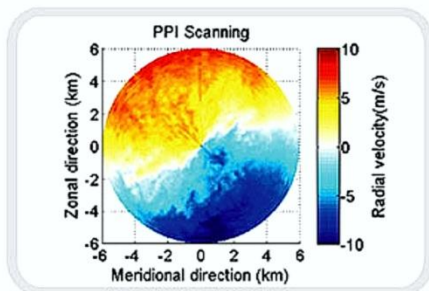
Multi-scan mode: DBS/VAD/RHI/PPI/CAPPI virtual wind tower, etc. , and support for Lidar script programming.

High resolution: data refresh rate : 10Hz distance resolution :15m

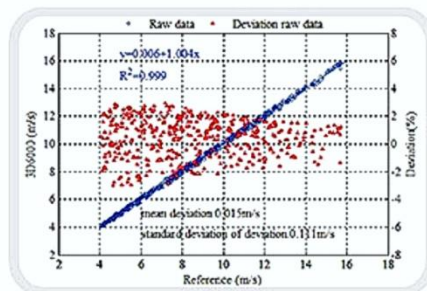
Flexible deployment: small size, light weight, low power consumption, and easy to build and transfer in the field

Automatic unattended observation: remote networked data acquisition and device monitoring

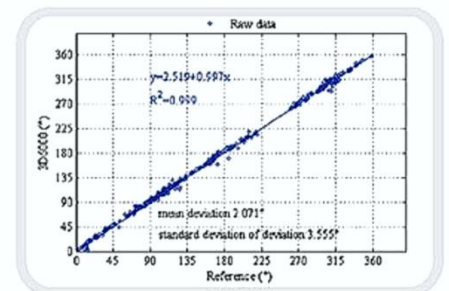
Strong robustness: continuous and stable operation in harsh environments on land and at sea



Wind3D 6000 6km PPI Scan



Wind speed correlation analysis



Wind direction correlation analysis

## Leice Wind 3D 6000

### 3D Scanning Full Sky View Wind LiDAR

#### Technical specifications

##### Specifications

Wavelength	1.5 $\mu$ m, Eye-safe
Radial detection range	45m~6000m
Radial range resolution	15m/30m/configurable
Data updating rate	1Hz~10Hz (configurable)
Radial wind speed range	-37.5m/s~37.5m/s
Radial Wind speed accuracy	$\leq$ 0.1m/s
Scanning servo accuracy	$\pm$ 0.1 $^{\circ}$
Detection modes	DBS/ VAD/ PPI/ RHI/ VOL/ fixed point / CAPPI/ virtual tower stare (VTS)/ Glide Path Scan (GPScan) / multi-lidar measurement
Data product	DBS/ VAD Wind profile, vertical flow, RHI/PPI/ CAPPI radial velocity, virtual tower stare (VTS), turbulence wake, wake vortex, wind shear, backscatter intensity, multi-lidar measurement, GNSS position, lidar status, temperature, humidity, pressure
Weight	< 90kg

