


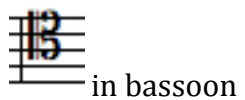
# FIRST SUITE IN E<sup>b</sup>

MVT. 1 CHACONNE

Gustav Holst

<p><u>KEYS</u></p> 	<p><u>GRADE</u></p> <p>4</p>	<p><u>PERCUSSION REQUIREMENTS</u></p> <p>Side Drum Cymbal Bass Drum</p>	
<p><u>METER</u></p> <p><b>3/4</b></p>	<p><u>NUMBER OF MEASURES</u></p> <p>131</p>	<p><u>PERFORMANCE TIME</u></p> <p>4:49</p>	<p><u>PUBLISHER</u></p> <p>Boosey &amp; Co. Ltd. (1921)</p>
<p><u>GENRE</u></p> <p>Fist movement of a wind band masterwork</p>			

**TECHNICAL CONSIDERATIONS**



Accidentals  
Off beat entrances



*Pesante*  lines  
Solos



Percussion rolls  
Tempo changes  
Soli



**TEMPO(S)/STYLE(S)**

Allegro Moderato

Maestoso

Rit. al fine

*Legato*  
*Pesante*  
*Maestoso*  
*Brillante*

**SOLOS**

Cornet 1  
French Horn 1  
Flute  
Trombone 1  
Trombone 2  
Trombone 3  
Oboe 1  
Eb Clarinet 1  
Alto Sax  
Euphonium

**CUES**

Oboe 1 in Clarinet 2

**VOCABULARY**

Allegro Moderato  
Legato  
a2  
stacc.  
Tutti  
Brillante  
Pesante  
Dim.  
Solo  
Soli  
Arco/Pizz.  
Rit. al fine

**DYNAMICS**

*pp*

*p*

*mf*

*f*

*ff*



*dim.*



*cresc.*

*cresc. poco a poco*

**ARTICULATIONS**

Staccato

Accents

Phase markings

Slurs

Ties

**CONDUCTOR CONSIDERATIONS**

Phrasing  
Legato conducting  
Balance and blend  
Dynamic contrast  
Tempo changes  
Conducting style changes