

TIFFANY BOTTOM'S TRAIN RIDE

When: Saturday Sept. 21st 2019 at 1 PM (Please be at the loading area by 12:45PM)

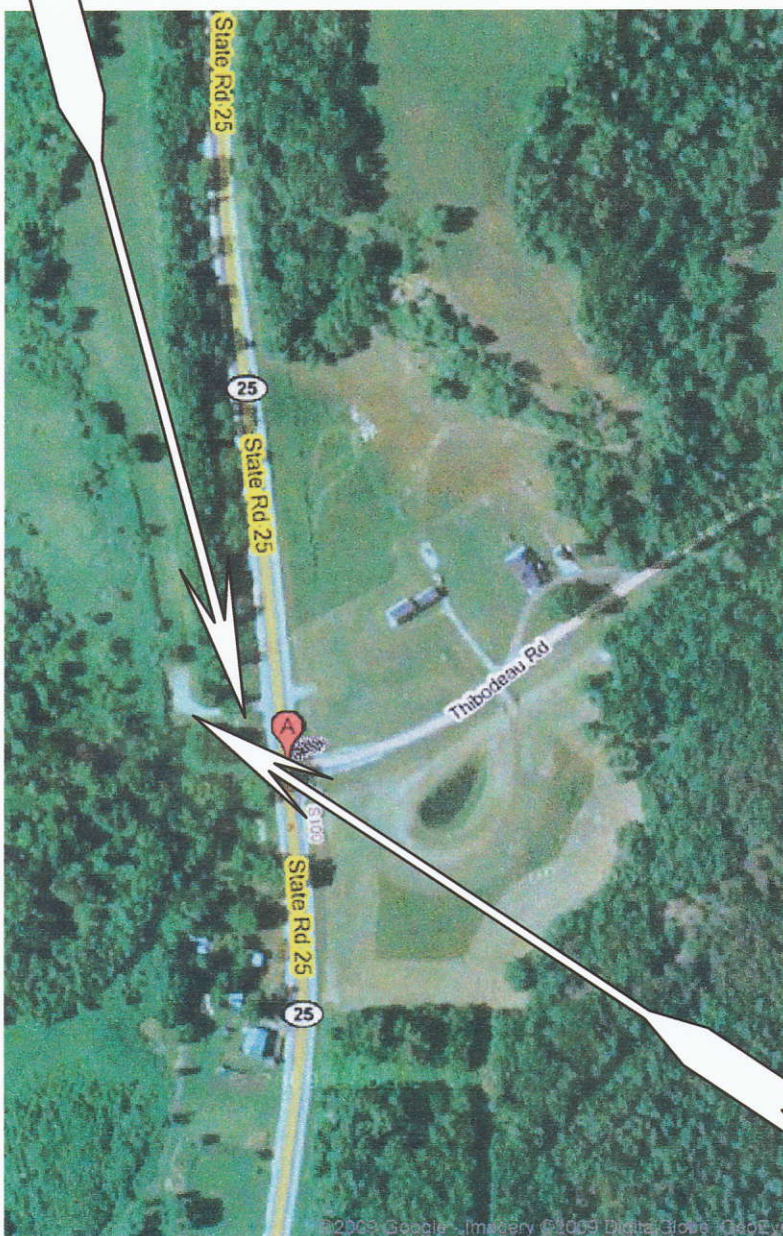
Where: At the Junction of Thibodeau Road and State Road 25 Durand, WI. (Location is about 3 miles South of Durand. Use Google Maps or GPS for a customized route)

What: A railway speeder train ride in the Tiffany Wildlife Area. The Tiffany is a 13,000 acre wilderness area owned and managed by the Wisconsin DNR. The Chippewa Valley Motorcar Assn leases the rails and right of way of the former Milwaukee Rd Railroad from Xcel Energy. The ride is about 10 miles total and we plan to make several stops for photos and short hikes into the Tiffany from the tracks. We should be back to the loading area by 4 PM.

Parking: Please park in the DNR lot on the west side of SR 25. Watch for signage and flag person. The parking lot is across the tracks and down a small hill.

The Train: The train is made up of 2 powered cars and several open unpowered railway maintenance cars. The seats are wooden so a cushion might be wise for comfort.

TRAIN LOADING



Bring a picnic lunch if you wish. We ask that you keep any coolers to minimum size and that you not bring any alcoholic beverages for insurance reasons.

These cars are open to the elements so please dress accordingly.

Please note we will be doing some walking in a wilderness area and we recommend good sturdy footwear. At this time of the year, insects are usually not an issue, but you may wish to bring insect repellent just in case.

We do run these trips Rain or Shine.

Restroom facilities in the form of our "biffy wagon" (a porta john on railway wheels) will be available whenever the train is stopped.

Donations are accepted.



PARKING