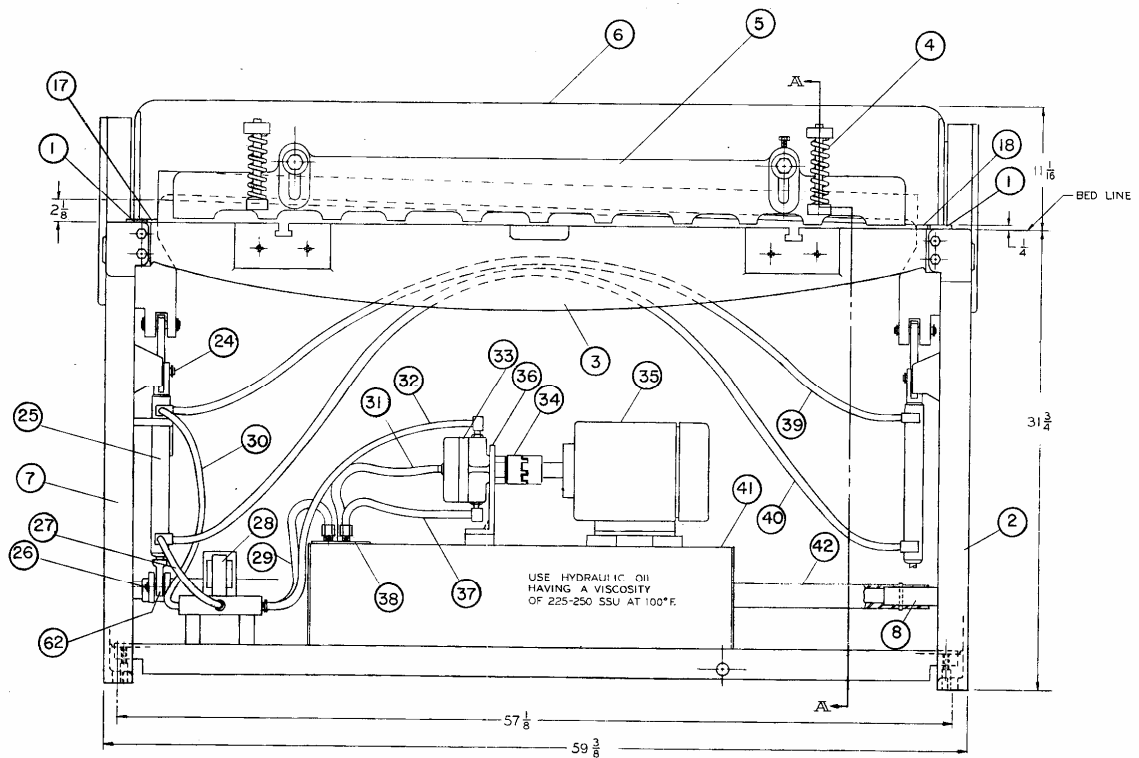
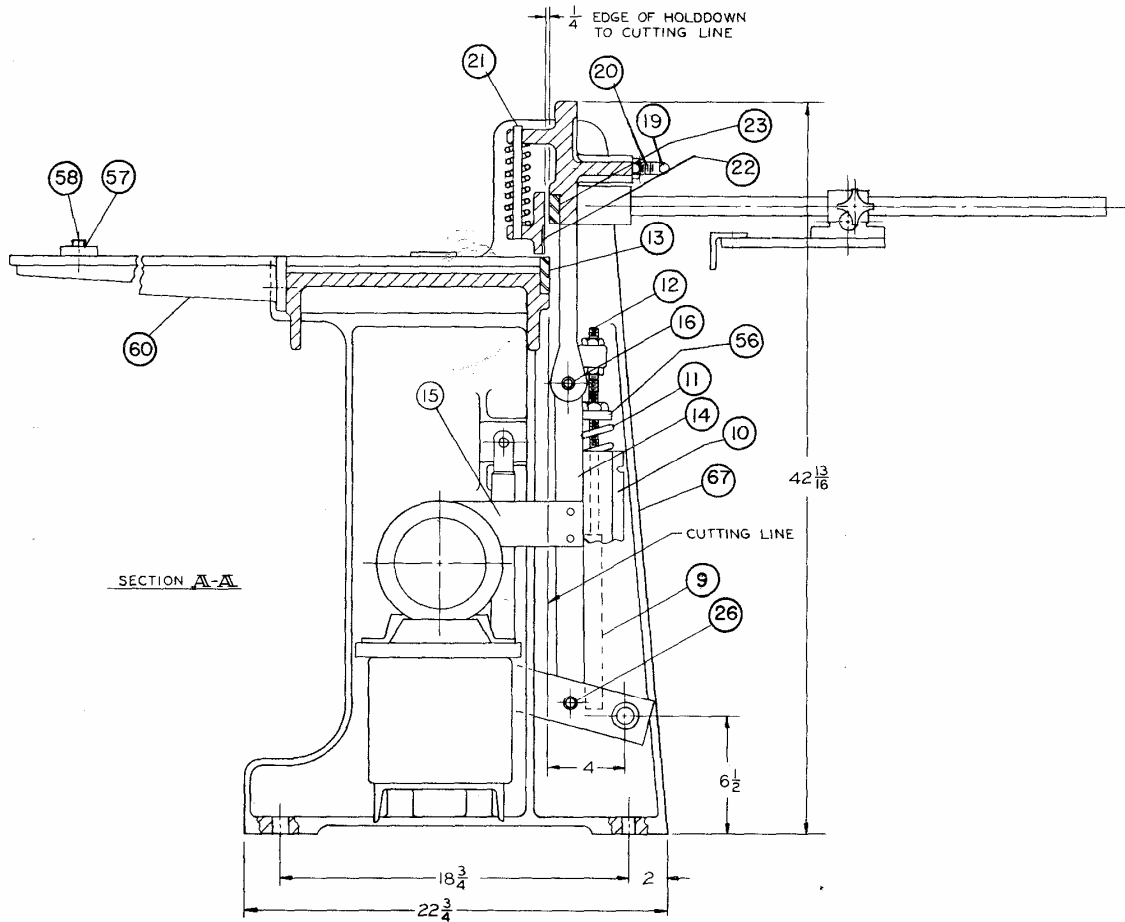


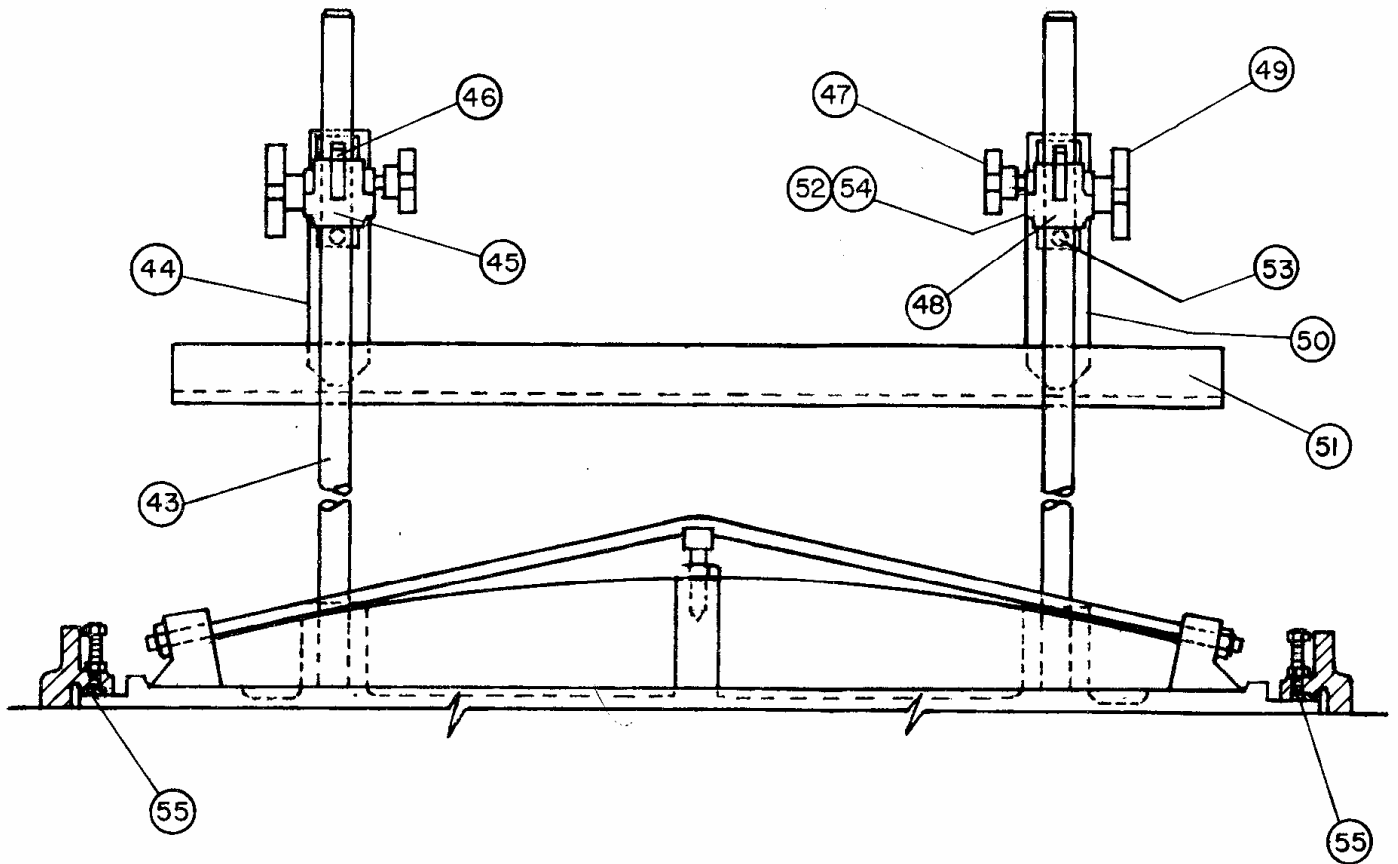
# H-52 HYDRAULIC SHEAR



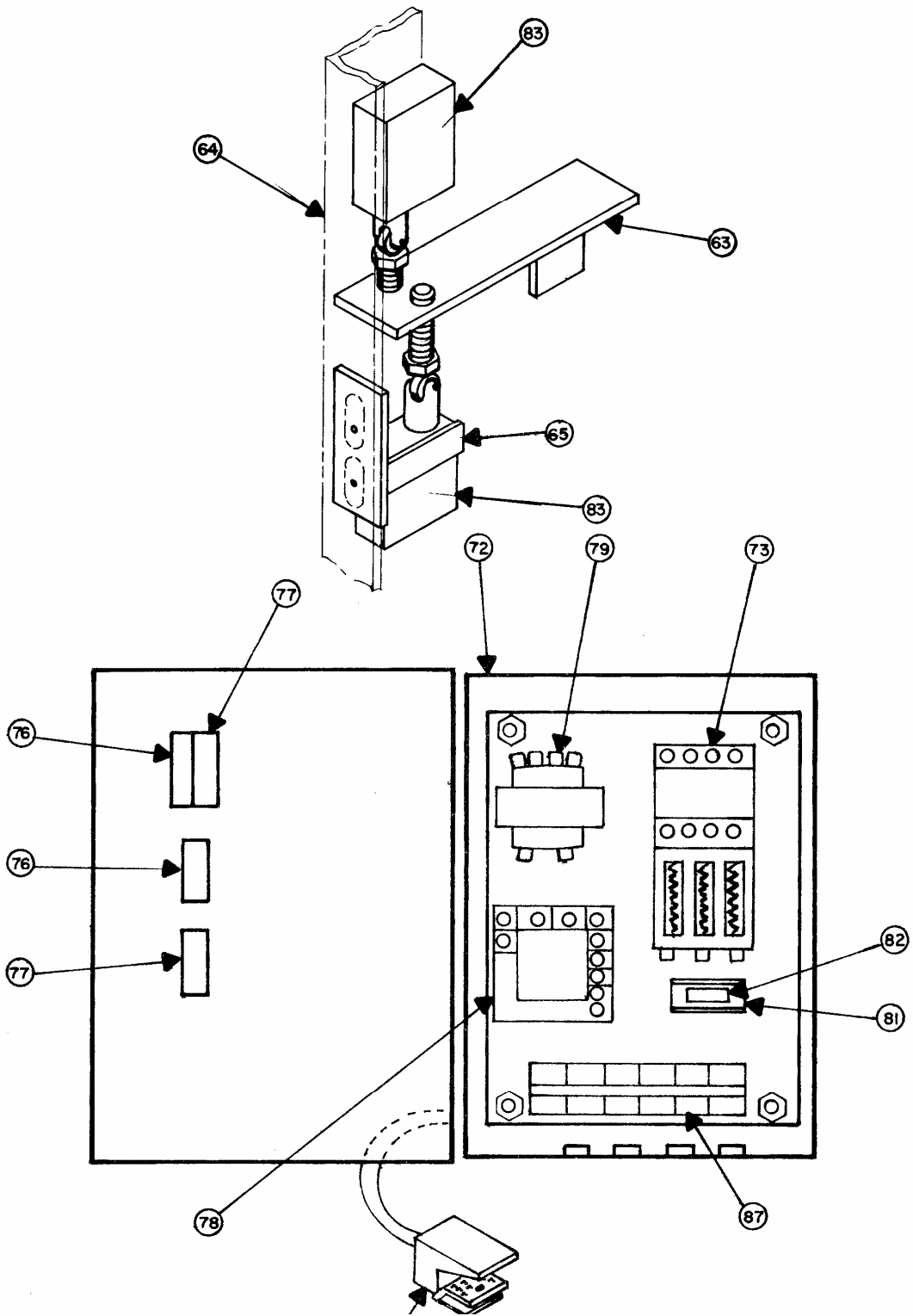
Item No.	Qty.	Description	Part Number
1	2	Clamp Plates	F0S-248
2	1	RH End Housing	F0-248
3	1	Table	F0C-049
3A	4	Table Bolts, 5/8-11 x 4 1/2"	3504-364
4	2	Springs, B-55	3504-204
5	1	Holddown	F0C-003
6	1	Knife Bar	F0C-002
7	1	LH End Housing	F0-47
8	2	Treadle Bearing Studs	F0S-013
17 & 18	2	Side Gauges	6467-040
18A	1	RH Table Scale	2201-052
18B	1	LH Table Scale	2201-051
24	2	Pin, Upper Cylinder	3745-060
25	2	Hydraulic Cylinders, Dukes WMC 1006	3735-160
26	4	Pin, Lower Cylinder and lower Link	3745-061
27	1	Hose, Port B to Rod End	7230-001
28	1	Dennison Direct Valve	3759-120
29	1	Hose, Port T to Tank	7230-002
30	1	Hose, Port A to Head End	7230-003
31	1	Hose, Pump Overflow	7230-004
32	1	Hose, Pump to Port P	7230-005
33	1	Webster Pump (3257-150)	43YB332-R
34	1	Lovejoy Coupling	AL-095
35	1	3 HP. TEFC Lincoln Motor	4218-014
36	1	Webster Bracket	38754-1
37	1	Hose, Pump Inlet	7230-006
38	1	Cover, Tank	7130-261
39	1	Hose, Cylinder to Cylinder Head End	7230-007
40	1	Hose, Cylinder to Cylinder Rod End	7230-008
41	1	Tank, Hydraulic	7130-259
42	1	Tube, Torque	7130-253
61	1	Link, RH	7130-255
62	2	Eye, Rod	7130-327



Item No.	Qty	Description	Part Number
9	2	Knife Bar Spring Spacer	F0S-005
10	2	treadle Spring Guard	7030-057
11	2	Springs, B-56	3504-364
12	2	Knife Bar Spring Rod	F0S-004
13	1	53" x 3" x 5/8" 4-Edge Lower Blade	4720-261
14	1	LH Link	7130-254
15	1	Actuator-Micro Switch	7130-342
16	2	Pin, Upper Link	3745-063
19	1	Knife Bar Tension Rod	F0S-002
20	1	Tension Rod Stud	F0S-003
21	2	Holddown Spring Studs	F0S-015
22	1	Finger Guard	F0S-053
22A	1	Holddown Pinch Point Guard	7430-018
23	1	53" x 3" x 5/8" 2-Edge Upper Blade w/6° Bevel	4724-261
56	4	Spring Seat	F0S-006
57	1	Front Gauge	F0S-016
58	1	Front Gauge Bolts	F0S-017
60	2	Front Extension	F0-007



Item No.	Qty	Description	Part Number
43	2	Back Gauge Racks	7330-003
44	1	Back Gauge Support LH	F0S-44 (7130-378)
45	1	Back Gauge Housing LH	F0-08
46	2	Back Gauge Indicator	F0S-24
47	3	Hand, Knob, AHK-3	2203-036
48	1	Back Gauge Housing RH	F0-08
49	2	Hand Knob AHK-3	2203-036
50	1	Back Gauge Support RH	F0S-45
51	1	Back Gauge Stop	F0S-45
52	2	Back Gauge Pinion	F0S-43
53	3	Pivot Stud	F0S-46
54	2	Truarc Rings, 5100-100	3351-032
55	2	Knife Bar Take-Up Gibs	F0S-001



63	1	Actuator		7130-342
64	1	Limit Switch Post		7130-341
65	1	Limit Switch Bracket		7130-3
72	1	Enclosure, NEMA 1		4320-101
73	1	Starter, Size 0M		4150-101
76	2	Contact Block N.O.	PB2, S1	4130-001
77	2	Contact Block N.C.	PB1, S1	4130-012
78	1	Relay	CR	4136-009
79	1	Transformer	T1	4177-005
80	1	Foot Switch	FS1	4162-040
81	1	Fuse Holder		4329-023
82	1	Fuse 1 Amp	F1	4326-023
83	2	Limit Switch 9007-4530	LS1, 2	4114-513
87	1	Receptacle MTRS-004		4136-012
	1	OMP Special "Ground Plate"		4122-046
	1	OB-4PT Pilot Light (Green)		4126-035

59	1	Bevel Gauge		5YS-251
66	1	Switch Box Bracket		7145-266
67	1	Plate, Rear		7130-264
68	1	Cover, Front		7130-361
69	1	Cover, Lower Front Sub		7130-344
70	1	Cover, Upper Front Sub		7140-345
74	2	Pushbutton Operator	PB1, 2	4128-002
75	1	Selector Switch	S1	4160-001
84	1	Legend Plate "START"		4122-002
85	1	Legend Plate "STOP"		4122-004
86	1	Legend Plate "SINGLE-REPEAT"		4122-053