

Roving ChessNuts CHESS Teasers



NEWS, RESULTS, UPCOMING EVENTS, PHOTOS AND INTERESTING STUFF
MAINLY ABOUT SCHOLASTIC CHESS IN EDMONTON & CHESSNUTS ACTIVITIES



Volume 10, Issue 20 • April 4, 2018



More than a dozen elementary school teams expected to battle

The warm-up for the April 22 School Team Championships was held during the Chess Faceoff At Rogers on March 11. That warm-up was a different format than the championships which will be school teams battling each other head-to-head.

At Rogers Place, nine elementary and two junior high schools were represented by individuals with some schools having eight or more players. On April 22, there will be specific teams of four players per school, ranked by rating. Highest rated players will play the highest rated from other schools.

GP Nicholson School got the top score on March 11, followed by Grandview Heights and Earl Buxton School. Will they do as well on April 22? Defending from 2017 will be team from Meyonohk Elementary.

Four competitors at the Chess Faceoff at Rogers Place in March were all smiles when presented with their hockey-themed chess awards.



School Team Championships for 2017/18

Sunday, April 22 at Greenfield Hall

Pre-register online by April 18 Sign-in at Hall, 12:30 to 12:45

Competition to start at 1 p.m., continue to between 3 to 4 p.m.

Each player competes 3 or more games • All players eligible for draw prizes

Schools must have four players per team and may have two teams - one each in two rating sections

Top finishing teams receive school trophy with members' names and members receive medals

Team members are chosen by chess rating; no unrated players can enter

Members must have previous tournament experience & use of chess clocks

For players not on a school team or surplus players from a school with team(s), there will be individual round-robin competitions offering a first-place trophy and runner-up chess medals, but number of extra players may be limited or entries cut off once school team players number 48; so register early.

Entry Fee: \$25 per player (\$20 for 2nd from same family)

Register online: Link on home page of www.rovingchessnuts.com

Registered Players and School Team list can be found on website along with updates about this event! It helps on tournament day with line-up if parents pay entry fee in advance by sending cheque via school program or chess class instructor; or call 780-474-2318 to pay via card (or for more details)

General Tournament Notes:

If you have to withdraw prior to tournament day, send e-mail to: rovingchessnuts@shaw.ca. On tournament day if you suddenly can not attend or will not be able to sign in by 12:45, call or text 780-554-7280.

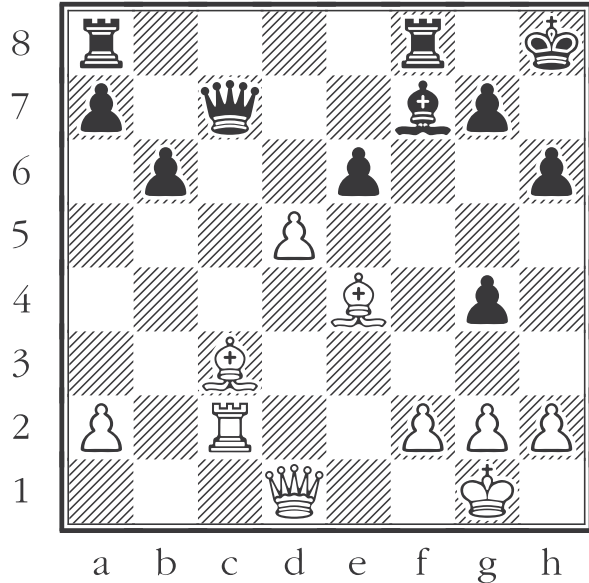
Keep updated about this event by visiting: www.rovingchessnuts.com



Answer to last week's
Four Puzzle Chess Board:
A, C & D were all stalemates
Only B was a checkmate.

Find best move

White to move ... there are three good moves for White to make. Write them in order from best to so-so move.



Best White move: _____

Second Best: _____

Third Best: _____

Series of articles on ...

Why You May be Losing Chess Games

Just playing endless number of chess games will not improve your skills unless you realize what you may be doing right or wrong in your playing style.

Here are some of the factors which lead particularly younger players into getting into trouble on the board.

- **You play too fast.** Instead of considering all your possible moves plus figuring out what your opponent is likely planning, you too quickly make what appears to be the most obvious move.

- **You play only your side of the board.** No army wins a war without first considering the position of its enemy and what that enemy is planning to do. Even experienced players can get too excited about their own attack and ignore their defence. What is the sense of figuring out a combination of moves that will lead to you scoring a checkmate in four or five moves, if your opponent will be checkmating you on their next move?

- **Defence first.** First order of business in solving the new puzzle that is created with every move, is to check your defence. Make sure your king and other pieces are safe. Then you start considering your own moves. Keep in mind that unless your move is a checkmate, your opponent will respond to it and you need to know what that response is likely to be or else you could be surprised!



Have Fun! Learn & Play Chess!

Chess Activities

The following scholastic chess competitions and activities in Edmonton and area are subject to change. Keep updated: regularly check the website: www.rovingchessnuts.com Make sure you are on ChessNuts' e-mail contact list so you get newsletters, updates on school programs and other information.

To subscribe, e-mail: rovingchessnuts@shaw.ca or call: 780-474-2318.

Most Saturdays, 9 to 10 a.m.: Free evaluations of chess skills at the Roving ChessNuts. Necessary for proper placement in classes, coaching sessions and competitions. Appointments necessary ... phone or e-mail. If Saturdays do not work, other arrangements may be made. Get your child started the right way!

Monday, Tuesday, Wednesday evening classes (6:30) at Greenfield Hall, 3803 114 Street; Saturday mornings at Roving ChessNuts, 12019 76 Street: Greenfield Beginner Classes on Mondays and Tuesdays are filled for spring session. You can be placed on a waiting list. ChessNuts Saturday Knights classes, 10 a.m. and 11:15 a.m. start Spring Session this Saturday and are expected to fill quickly. You must apply to join these classes and some are filled or nearly filled. Call 780-474-2318 or e-mail. **Sunday, April 22, sign-in 12:30 p.m. at Greenfield Hall: School Team Championship** at Greenfield Hall. Round-robin format with trophies and medals as prizes. All players eligible for draw prizes. Sign-in by 12:45 p.m. Online registration and details begins evening of March 27, follow link on Roving ChessNuts website. Each school must have four or five students per team. Individuals can enter as well, although their numbers may be limited. Updates www.rovingchessnuts.com.

Sunday, May 13, at Greenfield Hall: Popular Mother's Day Tournament where each player gets a flower to take home to Mom and draw prizes are usually are ones to share with Mom! Watch for details and online registration.

Sunday, June 3, at Greenfield Hall: School Grade Championships: Play only against players in your own school grade!

Sunday, June 24, at Greenfield Hall: Hurrah! End of School Year Tournament with Hot Dog Party!

Watch for details, online registration and updates for June tournaments on website.

Reserve 2018 Summer Dates:

July 1: **Chess Promotion**

July 3 to 6: **Chess Camps at Roving ChessNuts**

August 27 to 31: **Chess, Fitness and Fun Camps at Greenfield Hall**

Check www.rovingchessnuts.com & future newsletters
for updates, new events and online registration for events,
plus details on school programs and classes



Pledge of Chess' Foot Soldiers...

"I may be weak, but I stand my ground and never retreat! And in the end, I may win the war!"



Clocks make for fairer games!

DGT1001 Chess Clock

\$41.95^{+GST} Used at Edmonton tournaments
Scholastic Tournaments • Practice with a clock - time
your checkmating abilities and speed up play at
home with slower-thinking opponents!

Roving ChessNuts

12015 76 Street, Edmonton • 780-474-2318

rovingchessnuts@shaw.ca

Orders can be placed by e-mail or phone;
delivered to students in school programs or classes