

MLS #: N91672A (Active) List Price: \$319,900

404 Padre Blvd. South Padre Island, TX 78597



Complex Name: Saida Towers III
Type: Condominium
Stories: One
Ground Floor: No
Ttl Bldg Units: 84
Ttl Bldg Floors: 12
Rooms: Foyer, Open Concept, Wet Bar
Bedrooms: 3
Full Baths: 2
Half Baths: 0
Est A/C SqFt: 1515
Year Built: 1981
Bedroom Location:

Unit #: 1107
County: Cameron
Town: South Padre Island
Subdivision: Padre Beach Acres
School District: PIISD
Zoning: D-1

Lot #: 0	Block #: 0	Parcel:
Lot Size/Acreage: 0	Apx Acreage Range: Less than 1 Acre	
Lot Size/Acreage Source: CCAD	Location Description: Gulf Front, Gulf View	
Fee Amount: 538	Fee Payable: M	
HOA Includes: Cable TV, Internet, Maintenance Exterior, Maintenance Grounds, Pest Control, Security, Sewer, Trash, Water		
Insurance Amount: 1538.00	Insr Incl/Fee: No	
Rental Unit: Yes	Rental Agy Phone #: 5510127	Current Long Term Lease: No
Taxes: 5818.00	Tax Year: 2019	Tax ID #: 67-7270-0110-1107-00
Irrigation District: No	Irrigation Provider:	
Interior Features: Ceiling Fan(s), Furnished, Smoke Detector, Walk-in Closet, Wet Bar, Window Treatment		
Exterior Features: Balcony, Gated, Hot Tub, Pool, Tennis Court, Water Front, Water View		
Community/Club Amenities: Gated, Hot Tub, Laundry/Utility Room, Pool-Outdoor, Security-24 Hour, Tennis Court, Water View		
Miscellaneous: Association-HOA, Elevator		

Construction:
Foundation:
Roof:
Cooling/Heating: Central Electric
Energy Features: Double Pane Windows

Utilities: Cable Available, Electricity Connected, Water Connected, Sewer Connected, Phone Available, Water District
Flooring: Tile
Car Covering: Unassigned Parking
Appliances: Dishwasher, Disposal, Microwave, Refrigerator, Stove
Pet Restrictions: No
Pet Restriction Type:

Public Remarks: Water views from every room of this 11th floor north corner condo! What a price for over 1500sqft of beachfront living space! The open concept living/dining area has stunning Gulf views. The spacious kitchen offers a view of the Laguna Madre Bay and causeway. The master bedroom, which has an ensuite bath, has a Gulf view to the east and north. One guest bedroom has the best of both worlds - beach and bay views! The other guest bedroom features a view of the bay and causeway. This condo has a huge balcony - what a great place to watch the sun rise and enjoy the ocean breeze. Plenty of closet space - master has 2 closets, walk-in closet in guest bedroom, and ample pantry space in the kitchen. At this price, this one will not last long!

Information Herein Deemed Reliable but Not Guaranteed
MLS #: N91672A



Aerial View



Exterior - Saida III



unit #1107 is on the north corner, next to top floor

View From Balcony



This could be your view!

View From Balcony



View From Balcony



View From Balcony



View From Balcony



Balcony



very spacious balcony

Balcony



Living



ocean view from living area

Living



Living



Living



Living



Living



new furniture conveys with sale

Living



Living



Living



open concept

Living/Dining



plenty of room to gather with family and friends

Living/Dining



Living/Dining



dining has ocean view

Living/Dining



Living/Dining



Living/Dining



new dining rea furniture conveys with the sale

Dining



Dining



seating for 6

Dining/Kitchen



additional seating at kitchen bar

Dining/Kitchen



Kitchen



ocean view from kitchen

Kitchen



lots of cabinet space

Kitchen



Kitchen



lots of counter space

Kitchen



kitchen has a view of the bay

Kitchen



Kitchen



stainless steel appliances

Kitchen



Pantry



spacious pantry

Wetbar



convenient wetbar in living area

Wetbar



Master Bedroom



master suite has an ocean view

Master Bedroom



Master Bedroom



wake up and look at the ocean!

Master Bedroom



Master Bedroom View



north corner unit provides additional ocean view

Master Bedroom



Master Bedroom



Master Bath



ensuite bath has granite countertop

Master Bath



tub/shower combo

Guest Bedroom A



spacious guest bedroom

Master Bath



Guest Bedroom A



Guest Bedroom A



Guest Bedroom A



Guest Bedroom A - View



view of bay and causeway from guest bedroom

Guest Bedroom B



Guest Bedroom B



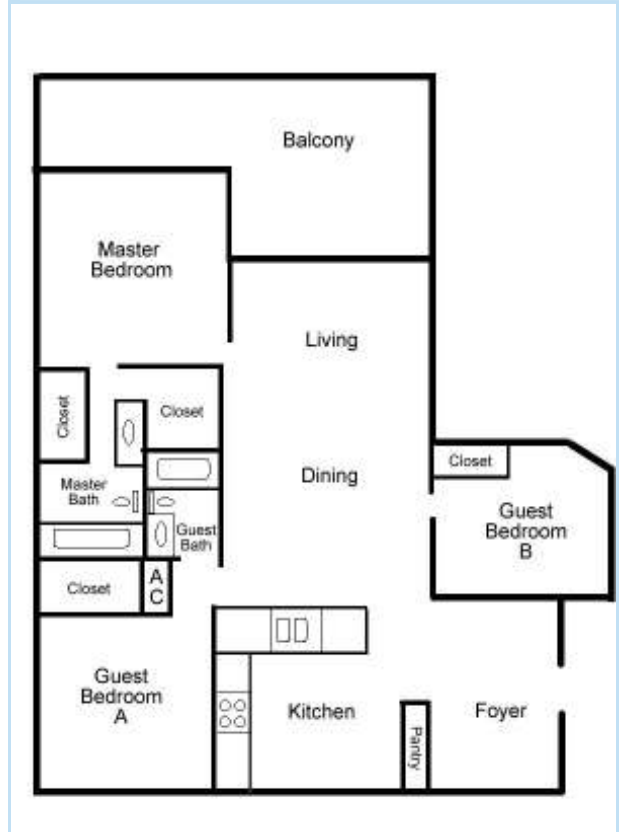
view of bay and causeway from guest bedroom

Guest bath



guest bath has granite countertop and tub/shower combo

Floorplan



1515 square feet of beachfront living space!

Saida Pool #1



Saida Pool #1



Saida Pool #1



Saida Pool #2



Saida Pool #2



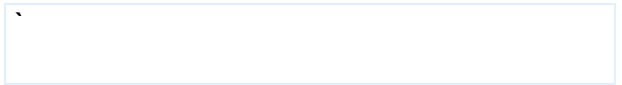
Saida Pool #2



Saida Pool #3



Saida Pool #3



Saida Pool #3



Palapa Area



Palapa Area



Palapa Area



Tennis



Saida has 4 tennis courts

Exterior

