



AMERICAN ELECTRIC EQUIPMENT, INC.

P.O. BOX 710 BECKLEY, WV 25801

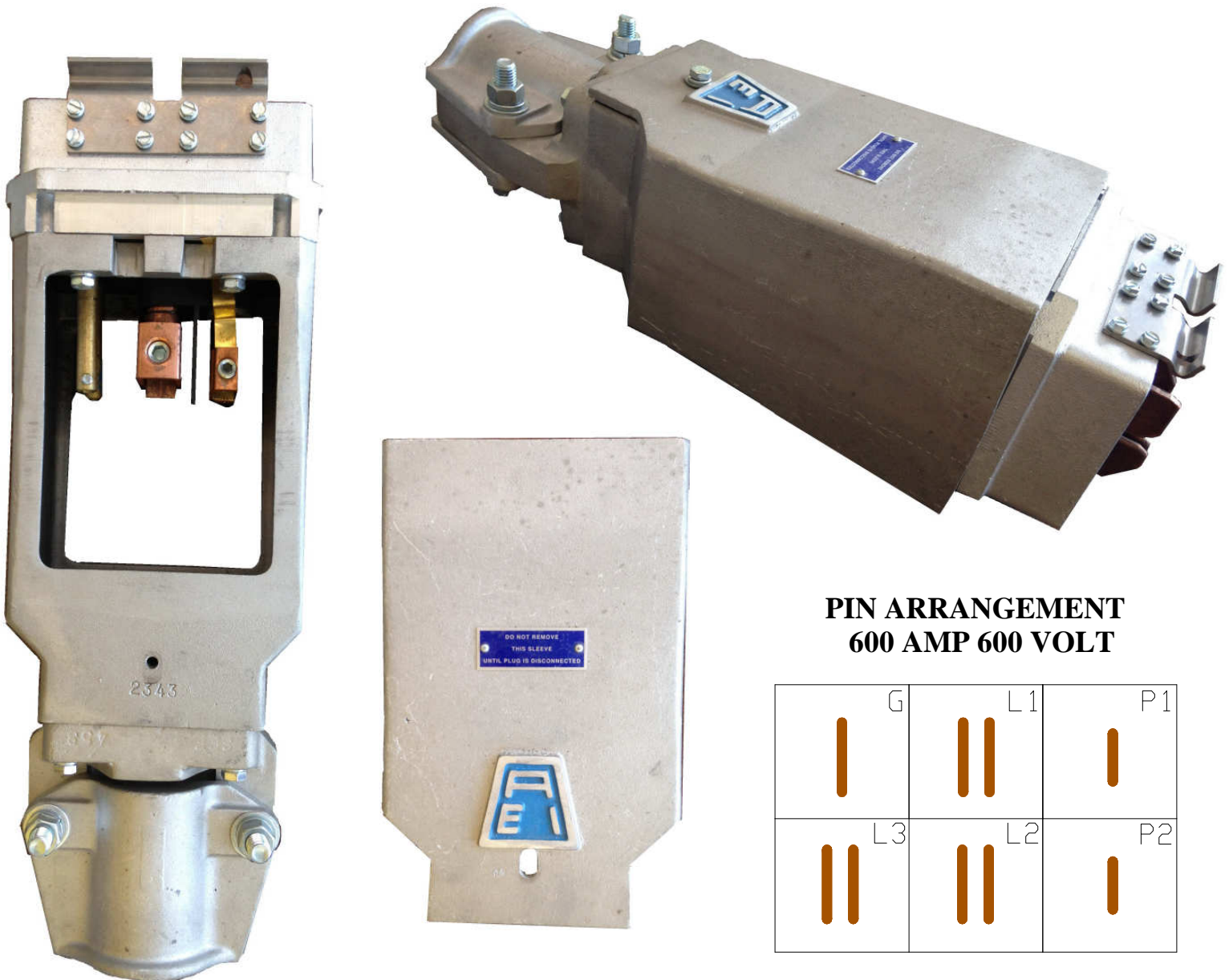
PHONE: 304-255-7438

FAX: 304-255-7448

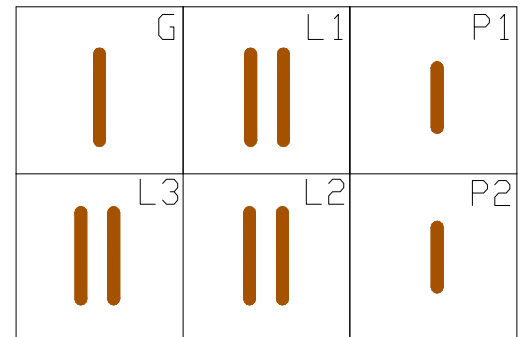
PL1165-064

Document A-13620

July 12, 2013



**PIN ARRANGEMENT
600 AMP 600 VOLT**



Lever Action Connectors

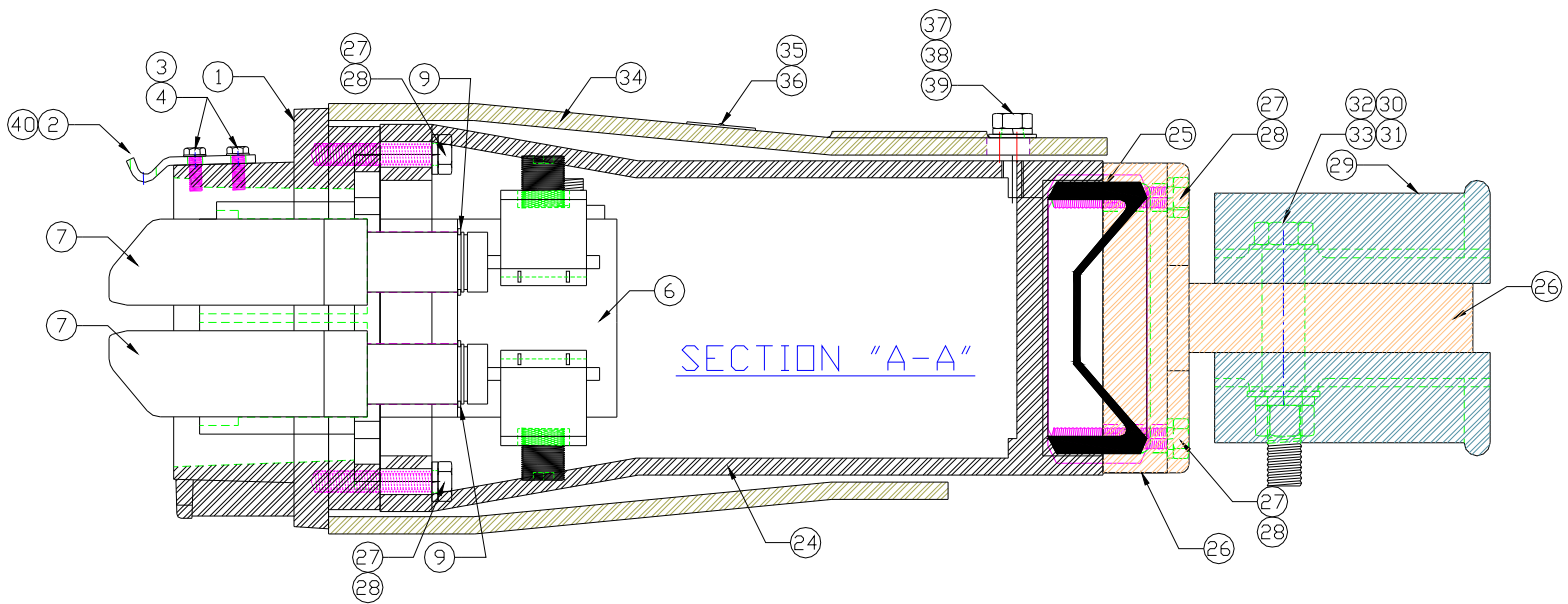
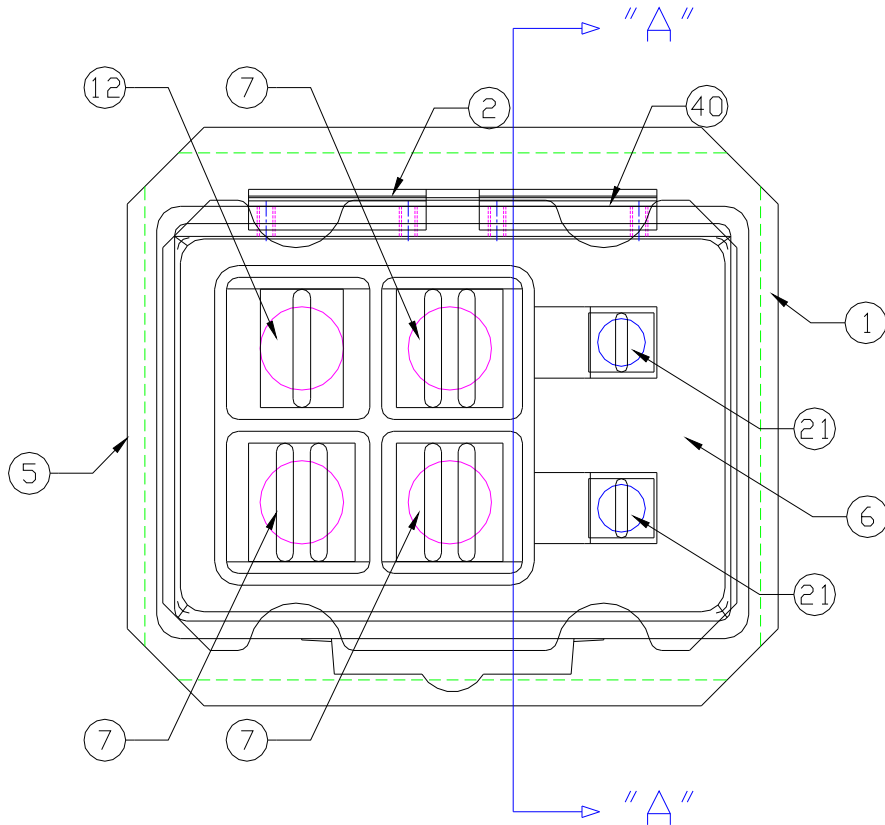
AEEI's low voltage figure 64 connectors are rugged, trouble free devices providing quick, confident connect/disconnect for portable mining equipment or self-propelled machinery. They are rated 600 Amperes at 600 VAC. Cable sizes range from #1/0 to 350 MCM.

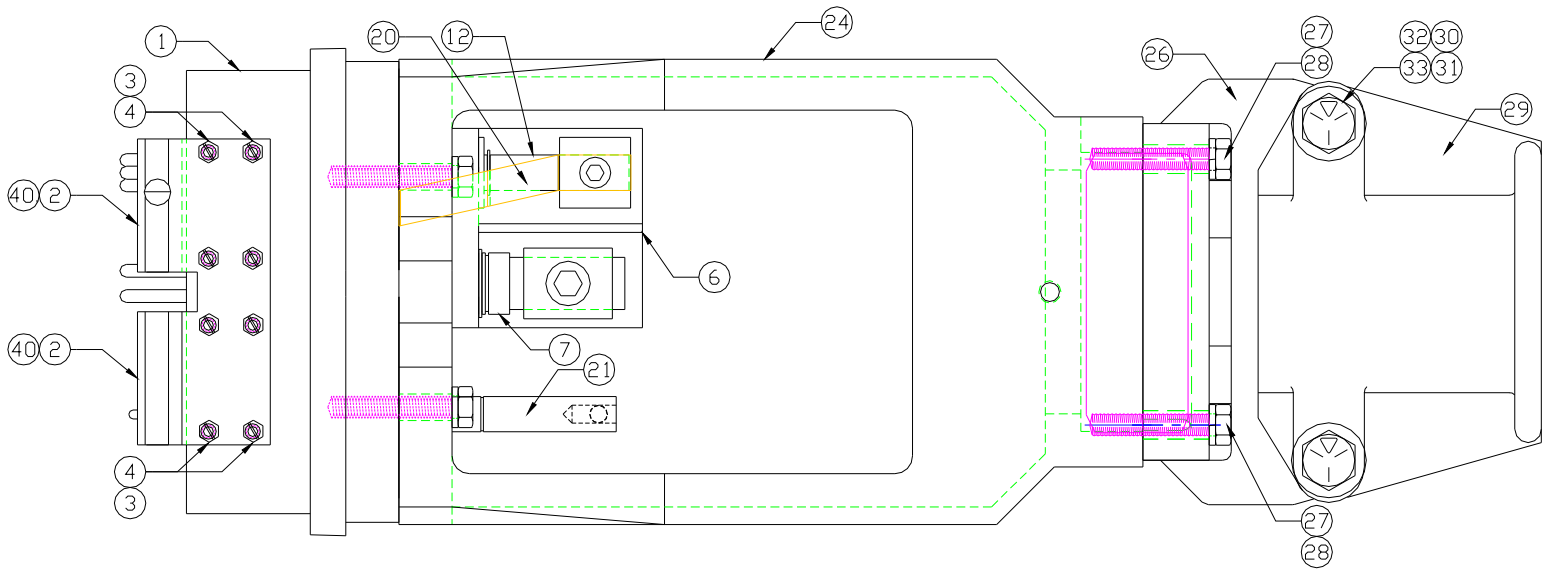
Available Repair Parts List

Item	Quantity	Part Number	Description
1	1	025-3	BASE
2	1	13390	TOP LATCH
3	8	2069-3	10/32 SLOTTED HEX HEAD SCREW 1/2" LONG
4	8	2071	LOCK WASHER 3/16"
5	1	13363-2	IDENTIFICATION STICKER
6	1	12000	INSULATOR
7	3	13370	PHASE BLADE ASSEMBLY
8	1	4050	POWER BLADE AND STUD
9	1	2064	7/8" ROTOR CLIP
10	1	149	POWER TERMINAL
11	1	3305	5/8" - 18 NF x 3/4" SET SCREW
12	1	12746	GROUND BLADE ASSEMBLY
13	1	12746-1	COPPER STUD
14	1	12746-2	COPPER BLADE
15	1	12746-3	FLAT WASHER
16	1	12745	GROUND STUD ADAPTER BUSHING
17	1	2064-2	1/2" ROTOR CLIP
18	1	2694	7/16" - 20 NF x 3/4" SET SCREW
19	1	102-2	GROUND TERMINAL
20	1	13366	GROUND STRAP
21	2	13371	PILOT BLADE ASSEMBLY
17	1	2064-2	1/2" ROTOR CLIP
22	1	7813	PILOT BLADE AND STUD
23	1	11473	SLOTTED HEAD SET SCREW 1/4" - 20 x 1/2"
24	1	2343	BELL HOUSING
25	1	068	GROMMET
26	1	458	STRAIN CLAMP NUT
27	8	2068-4	5/16" - 18 x 1-1/2" HEC HEAD CAP SCREW
28	8	2067-2	5/16" LOCK WASHER
29	2	711	STRAIN CLAMP HALF
30	2	2065-3	1/2" - 13 x 3-1/2" HEX HEAD CAP SCREW
31	2	2067-4	1/2" FLAT WASHER
32	2	2071-4	1/2" LOCK WASHER
33	2	2066-3	1/2" HEX NUT
34	1	2344	SLEEVE
35	1	063	NAME TAG WARNING
36	2	2072	DRIVE SCREW #4 x 3/16" LONG
37	1	2068-2	5/16" - 18 x 1" HEX HEAD CAP SCREW
38	1	2071-2	5/16" LOCK WASHER
39	1	2067-2	5/16" FLAT WASHER

Available Repair Kit

Part Number	Qty.	Description	Drawing Number
		Top Latch Kit For 64 / 107 Plug	
		Parts Included In Kit	
064-2-KIT	1	TOP LATCH	A-13390
	8	3/16" x 1/2" HEX HEAD SLOTTED MACH. SCREW	A-2069-3
	8	3/16" LOCK WASHER	A-2071





Features

- ✓ Single-piece, high grade insulator
- ✓ Aluminum housing
- ✓ Self-contained cable strain relief and cable grommet
- ✓ Fits both flat and round trailing cables
- ✓ All live exposed parts are completely enclosed by the metal housing
- ✓ Easy to remove sleeve for making cable terminations
- ✓ Minimum effort required to connect or disconnect electrical connections.
- ✓ The ground blade is always the last to break, first to make
- ✓ Ground check circuits make last, break first to insure phase connections are de-energized when connector opens
- ✓ Self-wiping contacts insure good electrical connections after each operation
- ✓ Interchangeable with other industry standard figure 64 plugs
- ✓ Removable ground strap for ground pin isolation