

Faith Lutheran of Saline County

Small Congregations can make a Difference



Pastor David Otten

October 8, 2012

Faith Lutheran

- A preaching station of Our Redeemer Lutheran Church in Golconda, IL.



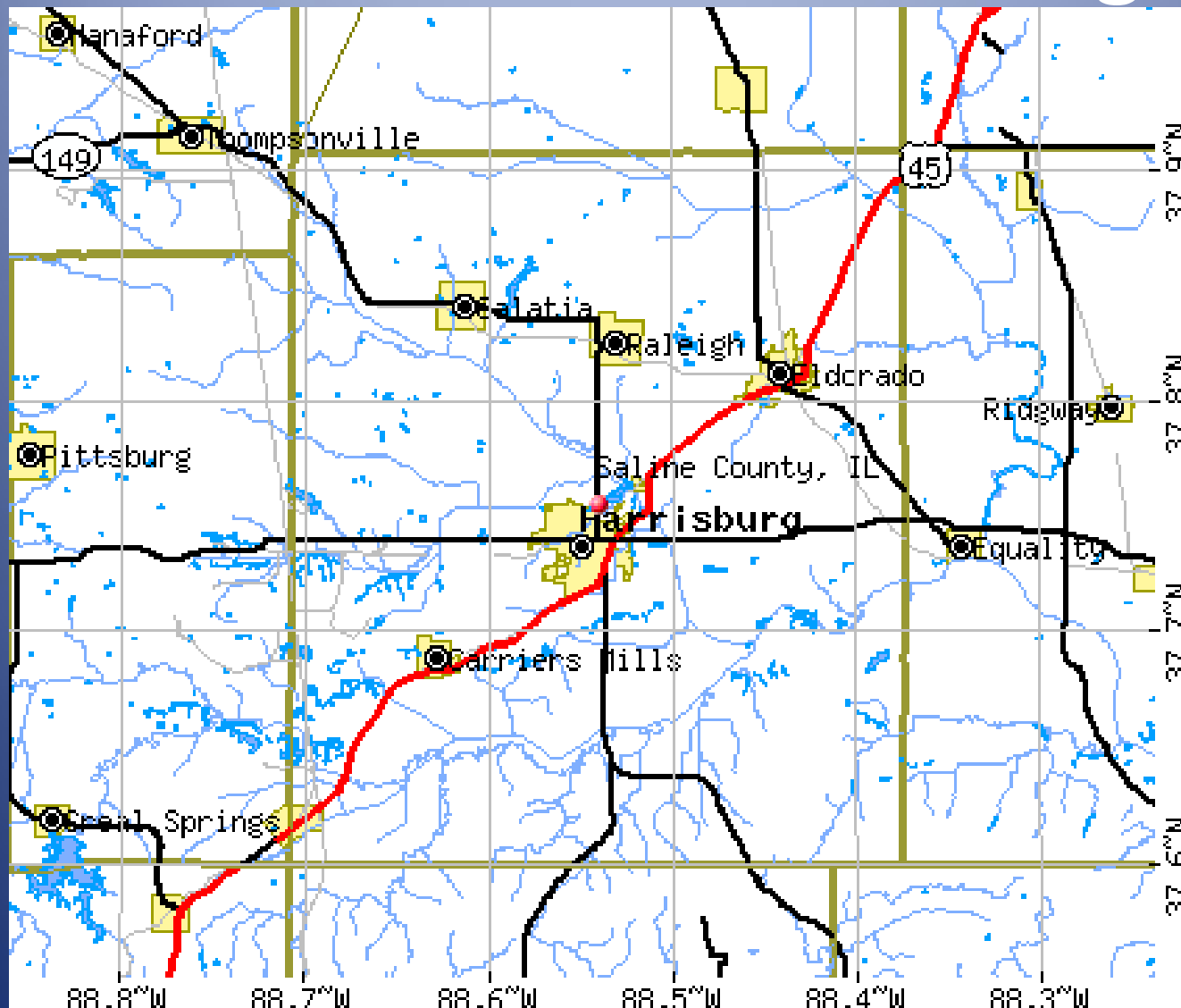
Faith

Our
Redeemer

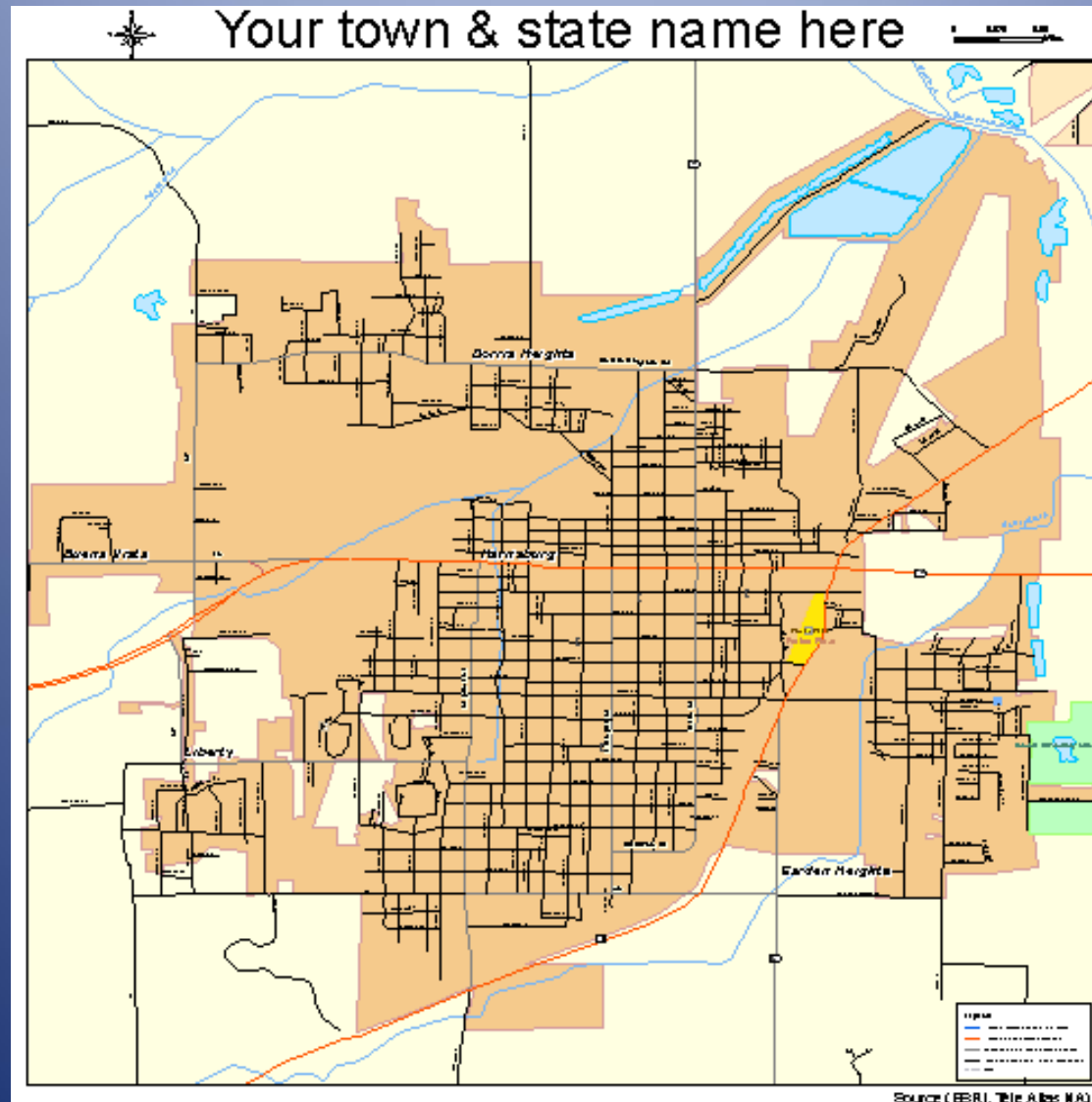
Faith



Eldorado and Harrisburg



Harrisburg



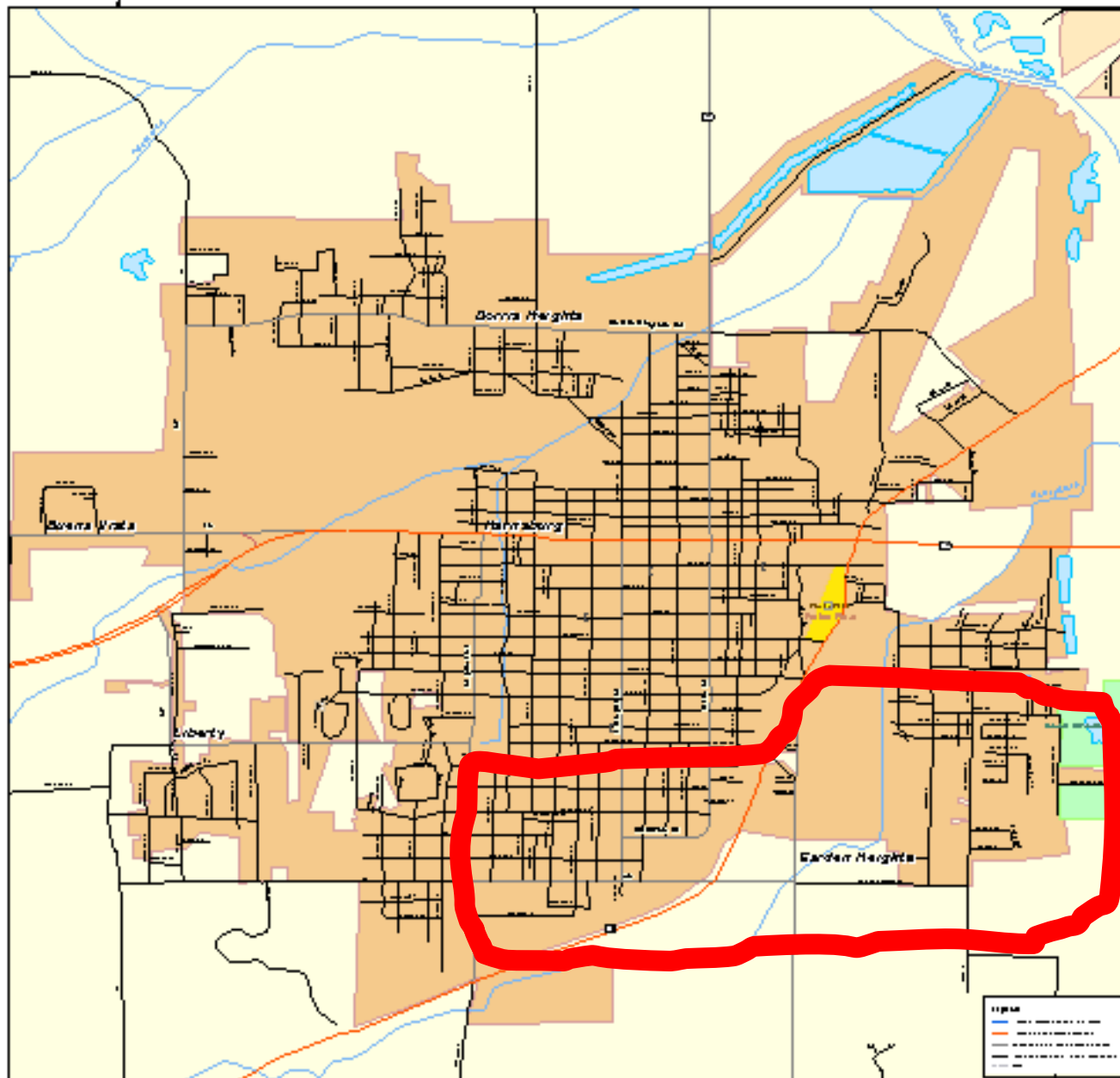
Saline County Tornado Security Perimeter

0 500 1,000 2,000 Feet



Your town & state name here

1 2 3 4 5 6 7 8 9 10 11 12 13 14 15 16 17 18 19 20 21 22 23 24 25 26 27 28 29 30 31 32 33 34 35 36 37 38 39 40 41 42 43 44 45 46 47 48 49 50 51 52 53 54 55 56 57 58 59 60 61 62 63 64 65 66 67 68 69 70 71 72 73 74 75 76 77 78 79 80 81 82 83 84 85 86 87 88 89 90 91 92 93 94 95 96 97 98 99 100



Source: (EBRI, The Atlas NA)





Damage Statistics

- February 29, 2012 EF4 Tornado 166-200 mph
- 300 plus homes effected
- 13 deaths
- 35 business destroyed
- 100 plus injured

Since the Tornado

- 1,500 volunteers from out of town
- 70,000 volunteer hours
- Rehabbed 15 houses
- Replaced 100 rooms of furniture
- Replaced 5 Trailers
- Referred 50 homes to WADI and Crosswalk
- 1 semitrailer of clothing given out

continued

- 8 Semitrailer's of food distributed
- 100 plus volunteer groups

STORM

- S – Social Services
- T – Temporary Housing
- O – One Stop Center
- R – Rehab of Houses
- M – Matching Resources

Faith's Efforts

Ministry of Presence

- Visitation of damage area
- Visitation of Key Centers for aid
- Present at STORM meetings
- Visitation of storm victims

Faith's Efforts

Ministry of Charity

Family 1: Family of Six need- \$500 of Wal-mart Gift cards for house hold goods. Source of funds St. John's Lutheran New Minden, IL

Family 2: Grandmother and Granddaughter -need \$6,000 to complete payment on new trailer. Source of funds Synod disaster grant.

Faith's Effort

Family 3: Family -need \$3000 for purchase of new home. Source of funds SID

Family 4: Family of two -need household goods of \$100 of Wal-mart gift cards. Source of funds SID

Family 5: Single woman – need of household goods of \$250. Source of funds SID

Faith's Efforts

Family 6: Family of seven – need for aid on groceries, water bill, and two mattresses . \$150
Wal-mart gift cards, (SID) water bill \$100.67
(Synod Disaster Relief) , two Mattresses \$256
(SID)

Family 7: Family of 3 – need washer, Stove, Couch, mattress, porch swing, ceiling fans, insulation, window, roofing material, garage door, smoke detectors, hardware -\$2654.71 (SID)

Faith's Effort

Total money spend on charity

\$13,011.38

Faith's Efforts

Spiritual ministry

Special addition of Portals of Prayer for disasters

I am Not Afraid, Children's book

75 plus Bibles

Faith Efforts

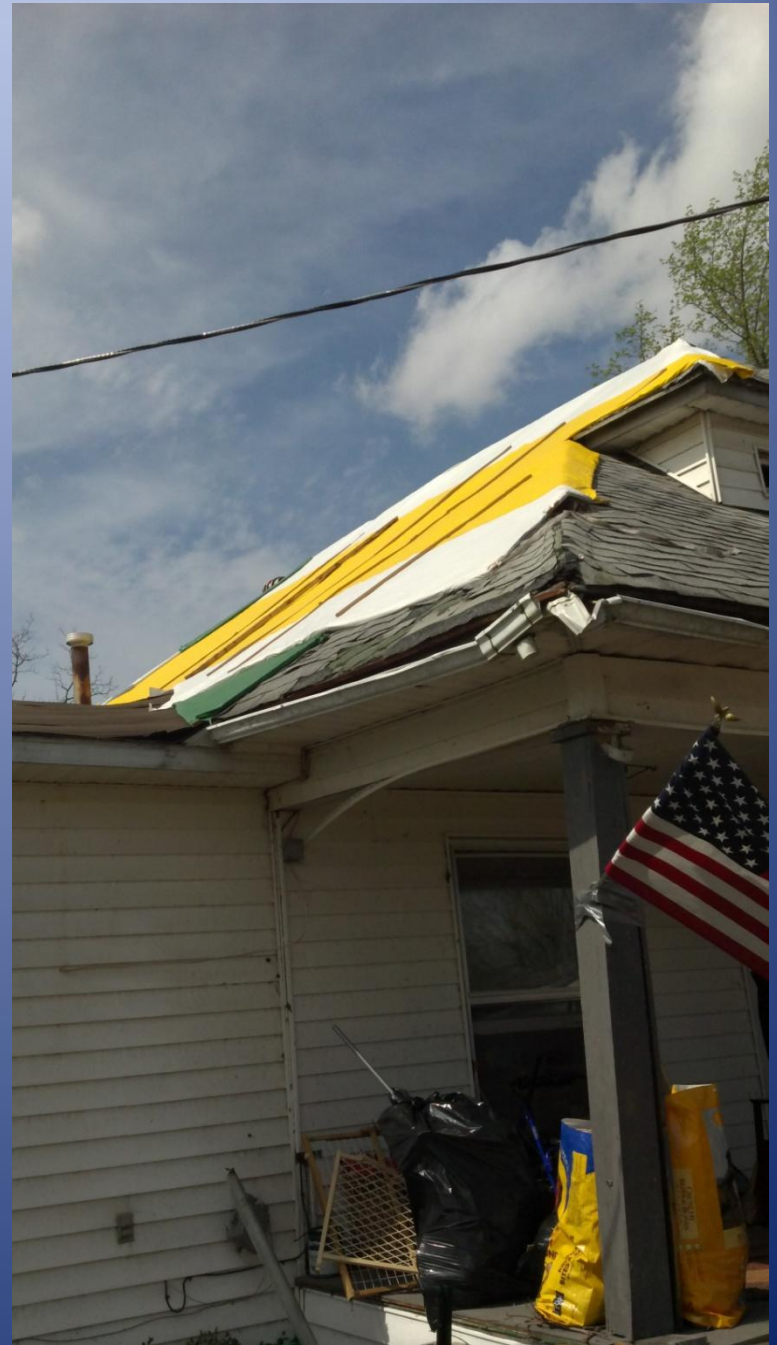
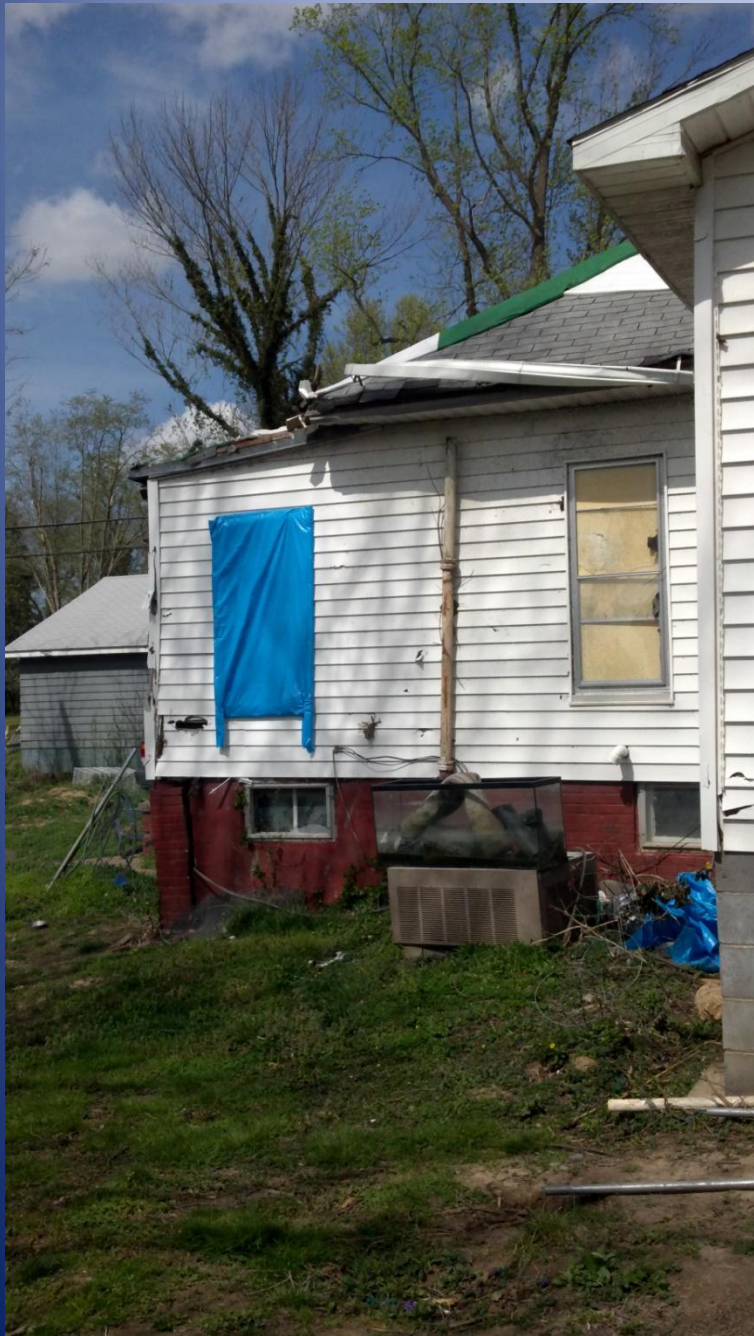
Family # 6 and 7 - made multiple visits

- catechetical literature

- Children's Christian literature
literature for children.

Family #6 is open for an adult study of the
Christian faith.

Family #7 is open to continued pastoral visits.







Conclusion

Parties involved to that made our efforts possible

- Synodical Disaster Relief individuals
- SID staff
- Many donor to Synod and District and Faith
- Members of Faith
- STORM committee