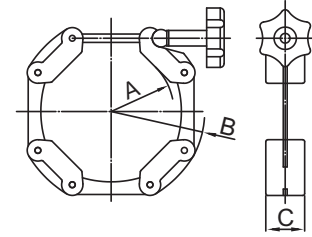


NW Hardware & Seals

NW CHAIN CLAMPS TYPE 1

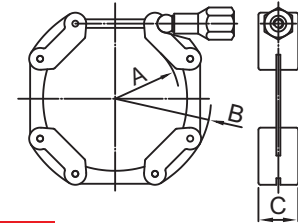
*Body Material: Aluminum
*Bolt Material: Plastic



Part Number	Size	A	B	C
NW-CC1-16	NW16	22.00	56.00	20.50
NW-CC1-25	NW25	32.00	66.00	20.50
NW-CC1-40	NW40	46.00	80.00	20.50
NW-CC1-50	NW50	69.00	100.00	20.50
NW-CC1-63	NW63	78.00	112.00	20.50

NW CHAIN CLAMPS TYPE 2

*Body Material: Aluminum
*Bolt Material: SS 304

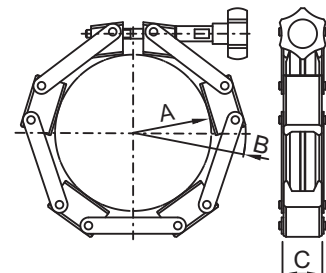


Part Number	Size	A	B	C
NW-CC2-16	NW16	22.00	56.00	20.50
NW-CC2-25	NW25	32.00	66.00	20.50
NW-CC2-40	NW40	46.00	80.00	20.50
NW-CC2-50	NW50	69.00	100.00	20.50
NW-CC2-63	NW63	78.00	112.00	20.50

**ISO
NW**

NW CHAIN CLAMPS TYPE 1

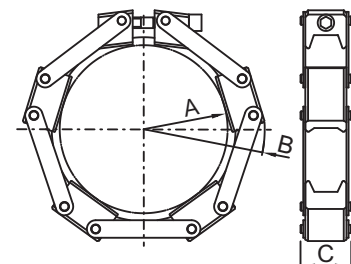
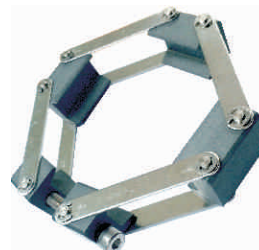
*Body Material: Aluminum
*Bolt Material: Plastic



Part Number	Size	A	B	C
NW-CC1-80	NW80	117.10	153.00	30.00
NW-CC1-100	NW100	136.50	171.68	30.00
NW-CC1-160	NW160	197.90	231.70	30.00

NW CHAIN CLAMPS TYPE 2

*Body Material: Aluminum
*Bolt Material: SS 304



Part Number	Size	A	B	C
NW-CC2-80	NW80	100.00	165.00	38.00
NW-CC2-100	NW100	122.00	185.00	38.00
NW-CC2-160	NW160	174.00	235.00	38.00