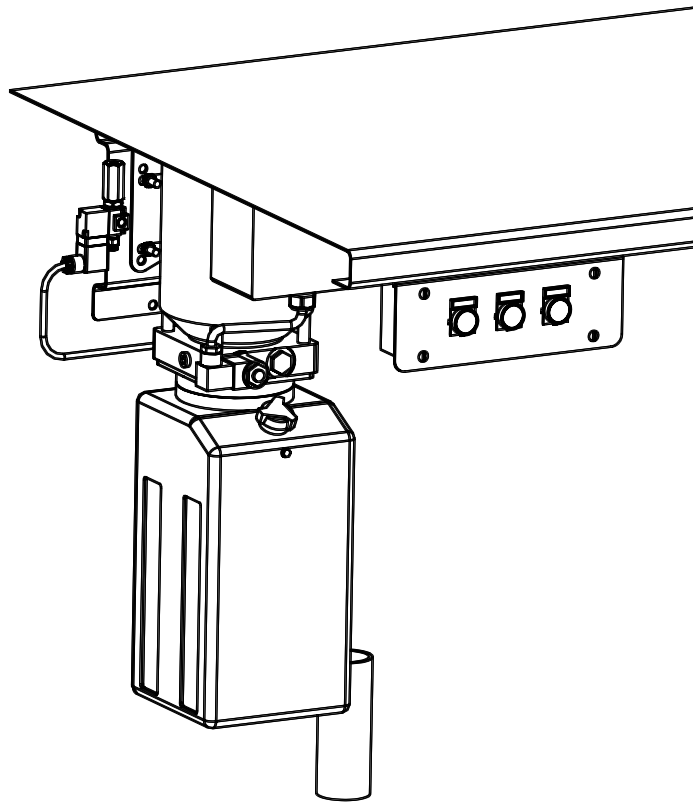


INSTALLATION & OPERATION MANUAL SUPPLEMENT

Bench Mounted Controls



200 Cabel Street, P.O. Box 3944 Louisville, Kentucky 40201-3944
Email: sales@challengerlifts.com Web site: www.challengerlifts.com

Office 800-648-5438 / 502-625-0700 Fax 502-587-1933

**IMPORTANT: READ THIS MANUAL COMPLETELY
BEFORE INSTALLING or OPERATING LIFT**

Step 1 Power Unit Bracket

Using the Power Unit Bracket (17115) as a template, drill and attach the bracket to the wall under the workbench with the appropriate anchors (Not Included). See Fig 1 for Minimum Dimensions for Clearance and Electrical Requirements.

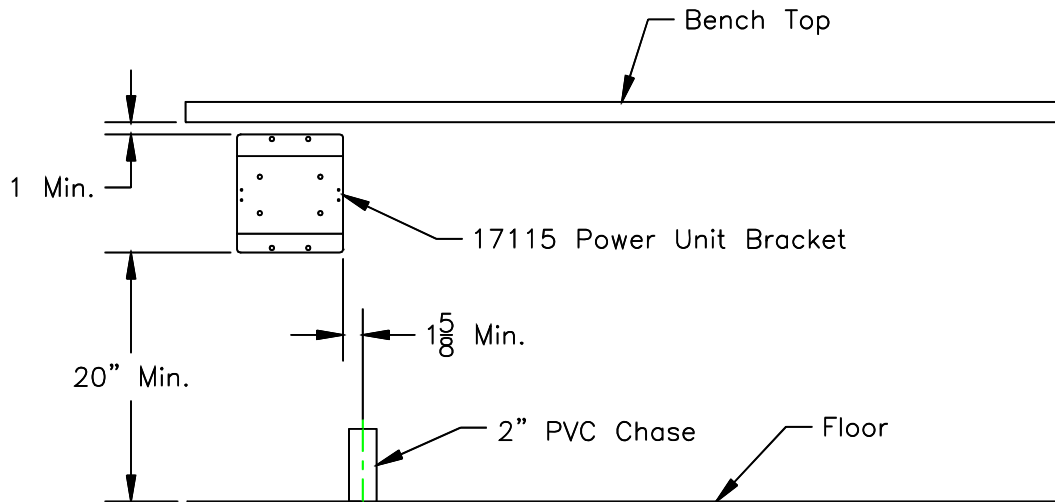


Fig. 1

Step 2 Power Unit and Lock Release Valve

Position and Assemble the Power Unit (A1201RC-*) and Lock Release Valve (17110) to the Power Unit Bracket (17115) as seen in Figure 2. The Lock Release Valve Ports are labeled 1, 2 and 3. 1 is the inlet, 2 is the outlet and 3 is exhaust.

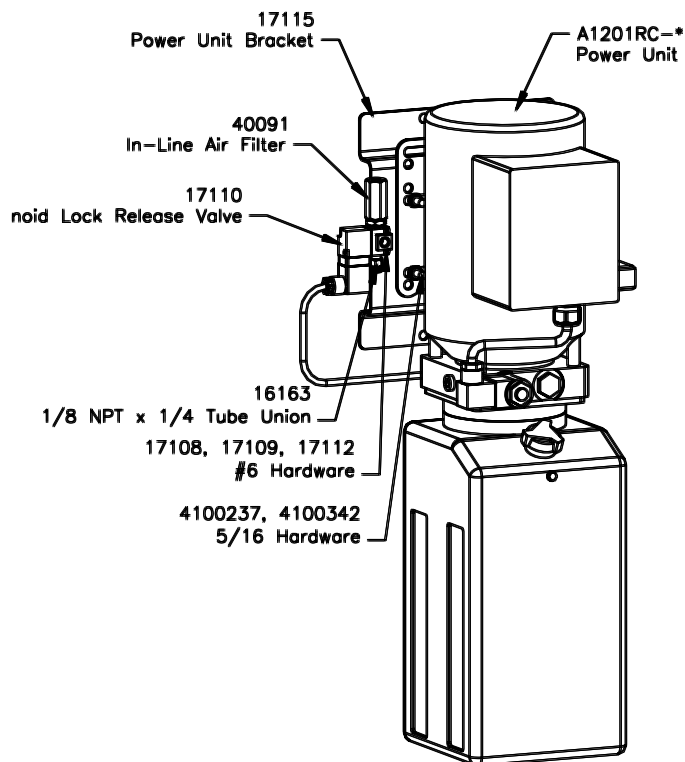


Fig. 2

Step 3 Control Box

Mount the 3 Button Control Box Assembly (17101) to the leading edge of the Workbench using the supplied 3/8" hardware. See Figure 3.

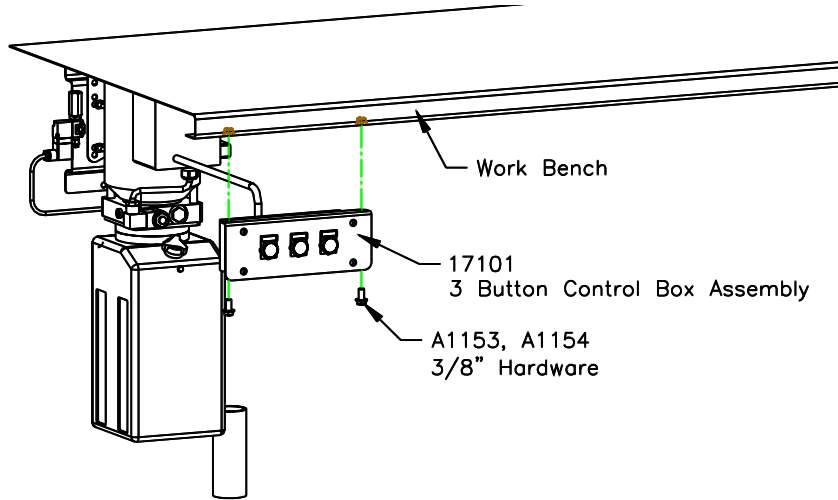


Fig. 3

Step 4 Wiring

Connect the power unit to a dedicated 25 Amp electrical branch circuit, using wiring methods prescribed by local codes. Wire both the 3 Button Control Box and the Solenoid Lock Release Valve to the Power Unit. Refer to Figure 4 for the wiring schematic.

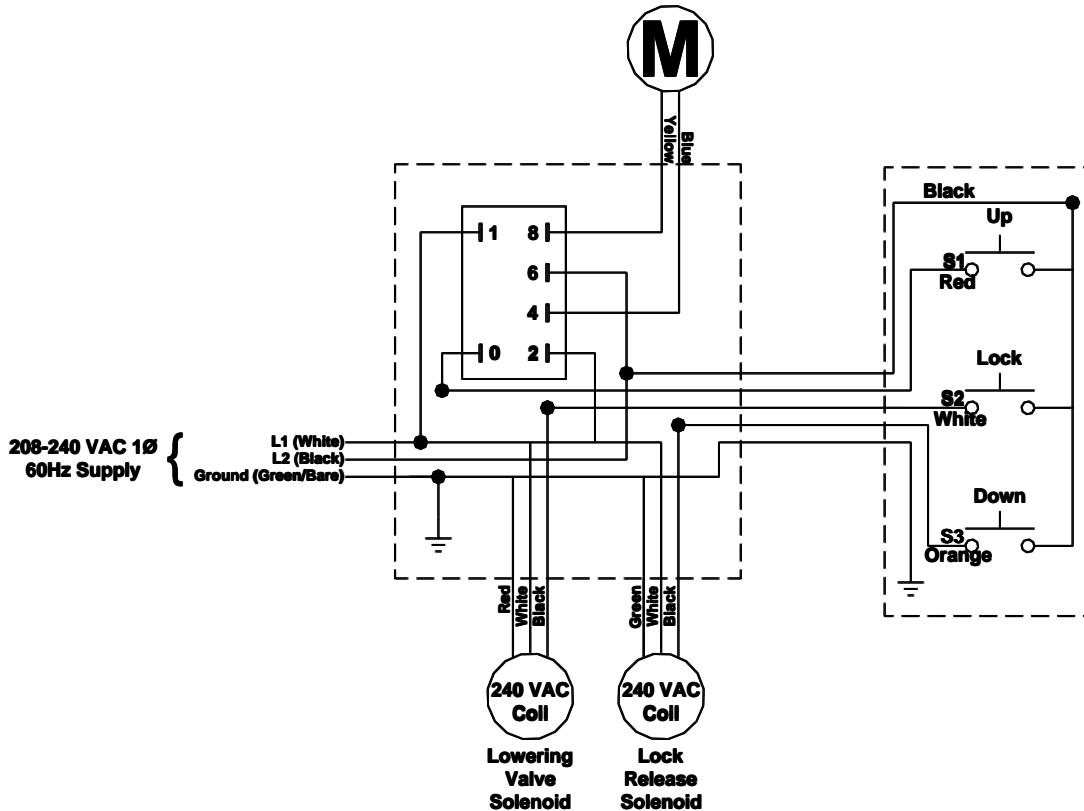


Fig. 4

Operation Procedure

To raise depress the UP button on the 3 Button Control Box and hold until the vehicles tires just clear the floor. **STOP** and check adapters for proper contact of vehicle manufacturers recommended lifting points and stability of the vehicle. Continue to raise the vehicle to a few inches above the desired working height. Lower the lift by depressing the LOCK button. **DO NOT** go under vehicle unless lock is engaged and all four adapters are securely contacting the vehicle manufacturers recommended lifting points.

To lower, raise lift slightly and disengage the lock by depressing the DOWN button. Continue to hold the DOWN button and depress the LOCK button until the lift is completely lowered. Return adapters to there lowest position and park the swing arms to provide unobstructed exit of the vehicle.