

# Approaches to the Skull Base

SENIOR NEUROTOLOGY RESIDENTS COURSE

November 10-11, 2013

**Program Location:**

**DePuy Synthes Institute**  
4600 Riverside Dr.  
Palm Beach Gardens, Florida 33410



## Faculty

**Course Director**

***Sean O. McMenomey, MD, FACS***  
Division Director Otology,  
Neurotology, Skull Base Surgery  
NYU Langone Medical Center

**Invited Lecturers**

***Antonio Bernardo, MD***  
Weill Medical College of Cornell  
University  
***Craig A. Buchman, MD, FACS***  
The University of North Carolina  
at Chapel Hill School of Medicine  
***Colin L.W. Driscoll, MD***  
Mayo Clinic Rochester

***Bruce J. Gantz, MD, FACS***  
University of Iowa Hospitals  
and Clinics  
***David S. Haynes, MD, FACS***  
Vanderbilt University School  
of Medicine  
***J. Thomas Roland, Jr., MD***  
New York University School  
of Medicine

Apply Online - Limited Enrollment  
[www.academicseventmanagement.com](http://www.academicseventmanagement.com)

Contact Pat Fitzwater for more information:  
[pat@academicseventmanagement.com](mailto:pat@academicseventmanagement.com) | 805-300-9154



# Agenda

## **SATURDAY | NOVEMBER 9, 2013**

6:30-8:30 pm

### **Welcome Reception**

Marriott Palm Beach Gardens Hotel-Poolside

## **SUNDAY | NOVEMBER 10, 2013**

8:00 am

### **Lecture/Lab**

Surgery for Chronic Ear Disease  
Complete Mastoidectomy  
Endolymphatic Sac Procedures,  
Ossiculoplasty Facial Nerve Monitoring,  
Cochlear Implant

1:00 pm

### **Lecture/Lab**

Facial Nerve Decompression  
Canal Wall Down  
Mastoidectomy

5:00 pm

### **Conclusion of Lab**

7:00 pm

### **Course Dinner**



## **MONDAY | NOVEMBER 11, 2013**

8:00 am

### **Lecture/Lab**

Approach to the IAC  
Translabyrinthine Approach  
Transcochlear Approach  
Petrosal Craniotomy

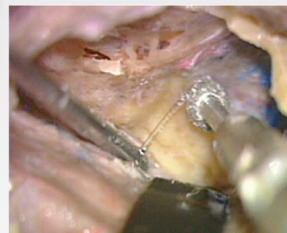
1:00 pm

### **Lecture/Lab**

Middle Fossa Craniotomy,  
Extended Middle Fossa Approach  
Total Facial Nerve Decompression,  
Sub-occipital Craniotomy

5:00 pm

### **Conclusion of Course**



*Approval by Department Chair must be obtained prior to completing the application and a letter of approval must be attached. Enrollment applications must be made online before **October 20, 2013**. Enrollments are limited and subject to approval. Please ensure you understand your program's policies governing support of Resident training and be prepared to provide key information concerning Residency Coordinator contact information.*