

Fundamentals of Bus Collision Investigation

Facilitated by: Walt Diangson, South West Transit Association (SWTA)
Lead Trainer & Chief Safety Officer

When: Thursday, June 27th to Friday, June 28th, 2019
(8:00 a.m. to 4:30 p.m. each day)

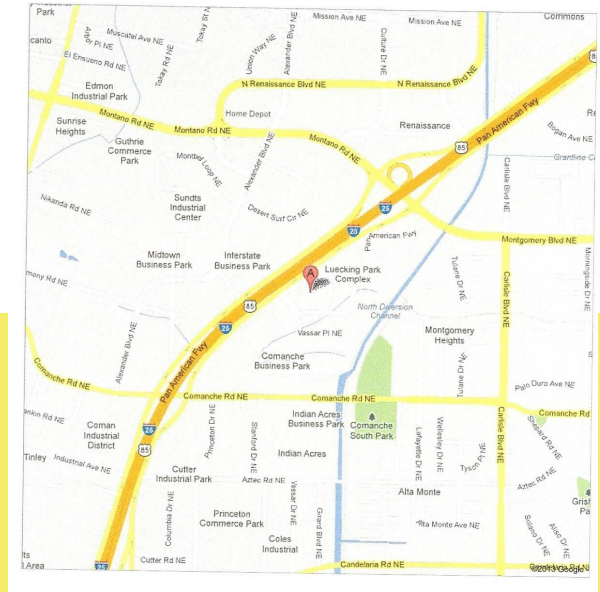
Where: Nusenda Federal Credit Union
Training Center
Room: La Luz
4100 Pan American Fwy. NE
Albuquerque, NM 87107

Course Summary:

The ability to gather critical information in response to a transit bus collision is a critical responsibility of transit staff. While local law enforcement responds to most significant transit accident scenes, a transit agency cannot rely solely on receipt of a final police report. The goal of a transit agency goes beyond the determination of fault and even classifying an accident as preventable or non-preventable.

Accidents (collisions and incidents), whether they result in injury and/or property damage, are warnings that there are uncontrolled hazards. We want these hazards identified and removed from the transit operating environment. It is critical that all injuries and accidents, including close calls, be reported so that they can be investigated, the causes determined and eliminated, and our safety performance improved.

This course draws from TSI's course *Fundamentals of Bus Collision Investigation*. The TSI course includes basic investigation tools and techniques relating to data collection, on-scene evidence documentation, damage and



debris evidence analysis, witness interview techniques, computation of simple speed estimates, and report writing. SWTA's presentation will cover the same elements and more but limit the need to do complex speed estimates with mathematical formulas. When collisions and incidents are investigated, the emphasis should be concentrated on finding the root cause and contributing factors of the event so you can prevent the event from happening again or reduce the loss. The purpose is to find facts that can lead to corrective actions, not to find fault.

Hotel Suggestions near training center:

- Drury Inn
7439 Pan American Fwy. NE
(505) 345-7500
- Nativo Lodge
6000 Pan American Fwy. NE
(505) 798-4300
- La Quinta
2011 Menaul Blvd. NE
(505) 761-5600
- Embassy Suites
1000 Woodward Place NE
Albuquerque, NM 87102
(505) 245-7100

Thank you to our Breakfast Sponsor!



All Aboard America!

Please note breakfast will be provided, all attendees are on their own for lunch.

To register or for more information, please contact:

Melissa Drake
Office: 505-796-8377
Cell: 505-350-4604
Email: mdrake@nm-ta.com

Please register by Friday, June 21st