

Prism Assemblies

Single Targeted Tilting Prism



This -30 mm offset prism holder is constructed from durable aluminum and sealed with a rugged corrosion-proof electrostatic powder paint coating.

ITEM#
0364

DESCRIPTION
Single Targeted Tilting Prism

Single Targeted Fixed Prism



This is an all-metal, non-tilting prism holder with a 62-mm, sealed prism canister. The holder features both 0 and -30 mm offsets. The target/holder is constructed of durable aluminum and coated with corrosion-proof electrostatic paint, in fluorescent-orange.

ITEM#
3687

DESCRIPTION
Single Targeted Fixed Prism

Stakeout Prism



This 25 mm copper-coated prism features aluminum double yoke construction w/tilting coaxial target. There are on-board 130-minute vials, top & bottom. It includes replaceable plumb bob point. Height to center of prism w/plumb bob point: 100 mm.

ITEM#
4144

DESCRIPTION
Stakeout Prism

Peanut Prism Pack



The assembly features a 25 mm copper-coated prism, for fog prevention, a tilting holder, with friction axis, zero or -30 mm offset. It's powder painted a fluorescent orange or yellow with fluorescent yellow targets and includes a 40-min adjustable circular vial on the side or in the center.

ITEM#
0342
0290

DESCRIPTION
Peanut Prism Pack-Side Bubble
Peanut Prism Pack-Center Bubble

Leica® Style Prism



This high-quality GPH1 Swiss-style prism assembly features a copper-coated prism for consistent results and a removable target. It has a -34 mm offset prism and an 86 mm 'HT'.

ITEM#
3937

DESCRIPTION
-34Mm Leica-Style Prism

Double Right Angle Prism



This compact and precise right angle prism allows for easy determination of right angle points or perpendicular points between two targets. The protective metal cover rotates to expose the pentagonal prisms.

ITEM#
0373

DESCRIPTION
Double Right Angle Prism

Prism Poles



SECO[®] Prism Poles

Twist Lock Prism Pole

This pole features the SECO TLV™ locking mechanism. It's constructed of sturdy aluminum tubing and a two-stage brass adjustable top-threaded tip. It's finished with electrostatic powder paint coating on the outer pole and permanent silk-screened dual graduations on the inner pole.

	ITEM#	DESCRIPTION
	0280	8' Prism Pole Twist Lock
B.	0281	12' Prism Pole Twist Lock
	0283	15.6' Prism Pole Twist Lock

Compression Lock Prism Pole

This pole features a compression locking mechanism. It's constructed of sturdy aluminum tubing and a two-stage adjustable top-threaded tip. It's finished with electrostatic powder paint coating on the outer pole and permanent silk-screened dual graduations on the inner pole.

	ITEM#	DESCRIPTION
	0390	8' Prism Pole Compression Lock
C.	0391	12' Prism Pole Compression Lock

Specialty/Mini Prism Pole

This specialty pole features dual grads, adjustable tip and TLV™ lock. Extends to 5.10 ft (1.55 m), collapses to 2.70 ft (0.82 m).

	ITEM#	DESCRIPTION
D.	3720	Mini Prism Pole 2.7'-5.1'

CST[®] Prism Poles

Forget about inaccurate readings due to a slipping pole—the Quik-Lok will get the job done with its fast setup and positive clamping.

	ITEM#	DESCRIPTION
A.	0360	8' Prism Pole QL
	0361	12' Prism Pole QL

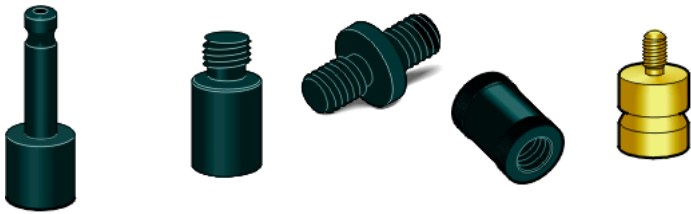
CRAIN[®] Prism Poles

Crain Composilite® poles feature a 42 ARC-minute level vial. The inner pole is dual-graduated in 10ths and metric. All Crain prism poles have a standard prism offset of 0.500ft (152.5mm). The adjustable 5/8 x 11 adapter may be preset within a 0.27ft (82.55mm) range to accommodate a broad range of prism heights. Standard features of Crain prism poles are Topo-Boot®, Grip-Tite® Locking System, and Stedi-Rest®.

	ITEM#	DESCRIPTION
E.	0258	8' Composilite Prism Pole
	0259	12' Composilite Prism Pole

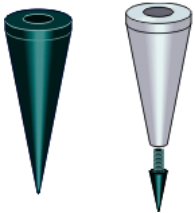
Prism Pole Accessories

Prism Pole Adapters



ITEM#	DESCRIPTION
0254	5/8X11 Prism Mount Adapter
0328	5/8X11 To 3-1/2X8 Adapter
0329	3-1/2X8 To 5/8X11 Adapter
0333	Double 5/8X11 Male Adapter
0366	GPS Quick Release
0367	GPS Quick Disconnect Adapter
0382	100mm Prism Adapter
0383	115mm Prism Adapter
4545	Prism Pole Adapter

Prism Pole Points



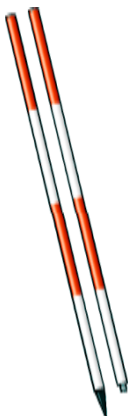
ITEM#	DESCRIPTION
0326	Prism Pole Point Solid
0327	Prism Pole Point Remov Tip

Topo Shoes



ITEM#	DESCRIPTION
0334	Topo Shoe
0335	Wide Base Topo Shoe

Range Poles



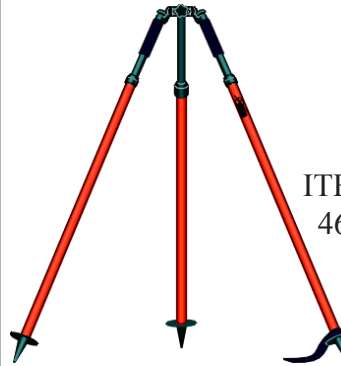
ITEM#	DESCRIPTION
0469	8' Range Pole Section
0470	4' Range Pole Section
0471	2' Range Pole Section
0472	1' Range Pole Section

SECO® Bipod



ITEM#	DESCRIPTION
3788	Seco Thumb Release Bipod

SECO® Tripod



ITEM#	DESCRIPTION
4680	Seco Thumb Release Tripod

Offset Pole Holder Kit

The Offset Pole Holder Kit allows you to perform odd setups and/or stay away from dangerous situations. The kit includes two clamps. A padded bag, allen wrench and an adapter plate for instrument tripods are also included! All items included are shown in the first photo, at right. Combine the kit with any 5/8-thread pole extension and your prism and pole for a safe and sturdy setup.



ITEM#	DESCRIPTION
3678	Offset Pole Holder Kit