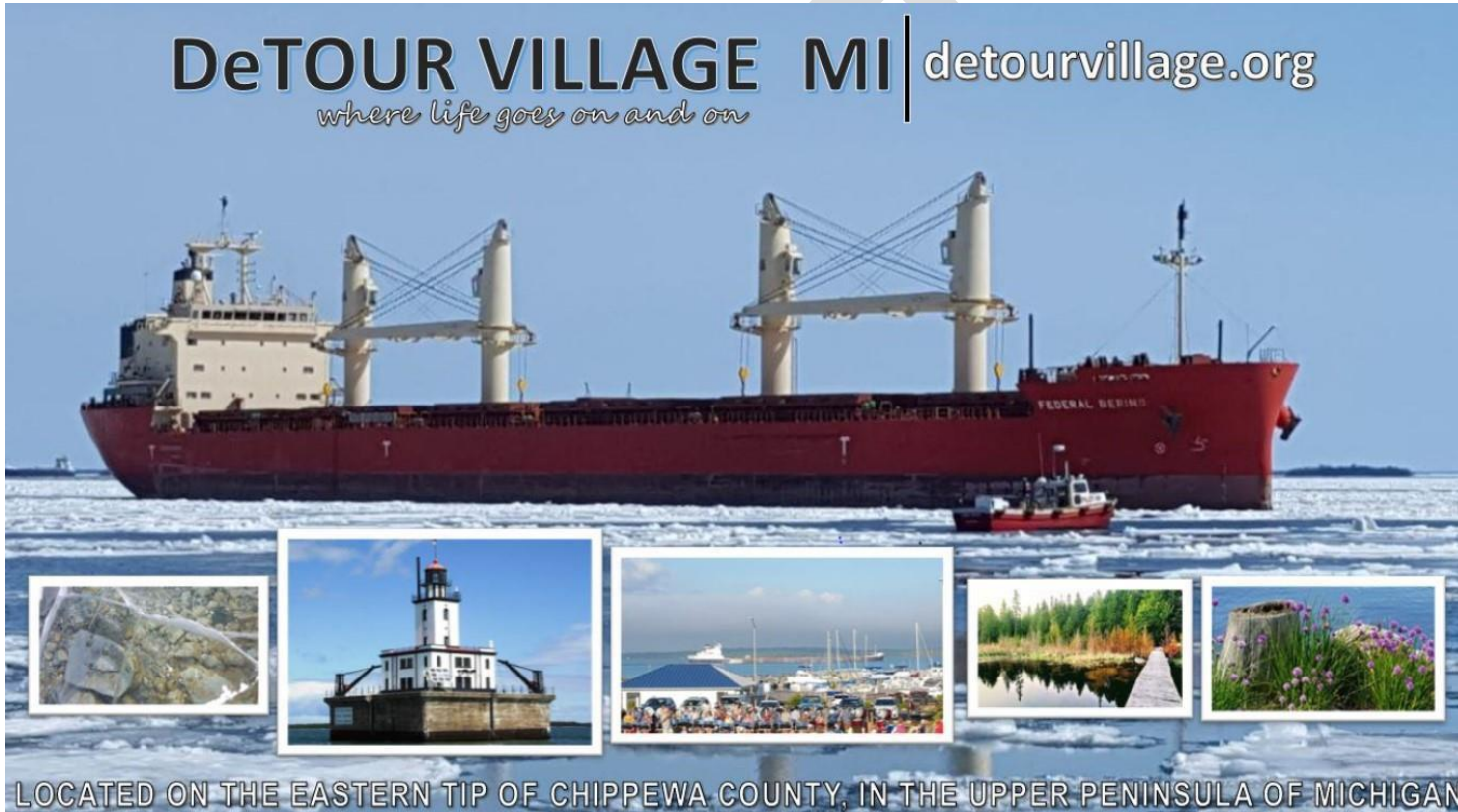


# DeTOUR TOWNSHIP & VILLAGE OF DeTOUR

## 2021-2015 PARKS & RECREATION PLAN

CHIPPEWA COUNTY, MI

**DeTOUR VILLAGE MI** | [detourvillage.org](http://detourvillage.org)  
*where life goes on and on*



LOCATED ON THE EASTERN TIP OF CHIPPEWA COUNTY, IN THE UPPER PENINSULA OF MICHIGAN

### PREPARED BY:

DeTOUR PARKS AND RECREATION COMMITTEE

DeTOUR TOWNSHIP BOARD OF TRUSTEES

DeTOUR VILLAGE COUNCIL &

EASTERN UPPER PENINSULA REGIONAL PLANNING & DEVELOPMENT COMMISSION

**Insert completed Checklist** – Is prepared. Will get signature when we get resolution

DRAFT

Insert Resolutions adopting the Plan – Meetings in September

DRAFT

### **DETOUR TOWNSHIP BOARD OF TRUSTEES**

Thomas Lehman, Supervisor  
Susie Baker, Clerk  
Sharon Hamel, Treasurer  
John Fountain, Jr., Trustee  
Robert Vaught, Trustee

### **DETOUR VILLAGE BOARD OF TRUSTEES**

Lindsey Fountain, President/Mayor  
Marilyn McGuire, Clerk  
Jennifer Postula, Treasurer  
Jeremy Vredenburg, Trustee/President Pro-Tem  
Josh Adams, Trustee  
Ronald LaMere, Trustee  
Tim Loehr, Trustee  
Shirley VanAlstine, Trustee  
Gordon Usher, Trustee

### **DETOUR TOWNSHIP CONTACT INFORMATION**

DeTour Township  
260 Superior St.  
P.O. Box 244  
DeTour Village, MI  
49725

Phone: 906.297.5304  
Fax: 906.297.8670

### **DETOUR VILLAGE CONTACT INFORMATION**

DeTour Village  
P.O. Box 397  
DeTour Village, MI  
49725

Phone: 906.297.5471  
Fax: 906.297.2107

### **DETOUR PARKS AND RECREATION COMMITTEE**

Susie Baker, Village  
Floyd Baker, Village  
Mary Hayes, Village  
James Hunt, Township  
Kris Kelley, Village

Bill Murray, Village  
Jennifer Murry, Village  
Matt Schultz, Village  
Bryan Western, Township

# Plan Contents

DeTour Township Board of Trustees.....	1
DeTour Township Contact Information.....	1
DeTour Village Board of Trustees .....	1
DeTour Village Contact Information.....	1
DeTour Parks and Recreation Committee.....	1
Plan Contents .....	2
Purpose.....	7
Vision.....	7
Community Description .....	8
<b>Location</b> .....	8
<b>History</b> .....	8
<b>Geography</b> .....	8
<b>Land Use and Land Cover</b> .....	9
<b>Transportation Connections</b> .....	9
<b>Water Resources</b> .....	10
<b>Population</b> .....	11
<b>Households and Housing Units</b> .....	12
<b>Education</b> .....	12
<b>Medical</b> .....	12
<b>Scope</b> .....	12
Administrative Structure .....	15
<b>DeTour Township</b> .....	15
<b>DeTour Village</b> .....	15
<b>DeTour Village Department of Public Works</b> .....	15

<b>DeTour Parks and Recreation Committee</b> .....	15
<b>Relationships with other Agencies &amp; Entities</b> .....	16
<b>Recreational Programming</b> .....	17
Parks and Recreation Budget & Funding .....	18
<b>Recreation Grant History</b> .....	18
Inventory .....	19
<b>Inventory Procedures</b> .....	19
PARKS and RECREATION FACILITIES LISTING .....	20
PARKS AND RECREATION FACILITIES OWNED BY THE VILLAGE OF DETOUR .....	21
1. <b>Malette Park</b> .....	21
2. <b>Olmstad Bay Information Turnout</b> .....	22
3. <b>Shula Giddens Park</b> .....	23
4. <b>DeTour Botanical Gardens</b> .....	24
5. <b>Bid Munro Natural Trail (Within DeTour Village Botanical Gardens)</b> .....	25
6. <b>DeTour Village Hall</b> .....	26
7. <b>Fish Cleaning Station</b> .....	27
8. <b>DeTour Village Veterans Park</b> .....	28
9. <b>Old Ball Field</b> .....	29
10. <b>DeTour Snowmobile Trailhead</b> .....	30
11. <b>Marina Park</b> .....	31
PARKS AND RECREATION FACILITIES OWNED BY DETOUR TOWNSHIP .....	32
12. <b>South Caribou Beach Park</b> .....	32
OTHER PARKS AND RECREATION FACILITIES IN THE DETOUR AREA .....	33
EASTERN UPPER PENINSULA TRANSIT AUTHORITY (EUPTA) .....	33
13. <b>DeTour Passage Park – (Built &amp; Maintained by EUPTA &amp; DeTour Village)</b> .....	33

14.	<b>DeTour Public Restrooms – (Maintained by DeTour Village)</b>	34
15.	<b>DeTour Passage Historical Museum – (Building Owned by EUPTA)</b>	35
	DeTOUR REEF LIGHT PRESERVATION SOCIETY (DRLPS)	36
16.	<b>DeTour Reef Lighthouse – DRLPS</b>	36
	DeTOUR AREA SCHOOLS	37
17.	<b>School Playground</b>	37
18.	<b>Richard D. Roan Gymnasium</b>	38
19.	<b>Multi-Purpose Room</b>	39
20.	<b>Raider Football Field</b>	40
21.	<b>Village Trails Snowshoe and Hiking</b>	41
	MICHIGAN DEPARTMENT OF NATURAL RESOURCES (MDNR)	42
22.	<b>DeTour State Forest Campground</b>	42
23.	<b>DeTour Passage Boat Launch (Olmstad Bay)</b>	43
24.	<b>Detour Village Boat Launch (Cunningham Street)</b>	44
25.	<b>DeTour State Harbor</b>	45
26.	<b>Caribou Lake Boat Launch</b>	46
	MICHIGAN DEPARTMENT OF TRANSPORTATION (MDOT)	47
27.	<b>Albany Bay Turnaround # 3</b>	47
28.	<b>Sand Dune Beach Turnaround #4</b>	48
29.	<b>State Roadside Park</b>	49
30.	<b>Hot Dog Stand Beach Turnaround #</b>	50
31.	<b>St. Vital Beach Turnaround #</b>	51
32.	<b>Seymour Bay Turnout</b>	52
	LITTLE TRAVERSE NATURE CONSERVANCY (LTNC)	53
33.	<b>DeTour Peninsula Nature Preserve</b>	53

34.	<b>Seymour Bay Preserve</b> .....	54
35.	<b>Ellen Elliot Weatherbee Nature Preserve</b> .....	55
36.	<b>James V. Foster / Hartley Lake Preserve</b> .....	56
Trails & Routes .....		57
37.	<b>Giwideonaning Water Trail</b> .....	57
38.	<b>Great Lakes Circle Tour</b> .....	57
39.	<b>North Huron Scenic Pathway</b> .....	57
40.	<b>M-134 Scenic Byway</b> .....	57
41.	<b>Cranberry Lake Trail</b> .....	57
42.	<b>Ziegler Trail</b> .....	57
43.	<b>Low Springer Trail</b> .....	58
Maps of DeTour Area .....		59
Site Location Map #1 .....		59
Site Location Map #2 .....		60
Landownership Map .....		61
Land Cover Map .....		62
Elevation Map .....		63
Hydrologic Map .....		64
Description of Planning & Public Input .....		65
<b>Public Input</b> .....		66
Goals & Objectives .....		71
Action Program .....		76
PUBLIC MEETING AND ADOPTION MEETING MINUTES .....		80
Post-Completion Self-Certification Reports .....		80



DRAFT

# PURPOSE

Recreation forms the foundation of our quality of life and serves as the main attraction for residents and guests. The development of this Recreation Plan has served as a vehicle for outreach to the DeTour community and the opportunity to create a blueprint which will guide the development of our recreational assets. Planning is essential for responsible management of resources and for expanding those resources for the benefit of the community.

This plan will:

- Engage partners and community members to reflect their vision for the community
- Inventory and review the status of existing assets
- Analyze the challenges and opportunities for each of our recreational assets
- Develop a strategy to make feasible and impactful improvements which will support an improved quality of life and economic growth
- Facilitate DNR grant eligibility

# VISION

To provide an array of diverse community and recreational activities in this area to serve our youth, adults, and senior citizens, as well, the thousands of tourists that travel to and through the DeTour Area annually.

# COMMUNITY DESCRIPTION

## LOCATION

Located at the tip of the eastern end of the Upper Peninsula, the DeTour Area is one of the most beautiful places in the State of Michigan. The quaint waterfront community of DeTour Village is located at the mouth of the St. Marys River (known as the DeTour Passage). This passage of water connects Lake Huron to Lake Superior and is a big part of recreation in the area. During the early days, commerce was by water and all traffic came past DeTour going to and from Mackinac Island and Detroit to Sault Sainte Marie, Lake Superior and Canada. Since ships and canoes made a turn to go west to Mackinac or southeast to Detroit, the name DeTour was given which means, in French, "the turn". The Chippewa Indian name for this area was 'Giwideonaning' meaning, "Point which we go around in a canoe".

## HISTORY

The earliest residents of DeTour were the Mascoutin, Ottawa, and Chippewa Native Americans who established encampments on Pointe DeTour well before early European travelers passed this way. Some of the early European explorers included Father Marquette, Louis Joliet, Antoine De La Cadillac and Sieur De La Salle. France claimed this North Country from 1599 to 1761, after this date allegiance was to Great Britain.

The area was organized in 1850 as Warren Township, named after Ebenezer Warren, the first postmaster of the township. The settlement was called Warrentown on an 1848 map. The name was changed to DeTour in 1856 when a new postmaster, Henry A. Williams, assumed office. It was incorporated as a village in 1899. The spelling was changed to "DeTour" in 1953 and the post office was renamed "DeTour Village" in 1961.<sup>1</sup>

## GEOGRAPHY

The United States Census Bureau provides the following statistics on the geography of the DeTour Area. DeTour Village encompasses approximately 2,600 acres on the eastern most tip of the upper mitt with an irregular shoreline varying somewhat with the Lake Huron water levels. The village has a total area of 8.38 square miles, of which 3.55 square miles is land and 4.83 square miles is water. The "downtown" section of the village is mixed use with residential and business side-by-side. The remainder of the village is residential and strung out along the shoreline of the St. Marys River. The village is laid out with two and three blocks west of the shore and about two miles north/south.

Moving inland to the west is the area governed by DeTour Township. The township has a total area of 75.5 square miles, of which 48.8 square miles is land and 26.7 square miles, or 35.35%, is water. It is bounded by the St. Marys River on the north, DeTour Village and

---

<sup>1</sup> Romig, Walter (1986) [1973]. Michigan Place Names. Detroit, Michigan: Wayne State University Press. [ISBN 0-8143-1838-X](#).

the DeTour Passage on the east, and Lake Huron on the south. Raber Township is the adjacent jurisdiction on the northwest and Clark Township and Mackinac County on the southwest border.

The two governing units of DeTour Village and DeTour Township are collectively known as the DeTour Area and often work together in many areas for the benefit of the community members and visitors. This recreation plan is being developed in cooperation of these two governing units to cover the entire scope of their jurisdictions.

## **LAND USE AND LAND COVER**

In DeTour Village land use consists of moderate density single family homes, small businesses, churches, the area school, MDNR marina and boat launch and local government facilities. The Village provides water and sewer hook-ups to about 298 metered hook-ups. Water is drawn deep in DeTour Passage and well offshore. Service is expanded to about 1,000 during the summer season.

Most streets are paved, and the main routes have an existing sidewalk. The sidewalks have barrier free curbing for those with difficulty seeing or walking. Cultural resources include the DeTour Passage Historical Museum, EUP Fine Arts Council and the local units of government. Area churches, Friends of the Library, and DeTour schools also provide and support many social and cultural events.

The terrain of the DeTour Area is gradually hilly rising from the water's edge towards the west and north away from the shorelines and consists of various limestone and loamy soils with interspersed rock formations and huge boulders among smaller rock outcroppings. Larger rocks crop out of the Niagara Escarpment formation that runs from Green Bay, WI to eastern Quebec and the Niagara Falls region. These rocks have prohibited some of the development for commercial and residential due to the high costs associated with access. The rock outcroppings also add to the beauty of the region.

Shorelines vary from small rock, stones and large boulders to white sand beaches. Areas to the west of the village proper are mostly undeveloped second growth forested land. The soils are classified as loams and mostly poorly drained. The tree types typically range from White Cedar and Balsam Fir to larger White Pine and Spruce. There are groves of Aspen on the edges of clearings and roadways. Hardwood forest cover is west of the village where Sugar Maples, Beech and Birch are dominant species. Caribou Lake lies west of the village and is the largest lake in Chippewa County.

## **TRANSPORTATION CONNECTIONS**

Recreation plays an important role in the economic base of the area. Many local businesses rely on tourism as a major source of revenue. Commercial development mixed with residential lines the main street Ontario. Ontario Street links to Highway M-134 which leads west out of town to Cedarville or east across the ferry to Drummond Island. Ferry boats capable of holding as many as 32 vehicles make the one-mile trip across the St. Marys River between DeTour and Drummond Island on an hourly basis. More than 400,000 passenger crossings are made annually.

Also leading west out of town are county roads South Caribou Lake and North Caribou Lake which connect to Highway M-48 traveling north-south linking the nearby communities of Goetzville and Raber. These are the routes that are also used by walkers and longer distance bikers. Highway M-134 is scheduled for construction in FY2020 with new pavement and wider shoulders. It connects to the bicycle lane and route into the downtown area along Huron Street. Touring bicycling groups use the county roads and highways to make the loop around the tip of the upper mitt.

The nearest air service can be found at Drummond Island, 14 miles east, and in Hessel, 26 miles west, for smaller private planes. Larger commercial and passenger airports are located at the Chippewa County International Airport in Kincheloe, 40 miles northwest, Mackinac County Airport in St. Ignace (55 southeast) and Pellston International Airport in northern Lower Michigan (80 miles).

The Eastern U.P. Transportation Authority (EUPTA) provides the ferry service to Drummond Island. The ferry has an hourly schedule which varies after midnight. In addition, EUPTA provides a bus service to Sault Ste. Marie three days a week where a connection to the Greyhound Bus system can be made.

## **WATER RESOURCES**

The St. Marys River flows down from Lake Superior, starting at the end of Whitefish Bay and flowing 74.5 miles southeast into Lake Huron, with a fall of 23 feet at the Sault Locks. For its entire length it is an international border, separating Michigan in the United States from Ontario, Canada. The narrow channel between the DeTour area mainland and Drummond Island is called the DeTour Passage where the St. Marys River and Lake Huron meet. The DeTour Harbor of Refuge marina has 80 boat slips and many facilities including boat launch ramps, a fueling station, an administration building, electrical hook ups and pump out station.

Lake Huron is the second largest of the Great Lakes, shared by Ontario and Michigan, and the fourth largest lake in the world by surface area. Huron is renowned for its beaches, sand dunes, wetlands, forests, and extensive river systems. Its coves, channels, and bays are steeped in history, including the hundreds of shipwrecks that lie beneath its surface. It is home to a variety of marshy plants and wildlife. West of DeTour Village, the northern shores of Lake Huron provide the DeTour area with beautiful, sandy beaches that are among the nicest in the world. MDOT provides turn-off areas for parking to swim or beachcomb and a rest area park with picnic and restroom facilities. There is a public boat launch access and state forest campground.

Caribou Lake is 825 acres in size and is the largest lake in Chippewa County. It is approximately 20 feet deep at its deepest point. Anglers can expect to catch a variety of fish including Northern Pike, Rock Bass, Smallmouth Bass, Walleye and Yellow Perch. There is a public boat access and a township-owned park for picnicking and swimming. Other recreational opportunities include boating, paddling, sailing, ice fishing, snowmobiling and ice skating.

In addition, there are numerous wetlands and natural habitat areas that provide home to many species of birds and wildlife.

## POPULATION

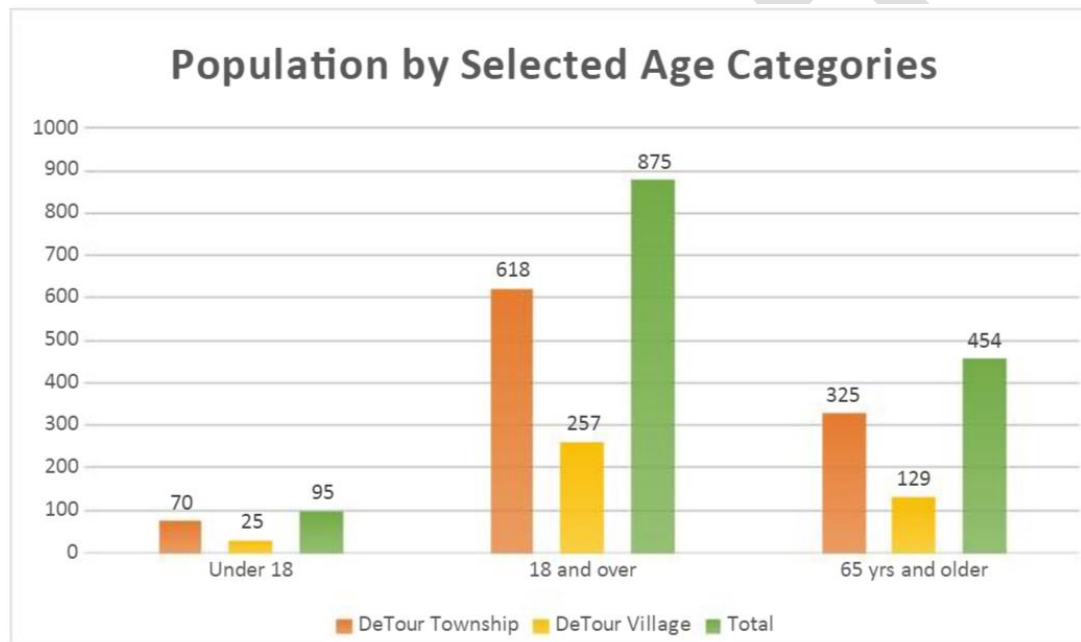
Of the 970 people that live in the DeTour Area 72 are under the age of 18 with 73% of the population over the age of 50.

The average age is 63.

970 breaks down to 688 Township residents and 282 Village residents

47% of the 970 are 65 years of age or older

88 of the people age three years and older are enrolled in school.



For years, the median age in the state of Michigan has been rising, yet the largest age group remains in the workforce- people ages 45 to 55. In contrast, the DeTour Area population is much older, with 46% of the population 65 and older, compared to 15.08% in Chippewa County and 15.42% in the State.

This age distribution could be explained by the fact that the DeTour Area's many recreational opportunities, relatively low home cost, and beautiful setting attract many retirees, however limited year-round employment and economic opportunity have also discouraged younger generations from making DeTour their year-round home. Children represent only 9.5% of the population, compared with 21.69% of Chippewa County's population, and over a quarter of the population of Michigan.

## **HOUSEHOLDS AND HOUSING UNITS**

There are 515 households in the DeTour Area. The average household size in Michigan is 2.49, in Chippewa County it falls to 2.34, and decreases still further in DeTour to 1.89. There are 1,100 housing units with 495 units occupied. Of the vacant housing units 85% are seasonal, recreational, or occasional use.

## **EDUCATION**

The DeTour Arts & Technology Academy provides education for kindergarten through 6<sup>th</sup> grade for students in the DeTour Area and in the outlying communities of Goetzville and Raber in neighboring Raber Township. There is also a pre-school and elementary school located on Drummond Island. The DeTour Area Schools provides middle and high school education for Drummond Island students, as well as, the others listed above. Although no longer the case, DeTour Area and Les Cheneaux Area Schools in Cedarville have partnered in the recent past to combine football teams in efforts to keep the sports program going. The school provides an outside playground area, lighted football field and inside basketball gymnasium and multipurpose room with weight and exercise equipment.

The nearest university is Lake Superior State University located in Sault Ste. Marie, 55 miles to the north. Bay Mills Indian Community offers the Bay Mills Community College about 70 miles away.

## **MEDICAL**

The nearest medical service is the Drummond Island Medical Center or 30 miles away in Cedarville. The nearest hospitals are located in Sault Ste. Marie and St. Ignace both about 55 miles away. The village and township do have volunteer EMT service along with a volunteer fire department. Of the village residents, 11.7% do not have health insurance, much higher than Chippewa County (9.8%) and Michigan (8.41%). Only about 6.7% of Township residents are uninsured.

## **SCOPE**

It is not just the members of these two communities that make use of the recreational facilities located in the DeTour Area, but also members of neighboring jurisdictions of Drummond Island, Raber, and Clark Townships, Chippewa and Mackinac Counties, the many seasonal residents and touring visitors who influx the area during all seasons.

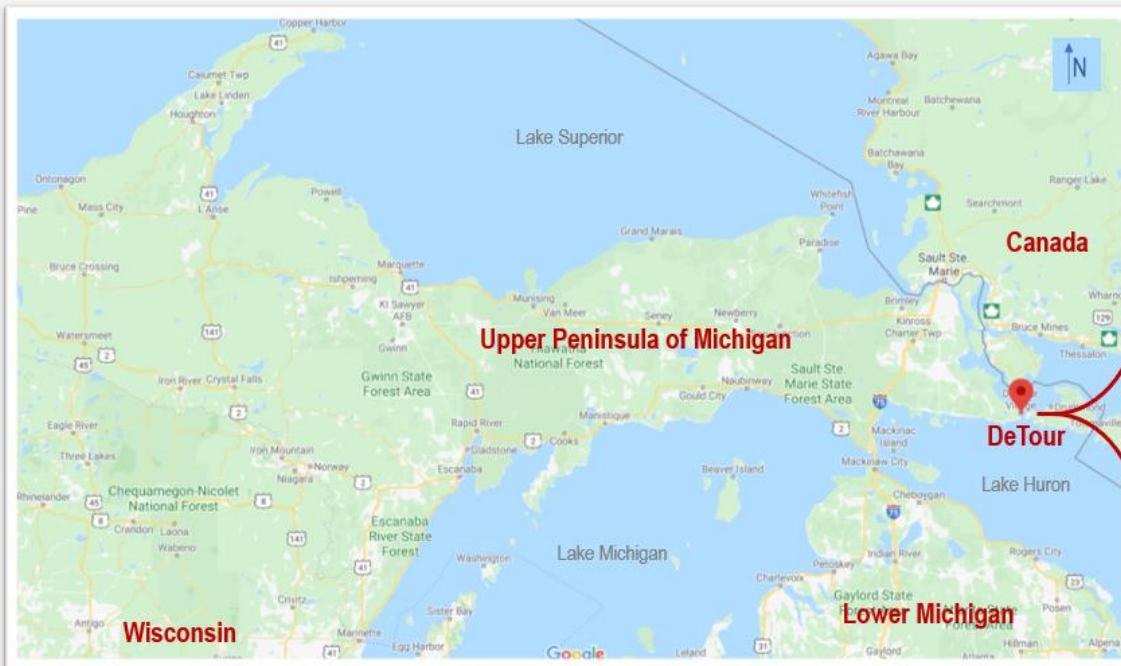
With the surrounding waters, watersheds and natural forested areas the DeTour Area provides many varieties of recreation which covers the four seasons. Spring-time brings out the mushroom hunters and bird watchers, while the autumn months provide opportunities for hunting and fall color tours. The summer leads to fishing and water enjoyment and the winter to crisp, white scenery and a variety of ways to enjoy the outdoors.

Fishing, hunting, boating (both motorized and non-motorized), snowmobiling, orv-atv trail riding, horseback riding, swimming, scuba diving, cross country skiing, ice skating, and snowshoeing are examples of these all-season recreational opportunities. The area has many trails, sidewalks, and rural roads for walking, biking, equestrian and motorized use. There are many places with public access to the water for boating, fishing, swimming, paddling, sailing, beachcombing, sunbathing, or freighter watching. There are facilities for

picnicking, gardening, and community or family gatherings owned by a variety of local, State and public agencies. There are multiple fishing tournaments, festivals, annual parades, community sports and exercise opportunities that require the effort of many volunteers and small staff of the village.

DRAFT





## DeTour Village MI

Located on the Eastern Tip of the Upper Peninsula of Michigan  
Five Year Parks & Rec Plan 2021-2025 (07/20/2020)



# ADMINISTRATIVE STRUCTURE

## **DeTOUR TOWNSHIP**

DeTour Township administrative duties are handled by the Township Board of Trustees. This Board consists of five elected members: supervisor, clerk, treasurer, and two trustees and holds the power to commit funds for parks and recreation, accept grants, and purchase land on behalf of the Township.

## **DeTOUR VILLAGE**

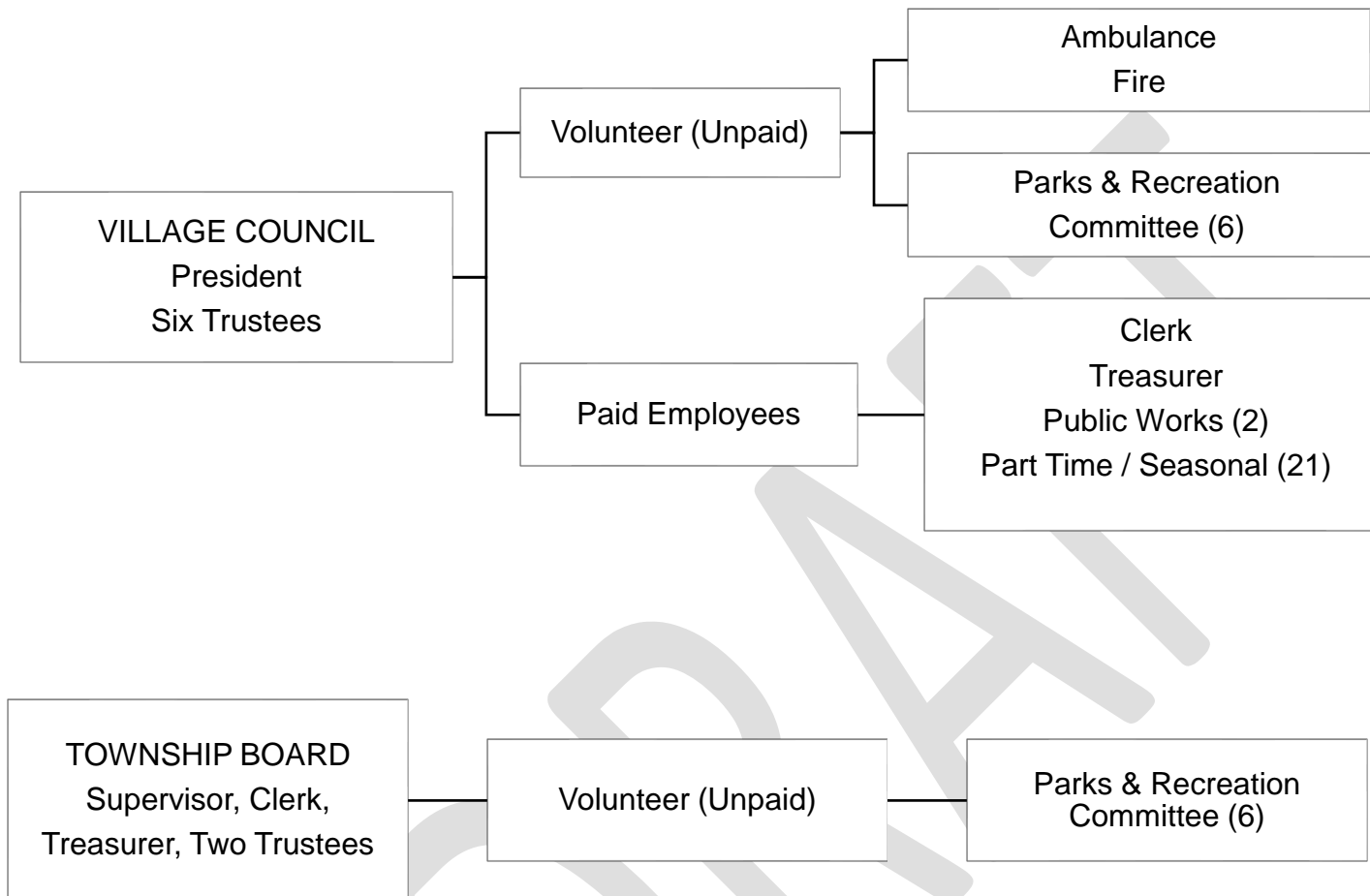
DeTour Village administrative duties are handled by DeTour Village Council. This Council consists of 7 elected members: president/mayor and six trustees. These elected positions are chosen by registered voters in at-large elections held every other November. The terms of office for the president and trustees are staggered in four-year terms. The Clerk and Treasurer positions are by appointment and have no voting powers. The Village Council holds the power to commit funds for parks and recreation, accept grants, and purchase land on behalf of DeTour Village. DeTour Village has two full-time public works employees plus one or two seasonal part-time employees.

## **DeTOUR VILLAGE DEPARTMENT OF PUBLIC WORKS**

The Village of DeTour employs 2 full-time employees plus seasonal help to fulfill the duties of the Department of Public Works and the Water Department, which includes maintaining the park system. The Parks & Recreation Committee works closely with the staff in the maintenance of parks and trails, as well as with the necessary activities required to host annual events.

## **DeTOUR PARKS AND RECREATION COMMITTEE**

An appointed Parks & Recreation Committee was formed in 2016 to assist in maintaining and developing recreational opportunities within the DeTour area. The recreation committee is a voluntary committee with members appointed by both the DeTour Township Board and the DeTour Village Council.



### RELATIONSHIPS WITH OTHER AGENCIES & ENTITIES

DeTour Township and Village work in conjunction with the following entities regarding funding support, providing recreational opportunities, and technical assistance:

- Eastern Upper Peninsula Transportation Authority (EUPTA)
- Eastern Upper Peninsula Regional Planning & Development Commission (EUPRP&DC)
- Little Traverse Conservancy
- Michigan Department of Natural Resources
- United States Coast Guard
- U.S. Army Corps of Engineers
- Sault Ste. Marie Tribe of Chippewa Indians
- Local Organizations and Businesses
- Neighboring Communities

Numerous organizations and volunteers are involved with the improvement and operation of the recreational facilities within the DeTour area:

- Friends of DeTour Library (FODL) is a non-profit organization supporting the library and many of its activities via fund raisers, memberships, and donations.
- The DeTour Reef Light Preservation Society (DRLPS) has worked diligently since 1998 to restore and preserve the DeTour Reef Light located one mile offshore in northern Lake Huron.
- Caribou Lake Association promotes the protection and maintenance of a healthy Caribou Lake.

## **RECREATIONAL PROGRAMMING**

The DeTour Area Parks & Recreation Committee oversees the parks and recreation activities and programs and makes recommendations to the DeTour Village Council or DeTour Township Board of Trustees. The Village public works department maintains the ball field, several park areas, and supports volunteer events and Fourth of July Fireworks. The Community Hall is also available at no cost for free community fitness classes and other recreational group meetings. Pickleball is offered at the DeTour School Multi-purpose room. Future recreation programs include beach volleyball. Distinct from the township or village, there are numerous recreational and hobby groups including:

- DeTour Reef Lighthouse Preservation Society
- Sportsman's Club
- Scouts
- Motorized Trail Group (ORV, Snowmobiling)
- Non-motorized Trail Group (Hiking, Biking)
- Local Service Clubs (Lions Club, Moose Lodge)
- Local Sports Leagues (Basketball, Volleyball)
- M134 North Huron Scenic Byway Advisory Committee
- Steward of Michigan Nature Association
- Little Traverse Conservancy Volunteers
- Michigan Trail Riders
- Friends of the Library
- Local Committees

## Parks and Recreation Budget & Funding

Monies invested in parks and recreation for DeTour Village have come from the general fund, fundraising, grant monies, and donations. The Botanical Gardens, Library, Ski Trail, Veterans Park, Pickleball, and Parks all have specified accounts and operating budget lines. DeTour Township also invests in parks and recreation for the Township with monies from the general fund, fundraising, grant monies and donations. Collaboration between the two entities is made on many festivals, events and maintenance required. The DeTour Area Parks & Recreation Committee plans to work with the Village Council and Township Board on future allocations.

### Current Fund Balances:

Village	\$ 9,816.11
Botanical Gardens	\$13,733.69
Veterans Park	\$29,735.61
Trails	\$ 1,874.32

<b>Park Budget:</b>	<b>BUDGET</b>	<b>SPEND</b>
FY2017/2018	\$ 6,000	\$ 4,885
FY2018/2019	\$ 6,000	\$ 9,741
FY2019/2020	\$10,300	\$ 7,883
FY2020/2021	\$ 9,000	

### RECREATION GRANT HISTORY

There have been no previous MDNR Recreation Grants received by DeTour Village or DeTour Township. An application for Passport funds and Trust Fund funds was submitted in FY 2020 for the Veterans Memorial Park.

# INVENTORY

## **INVENTORY PROCEDURES**

The methods used by EUPRP&DC staff to compile this recreational inventory include verification and compilation of information from the previous recreation plan, site visits, research of internet resources including Google, [www.landtrust.org](http://www.landtrust.org), [www.michigandnr.com/parksandtrails/Default.aspx#map-tab](http://www.michigandnr.com/parksandtrails/Default.aspx#map-tab), Conservation And Recreation Lands (CARL), and additional Geographic Information Systems data possessed by EUPRP&DC. The DeTour Area Parks & Recreation committee reviewed and provided additional pictures and information. Compiled information was compared to existing information to ensure consistency and/or accuracy.

The assets inventoried below are all located in DeTour Area and serve residents in addition to thousands of visitors every year.

### ADA COMPLIANCE RANKING EACH FACILITY:

- 1 = None of the facilities/park area meets accessibility guidelines.
- 2 = Some of the facilities/park area meets accessibility guidelines.
- 3 = Most of the facilities/park area meets accessibility guidelines.
- 4 = The entire facility/park area meets accessibility guidelines.
- 5 = The entire facility/park area was developed/renovated using the principals of universal design.

## PARKS AND RECREATION FACILITIES LISTING

<b>Num</b>	<b>Owner</b>	<b>Site</b>	<b>Num</b>	<b>Owner</b>	<b>Site</b>
1	DeTour Village	<a href="#">Malette Park</a>	27	MDOT	<a href="#">Albany Bay Turnout</a>
2	DeTour Village	<a href="#">Olmstad Bay Information Turnout</a>	28	MDOT	<a href="#">Sand Dune Beach Turnout</a>
3	DeTour Village	<a href="#">Shula Giddens</a>	29	MDOT	<a href="#">State Roadside Park</a>
4	DeTour Village	<a href="#">Botanical Gardens</a>	30	MDOT	<a href="#">Hot Dog Stand Beach Turnout</a>
5	DeTour Village	<a href="#">Bid Munro Natural Trail</a>	31	MDOT	<a href="#">Saint Vital Bay Turnout</a>
6	DeTour Village	<a href="#">DeTour Village Hall</a>	32	MDOT	<a href="#">Seymour Bay Turnout</a>
7	DeTour Village	<a href="#">Fish Cleaning Station</a>	33	LTNC	<a href="#">DeTour Peninsula Preserve</a>
8	DeTour Village	<a href="#">Veterans Park</a>	34	LTNC	<a href="#">Seymour Bay Preserve</a>
9	DeTour Village	<a href="#">Old Ball Field</a>	35	LTNC	<a href="#">Ellen Elliot Weatherbee Preserve</a>
10	DeTour Village	<a href="#">Snowmobile Trail Head</a>	36	LTNC	<a href="#">James Foster / Hartley Lake Preserve</a>
11	DeTour Village	<a href="#">Marina Park</a>	37	Miscellaneous	<a href="#">Trails and Routes</a>
12	DeTour Township	<a href="#">South Caribou Lake Park</a>			
13	EUPA	<a href="#">Passage Park</a>			
14	EUPA	<a href="#">Public Restrooms</a>			
15	DPHMS	<a href="#">DeTour Passage Historical Museum</a>			
16	DRHPS	<a href="#">DeTour Reef Lighthouse Museum</a>			
17	DeTour Schools	<a href="#">Children's Playground</a>			
18	DeTour Schools	<a href="#">Richard D Roan Gymnasium</a>			
19	DeTour Schools	<a href="#">Multipurpose Room</a>			
20	DeTour Schools	<a href="#">Raider Football Field</a>			
21	DeTour Schools	<a href="#">Village Trails – Snowshoe &amp; Hiking</a>			
22	MDNR	<a href="#">DeTour State Forest Campground</a>			
23	MDNR	<a href="#">DeTour Passage Boat Launch</a>			
24	MDNR	<a href="#">DeTour Village Boat Launch</a>			
25	MDNR	<a href="#">DeTour State Harbor</a>			
26	MDNR	<a href="#">Caribou Lake Boat Launch</a>			

# PARKS AND RECREATION FACILITIES OWNED BY THE VILLAGE OF DETOUR

## 1. **MALETTE PARK**

Type: Community Park  
Size: Approximately 2 Acres  
Location: 45.9797728, -83.9083418  
Accessibility: 3  
Map: #2  
Website: <http://www.detourvillage.org/malette-park.html>

[RETURN TO INVENTORY LISTING](#)

Located on Olmstad Bay just south of town on M-134, Malette Park offers families a great picnic, swimming, fishing, freighter watching, kayaking, and boating spot on the St Marys River. The park includes 8 picnic tables, seven charcoal grills, a fantastic sandy beach with volleyball (adding in 2020), and plenty of sun and shade. MDNR's DeTour Passage Boat Launch on the south end of this park allows for all around fun. Maintenance includes beach and park clean-up, regular mowing and trimming, picnic table repair/replacement/refurbishment, and grill cleaning/replacement. Improvement plans include partnering with MDNR to establish a link between Malette Park and adjoining boat launch, offering a wooden path connection, kayak launch site and shared parking. Additionally, we are planning to expand the beach area, improve parking area, expand park on north end to connect with information area and add cohesive village signage. As a secondary access site to the Giwideonaning segment of the Lake Huron Water Trail, suggested improvements include adding a confidence marker or wayfinding signage visible from the water.





## 2. OLMSTAD BAY INFORMATION TURNOUT

Type: Neighborhood Park  
Size: Approximately 1 Acre  
Location: 45.9803, -83.907  
Accessibility: 4  
Map: #2

Website: <http://www.detourvillage.org/malette-park.html>

[RETURN TO INVENTORY LISTING](#)

An extension of Malette Park, Olmstad Bay Information Turnout offers a kiosk filled with information on area events and attractions. A viewing platform has a staircase down to the rocky beach. Two benches face the bay offering amazing views of the St Marys River and nautical traffic. A table and charcoal grill are steps from the parking lot inviting all travelers. Park here & walk approximately 150 feet to a sandy beach and remainder of Malette Park. An ADA table on a concrete pad will replace current picnic table in the summer of 2020. Maintenance activities include beach clean-up, mowing and trimming, planting/maintaining flower beds, cleaning/restocking/maintenance of information building, deck/stairs assess and maintenance. Improvements include merging with Malette park and adding cohesive village signage.



### 3. **SHULA GIDDENS PARK**

Type: Neighborhood Park

Size: .14 Acres

Location: 45.985846, -83.902108

Accessibility: 4

Map: #2

Website: <http://www.detourvillage.org/shula-giddens-park.html>

[RETURN TO INVENTORY LISTING](#)

Back in the day this was THE spot. Kids in town headed to the fishing pier to swim, fish, and just plain hang out. Now known as Shula Giddens Park, it is a nice place to dip your toes into the cool water of the St Marys, do some stone picking, watch freighters, enjoy a picnic and maybe paddle out to Frying Pan Island. It is right in town. This park features two benches and two picnic tables. There is a gazebo for sitting in the shade, hosting a small band, or perhaps holding a wedding. The “Philo” (retired pilot boat built locally in 1947) has its resting place on shore within this park for public viewing. Shula Giddens Park ushers you into our beautifully unique Botanical Gardens. Maintenance activities include maintenance of boat and gazebo (fundraising as needed), beach clean-up, regular mowing and trimming. Improvements include re-establishing pier or dock for fishing and swimming, add snowshoe trail loop in winter, add bike rack, and cohesive village signage. As a primary access site for the Giwideonaning Water Trail segment designating a kayak drop-off area, improving access to launch, and adding access site sign visible from water and water trail wayfinding signage are suggested improvements.



#### 4. **DeTOUR BOTANICAL GARDENS**

Type: Community Park  
Size: Approximately .6 Acres  
Location: 45.986651, -83.901825  
Accessibility: 3  
Map: #2  
Website: <http://www.detourvillage.org/botanical-gardens.html>

[RETURN TO INVENTORY LISTING](#)

DeTour Botanical Gardens are very special to our community. Lined with uniquely designed garden plots placed in memory of a loved one, these gardens are lovingly maintained by donors and volunteers. This park sits along the west shore of the St Marys River offering a quiet reflecting venue with winding walking trails guiding you past individual gardens and welcoming benches for freighter and marine traffic viewing. Bird watching, stone picking, picnics, family gatherings and even weddings are activities you will see among the blossoms. Located on the south end of DeTour Village, this beautiful park is within walking distance of the business district. Parking is at Shula Giddens Park. Maintenance activities include spring and fall planting and cleanup of flower beds, beach clean-up, mowing and trimming of the park, and mulching of pathways. Improvements include adding cohesive village signage, winter snowshoe trail loop, and establishing events such as concerts, artistic workshops, and/or naturalists learning opportunities. A three sided holding shed for soil, mulch and debris pickup, along with a shed for port-a-john is planned for 2020/2021.



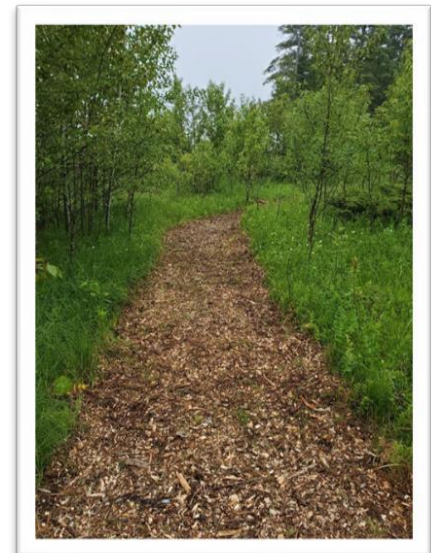
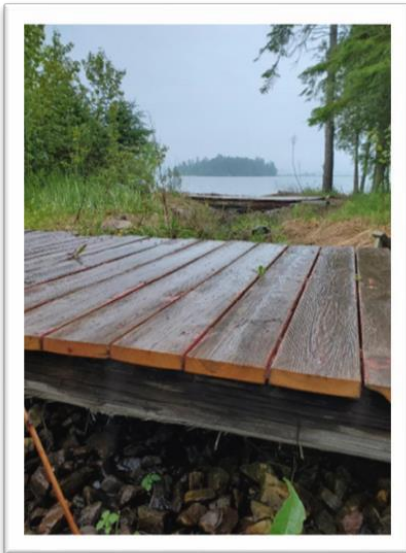


## 5. **BID MUNRO NATURAL TRAIL (WITHIN DETOUR VILLAGE BOTANICAL GARDENS)**

Type: Park Trail  
Size: Approximately .3 Acres  
Location: 45.987557, -83.901599  
Accessibility: 2  
Map: #2  
Website: <http://www.detourvillage.org/bid-munro-natural-trail.html>

[RETURN TO INVENTORY LISTING](#)

Bid Munro Natural Trail, located on the north end of DeTour Village Botanical Gardens, is under design and development. Improvements include a gateway entrance to walking trails looped through the property that begin on the corner of Ontario and Huron Streets and wind through natural terrain, leading to 2 separate foot bridges escorting you into Botanical Gardens. Along the route you will see plants and trees that attract birds and butterflies, a foot bridge over low terrain, multiple bird houses, and a beautiful view of the St Marys River. When trails are complete they will be connected to a snowshoe route connecting Shula Giddens, Botanical Gardens and Bid Munro parks. Maintenance activities will include beach clean-up, mulching of pathways, and maintaining footbridges.



## 6. DeTOUR VILLAGE HALL

Type: Special Use

Size: .74 Acres

Location: 45.990387, -83.900946

Accessibility: 4

Map: #2

Webpage: <http://www.detourvillage.org/township---village-offices.html>

[RETURN TO INVENTORY LISTING](#)

The DeTour Village Hall includes office space for the Village of DeTour and DeTour Township. The hall has seating capacity of 75 with tables and chairs, full commercial kitchen, restrooms, and parking. A village owned lot is across the street makes this a unique indoor/outdoor rental offering overlooking the St Mary's River.



## 7. **FISH CLEANING STATION**

Type:

Special

Size: .11 Acres

Location: 45.991273, -83.903564

Accessibility: 4

Map: #2

Webpage: <http://www.detourvillage.org/fishing.html>

[RETURN TO INVENTORY LISTING](#)

A free indoor fish cleaning station is available to residents, visitors, and tourists of DeTour Village. Located four blocks from Cunningham Street Public Boat Launch, this indoor station offers stainless steel cleaning services with running water, spray hose, garbage bags and a freezer to store waste. Commercial and charter fishing companies are charged based on use. Future improvements include a fish catching photo board, painted building and upgraded landscaping.



## 8. DeTOUR VILLAGE VETERANS PARK

Type: Community Park

Size: .11 Acres

Location: 45.991729, -83.904578

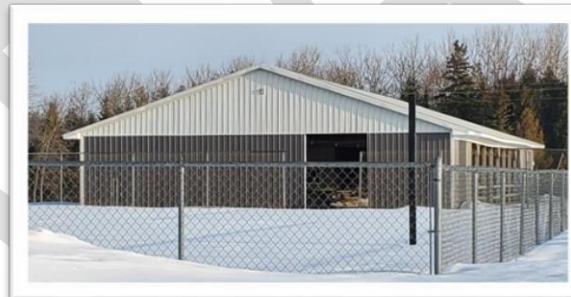
Accessibility: 4

Map: #2

Website: <http://www.detourvillage.org/veterans-park.html> and <http://www.detourvillage.org/pickleball.html>

[RETURN TO INVENTORY LISTING](#)

Located two blocks west of main street (Ontario Street) in the village, [Veterans Park](#) is home to community events, family gatherings and outdoor weddings. It has a large pavilion with 10 picnic tables, a performance stage, kitchen, serving room, and open park area with ample parking. DeTour School Playground adjoins Veterans Park. Future planned development has a Veterans Circle with military flags and benches, a memorial wall, restrooms, pickleball courts, a basketball court, fence improvements, adding ADA accessible pathway, and adding a bike rack and cohesive village signage. Garage doors along east and west walls, trails connecting various parks, and disc golf course spanning multiple locations are also considerations. Maintenance activities include regular mowing and trimming, spring and fall opening and closing of pavilion.





## 9. OLD BALL FIELD

Type: Mini-Park  
Size: Approximately .4 Acres  
Location: 45.991974, -83.906154  
Accessibility: 3  
Map: #2  
Website:

The old ball field is not currently used as a ball field. This lot is used for activities during community events such as Independence Day celebrations. Future improvement ideas include adding cohesive village signage, removing back stop and utilize space for other activities, such as begin and end location to disc golf course, fitness trail and hiking trail, all of which could span along Veterans Park, Old Ball Park, School, Football Field and Ski Trails. Plus build shared parking lot with snowmobile trail head, and potential for dog walking area.. Other options include reestablishing a ball field and start sports leagues such as t-ball, little league, or softball, and adding a dog walk area.





## 10. **DeTOUR SNOWMOBILE TRAILHEAD**

Type: Mini-Park  
Size: Approximately .4 Acres  
Location: 45.992477, -83.905830  
Accessibility: 3  
Map: #2  
Website: <http://www.detourvillage.org/snowmobiling-.html>

DeTour snowmobile trailhead has parking for trails in and around DeTour, Drummond Island (offering 90 miles of trails), and surrounding communities. Our trails connect to upper peninsula trail systems offering hundreds of miles of snowmobiling. During warmer months parking is used for activities at the Old Ball Field, Veterans Park, and local hikers. Improvement ideas include upgrade of trail signage inviting riders into our community, upgraded parking, and exploring easement rights and land acquisition if/when available.



## 11. **MARINA PARK**

Type: Community Park

Size: .39 Acres

Location: 45.998177, -83.901393

Accessibility: 3

Map: #2

Website: <http://www.detourvillage.org/marina-park.html>

[RETURN TO INVENTORY LISTING](#)

Host to our summer outdoor concert series as well as community festivals, Marina Park overlooks DeTour State Marina and Harbor and is in the village on our main street, Ontario Street. The views are amazing, and the venue is cozy. Improvements include creating a permanent stage on south side of water plant building, adding an awning over stage, adding an awning on west side of building, adding outdoor access to water and electric on south and west sides of building, painting water building, adding pavers denoting property lines, and adding cohesive village signage. Enhance collaboration with neighboring MDNR for improved relations, shared events, and cohesive visual flow.



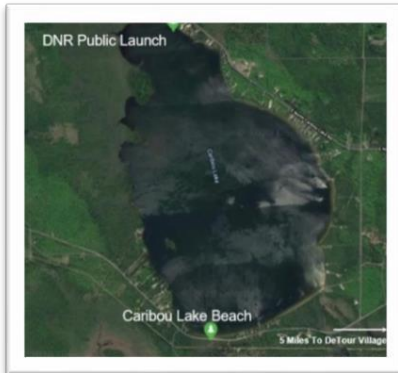
# PARKS AND RECREATION FACILITIES OWNED BY DETOUR TOWNSHIP

## 12. **SOUTH CARIBOU BEACH PARK**

Type: Community Park  
Size: 1.1 Acres  
Location: 45.9854677, -83.994529  
Accessibility: 3  
Map: #2  
Website: <http://www.detourvillage.org/caribou-lake-park.html>

[RETURN TO INVENTORY LISTING](#)

A beautiful lake just west of town, Caribou Lake provides boating, fishing, kayaking and swimming in the summertime, and fishing, skating and snowmobiling in the winter. South Caribou Beach includes 1 picnic table, a charcoal grill, and a sandy beach area with a roadside turnout. Improvements include replace/add benches and add cohesive park signage and a “no lifeguard” sign, add additional seating and sandy area, and add a floating dock for swimmers. Maintenance activities include beach clean-up, amenities assessment and maintenance as needed.



## OTHER PARKS AND RECREATION FACILITIES IN THE DETOUR AREA

### EASTERN UPPER PENINSULA TRANSIT AUTHORITY (EUPTA)

#### **13. DeTOUR PASSAGE PARK – (BUILT & MAINTAINED BY EUPTA & DeTOUR VILLAGE)**

Type: Mini-Park  
Size: .1 Acres  
Location: 45.991938, -83.898753  
Accessibility: 3  
Map: #2  
Website:  
<http://www.detourvillage.org/passage-park.html>

[RETURN TO INVENTORY LISTING](#)

In a partnership between EUPTA and DeTour Village and DeTour Township, this fantastic viewing spot has been transformed into a pocket park. Passage Park overlooks Drummond Island Ferry Dock and the St Marys River at DeTour Passage. Two tables and two benches offer respite to travelers and locals alike. A paved parking area and public restrooms nearby at DeTour Passage Historical Museum make this spot an ideal trailhead connection to bike lane along Huron Street. Future improvements include flower planting and landscaping around village lift station.



#### 14. DeTOUR PUBLIC RESTROOMS – (MAINTAINED BY DeTOUR VILLAGE)

Type: Special Use  
Size: Building  
Location: 45.992497, -83.899244  
Accessibility: 4  
Map: #2

[RETURN TO INVENTORY LISTING](#)

Within the same building as DeTour Museum, a single stall men and single stall women restroom are available to the public. Building is owned by EUPTA and restrooms are maintained by DeTour Village. Future improvements include painting to match village buildings.





## 15. DeTOUR PASSAGE HISTORICAL MUSEUM – (BUILDING OWNED BY EUPTA)

Type: Special Use  
Size: .25 Acres  
Location: 45.992449, -83.899130  
Accessibility: 4  
Map: #2  
Website:

[RETURN TO INVENTORY LISTING](#)

The DeTour Passage Historical Museum (DPHM) features displays relating to early marine operations, social and governmental activities, pioneer families, Native American history, and life in the early years of the DeTour area. Collections include a Fresnel Lens from the DeTour Reef Lighthouse, old school bell, military display, and many photographs. DPHM is a non-profit organization run by volunteers. The building is owned by EUPTA and maintained and occupied by DPHM.



# DETOUR REEF LIGHT PRESERVATION SOCIETY (DRLPS)

## 16. DeTOUR REEF LIGHTHOUSE – DRLPS

Type: Special Use  
Size: Structure in St Mary's River  
Location: 45.949153, -83.903063  
Accessibility: 3  
Map: #1  
Website: <http://drlps.com/>

[RETURN TO INVENTORY LISTING](#)

Since 1847, a lighthouse has been located at DeTour Passage at the northwestern head of Lake Huron at the mouth of St. Marys River, which connects Lake Huron to Lake Superior. The current lighthouse, DeTour Reef Light, is located a mile offshore from the original onshore lighthouse and was built in 1931. It is well known to ship captains and pleasure boaters who sail the upper Great Lakes. The lighthouse stands as a testament to the importance of shipping in the region's political, economic, and social history. Owned and maintained by DRLPS, this lighthouse is maintained by volunteers and is open to the public through various programs.



# DETOUR AREA SCHOOLS

## 17. SCHOOL PLAYGROUND

Type: School-Park

Size: Approximately .25 Acres

Location: 45.991446, -83.905080

Accessibility: 3

Map: #2

Website: <https://detourata.eupschools.org/> and <http://www.detourvillage.org/play-ground.html>

[RETURN TO INVENTORY LISTING](#)

Nestled between DeTour Area School and Veterans Park our playground offers a wide variety of climbing equipment, swings and slides. With adjacency to school and village property, children have access to open space, a wooded area for tree climbing, an old ball field, plus the community pavilion for sheltered play.



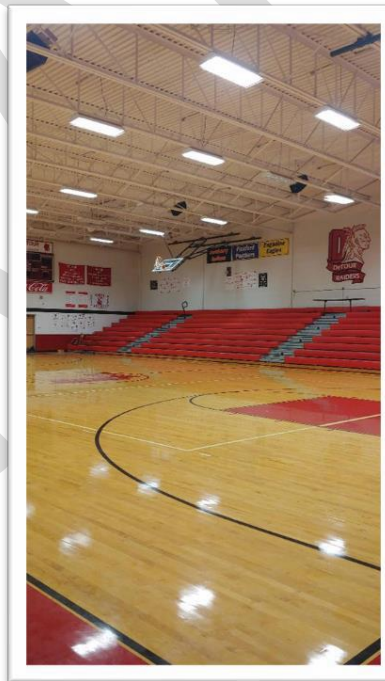


## 18. RICHARD D. ROAN GYMNASIUM

Type: School-Sports Complex  
Size: Within Building  
Location: 45.990278, -83.905976  
Accessibility: 4  
Map: #2  
Website: <https://detourata.eupschools.org/>

[RETURN TO INVENTORY LISTING](#)

Richard D. Roan Gymnasium, home of DeTour Raiders, has a seating capacity of 500. In addition to school sports of basketball and volleyball, this gym is used for school functions and community events.

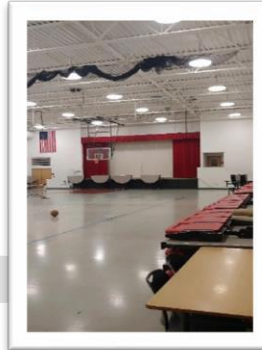


## 19. MULTI-PURPOSE ROOM

Type: School - Special Use  
Size: Within Building  
Location: 45.990677, -83.906107  
Accessibility: 4  
Map: #2  
Website: <https://detourata.eupschools.org/>

[RETURN TO INVENTORY LISTING](#)

During school hours the Multipurpose Room is our school cafeteria and holds some gym and band classes. At the north end of the room is a large stage and band room. School and community plays, recitals, concerts, and carnivals are held within these four walls. The Village also offers open play pickleball on three courts six days a week in this well used room.

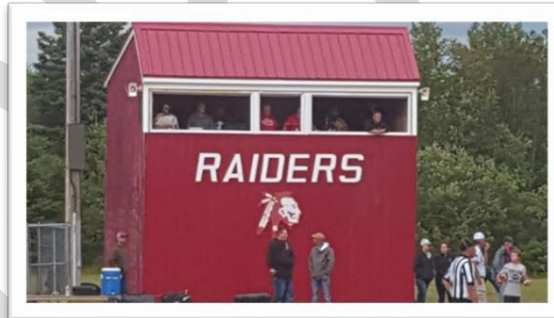


## 20. RAIDER FOOTBALL FIELD

Type: School – Sports Complex  
Size: 55.8 Acres (Entire School Complex)  
Location: 45.990200, -83.909792  
Accessibility: 4  
Map: #2  
Website: <https://detourata.eupschools.org/>

[RETURN TO INVENTORY LISTING](#)

Community and school football programs, antique snowmobile races, and horse pulls are a few of the activities held at Raider Field. With a two-story press box, bleachers along both the north and south side of field, lighting, a concession building, and ample parking, Raider Field is an attractive venue. DeTour community trails are located at the west end of this parking lot.



## 21. **VILLAGE TRAILS SNOWSHOE AND HIKING**

Type: Park Trail – Type III  
Size: Included in School Complex  
Location: 45.988491, -83.910823  
Accessibility: 1  
Map: #2  
Website: <http://www.detourvillage.org/snowshoe-cross-country-ski.html>

[RETURN TO INVENTORY LISTING](#)

Five miles of hiking trails in summer turn into groomed snowshoe and cross-country ski trails in the winter months. Several looped trails are marked and await your exploration. Built and maintained by a volunteer group of residents, these trails are found behind DeTour Public Schools at the west end of Raider Football Field, with access off South Caribou Lake Road. Two annual festivals are held on our trails: Winter Evening on the Trails and Spook Night. Improvements include replacement and upgrade of wayfinding signs, additional of storage building and cohesive village signage.





# MICHIGAN DEPARTMENT OF NATURAL RESOURCES (MDNR)

## 22. DeTour State Forest Campground

Type: Special Use

Size: 325 Acres

Location: 45.958343, -84.000612

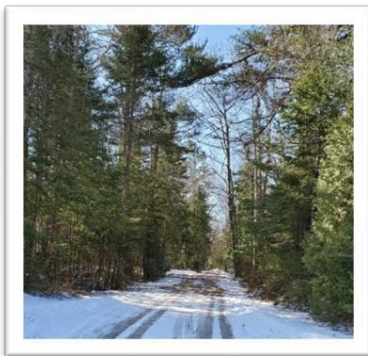
Accessibility: 1

Map: #1

Website: <https://www2.dnr.state.mi.us/parksandtrails/Details.aspx?id=694&type=SFCG>

[RETURN TO INVENTORY LISTING](#)

DeTour State Forest Campground offers fabulous beaches along Lake Huron, plus there are hiking, horseback riding, and ORV trails linked to the area. A quick six miles out of town on M-134 to this sweet spot. This peaceful campground is home to 21 sites for tent and small trailer use, three of which accommodate 40-ft vehicle/trailer. Amenities include campfire rings on each site, vault toilets and potable water from well-hand pump. Sites are available on a first-come, first-serve basis. Michigan Recreational Passport Plate/Sticker required. No reservations. Suggested improvements include discussion of partnership between DeTour Township and MDNR on park expansion on both sides of M134, RV sites, expanded immediacies, and additional parcels.



### 23. **DeTOUR PASSAGE BOAT LAUNCH (OLMSTAD BAY)**

Type: Special Use  
Size: Approximately 5.5 Acres  
Location: 45.978503, -83.908381  
Accessibility: 1  
Map: #2  
Website: <http://www.mcgi.state.mi.us/MRBIS/BASDetail.aspx?basid=A-17-004>  
and <http://www.detourvillage.org/olmstad-bay-boat-launch.html>

[RETURN TO INVENTORY LISTING](#)

This quiet put-in location is used by many locals for a day of fishing or shenanigans on their pleasure boats. The ramps are open to the public and provide an excellent spot to launch small crafts. Located on the south end of Malette Park, families can enjoy a day of boating, swimming, and picnic fun; all from one spot. Vault toilet and parking available near launch. Improvement ideas include collaboration between DeTour Village and MDNR to connect Malette Park and DeTour Passage Boat Launch with wooden path and bridge, kayak launch, and shared parking.



## 24. DETOUR VILLAGE BOAT LAUNCH (CUNNINGHAM STREET)

Type: Special Use

Size: .9 Acres

Location: 45.994013, -83.899703

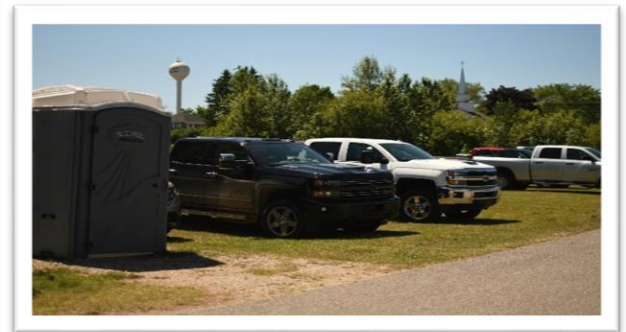
Accessibility: 4

Map: #2

Website: <http://www.mcgi.state.mi.us/MRBIS/BASDetail.aspx?basid=A-17-003>  
and <http://www.detourvillage.org/cunningham-st-boat-launch.html>

[RETURN TO INVENTORY LISTING](#)

Access to the beautiful St. Marys River, Lakes Superior and Huron, and beyond... right in the heart of the village. This public boat launch is run by the DNR, has two put-in ramps, ample free daily parking for your tow vehicle and trailer on site. Overnight parking is available nearby from various businesses. Located at the south end of DeTour Harbor, boaters have easy access to fuel at the marina before entering the St Marys. This is an awesome freighter viewing site. A portable public toilet is on site and modern public restrooms are one block south of boat launch. Suggested improvements include upgraded walkway along pier with seating for nautical traffic viewing and landscaping.



## 25. DeTOUR STATE HARBOR

Type: Special Use  
Size: 1.17 Acres  
Location: 45.998567, -83.900883  
Accessibility: 3  
Map: #2  
Website: <http://www.detourvillage.org/detour-public-marina.html>

[RETURN TO INVENTORY LISTING](#)

DeTour State Harbor, located in the town of DeTour Village, is the gateway to the gorgeous Canadian North Channel and spectacular Lake Superior. Transient and seasonal slips available. Amenities include: Diesel, Electricity, Gasoline, Laundry-Coin Operated, Pump-Out, Restrooms, Showers, Water, Picnic Area, Pavilion, Charcoal Grills. A walk to the end of the pier offers incredible freighter viewing. DeTour's Marina Park overlooks the harbor and hosts multiple outdoor concerts each summer. Owned and operated by MDNR.





## 26. CARIBOU LAKE BOAT LAUNCH

Type: Special Use  
Size: .37 Acres  
Location: 46.009546, -83.998136  
Accessibility: 1  
Map: #1  
Website: <http://www.mcgi.state.mi.us/MRBIS/BASDetail.aspx?basid=A-17-010>  
and <http://www.detourvillage.org/caribou-lake-boat-launch.html>

[RETURN TO INVENTORY LISTING](#)

Oh, what a beauty this inland lake is. You will love the fishing, and the peaceful quaintness of this 825-acre lake. The public launch, maintained by the DNR, is located five miles west of town, on North Caribou Lake Road. This site has 10 parking spaces available and a vault toilet. The ramp is a hard surface with sufficient depth to accommodate all trailerable watercraft.



# MICHIGAN DEPARTMENT OF TRANSPORTATION (MDOT)

## 27. ALBANY BAY TURNAROUND # 3

Type: Special Use  
Size: 15.74 Acres  
Location: 45.96969432, -84.0748593  
Accessibility: 1  
Map: #1  
Website: <http://www.detourvillage.org/albany-bay-turnout.html>

[RETURN TO INVENTORY LISTING](#)

Quietly tucked on a pull-off on M-134 just east of M-48, this secluded beach is a gem. Walk down the tiny trail to a beach that is well worth the walk. If you like quiet, this is for you. Albany Beach is nine miles from DeTour Village.

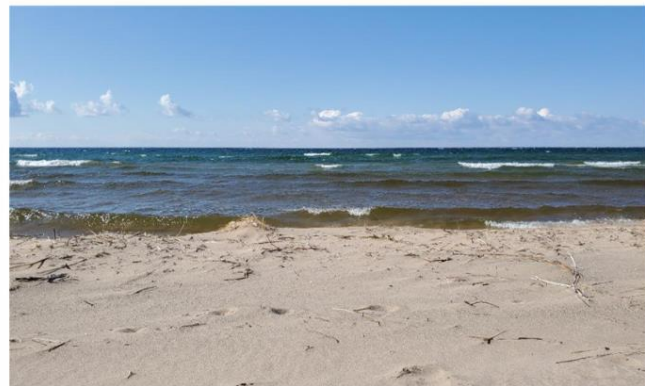
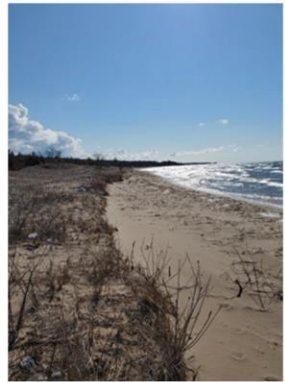


## 28. **SAND DUNE BEACH TURNAROUND #4**

Type: Special Use  
Size: 15.07 Acres  
Location: 45.967819, -84.059200  
Accessibility: 1  
Map: #1  
Website: <http://www.detourvillage.org/dunes-beach-turnout.html>

[RETURN TO INVENTORY LISTING](#)

Located eight miles out of town on M-134 ("The Scenic"), Sand Dune Beach offers long sandy beaches with Lake Huron lapping at your toes. Ample parking along M-134 makes gathering with friends easy. A long-standing local favorite. Explore avenues to maintain clean sandy beaches.





## 29. STATE ROADSIDE PARK

Type: Special Use

Size: Approximately .50 Acres of Shoreline

Location: 45.962411, -84.033815

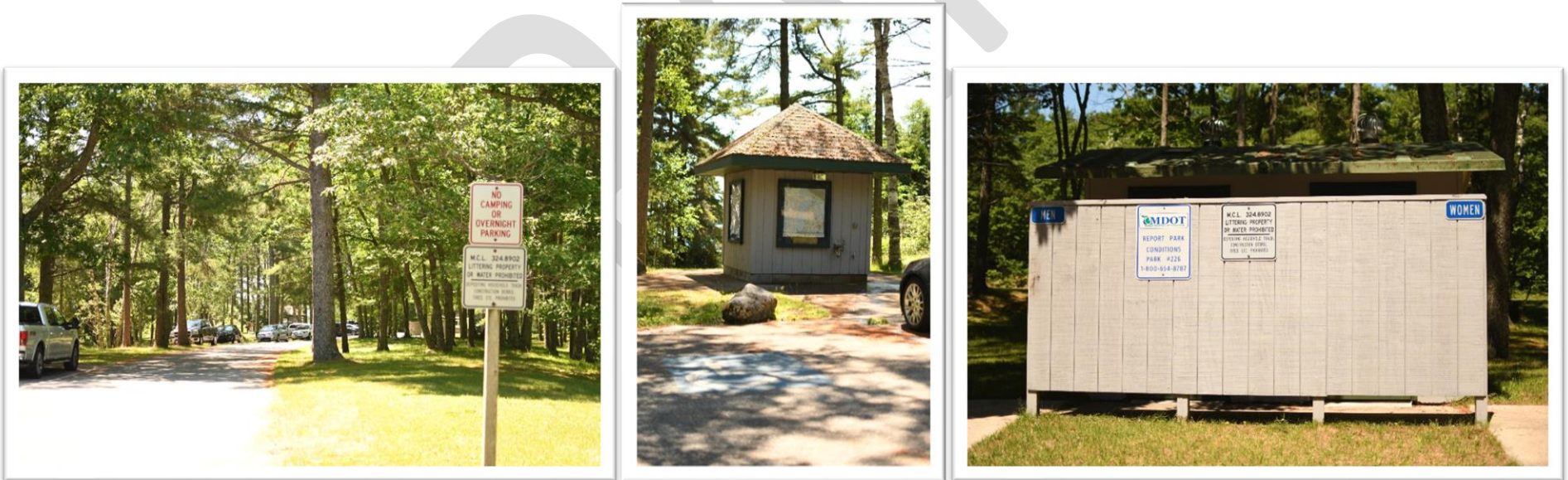
Accessibility: 2

Map: #1

Website: <http://www.detourvillage.org/state-road-side-park.html>

[RETURN TO INVENTORY LISTING](#)

Hidden on the back side of the State Rest Stop you will find a great little sunning and swimming spot. Plus, the Rest Stop park offers tables, grills, and rest rooms. With ample parking, this spot is a great family gathering area on a beautiful summer day. Located 7 ½ miles of out of town on M-134.



### 30. HOT DOG STAND BEACH TURNAROUND #

Type: Special Use

Size: 1.19 miles of shoreline

Location: 45.964706, -83.992415

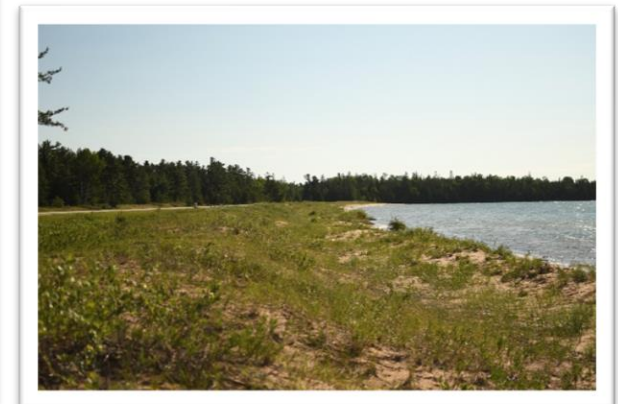
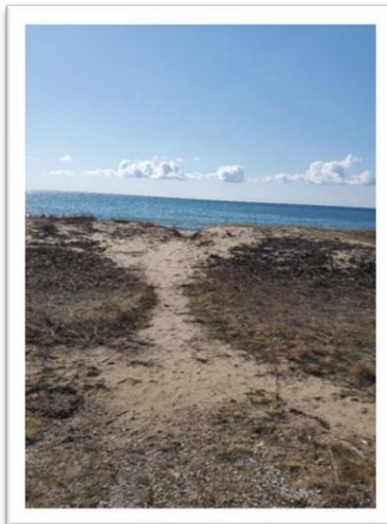
Accessibility: 1

Map: #1

Website: <http://www.detourvillage.org/hot-dog-stand-beach-turnout.html>

[RETURN TO INVENTORY LISTING](#)

If a local asks if you'd like to go to the Hot Dog Stand, bring a towel and your swimsuit, not your appetite. This beach area is fondly remembered as the "Hot Dog Stand", a business that provided food and refreshments to all the kids and families in town who gathered on the sandy shores of Lake Huron on many a warm summer day. The actual Hot Dog Stand is long gone, but the memories remain vivid. Hot Dog Stand Beach is five miles from town, south out M-134, and offers ample parking with a long rolling sand dune giving way to a beautiful sandy beach spanning roughly one quarter mile along Lake Huron. With its length, hiking the shoreline is amazing, and shallow waters near shore make gathering of families and friends exciting. Hot Dog Stand Beach turnout is home to the historical marker for DeTour Reef Lighthouse, which you can view in the distance. Explore avenues to maintain clean sandy beaches.

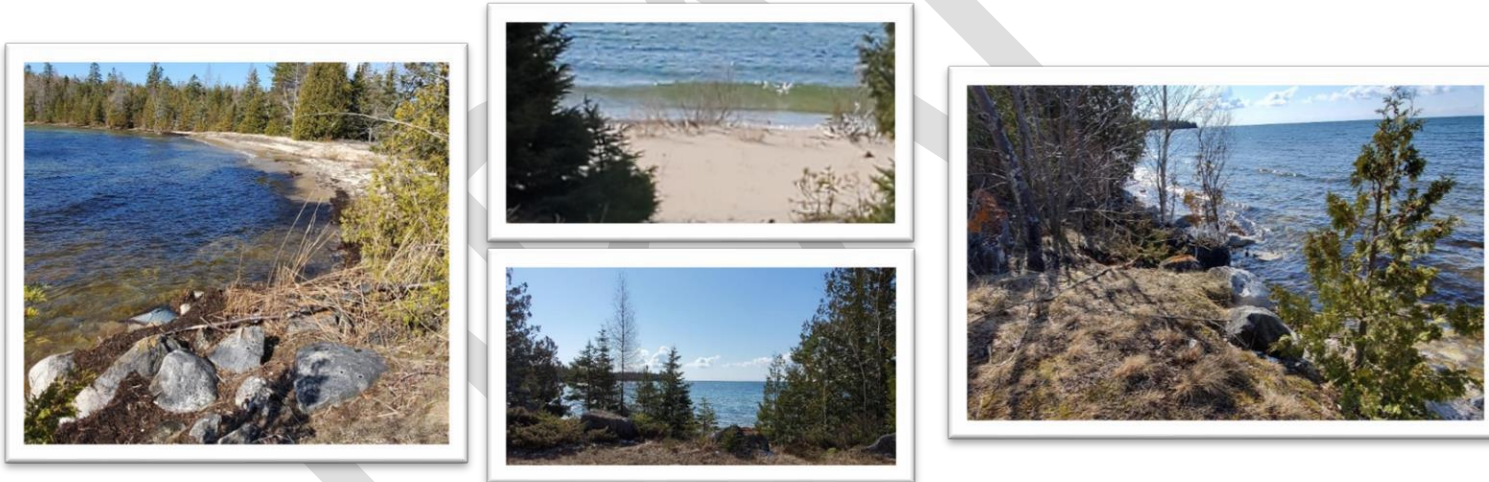


### 31. ST. VITAL BEACH TURNAROUND #

Type: Special Use  
Size: Approximately .50 Acres of Shoreline  
Location: 45.969987, -83.957681  
Accessibility: 1  
Map: #1  
Website: <http://www.detourvillage.org/st-vitals-bay-turnout.html>

[RETURN TO INVENTORY LISTING](#)

We cannot get enough of our beautiful shoreline. Stop, relax, and enjoy Lake Huron's beauty. Two- and one-half miles from the village along M-134, this turnout offers parking, both sandy and rocky beach areas and plenty of seclusion.



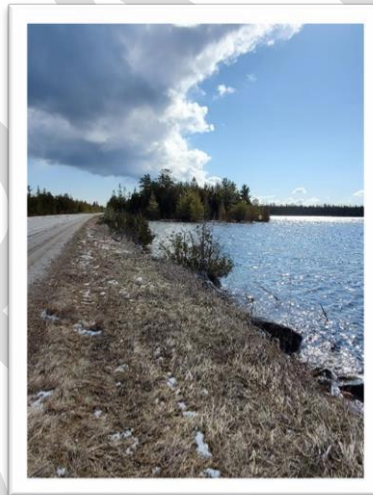


## 32. SEYMOUR BAY TURNOUT

Type: Special Use  
Size: Approximately .50 Acres of Shoreline  
Location: 45.975736, -83.925469  
Accessibility: 1  
Map: #1  
Website: <http://www.detourvillage.org/seymour-bay-turnout.html>

[RETURN TO INVENTORY LISTING](#)

Yet another quiet little spot to pull off M-134 and dip your toes in the water. It's rocky, yes, and it's quiet with the water lapping up to the road ... step behind a bank of trees and you've got the world to yourself. Plus, it's a good place to drop a line in. Located on Lake Huron in Seymour Bay two miles outside the village.



# LITTLE TRAVERSE NATURE CONSERVANCY (LTNC)

## 33. DeTOUR PENINSULA NATURE PRESERVE

Type: Natural Resource Area  
Size: 143.58 Acres  
Location: 45.970565, -83.914414  
Accessibility: 1  
Map: #1  
Website: <https://landtrust.org/detour-peninsula-nature-preserve/>

[RETURN TO INVENTORY LISTING](#)

Jutting down into Lake Huron, this preserve includes the rich diversity that typifies northern Lake Huron: sand and gravel beach, limestone cobble shore, boreal forest, rich conifer swamp, emerging marsh, and coastal fen. The land lies within a major migration corridor centered on the St. Mary's River. A two-track road, Point Road, runs through the preserve to private land on the tip of the peninsula and is open to foot traffic. A small parking area is available at the end of Point Road.



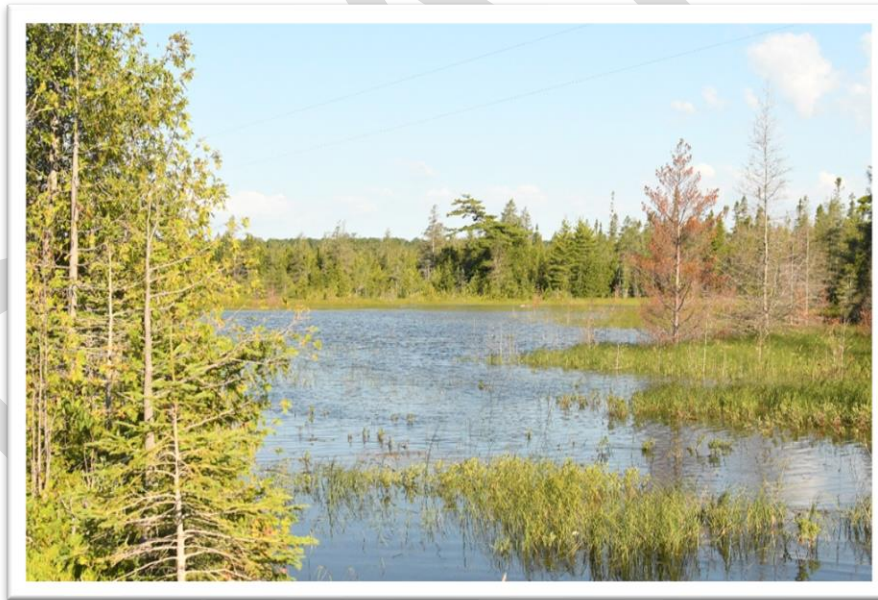


### 34. **SEYMOUR BAY PRESERVE**

Type: Natural Resource Area  
Size: 19.51 Acres  
Location: 45.975036, -83.931805  
Accessibility: 1  
Map: #1  
Website: <https://landtrust.org/>

[RETURN TO INVENTORY LISTING](#)

Great Lakes marsh that drains into Lake Huron. Twenty-seven acres of scenic wetland preserve owned by Little Traverse Conservancy. No developed parking or trails currently. Approximately one mile west of DeTour on M-134.



### 35. **ELLEN ELLIOT WEATHERBEE NATURE PRESERVE**

Type: Natural Resource Area  
Size: Add  
Location: Add  
Accessibility: 1  
Map: #1  
Website: <https://landtrust.org/>

[RETURN TO INVENTORY LISTING](#)

DeTour Township. Includes 200 feet along M-134, approximately 3.5 miles west of DeTour. Property is a coastal fen that is in an abandoned coastal embayment of Lake Huron.

### 36. **JAMES V. FOSTER / HARTLEY LAKE PRESERVE**

Type: Natural Resource Area  
Size: 124 Acres  
Location: 45.985468, -83.929600  
Accessibility: 1  
Map: #1  
Website: <https://landtrust.org/>

[RETURN TO INVENTORY LISTING](#)

Donated by Bradley Foster and Teresa Irish to Little Traverse Conservancy. 2,000 feet of Hartley Lake frontage with parking off South Caribou Lake Road. An addition of 40 acres was purchased in 2019.



## TRAILS & ROUTES

37. **GIWIDEONANING WATER TRAIL** - the DeTour Area segment of larger **North Lake Huron Water Trail** and **St. Marys River Island Explorer Water Trail** has been designated as Giwideonaning, the Ojibwe word for "Point which we go around in a canoe". Water trails are recreational routes on waterways with a network of public access points supported by broad-based community partnerships. Water trails provide both conservation and recreational opportunities. The presence of the St. Marys River and the Great Lake Huron are obvious water resources for the DeTour Area and the entire State. Sixteen public areas have been identified as access points along the Giwideonaning Water Trail.
38. **GREAT LAKES CIRCLE TOUR** – The Great Lakes Circle Tour is a designated, scenic road system connecting all the Great Lakes and the St. Lawrence River. The Circle Tour road route is over 6,500 miles and is marked by distinctive green and white signs usually along the closest major road or highway to the Great Lakes shorelines. The tour was established by the Great Lakes Commission in cooperation with its eight member states and the province of Ontario, promoting travel and tourism along the shores of "North America's Fresh Coast."
39. **NORTH HURON SCENIC PATHWAY** - During 2006, a group of stakeholders from Clark Township gathered to discuss the potential for developing a nonmotorized pathway between Cedarville and Hessel. From these discussions grew a much larger and collaborative effort, now known as the North Huron Scenic Pathway. The proposed pathway would run from downtown St. Ignace to Drummond Island, spanning over 70 miles. An engineering study was developed by Rowe Engineering with preferred and alternate routes. MDOT has improved Highway M-134 with wider shoulders from Mackinac Trail (CR H-63) to Hessel and from Cedarville to DeTour. The Les Cheneaux Bicycle Committee is still pursuing an off-road pathway between the 5-mile stretch between the communities of Cedarville and Hessel.
40. **M-134 SCENIC BYWAY** – This Michigan State Road begins 15 miles north of the Mackinac Bridge off I-75 in the Upper Peninsula of Michigan, and extends east approximately 50 miles, to the "four corners" of the ever popular Drummond Island. This 50 mile journey travels through four communities, (Hessel, Cedarville, DeTour Village, and Drummond Island), offers thousands of miles of off road trails, hundreds of acres of land to explore, a ferry boat ride, and dozens of cultural experiences, not to mention miles of shoreline along Lake Huron and the St Mary's River.
41. **CRANBERRY LAKE TRAIL** - This trail is located roughly 10 miles west of DeTour Village on the north side of M-134, just west of DeTour State Forest Campground. You can also enter the trail from South Caribou Lake Road, just west of Township Park on Caribou Lake. The trail network includes an 8-mile multi-use trail that travels through state forest lands and along scenic Cranberry Lake.
42. **ZIEGLER TRAIL** - This network of historic logging roads provides an interesting scenic link between M-134 to the south and M-48 to the north. The roads wind through Lake Superior State Forest and some private acreage, so please note the "no trespassing" signage when visiting this area. Low, Springer and Ziegler roads are rough dirt roads used by loggers but shared by recreational users. Enter roads North Caribou Lake Road at M-48.

43. **LOW SPRINGER TRAIL** - Low and Springer roads are rough dirt roads with many exposed rocks and ruts, for moderately challenging riding. Historic logging and navigation routes. The area is characterized by hardwoods, mixed conifer forest, mature aspen and maple stands, plus sandy rolling landscape. Low Road is approximately 12 miles west of DeTour on M-134. Low Road heads north and intersects Springer Road which goes all the way to Ziegler and M-48.

See the *DeTour Area: Recreation Inventory* map on the following page: see maps in Appendix A to reference land cover, land ownership, and elevation.

In addition to the assets above, hundreds of miles of ORV and snowmobile trails connect communities throughout the eastern upper peninsula region, and beyond, offering a multitude of activities and events.

## MAPS OF DETOUR AREA

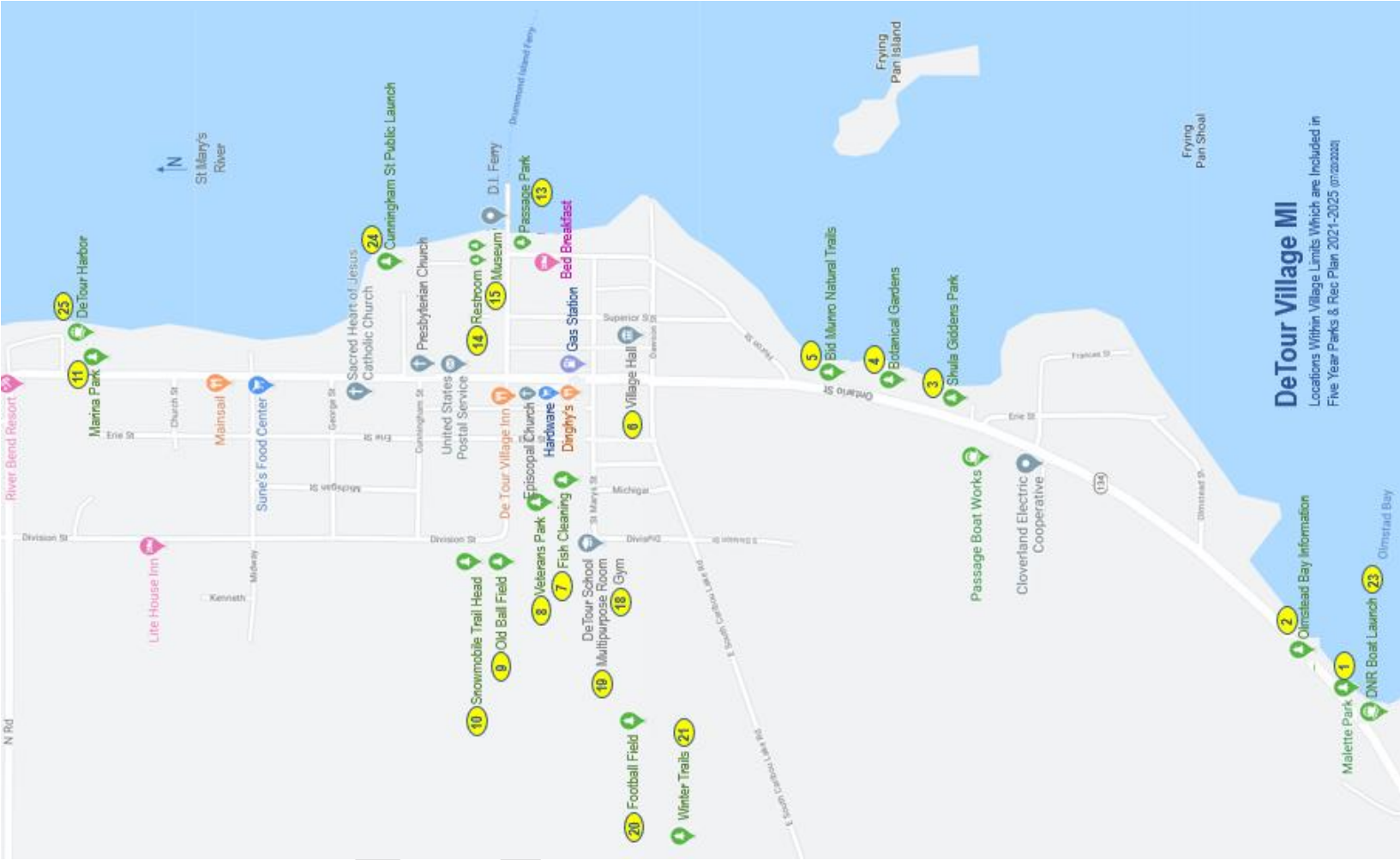
### SITE LOCATION MAP #1



MAP CREATED BY DeTOUR VILLAGE



SITE LOCATION MAP #2



MAP CREATED BY DeTOUR VILLAGE

LANDOWNERSHIP MAP



LAND COVER MAP

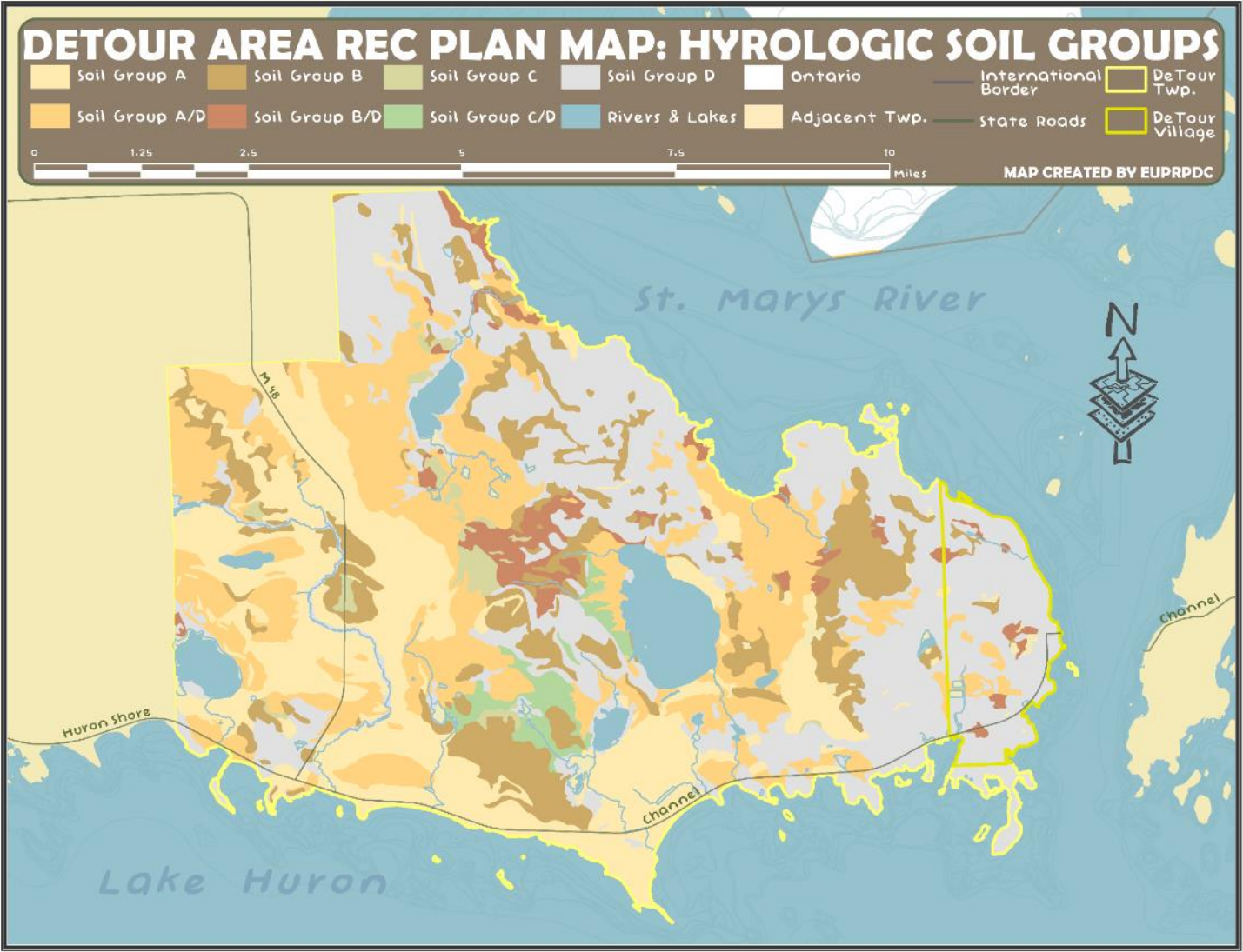




ELEVATION MAP



HYDROLOGIC MAP



## DESCRIPTION OF PLANNING & PUBLIC INPUT

The development of this community recreation plan involved interaction and input from citizens and community groups. The DeTour Area Parks & Recreation committee was the lead entity in overseeing the development of the DeTour Area Recreation Plan. The DeTour Township Board and DeTour Village Council appointed members of the Parks & Recreation committee to carry out the necessary actions required when putting together a recreation plan. Eastern U.P. Regional Planning & Development Commission was contracted to work with the Parks & Recreation committee, write the plan, co-participate in public input session and submit approved plan to MDNR. Throughout several meetings, the committee compiled and reviewed plan materials and survey results. The Parks & Recreation committee and Village/Township Council meetings were open to the public with time allocated for comments.

A timeline for the development of the recreation plan update is as follows:

### SCHEDULE

March 2020	DeTour Village and DeTour Township contracts with Eastern U.P. Regional Planning & Development Commission (EUPRP&DC) to update their recreation plan.
April - May 2020	EUPRP&DC staff reviewed the expiring plan and made corrections with available public information.
June 2020	A survey was used to gain public input and feedback about recreational opportunities in the DeTour Area. The survey was made available on the Village of DeTour's website. Notice was given to the public through signage at several area businesses and Village Hall. Online notification was given on DeTour Facebook page with link to online survey. Notice given on community LED sign in center of town. Hard copies of the survey were made available at three area businesses and Village Hall.
July 2020	EUPRP&DC and the DeTour Area Recreation Committee reviewed and updated the plan's chapters to reflect the current state of recreation in the village.
August 2020	The draft plan is posted for a 30-day public review period at the DeTour Area website and EUPRP&DC's website. A public notice for the plan availability and public meeting was published in the XXXX.
September 2020	A public meeting was held. The comments and suggestions were incorporated into the final plan. The Parks and Recreation Committee adopted the recreation plan with recommended changes and recommended the DeTour Village Council and DeTour Township Board adopt the recreation plan. The DeTour Village Council adopted the recreation plan. The DeTour Township Board adopted the recreation plan.



## **PUBLIC INPUT**

Citizen opinion on parks and recreation priorities is vital to the development of a recreation plan. An online survey was provided to acquire citizen input about recreational facilities. EUPRP&DC provided a simple questionnaire for review and edit by the DeTour Parks and Recreation Committee. The DeTour Parks and Recreation Committee offered hard copies available at the Village office and three local businesses, as well as an on-line version. The survey was publicized through social media and announced on the DeTour Village website and digital sign.

This poster was hung in several businesses in town.

In addition, four locations had surveys available to the public to pick up, complete and return.

**5** MINUTES OF YOUR TIME **5** Year Plan  
Helps us Develop a

**DeTOUR VILLAGE MI**

**DeTOUR PARKS and RECREATION 5 YEAR PLAN for 2021-2025**

*For those who live, work, relax or go to school in the area ...*

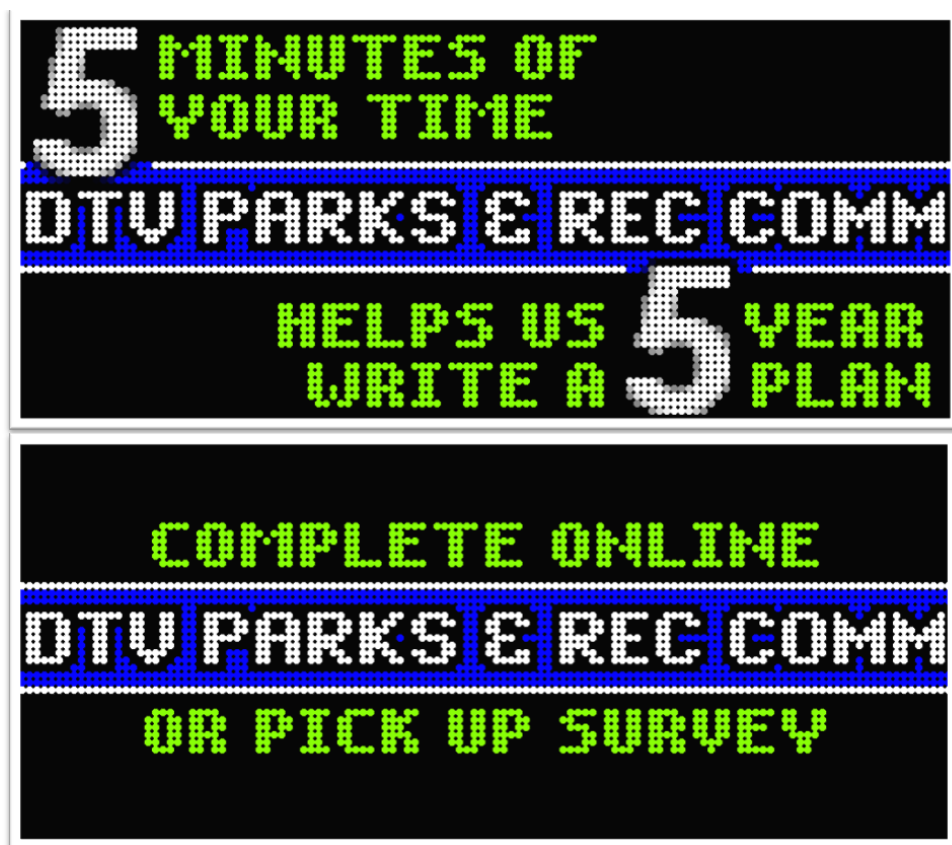
DeTour Parks & Recreation Committee is Updating our 5-Year Plan  
and We Would Like Your Input To Help Set Our Direction

**TAKE SURVEY ONLINE: [www.surveymonkey.com/r/DeTourRecPlan](http://www.surveymonkey.com/r/DeTourRecPlan)**

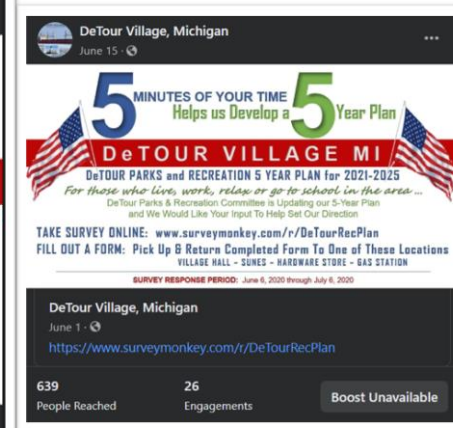
**FILL OUT A FORM: Pick Up & Return Completed Form To One of These Locations**  
VILLAGE HALL - SUNES - HARDWARE STORE - GAS STATION

**SURVEY RESPONSE PERIOD: June 6, 2020 through July 6, 2020**

This two-page ad ran on our community LED sign during the month of June.



This poster was published on DeTour Facebook page June 1<sup>st</sup> and reshared again on June 15<sup>th</sup>.



After all public input was gathered and recorded, DeTour Parks and Recreation Committee met to prioritize projects for the Action Plan and to develop a capital improvements plan.

During the month of August residents were invited to view the survey results and draft of the 5 year plan, followed by a public Input Meeting on September 3, 2020 at 6pm.

This ad ran on our community LED sign August 1, 2020 through August 30, 2020.







This ad ran in St Ignace  
News July 29, 2020

**DeTour Area 2021-2025 Recreation Plan is out for review**

The document will be able to be reviewed from August 1, through August 31, 2020. Printed plans will be available at the Village Office, <http://www.detroitvillage.org>/or at <http://www.eup-planning.org>/

Please submit comments in one of the following ways:

- At the Village office please submit comments in writing
- By email to [ellen@eup-planning.org](mailto:ellen@eup-planning.org), or
- By mail to: ATTN DeTour Area Recreation Plan  
1118 E. Easterday Ave., Sault Ste. Marie, 49783.

A public meeting to discuss the Recreation Plan is scheduled for Thursday, September 3rd, 6:00 p.m. at the DeTour Village Community Center, 260 Superior Street, DeTour Village MI

Is your municipal Michigan DNR Recreation Plan up to date? The plans develop a strategy for improving recreation opportunities and help ensure eligibility for DNR grant opportunities. To learn more and to find your local government's plan- or how to learn how to develop a plan, please contact [ellen@eup-planning.org](mailto:ellen@eup-planning.org)

Ad paid for by the Eastern Upper Peninsula Regional Planning & Development Commission.



The survey results can be found at <http://www.detroitvillage.org/parks---recreation-committee.html>.

## GOALS & OBJECTIVES

The purpose of this 5-year plan for the DeTour Area is to expand and improve the recreational opportunities for residents and visitors. To make this a reality, this plan will work to achieve seven main goals. Each goal will have objectives to guide progress through various initiatives and projects. The next section, Action Program, will delineate when, where, and how certain objectives will be met by the DeTour Area Recreation Committee.

The rationale for these goals and objectives are rooted in the insights gleaned from the recreation questionnaire as well as from discussions with the DeTour Township Board of Trustees and DeTour Village Council members.

According to the survey results, walking, motorized boating, freighter viewing, swimming, paddling, ATV/ORVing, hunting, and gardening were the most popular activities. Respondents indicated their highest priorities for improvements are for the Veteran's Memorial Park, Marina Park (Water Plant), and Shula Giddens Park. Recreational programming and promotion were included as higher priority for funding allocations. Motorized trails and water trail improvements were also noted as a priority.

**GOAL #1:** IMPROVE THE QUALITY OF LIFE FOR RESIDENTS AND ATTRACT VISITORS TO THE DETOUR AREA BY MAINTAINING, IMPROVING AND EXPANDING RECREATION WITHIN THE VILLAGE AND SURROUNDING AREAS BY WORKING COOPERATIVELY WITH LOCAL AND STATE GOVERNMENTAL AGENCIES, COMMUNITY SERVICE AGENCIES, LOCAL BUSINESSES AND COMMUNITY VOLUNTEERS.

*RATIONALE: THREE OF THE TOP FIVE RANKED PRIORITIES FROM THE SURVEY WERE DIRECTLY RELATED TO PARK IMPROVEMENTS.*

### OBJECTIVES:

- 1.1: Improve the accessibility and usage of the recreational resources in the DeTour Area
- 1.2: Identify resources needed to improve, expand, & increase public awareness about the area's recreational facilities & activities.
- 1.3: Encourage residents & visitors to use existing parks & trails through improvements that increase the availability of recreational amenities.
- 1.4: Establish directional signage in outlying areas to direct visitors to area recreational opportunities.
- 1.5: Develop a recreational brochure and map for the DeTour Area.
- 1.6: Continue to maintain a presence in regional recreational initiatives and meetings.



## **GOAL #2: BUILD VETERANS PARKS BASED ON PUBLIC APPROVED DESIGN**

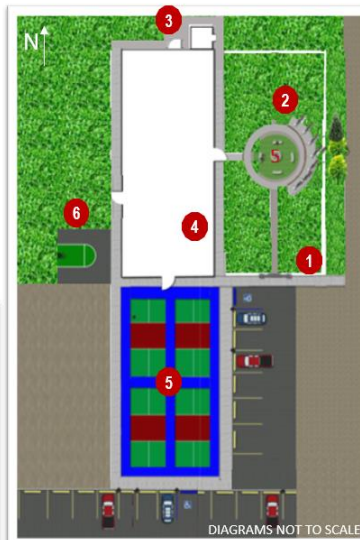
*RATIONALE: VETERANS PARK WAS LISTED AS A TOP PRIORITY IN PUBLIC SURVEY. OFFERING A TRIBUTE TO THE MEN AND WOMEN WHO SERVED OUR COUNTRY DRAWS VISITORS. PREVIOUS PUBLIC HEARINGS PROVIDED INPUT TO THE DESIRES AND DESIGN OF THIS PARK.*


### **OBJECTIVES:**

- 2.1: Create substantial park entrance
- 2.2: Add Veterans Circle, holding flags for branches of service, benches, walk-ways and fire pit
- 2.3: Add restroom facility
- 2.4: Add Veterans Tribute wall
- 2.5: Add four pickleball courts
- 2.6: Add half basketball court
- 2.7: Add walkways connecting all new amenities to existing pavilion that sits as hub to Veterans Park.

### **DeTour Village Veterans Park**

#### **AWARENESS & FUNDRAISING CAMPAIGN - FEBRUARY 2020**



- 1 PARK ENTRANCE**
  - Stacked Brick Entrance "DeTour Village Veterans Park"
  - Black Wrought Iron Fence Outlining Veterans Area
  - East Side of Existing Pavilion
- 2 VETERANS CIRCLE**
  - Stacked Brick Circular Flag Wall
  - American Flag & Flag from Each Branch of Service
  - Seating Facing Flags
- 3 RESTROOM**
  - One Stall Unisex Restroom
  - North End of Existing Pavilion
- 4 VETERANS TRIBUTE**
  - List of Each Citizen Who Served, Dates, Branch
  - South East Interior Wall of Pavilion
- 5 PICKLEBALL COURTS**
  - Four Pickleball Courts
  - Black Coated Chain Link Fencing
  - Benches Near Courts
  - South of Existing Pavilion
  - Paddles & Balls Available to Borrow at Library
- 6 BASKETBALL COURT**
  - One Half Basketball Court
  - Benches Near Courts
  - West of Existing Pavilion
  - Balls Available to Borrow at Library
- W CONNECTING WALKWAYS**
  - Five-Foot-Wide Walkway
  - Connecting All Amenities
  - Shown on Diagram as: 

#### **SEEKING SUPPORT & DONATIONS FOR THIS \$260,000 (initial estimate) PROJECT**

through Grants, Commercial and Private Donations, and In-Kind Contributions.

Call Matt Schultz 906-440-4219 or Bill Murray 517-285-7315

with Questions or Comments, and to Discuss Contributions of Any Kind

Accepting Cash, Check, Credit Card, and In-Kind Services.

DeTour Village Veterans Park Project – PO Box 397 – DeTour Village MI

**GOAL #3:** ENHANCE MARINA PARK BY CREATING PERMANENT PERFORMANCE VENUE

*RATIONALE: LISTED AS A TOP PRIORITY IN PUBLIC SURVEY, MARINA PARK IS HOST TO SUMMER CONCERT SERIES AND VARIOUS FESTIVALS. CREATING A MORE ATTRACTIVE, PARCTICAL GATHERING SPOT INVITES RESIDENTS AND TOURISTS, AND AESTHETICALLY BLENDS VILLAGE SITE WITH NEIGHBORING MDNR HARBOR, WHILE REDUCING MAINTENANCE AND SET UP COSTS*

**OBJECTIVES:**

- 3.1: Create permanent performance stage with roof structure
- 3.2: Create covered vendor or visitor section
- 3.3: Add water and electric access at various outdoor spots
- 3.4: Paint water building
- 3.5: Add landscaping
- 3.6: Offer permanent protective landscaping to neighboring MDNR to protect and partial hide gas filling area
- 3.7: Add flagpole and village signage

**GOAL #4:** EXPAND MALETTE PARK BY OFFERING LARGER BEACH AREA AND ADDED RECREATIONAL OPPORTUNITIES

*RATIONALE: LISTED AS A TOP PRIORITY IN PUBLIC SURVEY, MALETTE PARK OFFERS THE ONLY BEACH IN TOWN, IS WITHIN WALKING AND BIKING DISTANCE OF BUSINESS DISTRICT. INITIAL IMPROVEMENTS IN 2020 INCREASED PARK USAGE OVER 1000%*

**OBJECTIVES:**

- 4.1: Expand beach by balancing sun and shade sections of park
- 4.2: Partner with MDNR to connect DeTour Passage Boat Launch with Malette Park, sharing parking, launch, and restrooms
- 4.3: Blend Malette Park with Olmsted Bay Information Turnout
- 4.4: Upgrade parking
- 4.5: Add kayak launch area
- 4.6: Add landscaping
- 4.7: Replace tables and grills with permanent maintenance free equipment installed in other owned parks
- 4.8: Add flagpole and village signage

**GOAL #5:** OFFER CAMPING SITES FOR A WIDE VARIETY OF SIZES AND TYPES OF TRAVELERS

*RATIONALE: WITH DIVERSE RECREATIONAL ACTIVITIES OFFERED IN DETOUR AREA, COMES TRAVELERS WITH DIVERSE GEAR, ATV/ORV AND HORSE TRAILERS, CAMPERS, MOTOR HOMES, TENTS. WE LACK ABILITY TO OFFER A VARIETY OF ACCOMMODATIONS.*

**OBJECTIVES:**

- 5.1: Evaluate potential opportunities for land usage, easements, partnership and/or acquisition
- 5.2: Seek opportunities with MDNR for expansion of DeTour State Campground to offer more and increased sizes of camp sites, offer electrical hookup, and other upgraded amenities, and larger parking areas. Potential expansion to both sides of M134
- 5.3: Explore partnership between DeTour Township and MDNR on the growth and maintenance of State Campground

**GOAL #6:** EXPAND MOTORIZED AND NON-MOTORIZED TRAIL SYSTEMS AND PARK AMENITIES.

*RATIONALE: THE CURRENT TRAIL SYSTEMS ARE WELL-USED, AND ADDITIONAL AMENITIES WILL INCREASE THE PUBLIC'S ENJOYMENT. ADDITIONAL MOTORIZED ROUTES WILL INCREASE OPPORTUNITY FOR RECREATION AND CONNECT THE TOWNSHIP TO TRAIL SYSTEMS THAT CURRENTLY END AT THE DETOUR FERRY DOCK, WHILE EXPANDING LOCAL TRAILS PROVIDES OPPORTUNITY TO CONNECT NEIGHBORING PARKS AND AMENITIES. INSTALLING IMPROVED AMENITIES AT THE PARKS WHICH SERVE AS ANCHORS FOR THE TRAIL SYSTEMS AND SUPPORT RESPONSIBLE TRAIL USE.*

**OBJECTIVES:**

- 6.1: Provide recreational amenities for the aging population to increase the desirability of the community for retirees.
- 6.2: Seek opportunities for collaborations with other local, state, public and private organizations, and neighboring communities in the development, maintenance and expansion of land and water trails.
- 6.3: Create walking trails connecting neighboring parks, while incorporating health stations & frisbee golf course
- 6.4: Add wayfinding signage promoting local business district and various recreational opportunities
- 6.5: Evaluate potential opportunities for land usage, easements, partnership and/or acquisition

**GOAL #7:** Capitalize on and Further Develop DeTour Area's Recreation-Based Sense of Place.

*RATIONAL: RECREATION MAKES DETOUR A DESTINATION FOR BOTH RESIDENTS AND VISITORS. RECREATION-BASED PLACE MAKING EFFORTS WILL MEET PUBLIC EXPECTATIONS AND SUPPORT AN ENHANCED QUALITY OF LIFE.*

**OBJECTIVES:**

- 7.1: Assess and improve existing facilities with ADA accessibility and amenities.

- 7.2: Support and create a variety of sustainable recreational programming opportunities.
- 7.3: Explore & promote water-based activities for paddlers, fishermen, divers and swimmers
- 7.4: Provide volunteer opportunities and encourage community involvement with maintenance, work bees, events, & festivals and fund raising.
- 7.5: Create
- 7.6: Evaluate potential opportunities for land usage, partnership and/or acquisition

DRAFT

# ACTION PROGRAM

The action plan for this five-year plan will be dictated by the monies available through grants, fundraising, donations, and general township and village funds. These projects can be realized through the cooperation, assistance, and expertise of county, state and federal governments. This recreation plan may be amended at any time during its five years to change priority or to add or change goals and objectives with public opinion and input. **All development projects will be held to universal compliance and American Disability Act standards.**

## Funding Sources:

- DeTour Township Funds
- Village of DeTour Funds
- Local Funds (local service organizations and businesses, donations, in-kind work, volunteers and fundraising)
- Sault Ste. Marie Tribe of Chippewa Indians: 2 percent funds
- MDNR: Michigan Natural Resources Trust Fund (MNRTF)—minimum 25 percent match
- MDNR: Land & Water Conservation Fund (LWCF)—minimum 50 percent match
- MDNR: Recreation Passport (RP)—minimum 25 percent match
- MDEQ: Coastal Zone Management (CZM)—minimum 50 percent match
- MDOT: Transportation Alternatives Program
- MCACA: Capital Improvement; Project Support Mini-grant
- DNR Waterways



2021		SUGGESTED PROJECT	ESTIMATED COST	GRANTS	LOCAL FUNDS	DONATIONS	IN-KIND	VOLUNTEERS
Malette Park	1	Explore Partnership with MDNR to Connect Malette Park & DeTour Passage Boat Launch	TBD	-	-	-	-	-
Malette Park	1	Improve beach & swimming area, add volleyball court area	\$ -	-	L	D	I	V
Malette Park	1	Table and Grill Replacement Program	\$ 3,000	-	L	-	-	-
Malette Park	1	Access Site to Giwideonaning Water Trail	\$ -	-	L	-	-	V
Olmstad Bay Turnout	2	Pathway to Malette Park	\$ -	-	-	D	I	V
Shula Giddens Park	3	Write Grant for Fishing Pier	TBD	-	-	-	-	V
Botanical Gardens	4	Shed for Soil, Mulch, Debris & Shed for Port-A-John	\$ -	-	-	D	I	V
Bid Munro Trails	5	Expand Trails, Add Foot Bridge(s), Add Birdhouses, Add Plantings	\$ -	-	-	D	I	V
Shula-Botanical-Bid Munro	-	Establish Snowshoe Loop	\$ -	-	-	-	I	V
Fish Cleaning	7	Add Catch of Day Photo Board	\$ 3,000	G	L	-	-	V
Fish Cleaning	7	Painting and Landscaping	\$ 1,500	-	L	-	-	V
Veterans Park	8	Implement Park Improvements Outlined in Project Plan	\$ 260,000	G	L	D	I	V
Old Ball Field	9	Remove Old Back Stop	\$ -	-	L	-	-	V
Snowmobile Trailhead	10	Add Wayfind Signage	\$ 1,000	-	L	D	-	V
Marina Park	11	Create Permanent Performing Area Outlined in Project Plan	\$ 25,000	-	L	D	I	V
South Caribou Beach Park	12	Enhance Beach Area, Add Table, Add Appropriate Guest Signage	\$ 2,000	-	L	D	I	V
Passage Park	14	Add Landscaping to Newly Created Park	\$ 1,500	-	L	D	I	V
Snow Trails	21	Upgrade Wayfinding Signage	\$ 500	-	L	-	-	-
Snow Trails	21	Install Storage Building	\$ -	-	-	-	-	V
State Camp Ground	22	Begin Discussions With MDNR on Park Expansion & Partnership with DeTour Township	\$ -	-	-	-	-	V
Village & Township	-	Evaluate opportunities for land usage, easements, partnership and/or acquisition	TBD	-	-	-	-	V
Village & Township Parks	-	Add Cohesive Park Name Signage Throughout Village and Township	\$ 15,000	G	L	-	-	V

2022		SUGGESTED PROJECT	ESTIMATED COST	GRANTS	LOCAL FUNDS	DONATIONS	IN-KIND	VOLUNTEERS
Malette Park	1	Village Signage	\$ 5,000	G	L	-	-	-
Malette Park	1	Table and Grill Replacement Program	\$ 3,000		L	-	-	-
Shula Giddens Park	3	Install Fishing Pier	\$ 30,000	G	L	-	-	V
Botanical Gardens	4	Offer Events; Sharing Library with Gardening Books	\$ -	-	-	-	-	V
Bid Munro Trails	5	Add Benches, Add Plantings	\$ -	-	-	D	I	V
Veterans Park	8	Add Veterans Tribute Wall	\$ 5,000	-	L	D	I	V
Veterans Park	8	Write Grant to Add Retractable Doors to Pavilion	\$ -	-	-	-	-	V
Old Ball Field	9	Begin Trail Development	\$ -	-	-	-	-	-
Old Ball Field	9	Planning & Grant Writing for Disc Golf	\$ -	-	-	-	-	V
Snowmobile Trailhead	10	Upgrade Parking	\$ 5,000	-	L	-	I	V
South Caribou Beach Park	12	Upgrade Grill Area	\$ 2,000	-	L	D	I	V
State Camp Ground	22	Discussions With MDNR on partnership with DeTour Township and potential park expansion, such as Larger RV Spots, Expanded Parking; Utilities, West Side of M134 Expansion, Other	\$ -	-	-	-	-	V
Village & Township	-	Explore Organized Recreational Opportunities	TBD	-	-	-	-	V
Village & Township	-	Evaluate and alignment Village & Township budgets for increased park maintenance	TBD	-	-	-	-	V
Village & Township Parks	-	Expand Trail System Between Parks and Local Businesses	TBD	G	L	D	I	V
Village & Township Parks	-	Park Name Signage	\$ 15,000	G	L	-	-	V
Village & Township	-	Implement Cohesive Advertising Plan	TBD	G	L	-	-	V
Village & Township	-	Evaluate opportunities for land usage, easements, partnership and/or acquisition	TBD	-	-	-	-	V

2023		SUGGESTED PROJECT	ESTIMATED COST	GRANTS	LOCAL FUNDS	DONATIONS	IN-KIND	VOLUNTEERS
Malette Park	1	Connect Malette Park & DeTour Passage Boat Launch	Above	G	L	D	I	V
Malette Park	1	Table and Grill Replacement Program	\$ 3,000	-	L	-	-	-
Bid Munro Trails	5	Plant Tours	\$ -	-	-	-	-	V
Veterans Park	8	Add Retractable Doors to Pavilion	\$ 30,000	G	L	-	-	V
Old Ball Field	9	Install Disc Golf Course	\$ 10,000	-	-	-	-	V
Old Ball Field	9	Planning & Grant Writing for Fitness Trail	\$ -	-	-	-	-	V
Snowmobile Trailhead	10	Explore Summer Use of Existing Trails	\$ -	-	-	-	-	V
State Camp Ground	22	Implement Expansion of Park Based on Partnership Between DeTour Township & MDNR Larger RV Spots, Expanded Parking; Utilities, West Side of M134 Expansion, Other	TBD	-	-	-	-	V
Village & Township Parks	-	Expand Trail System Between Parks and Local Businesses	TBD	G	L	D	I	V
Village & Township	-	Evaluate opportunities for land usage, easements, partnership and/or acquisition	TBD	-	-	-	-	V

2024		SUGGESTED PROJECT	ESTIMATED COST	GRANTS	LOCAL FUNDS	DONATIONS	IN-KIND	VOLUNTEERS
Malette Park	1	Table and Grill Replacement Program	\$ 3,000	-	L	-	-	-
Old Ball Field	9	Install Fitness Trail	\$ 10,000	-	-	-	-	V
Old Ball Field	9	Install Dog Walk Area	TBD	-	L	D	I	V
State Camp Ground	22	Implement Expansion of Park Based on Partnership Between DeTour Township & MDNR Larger RV Spots, Expanded Parking; Utilities, West Side of M134 Expansion, Other	TBD	-	-	-	-	V
Village & Township Parks	-	Expand Trail System Between Parks and Local Businesses	TBD	G	L	D	I	V
Village & Township	-	Evaluate opportunities for land usage, easements, partnership and/or acquisition	TBD	-	-	-	-	V

2025		SUGGESTED PROJECT	ESTIMATED COST	GRANTS	LOCAL FUNDS	DONATIONS	IN-KIND	VOLUNTEERS
Malette Park	1	Table and Grill Replacement Program	\$ 3,000	-	L	-	-	-
State Camp Ground	22	Implement Expansion of Park Based on Partnership Between DeTour Township & MDNR Larger RV Spots, Expanded Parking; Utilities, West Side of M134 Expansion, Other	TBD	-	-	-	-	V
Village & Township Parks	-	Expand Trail System Between Parks and Local Businesses	TBD	G	L	D	I	V
Village & Township	-	Evaluate opportunities for land usage, easements, partnership and/or acquisition	TBD	-	-	-	-	V

## PUBLIC MEETING AND ADOPTION MEETING MINUTES

MINUTES FROM PUBLIC MEETING AND COPY OF ADOPTION MEETING MINUTES

COPY OF LETTER TO REGIONAL PLANNING AGENCY

POST-COMPLETION SELF-CERTIFICATION REPORTS

Insert PCSC reports and photos.