

# ***Lloyd and Meredith***



***[www.lloydandmeredith.com](http://www.lloydandmeredith.com)***



**Your Sprayer  
Headquarters  
*2021***



202 Chestnut St.  
Atlantic, IA 50022  
***712-243-5520***



# Lloyd and Meredith, Inc.

202 Chestnut Street • Atlantic, Iowa 50022

712-243-5520

Welcome to Lloyd and Meredith's 2021 Sprayer Catalog. Lloyd and Meredith is located in Atlantic, Iowa, where the business was founded 139 years ago. Lloyd and Meredith is a small company offering personalized, prompt service. We strive to ship orders same day.

## Table of Contents

ACE Pump Parts .....	8, 9
ATV Sprayers .....	2
Boom Wheel .....	24
Calibration Pitcher .....	24
Centrifugal Pumps	
ACE • PTO Driven .....	6
ACE Hydraulic/Hypro ..	7
Delavan Roller Pump .....	10
Fittings .....	15, 16, 18
Foam Markers .....	4
Gauges .....	13
Gloves .....	12
Hand Guns .....	22
Hose and Clamps .....	17
Inductors .....	24
Venturi Kit .....	24
Nozzle Bodies .....	18-19
Nozzles .....	21
Quick Couplers .....	13
Spot Sprayers .....	3
Spray Tips .....	21
Sprayer Controls .....	11
Strainers .....	14
12-Volt Pumps .....	5
Tanks .....	23
Thomas Compressors .....	5
Thread Sealants .....	23
Transfer Pumps .....	5
Utility Sprayer .....	1
Valves	
Bolted Ball .....	14
Electric Ball .....	10, 12
Solenoid .....	11

**To Order:** Call 712-243-5520 or fax your order to 712-243-4996. Lloyd and Meredith customer service hours are 8:00 a.m. to 5:00 p.m. C.S.T. Monday through Friday.

**Prices:** Prices listed in this catalog are Lloyd and Meredith selling prices. Prices are subject to change without notice.

**Payment:** Methods of payment are-- Check, Master Card, VISA, Discover, or C.O.D. There is a \$9.00 charge on C.O.D. shipments.

**Freight Damage:** All damaged freight must be reported at the time of delivery to the carrier.

**Returns:** No merchandise is to be returned to Lloyd and Meredith for credit, unless authorization is first given by Lloyd and Meredith.

**Warranty:** Defective merchandise and warranty items will be handled in accordance with the manufacturer's warranty program.

Non-warrantable merchandise will be handled at customer's discretion. All freight charges incurred are customer's responsibility.

**Catalog Errors and Changes:** Product specifications and pricing presented in this catalog are believed to be accurate at the time of publication. Lloyd and Meredith does, however, reserve the right to override information deemed to be in error.

Find us on the web!

[www.lloydandmeredith.com](http://www.lloydandmeredith.com)

# *Utility Sprayer*



- 40- or 60-gallon Tank
- 5.3 gpm 12-volt pump
- Spot Spray Gun with Adjustable Tip
- Boomless Nozzle Kit with 22' Spray Width

**\$585<sup>00</sup>**

60-gallon Sprayer w/ 22' Boomless Kit

---

Sprayer less the  
22' Boomless Kit

40-gallon ..\$440<sup>00</sup>

60-gallon \$455<sup>00</sup>



« «



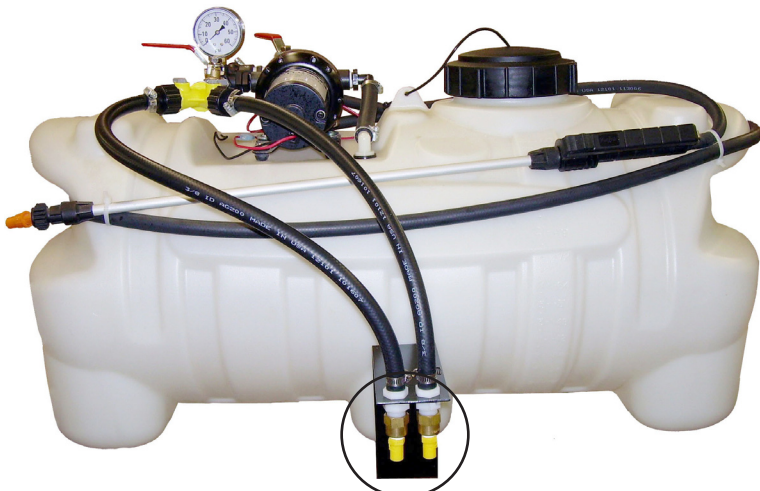


# ATV Sprayers

- 25-gallon with 150" boom
- Tank with drain
- 3.5 gpm, 12 Volt Pump
- Pressure Gauge
- Bypass Valve for pressure control
- TeeJet Handgun with 10' of 3/8" hose
- 150" Coverage Folding Boom



**\$545**

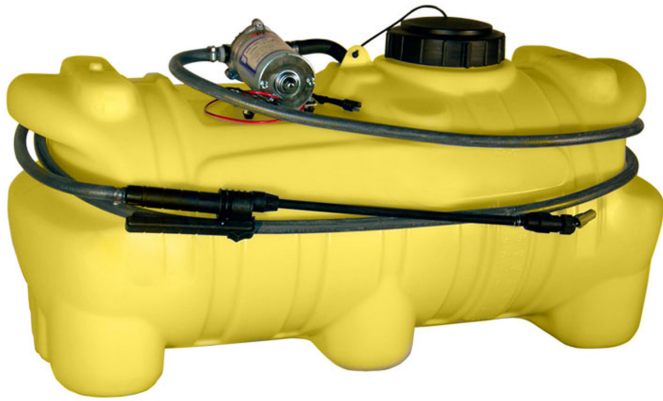


**\$525**

- 25-gallon with 22' coverage Boomless Tips
- Tank with drain
- 5.3 gpm, 12 Volt Pump
- Pressure Gauge
- Bypass Valve for pressure control
- TeeJet Handgun with 10' of 3/8" hose
- Two-directional TeeJet tips for 22' coverage

Shut off one tip and spray 11' one direction for fence rows and roadside applications.





# SPOT SPRAYERS

15 gallon w/ 1.0 economy pump.....	\$89 <sup>00</sup>	
15 gallon w/ 1.0 gpm pump .....	\$125 <sup>00</sup>	
15 gallon w/ 1.8 gpm pump .....	\$140 <sup>00</sup>	w/ 100# pressure ... \$175 <sup>00</sup>
25 gallon w/ 1.0 gpm pump .....	\$140 <sup>00</sup>	
25 gallon w/ 1.8 gpm pump .....	\$155 <sup>00</sup>	w/ 100# pressure ... \$190 <sup>00</sup>
25 gallon Deluxe .....	\$345 <sup>00</sup>	
includes 3.5 gpm pump, pressure gauge, by-pass valve, and 1/4 turn ball valve for boom supply		
25 gallon Deluxe with 5.3 gpm pump.....	\$410 <sup>00</sup>	

## STANDARD EQUIPMENT

- ShurFlo 12-Volt Pump.
- Spraying Systems Poly Trigger Gun with adjustable nozzle.
- Non-corrosive poly tank with 5" screw-on lid.
- Tank Drain for easy clean-out.

## AVAILABLE OPTIONS

Deluxe Trigger Spray Gun w/ Poly Adj. Tip ..... add \$34<sup>00</sup>

150" Coverage Folding Spray Boom..... \$165<sup>00</sup>



# FOAM MARKERS

## High Capacity

25 Gallon Poly Tank  
Right-Left Switching  
Needle Valve Adjustment  
Thick Consistent Foam  
4" Foam Collectors  
12-Volt Compressor and Pump  
Quick Disconnect Wiring Harness  
Simple Operation  
Easy Installation

**\$995<sup>00</sup>**



The LM 25-gallon foam marker can be mounted on any type of spray applicator. The liquid and air are mixed at the end of the boom producing a high quality foam. Hose is supplied for a 60' boom, with additional available upon request. The main unit is preassembled with only the mounting of the drop tubes and hose connections required.

Switch

\$12<sup>80</sup>



Foam Drop

\$21<sup>00</sup>



Solenoid Valve

\$82<sup>50</sup>



Mix Chamber

\$18<sup>80</sup>



Foam Dye also available.  
Please call for current pricing.

FOAM MARKER	Specifications
Foam Output	8.4 gpm
Max. Solution Usage	11.4 gph
Ave. Drop Interval	2.8 seconds

## StayFoam 120 Concentrate

*1 gallon.. \$48<sup>60</sup>*

STF120 produces a thick, bright white foam featuring high visibility that performs well under adverse conditions. Stayfoam 120 is reliable when applied in hot weather, to extremely dry soil and intense sunlight. The features provided in STF 120 enable the applicator to properly align the spraying equipment, resulting in accuracy during the application process.



Mixing rates:  
1 oz to 1 gallon water

## SHUR-FLO 12 VOLT PUMPS

Model	GPM	Pump Type	Use	Price
8000-541-236	1.0	Demand	Spot Sprayer .....	\$78.00
8000-543-236	1.8	Demand	Spot Sprayer .....	\$105.60
2088-443-144	3.5	Demand	Spot Sprayer .....	\$115.00
8000-543-250	1.8	Bypass	Foam Marker.....	\$103.00
Delavan	5.0	Demand	Spot Sprayer .....	\$165.00
8000-543-238	1.8	Demand	100# Spot Sprayer ..	\$132.00



Model: 8000-543-238

## THOMAS COMPRESSORS

(for Foam Markers)



Standard: \$430<sup>00</sup>

High Capacity: \$471<sup>00</sup>



## Gas Engine Polypropylene Transfer Pumps



### Pump Performance Model 1542P-65SP

2" x 2" NPT self-priming centrifugal pump powered by a 6.5 HP PowerPro engine.

**Max Flow Rate:** 200 gpm  
**Max Pressure:** 58 psi

**\$340<sup>00</sup>**

Other applications include:

- Polypropylene housing is suitable for corrosive environments
- PowerPro engine with overhead valve
- Easily handles high capacity liquid transfer jobs



### Pump Performance Model 1543P-130ESP

3" Poly Pump powered by 13 hp PowerPro Engine w/ electric start.

**Max Flow Rate:** 440 gpm  
**Max Pressure:** 54 psi

**\$995<sup>00</sup>**

*Highest efficiency and horsepower on the market!*





PTOC-600-65SPQC



PTOC-600-QC



FMC-150-MIA

**PTO DRIVEN  
CENTRIFUGAL  
PUMPS**

<b>1¼" Suction x 1" Discharge</b>			
Model	Description	Wt.	Price
PTOC-600-QC	Cast iron straight centrifugal with pulleys and 10 groove belt arranged for direct mounting on 1-2/8" 600 rpm PTO shaft. 0-70 psi. Equipped with 6 spline quick coupler PTO drive shaft. Viton mechanical seal. Fully guarded for operator safety.	46	\$828.00
PTOC-600-B	Cast iron straight centrifugal with pulleys and 10 groove belt. One-inch diameter stub shaft and integral mounting base. 600 rpm Tumblerod drive shaft. 0-70 psi. Equipped with Viton mechanical seal. Fully guarded for operator safety.	42	\$828.00
PTOC-1000-21SP	Cast iron straight centrifugal with pulleys and 10 groove belt arranged for direct mounting on 1-3/8" 1000 rpm PTO shaft. 0-70 psi. Equipped with 21 spline split PTO drive shaft and split ring locking collar. Viton mechanical seal. Fully guarded for operator safety.	43	\$835.00
PTOC-1000-20SP	Cast iron straight centrifugal with pulleys and 10 groove belt arranged for mounting on 1-3/4" 1000 rpm PTO shaft. 0-70 psi. Equipped with 20 spline split PTO drive shaft and split ring locking collar. Viton mechanical seal. Fully guarded for operator safety.	45	\$882.00
PTOC-1000-B	Cast iron straight centrifugal with pulleys and 10 groove belt. 0-70 psi. One-inch diameter stub shaft and integral mounting base for 1000 rpm Tumblerod drive shaft. Viton mechanical seal. Fully guarded for operator safety.	40	\$848.00
<div> <b>1½" Suction x 1¼" Discharge</b> <div> <b>150 SERIES</b> HIGH PERFORMANCE </div> </div>			
Model	Description	Wt.	Price
PTOC-150-600-6SPQC	0-100 psi, cast iron straight centrifugal with pulleys and 10 groove belt assembled for direct mounting on 1-3/8", 600 rpm PTO shaft, equipped with Quick Coupler. Viton mechanical seal. Fully guarded for operator safety.	51	\$930.00
PTOC-150-600-B	0-100 psi, cast iron straight centrifugal with pulleys and 10 groove belt. One-inch diameter stub shaft and integral mounting base for 600 rpm Tumblerod drive shaft. Viton mechanical seal. Fully guarded for operator safety.	52	\$930.00
PTOC-150-1000-21SP	0-100 psi, cast iron straight centrifugal with pulleys and 10 groove belt arranged for direct mounting on 1-3/8" 1000 rpm PTO shaft. Equipped with 21 spline PTO shaft and locking collar. Viton mechanical seal. Fully guarded for operator safety.	48	\$932.00
PTOC-150-1000-20SP	0-100 psi, cast iron straight centrifugal with pulleys and 10 groove belt arranged for direct mounting on 1-3/4" 1000 rpm PTO shaft. Equipped with 20 spline PTO shaft and locking collar. Viton mechanical seal. Fully guarded for operator safety.	50	\$963.00
PTOC-150-1000-B	0-100 psi, cast iron straight centrifugal with pulleys and 10 groove belt. One-inch diameter stub shaft and integral mounting base for 1000 rpm Tumblerod drive shaft. Viton mechanical seal. Fully guarded for operator safety.	45	\$930.00
FMC-150-MIA	Replacement Pump for PTOC-150 Models	23	\$368.00

FMC-150-HYD-206

1½" x 1¼"

Suction Discharge



**150 SERIES**  
**HIGH PERFORMANCE**



**#LS206N**

**Flow Limiter\* \$70<sup>80</sup>**

\*Required on Load Sensing Closed  
Center Hydraulic Systems

**\$735<sup>00</sup>**

## CENTRIFUGAL PUMP--TRACTOR HYDRAULIC SYSTEM DRIVEN

- > The High Performance Pump: 88 gpm at 100 psi.
- > Provides higher pressure and greater volume for applications with large tanks and longer spray booms.
- > The 206 motor requires 7 gpm hydraulic fluid input and fits virtually all tractor hydraulic systems.

Recommended for:

- » Pressure Compensating Closed Center Systems
- » Load Sensing Closed Center Systems
- » Open Center Systems up to 16 gpm using internal needle valve bypass.



## ***HYPRO CENTRIFUGAL PUMPS***

### **Series 9000 Gear-Driven Models**

Model No.	Max. GPM	Max PSI	Max RPM	Description	Price	Est. Wt. Each
9006C-O	117	80	893	Cast iron pump with oil-lubricated gear drive and 1 3/8" 540 rpm PTO hub with locking collar and mounting clip. Clips pump to PTO shield of most tractors. 1½" inlet; 1¼" outlet	\$826	44 lbs.
9008C-0	110	70	926	Cast iron pump with oil-lubricated gear drive and 1 3/8" 1000 rpm PTO hub with locking collar and mounting clip. Clips pump to PTO shield of most tractors. 1½" inlet; 1¼" outlet	\$878	45 lbs.
9016C-0	117	80	881	Cast iron pump with oil-lubricated gear drive and 1" solid shaft, ports (NPT); 1½" inlet; 1¼" outlet	\$816	41 lbs.
9018C-0	110	70	915	Cast iron pump with oil-lubricated gear drive and 1" solid shaft, ports (NPT); 1½" inlet; 1¼" outlet	\$864	42 lbs.
9028C-0	110	70	1075	Cast iron pump with oil-lubricated gear drive and 1¼" 1000 rpm PTO hub with locking collar and mounting clip. Clips pump to PTO shield of most tractors; 1½" inlet; 1¼" outlet	\$1,019	48 lbs.

## ***HYPRO HYDRAULIC PUMPS***

Model No.	Max. GPM	Max PSI	Hydraulic Motor gpm	Description	Price	est. Wt. each
9303C-HM1C	114	130	9-14 gpm	Used for open or closed center systems. 1-1/2" NPT inlet, 1-1/4" NPT outlet.	\$761	26 lbs
9306C-HM1C	207	130	9-14 gpm	Used for open or closed center systems. 2" NPT inlet, 1-1/2" NPT outlet.	\$883	33 lbs



Series 9000



9303C-HM1C



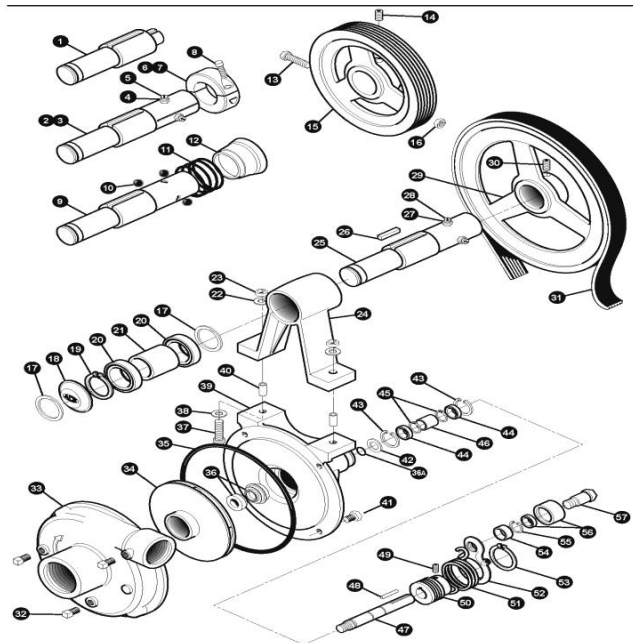
9306C-HM1C

REF. #	PART #	DESCRIPTION	PRICE
1	BAC-10-S	Shaft, 1" Tumblerod stub	\$260.00
2	BAC-10-175-20SP	Shaft, 1-3/4" 20 Tooth PTO spline, includes BAC-11-175	\$354.00
3	BAC-10-21SP	Shaft, 1 3/8" 21 Tooth PTO spline, includes BAC-11	\$334.00
4	40960	Nut, 3/8" NC, jam	\$0.55
5	BAC-40	Set screw, 3/8" NC slotted	\$1.05
6	BAC-11-175	Locking collar, split ring (for BAC-10-175-20SP shaft)	\$127.00
7	BAC-11	Locking collar, split ring (for BAC-10-21SP shaft)	\$94.00
8	BAC-11-1	Set screw (for BAC-11 and BAC-11-175 locking collar)	\$1.10
9	BAC-10-6SP-QC	Shaft, 1-3/8" 6 Tooth PTO spline, for quick coupler	\$268.00
10	BAC-83-QC	Ball for quick coupler	\$1.55
11	BAC-82-QC	Spring for quick coupler	\$12.50
12	BAC-81-QC	Ball retainer sleeve for quick coupler	\$33.00
13	41250	Cap screw, 5/16" NC x 3-1/4", hex head	\$2.10
14	41300	Set screw, 3/8" NC x 5/8", allen head	\$0.80
15	BAC-30-10-M	Pulley, 6.375" P.D. x 2" Bore, Poly-V (for PTOC-1000-21SP & -B)	\$211.00
15	BAC-30-175	Pulley, 6.375" P.D. x 2-3/8" Bore, Poly-V (for PTOC-1000-20SP)	\$227.00
16	BAC-63	Nut, 5/16" NC, self locking, for tumblerod drive	\$0.80
17	BAC-34	Snap ring, internal, BAC-15 bearing housing	\$5.10
18	BAC-27	Name plate	\$12.00
19	BAC-35	Snap ring, external, BAC-10 drive shaft	\$1.05
20	BAC-31-1	Bearing, sealed, BAC-10 drive shaft	\$41.00
21	BAC-38-1	Spacer, bearing, BAC-10 shaft	\$30.90
22	BAC-44	Washer, 3/8" locking	\$0.50
23	BAC-45	Nut, hex, 3/8" NC	\$0.50
24	BAC-15	Housing, PTO drive shaft bearing housing	\$170.00
24	BAC-15-B	Housing, tumblerod drive shaft bearing housing with mounting base	\$243.00
25	BAC-10-6SP	Shaft, 1-3/8" 6 Tooth PTO spline drive	\$264.00
26	BAC-51	Shaft, 3/8" x 1/2" x 1-1/2" key, PTO drive shaft	\$5.60
27	40960	Nut, jam, 3/8" NC	\$0.55
28	BAC-40	Set screw, 3/8" NC, slotted	\$1.05
29	BAC-30-10	Pulley, 10.6" P.D. x 2" bore Poly-V pulley, 10 groove (for PTOC-600)	\$219.00
30	41300	Set screw, 3/8" NC x 5/8", allen head	\$0.80
31	BAC-28-10	Belt, Poly-V, 10 groove (for PTOC-600)	\$40.00
31	BAC-28-10-M	Belt, Poly-V, 10 groove (for PTOC-1000)	\$40.00
32	BAC-53	Pipe plug, 1/8" NPT	\$0.60
32	41120	Pipe plug, 1/8" NPT, stainless steel (optional)	--
33	BAC-12	Volute 1-1/4" x 1", cast iron	\$206.00
34	BAC-26-CI	Impeller, cast Iron, left hand thread (optional)	\$165.00
34	BAC-26-VALOX	Impeller, Valox, left hand thread	\$75.00
35	BAC-4-A	O-ring, volute seal	\$8.15
36	BAC-7SC	Seal, silicon carbide mechanical (includes 40160) (optional)	\$139.20
36	BAC-7V	Seal, Viton, mechanical (includes 40160 O-ring)	\$40.80
36A	40160	O-ring for mechanical seal	\$1.00

REF. #	PART #	DESCRIPTION	PRICE
37	BAC-42	Cap screw, 3/8" NC x 2" hex head	\$1.55
38	BAC-43	Washer, 3/8" flat	\$0.50
39	BAC-14-MIA	Mounting frame, machined for idler arm	\$216.00
40	BAC-15-PIN	Alignment pin	\$1.05
41	40950	Cap screw, 3/8" NC x 3/4" hex head	\$0.55
41	40930	Cap screw, 3/8" NC x 3/4" hex head, stainless steel (optional)	\$2.60
42	BAC-54	Slinger	\$1.55
43	BAC-33	Snap ring, internal, for mounting frame	\$2.05
44	BAC-37	Bearing, sealed, for pump shaft	\$16.00
45	BAC-32	Snap ring, external, for driven pump	\$0.55
46	BAC-32-S	Spacer for pump shaft	\$6.10
47	BAC-6-SS	Shaft, 5/8", left hand course thread, stainless steel	\$105.60
48	BAC-50	Key, 3/16" x 3/16" x 1-1/4"	\$1.55
49	BAC-57	Cap screw, 5/16" NC x 5/16" allen head,	\$0.80
50	BAC-29-10-1.50	Pulley, 1.5" P.D. x 5/8" bore, Poly-V, 10 groove	\$66.40
51	BAC-5	Spring, idler mounted torsion	\$22.40
52	BAC-13	Idler arm	\$72.80
53	BAC-36	Snap ring, external, BAC-13 idler arm	\$2.05
54	BAC-46	Spacer, 5/8"	\$30.50
55	41070	Retainer ring	\$0.75
56	BAC-55	Idler bearing and outer roller assembly	\$52.00
57	BAC-47	Cap screw, 5/8" NC x 2 1/8" hex head idl	\$8.25
#	BAC-52	Chain, 1/4" cold shut, torque anchor	\$4.10
#	BAC-58	Zerk fitting, 1/4" NPT, for idler arm	\$3.05
#	BAC-55-A	Idler arm assembly (includes 52 through	\$156.40

## Parts List for ACE Centrifugal Pumps

Exploded view drawing, PTOC series



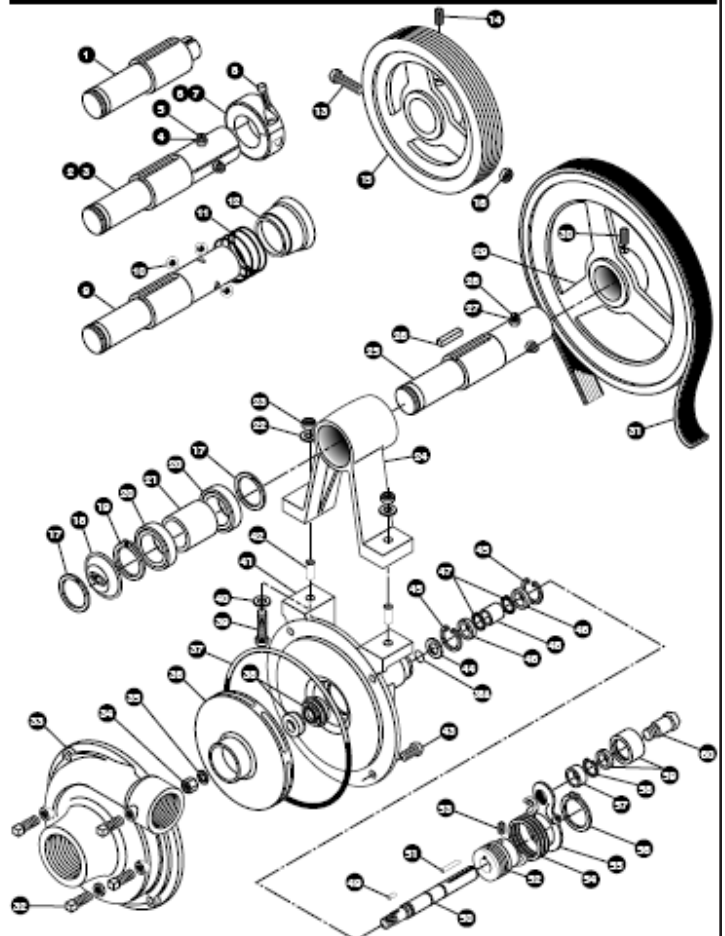


# ACE PUMPS PARTS -- 150 SERIES BELT DRIVE

Ref. #	Part No.	Description	Price
1	*BAC-4-150	"O" Ring, Volute Seal - - - - -	\$8.15
2	BAC-5-150	Idler mounted torsion spring - - -	-\$25.50
3	BAC-6-150/200-SS	3/8" Driven Shaft with Keyway, S.S. -	\$104.00
4	*BAC-7V	Viton Mechanical Seal - - - - -	-\$40.80
#	*40160	"O" Ring for Shaft - - - - -	\$1.00
6	BAC-10-6SP-QC	1-3/8" 6 Tooth PTO shaft, Q/C - -	-\$268.00
7	BAC-10-175-20SP	1-3/4" 20 Tooth PTO shaft - -	-\$354.00
8	BAC-10-21SP	1-3/8" 21 Tooth PTO shaft - -	-\$334.00
9	BAC-10-S	1" Tumblerod stub drive shaft	\$260.00
10	BAC-11	Split ring, locking collar - - -	-\$94.00
11	BAC-11-175	Split ring, locking collar - - -	-\$127.00
12	BAC-11-1	Set screw - - - - -	\$1.10
13	BAC-12-150	Volute, 1 1/2" x 1 1/4" - - - - -	-\$256.00
14	BAC-13	Idler Arm - - - - -	-\$72.80
15	BAC-14-150-MIA	Mounting frame, M.I.A. - - -	-\$270.00
16	BAC-15	PTO Drive shaft bearing housing -	\$170.00
#	BAC-15-B	Tumblerod housing w/ Mounting -	-\$243.00
17	BAC-26-150-P	Impeller, poly - - - - -	-\$74.40
17	BAC-26-150-CI	Impeller, Cast Iron with Keyway -	\$179.00
18	BAC-27-150-M	Name Plate (21SP) - - - - -	-\$12.00
18	BAC-27-150-175-M	Name Plate (20SP) - - - - -	-\$12.00
18	BAC-27-150-600	Name Plate (600) - - - - -	-\$12.00
19	*BAC-28-10-150	Poly-V Belt, 10 groove (600) - -	-\$48.00
#	*BAC-28-10M-150	Poly-V Belt, 10 groove (1000)-	-\$48.00
20	BAC-29-10-1.35	1.35" P.D.x 5/8" V pulley - - -	-\$66.40
#	BAC-29-10-1.70	1.7" P.D. x 5/8" V pulley- - -	-\$66.40
21A	BAC-30-10-150	11.6" P.D. x 2" V pulley - - -	-\$232.00
21B	BAC-30-175-150	7.9" P.D. x 2-3/8" V pulley - -	-\$248.00
21B	BAC-30-10M-150	7.9" P.D. x 2" V pulley - - -	-\$227.20
22	BAC-31-1	Sealed ball bearing - - - - -	-\$41.00
23	BAC-32	External snap ring- - - - -	\$.55
24	BAC-32-S	Spacer for pump shaft - - - -	\$6.10
25	BAC-33	Internal snap ring - - - - -	\$2.05
26	BAC-34	Internal snap ring - - - - -	\$5.10
27	BAC-35	External snap ring- - - - -	\$1.05
28	BAC-36	External snap ring - - - - -	\$2.05
29	BAC-37	Sealed Ball Bearing - - - - -	-\$16.00
30	BAC-38-1	Bearing spacer - - - - -	-\$30.90
31	40930	Hex head cap screw S.S. - - -	\$2.55
31	40950	Hex head cap screw- - - - -	\$.55
32	BAC-40	3/8" NC Slotted Set Screw - - -	\$1.05
33	40960	3/8" NC Jam Nut - - - - -	\$.55
34	BAC-42	3/8" NC x 1-3/4" cap screw- - -	\$1.50

Ref. #	Part No.	Description	Price
35	BAC-43	3/8" Flat Washer	\$.50
36	BAC-44	3/8" Lock Washer	\$.50
37	BAC-45	3/8" NC Hex Nut	\$.50
38	BAC-46	5/8" Spacer	\$30.50
39	BAC-47	Idler Cap Screw	\$8.25
40	BAC-49	Retainer Ring	\$.75
41	BAC-50	3/16" x 3/16" x 1 1/4" Key	\$1.55
42	BAC-51	3/8" x 1/2" x 1 1/2" Key	\$5.60
43	BAC-52	1/4" Cold Shut Chain Anchor	\$4.10
44	BAC-53	1/8" NPT Pipe Plug	\$.60
45	BAC-54	Slinger	\$1.55
46	BAC-55	Idler bearing and outer assembly	\$52.00
47	BAC-57	Allen head set screw	\$.80
48	41250	Allen head cap screw	\$2.10
49	BAC-63	5/16" NC self-locking nut	\$.80
50	41300	Allen head set screw	\$.80
52	BAC-81-QC	Ball Retainer Sleeve	\$33.00
53	BAC-82-QC	Spring for Quick Coupler	\$12.50
54	BAC-83-QC	Ball for Quick Coupler	\$1.55
55	BAC-23-A-SS	3/8" NF Hex Nut, S.S.	\$11.70
56	BAC-24-HYD-SS	3/8" Washer, S.S.	\$2.00
57	BACH-25	1/8" x 1/8" x 1/2"	\$1.05

## EXPLODED VIEW DRAWING



# Delavan Roller Pumps



Model 6900C

Model No.	Max GPM	Max PSI	Description	Price
6900C	20.0	300	Cast iron 6 roller pump, 11/16" rollers	\$132.00
8900C	24.0	300	Cast iron, 8 roller pump, 11/16" rollers	\$173.00
PTO Pump Coupler . . . \$39.00				

Model 6900C  
1200 rpm  
5/8" solid steel shaft  
3/4" NPT port

Model 8900C  
1000 rpm  
15/16" solid steel shaft  
1" NPT port

All pumps contain Ultra Rollers for better performance, wear life, and smooth operation. Viton seals and stainless steel shafts are standard.

## DirectoValve

\$208<sup>50</sup>

Nylon Ball Valves  
for Pressures up  
to 300 PSI



344BEC-24-C Remote  
Control Electric Ball  
Valves Compatible with  
All Sprayer Controls

- Works with a simple single pole off/on switch.

## CALC•AN•ACRE II

*Speed,  
Distance,  
and Area  
Monitor*



w/ Magnetic  
Speed Sensor

\$378<sup>00</sup>

## The Astro Series of GPS-Based Speed Sensors

**Note:** It is necessary to know the make and model of the controller you will be hooking it up to.

\$298<sup>00</sup>



## The Astro II

- Great Price!
- Compact
- Accurate
- Durable
- Easy transfer from one vehicle to another

# Electric Sprayer Controls

## All Sprayer Control Kits include:

- Control Panel,
- Pressure Regulator
- Gauge Tee
- 16-Foot Wiring Cables
- Gauge Tube.

Kits may be ordered with or without directo valves.



AAK-744A-100L-33S  
3 Section Control Kit

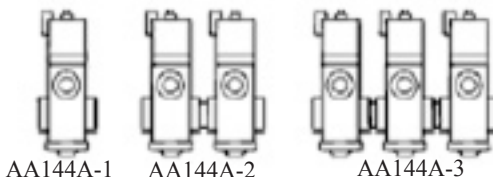
## SPRAYER CONTROL KITS

Kit No.	Description	744-3 Triple Control	AA244-3 Regulator	Directo Valve	Price
AAK-744A-100L-30S	Triple Control	1	1	--	\$332.00
AAK-744A-100L-33S	<b>90-50163</b> Triple Control	1	1	AA144A-3	\$532.00
AA244-3/4	Regulator Only, 3/4" FNPT				\$122.00
AAK-744A-100L	Console and Wiring Kit				\$295.00

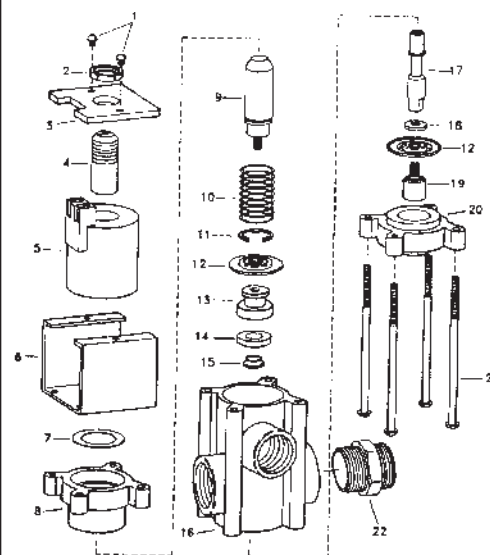
The 744A Sprayer Controls used in these kits can be used for operating pressures to 100 psi. Higher pressures are available on a special order basis

## DIRECTOVALVE Electronically Operated Valve

Mfg.'s Part No.	Description	List Price
AA144A-1	1 Unit Valve ...	\$99.95
AA144A-2	2 Unit Valve ..	\$201.10
AA144A-3	3 Unit Valve ..	\$302.25



Designed for remote "on-off" control of spray booms and nozzles from operator's location. Operates on a 12-volt DC system (2 Amp Current Draw). For pressures to 100 psi.



Ref.	Part No.	Description	Price
1	CP-14933-SS	Screw, (2 req'd)	\$1.92
2	CP15168-IENP	Jam Nut	\$6.40
4	CP15161-IENP	Armature Stop	\$13.65
5	CP15163-NYB	Coil Assembly	\$50.45
7	CP15169-SS	Washer	\$2.48
8	CP15164-NYB	Upper Diaphragm Housing	\$6.68
9	CP15170-IENP	Armature	\$25.17
10	Available in Kit Only		
11	CP14813-IENP	Retaining Ring	\$2.48
12	Available in Kit Only		
13	CP14807-SS	Seat Washer	\$20.37
14	Available in Kit Only		
15	CP14811-SS	Spacer	\$5.87
16	CP14801-PP	Body, Polypropylene	\$18.09
17	CP14812-SS	Stem, Stainless Steel	\$23.04
18	CP14806-SS	Washer, Stainless Steel	\$6.74
19	CP15162-SS	Lower Diaphragm Piston	\$12.82
20	CP15165-NYB	Lower Diaphragm Housing	\$24.82
21	CP14819-SS	Screw, Stainless Steel (4 req'd)	\$2.27
22	CP21737-NYB	Connecting Nipple	\$1.20
	PK-AB144A-1-KIT	Repair Kit	\$27.40





# DirectoValve® 450 Manifold



453BEC Manifold

## 450BEC Features:

- Maximum pressure 150 psi (10 bar)
- Easy mounting with built-in brackets
- Nylon stem and polypropylene ball available as standard
- Flow rate 31 GPM @ 5 psi pressure drop (flow rates may vary based on number of valves and inlet size)
- No external fuses--incorporates an internal resettable fuse

~~disconnect power to valve for  
20 seconds to reset~~

#451BEC ....1-Valve Manifold .....\$224<sup>00</sup>

#452BEC ....2-Valve Manifold .... \$399<sup>00</sup>

#453BEC ....3-Valve Manifold ....\$585<sup>00</sup>

#454BEC .... 4-Valve Manifold..... \$766<sup>00</sup>

#455BEC .... 5-Valve Manifold..... \$946<sup>00</sup>

Replacement Motor only.... \$190<sup>00</sup>

## Chemical Gloves

100% Nitrile Gloves  
13" color: Green

- Non-Slip Grip
- Puncture Resistant
- Comfortable
- USDA Accepted



**\$29<sup>90</sup>**  
per dozen

## Chemical Isolator Kit

**\$49<sup>50</sup>**



- Keeps chemicals from entering tractor or truck cab
- Protects and dampens gauge from corrosive chemicals
- Atlas diaphragm
- Comes with fittings for 1/8" and 1/4" diameter gauge tubing

## Manual Pressure Relief/Regulating Valves

**\$19<sup>80</sup>**



**Inlet, 3/4" MNPT  
Outlet, 3/4" FNPT**

Bypasses excess liquid. Chemical-resistant diaphragm seals off operating parts from contact with chemicals and remains resilient for chatter-free, responsive pressure control.

### A / Male Adapter Female Thread



Size	Part No.	Price
¾" Female NPT	075-A	\$4.20
1" Female NPT	100-A	\$4.20
1½" Female NPT	150-A	\$4.80
2" Female NPT	200-A	\$5.60
3" Female NPT	300-A	\$13.60

### D / Female Coupler Female Thread



Size	Part No.	Price
¾" Female NPT	075-D	\$9.40
1" Female NPT	100-D	\$10.90
1½" Female NPT	150-D	\$12.90
2" Female NPT	200-D	\$16.40
3" Female NPT	300-D	\$26.45

### B / Coupler X Male NPT



Size	Part No.	Price
1½" Female Coupler, Male Thread	150-B	\$12.90
2" Female Coupler, Male Thread	200-B	\$16.50

### F / Male Adapter Male Thread



Size	Part No.	Price
1½" M x M	150-F	\$4.90
2" M x M	200-F	\$6.65
3" M x M	300-F	\$17.40

### PRESSURE GAUGES



1/4" Bottom Fitting, Brass Stem		
2½" Face		
Description	Part No.	Price
0-100 psi	100G	\$9.40
MPT - Brass Stem, 4" Face		
0-100 psi	100-G4	\$20.40
Liquid Filled, 2½" Face		
0-100 psi	100 LG	\$19.90
Liquid Filled, 4" Case		\$48.90

### CAP / CAP for Male Adapter



Size	Part No.	Price
¾" Cap for Adapter	075-CAP	\$9.40
1" Cap for Adapter	100-125-CAP	\$10.90
1½" Cap for Adapter	150-CAP	\$12.60
2" Cap for Adapter	200-CAP	\$16.40
3" Cap for Adapter	300-CAP	\$25.90

### PL / Plug for Female Coupler



Size	Part No.	Price
¾" Plug for Coupler	075-PL	\$4.40
1" Plug for Coupler	100-125-PL	\$4.40
1½" Plug for Coupler	150-PL	\$4.90
2" Plug for Coupler	200-PL	\$6.60
3" Plug for Coupler	300-PL	\$13.80

**WARNING!**

Brass Stem Gauges are **NOT** to be used with Ammonia!



**Poly Ball Valve**

Size	Part No.	Price
3/4"	V-075	\$22.40
1"	V-100	\$24.50
1-1/4" Full Port	V-125-FP	\$29.95
1-1/2" Full Port	V-150-FP	\$29.95
2" Full Port-4 Bolt	V-204-FP	\$39.90
3" Full Port	V-300-FP	\$94.70

## VALVES



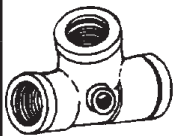
**Poly Nozzle (Ball) Valve**

Size	Part No.
2" Full Port	VXA-204-FP
Price: \$52.20	



**Union Ball Valve**

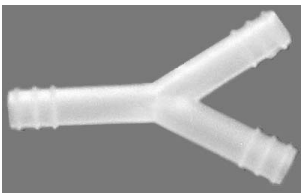
Size	Part No.	Price
1/2"	050-SUBV	\$10.20
3/4"	075-SUBV	\$11.90
1"	100-SUBV	\$14.40
1 1/4"	125-SUBV	\$23.60
1-1/2"	150-SUBV	\$29.50
2"	200-SUBV	\$38.60
2"	3-Way Valve	\$56.20



Size	Part No.	Price
3/4"	TT12	\$4.60

**Female National Pipe Thread Tee with 1/4" Gauge Port**

## Y FITTINGS



**Y Barb Fitting**  
1/4" .. \$2<sup>80</sup>  
3/8" .. \$2<sup>80</sup>

## Plastic Ties

In packages of 100



7"----- 50# .....\$6.95  
11" --- 50# .....\$9.45  
14" --- 120# .....\$16.60

## LINE STRAINERS



**1 1/4" - 2" Polypropylene Line Strainer**

1-1/4" Line Strainer w/ 50 Mesh Screen	LS-125-50	\$25.40
1-1/2" Line Strainer w/ 50 Mesh Screen	LS-150-50	\$44.40
2" Line Strainer w/ 50 Mesh Screen	LS-200-50	\$44.40
20 Mesh Screen only	LS-220	\$25.30
50 Mesh Screen only	LS-240	\$25.20
80 Mesh Screen only	LS-280	\$25.20
LS-200/G	Gasket	\$2.90

## Nylon Line Strainer

**3/4" and 1"**

3/4" Nylon Strainer w/ 40 Mesh Screen	\$15.00
1" Nylon Strainer w/ 40 Mesh Screen	\$15.00
40 Mesh Screen	\$8.20
80 Mesh Screen only	\$8.20
Gasket	\$1.80





# POLYPROPYLENE and NYLON PIPE FITTINGS



## Pipe Nipples

Size	Part No.	Price
1/4" x Close	TN5044	60¢
3/8" x Close	TN5066	\$1.00
1/2" x Close	TN5088	\$1.10
3/4" x Close	TN51212	\$1.20
1" x Close	TN51616	\$1.60
1-1/4" x Close	TN52020	\$1.90
1-1/2" x Close	TN52424	\$2.90
2" x Close	TN53232	\$4.40
3" x Close	TN54848	\$12.80



## Hexagon Head Bushing MNPT x FNPT

Size	Part No.	Price
1/2" x 3/8"	RB86	\$1.30
3/4" x 1/4"	RB124	\$1.30
3/4" x 1/2"	RB128	\$1.30
1" x 3/4"	RB1612	\$1.40
1-1/4" x 3/4"	RB2012	\$2.25
1-1/4" x 1"	RB2016	\$2.10
1-1/2" x 3/4"	RB2412	\$2.40
1-1/2" x 1-1/4"	RB2420	\$2.40
2" x 1-1/4"	4B3220	\$3.60
2" x 1-1/2"	RB3224	\$3.60
3" x 2"	RB4832	\$12.60



## Reducing Pipe Nipples

Size	Part No.	Price
3/4" x 1/2"	TRN60128	\$1.80
1" x 3/4"	TRN601612	\$3.95
1-1/4" x 1"	TRN602016	\$3.95



## Pipe Couplings FNPT x FNPT

Size	Part No.	Price
1/2"	CC88	\$3.10
3/4"	CC1212	\$3.20
1"	CC1616	\$4.50
1-1/4"	CC2020	\$5.10
1-1/2"	CC2424	\$5.40
2"	CC3232	\$5.90



## Female National Pipe Thread Tee

Size	Part No.	Price
1/4"	TT4	\$3.10
1/2"	TT8	\$3.30
3/4"	TT12	\$4.65
1"	TT16	\$7.40
1-1/4"	TT20	\$8.90
1-1/2"	TT24	\$12.40
2"	TT32	\$12.90
3"	TT48	\$44.60



## Female National Pipe Thread 90° Elbow

Size	Part No.	Price
1/2"	EL88	\$2.90
3/4"	EL1212	\$3.20
1"	EL1616	\$4.40



## 90° Street Elbow

Size	Part No.	Price
1/4"	SE44	\$2.20
1/2"	SE88	\$2.85
3/4"	SE1212	\$3.40
1"	SE1616	\$4.50
1-1/4"	SE2020	\$6.55
1-1/2"	SE2424	\$7.75
2"	SE3232	\$9.90
3"	SE4848	\$47.80



## Pipe Plug

Size	Part No.	Price
1/4"	TP4004	50¢
1/2"	TP4008	50¢
3/4"	TP4012	.60¢
1"	TP4016	80¢
1-1/4"	TP4020	\$1.30
1-1/2"	TP4024	\$1.90
2"	TP4032	\$2.30
3"	TP4048	\$16.90



## Male National Pipe

Size	Part No.	Price
3" x 3"	TA104848	\$12.60
2" x 2"	TA103232	\$3.40
1-1/2" x 1-1/2"	TA102424	\$2.90
1-1/2" x 1-1/4"	TA102420	\$2.40
1-1/4" x 1-1/2"	TA102024	\$2.40
1-1/4" x 1-1/4"	TA102020	\$2.30
1-1/4" x 1"	TA102016	\$2.20
1-1/4" x 3/4"	TA102012	\$2.20
1" x 1-1/4"	TA101620	\$1.80
1" x 1"	TA101616	\$1.20
1" x 3/4"	TA101612	95¢
3/4" x 3/8"	TA10126	60¢
3/4" x 1/2"	TA10128	60¢
3/4" x 5/8"	TA101210	65¢
3/4" x 3/4"	TA101212	65¢
3/4" x 1"	TA101216	65¢
1/2" x 1/4"	TA1084	50¢
1/2" x 3/8"	TA1086	50¢
1/2" x 1/2"	TA1088	50¢
1/2" x 5/8"	TA10810	60¢
1/2" x 3/4"	TA10812	60¢
3/8" x 1/4"	TA1064	45¢
3/8" x 3/8"	TA1066	45¢
3/8" x 1/2"	TA1068	45¢
1/4" x 1/4"	TA1044	45¢
1/4" x 3/8"	TA1046	45¢
1/4" x 1/2"	TA1048	45¢
1/8" x 1/4"	TA1024	45¢
1/8" x 3/8"	TA1026	45¢

# Polypropylene and Nylon Pipe Fittings



## Male National Pipe Thread x Hose Barb 90° Elbow

Size	Part No.	Price
3" x 3"	TE104848	\$38.90
2" x 2"	TE203232	\$4.40
1-1/2" x 1-1/2"	TE202424	\$3.40
1-1/4" x 1-1/2"	TE202024	\$2.95
1-1/4" x 1-1/4"	TE202020	\$2.40
1-1/4" x 1"	TE202016	\$2.70
1-1/4" x 3/4"	TE202012	\$2.90
1" x 1"	TE201616	\$1.70
1" x 3/4"	TE201612	\$1.70
3/4" x 3/8"	TE20126	\$1.00
3/4" x 1/2"	TE20128	\$1.00
3/4" x 5/8"	TE201210	\$1.05
3/4" x 3/4"	TE201212	\$1.05
3/4" x 1"	TE201216	\$1.40
1/2" x 1/4"	TE2084	\$1.00
1/2" x 3/8"	TE2086	\$1.00
1/2" x 1/2"	TE2088	\$1.00
1/2" x 5/8"	TE20810	\$1.00
1/2" x 3/4"	TE20812	\$1.00
3/8" x 3/8"	TE2066	80¢
3/8" x 1/2"	TE2068	80¢
1/4" x 1/4"	TE2044	70¢
1/4" x 3/8"	TE2046	70¢
1/4" x 1/2"	TE2048	80¢

## Hose Barb x Hose Barb 90° Elbow



Size	Part No.	Price
1/2" x 1/2"	TE2088T	75¢
3/4" x 3/4"	TE201212T	\$1.00
1" x 1"	TE201616T	\$1.50
1-1/4" x 1-1/4"	TE202020T	\$4.20
1-1/2" x 1-1/2"	TE202424T	\$4.20
2" x 2"	TE203232T	\$8.10

## Swivel Nuts for Barbs Below



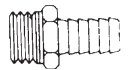
3/4" FGHT	GHN12	\$1.00
3/4" FNPT	RN12	\$1.00

## Swivel Barbs for Nuts Above



1/4" Swivel	GHA4	80¢
3/8" Swivel	GHA6	80¢
1/2" Swivel	GHA8	80¢
5/8" Swivel	GHA10	80¢
3/4" Swivel	GHA12	80¢

## Male Garden Hose Thread x Hose Barb



3/4" X 3/8"	GA106	90¢
3/4" X 1/2"	GA108	90¢
3/4" X 5/8"	GA1010	90¢
3/4" X 3/4"	GA1012	90¢

## Female National Pipe Thread x Hose Barb 90° Elbow



3/4" X 1/2"	TO234	\$1.90
3/4" X 3/4"	TO434	\$1.90

# Sprayer Hoses

## EPDM Lasso Resistant Rubber Hose



I.D. Size	Price/Foot
1/4"	60¢
3/8"	64¢
1/2"	96¢
5/8"	\$1.30
3/4"	\$1.42
1"	\$1.98
1-1/4"	\$4.20
1-1/2"	\$5.50
2"	\$6.90

**10%  
DISCOUNT  
ON FULL  
ROLLS**

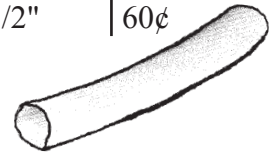
## EPDM Suction Hose w/ Poly Spiral Braid (Chemical)

I.D. Size	Price/Foot
1"	\$2.30
1-1/4"	\$2.74
1-1/2"	\$3.28
2"	\$4.00
3"	\$8.70



## EVA Ammonia and Chemical Hose

3/8"	48¢
1/2"	60¢



# Clamps

## T-Bolt Hose Clamps



- Stainless steel band
- 360° sealing surface

### Hose:

1-1/2" .....	\$3.80
2" .....	\$3.95
3" .....	\$4.65

## Stainless Steel Worm Driven Hose Clamps

Hose Size	Part No.	Price
3/8"	M6	65¢
1/2"	6	65¢
5/8"	12	80¢
3/4"	12	80¢
1"	16	90¢
1¼"	20	90¢
1½"	28	95¢
2"	32	95¢



## Hose Clamp



## Hose Barb Tee



Size	Part No.	Price
1/4" x 1/4" x 1/4"	TT9444	90¢
3/8" x 3/8" x 3/8"	TT9666	90¢
1/2" x 1/2" x 1/2"	TT9888	90¢
1/2" x 1/2" x 3/8"	TT9688	\$1.00
1/2" x 1/2" x 3/4"	TT91288	\$1.60
5/8" x 5/8" x 5/8"	TT9101010	\$1.00
3/4" x 3/4" x 3/4"	TT9121212	\$1.15
1" x 1" x 1"	TT9161616	\$1.90
1-1/4" x 1-1/4" x 1-1/4"	TT9202020	\$3.60
1-1/2" x 1-1/2" x 1-1/2"	TT9242424	\$4.80
2" x 2" x 2"	TT9323232	\$11.20

## NOZZLE BODIES



### Hose Barb Nozzle Body Tee

	Part No.	Price
3/8" Hose	TO1EL	\$1.40
1/2" Hose	TO3EL	\$1.20

## NOZZLE CAPS



### Adapter Nozzle Cap Thread x 1/4" FNPT

Size	Part No.	Price
Adapter	TO3AD	\$1.40



### Nozzle Cap (Swivel Nut)

Nozzle Cap	TO3CA	40¢
------------	-------	-----



### Swivel Barb (fits Nozzle Cap)

3/8"	T3638	70¢
1/2"	T3612	70¢

## HOSE INSERTS

### Hose Menders



Size	Part No.	Price
1/4"	TC7044	60¢
3/8"	TC7066	60¢
1/2"	TC7088	60¢
5/8"	TC71010	65¢
3/4"	TC71212	80¢
1"	TC71616	\$1.50
1-1/4"	TC72020	\$2.40
1-1/2"	TC72424	\$2.60
2"	TC73232	\$6.40
3"	TC74848	\$18.60

### Hose Barb Nozzle Body Straight



3/8" Hose Barb	TO1ST	95¢
1/2" Hose Barb	TO3ST	1.10

### Hose Barb Nozzle Body Tee



3/8" Hose	TO1TE	\$1.25
1/2" Hose	TO3TE	\$1.30

## Upper and Lower Clamp and Screw



Part No.	Price
AA111-SQ-1	\$2.90
AAA111-SQ-1-1/4	\$2.90



Part No.	Price
AAA111-3/4	\$2.70
AAA111-1	\$2.70

## QJ 360 Series ....\$13<sup>85</sup>

w/ hose shank

- ~ Multiple nozzle body available in a 3-, 4-, or 5-nozzle body
- ~ Specify hose size and single- or double-shank



QJ364  
w/ hose shank



QJ363  
for wet boom

## QJ 360 Series for Wet Booms ....\$11<sup>10</sup>

Available for 3/4" and 1" pipe

## 24230 Triple Nozzle Body.... \$15<sup>25</sup>

Specify hose size and single- or double-shank



24230-2

## 193 Series.... \$7<sup>40</sup>

The diaphragm check valve is located below the boom mount.

Specify hose size and single- or double-shank



19350

## 222 Series..... \$5<sup>90</sup>

The diaphragm check valve is located on top of the boom mount.

Specify hose size and single- or double-shank



22252

## 186 Series.....\$2<sup>90</sup>

QuickJet Nozzle Body

Specify hose size and single- or double-shank



18636

## QJ Vari-Spacing Clamps....\$1<sup>95</sup>

QJ111 Round Clamps available in 1/2, 3/4, 1, 1-1/4

QJ111SQ Square Clamps available in 3/4, 1, 1-1/4, 1-1/2

**\*\*Be sure to specify round or square, and size**



QJ111



QJ111SQ

## Diaphragms



CP21953-EPR Diaphragm EPDM Rubber 60¢







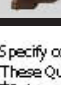
CP21953-VI Diaphragm Viton \$1.25

# CAPS / QuickJet Boom Component / CAPS

(color charts adapted from teejet.com)

## Color Code

1	2	3	4	5	6	7	8	9	10
Black	White	Red	Blue	Green	Yellow	Brown	Orange	Gray	Violet

QUICK TEEJET CAPS	PART NUMBER		FOR USE WITH FLAT SPRAY TIPS 300 PSI (20 BAR) MAXIMUM PRESSURE	
	QUICK TEEJET CAP ONLY	QUICK TEEJET CAP & SEAT GASKET SET		
	CP25611-1-NY	25612-1-NYR	<b>TeeJet Flat Spray Tips (Smaller Capacities)</b> TP Standard -0067 Thru -08 XR -01 Thru -08 DG TeeJet® TT Turbo TwinJet® A/R TeeJet® OC TeeJet® -01 Thru -08	90¢
	CP25609-1-NY	25610-1-NYR	<b>TeeJet Flat Spray Tips (Larger Capacities)</b> TP Standard -10 Thru -20 XR -10 Thru -15	90¢
	CP25597-1-NY	25598-1-NYR	TJ TwinJet® AITeeJet® & AIB TeeJet® SJ-3 StreamJet® DGTwinJet® Turbo TeeJet Induction®	90¢
	CP25595-1-NY	25596-1-NYR	<b>TeeJet Flat Spray Tips (Smaller Capacities)</b> Tips can be positioned in choice of two spray plane directions—parallel or perpendicular to wings of Quick TeeJet cap.	90¢
	CP25599-1-NY	25600-1-NYR	<b>Turbo HoodJet®</b> VisiFlo® Spray Tip TK-VS HoodJet® VisiFlo Spray Tip Locating Nib	90¢
	CP25607-1-NY	25608-1-NYR	TK HoodJet® FL FullJet® TX ConeJet® TG Full Cone Hose Shank	90¢
	CP25607-9-PP+T	25608-9-PP+T	CP18999-EPR (EPDM standard) CP18999-VI (Nylon optional) Used with DC-Core Inserts and CP4916 Flow Regulators (Insert Core into Seal)	90¢

\*Specify color code (see chart). Unless otherwise specified, a yellow (6) cap will be supplied. Violet (10) only available in CP25611 and CP25597 Nylon caps.

†These Quick TeeJet caps available only in black.

††Polypropylene Quick TeeJet caps available only in gray.

## Quick TeeJet Cap



CP19438-EPR  
(EPDM Standard)

CP19438-VI  
(Nylon Optional)

The Quick TeeJet caps are designed with grooves that fit locating lugs on the nozzle body. Caps are made of Nylon and are available for use with all TeeJet® spray tips. Maximum operating pressure of 300 PSI (20 bar).

## How to order:

For cap and seat gasket set, specify set number and color code.

Example: 25612-3-NYR

For cap only, specify part number and color code.

Example: CP25597-4-NY

For seat gasket, specify part number.

Example: CP19438-EPR

## Adapter Cap



Quick TeeJet Outlet Adapter with EPDM Seat Gasket, Black

Part No.

QJ4676-1/4-NYR

\$1.75

## Shut-Off Cap



Quick TeeJet Shut-Off Cap and Seal Gasket Set

Part No.

19843-NYR

\$1.70

## Cap Gaskets

40¢

## Typical Applications:

- Boomless field spray applications
- Roadside and right-of-way applications
- End row spraying

## Features:

- Unique orifice geometry produces wide spray pattern while maintaining superior distribution across entire width
- Pre-orifice design minimizes drift
- Extra wide spray pattern--up to 18.5 feet--using a single nozzle

## Boomless Tips





**Tip sprays one direction.** Use an L and an R tip to spray each direction and double width.

TIPO	PSI	DROPSIZE	CAPACITY ONE NOZZLE IN GPM	SPRAY WIDTH "W" (FEET)		HEIGHT "Y" = 24"										HEIGHT "Y" = 36"									
						GPA FOR ONE NOZZLE					GALLONS PER 1000 SQ. FT.					GPA FOR ONE NOZZLE					GALLONS PER 1000 SQ. FT.				
				24" HEIGHT	36" HEIGHT	4 MPH	6 MPH	8 MPH	10 MPH	15 MPH	20 MPH	2 MPH	3 MPH	4 MPH	5 MPH	4 MPH	6 MPH	8 MPH	10 MPH	15 MPH	20 MPH	2 MPH	3 MPH	4 MPH	5 MPH
(B)1/4XP10R	20	UC	0.71	8.5	10.0	10.3	6.9	5.2	4.1	2.8	2.1	0.47	0.32	0.24	0.19	8.8	5.9	4.4	3.5	2.3	1.8	0.40	0.27	0.20	0.16
(B)1/4XP10L	30	UC	0.87	10.0	11.0	10.8	7.2	5.4	4.3	2.9	2.2	0.49	0.33	0.25	0.20	9.8	6.5	4.9	3.9	2.6	2.0	0.45	0.30	0.22	0.18
(B)1/4XP10L	40	UC	1.00	11.0	12.5	11.3	7.5	5.6	4.5	3.0	2.3	0.52	0.34	0.26	0.21	9.9	6.6	5.0	4.0	2.6	2.0	0.45	0.30	0.23	0.18
\$36 <sup>80</sup>	50	UC	1.12	12.5	13.5	11.1	7.4	5.5	4.4	3.0	2.2	0.51	0.34	0.25	0.20	10.3	6.8	5.1	4.1	2.7	2.1	0.47	0.31	0.24	0.19
	60	UC	1.22	13.0	14.5	11.6	7.7	5.8	4.6	3.1	2.3	0.53	0.35	0.27	0.21	10.4	6.9	5.2	4.2	2.8	2.1	0.48	0.32	0.24	0.19
(B)1/4XP20R	20	UC	1.42	9.0	11.0	19.5	13.0	9.8	7.8	5.2	3.9	0.89	0.60	0.45	0.36	16.0	10.7	8.0	6.4	4.3	3.2	0.73	0.49	0.37	0.29
(B)1/4XP20L	30	UC	1.75	11.5	12.0	18.8	12.6	9.4	7.5	5.0	3.8	0.86	0.57	0.43	0.34	18.0	12.0	9.0	7.2	4.8	3.6	0.83	0.55	0.41	0.33
(B)1/4XP20L	40	UC	2.00	13.5	14.0	18.3	12.2	9.2	7.3	4.9	3.7	0.84	0.56	0.42	0.34	17.7	11.8	8.8	7.1	4.7	3.5	0.81	0.54	0.40	0.32
\$36 <sup>80</sup>	50	UC	2.25	14.5	15.0	19.2	12.8	9.6	7.7	5.1	3.8	0.88	0.59	0.44	0.35	18.6	12.4	9.3	7.4	5.0	3.7	0.85	0.57	0.43	0.34
	60	UC	2.50	15.0	16.0	21	13.8	10.3	8.3	5.5	4.1	0.94	0.63	0.47	0.38	19.3	12.9	9.7	7.7	5.2	3.9	0.89	0.59	0.44	0.35
(B)1/2XP40R	20	UC	2.87	11.0	12.0	32	22	16.1	12.9	8.6	6.5	1.5	0.99	0.74	0.59	30	19.7	14.8	11.8	7.9	5.9	1.4	0.90	0.68	0.54
(B)1/2XP40L	30	UC	3.53	13.0	14.5	34	22	16.8	13.4	9.0	6.7	1.5	1.0	0.77	0.62	30	20	15.1	12.1	8.0	6.0	1.4	0.92	0.69	0.55
(B)1/2XP40L	40	UC	4.00	14.0	15.5	35	24	17.7	14.1	9.4	7.1	1.6	1.1	0.81	0.65	32	21	16.0	12.8	8.5	6.4	1.5	0.97	0.73	0.58
\$43 <sup>80</sup>	50	UC	4.55	15.0	16.0	38	25	18.8	15.0	10.0	7.5	1.7	1.1	0.86	0.69	35	23	17.6	14.1	9.4	7.0	1.6	1.1	0.81	0.64
	60	UC	5.00	16.0	17.5	39	26	19.3	15.5	10.3	7.7	1.8	1.2	0.89	0.71	35	24	17.7	14.1	9.4	7.1	1.6	1.1	0.81	0.65



# Spraying Systems Co. TeeJet Tips and Nozzles

Tips and Nozzles		Size	Orifice Insert/Tip Body Material	Example Tip No.	Price each
	XR TeeJet Extended Range Tips (Tapered Flat Spray)	-01 and larger	Stainless Steel/ Celcon	XR8001-VS	\$4.30
	AIXR Air Induction XR Flat Spray	all sizes	UHMWPE Polymer (110° only)	AIXR11004-VP	\$4.45
	Turbo TeeJet Spray Tip (Wide Angle Flat Spray)	all sizes	Polymer (110° only)	TT11001-VP	\$4.05
	Turbo TeeJet Induction Air Induction Spray Tip	all sizes	Polymer (110° only)	TTI11004-VP	\$6.90
	AI Turbo TwinJet Twin Flat Spray Tip	all sizes	Polymer (110° only)	AITTJ60-11004-VP	\$5.00
	TwinJet Spray Tips (Twin Tapered Flat Spray)	all sizes	Stainless Steel/ Celcon	TJ60-8003-VS	\$7.50
	Turbo FloodJet Spray Tips (Wide Angle Flat Spray)	all sizes	Stainless Steel/ Celcon w/ Polymer Pre-Orifice	TF-VS4	\$8.10
	A1 TeeJet Spray Tips (Tapered Flat Spray) VisiFlo Color Coded	-015 thru -10	Stainless Steel/ Celcon	AI110015-VS	\$8.15
	TeeJet Orifice Plates	all sizes	Stainless Steel	CP4916-49	\$2.30
	Blank Disc	one size fits all	Polypropylene		35¢

	Nozzle Strainers			Check Valve Strainers			
	Part No.	Descr.	Price	Part No.	Descr.	Price	
	SN 50	50 Mesh	90¢	4193A-PP-50	50 Mesh	\$2.90	
	SN 100	100 Mesh	90¢	4193A-PP-100	100 Mesh	\$2.90	

# TriggerJet Spray Gun

## Features:

- ◆ 15" extension wand
- Includes ConeJet spray tips with a 30° offset
- Trigger lock permits locking gun in an open position for continuous flow
- Replaceable internal working components
- Maximum operating pressure--100 psi (7 bar)
- 3/8" hose shank connection
- Accepts all standard Spraying Systems Co. spray tips and tip strainers
- Lightweight design for use with backpack, canister or other low-pressure sprayers



**\$12<sup>50</sup>**

## No. 5500 Adjustable Tips

Polypropylene or Brass



Adjustable ConeJet Tips  
fit standard TeeJet Spray  
Nozzle body.

#5500-X\_\_ Brass Adjustable Tip..... \$14.80  
#5500-PPB-X\_\_ Polypropylene Adjustable Tip.. \$6.60

## Spray Gun



**#1700-02-013**

13" Super-Jet Aluminum Trigger  
Spray Gun with thermal plastic  
handle and dripless shut-off at  
nozzle.

1" aluminum barrel, 800 psi,  
8 GPM and #5 hardened stainless  
steel D-disc.  
1/2" female pipe thread.

**#1700-02-013 TriggerJet**

**\$39<sup>90</sup>**

## TriggerJet #22670 Spray Gun



22670 Trigger Jet

### 22670-PP Includes:

- ◆ 22650 TriggerJet Spray Gun (1/4" FNPT only)
- ◆ 8079 50 Mesh Strainer
- ◆ 5500 PPB-8X Adjustable ConeJet Spray Tip
- ◆ Straight and 45° adapter
- ◆ Maximum Operating Pressure, 150 psi

Trigger Jet No.	Extension Length	List Price
22670-PP-15-1/4	15"	\$32.30

**The 22670 TriggerJet spray gun kit** combines the 22650 TriggerJet spray gun with an extension wand and the items listed in features. Maximum pressure rating 150 psi (10 bar).

### Features:

- 22650 TriggerJet spray gun with a 1/4" BSPT (F) thread inlet connection
- Trigger lock permits locking gun in an open position for continuous flow (optional)
- #22665, 15" extension wand
- 8079-50-PP tip strainer
- 5500-PPB-X8-VI adjustable ConeJet spray tip with Viton® o-ring
- CP22673-PP 45° and CP22664-PP straight adapters (other capacities available)
- Accepts all standard Spraying Systems Co. spray tips and tip strainers

## RECTANGULAR TANKS



**20 Gallon Tank**  
14" x 28" x 12"  
**\$94<sup>22</sup>**

**12 Gallon Tank**  
14" x 18" x 12"  
**\$71<sup>22</sup>**

## POLY TANKS

### SPOT SPRAYER TANKS



**15 Gallon**  
14" x 30" x 14"  
**\$59<sup>40</sup>**

**25 Gallon**  
18" x 34" x 18"  
**\$79<sup>27</sup>**



**2½-Gallon Rectangle**  
7" x 15" x 14"  
**\$43<sup>15</sup>**

### CONE BOTTOM TANKS

**5 Gallon Square**  
11" x 11" x 20"  
**\$66<sup>79</sup>**

**10 Gallon Square**  
13" x 13" x 21"  
**\$92<sup>58</sup>**



**60 Gallon**  
24" x 36" x 26"  
**\$106<sup>54</sup>**

**40 Gallon**  
24" x 36" x 19"  
**\$85<sup>60</sup>**



**3½-Gallon Round**  
11" x 16"  
**\$44<sup>10</sup>**

## THREAD SEALANTS



**Teflon Tape, 1/2" x 520"**  
**\$1.20**



**Teflon Thread Sealant**

4 oz. can ..... \$14.90  
8 oz. can ..... \$25.90  
2 oz. tube ..... \$ 7.80

## HOTLINE

### Defoamer/Anti-Foaming Agent



Prevents foam over and foam damage to chemical when filling/mixing.  
Spray to knock down foam or pretreat to prevent production

1 gallon ..... **\$39<sup>00</sup>**

## NEUTRA-CHEM

### Tank and Equipment Cleaner

Designed for cleaning tanks, lines and nozzles to remove pesticide, herbicide and fertilizer residues.



2 lb. container ... **\$12<sup>90</sup>**





# Inductors

Inductors	Tank w/ Stand	Tank, Stand, Valves, and Rinse Nozzle
15 gallon	\$160 <sup>00</sup>	\$255 <sup>00</sup>
30 gallon	\$192 <sup>00</sup>	\$287 <sup>00</sup>
60 gallon	\$320 <sup>00</sup>	\$415 <sup>00</sup>

## Blow Molded Inductor Tank Sets

Tank Sets	Tank w/ poly legs	Tank, Legs, Valves, and Rinse Nozzle
35 gallon	\$185 <sup>00</sup>	\$280 <sup>00</sup>
60 gallon	\$214 <sup>00</sup>	\$309 <sup>00</sup>



Installs on the discharge side of a pump, which keeps pump and water tank free of chemical contamination.

Plumbed to bypass inductor for faster transferring of water only.

2" barbed fittings, standard

## Venturi Kit

\$348<sup>00</sup>



## Measuring Pitcher

128 oz.

\$18.90



## Boom Wheel Kit

\$195<sup>00</sup> / pair

Applicable to most spray booms.

