



Hernando Beach 2016-2020

Vision & Business Development Plan



**Hernando Beach North
Direct Gulf Access**

Weeki Wachee Preserve

Boat Lift

**Hernando Beach
Central —
Indirect Gulf Access**

**Hernando Beach South
Indirect Gulf Access**

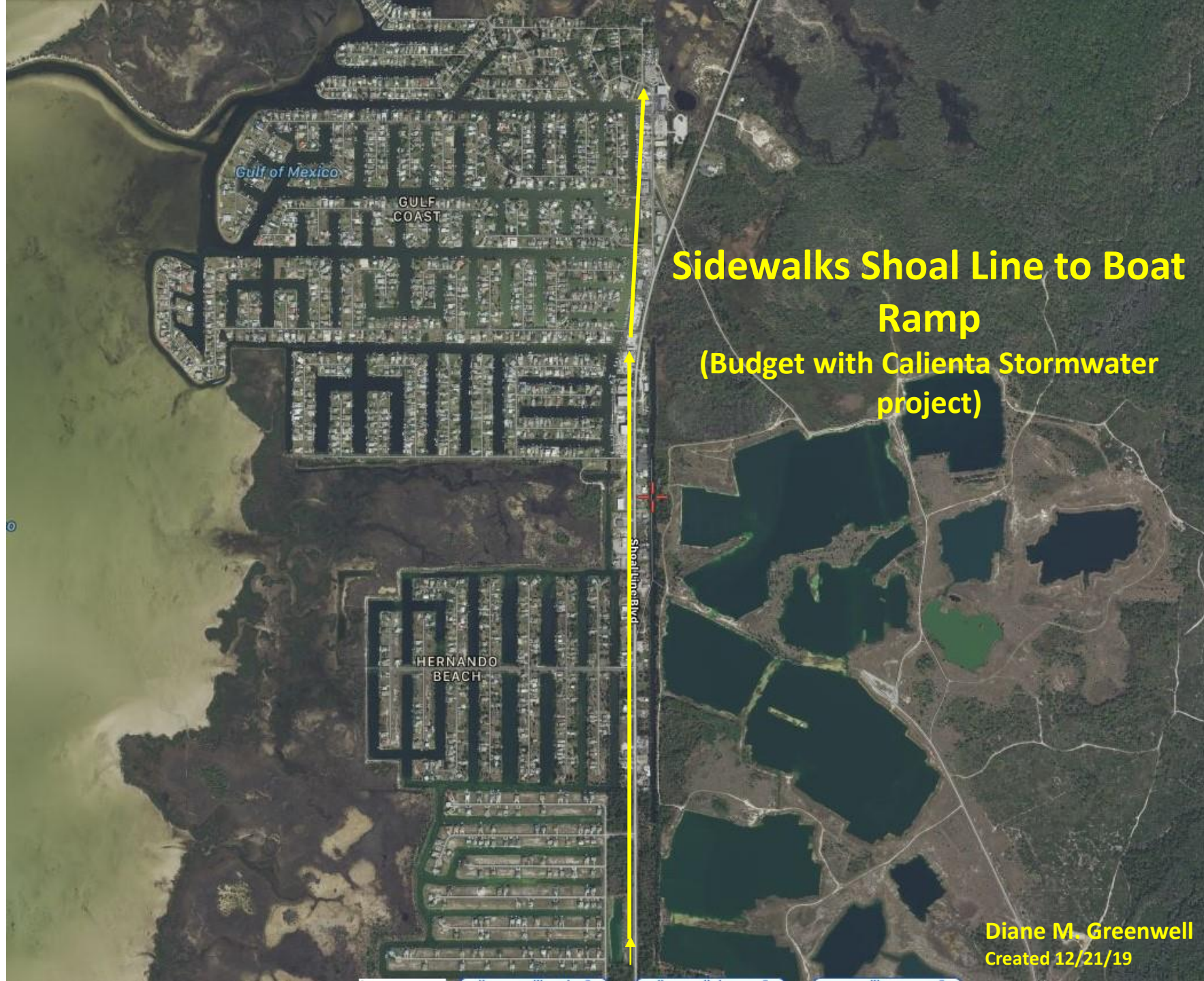
**Diane M. Greenwell
Created 12/21/19**

Cross Walks

Reduce Speed HBS
to North of Water
Tower - 30 mph
And make Golf Cart
Friendly

Diâne M. Greenwell
Created 12/26/19





Gulf of Mexico

GULF
COAST

**Sidewalks Shoal Line to Boat
Ramp
(Budget with Calienta Stormwater
project)**

Shoal Line Blvd

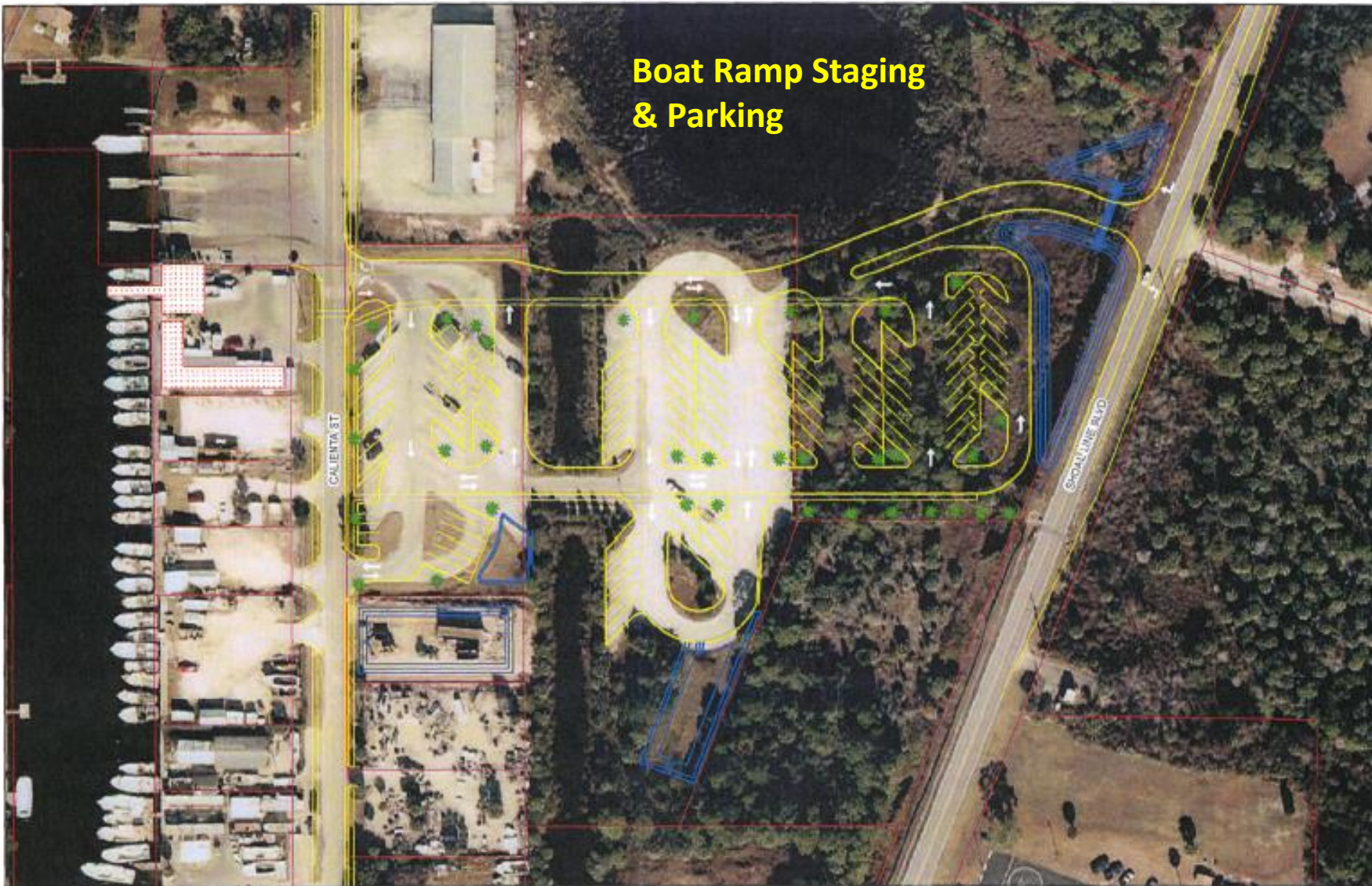
HERNANDO
BEACH

Diane M. Greenwell
Created 12/21/19



**Stormwater Run Off
Calienta
(Budgeted for 2020)**

**Diane M. Greenwell
Created 12/21/19**



Boat Ramp Staging
& Parking

Hernando Beach Boat Parking Proposed Expansion

Scale - Not To Scale
Mapped by - Dept. of Public Works/Engineering Div.
Map Date - 6/15/2016



Hernando County Geographic Information System (GIS)
Inherent Legal Disclaimer

"The information in this database or as represented upon a digital or hard copy format is compiled and/or generated for internal County purposes, is not necessarily official, and may not reflect the most recent changes. Accordingly, users of this information in all its uses and forms, and Hernando County hereby disclaims any liability for claims, damages, injury, or loss of any kind resulting from use of, or reliance upon, the information herein for any purpose whatsoever."

5/27/16 Brian Malmberg, Mark Nuttman, Fred O'Leary, Public Works Project Meeting

**Boardwalk
Behind Commercial
Businesses on East Side of Shoal
Line Blvd. Connecting with
Boardwalk to Linda Pedersen
Park**



Diane M. Greenwell
Created 12/21/19



**Crepe Myrtles or
other Florida
native flowering
shrubs along
Shoal Line Blvd.
for Color**




Commercial Marine CM-2

(All commercial
Fishing Vessels over 26',
Commercial
Processing and/or Commercial
Fishing Activity) must stay north
of
Flamingo Blvd.

Diane M. Greenwell
Created 12/21/19



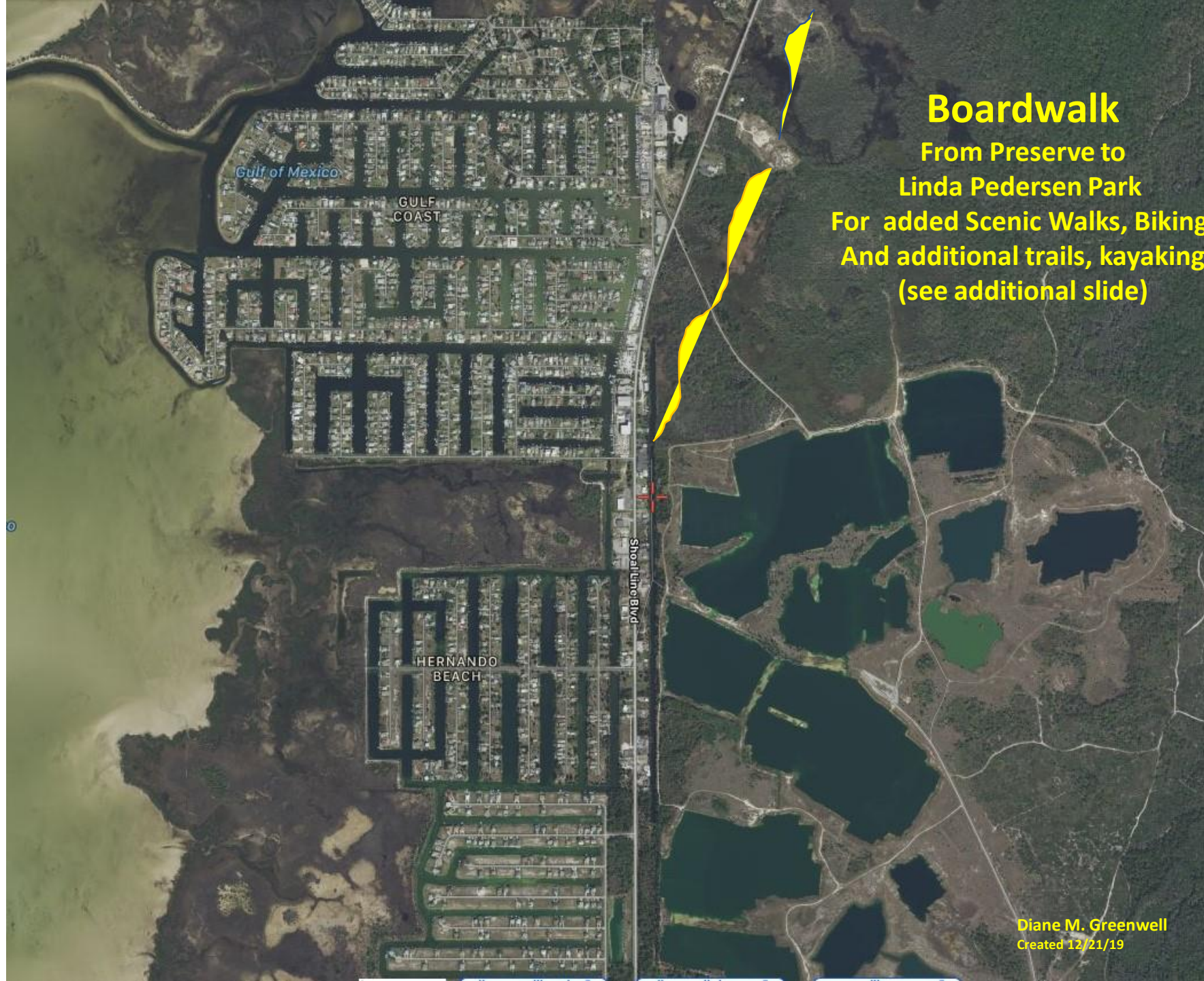
**Commercial Recreational
Charters CM-1
Restricted size, usage,
hours of operation**

An aerial photograph of a coastal area. On the left is the Gulf of Mexico. The land is divided into several sections: 'GULF COAST' at the top, 'HERNANDO BEACH' in the middle, and a residential area at the bottom. A road labeled 'Shoal Line Blvd' runs vertically through the center. To the right of the road is a large area with several ponds and some buildings. A red arrow points to a specific location on Shoal Line Blvd. A yellow text box is overlaid on the right side of the image.

Change rear and side setback requirements on Commercial Properties on Shoal Line Blvd. & Calienta Street to allow maximum use of properties.



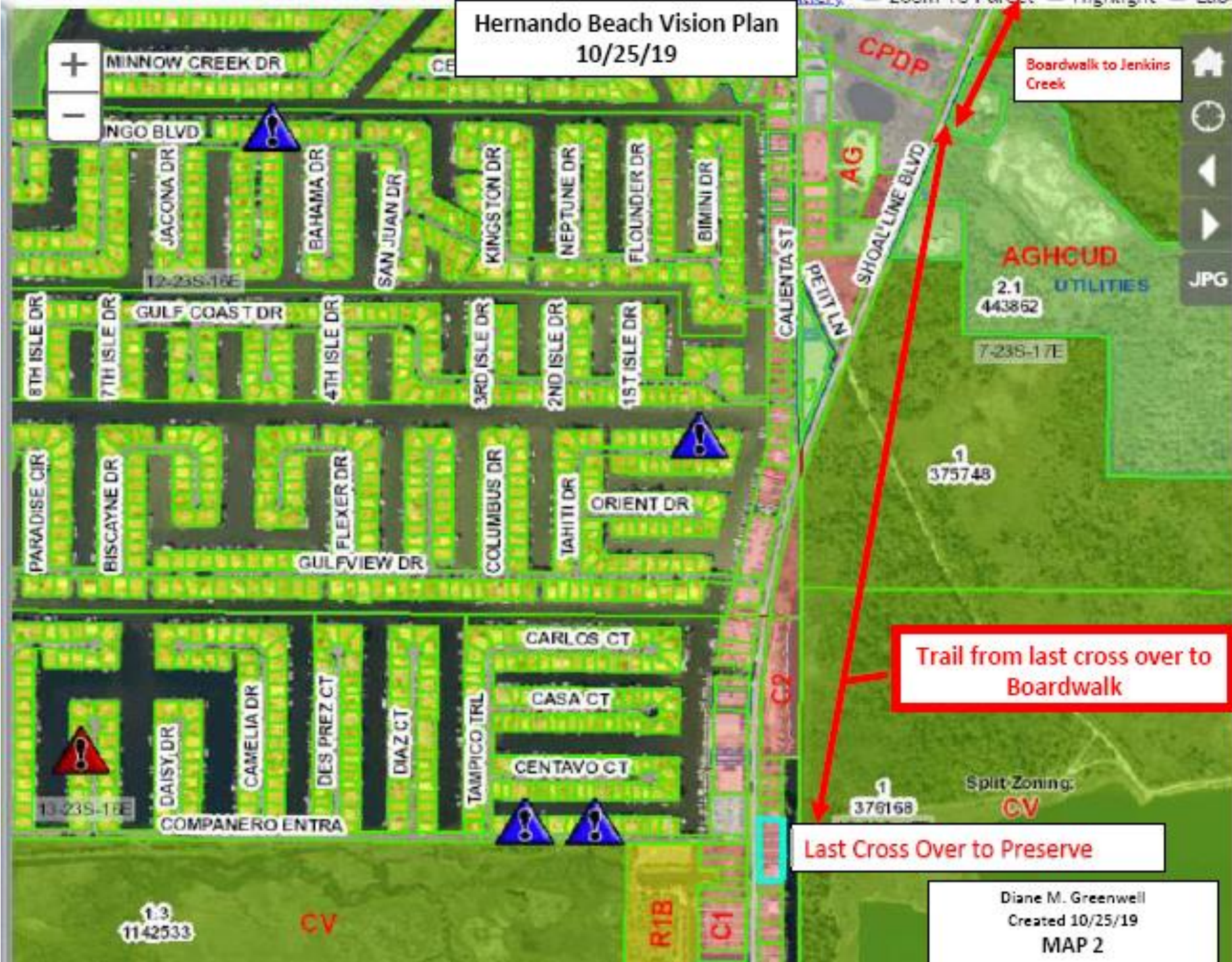
**Dedicate the 56 acre
Water Tower Property
To Hernando Beach for
Use as a park: Bocce
Ball, Dog Park, Volley
Ball, Parking for Preserve**



Boardwalk

From Preserve to
Linda Pedersen Park
For added Scenic Walks, Biking,
And additional trails, kayaking
(see additional slide)

Hernando Beach Vision Plan
10/25/19



Trail from last cross over to Boardwalk

Last Cross Over to Preserve

Diane M. Greenwell
Created 10/25/19
MAP 2

Hernando Beach Vision Plan
10/25/19



Boardwalk from Water Tower to
Jenkins Creek – 1 mile

Diane M. Greenwell
Created 10/25/19
MAP 3



**Waterways & Marine Research Center
With University of Florida or Aquatic Preserve
For Water Testing, Weather Monitoring,
Education, and Training**



Gulf of Mexico

GULF COAST

HERNANDO BEACH

Shoal Line Blvd

Trolley Bus
Scenic Highway (Shoal Line Blvd)
Pine Island
Bay Port
Hernando Beach
Weeki Wachee
Mary's Fish Camp

Diane M. Greenwell
Created 12/21/19

