



NATIONAL SCIENCE OLYMPIAD-2015

Model Paper-1

Class: VII
 Time: 60 Minutes

Total Marks: 60
 Total No. of Questions = 60 (Each Question Carries-1 Marks)

I. Choose the Correct Answer among the given Options and write it in the given Answer Sheet

1. Which of the following food items is not a milk product?

- A. Cream B. Cheese C. Chappatti D. Butter

2. Which of the following is not an insectivorous?

- A. Crocodile B. Frog C. Lizard D. Snake

3. Which of the following is an edible shoot?

- A. Potato B. Radish C. Carrot D. Apple

4. A house lizard eats

- A. Oil cakes B. Hay C. Small insects D. Grains

5. Find the odd one out?

- A. Milk B. Apple C. Carrot D. Sugar

6. A carnivore eats:

- A. Sprouted seeds B. Milk C. Green leaves D. Flesh of other animals

7. The food of the butterfly is:

- A. Small insects B. Necta C. Sprouted seeds D. Un sprouted seeds

8. Deer eats only plant products and thus it is called:

- A. Herbivores B. Carnivores C. Omnivores D. None of these

9. _____ is a water soluble vitamin where as _____ is fat soluble.

- A. vitamin B, vitamin C B. vitamin B, vitamin A
 C. vitamin D, vitamin E D. None of these

10. Which of the following are good sources of carbohydrates?

- A. Milk, egg, meat B. Green leafy vegetables
 C. Cereals, sugar D. None of these

11. Translucent paper test is done to show the presence of

- A. Proteins B. Carbohydrates C. Vitamins D. None of these

12. Which of the following is true?

- A. During malnutrition ORS solution should be given
 B. Proteins are good source of energy
 C. Scurvy is caused due to deficiency of vitamin C
 D. None of these

13. For strong bones and teeth we need

- A. Vitamin A B. Vitamin D C. Vitamin E D. Vitamin K

14. Cereals are —

- A. Grains mostly obtained from grasses. B. Vegetables
C. Animal products D. None of these

15. Protein is called

- A. Energy giving food. B. Body building food.
C. Protective food. D. Roughage

16. Radha was testing a food item. She took the sample in a test tube and added iodine to it. On seeing the colour she inferred that the food item contains carbohydrate. What happened in the test tube

- A. The test tube became very hot to touch
B. The colour of solution in test tube changed to blue black
C. A foul smelling gas is released
D. None of these

17. Which is a protein deficiency disease?

- A. Osteomalacia B. Kwashiorkar C. Night Blindness D. None of these

18. Which of the following cloth is suitable to wear while lighting Diwali Diyas?

- A. Cotton. B. Nylon. C. Polyester. D. Rayon.

19. Rearing of silk worm is called-

- A. Weaving. B. Spinning. C. Ginning D. Sericulture

20. The process of obtaining jute fibres from stem is called

- A. Ginning. B. Retting. C. Bobbin. D. Weft

21. Which is the correct statement?

- A. All synthetic fibres are rough to touch.
B. Cotton is grown in alluvial soil.
C. Polyester absorbs more water than cotton.
D. Silk and wool both are obtained from animals.

22. Which of the following is a terrestrial habitat?

- A. Air B. Forest C. River D. Pond

23. Which of the following is false?

- A. India cultivated the cotton first B. Jute is obtained from stem
C. Rayon and Nylon are plant fibres D. None of these

24. The habitat consists of biotic component i.e. _____ and the Abiotic component. i.e. _____

- A. Living, non living B. Nonliving, living C. Nonliving D. None of these

25. Which of the following is opaque?

- A. Glass B. Butter paper C. Wood D. None of these

26. All materials

- A. Occupy space B. Have mass
C. Can be felt by one or more of our senses D. All are correct

27. Which of the following is a wrong match?

- A. Glass-Translucent B. Wood opaque
C. Butter paper - Translucent D. None of these

28. Which of the following is odd one?

- A. Gold B. Silver C. Iron D. Oxygen

29. Which of the following is a metal which is liquid?

- A. Sodium B. Mercury C. Iron D. None of these

30. Which is the correct statement?

- A. Metals are transparent while non metals are opaque
 B. Wood have lusture while iron is dull
 C. Oil floats on water while dry leaves sink
 D. None of these

31. A solid is said to be amorphous when:

- A. It has definite geometrical shape B. It has no geometrical shape.
 C. It has definite colour. D. It has no definite colour

32. When a body moves along a straight line path it is said to be in

- A. Curvilinear motion B. Rectilinear C. Translator Motion D. None of these

33. Which of the following is a false statement?

- A. Cream is separated from milk by churning process.
 B. Iron is a magnetic substance
 C. Pond water is a mixture.
 D. Sharbat is a pure substance

34. A _____ is used for separating insoluble solid particles from a liquid.

- A. Piece of muslin cloth. B. Filter paper
 C. Both (a) and (b). D. None of these

35. Which of the following is a true statement?

- A. Different substances have different properties.
 B. Aluminum is a magnetic substance.
 C. Butter is separated from milk by sedimentation.
 D. Distilled water is obtained by filtration.

36. The property which forms the basis of sieving is –

- A. Difference in weight. B. Difference in size.
 C. Difference in shape. D. Difference in colour

37. A mixture of sand and iron fillings can be separated by

- A. Magnetic separation B. Hand picking
 C. Winnowing D. None of these

38. The components of brass are –

- A. Copper and zinc. B. Copper and iron.
 C. Carbon, hydrogen and oxygen. D. Carbon and sulphur

39. Which of the following is periodic change?

- A. Burning of candle B. Melting of ice
 C. Sun set and sun rise D. None of these

40. Which of the following is chemical change?

- A. Mixing sugar in water B. Photosynthesis
 C. Melting of wax D. None of these

41. Which of the following is a slow, irreversible and chemical change?

- A. Lightning in the sky
- B. Melting of wax
- C. Formation of manure from dead & decayed material
- D. None of these

42. Which of the following is false?

- A. Bursting of balloon is an irreversible change
- B. Chemical changes are always irreversible
- C. Heart beat is a periodic change
- D. None of these

43. When we can recover a given substance in its original form we say it is as

- A. Slow change
- B. Reversible change
- C. Chemical change
- D. None of these

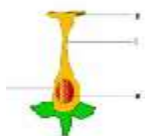
44. The example of changes given in previous question is

- A. Photosynthesis
- B. Stretching of rubber band
- C. Making of curd
- D. None of these

45. Changes can be classified as reversible and irreversible. The given table lists some reversible and irreversible changes. Reversible change Irreversible change Folding a piece of cloth Burning of paper Stretching a rubber band Melting of chocolate Which of the following changes is categorized incorrectly?

- A. Folding a piece of cloth
- B. Stretching a rubber band
- C. Melting of chocolate
- D. Burning of paper

46. Which labelled structure illustrates the part where pollen grains germinate to give pollen tube?



- A. I
- B. II
- C. III
- D. IV

47. In an experiment, Lalit took two pots filled with soil and labelled them as I and II. Then, he took two marigold plants. He removed the roots of one marigold plant and placed it in pot. I. He kept the roots of the other plant intact and placed it in pot II. He watered the two plants regularly and observed for any change.

Which of the following statements regarding plants in pots I and II is correct?

- A. The plant in pot I will die
- B. The plant in pot I will remain healthy
- C. The plants in both pots I and II will die
- D. The plants in both pots I and II will remain healthy

48. Plants that have parallel venation in their leaves are ___i___ and ___ii___ The information in which option completes the given statement?

- A. Wheat, rice
- B. Rice, tulsi
- C. Tulsi, mint
- D. Mint, wheat

49. ___i___ plant has fibrous roots and has ___ii___ venation in the leaves. The information in which row completes the given statement?

- A. Maize, reticulate
- B. Mango, parallel
- C. Maize, parallel
- D. Mango, reticulate

50. Which part of the plant helps in the transportation of food prepared by the leaves to various other parts of the plants body?

- A. Stem
- B. Root
- C. Petal
- D. Stamen

51. The given diagram illustrates the stamen of a flower The structure labelled I represent the

- A. Filament
- B. Anther
- C. Ovary
- D. Style



52. Which of the following plants is an herb?

- A. Mango B. Tomato C. Neem D. Rose plant

53. Plants with soft green stems are called ___i_ . ___ii___ have stem branching near the base The information in which row completes the given statements?

- A. Herb, Shurbs B. Shrubs, Herbs
C. Shrubs, Shrubs D. Herbs, Herbs

54. In birds, the bones of hind limbs are used in

- A. Walking and Perching B. Respiration
C. Flying D. None of these

55. The outer skeleton of a snail is called

- A. Shell B. Cover C. Bone D. None of these

56. The animal that does not have any bone is

- A. Snake B. Fish C. Bird D. None of these

57. Which bone protects the spinal cord & gives support to the whole body?

- A. Backbone B. Ribcage C. Sternum D. none of these

58. The soft parts present in our ear are called _____

- A. Cartilage B. Tendon C. Both D. None of these

59. Which gas is used by plants for photosynthesis?

- A. Oxygen B. Carbon dioxide C. Nitrogen D. None of these

60. Pond is an example of _____habitat.

- A. Aquatic flowing B. Aquatic & stagnant C. Desert D. None of these

Answer Key

1. C 2. A 3. A 4. C 5. A 6. D 7. B 8. A 9. B 10. C 11. D 12. C 13. B 14. A 15. B 16. B 17. B 18. A 19. D 20. B
21. D 22. C 23. C 24. B 25. C 26. D 27. A 28. D 29. B 30. D 31. B 32. B 33. D 34. C 35. A 36. B 37. A 38. A 39. C 40. B
41. C 42. D 43. B 44. B 45. C 46. B 47. A 48. A 49. C 50. A 51. B 52. B 53. B 54. A 55. A 56. D 57. A 58. A 59. B 60. B