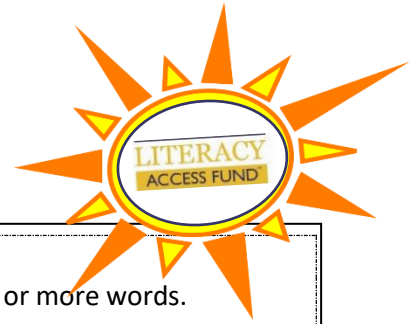


It's Rhyme Time!



A **rhyme** is a repetition of similar sounds (usually the exact same sound) in the final stressed syllable of two or more words.

Example:

It Bit Sit Fit

Say the bold word aloud. Circle the words in the row that rhyme with the word in bold.

1. sun	man	fun	run	can
2. pool	school	cool	hand	tool
3. fan	tan	man	ran	can
4. shell	bell	fall	fell	tell
5. ball	sea	mall	fall	belt

Your turn! Write down 3 words that rhyme with the word in bold in each box below.

hat

1. _____

2. _____

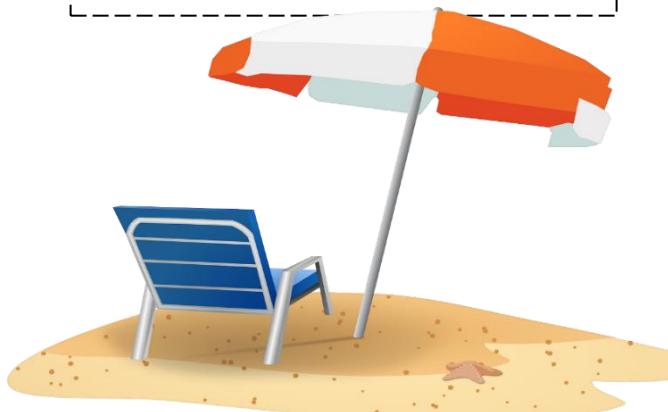
3. _____

can

1. _____

2. _____

3. _____



wet

1. _____

2. _____

3. _____

These worksheets are provided to you by Literacy Access Fund™.

Join Literacy Access Fund™ in its mission to make literacy a possibility for every child, in every community.

Visit www.literacyaccessfund.org to donate today.