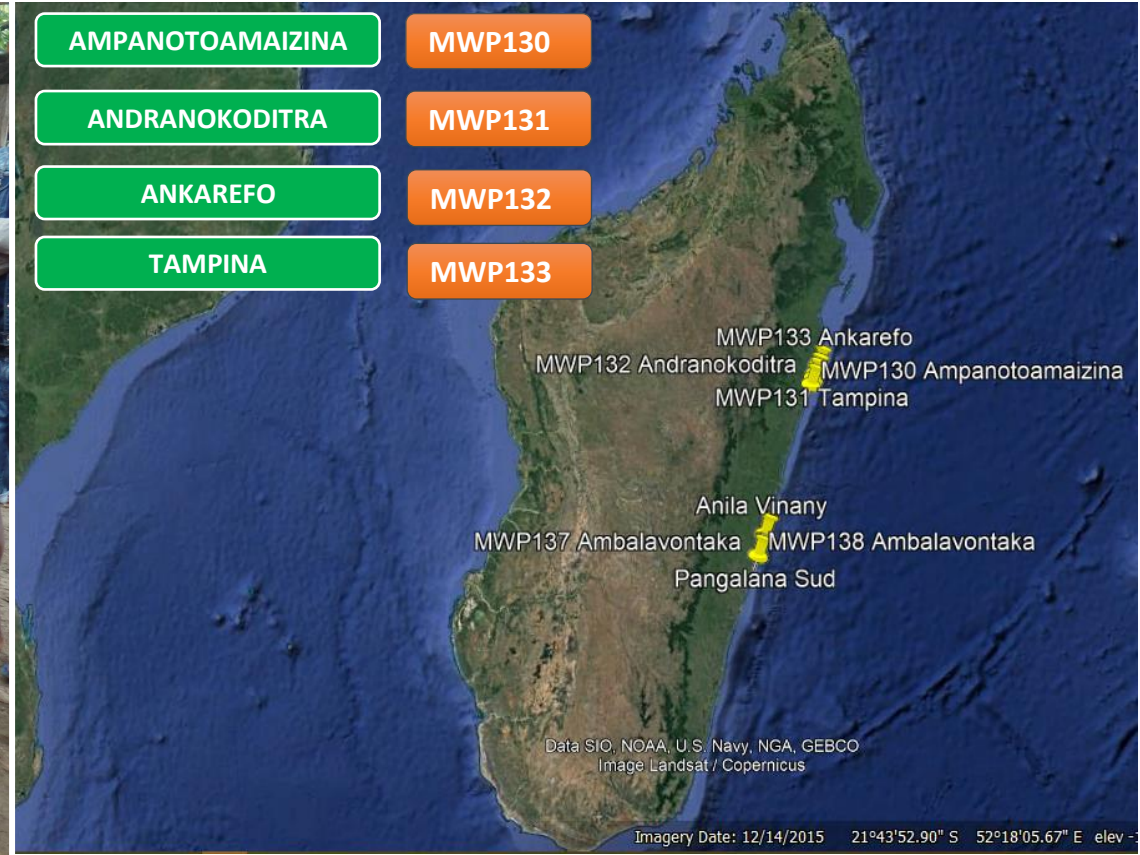




The Madagascar Water Project

PHASE IX Part I Program



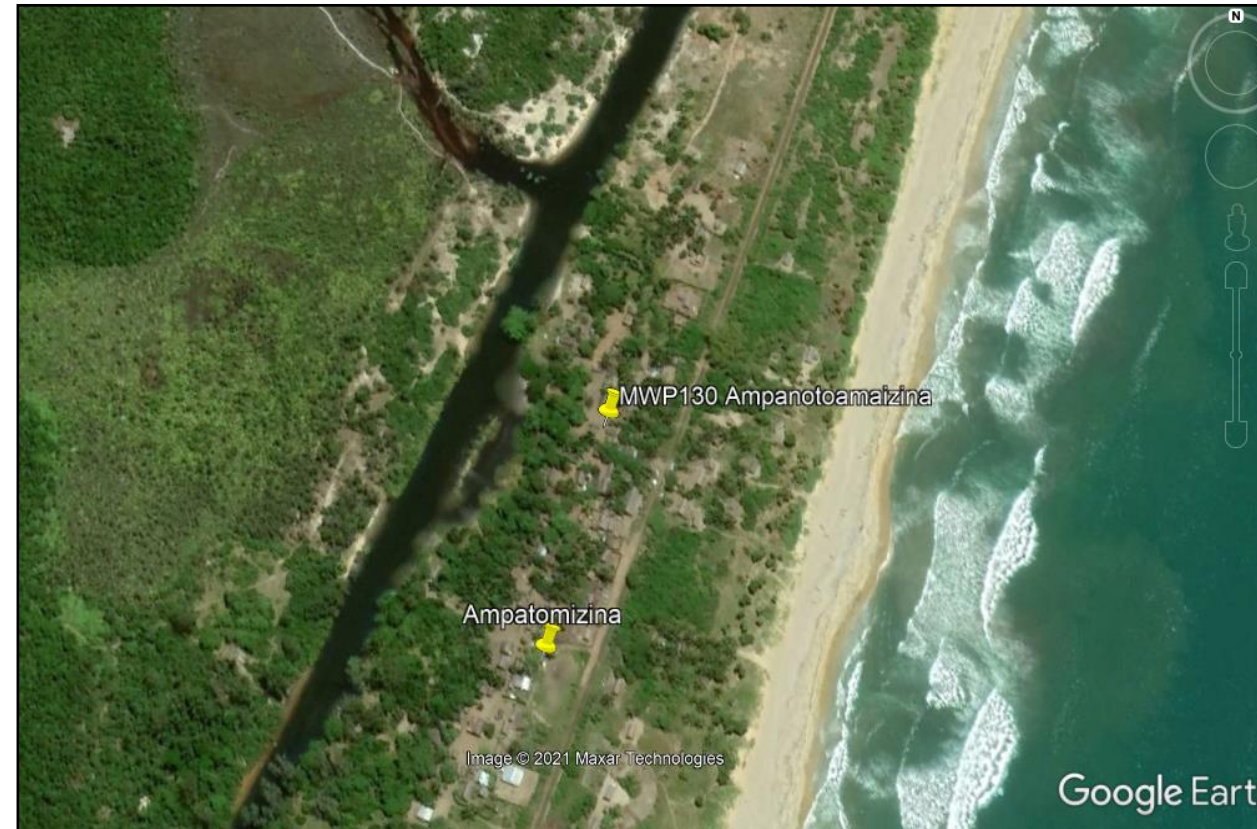
The First Part of the Phase IX Program was conducted in August 2021 in Eastern Madagascar in four villages along the Pangalana Channel. Four wells were drilled in the following villages:

Ampanotoamaizina, Andranokoditra, Ankarefo, and Tampina

This phase of the project provides clean water to an estimated 3000 new recipients.

AMPANOTOAMAIZINA

18°41'43.75"S / 49°12'26.42"E



- Region: Antsinanana
- District: Brickaville
- Commune: Ambinaninony
- Fonkotany: Ampanotoamaizina
- Number of population: 300

- Source of revenue: Fishing, Farming
- Source of water: Pangalana channel
- Existing water infrastructure: Any.
- MWP Well installed: MWP130

- Date of installation: August 2021
- Pump Type: XL Pump
- Pedestal: Standard pump
- Screen / Well Point: Steel
- Pipe: Steel

- WT: 5.0m BHA: WP+3+2+1 BGL: 5.2m
- Flow: 25 liters per minute
- Quality: Fresh

TAMPINA

18°31'28.4"S / 49°16'46.55"E

Returning to Previous View ✕

Backspace will take you to previous views.
Use control-backspace to redo.

Tampina

18°31'28.4"S / 49°16'46.55"E MWP131

Image © 2021 Maxar Technologies
Image © 2021 CNES / Airbus



- Region: Antsinanana
- District: Brickaville
- Commune: Ambinaninony
- Fonkotany: Tampina
- Number of population: 600

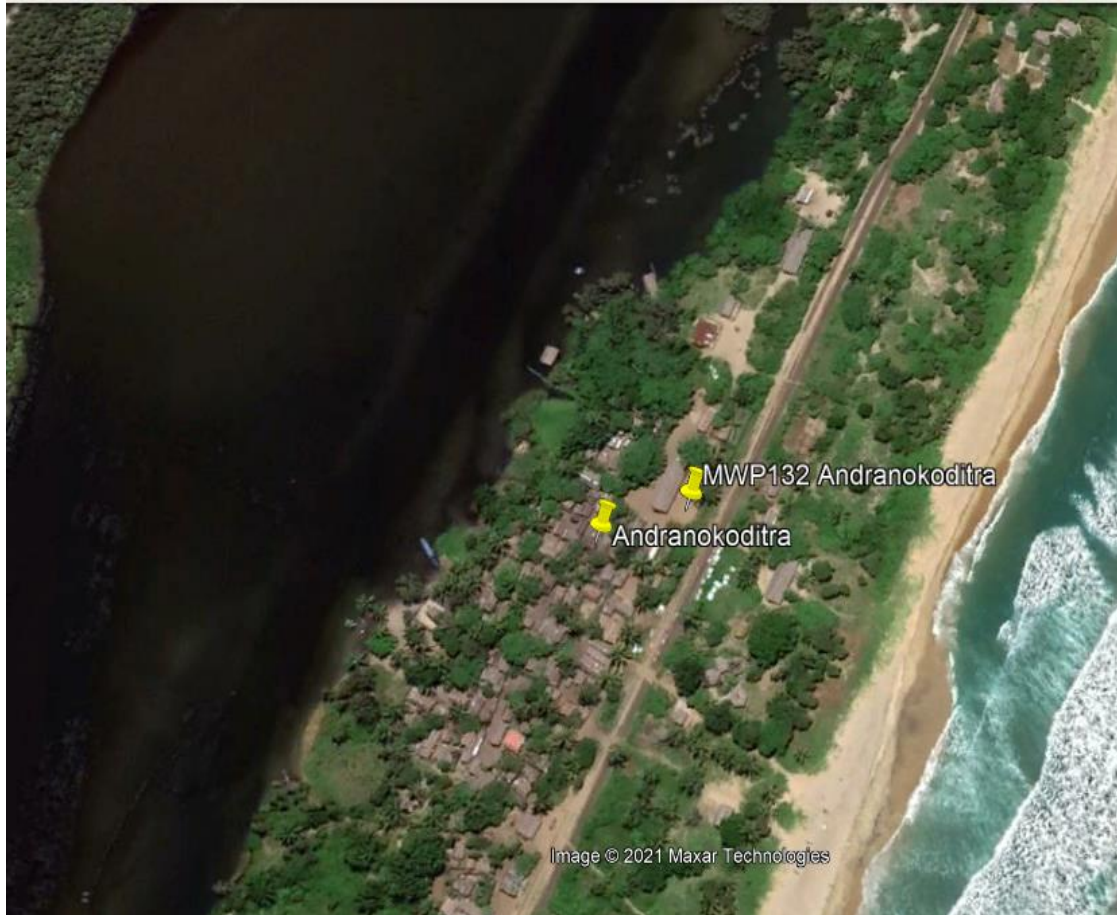
- Source of revenue: Fishing, Farming
- Source of water: Canzee pump
- Existing water infrastructure: 5 Canzee pumps. 3 working
- MWP Well installed: MWP131

- Date of installation: August 2021
- Pump Type: XL Pump
- Pedestal: Standard pump
- Screen / Well Point: Steel
- Pipe: Steel

WT: 4.0m BHA: WP+3+1+2 BGL: 6.2m
Flow: 25 liters per minute
Quality: Fresh

ANDRANOKODITRA

18°35'49.37"S / 49°14'54.24"E



- Region: Antsinanana
- District: Brickaville
- Commune: Ambinaninony
- Fonkotany: Andranokoditra
- Number of population: 622

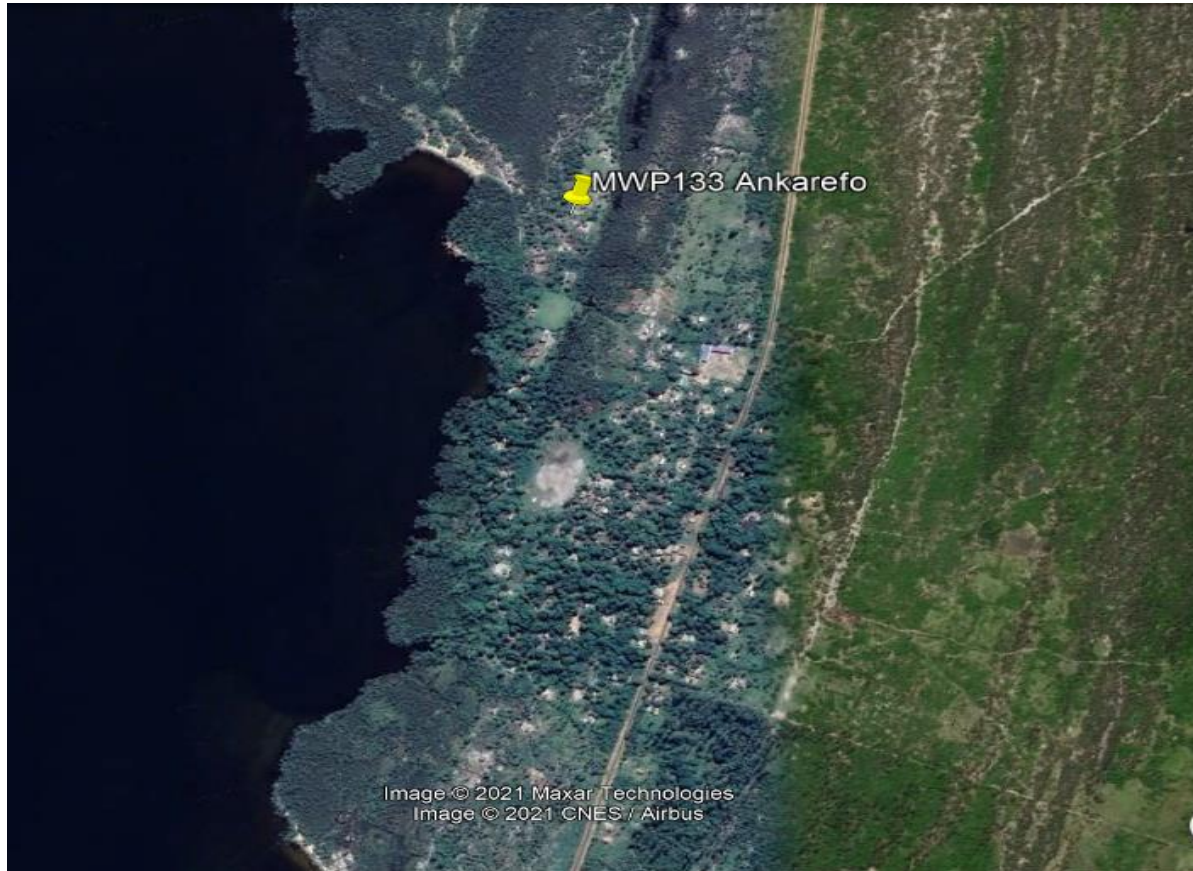
- Source of revenue: Fishing, Farming
- Source of water: Canzee pump, Pangalana channel
- Existing water infrastructure: 5 Canzee, 2 working, salty Sept-Oct
- MWP Well installed: MWP132

- Date of installation: August 2021
- Pump Type: XL Pump
- Pedestal: Standard pump
- Screen / Well Point: Steel
- Pipe: Steel

- WT: 2.6m BHA: WP+3+2 BGL: 5.2m
- Flow: 25 liters per minute
- Quality: Fresh

ANKAREFO

18°24'01.8"S / 49°19'15.37"E



- Region: Antsinanana
- District: Brickaville
- Commune: Ambinaninony
- Fonkotany: Ankarefo
- Number of population: 180

- Source of revenue: Fishing, Farming
- Source of water: Private artisanal pump
- Existing water infrastructure: No Public Sources
- MWP Well installed: MWP133

- Date of installation: August 2021
- Pump Type: XL Pump
- Pedestal: Standard pump
- Screen / Well Point: Steel
- Pipe: Steel

- WT: 2.0m BHA: WP+2+2 BGL: 4.2m
- Flow: 25 liters per minute
- Quality: Fresh, bit brown