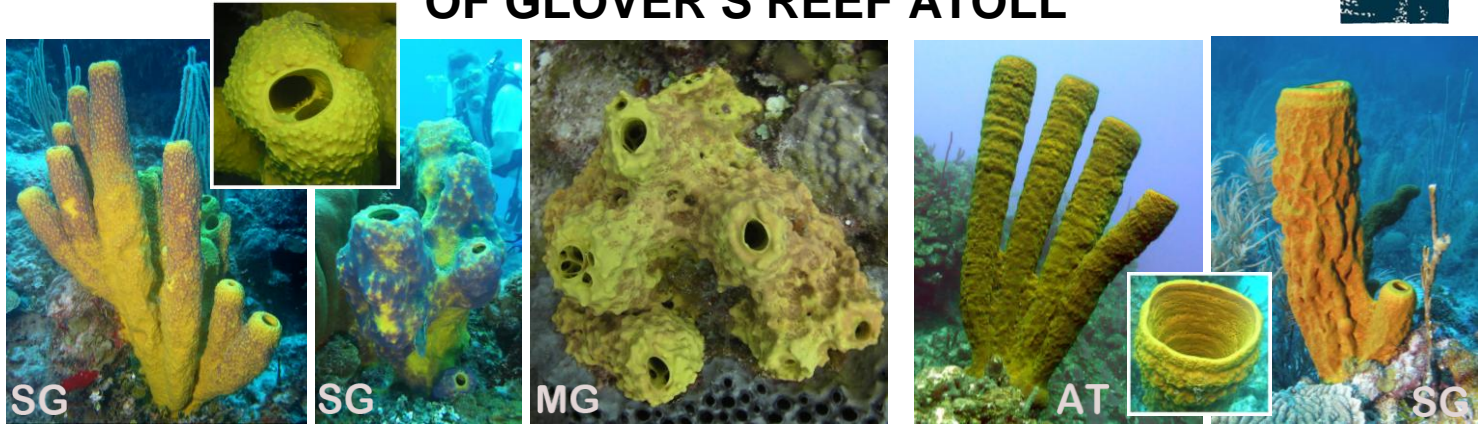


PICTURE GUIDE TO SOME COMMON SPONGES OF GLOVER'S REEF ATOLL



BRANCHING TUBE SPONGE
Aiolochoia crassa (tough)

YELLOW TUBE SPONGE
Aplysina fistularis (tough)



hard, tough
BARREL SPONGE
Aplysina lacunosa

BRANCHING VASE SPONGE
Callyspongia vaginalis (tough, color variable)

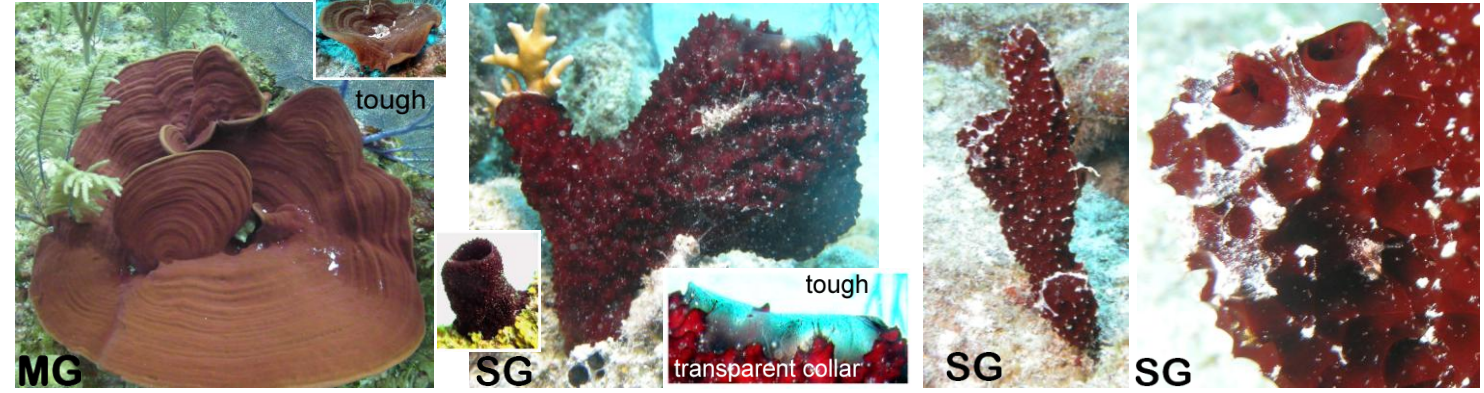
translucent
AZURE VASE SPONGE
Callyspongia plicifera (tough)



PINK VASE SPONGE (zoanthids)
Niphates digitalis (tough, spiny)

Agelas tubulata
(tough, smooth, tubes grow from single base)

Petrosia pellasarca
(stiff, crumbly, smooth)



BROWN BOWL SPONGE
Cribrochalina vasculum

STRAWBERRY VASE SPONGE
Mycale laxissima (mucousy, stains)

Pandaros acanthifolium
(tough, stains fingers)

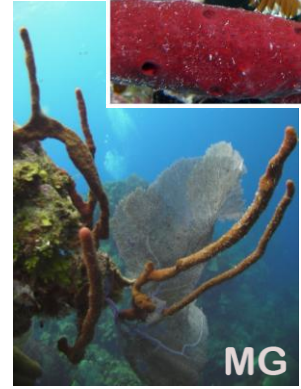
PICTURE GUIDE TO SOME COMMON SPONGES OF GLOVER'S REEF ATOLL



SG
Ptilocaulis sp.
(tough)



SG
LAVENDER ROPE SPONGE
Niphates erecta (tough)



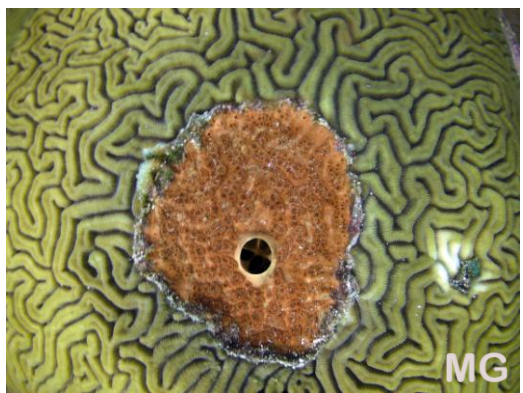
MG
ERECT ROPE SPONGE
Amphimedon compressa (tough)



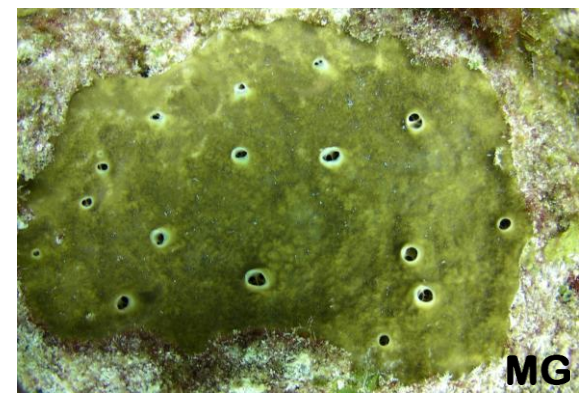
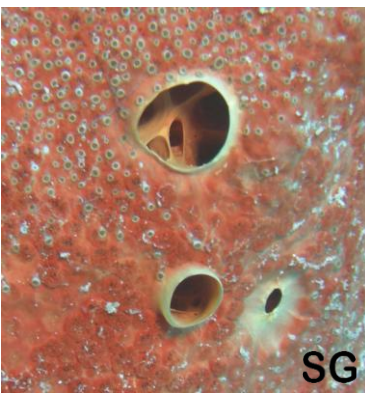
SG
SCATTERED PORE ROPE SPONGE
Aplysina fulva (tough)



SG
GREEN FINGER SPONGE
Iotrochota birotulata (tough, stains fingers)



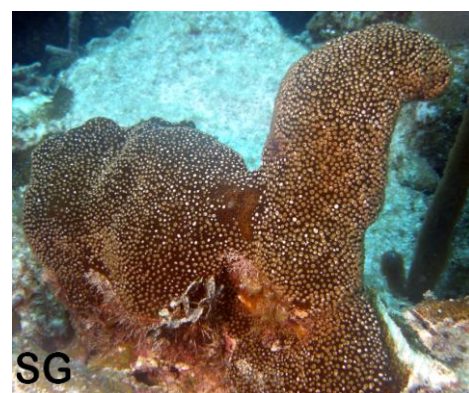
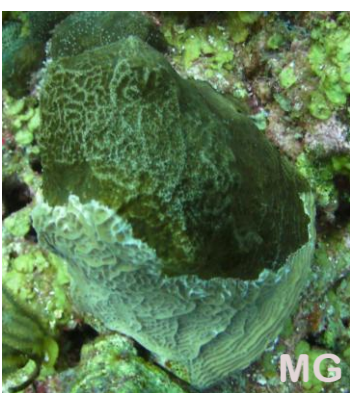
MG
RED BORING SPONGE
Cliona delitrix (soft, deeply excavating, orange inside)



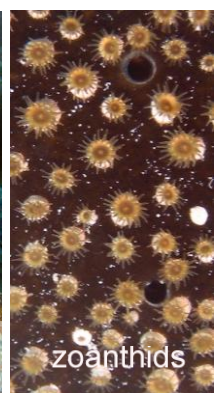
MG
BROWN VARIABLE SPONGE
Cliona varians (tough, excavating)



MG
Cliona tenuis (soft, excavating, "see-through" crusts on coral)

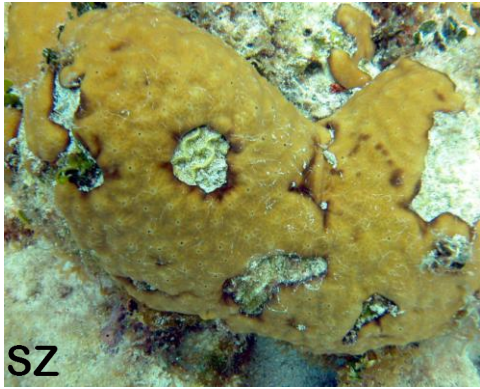


SG
Cliona caribbaea (tough, excavating)



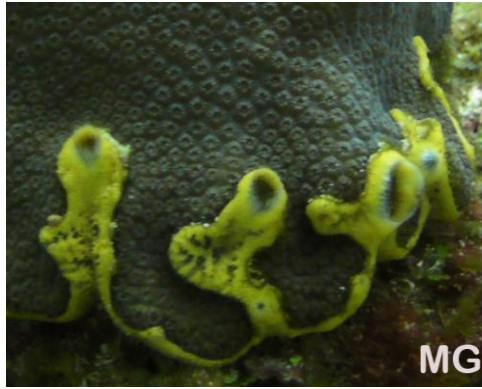
zoanthids

PICTURE GUIDE TO SOME COMMON SPONGES OF GLOVER'S REEF ATOLL



SZ

CHICKEN LIVER SPONGE (tough)
Chondrilla caribensis fo. *hermatypica*

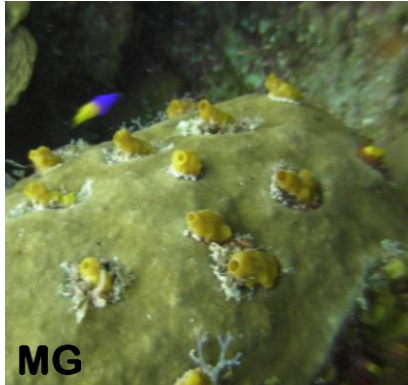


MG



SG

ORANGE ICING SPONGE
Mycale laevis (tough/crumblly, in crevices & undersides of corals)



MG

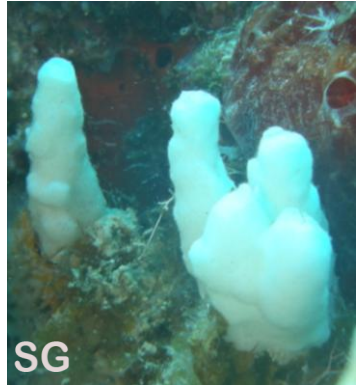


SG

VARIABLE BORING SPONGE *Aka coralliphaga* (crumblly)

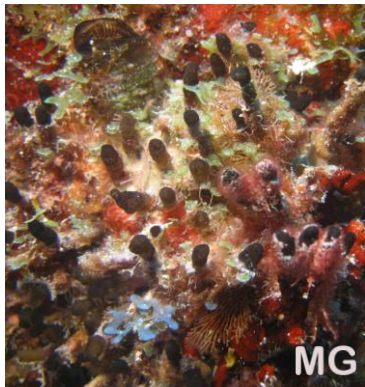


SG



SG

Aka xamaycaensis (tough)



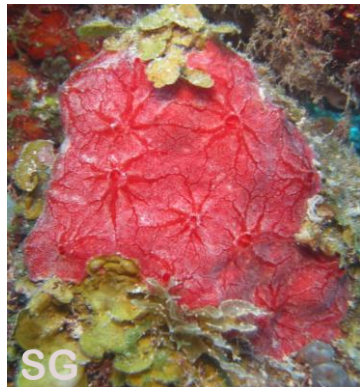
MG



SG



JP

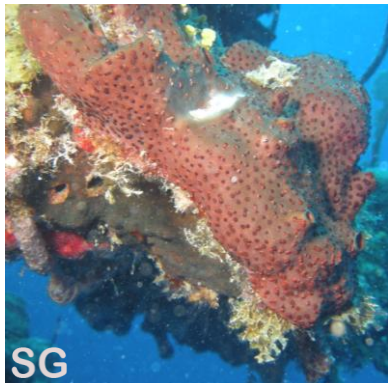


SG

Oceanapia bartschi
(globular, tough/crumblly, heavily fouled)

Scopalina ruetzleri (soft, fluffy cushions)

Monanchora arbuscula (stains fingers)



SG



SG

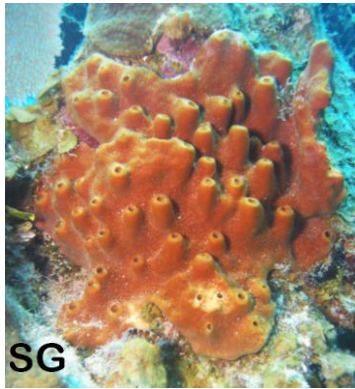
DARK VOLCANO SPONGE
Svenzea zeai (crumblly)



SG

Desmappsamma anchorata
(soft, produces mucous when handled) **Page 3**

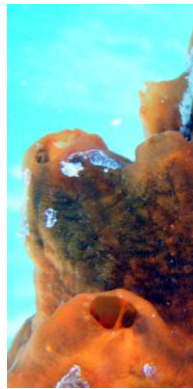
PICTURE GUIDE TO SOME COMMON SPONGES OF GLOVER'S REEF ATOLL



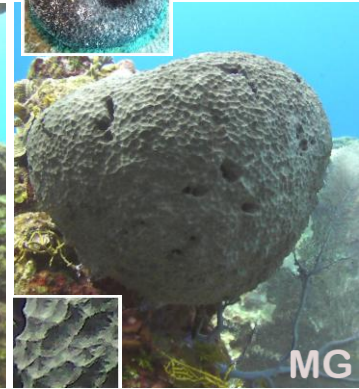
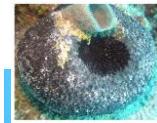
SG
BROWN VOLCANO SP
Ectyoplasia ferox (crumbly)



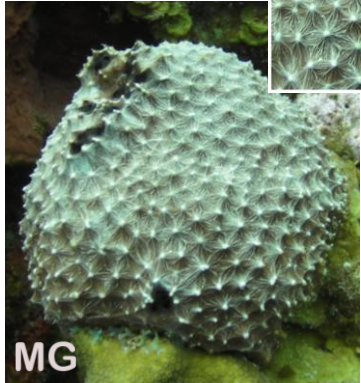
TB
FIRE SPONGE
Tedania sp. (crumbly)



MG
Sidonops neptuni (hard)



MG
BLACK BALL SPONGE
Ircinia strobilina (tough)



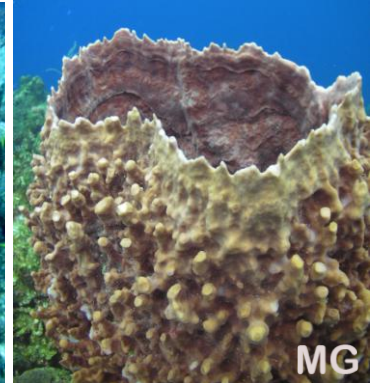
MG
STINKER SPONGE
Ircinia felix (tough)



SZ
LOGGERHEAD SPONGE
Spheciospongia vesparium (tough)



AT
GIANT BARREL SPONGE
Xestospongia muta (crumbly)



Many sponge species are variable in form and color. Some resemble each other so closely that they are very difficult to separate in-situ. Proper identification often requires collection and microscopic examination of tissue and included spicules. The images herein may help you get close and provide a starting point. For more detailed species descriptions and information on habitat, life history and distribution go to the web sites

<http://www.spongeguide.org> and <http://coralpedia.bio.warwick.ac.uk/>, or

“REEF CREATURE IDENTIFICATION: FLORIDA, CARIBBEAN, BAHAMAS” by Paul Humann & Ned DeLoach, New World Publications, Inc.

Glover's Reef images by Manuel González-Rivero (MG), Tom Bright (TB), Steve Gittings (SG) and Alex Tilley (AT)

Other images, not from Glover's Reef but representing species reported there, are used with the permission of: Sven Zea (SZ), Timothy Henkel, and Joseph Pawlik (JP), 2009. *The Sponge Guide: a picture guide to Caribbean sponges* www.spongeguide.org

Species identifications by Manuel González-Rivero, Sven Zea and Tom Bright

This may be copied and used freely for educational purposes
 January, 2012



WILDLIFE CONSERVATION SOCIETY
Glover's Reef Research Station, Belize