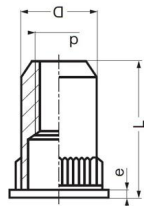
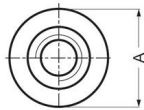




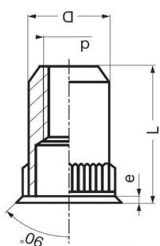
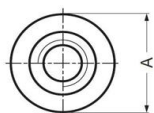
### Tuerca remachable de ala ancha.



Código	Medida (mm)	d (mm)	A (mm)	Espe- sor a fijar (mm)	e (mm)	unds caja	unds cartón
TRAM4	M-4	5,9	9,0	0,5-3,5	1,0	1.000	8.000
TRAM5	M-5	6,9	10,0	0,5-3,5	1,0	1.000	8.000
TRAM6	M-6	8,9	12,0	1,0-4,0	1,5	1.000	8.000
TRAM8	M-8	10,9	15,0	1,0-4,0	1,50	1.000	8.000
TRAM9	M-10	12,9	19,0	1,0-5,0	1,7	1.000	8.000



### Tuerca remachable de cabeza reducida.



Código	Medida (mm)	Ø taladro (mm)	d (mm)	A (mm)	Espe- sor a fijar (mm)	e (mm)	unds caja	unds cartón
TRCM4	M-4	6,0	5,9	7,0	0,5-3,5	1,0	1.000	8.000
TRCM5	M-5	7,0	6,9	8,0	0,5-3,5	1,0	1.000	8.000
TRCM6	M-6	9,0	8,9	10,0	1,0-4,0	1,5	1.000	8.000
TRCM8	M-8	11,0	10,9	12,0	1,0-4,0	1,50	1.000	8.000
TRCM9	M-10	13,0	12,9	16,0	1,0-5,0	1,7	1.000	8.000



## Tuerca remachable

Aplicación

Tuerca remachable .

Material: Acero al carbono

GARANTÍA FESIT

