



# First Baptist Church of Wallace, NC

## First Family

June 2017



### You Knocked It Out of the Park, First Baptist!

*-- a goal completely met, and even more great things lay ahead...*

#### Easter Offering Victory!

At Easter, we had our special Easter offering



which focuses on a specific ministry and helps *rocket* it forward. This year, our focus was Centri Kid, the children's summer camp for worship, Bible study, and growth.

At last year's camp, 6 children became followers of Jesus. This year we want to take 20 children and 5 adult leaders.

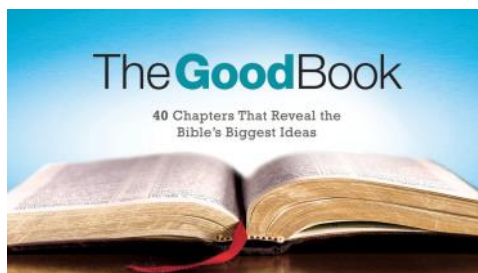
Our goal this year was to raise all the money needed to provide this \$300 week of camp at no expense to the families whose children attend and to our adult leaders.

And, folks, you blew the roof off of that goal! Our goal was \$7200, but because of your passion and generosity, you gave **\$8990...** allowing us to provide the children with extra resource to make their week at camp as high-impact as possible.

***Thank you!!***

#### Summer Life Group Study "The Good Book"

This summer, we take an 8-week break from our DisciplesPath study to learn about "40 chapters that reveal the Bible's biggest ideas." The study, called "The Good Book," takes 40 chapters that can help you grasp the whole story of the Bible, and digs down on those.



You're going to love this study, and the great discussions it prompts.

We'll have a sign up sheet making the rounds this month to see who would like to purchase the book. If you want this study book, but the \$15.00 price hits hard right now, just let Pastor Al know and he'll see to it you can still get it.

Teachers, information and resources for class will be available very soon.

#### Personnel Committee at Work

The Personnel Committee has been in touch



with a number of people and sources as we look at current and upcoming staff vacancies. While we work to meet the most immediate needs, we are also evaluating our long term and future needs so we will know with clarity the skills and experience we need for our church.

#### Directions Team Update

First Baptist Church is currently in a process to shape a vision and plan for our future as a church. Prompted by major change in the world around us, and the growing diversity of needs and perspectives within the church, we are working to form a plan that will honor God and unite our efforts to transform lives in the power of the Gospel.

An overview of what we have already accomplished and where we are headed is inside this edition on pages 6 & 7.

## **Worship**

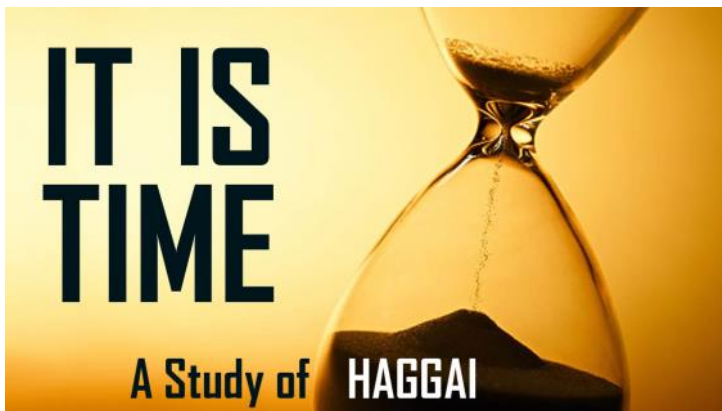
### **It Is Time!**

Recently, in a couple of different places, people within the First Baptist family have said, "It's time to stop playing church!" By that, they meant that we need to move beyond routine and busyness, beyond the status quo to seriously address the growing need in the lives of people both inside and especially outside the church.

Over five years ago, a local resident described First Baptist Church of Wallace as "a sleeping giant." This man was saying that our church had tremendous potential, but we were doing very little to realize that potential.

Well, heaven knows, it is time... time for God's people to develop an unwavering passion for those living in darkness, time for God's people to take their eyes off of themselves and focus on the Savior and His mission field, time to look beyond petty preferences and past slights and practice a radical commitment to following in the footsteps of Jesus -- with not one toe out of place.

So for the month of June, our worship theme is "It Is Time." Our messages will come from the book of Haggai. Haggai was a prophet of God who served during a time when God's people had grown lazy and self-absorbed in their faith. I think Haggai will speak powerfully to us in our day. Don't miss it!



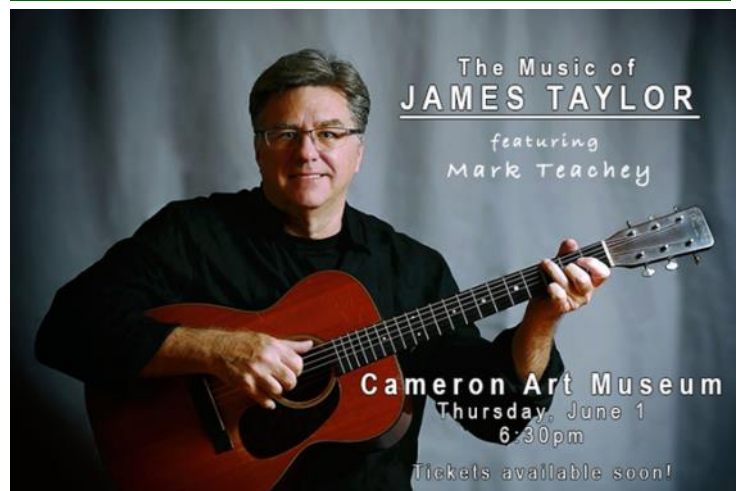
**June 04 - Do the Hard Thing**  
**Haggai 1:1-8**

**June 11 - Don't Wimp Out**  
**Haggai 1:13-2:9**

**June 18 - Pursue Holiness**  
**Haggai 2:10-19**

**June 25 - Look Forward**  
**Haggai 2:20-23**

## **Senior Adults**



### **Merrie Gerries Day Trip News**

For those of you who are signed up, our Merrie Gerries are headed to Wilmington to the Cameron Art Museum to enjoy a musical program given by Mark Teachey. We are leaving the church at 4:00 p.m. on Thursday, June 1. On the way to the Museum, we are stopping at Arbys and Wendys to grab something to eat, so please bring money to eat. The cost of the trip is \$23 and includes your concert ticket and Transportation. Don't miss out on this fun evening of fellowship!

## **Lifeline Screening**

### **Life Line Screening**

Life Line Screenings are available in the Fellowship Hall of First Baptist Church on Monday, June 12.

Pre-registration is required. To register for your appointment and for more information:

call 1-888-653-6450

or visit

[www.lifelinescreening.com/community-partners](http://www.lifelinescreening.com/community-partners)





## WallaceKids Summer Programming

**Creativity is a reflection of the character of God.**

From the opening pages of Scripture, we encounter God's creativity in action. With words, *Let there be light*, the poem of creation unfolds as light gives way to time, oceans and mountains form, galaxies are set in motion, and the earth is filled with birds, fish, and every creature imaginable. But God is not finished creating. God decided that He wanted His image to populate the earth. He created people in His image to take care and develop His magnificent creation. Humans are unique in that we reflect God in how we interact with each other and the world around us. That interaction includes God's creativity. We may not form mountains and oceans, but we create art and music, build cities, solve problems, and innovate technology—all of which starts with our God-given creativity.

**Jesus showed us creativity in action.**

Jesus was the Word that spoke God's creation into existence at the beginning of time. And when Jesus arrived on planet earth to fulfill God's plan to rescue humanity, that same creativity was evident in every interaction we read throughout Scripture. Through stories, Jesus could explain something difficult or confusing about the Kingdom of God. With unconventional materials, Jesus healed the sick and hurting. With the right question, He could point to His disciples and the religious leaders what is most important to God. Throughout His earthly ministry, Jesus showed us the difference we can make in the world through creativity.

We think it's important for us to help our kids and families discover more about Creativity—imagining what you could do because you are made in God's image.

**Our Memory Verse for June comes from Psalm 139:14.**

In Psalm 139:14, we read, *How you made me is amazing and wonderful. I praise you for that* (NIRV). Through this Psalm, David acknowledges God's continued provision for his life. He worships God for His care and concern for even the smallest aspects of life. Being created in God's image, means that we are special compared to the rest of creation. We reflect God in amazing and wonderful ways.

As we help kids discover more about God's creativity, we head to the beginning—Genesis—and learn more about God's creativity in the creation of the world.

## Don't Just Read About It!!!

You can be a part of making sure that the life-changing message of Jesus is lovingly and excitingly presented to our children. Our volunteers consistently say that leading our children to the throne of God each week is the highlight of their week. There is so much joy in seeing a child connect the dots that they are loved and cherished by God. Join the team by seeing James or calling the church office and asking where we can plug you in!



## CentriKid Parent Meeting

CentriKid is June 19-23 and is quickly approaching. We will have a parent meeting on Sunday, June 4, at 10:00 a.m. (Between Life Café and Traditional Services). We need to fill out medical release forms, track time cards, special attention cards, and all the other wonderful paperwork that comes with a week of camp. You can download and print the forms by going to [www.wallacefirstbaptist.org](http://www.wallacefirstbaptist.org) and clicking the CentriKid button. REMINDER: All medical forms must be notarized and we need copies of each child's insurance card.



## Wallace Students



### TRIBES Begins Sunday, June 4

This year will be our 4th annual TRIBES competition at Wallace Student Ministries. Each year we've seen the group grow during the summer months as each of our TRIBES does whatever they can to bring their friends and increase their TRIBE.

We will start TRIBES this year on Sunday, June 4, at 6:00 p.m. We'll meet in the Fellowship Hall for dinner and then, "Let the games begin!"

If you'd like to get in on the summer fun by helping provide a meal one week during TRIBES, please let James Copeland know.

## Graduates

### 2017 Graduates

#### High School Graduate

**Emily Donnelly** - Graduating from Wallace Rose Hill High School. Daughter of Rick and Tami Donnelly.

#### College Graduates

**Grace Perry** - Graduate of Eastern Carolina University. Bachelor's Degree in Special Education General Curriculum, Magna Cum Laude.

**Trip Perry** - Graduate of North Carolina State University. Bachelor's Degree in Marketing.

**Andrew Williams** - Graduate of North Carolina State University. Bachelor's Degree in Agricultural Science.



### Motion Conference - July 26-30

This year our students are going to the Motion Conference in Birmingham, Alabama. It's not too late to sign up, however, the cost goes up the longer you wait. The current cost per student is \$200 per person and it is due at sign up.

## Scholarships

### 2017 WMU Powers Scholarship Award Recipients



**Emily Donnelly** - Attending Cape Fear Community College this Fall as a Freshman.

**Ashlynn Patram** - Attending Campbell University this Fall as a 2nd Year Senior (5-Yr. Degree).

**Myranda Ross** - Attending University of North Carolina at Wilmington this Fall as a Senior.

**Anna Russ** - Attending Wake Tech Community College this Fall as a Sophomore.

**Sarah Williams** - Attending Campbell University this Fall as a Junior.



## Women of Joy



Some of our First Baptist Church ladies who attended an exciting Women of Joy Conference weekend in Myrtle Beach on May 5-7. Hope to see you ladies there next year!

## Shoeboxes

### Operation Christmas Child

Just a reminder, our item for this month is a spiral notebook. You can drop-off your item(s) in the clear plastic container. Please stop by the O.C.C. table in the foyer and pick-up a shoebox OR if you prefer to write a check (\$30.00), we will be happy to do the shopping and packing for you. Either way I pray that you will consider being a part of the power of a simple gift.



Two important changes for this year: we will no longer be collecting candy or toothpaste because of custom regulations. Also, the shipping donation amount is \$9.00 per box because of increasing processing, shipping and distribution cost. If you have any questions please ask Maggie or Marie Casteen. Thank you.

## Congratulations



**Harrison Rex Pritchard**

**Born May 17, 2017**

8 lbs., 12 oz., 18 1/2 inches

Parents: Ty & Emily Pritchard

Grandparents: Al & Dee Thompson

## Our Future Directions Planning Team is Working Hard and Moving Forward

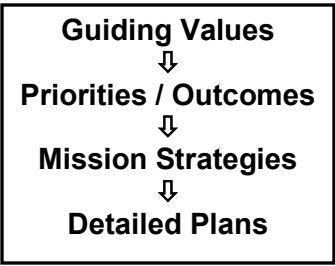
At our last Business Meeting, the church elected the team that is meeting to discern a unified future ministry and mission plan for our church. This is more than just putting together a mission statement. This team will be producing a comprehensive plan to guide the future ministries of our church.

You can expect the plan to call for the discontinuation of some things we have done for a long time, things we may be fond of. And you can expect the plan to call for the creation of some huge new endeavors as a church -- plans that may seem frightening to some in the boldness and courageous faith these plans require from us.

In our first steps together, we are working to create a set of “non-negotiable values” that will guide the choices we make as this process continues. Our team searched God’s word together and individually, and we discussed the truths and commands we found that absolutely must shape any plan that our church has. In fact, these truths are universal. Every church should follow these truths.

Because they are non-negotiable, as we move forward and we have to make hard choices, these values will help us do that. If there is something I really want my church to do, but it doesn’t harmonize with all of these values, then without apology we say “no” to that option, that program, that tradition. Once we move forward on this, we will not be backing up to change our minds, because we are confident that God is leading us each step of the way.

From the guiding values we identify, we will be setting our priorities and desired outcomes for the plan. In other words, we will be determining what success looks like in general terms.



When we know what we want to accomplish, we will then start formulating mission strategies: what are some of the best ways to get to the outcomes God is calling us to reach? And all along the way, we will continue to go back to our values to ask, “Does this strategy reflect all of the non-negotiable guiding values we agreed upon?”

Now, we want to invite you to join us on this journey. You can do so from the comfort of your own home, though we hope you will also take the journey together in your various groups, committees, and friendship circles in the church. Here’s how you can be a part...

On the next page is a chart that lists the values that we, as a group have identified as essential, mandatory, and non-negotiable. And we’ve listed some of the many Scripture verses that show God’s desire for these values to be present in the work and direction of His church.



Look over the list, and ask: *Did they miss anything? Did they include something that really is NOT an expectation of God? Does any of this challenge my thoughts and preferences?*

Then, we invite you to take the next step at the same time we are taking it: Write in the right-hand column what the implications of each value are for who we are and what we do as a church.

- Are there things we should **START** doing that we don’t do now?
- Are there things we should **STOP** doing that we’ve done for a long time?
- Are there changes in **HOW** we do things that need to happen in order for us to conform to these values?

We also invite and encourage you to talk with others at home and in the church family about these values. Find out what others are thinking, and let them know what you think. And don’t forget to pray about these things in support of the Directions Team’s work.

We have also begun reading the book *How to Reach People Under 30 while Keeping People over 60*. We have a few extra copies for anyone who would also like to read this book along with us. Just let Pastor Al know of your interest.

**Finally, we do have a need on our Directions Team.** We need one or two younger adults to start taking this journey with us. If you are a young single, or young married, or a parent with a child at home, your insight and input is greatly needed and would be invaluable. If you are willing to serve and need more info, let Pastor Al know and he will give you all the information with no pressure for you to commit.



## FBC Directions Planning Team -- Non-Negotiable Values for Our Future Plan

Non-Negotiable Value Statement	Biblical support	Practical Implications
<b>This plan must fulfill the Great Commission. Our focus is on the lost.</b> Leading people to faith in Christ and growing them into disciples who make disciples will be our primary measure of success. Beyond loving one another, this is our ONLY mission in this world. The Shepherd left the 99 safe sheep to find the lost <i>one</i> .	Matthew 28:19-20 Mark 2:17 Luke 15:1-32 Luke 19:10	
<b>This plan must be God's will for our church and not our will.</b> We recognize that this will push us out of our comfort zones, but our personal preferences will not determine the content of the plan, but God's plan and God's agenda will. God's word will be our guide and authority at every turn.	Proverbs 3:5-6 Proverbs 14:12 Matthew 6:10 Luke 9:23-24 Romans 12:2	
<b>This plan must reflect the love of Christ.</b> All that we see in the love of Christ, we should see in this plan. Respect and honor of God and others, encouragement, gentleness, the Fruit of the Spirit, words that build up, redemptive purpose, & deep sacrifice. Being who we're called to be precedes doing what we're called to do.	Matthew 22:37-40 John 13:34-35; John 15:12-13 1 Corinthians 13:1-8 Galatians 5:22-26	
<b>This plan must produce effectiveness in ministry and mission.</b> Good intentions aren't enough. We must accomplish our mission. So we will "prune away" what's not winning and growing people, demand and give excellence, and be faithful & unafraid to measure our progress and prune again.	Matthew 25:14-30 John 15:1-2,8,16	
<b>This plan must produce engagement and growth in our people.</b> "Sitting on the bench" is unacceptable. We will expect ALL of our people to grow in maturity, to use their gifts in active ministry, to do their part to win and disciple others, and to advance God's Kingdom. We will grow into leaders.	Romans 12:4-8 1 Corinthians 12:1-26 Ephesians 4:7-16	
<b>This plan will require the miraculous power of God to succeed.</b> This plan will demand more than we've got. So we will "abide" in Christ, guided by prayerful connection to Christ. We will rely on and trust in God's miraculous power, with a humble admission of our human weakness and limited vision.	Judges 7:2 Isaiah 55:8-9 Jeremiah 33:3 Luke 18:25-27 John 15:4-6	

## Just for Laughs

Wilber was an active member at Hog Creek Baptist Church. So, naturally, when Wilber found himself in a crisis, he went to talk to his pastor.

Wilber explained, "Pastor, my stock market investments have all hit bottom, my savings are all used up, I just lost my job, my car broke down, and I can't pay any of my bills. What am I going to do?"

The pastor gave him what encouragement he could, but he knew Wilber needed some help straight from God for problems this big. And not really knowing where to point him, the pastor said, "Wilber, I suggest that you go home, sit down in a quiet place, close your eyes, open your Bible, and place your finger somewhere on whatever page it opens to. Then open your eyes, look at what your finger is pointing to, and see what wisdom God has for you."

So Wilber did just that. And God gave him just what he needed. When Wilber opened his eyes and looked at where his finger had pointed, he saw in all capital letters "CHAPTER ELEVEN."



## Prayer Requests



*Those in our community whom God has called us to lead to Christ and minister to in His love. Haley Arnette, Annette Blizzard, Berlene Boney, Benjamin Gonzales, David Paul Hill, Haywood Holmes, Lisa Hunt and family, Don Jenkins, Velma Jenkins, Ralph & Eloise Jernigan, James Johnson, Ivey Jones, Graham Kilpatrick, Melanie Leggett, Tracy Moore, "Peanut", James Earl Rich, Murphy Rivenbark, Becky Rooks, Helen Sholar, Judy Sterbach's brother, Stephen Thompson, Alyson Walters, Joyce Williams, Ricky Wood, Law Enforcement and all service members deployed around the world.*



## New Members



## Thank You

Dear First Baptist Church Family,

Thank you for all your cards and prayers during my time in the hospital.

In Christ's Love,

Helen Sholar





## **Volunteers**

### **June Volunteers**

**10:00 a.m. Sunday Life Groups Nursery**

Donna & Sammy Marshburn

**11:00 a.m. Worship Hour Nursery**

Susan, Maggie Ray, Olivia and Claire Elizabeth Bradshaw

**Sunday Ushers:**

Connections Small Group

**Tellers:** Sharon Teachey & Fay Hedgpeth



**July Newsletter Submission  
Deadline: June 15, 2017**



Please email articles to  
office.fbcw@gmail.com  
Please make articles brief!

## **Church Staff**

### **First Baptist Church of Wallace**

408 W. Main St., Wallace, NC 28466

Phone: 910.285.2534 Fax: 910.285.7810

www.WallaceFirstBaptist.org

Dr. Alan Thompson, Senior Pastor

Email: alan.fbcw@gmail.com/Cell: 282-8095

Rev. James Copeland,

Assoc. Pastor of Youth and Children

Email: james.fbcw@gmail.com/Cell: 463-8455

Rev. Arledge Castles, Deaf Minister Pastor

Email: Arledge.Castles@charter.net

Mrs. Kim Longenbach, Administrative Assistant

Email: office.fbcw@gmail.com

Mrs. LaRue Faircloth, Organist/Choir Accompanist

Mr. Ivey Jones, Custodian

## **On the Record**

### **Attendance**

#### **Life Groups**

4-30	5-7	5-14	5-21
95	87	129	104

#### **Worship**

169	160	206	165
-----	-----	-----	-----

### **Budget and Receipts**

2017 Budget \$483,029.00

Offering Receipts To Date 5-21-2017 **\$178,117.61**

## **June Birthdays**



1 Robbie Stallings	15 Chance McIntyre
1 Laura Beth Russ	15 Sara Hughes
1 Tre Dalton	16 J. Herring
4 Maggie Casteen	21 Whitney Boyette
4 Felicia Williams	21 Mason Stone
5 Cathi Hale Bulla	23 Sue Baker
6 Sandra Boone	23 Mimi Powell
7 Michael Pate	25 Evelyn Godwin
9 Bobby Teachey	26 Ralph Griffin
9 Brenda Merritt	28 Judy Jackson
13 Cindy Hawes	29 Hannah Kraulik
14 Ricky Wood	

## **Office Hours**

**Mon.-Thurs.:** 8:00 a.m.-4:00 p.m. (Closed 12-1 p.m.)

**Fri.:** 8:00 a.m.-12:00 p.m.

**Sat. & Sun.:** Closed

# First Baptist Events

# June 2017

Sun	Mon	Tue	Wed	Thu	Fri	Sat
						
<b>4</b> 9:00 am-Life Café 9 am-12 pm-WallaceKids 10:00 am-Life Groups 10:00 am-CentriKid Mtg. 10:35 am-Chancel Choir 11:00 am-Worship 6:00 pm-Tribes	<b>5</b> <b>6:30 pm-Properties</b> 7:00 pm-NA Mtg., R305	<b>6</b> 2:00 pm-Staff Meeting 5:00 pm-Worship Band	<b>7</b>	<b>1</b> 4:00 pm- <b>Merrie Gerries Trip to            Cameron Art Museum            Dinner &amp; Music Program</b>	<b>2</b>	<b>3</b>
<b>11</b> 9:00 am-Life Café 9 am-12 pm-WallaceKids 10:00 am-Life Groups 10:35 am-Chancel Choir 11:00 am-Worship <b>12-3 pm-Fellowship Hall Rsrvd.</b> <b>1:00 pm-Deacon's Meeting</b> 6:00 pm-Tribes	<b>12</b> <b>8:30 am-5:30 pm-Life-            Line Screening, FH</b> <b>6:30 pm-WMU V,            Wallace Gardens</b> 7:00 pm-NA Mtg., R305	<b>13</b> 2:00 pm-Staff Meeting 5:00 pm-Worship Band	<b>14</b>	<b>15</b> <b>Newsletter Deadline</b>	<b>16</b>	<b>17</b>
<b>18 Father's Day</b> 9:00 am-Life Café 9 am-12 pm-WallaceKids 10:00 am-Life Groups 10:35 am-Chancel Choir 11:00 am-Worship 6:00 pm-Tribes	<b>19 CAMP</b> 7:00 pm-NA Mtg., R305	<b>20 CAMP</b> 2:00 pm-Staff Meeting 5:00 pm-Worship Band <b>7:00 pm-Stewardship</b>	<b>21 CAMP</b>	<b>22 CAMP</b> <b>7:00 pm-Bible Profilers</b>	<b>23 CAMP</b>	<b>24</b> <b>Fellowship Hall Reserved</b>
<b>25</b> <b>Regular Activities</b> 1:30 pm-Directions Team 6:00 pm-Tribes	<b>26</b> 7:00 pm-NA Mtg., R305	<b>27</b> 2:00 pm-Staff Meeting 5:00 pm-Worship Band <b>7:20 pm-Missions</b>	<b>28</b>	<b>29</b>	<b>30</b>	