

When recorded, please mail to:

PASTURES AT SADDLEBACK P.U.D.
HOMEOWNERS' ASSOCIATION
c/o Christopher F. Robinson
P. O. Box 540478
North Salt Lake, Utah 84054

Tooele County Tax Parcel Nos.: 05-016-0-0029

**DECLARATION OF COVENANTS, CONDITIONS AND RESTRICTIONS FOR
WATER CONSERVATION AT THE PASTURES OF SADDLEBACK P.U.D. PLAT 5**

THIS DECLARATION OF COVENANTS, CONDITIONS AND RESTRICTIONS FOR WATER CONSERVATION AT THE PASTURES OF SADDLEBACK P.U.D. PLAT 5 (the "Water Declaration") is made effective as of December 14th, 2017 (the "Effective Date"), by SADDLEBACK PASTURES, L.C., a Utah limited liability company (referred to herein as "Declarant"), with respect to the following:

WHEREAS, the Declarant has recorded the Pastures at Saddleback P.U.D. Plat 5 (the "Plat") upon the Land in order to subdivide it into thirty-seven (37) single-family residential Lots (a "Lot" or if more than one, "Lots"), according to the official plat thereof on file in the official records of the Recorder of Tooele County, Utah (the "Official Records");

WHEREAS, pursuant to that certain *Plat 5 Amendment the Amended and Restated Declaration of Covenants, Conditions and Restrictions of Pastures at Saddleback P.U.D.* (the "Plat 5 Amendment") dated December 14, 2017, which was recorded as Entry No. 459896 on December 14th, 2017 in the Official Records, which amends that certain *Amended and Restated Declaration of Covenants, Conditions and Restrictions of Pastures at Saddleback P.U.D.*, dated August 4, 2015, which was recorded in the Office of the Recorder of Tooele County, Utah on August 4, 2015 as Entry No. 416674, as amended by that certain *Plat 3 Amendment To The Amended and Restated Declaration of Covenants, Conditions and Restrictions of Pastures At Saddleback P.U.D.* dated November 10, 2016, and filed with the Recorder's Office on November 10, 2016, as Entry No. 439190, as further amended by that certain *Plat 4 Amendment To The Amended and Restated Declaration of Covenants, Conditions and Restrictions of Pastures At Saddleback P.U.D.* dated June 26, 2017, and filed in the Official Records on June 26, 2017, as Entry No. 450801, as further amended by that certain *First Amendment to the Amended and Restated Declaration of Covenants, Conditions and Restrictions of Pastures At Saddleback P.U.D.* dated November 10, 2016, and filed with the Recorder's Office on November 10, 2016, as Entry No. 439193, as further amended by that certain *Second Amendment to the Amended and Restated Declaration of Covenants, Conditions and Restrictions of Pastures At Saddleback P.U.D.* dated July 17, 2017, and filed in the Official Records on July 17, 2017, as Entry No. 451892 (collectively with the Plat 5 Amendment, the "Master Declaration"); capitalized terms in this Water Declaration shall have the same meaning as in the Master Declaration, unless otherwise defined herein);

WHEREAS, pursuant to Section 7.10 of the Master Declaration, the Owner of each Lot has the right to submit and have approved by the Committee a Landscape Plan;

WHEREAS, water service to the Lots within the Plat is provided by OQUIRRH MOUNTAIN WATER COMPANY, a Utah non-profit mutual water company ("OMWC");

WHEREAS, the initial Owner of each Lot shall receive at the time of purchase of the same from Declarant the number of shares of OMWC Class B Common Stock ("OMWC Class B Stock") as provided for and defined below as the Overall Water Allowance;

WHEREAS, one (1) share of OMWC Class B Stock entitles the holder thereof to one (1) acre foot ("AF") of water annually, which equates to approximately 325,851 gallons of water per year;

WHEREAS, water is a relatively scarce and valuable resource in the State of Utah and the Declarant desires to promote and ensure its conservation and efficient use on the Lots;

WHEREAS, this Water Declaration is intended to assist the Owners of Lots in designing, implementing, and operating a Landscape Plan that will be aesthetically pleasing while at the same time one that can be sustained over the long run within the Overall Water Allowance;

WHEREAS, if an Owner exceeds his or her annual Overall Water Allowance, OMWC's overuse or overage rates will apply, which are structured to be more costly to the Owners (compared with the standard assessments per share) in order to encourage the conservation of water;

WHEREAS, based upon the average water use of an homeowner in the OMWC's service area, residential customers on average consume for Indoor Use (defined below) approximately zero point two five (0.25) AF or 81,463 gallons of water per year (the "Indoor Use Allowance");

WHEREAS, the Declarant desires to file this Water Declaration in order to promote water conservation and to specify the manner in which water may be used upon the Lots within the Plat.

NOW, THEREFORE, Declarant hereby declares that all of the Land and the Lots created therein are hereby subjected to the provisions of this Water Declaration and shall be sold, transferred, conveyed, used, leased, occupied, developed, resided upon, landscaped, mortgaged, or otherwise hypothecated or otherwise encumbered, and held subject to the terms of this Water Declaration hereinafter set forth, and which shall run with the title to, the Land and Lots hereby or hereafter made subject hereto. This Water Declaration shall be binding on all persons having any right, title, or interest in all or any portion of the Land and Lots now or hereafter made subject hereto, their respective heirs, legal representatives, successors, successors-in-title, and assigns.

1. DEFINITIONS. The following words, when used in this Water Declaration shall have the following meanings:

(a) "Bubbler": An irrigation head that delivers water to the root zone by "flooding" the planted area, usually measured in gallons per minute. Bubblers exhibit a trickle, umbrella or short stream pattern.

(b) "Drip Emitter": Drip irrigation fittings that deliver water slowly at the root zone of the plant, usually measured in gallons per hour.

(c) “Extra-Drought Tolerant Plant”: A plant that can survive without irrigation throughout the year once established, although supplemental water may be desirable during drought periods for improved appearance and disease resistance.

(d) “Grading Plan”: The Grading Plan shows all finish grades, spot elevations as necessary and existing and new contours with the developed landscaped area.

(e) “Ground Cover”: Material planted in such a way as to form a continuous cover over the ground that can be maintained at a height not more than 12 inches.

(f) “Hardscape”: Patios, decks and paths. Does not include driveways and sidewalks.

(g) “Indoor Use”: Use of water within the residential dwelling on a Lot for domestic purposes, excluding Outdoor Use of water.

(h) “Irrigation Efficiency”: The measurement of the amount of water beneficially applied, divided by the total amount of water applied. Irrigation efficiency is derived from measurements and estimates of irrigation system hardware characteristics and management practices.

(i) “Irrigation Plan”: The Irrigation Plan shows the components of the irrigation system with water meter size, backflow prevention, Precipitation Rates, flow rate and operating pressure for each irrigation circuit, and identification of all irrigation equipment.

(j) “Landscape Plan”: The preparation of a graphic and written criteria, specifications, and detailed plans to arrange and modify the effects of natural features such as plantings, ground and water forms, circulation, walks and other features to comply with the provisions of this Water Declaration. The Landscape Plan may include a Planting Plan, an Irrigation Plan, a Grading Plan, and an Irrigation Schedule.

(k) “Landscape Zone”: A portion of the landscaped area having plants with similar water needs, areas with similar microclimate (i.e., slope, exposure, wind, etc.) and soil conditions, and areas that will be similarly irrigated. A Landscape Zone can be served by one irrigation valve, or a set of valves with the same schedule.

(l) “Landscaping”: Any combination of living plants, such as trees, shrubs, vines, ground covers, flowers, or grass; natural features such as rock, stone, or bark chips; and structural features, including but not limited to, fountains, reflecting pools, outdoor art work, screen walls, fences or benches.

(m) “Mulch”: Any material such as bark, wood chips or other materials left loose and applied to the soil.

(n) “Outdoor Use”: The use of water on a Lot for irrigation of Landscaping and other uses outside of a residential dwelling, but excluding Indoor Use.

(o) “Planting Plan”: A Planting Plan identifies and locates new and existing trees, shrubs, Ground Covers, Turf areas, driveways, sidewalks, Hardscape features, and fences.

(p) “Precipitation Rate”: The depth of water applied to a given area, usually measured in inches per hour.

(q) “Rain Shut-Off Device”: A device wired to the automatic controller that shuts off the irrigation system when it rains.

(r) “Runoff”: Irrigation water that is not absorbed by the soil or landscape area to which it is applied and which flows onto other areas.

(s) “Spray Sprinkler”: An irrigation head that sprays water through a nozzle.

(t) “Stream Sprinkler”: An irrigation head that projects water through a gear rotor in single or multiple streams.

(u) “Turf”: A surface layer of earth containing mowed grass with its roots.

(v) “Water Audit”: An on-site survey and measurement of irrigation equipment and management efficiency, and the generation of recommendations to improve Irrigation Efficiency.

2. **WATER ALLOCATIONS.** At the time of conveyance of each Lot to the initial Owner, the Declarant shall sell, assign, and transfer to such Owner zero point five five (0.55) shares of OMWC Class B Stock (which equates to 0.55 AF), which allows the Owner the use of approximately 179,218 gallons of water annually for both Indoor Use and Outdoor Use (the “Overall Water Allocation”). Subtracting the Indoor Use Allocation of 0.25 AF per year from the Overall Allocation of 0.55 AF per year leaves an allowance for outdoor water use of approximately 0.30 AF or approximately 97,755 gallons per year (the “Outdoor Water Allocation”).

3. **LANDSCAPE PLAN.** Pursuant to Section 7.10 of the Master Declaration, each Owner may prepare and submit a Landscape Plan to the Committee for its review and approval as a part of the Plans. The Landscape Plan may include, but is not required to include, the following items:

(a) **Planting Plan.** A detailed Planting Plan drawn at a scale that clearly identifies the following:

(i) Location of all plant materials, a legend with botanical and common names, and size of plant materials;

(ii) Property lines and street names;

(iii) Existing and proposed buildings, walls, fences, utilities, paved areas and other site improvements;

(iv) Existing trees and plant materials to be removed or retained;

(v) Designation of Landscape Zones;

(vi) Details and specifications for tree staking, soil preparation, and other planting work; and

(vii) Location of all area within a Lot to be left in native vegetation.

(b) Irrigation Plan. A detailed Irrigation Plan drawn at the same scale as the Planting Plan may contain, but is not required to contain, the following information:

(i) Layout of the irrigation system and a legend summarizing the type and size of all components of the system, including manufacturer name and model numbers;

(ii) Static water pressure in pounds per square inch (psi) at the point of connection to OMWC's water supply;

(iii) Flow rate in gallons per minute and design operating pressure in psi for each valve and Precipitation Rate in inches per hour for each valve with Spray Sprinklers or Stream Sprinklers; and

(iv) Installation details for irrigation components.

(v) The Irrigation Plan, when taken together with other Outdoor Uses of water, should be designed not to use more than the Outdoor Water Allocation.

(c) Grading Plan. A Grading Plan drawn at the same scale as the Planting Plan may contain, but is not required to contain, the following information:

(i) Property lines and street names, existing and proposed buildings, walls, fences, utilities, paved areas and other site improvements, and

(ii) Existing and finished contour lines and spot elevations as necessary for the proposed site improvements.

(d) Irrigation Schedule. Declarant recommends that a monthly Irrigation Schedule be prepared that covers the initial 120-day plant establishment period and the typical long-term use period. This schedule may contain, but is not required to contain, a table with the following information for each valve:

(i) Plant type (for example, Turf, trees, low water use plants);

(ii) Irrigation type (for example, Sprinklers, Drip Emitters, Bubblers);

(iii) Flow rate in gallons per minute;

(iv) Precipitation Rate in inches per hour (sprinklers only);

(v) Run times in minutes per cycle or per station per day;

(vi) Number of water days per week;

(vii) Cycle time to avoid Runoff; and

(viii) Estimated monthly Outdoor Use water consumption.

4. LANDSCAPE DESIGN STANDARDS. Declarant recommends that the Landscape Plan be based upon the following Landscape Design Standards:

(a) Plant Selection. Plants selected for landscape areas should consist of plants that are well-suited to the microclimate and soil conditions at the Land. Plants with similar water needs should be grouped together as much as possible. A partial list of recommended plant species is included in Exhibit "B" attached hereto. Furthermore, Owners and their landscape designers are encouraged to visit: <http://www.waterwiseplants.utah.gov/> and <http://www.conservewater.utah.gov/> for additional input and guidance. It is recommended that areas landscaped with Turf be minimized.

(b) Transition Areas. For projects located at the interface between urban areas and natural open space (non-irrigated), Extra-Drought Tolerant Plants should be selected that will blend with the native vegetation and are fire resistant or fire retardant. Plants with low fuel volume or high moisture content should be emphasized. Plants that tend to accumulate excessive amount of dead wood or debris should be avoided.

(c) Mulch. After completion of all planting, all irrigated non-Turf areas should be covered with a minimum four inch layer of Mulch to retain water, inhibit weed growth, and moderate soil temperature. Non-porous material should not be placed under the mulch.

(d) Soil Preparation. Soil preparation should be suitable to provide healthy growing conditions for the plants and to encourage water infiltration and penetration. Soil preparation should include scarifying the soil to a minimum depth of six inches and amending the soil with organic material as needed.

5. IRRIGATION DESIGN STANDARDS. Declarant recommends that the Irrigation Plan be based upon the following Irrigation Design Standards:

(a) Automatic Controller. All irrigation systems should include an electric automatic controller with multiple program and multiple repeat cycle capabilities and a flexible calendar program. All controllers should be equipped with an automatic Rain Shut-Off Device.

(b) Distinct Valves. Each valve should irrigate a landscape with similar site, slope and soil conditions and plant materials with similar watering needs. Turf and non-Turf areas should be irrigated on separate valves. Drip Emitters and Bubblers, Spray Sprinklers, and Stream Sprinklers should be placed on separate valves.

(c) Tree Irrigation. Drip Emitters or a Bubbler should be provided for each tree. Bubblers should not exceed 1.5 gallons per minute per device. Bubblers for trees should be placed on a separate valve.

(d) Sprinklers. Sprinklers should have matched Precipitation Rates with each control valve circuit.

(e) Drip Irrigation Lines. Drip irrigation lines are generally located above ground but covered by Mulch. Filters and end flush valves should be provided as necessary.

(f) Irrigation Hours. Valves with Spray Sprinklers or Stream Sprinklers should be scheduled to operate between 6 p.m. and 10 a.m. to reduce water loss from wind and evaporation.

(g) Repeat Cycles. Program valves for multiple repeat cycles should be utilized where necessary to reduce Runoff, particularly on slopes and soils with slow infiltration rates.

6. INDOOR WATER USE. To stay within the Indoor Water Allocation, it is recommended that Owners utilize water conserving appliances and fixtures.

7. TURF LIMITATIONS; PLANTER AREAS. It is recommended that the amount of Turf area should not exceed 3,000 square feet in order to stay within the Overall Water Allocation and avoid water overage fees. The landscaping diagrams attached hereto as Exhibit "C" provide examples of a possible landscaping configurations for typical Lots. Planter areas should conform as closely as possible to the Planting Plan (or requirements of the Planting Plan if a Planting Plan had been prepared).

8. WATER AUDITS. Declarant and/ OMWC shall have the right to perform Water Audits at any time before, during or after the irrigation system and landscape installation, and recommend corrective measures to the applicable Owner to maximize water conservation.

9. PERSONS BOUND BY THIS WATER DECLARATION. The covenants, conditions, and restrictions in Section 2 hereof pertaining to water allocations shall run with the land, and all Owners, purchasers or occupants thereof shall, by acceptance of contracts or deeds, possession or occupancy, be conclusively deemed to have consented and agreed with the present and future Owner(s) of each Lot and Declarant, and with their respective successors and assigns to conform to and observe the covenants, conditions, restrictions and stipulations set forth in Section 2 of this Water Declaration. All other provisions of this Declaration are intended by Declarant to be non-binding guidelines and recommendations.

10. DURATION. The provisions of this Water Declaration shall be and remain effective in perpetuity.

11. AMENDMENT. This Water Declaration may be changed, altered or amended, at any time by the affirmative action of the Owners of 67% of the eligible votes of Owners of Lots within the Plat, using the voting procedures as outlined in the Master Declaration. Any amendment so authorized shall be accomplished through the recordation with the Official Records of an instrument executed by the Association (as defined in Section 1.2 of the Master Declaration). In such instrument, the Association shall certify that the vote required by this Section for amendment has occurred, and, if approval of a specified percentage of eligible mortgagees is required for such amendment, that such approval has been obtained.

EXHIBIT "A"

TO WATER DECLARATION

LEGAL DESCRIPTION FOR THE LAND

The following parcel located in Tooele County, State of Utah:

Beginning at a point which lies South 00°18'28" West along the section line 343.69 feet to the south right-of-way line of Sunset Road and South 89°11'19" East along said south line 74.92 feet from the Northwest Corner of Section 1, Township 2 South, Range 4 West, Salt Lake Base and Meridian, Tooele County, Utah, (basis of bearing being South 00°18'28" West between the Northwest Corner and West Quarter Corner of Section 1, T2S, R4W), and running thence South 89°11'19" East along said south line 195.54 feet; thence South 00°26'06" West 142.91 feet; thence South 00°17'46" West 170.44 feet; thence South 00°14'29" West 110.00 feet; thence South 00°37'03" West 60.00 feet; thence South 00°52'39" West 500.20 feet; thence South 00°06'04" East 60.00 feet; thence South 00°17'07" East 109.83 feet; thence South 89°42'14" East 36.57 feet; thence South 00°17'46" West 120.26 feet; thence South 43°41'56" East 68.56 feet; thence southwesterly along the arc of a 20.00 foot radius non-tangent curve to the left, the center of which bears South 00°47'29" West, through a central angle of 131°36'12" a distance of 45.94 feet; thence South 40°48'43" East 102.56 feet; thence South 89°42'14" East 168.07 feet; thence South 85°57'06" East 60.10 feet; thence South 89°16'00" East 137.00 feet; thence South 00°44'00" West 328.85 feet; thence southerly along the arc of a 1,988.39 foot radius non-tangent curve to the left, the center of which bears South 80°08'54" East, through a central angle of 06°04'56" a distance of 211.07 feet to the northeast corner of Parcel A as defined in Pastures at Saddleback P.U.D. Plat 2 as recorded in the office of the Tooele County Recorder as Entry No. 402261; thence along the north line of said Plat 2 and the extension thereof North 67°31'15" West 199.27 feet to the east line of Lot 1, Ally Acres Minor Subdivision recorded in the office of the Tooele County Recorder as Entry No. 318694; thence along said Lot 1 the following two courses and distances: 1) northerly along the arc of a 240.00 foot radius non-tangent curve to the left, the center of which bears North 67°37'30" West, through a central angle of 17°33'06" a distance of 73.52 feet and 2) North 89°28'45" West 114.62 feet; thence North 00°31'15" East 75.30 feet; thence North 42°50'27" West 515.00 feet; thence North 31°29'00" West 203.96 feet to the section line; thence North 00°18'28" East along the section line 424.39 feet; thence North 00°52'39" East 333.96 feet; thence North 00°14'29" East 327.48 feet; thence North 15°55'25" East 33.82 feet; thence North 27°10'01" East 59.59 feet; thence North 45°36'51" East 50.57 feet to the point of beginning.

Containing 569,616 Square Feet or 13.077 Acres, 37 Lots, 4 Open Space Parcels, and 6 streets.

Tooele County Tax Parcel No 05-016-0-0028 29

EXHIBIT "B"

TO WATER DECLARATION

List of Recommended Landscape Plant Species

[SEE ATTACHED]

WATER-WISE PLANTS FOR UTAH

The following plant list was compiled by the Utah Water-Wise Plants Committee for use with its **Water-Wise Plant Tagging Program**. Please use this list to find plants that are appropriate for Utah's climate and conditions. For specific plant information and design ideas please visit www.waterwiseplants.utah.gov.

ALPHA BY LATIN NAME

CONIFEROUS TREES

<i>Abies concolor</i>	White Fir	<i>Pinus aristata</i>	Bristlecone Pine
<i>Calocedrus decurrens</i>	Incense Cedar	<i>Pinus edulis</i>	Pinyon Pine
<i>Cedrus atlantica glauca</i>	Blue Atlas Cedar	<i>Pinus flexilis</i>	Limber Pine
<i>Cedrus libani</i>	Cedar of Lebanon	<i>Pinus monophylla</i>	Single-Needled Pinyon
<i>Cupressus arizonica</i>	Arizona Cypress	<i>Pinus nigra</i>	Austrian Pine
<i>Juniperus osteosperma</i>	Utah Juniper	<i>Pinus ponderosa</i>	Ponderosa Pine
<i>Juniperus scopulorum</i>	Rocky Mountain Juniper	<i>Pinus sylvestris</i>	Scotch Pine

DECIDUOUS TREES

<i>Acer campestre</i>	Hedge Maple	<i>Gymnocladus dioicus</i>	Kentucky Coffee Tree
<i>Acer ginnala</i>	Amur Maple	<i>Koelreuteria paniculata</i>	Goldenrain Tree
<i>Acer grandidentatum</i>	Bigtooth Maple	<i>Maclura pomifera</i>	Osage Orange
<i>Acer tataricum</i>	Tatarian Maple	<i>Parrotia persica</i>	Persian Ironwood
<i>Acer truncatum</i>	Shantung Maple	<i>Ptelea trifoliata</i>	Hop Tree
<i>Amelanchier sp.</i>	Serviceberry	<i>Quercus gambelii</i>	Gambel Oak
<i>Catalpa speciosa</i>	Western Catalpa	<i>Quercus macrocarpa</i>	Bur Oak
<i>Celtis occidentalis</i>	Common Hackberry	<i>Quercus muehlenbergii</i>	Chinkapin Oak
<i>Chilopsis linearis</i>	Desert Willow	<i>Robinia neomexicana</i>	New Mexico Locust
<i>Corylus columa</i>	Turkish Filbert	<i>Sophora japonica</i>	Japanese Pagoda Tree
<i>Cotinus obovatus</i>	American Smoke Tree	<i>Syringa reticulata</i>	Japanese Lilac Tree
<i>Crataegus douglasii</i>	Douglas Hawthorne	<i>Ulmus parvifolia (parviflora)</i>	Lacebark/Chinese Elm
<i>Fraxinus anomala</i>	Single-Leaf Ash	<i>Zelkova serrata</i>	Zelkova
<i>Ginkgo biloba</i>	Ginkgo		

SHRUBS

<i>Agave utahensis</i>	Utah Agave	<i>Krascheninnikovia lanata</i>	Winterfat
<i>Amorpha canescens</i>	Leadplant	<i>Mahonia aquifolium</i>	Oregon Grape
<i>Artemisia cana</i>	Silver Sage	<i>Mahonia fremontii</i>	Fremont Holly
<i>Artemisia filifolia</i>	Sand Sage	<i>Peraphyllum ramosissimum</i>	Sqaw Apple
<i>Artemisia frigida</i>	Fringed Sage	<i>Philadelphus microphyllus</i>	Littleleaf Mockorange
<i>Artemisia nova</i>	Black Sage	<i>Physocarpus malvaceus</i>	Mallow-leaved Ninebark
<i>Artemisia tridentata</i>	Big Sage	<i>Physocarpus opulifolius</i>	Ninebark
<i>Atriplex canescens</i>	Fourwing Saltbrush	<i>Pinus mugo</i>	Mugo Pine
<i>Atriplex confertifolia</i>	Shadscale	<i>Potentilla fruticosa</i>	Shrubby Cinquefoil
<i>Buddleia davidii</i>	Butterfly Bush	<i>Prunus pumila v. besseyi</i>	Sand Cherry
<i>Caragana arborescens</i>	Siberian Peashrub	<i>Purshia mexicana</i>	Cliffrose
<i>Caryopteris x clandonensis</i>	Blue Mist Spirea	<i>Quercus turbinella</i>	Shrub Live Oak
<i>Ceanothus martinii</i>	Utah Mountain Lilac	<i>Rhus aromatica</i>	Fragrant Sumac
<i>Cercocarpus intricatus</i>	Little-Leaf Mtn Mahogany	<i>Rhus glabra</i>	Smooth Sumac
<i>Cercocarpus ledifolius</i>	Curl-Leaf Mtn Mahogany	<i>Rhus trilobata</i>	Squawbush
<i>Cercocarpus montanus</i>	Alder-Leaf Mtn Mahogany	<i>Rhus typhina</i>	Staghorn Sumac
<i>Chamaebatiaria millefolium</i>	Fernbush	<i>Ribes aureum</i>	Golden Currant
<i>Cotinus coggygria</i>	Smoke Bush	<i>Rosa glauca (rubrifolia)</i>	Shrub Rose
<i>Cotoneaster apiculatus</i>	Cranberry Cotoneaster	<i>Rosa rugosa</i>	Rugosa Rose
<i>Cotoneaster dammeri</i>	Bearberry Cotoneaster	<i>Rosa woodsii</i>	Woods Rose
<i>Cotoneaster divaricatus</i>	Spreading Cotoneaster	<i>Rubus deliciosus</i>	Rocky Mtn Thimbleberry
<i>Cotoneaster horizontalis</i>	Rock Cotoneaster	<i>Salvia dorrii</i>	Dorr Sage
<i>Cytisus scoparius</i>	Scotch Broom	<i>Shepherdia argentea</i>	Silver Buffaloberry
<i>Ephedra viridis</i>	Green Mormon Tea	<i>Sorbaria sorbifolia</i>	False Spirea
<i>Ericameria nauseosus</i>	Rubber Rabbitbrush	<i>Symphoricarpos orbiculatus</i>	Coralberry
<i>Fallugia paradoxa</i>	Apache Plume	<i>Symphoricarpos oreophilus</i>	Mountain Snowberry
<i>Forestiera neomexicana</i>	New Mexican Privet	<i>Symphoricarpos x chenaultii</i>	Snowberry
<i>Genista hispanica</i>	Spanish Broom	<i>Syringa vulgaris</i>	Lilac
<i>Genista pilosa</i>	Silky-Leaf Broom	<i>Viburnum lantana</i>	Wayfaring Tree
<i>Genista tinctoria</i>	Common Woadwaxen	<i>Viburnum rhytidophyloides</i>	Blackhaw
<i>Holodiscus dumosus</i>	Mountain Spray	<i>Viburnum rhytidophyllum</i>	Leather-Leaf Viburnum
<i>Iliamna rivularis</i>	Maple Mallow	<i>Yucca sp.</i>	Yucca
<i>Juniperus sp.</i>	Juniper	<i>Zizophora clinopodioides</i>	Blue Mint Bush
<i>Kolkwitzia amabilis</i>	Beauty Bush		

PERENNIALS

<i>Achillea filipendula</i> 'Gold Plate'	'Gold Plate' Yarrow	<i>Hesperaloe parvifolia</i>	Red Yucca
<i>Achillea millefolium</i>	Common Yarrow	<i>Heuchera</i> sp.	Coral Bells
<i>Achillea tomentosa</i>	Woolly Yarrow	<i>Hymenoxis acaulis</i>	Sundancer Daisy
<i>Achillea</i> x 'Coronation Gold'	'Coronation Gold' Yarrow	<i>Iberis sempervirens</i>	Candytuft
<i>Achillea</i> x 'Moonshine'	'Moonshine' Yarrow	<i>Iris</i> sp.	Iris
<i>Aethionema schistosum</i>	Stonecress	<i>Kniphofia uvaria</i>	Red-Hot Poker/Torch Lily
<i>Agastache rupestris</i>	Sunset Hyssop	<i>Lavandula angustifolia</i>	English Lavender
<i>Alchemilla</i> sp.	Lady's Mantle	<i>Leucojum aestivum</i>	Summer Snowflake
<i>Allium</i> sp.	Allium/Ornamental Onion	<i>Liatris punctata</i>	Dotted Blazing-Star
<i>Amsonia tabernaemontana</i>	Willow Blue Star	<i>Liatris scariosa</i>	Tall Gayfeather
<i>Anacyclus depressus</i>	Mount Atlas Daisy	<i>Liatris spicata</i>	Spike Gayfeather
<i>Anaphalis margaritacea</i>	Pearly Everlasting	<i>Limonium latifolium</i>	Sea Lavender
<i>Aquilegia</i> sp.	Columbine	<i>Linum lewisii</i>	Lewis Flax
<i>Arabis caucasica</i>	Rock Cress	<i>Linum perenne</i>	Blue Flax
<i>Arenaria macradenia</i>	Showy Sandwort	<i>Melampodium leucanthum</i>	Blackfoot Daisy
<i>Armeria maritima</i>	Sea Pinks/Thrift	<i>Mirabilis multiflora</i>	Desert Four O'Clock
<i>Asclepias tuberosa</i>	Butterfly Weed	<i>Monardella odoratissima</i>	Little Bee Balm
<i>Aster</i> x <i>frikartii</i> 'Monch'	'Monch' Aster	<i>Narcissus</i> sp.	Daffodils/Narcissus
<i>Aster</i> x <i>frikartii</i> 'Wonder of Staffa'	'Wonder of Staffa' Aster	<i>Nepeta</i> x <i>faassenii</i>	Catmint
<i>Astragalus</i> sp.	Utah Ladyfinger	<i>Oenothera caespitosa</i>	White Evening Primrose
<i>Aubrieta hybrids</i>	Purple Rock Cress	<i>Oenothera howardii</i>	Bronze Evening Primrose
<i>Aurinia saxatilis</i>	Basket-of-Gold	<i>Oenothera macrocarpa</i>	Missouri Evening Primrose
<i>Baileya multiradiata</i>	Desert Marigold	<i>Oenothera pallida</i>	Pale Evening Primrose
<i>Ballota pseudodictamnus</i>	Horehound	<i>Origanum</i> sp.	Oregano
<i>Bergenia cordifolia</i>	Bergenia	<i>Papaver orientale</i>	Oriental Poppy
<i>Berlandiera lyrata</i>	Chocolate Flower	<i>Penstemon barbatus</i>	Common Beardtongue
<i>Brodiaea</i> sp.	Brodiaea	<i>Penstemon caespitosus</i>	Mat Penstemon
<i>Callirhoe involucrata</i>	Poppy Mallow/Wine Cups	<i>Penstemon cobaea</i>	Foxglove Penstemon
<i>Calylophus</i> sp.	Sundrops	<i>Penstemon cyananthus</i>	Wasatch Penstemon
<i>Castilleja</i> sp.	Indian Paint Brush	<i>Penstemon eatonii</i>	Firecracker Penstemon
<i>Catananche caerulea</i>	Cupid's Dart	<i>Penstemon mexicali hybrids</i>	Mexicali Penstemon
<i>Centranthus ruber</i>	Jupiter's Beard	<i>Penstemon palmeri</i>	Palmer Penstemon
<i>Colchicum autumnale</i>	Autumn Crocus	<i>Penstemon pinifolius</i>	Pine-Leaf Penstemon
<i>Coreopsis grandiflora</i>	Large-flowered Coreopsis	<i>Penstemon pseudospectabilis</i>	Canyon Penstemon
<i>Coreopsis verticillata</i>	Thread-Leaf Coreopsis	<i>Penstemon rostriflorus</i>	Bridges Penstemon
<i>Corydalis lutea</i>	Yellow Corydalis	<i>Penstemon sepalulus</i>	Littlecup Penstemon
<i>Crocus</i> sp.	Crocus	<i>Penstemon strictus</i>	Rocky Mtn Penstemon
<i>Delosperma</i> sp.	Ice Plant	<i>Penstemon utahensis</i>	Utah Penstemon
<i>Dianthus deltoides</i>	Maiden Pinks	<i>Penstemon whippleanus</i>	Whipple's Penstemon
<i>Dianthus gratianopolitanus</i>	Cheddar Pinks	<i>Perovskia atriplicifolia</i>	Russian Sage
<i>Dianthus plumarius</i>	Cottage Pinks	<i>Phlomis</i> sp.	Jerusalem Sage
<i>Dianthus</i> x <i>allwoodii</i>	Border Pinks	<i>Potentilla</i> sp.	Cinquefoil/Potentilla
<i>Diascia integerrima</i> 'Coral Canyon'	'Coral Canyon' Twinspur	<i>Psilostrophe tagetina</i>	Paper Flower
<i>Dictamnus albus</i>	Gas Plant	<i>Pulsatilla vulgaris</i>	Pasqueflower
<i>Echinops ritro</i>	Globe Thistle	<i>Ratibida columnifera</i>	Mexican Hat
<i>Epimedium</i> sp.	Barrenwort	<i>Salvia aurea</i>	Blue Sage
<i>Erigeron compositus</i>	Fernleaf Fleabane	<i>Salvia nemorosa</i>	Violet Sage
<i>Erigeron speciosus</i>	Showy Fleabane	<i>Salvia officinalis</i>	Garden Sage
<i>Eriogonum heracleoides</i>	Hercules Buckwheat	<i>Santolina</i> sp.	Cotton Lavender
<i>Eriogonum jamesii</i>	James Buckwheat	<i>Scabiosa caucasica</i>	Pincushion Flower
<i>Eriogonum ovalifolium</i>	Silver Buckwheat	<i>Sedum acre</i>	Gold Moss Sedum
<i>Eriogonum umbellatum</i>	Sulfur Buckwheat	<i>Sedum kamtschaticum</i>	Kamtschatka Stonecrop
<i>Erygium amethystinum</i>	Amethyst Sea Holly	<i>Sedum spurium</i>	Two-Row Stonecrop
<i>Gaillardia aristata</i>	Blanket Flower	<i>Sedum</i> x 'Autumn Joy'	'Autumn Joy' Sedum
<i>Gaillardia pinnatifolia</i>	Hopi Blanket Flower	<i>Sempervivum tectorum</i>	Hens and Chicks
<i>Gaillardia</i> x <i>grandiflora</i>	Blanket Flower	<i>Smilacina racemosa</i>	False Solomon Seal
<i>Gaura lindheimeri</i>	Gaura	<i>Sphaeralcea</i> sp.	Desert Globemallow
<i>Geranium endressii</i>	Endress Cranesbill	<i>Tetraneuris (Hymenoxys) acaulis</i>	Sundancer Daisy
<i>Geranium macrorrhizum</i>	Bigroot Cranesbill	<i>Teucrium chamaedrys</i>	Germander
<i>Geranium sanguineum</i>	Bloody Cranesbill	<i>Tithonia rotundifolia</i>	Mexican Sunflower
<i>Geranium viscosissimum</i>	Sticky Geranium	<i>Tulipa</i> sp.	Tulip
<i>Gypsophila paniculata</i>	Baby's Breath	<i>Veronica spicata</i>	Spike Speedwell
<i>Hedysarum boreale</i>	Utah Sweetvetch	<i>Viguiera multiflora</i>	Showy Goldeneye
<i>Helenium hoopesii</i>	Orange Sneezeweed	<i>Zauschneria</i> sp.	Hummingbird Flower
<i>Helianthemum nummularium</i>	Sun Rose	<i>Zinnia grandiflora</i>	Desert Zinnia
<i>Hemerocallis hybrid</i>	Daylily		

GROUNDCOVERS

<i>Antennaria</i> sp.	Pussytoes	<i>Erigeron flagellaris</i>	Trailing Fleabane
<i>Arctostaphylos uva-ursi</i>	Bearberry	<i>Hypericum calycinum</i>	St. Johns Wort
<i>Cerastium tomentosum</i>	Snow-in-Summer	<i>Juniperus horizontalis</i>	Horizontal Juniper

Mahonia repens
Phlox subulata
Stachys byzantina

Creeping Mahonia
Creeping Phlox
Lamb's Ear

Thymus sp.
Veronica liwanensis
Veronica prostrata

Thyme
Turkish Veronica
Creeping Veronica

GRASSES

Achnatherum hymenoides
Andropogon gerardii
Aristida purpurea
Arundo donax
Bouteloua curtipendula
Bouteloua gracilis
Buchloe dactyloides
Calamagrostis acutiflora
Deschampsia caespitosa
Festuca ovina glauca (cinerea)
Helictotrichon sempervirens

Indian Rice Grass
Big Bluestem
Purple Three-Awn
Giant Reed Grass
Sideoats Grama Grass
Blue Grama Grass
Buffalograss
Feather Reed Grass
Tufted Hair Grass
Blue Fescue
Blue Oat Grass

Hesperostipa comata
Leymus cinereus
Miscanthus sinensis
Molina sp.
Nassella (Stipa) tenuissima
Panicum virgatum
Saccharum (Erianthus) ravennae
Schizachyrium scoparium
Sorghastrum nutans
Sporobolus airoides

Needle-and-Thread Grass
Great Basin Wildrye
Maiden Grass
Purple Moor Grass
Mexican Feather Grass
Switch Grass
Ravenna Grass
Little Bluestem
Indian Grass
Alkali Sacaton Grass

VINES

Campsis radicans
Clematis ligusticifolia
Clematis tangutica

Trumpet Vine
White Virgins-Bower
Golden Clematis

Polygonum aubertii
Wisteria floribunda

Silverlace Vine
Japanese Wisteria

CACTI

Dasyllirion wheeleri
Echinocereus engelmannii
Echinocereus triglochidiatus
Opuntia basilaris

Sotol/Desert Spoon
Engelmann Hedgehog
Clarecup Cactus
Beavertail Cactus

Opuntia erinacea
Opuntia phaeacantha
Opuntia polyacantha

Hedgehog Prickly Pear
Prickly Pear Cactus
Plains Prickly Pear Cactus

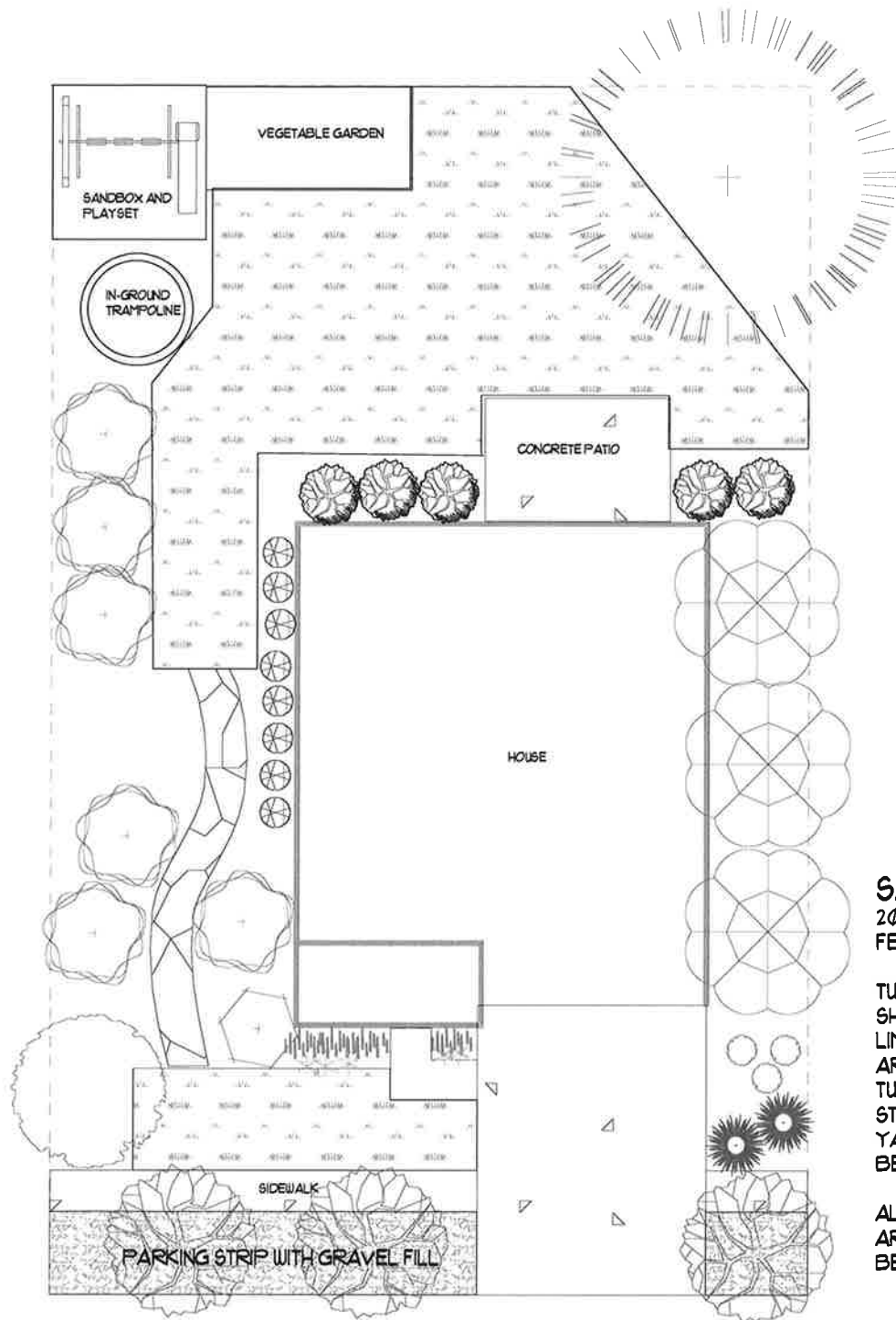
Brought to you by:

- Utah Division of Water Resources
- Utah State University Center for Water-Efficient Landscaping
- Central Utah Water Conservancy District
- Utah Water Conservation Forum
- Washington County Water Conservancy District
- Jordan Valley Water Conservancy District
- US Bureau of Reclamation

- Utah State University Extension
- Utah Nursery and Landscape Association
- Utah Botanical Center
- Red Butte Garden
- Salt Lake City Corporation
- Utah Native Plant Society
- Wasatch Community Gardens




EXHIBIT "C"
TO WATER DECLARATION
Sample Landscape Designs
[SEE ATTACHED]

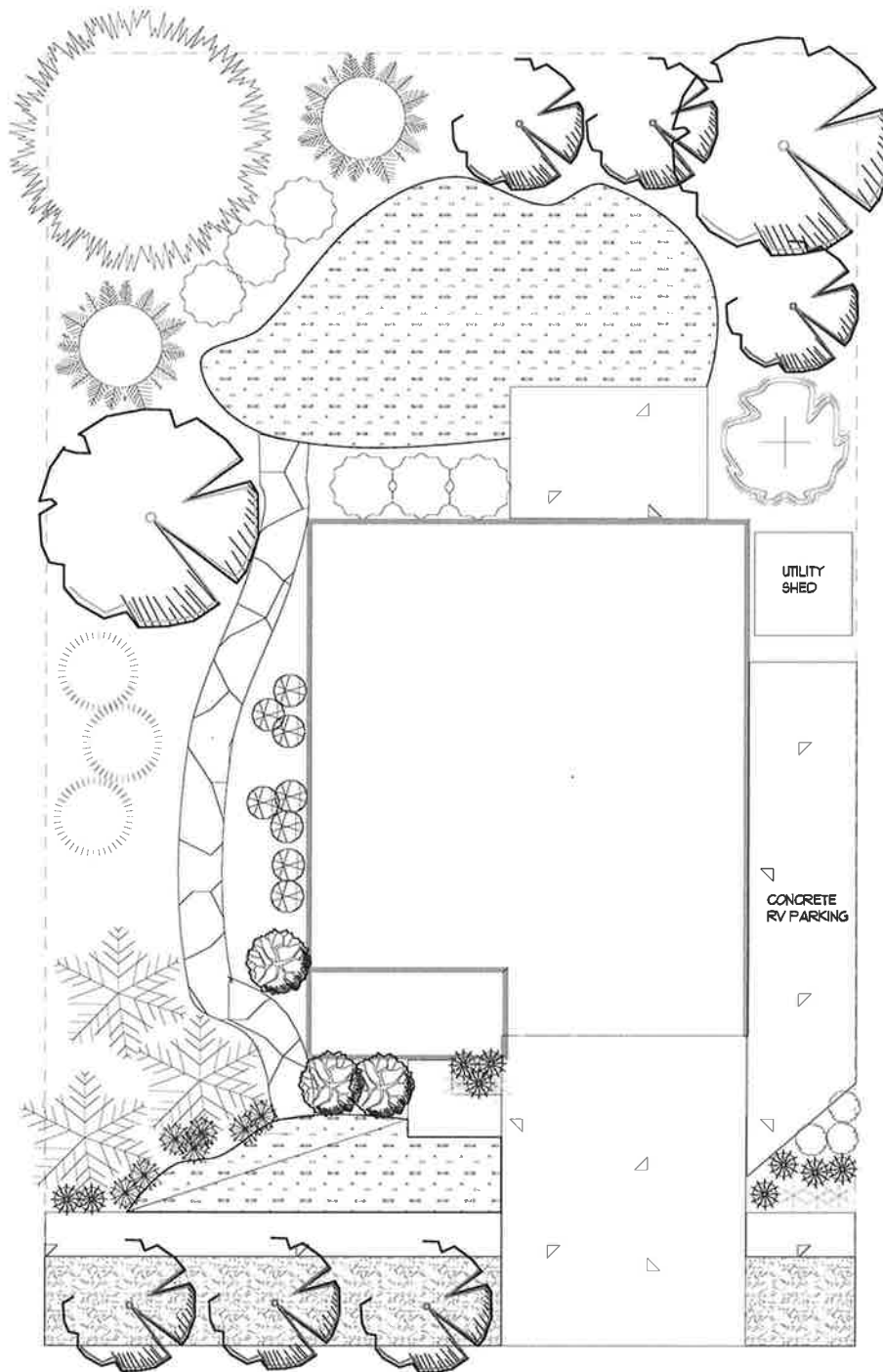


SAMPLE A
 2000 SQUARE
 FEET TURF

TURF AREAS
 SHOULD BE
 LIMITED TO
 AREAS OF USE.
 TURF IN PARK
 STRIP AND SIDE
 YARDS SHOULD
 BE OMITTED.

ALL NON-TURF
 AREAS SHALL
 BE MULCHED

Revision #: 001	Scale: 1/16" = 1'	Landscape Plan: Sample A	Landscape Design by: Jennie Hoover
Date: 5/22/2017		Pastures at Saddleback Plat 5	



UTILITY SHED

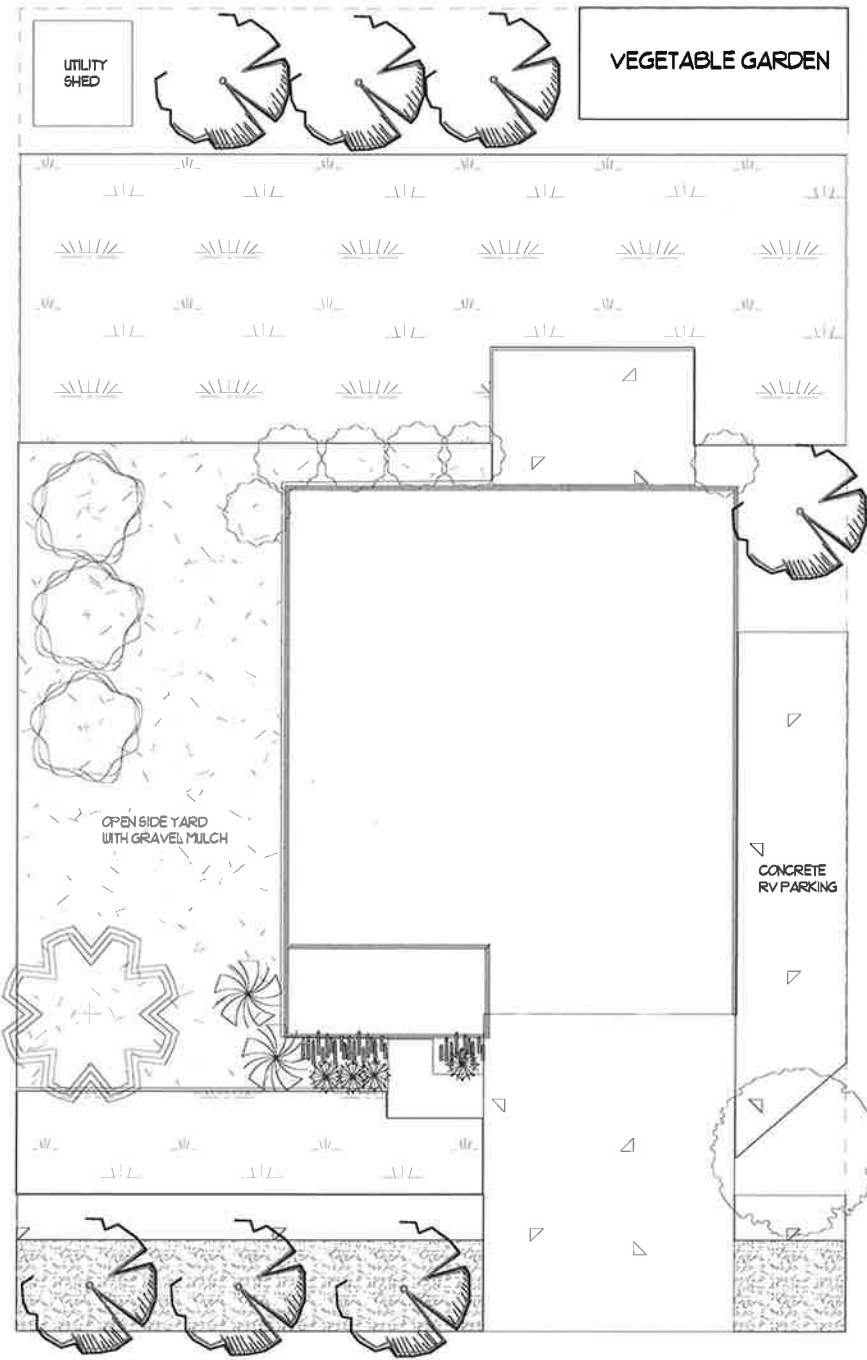
CONCRETE RV PARKING

**SAMPLE B
1500 SQUARE
FEET TURF**

**LIMIT TURF TO
USABLE AREAS**

**TURF SHOULD BE
OMITTED FROM
PARK STRIP**

Revision #: 001	Scale:	Landscape Plan: Sample B	Landscape Design by: Jennie Hoover
Date: 5/22/2017	1/16" = 1'	Pastures at Saddleback Plat 5	



SAMPLE C
 2200 SQUARE FEET TURF
 TURF SHOULD BE LIMITED TO AREAS OF USE
 TURF IN PARK STRIP SHOULD BE OMITTED

Revision #: 001	Scale:	Landscape Plan: Sample C	Landscape Design by: Jennie Hoover
Date: 5/22/2017	1/16" = 1'	Pastures at Saddleback Plat 5	