

**When an emergency strikes
you need quick, reliable and
expert care.....**

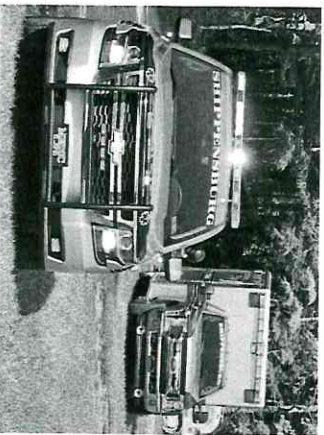
We are here for you.

But we need your help.

Your paid Subscription is essential to ensure we can continue to provide life saving service to you and your loved ones. We have the most highly trained personnel and best equipment. Our success is because of your support.

Your Subscription saves you money by taking the place of non-covered medically necessary expenses. But just as important it helps us purchase vital equipment and training so that we are there in your time of need. Please remember we are not a tax supported service and we rely on you to maintain the high-quality service our community needs.

Protect your family and subscribe today!



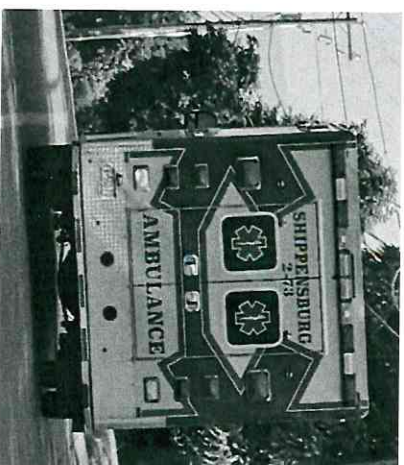
Your Local Ambulance Needs your help!

Our Team of dedicated Providers stand ready to protect you. Now we need your help. Sign up today for your **2025** ambulance membership.

For only a **\$100** subscription **everyone** in your household can be covered until

December 31, 2025

**Paying by Credit
Card?
No Problem!
Call Today**



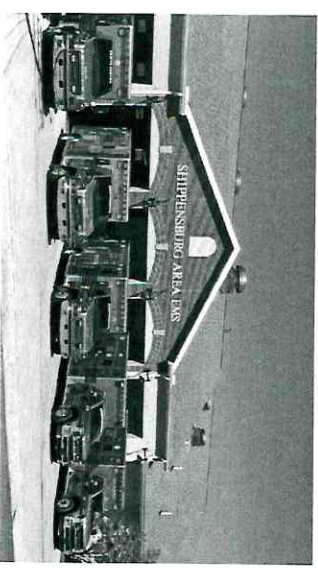
SA-EMS Operates a fleet of 4 Ambulances, Two Advanced Life Support Interceptors and a Special Services Unit to ensure our community is safe.

WWW.SA-EMS.ORG

Shippensburg Area Emergency Medical Services, Inc.

"Your Hometown Ambulance"

711 E. Orange St
Shippensburg, PA 17257
Emergency Call 9-1-1
Headquarters (717) 532-6069



Our Commitment to You

Our team stands ready to answer your call 24 hours a day seven days a week. Comprised of career and volunteer members we have dedicated ourselves to providing the best possible care to you and your loved ones. Please help by partnering with us to ensure we can always be there for you.

SAEMS not only provides emergency transport but also is available to stand by at community events to ensure rapid, life saving treatment is available anywhere, anytime.

The official registration and financial information of SAEMS may be obtained from the PA Department of State by calling toll-free, within PA, 1-800-732-0899. Registration does not imply endorsement.

During an emergency the last thing you want to worry about is a bill....

Our Subscription program helps you avoid the skyrocketing cost of medical care.

I have insurance, why should I subscribe?

Most insurance companies do not pay 100% of ambulance costs. In addition to your deductible or co-pay you could be responsible for certain charges. Your \$100 subscription ensures you will not be responsible for any medically necessary and reasonable emergency ground ambulance transport to the closest appropriate hospital provided by our service. In fact, individuals must have health insurance to be eligible. SAEEMS recognizes and will bill all health insurance plans including Amish / Mennonite Aid. Medical necessity requires that the patient could not have been safely transported by means other than by an ambulance. Each ambulance transport is evaluated to establish whether it meets these criteria.

How does it work?

We will bill your insurance company for the cost of medically necessary and reasonable emergency ground ambulance services to the closest appropriate facility we provide to you. We will then accept their payment and you are not responsible for any charges not covered. Whether the balance is \$100 or \$1,000 you have the peace of mind in knowing you are protected.

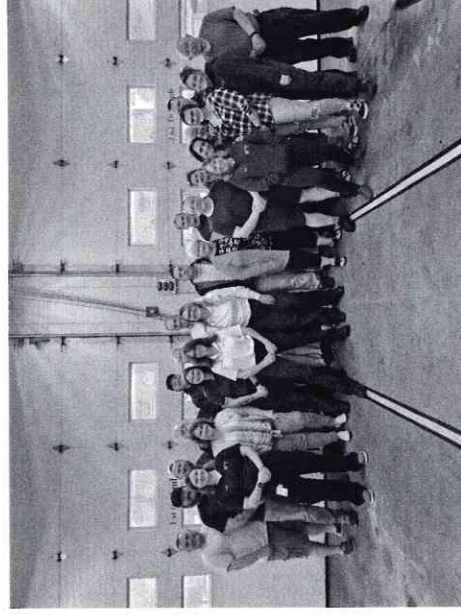
What if I don't subscribe?

We will bill your insurance for any services provided. After receiving payment you will be responsible for any outstanding portion. As many insurance companies have a limited ambulance benefit the cost of one transport could pay your Subscription for years to come.

Who are We?

We are husbands and wives, grandparents and grandchildren, children, students, teachers and neighbors; stepping into the front line of the pandemic.....

But most important we are your professional EMS team dedicated to providing you the best possible service. We have committed ourselves to countless hours of training, raised funds to purchase the best equipment and taken time from our families so that we can answer your call.



Did you know we offer many different levels of training?

Community & Provider Based

Email Us Today To Schedule training@sa-ems.org or Call 717-532-6069 Ext: 122

What does it cost for Shippensburg Area EMS to operate?

We want to provide you with the very best service. Providing healthcare service is very expensive, and we rely heavily on your support. Every year insurance reimbursements decline. In fact Medical Assistance has not increased ambulance reimbursement since 2004.

- A new unequipped ambulance is \$300,000
- A cardiac monitor is \$47,000
- A new paramedic costs \$10,000 to train

This is why we need YOUR help to keep our community safe. Your Subscription provides vital funding to help ensure we can maintain the training and equipment needed to protect you and your loved ones.

Payment Liabilities Not Covered Under this Subscription Program

- Transports which do not meet criteria for medical necessity or reasonableness
- Charges related to mileage beyond the closest appropriate facility
- Non-transport/refusal of transport
- Non-emergency routine ambulance or wheelchair transport service
- In the rare event an SAEEMS unit is not available, you may receive a bill for service if the transporting company does not honor our subscription. We currently have joint agreements with Newville, Pleasant Hall, Carlisle, Mont Alto, Greencastle and Fayetteville.

Disclaimers

- This subscription program is not a contract for the provision of ambulance services.
- This is not a solution for the offer or sale of an insurance product. A SAEEMS Subscription is not an insurance policy and cannot be considered as secondary insurance coverage or as supplemental coverage to any insurance policy.
- Subscriptions provide protection against SAEEMS emergency ground ambulance costs that exceed a subscriber's health insurance or medical benefits.
- This subscription program does not cover the provision of air ambulance service or non-emergency ground ambulance services which have been or should have been pre-scheduled.
- Becoming a subscriber does not grant any voting or participation rights in SAEEMS corporate activities.
- The terms & provisions of this subscription program are subject to change without notice.
- Medicare and other beneficiaries may be billed for copayments or deductibles if required by law.
- All subscriptions are subject to acceptance by SAEEMS and may be cancelled or revoked at SAEEMS' sole discretion.
- The subscriber acknowledges that SAEEMS will bill available third-party insurance for services rendered and agrees to remit any third-party insurance payments received directly by the subscriber to SAEEMS.
- By submitting an application or renewing an existing subscription, the subscriber agrees to these terms and conditions.