

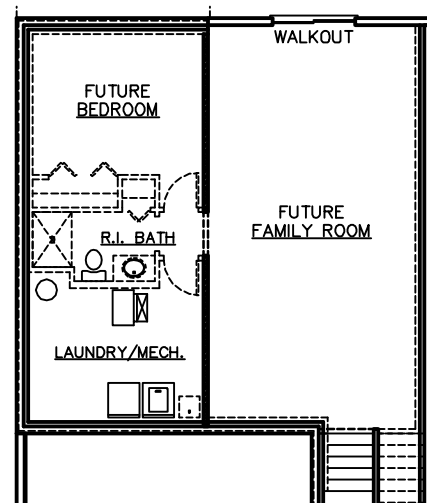
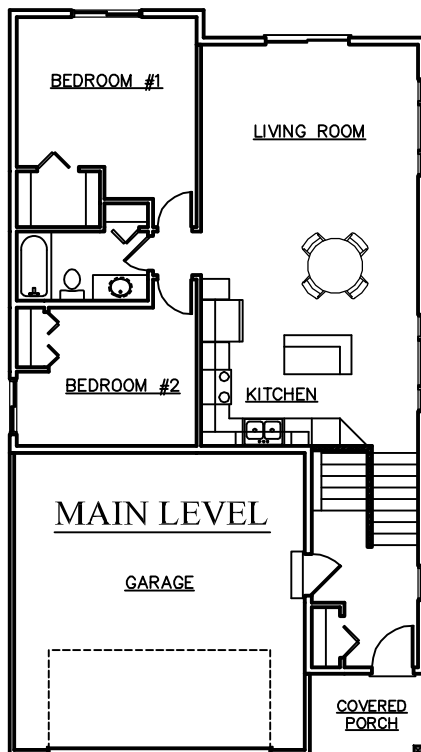


\*SOME OPTIONS MAY BE SHOWN\*

- \* 2-3 BEDROOMS, 1-2 BATHROOMS
- \* 1,066 - 1,739 SQUARE FEET
- \* OPEN FLOOR PLAN
- \* VAULTED CEILINGS
- \* WALK-IN-CLOSET
- \* COVERED FRONT PORCH
- \* WALKOUT LOWER LEVEL

ROOM SIZES

BEDROOM #1	13' X 10'-10"
BEDROOM #2	10'-8" X 10'
LIVING ROOM	15'-8" X 12'
DINING	13'-8" X 9'
KITCHEN	13'-8" X 8'
FUTURE FAMILY ROOM	15' X 28'-4"
FUTURE BEDROOM #3	12'-4" X 10'-10"



LOWER LEVEL



3475 Vermillion Street, Suite 101 ~ Hastings, MN 55033 ~ 651.437.3700 ~ www.gregjhomes.com

Plans and specifications are subject to change without notice. Copyright Greg J Homes of Hastings Inc. 2019