

SOYBEANS

S15-P1 BRAND

RM:
1.5



SCN
SOLUTIONS.

TOP-END YIELDS COMBINED WITH EXCELLENT AGRONOMICS

- Solid Soybean Cyst Nematode protection
- Outstanding Iron Deficiency Chlorosis tolerance
- Strong Sclerotinia White Mold resistance

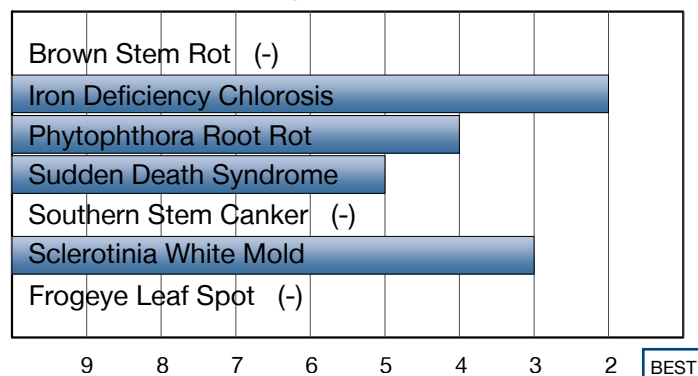
Plant Characteristics

Plant Height	Medium
Canopy/Plant Type	Medium
Branching	Moderate
Growth Habit	Indeterminate
Flower Color	Purple
Pubescence Color	Light Tawny
Pod Color	Tan
Hilum Color	Black

Agronomic Traits

Emergence	2
Standability	4
Shatter Tolerance	-
Stress Tolerance	3
Green Stem	2
Estimated Seed Size	Medium-Large
% Protein at 13% mst.	37.7
% Oil at 13% mst.	19.7
Narrow Rows	2
Wide Rows	2

Disease Ratings



Adaptation to Soil Types

Drought Prone	★
High pH*	★
Highly Productive	★
Moderate/Variable Environments	★
Poorly Drained	●

Diseases and Pests

Phytophthora Root Rot (PRR) Source	Rps1c
Soybean Cyst Nematode (SCN) Races	MR3, MR14
(SCN) Source	PI88788

For more information or to view product performance data: www.nk-us.com (800) 258-0521 Or, follow NK on Twitter @SyngentaUS or Facebook (Facebook.com/FarmAssist).

 **Soybeans**

syngenta[®]

Ratings are based on interpretation of data gathered by Syngenta and/or observations across areas of adaptation and may change as additional data are gathered.

©2015 Syngenta, NK®, SCN Solutions™, the Alliance Frame and Syngenta logo are trademarks of a Syngenta Group Company. Genuity®, Genuity and Design, Genuity Icons, and Roundup Ready 2 Yield® are registered trademarks of Monsanto Technology LLC used under license. NK Soybean varieties are protected under granted or pending U.S. or Canadian variety patents and other intellectual property rights, regardless of the trait(s) within the seed. Seeds containing the Genuity® Roundup Ready 2 Yield® trait may be protected under numerous United States and Canadian patents. It is unlawful to save Genuity® Roundup Ready 2 Yield® soybeans for planting or transfer to others for use as a planting seed.

1-9 Scale: 1 = Best, 9 = Worst, (-) = Not Available, NA = Not Applicable.

Icon Scale: ★ Best Choice ● Good Choice ▼ Average to Slightly Below Average ✖ Not Recommended

* Rating represents an assessment of stand establishment, chlorosis severity and yield performance