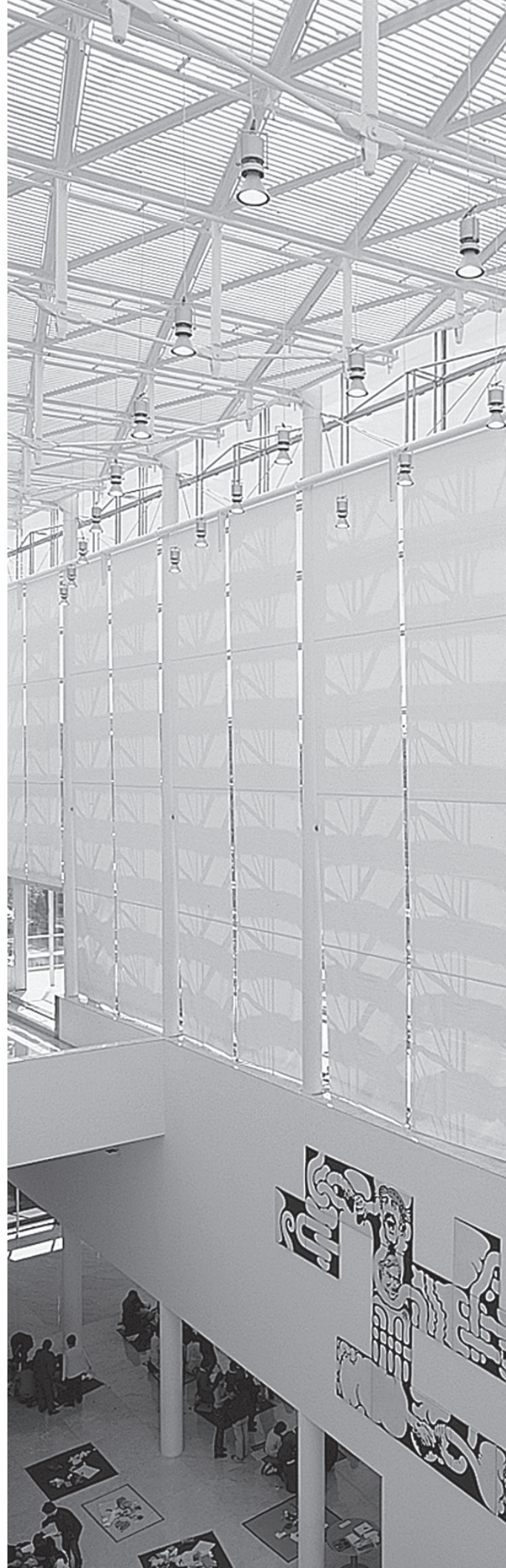




Quality Wholesale Window Coverings
Contract • Hospitality • Healthcare • Residential

INFINITY₂[®] SUSTAINABLE FABRIC

WEAVING
EXCELLENCE
WITH
INNOVATION



Benefits of Infinity₂ include:

- 100% recyclable with active Reclamation Program that captures scrap from post-industrial (pre-consumer) and post-consumer sources
- Produced from 100% post-industrial (pre-consumer) recycled content
- Repeat recyclability for continued sustainability
- PVC-free
- Phthalate-free
- Lead-free
- Every component of this TPO compound is heat and chemically stable.
- Resistant to microbial and fungal growth
- Durable and washable

		SOLAR OPTICAL PROPERTIES				SHGC/G VALUE g-tot (glass & blind)	
Code	Color	TS	RS	AS	TV	SINGLE 1/4 CL	INSULATING 1 HA
INFINITY₂ - 1%							
PG1	Cotton	20	68	12	18	0.29	0.22
PG2	Almond	15	61	24	12	0.31	0.23
PG3	Wheat	12	54	34	10	0.35	0.25
PG4	Stone	13	55	32	11	0.35	0.24
QG1	Barley	18	52	30	15	0.37	0.26
VG1	Nickel	8	37	55	7	0.42	0.30
VG2	Midnight	1	63	93	2	0.59	0.37
VG3	Bark	3	7	90	5	0.58	0.37
VG4	Slate	2	9	89	4	0.57	0.36
INFINITY₂ - 3%							
PG1	Cotton	20	70	10	19	0.28	0.21
PG2	Almond	17	61	22	15	0.32	0.23
PG3	Wheat	12	52	36	9	0.37	0.25
PG4	Stone	12	52	36	11	0.37	0.25
QG1	Barley	16	53	31	14	0.37	0.25
VG1	Nickel	9	36	55	8	0.44	0.30
VG2	Midnight	3	6	91	5	0.59	0.37
VG3	Bark	3	7	90	4	0.58	0.37
VG4	Slate	3	10	87	5	0.57	0.36
INFINITY₂ - 5%							
PG1	Cotton	23	68	9	22	0.30	0.22
PG2	Almond	20	60	20	18	0.33	0.23
PG3	Wheat	14	51	35	12	0.37	0.26
PG4	Stone	15	52	33	14	0.37	0.25
QG1	Barley	19	51	30	17	0.38	0.26
VG1	Nickel	10	34	56	11	0.45	0.30
VG2	Midnight	5	6	89	8	0.60	0.37
VG3	Bark	4	7	89	6	0.59	0.37
VG4	Slate	5	9	86	7	0.58	0.36



The Next Generation of Sustainable Fabric



PRODUCT CERTIFIED FOR
LOW CHEMICAL EMISSIONS
UL.COM/GG
UL 2818



MIF Seal of Approval



TS = Solar Transmittance
RS = Solar Reflectance
AS = Solar Absorptance
TV = Visual Transmittance

SHGC = Solar Heat Gain Coefficient

1/4 CL = 1/4" Clear Glass
1 HA = 1" Heat Absorbing Glass

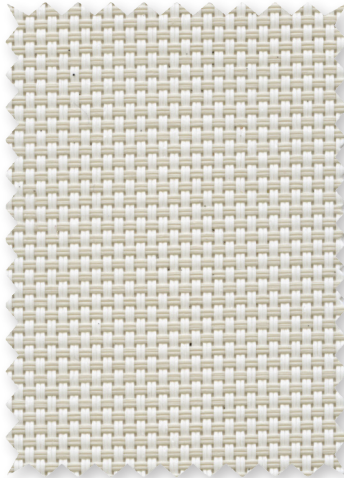
Fabrics Installed Internally
Zero-Degree Profile Angle

For additional performance values, test
references and technical definitions visit us at
www.phifer.com.

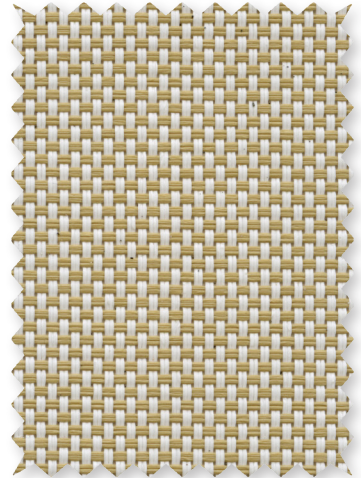
PG1 **Cotton**



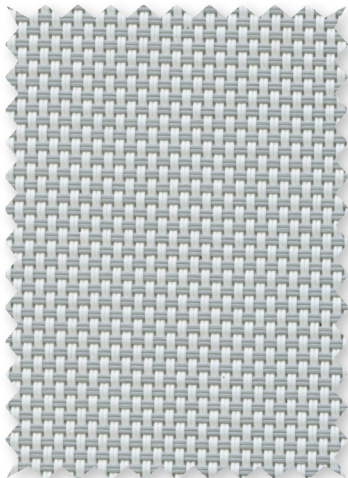
PG2 **Almond**



PG3 **Wheat**



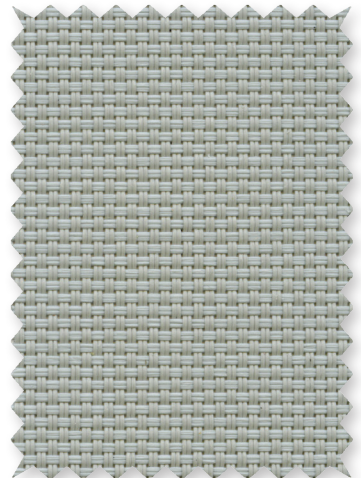
PG4 **Stone**



QG1 **Barley**



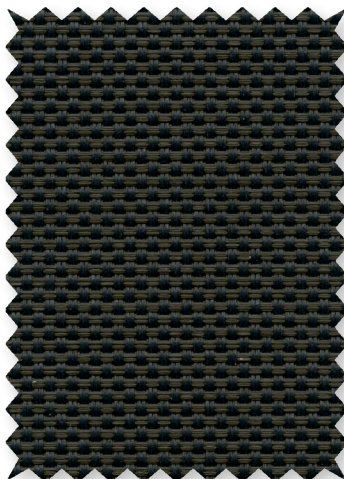
VG1 **Nickel**



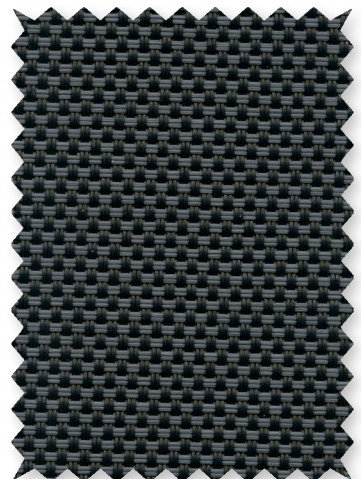
VG2 **Midnight**



VG3 **Bark**



VG4 **Slate**



*Colors may vary based on individual computer settings and should only be used for general reference.

INFINITY₂ SPECIFICATIONS

SheerWeave Infinity₂ sustainable sun control fabrics are eco-friendly full basketweaves designed to meet the most stringent environmental design standards. With 100% recycled content, 100% recyclable, and a PVC-free composition, Infinity₂ fabrics offer the same solar heat and glare control properties as traditional SheerWeave fabrics for conserving energy, harnessing natural light and maintaining interior comfort levels.

FIRE CLASSIFICATION

1%, 3%, 5%	NFPA 701 TM#1 (small scale) CAN/ULC-S 109 (large scale)	NFPA 101 (Class A Rating) IBC Section 803.1.1 (Class A Rating)
3%, 5% ONLY	BS 5867 Part 2 Type B Performance	
5% ONLY	CAN/CGSB2-4.162-M80	

Fire classifications are subject to change. Please go to phifer.com for the most current information.

BACTERIA AND FUNGAL RESISTANCE

ASTM E 2180 ASTM G21

ENVIRONMENTAL CERTIFICATION

GREENGUARD GREENGUARD Gold
Certified to these standards for low chemical emissions into indoor air during product usage

LEAD FREE

RoHS/Directive 2002/95/EC REACH (EC 1907/2006) compliant
ANSI/WCMA A 100.1-2007 for lead content
US Consumer Product Safety Commission Section 101

WARRANTY

5-year interior

ACOUSTICAL PERFORMANCE

NRC (Noise Reduction Coefficient) and SAA (Sound Absorption Average) tested in accordance with ASTM C423-09a

UV PROTECTION

Seal of Approval by the Melanoma International Foundation (MIF) for effectiveness in preventing sun damage to the skin or eyes

STYLE	1%	3%	5%
WIDTHS	63" and 98" 160 cm and 248.9 cm	63" and 98" 160 cm and 248.9 cm	63" and 98" 160 cm and 248.9 cm
ROLL LENGTH	30 Linear Yards 27.4 Linear Meters	30 Linear Yards 27.4 Linear Meters	30 Linear Yards 27.4 Linear Meters
COMPOSITION	100% TPO (Thermoplastic Olefin) 20% TPO fiber yarn 80% TPO coating on TPO yarn	100% TPO (Thermoplastic Olefin) 20% TPO fiber yarn 80% TPO coating on TPO yarn	100% TPO (Thermoplastic Olefin) 20% TPO fiber yarn 80% TPO coating on TPO yarn
MESH WEIGHT	14.63 oz/yd ² 496.03 g/m ²	13.69 oz/yd ² 464.17 g/m ²	12.82 oz/yd ² 434.67 g/m ²
FABRIC THICKNESS	0.032 in 0.813 mm	0.031 in 0.787 mm	0.030 in 0.762 mm
OPENNESS FACTOR	Approximately 1%	Approximately 3%	Approximately 5%
UV BLOCKAGE	Approximately 99%	Approximately 97%	Approximately 95%
ACOUSTICAL VALUE	NRC .20 / SAA .23	NRC .20 / SAA .19	NRC .10 / SAA .11

PHIFER
INCORPORATED

P. O. Box 1700 • Tuscaloosa, Alabama 35403 -1700 USA
Phone: 205.345.2120 • FAX: 205.391.0799
Toll Free USA/Canada: 1.800.221.5497
phifer.com • ISO Registered



© SheerWeave and SheerWeave Infinity are registered trademarks of PHIFER INCORPORATED.
™ UL, the UL logos and the UL mark are trademarks of UL LLC.
Cover photo courtesy of Rielamericano, Buenos Aires, Argentina.
© PHIFER INCORPORATED V18B 121818 3033845