

2019
 NOV/11th/2019 Veterans Day
 NOV/28th/2019 Thanks Giving
 NOV/29th/2019 Black Friday
 DEC/25th/2019 Christmas Day

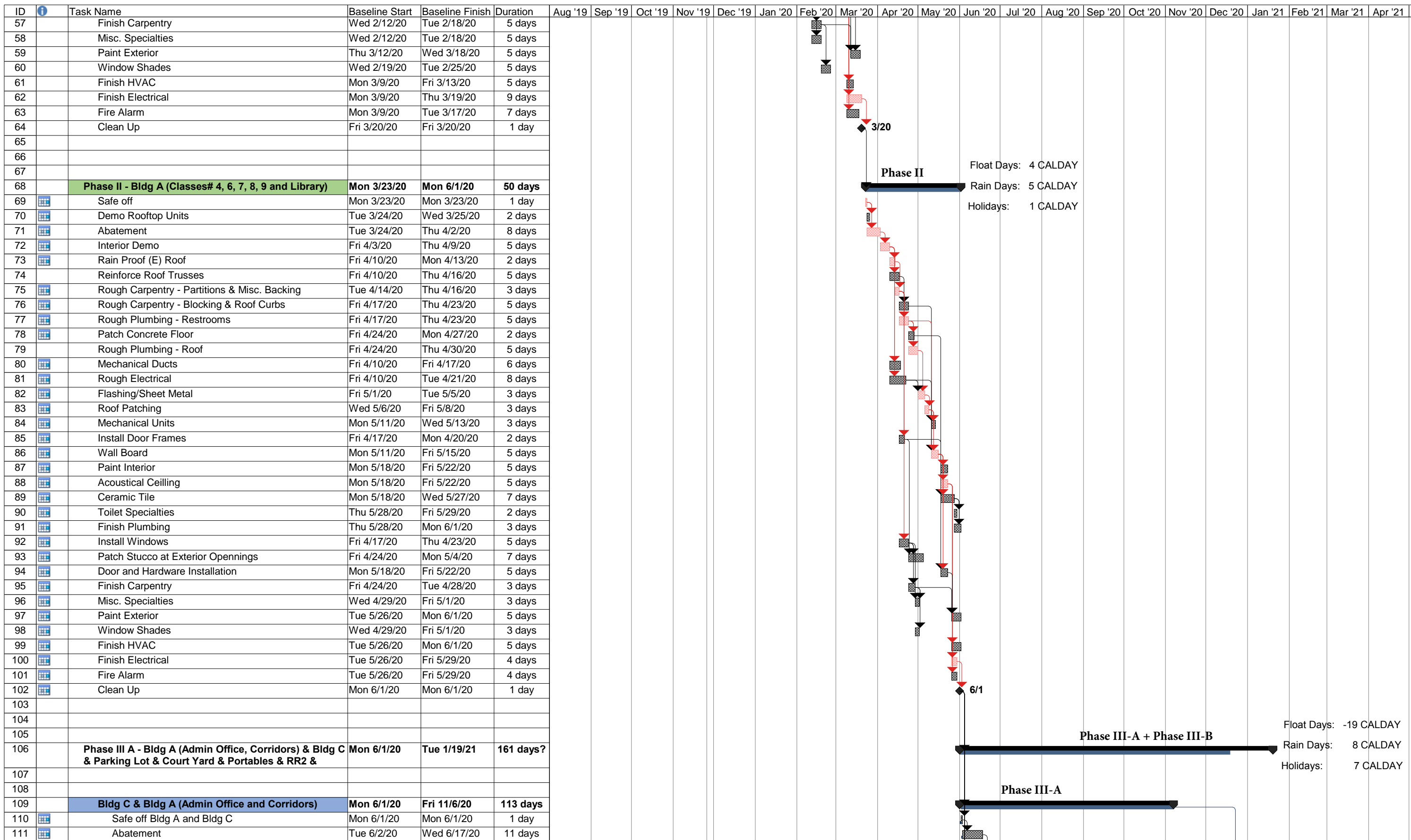
2020
 JAN/1st/2020 New Years Day
 MAY/25th/2020 Memorial Day
 JUL/4th/2020 Independence Day
 SEP/7th/2020 Labor Day
 NOV/11th/2019 Veterans Day
 NOV/26th/2020 Thanks Giving
 NOV/27th/2020 Black Friday
 DEC/25th/2020 Christmas Day

2021
 JAN/1st/2021 New Years Day

Phase I

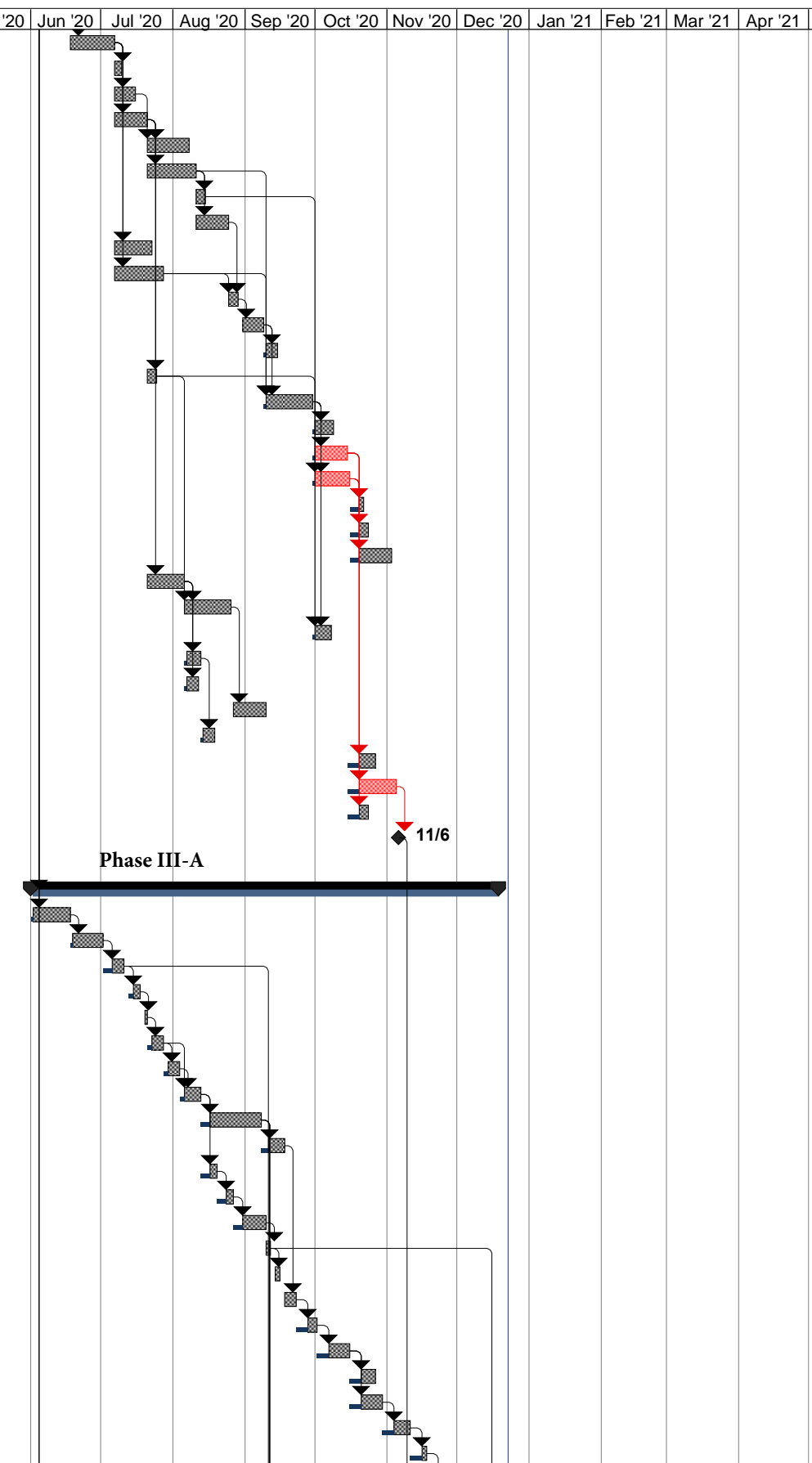
Float Days: 10 CALDAY
 Rain Days: 10 CALDAY
 Holidays: 5 CALDAY

Project: OES - Baseline Schedule Date: Tue 11/26/19	Holiday	[Yellow bar]	Project Summary	[Grey bar]	Inactive Milestone	[White bar]	Manual Summary	[Red diamond]	Critical	[Red bar]
	Task	[Grey bar]	Rain Day	[Green bar]	Inactive Summary	[Dotted line]	Start-only	[Red bar]	Critical Split	[Dotted line]
	Split	[Dotted line]	Float Day	[Orange bar]	Manual Task	[White diamond]	Finish-only	[Black bar]	Progress	[Black bar]
	Milestone	[Black diamond]	Inactive Task	[Red bar]	Duration-only	[Dotted line]	External Tasks	[Blue diamond]	Deadline	[Green arrow]
	Summary	[Black bar]	Inactive Milestone	[Yellow arrow]	Manual Summary Rollup	[Blue diamond]	External Milestone	[Blue bar]	Slippage	[Blue bar]



Project: OES - Baseline Schedule Date: Tue 11/26/19	Holiday		Project Summary		Inactive Milestone		Manual Summary		Critical	
	Task		Rain Day		Inactive Summary		Start-only		Critical Split	
	Split		Float Day		Manual Task		Finish-only		Progress	
	Milestone		Inactive Task		Duration-only		External Tasks		Deadline	
	Summary		Inactive Milestone		Manual Summary Rollup		External Milestone		Slippage	

ID	Task Name	Baseline Start	Baseline Finish	Duration	Aug '19	Sep '19	Oct '19	Nov '19	Dec '19	Jan '20	Feb '20	Mar '20	Apr '20	May '20	Jun '20	Jul '20	Aug '20	Sep '20	Oct '20	Nov '20	Dec '20	Jan '21	Feb '21	Mar '21	Apr '21
112	Interior Demo	Thu 6/18/20	Mon 7/6/20	12 days																					
113	Rain Proof (E) Roof	Tue 7/7/20	Thu 7/9/20	3 days																					
114	Reinforce Roof Trusses - Bldg A	Tue 7/7/20	Wed 7/15/20	7 days																					
115	Rough Carpentry - Partitions & Misc. Backing	Tue 7/7/20	Mon 7/20/20	10 days																					
116	Rough Carpentry - Blocking & Roof Curbs	Tue 7/21/20	Fri 8/7/20	14 days																					
117	Rough Plumbing - Restrooms	Tue 7/21/20	Mon 8/10/20	15 days																					
118	Patch Concrete Floor	Tue 8/11/20	Fri 8/14/20	4 days																					
119	Rough Plumbing - Roof	Tue 8/11/20	Mon 8/24/20	10 days																					
120	Mechanical Ducts	Tue 7/7/20	Wed 7/22/20	12 days																					
121	Rough Electrical	Tue 7/7/20	Mon 7/27/20	15 days																					
122	Flashing/Sheet Metal	Tue 8/25/20	Fri 8/28/20	4 days																					
123	Roof Patching	Mon 8/31/20	Tue 9/8/20	6 days																					
124	Mechanical Units	Wed 9/9/20	Mon 9/14/20	3 days																					
125	Install Door Frames	Tue 7/21/20	Fri 7/24/20	4 days																					
126	Wall Board	Wed 9/9/20	Tue 9/29/20	14 days																					
127	Paint Interior	Wed 9/30/20	Thu 10/8/20	6 days																					
128	Acoustical Ceiling	Wed 9/30/20	Wed 10/14/20	10 days																					
129	Ceramic Tile	Wed 9/30/20	Thu 10/15/20	11 days																					
130	Toilet Specialties	Fri 10/16/20	Wed 10/21/20	2 days																					
131	Flooring	Fri 10/16/20	Fri 10/23/20	4 days																					
132	Finish Plumbing	Fri 10/16/20	Mon 11/2/20	10 days																					
133	Install Windows	Tue 7/21/20	Wed 8/5/20	12 days																					
134	Patch Stucco at Exterior Openings	Thu 8/6/20	Wed 8/26/20	14 days																					
135	Door and Hardware Installation	Wed 9/30/20	Wed 10/7/20	5 days																					
136	Finish Carpentry	Thu 8/6/20	Wed 8/12/20	4 days																					
137	Misc. Specialties	Thu 8/6/20	Tue 8/11/20	3 days																					
138	Paint Exterior	Thu 8/27/20	Wed 9/9/20	9 days																					
139	Window Shades	Thu 8/13/20	Tue 8/18/20	3 days																					
140	Finish HVAC	Thu 10/15/20	Mon 10/26/20	5 days																					
141	Finish Electrical	Thu 10/15/20	Wed 11/4/20	12 days																					
142	Fire Alarm	Thu 10/15/20	Fri 10/23/20	4 days																					
143	Clean Up	Thu 11/5/20	Fri 11/6/20	1 day																					
144																									
145	Court Yard & Parking Lot & Site Work	Mon 6/1/20	Fri 12/18/20	141 days?																					
146	Demo Hardscape & Ramps	Mon 6/1/20	Wed 6/17/20	12 days																					
147	Rough Grading	Thu 6/18/20	Wed 7/1/20	9 days																					
148	U/G Trenching for Utilites and Electrical	Thu 7/2/20	Fri 7/10/20	5 days																					
149	Piping	Mon 7/13/20	Fri 7/17/20	3 days																					
150	Catch Basins	Mon 7/20/20	Mon 7/20/20	1 day?																					
151	Backfill & Compact	Tue 7/21/20	Mon 7/27/20	3 days																					
152	Irrigation Pipig	Tue 7/28/20	Mon 8/3/20	3 days																					
153	Fnish Grading	Tue 8/4/20	Wed 8/12/20	5 days																					
154	Concrete Footings - Ramps, Pilasters & Lights	Thu 8/13/20	Mon 9/7/20	15 days																					
155	Concrete Stem Walls	Tue 9/8/20	Thu 9/17/20	5 days																					
156	Concrete Gutter	Thu 8/13/20	Wed 8/19/20	3 days																					
157	A.C. Pave at Portables area	Thu 8/20/20	Wed 8/26/20	3 days																					
158	A.C. Pave at Parking Lot	Thu 8/27/20	Wed 9/9/20	7 days																					
159	A.C. Seal Coat	Thu 9/10/20	Fri 9/11/20	2 days																					
160	Srtiping & Signs	Mon 9/14/20	Tue 9/15/20	2 days																					
161	Waterproofing	Fri 9/18/20	Tue 9/22/20	3 days																					
162	Backfilling	Wed 9/23/20	Thu 10/1/20	4 days																					
163	Ramp Slabs	Fri 10/2/20	Thu 10/15/20	7 days																					
164	Ramp Ralings	Fri 10/16/20	Mon 10/26/20	4 days																					
165	Concrete Stairs	Fri 10/16/20	Thu 10/29/20	7 days																					
166	Concrete Benches	Fri 10/30/20	Tue 11/10/20	5 days																					
167	Concrete Curbs & Mow Strips	Wed 11/11/20	Tue 11/17/20	2 days																					



Project: OES - Baseline Schedule Date: Tue 11/26/19	Holiday		Project Summary		Inactive Milestone		Manual Summary		Critical	
	Task		Rain Day		Inactive Summary		Start-only		Critical Split	
	Split		Float Day		Manual Task		Finish-only		Progress	
	Milestone		Inactive Task		Duration-only		External Tasks		Deadline	
	Summary		Inactive Milestone		Manual Summary Rollup		External Milestone		Slippage	

ID	Task Name	Baseline Start	Baseline Finish	Duration	Aug '19	Sep '19	Oct '19	Nov '19	Dec '19	Jan '20	Feb '20	Mar '20	Apr '20	May '20	Jun '20	Jul '20	Aug '20	Sep '20	Oct '20	Nov '20	Dec '20	Jan '21	Feb '21	Mar '21	Apr '21
168	Concrete Paving & Finishing	Wed 11/18/20	Tue 12/8/20	10 days																					
169	CMU Pilasters	Tue 9/8/20	Mon 9/14/20	2 days																					
170	Stucco for Pilasters	Tue 9/15/20	Wed 9/23/20	4 days																					
171	Ext. Light Fixtures at Parking Lot	Tue 9/8/20	Tue 9/15/20	3 days																					
172	Flag Pole & Bike Rack Installation	Tue 9/8/20	Thu 9/10/20	3 days																					
173	W.I. Fence and Gate - on Site	Wed 12/9/20	Thu 12/17/20	2 days																					
174	Landscaping	Wed 12/9/20	Tue 12/15/20	5 days																					
175	Clean Up	Wed 12/16/20	Fri 12/18/20	3 days																					
176																									
177	Street Work	Tue 6/2/20	Tue 7/14/20	30 days																					
178	Encroach Permit	Tue 6/2/20	Wed 6/3/20	2 days																					
179	Trenching	Thu 6/4/20	Wed 6/17/20	10 days																					
180	Piping	Thu 6/18/20	Wed 6/24/20	5 days																					
181	Backfill & Compact	Thu 6/25/20	Wed 7/1/20	5 days																					
182	Patch Sidewalks	Thu 7/2/20	Thu 7/9/20	5 days																					
183	Clean Up	Fri 7/10/20	Tue 7/14/20	3 days																					
184																									
185																									
186	Phase III B - Bldg A (Classes# 1, 2, 3, 5, and Perimeter Fence)	Mon 11/9/20	Fri 1/22/21	51 days																					
187	CLF Perimeter Fence	Mon 11/9/20	Thu 12/10/20	22 days																					
188	Safe off	Mon 11/9/20	Mon 11/9/20	1 day																					
189	Demo Rooftop Units	Wed 11/11/20	Wed 11/11/20	1 day																					
190	Abatement	Wed 11/11/20	Wed 11/18/20	6 days																					
191	Interior Demo	Fri 11/20/20	Tue 12/1/20	6 days																					
192	Rain Proof (E) Roof	Thu 12/3/20	Fri 12/4/20	2 days																					
193	Reinforce Trusses	Thu 12/3/20	Wed 12/9/20	5 days																					
194	Rough Carpentry - Partitions & Misc. Backing	Fri 12/11/20	Wed 12/16/20	4 days																					
195	Rough Carpentry - Blocking & Roof Curbs	Fri 12/18/20	Tue 12/29/20	7 days																					
196	Rough Plumbing - Roof	Tue 12/8/20	Tue 12/15/20	6 days																					
197	Mechanical Ducts	Thu 12/3/20	Thu 12/17/20	11 days																					
198	Rough Electrical	Thu 12/3/20	Tue 12/15/20	9 days																					
199	Flashing/Sheet Metal	Thu 12/17/20	Tue 12/22/20	4 days																					
200	Roof Patching	Thu 12/24/20	Wed 12/30/20	4 days																					
201	Mechanical Units	Mon 1/4/21	Tue 1/5/21	2 days																					
202	Install Door Frames	Fri 12/18/20	Fri 12/18/20	1 day																					
203	Wall Board	Mon 1/4/21	Thu 1/7/21	4 days																					
204	Paint Interior	Fri 1/8/21	Mon 1/18/21	7 days																					
205	Acoustical Ceiling	Mon 1/11/21	Fri 1/15/21	5 days																					
206	Install Windows	Fri 12/18/20	Tue 12/29/20	7 days																					
207	Patch Stucco at Exterior Opennings	Thu 12/31/20	Fri 1/8/21	6 days																					
208	Door and Hardware Installation	Tue 1/12/21	Mon 1/18/21	5 days																					
209	Finish Carpentry	Wed 12/30/20	Thu 1/7/21	6 days																					
210	Misc. Specialties	Wed 12/30/20	Fri 1/8/21	7 days																					
211	Paint Exterior	Mon 1/11/21	Thu 1/21/21	10 days																					
212	Window Shades	Fri 1/8/21	Wed 1/13/21	8 days																					
213	Finish HVAC	Mon 1/18/21	Fri 1/22/21	5 days																					
214	Finish Electrical	Mon 1/18/21	Thu 1/21/21	4 days																					
215	Fire Alarm	Tue 1/19/21	Fri 1/22/21	4 days																					
216	Clean Up	Fri 1/22/21	Fri 1/22/21	1 day																					
217																									
218																									
219																									
220	Substantial Completion	Mon 1/25/21	Mon 1/25/21	1 day																					
221	Closeouts and Punch List	Thu 1/28/21	Fri 3/12/21	32 days																					

Phase III-A

Phase III-B

7/10

12/16

1/22

1/28

Project: OES - Baseline Schedule
Date: Tue 11/26/19

Holiday		Project Summary		Inactive Milestone		Manual Summary		Critical	
Task		Rain Day		Inactive Summary		Start-only		Critical Split	
Split		Float Day		Manual Task		Finish-only		Progress	
Milestone		Inactive Task		Duration-only		External Tasks		Deadline	
Summary		Inactive Milestone		Manual Summary Rollup		External Milestone		Slippage	