

TENSIONING SOLUTIONS Inc.

"Your simple and low-cost banner Stretching System"

Newsletter - January 13, 2015

IN THIS ISSUE:

▶ [A Few Examples of Notable 2014 Realizations](#)

▶ [TS28 Extrusion](#)

100s of Applications...



Realized With A Handful of Extrusions...!



KEEPING IN TOUCH...

Phone: (800) 436-8242

[Pinterest](#) [Gallery](#)

Welcome To Our 2015 Newsletter 2014 Realizations Retrospective...

A Few Examples of Notable 2014 Realizations...

We cannot show you all the interesting and notable projects realized by our clients in 2014 with our products, but here are a few of them that got our attention.

TS22 Extrusion



Our tension frame was chosen for this advertising box truck for the following reasons: 1) Impeccably stretched vinyl banners and 2) Its cost-effectiveness.

Web: www.tensols.com



[Send us an Email](#)

[Subscribe To Our Newsletter](#)



All our aluminum and PVC extrusions are 100% recyclable.



Our entire aluminum and PVC extrusion product line is designed and manufactured in the USA.

How does it work?

Have a look to our video...



[Ask For A Free Quote](#)



This billboard was realized using our low-cost TS22 extrusion. The frame dimensions are 17'H x 40'W. This was the first project realized by our client. Yes it is that simple...



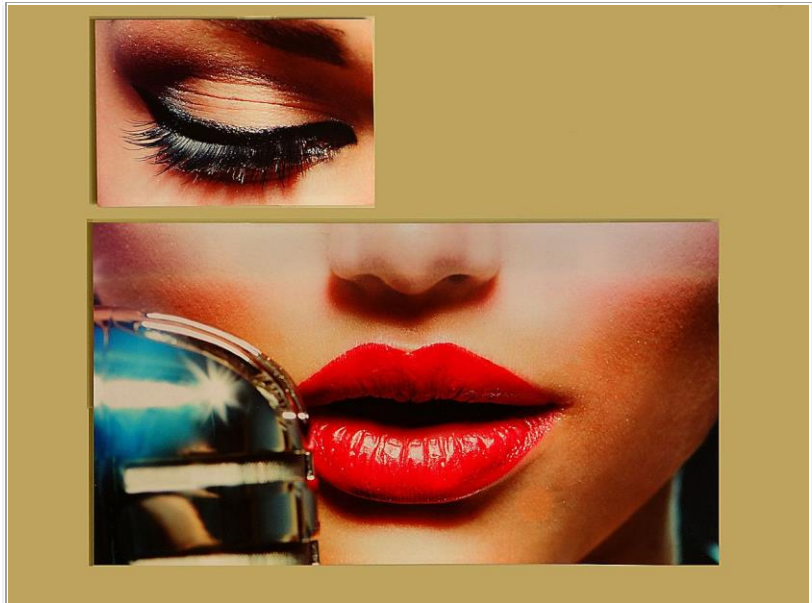
16' by 60' TS22 Banner Stretching Frame. This wall graphic was realized for a Petroleum company in Houston, TX.
(Material cost cost \$490)

[Top of Page](#)

TS28 Extrusion for Fabricating ART Frames

The TS28 aluminum extrusion is designed to fabricate ART Frames. The graphic is fixed and stretched on the rear of the frame and is wrapped

around it, totally hiding the extrusion.



The smallest TS28 ART Frame is 24" by 36" and the large one is 45" by 81"

TS32 Extrusion



This interesting project was about fabricating two arched frames to be installed on a wall with arches for a University. The top TS32 extrusions were bent in a metal shop and welded. Note the well stretched printed vinyl on this non-rectangular frame.

TS44 Extrusion

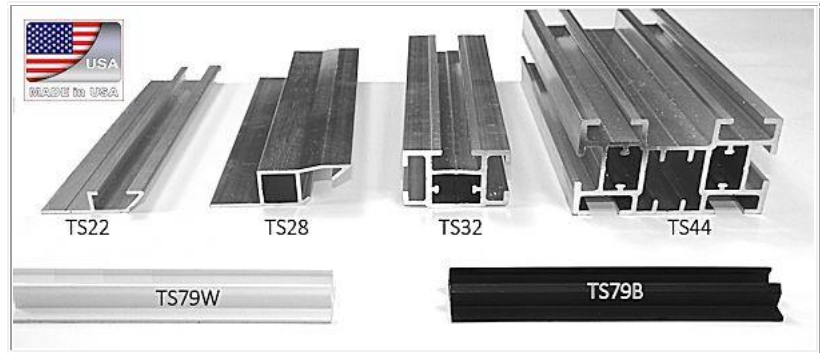


These two TS44 frames installed on a rough wall was superbly handled and will facilitate the graphic changes. (See details hereunder)



In the corners a piece of TS44 was inserted to both fix the frame on this rough wall and reinforce the corner rigidity.

Extrusions Product Line



Ask For A Free Quote

Top of Page



**TENSIONING
SOLUTIONS**

Tensioning Solutions Inc.

EASY TO INSTALL FOR ANY FRAME SHAPES AND SIZES,