

ECHO

FEB. 3, 2017

Alamo Rec-Veh Park • 1320 W. Frontage Rd. • Alamo, TX 78516 • webpage: alamorecvehpark.com Vol. 2, Issue 14
General Manager (956) 787-8221 or (956) 703-8025 or (956) 602-9056 • Activity Office (956) 783-5440 / (956)-475-5018
Editors: Barb Zanetti (Taetsch) (586) 438-5115 and Colleen Benoit (262) 914-7100 • Email: echo1320@att.net
(Please place upcoming announcements in the Main Office "ECHO" Box by TUESDAY at 5 p.m. OR use the Echo email.)

DEFIBRILLATORS: The defibrillators are currently located in the East Laundry Room, north section of the Main Hall, and in the Laundry next to the Pool Hall.

FROM THE MAIN OFFICE

Dear Alamo Rec-Veh Residents,

We hope that all of our residents are having a good winter.

We'd like to thank everyone who helped make our Open House a great success! Thanks to all of you, several visitors are impressed with our park and have made reservations.

For the next couple of weeks, our special activities should interest park residents: On Saturday, many of us will enjoy the Radio Show Dinner Theater with its Big Band Dance to follow. The next day, we'll munch on snacks at the Super Bowl Party. Then, we'll nibble on pizza before Tuesday's Free Dance to Cindy Renee. This is followed by Wednesday's Bike Olympics and a Pie a la Mode and Root Beer Float sale. On Saturday, Feb. 11, we'll find ourselves at a Modified Box Social with a Cowboy Poet entertainer. All of this is in addition to all of our weekly activities. Don't forget RC Small-Cars on Monday, Copters on Tuesday morning, Fun Shoot on Thursday, RC Oval Track on Friday, RC Off-Road Track on Saturday, and RC Sailing on Sunday, plus more. So much for us to enjoy!

Let us know if we can be of help to any of you.

Sincerely, Barb Hamel, General Manager

NOTE: If you haven't made reservations for next year, please stop by to do so.

Don't Miss ...

Gordy & Aggie's BBQ RIB DINNER

FRI., FEB. 17 at 5 p.m. \$8.50

Menu: BBQ Ribs, Baked Potato, Salad, Dessert, Coffee or Iced Tea.

CUT-OFF DATE for Tickets: WED., FEB. 15 at NOON

TUES., FEB. 7 DANCE is FREE for park residents wearing nametags. (Compliments of Elmer Bruns' Aluminum Can Collection \$\$.)

CINDY RENEE

PEPPERONI PIZZA -- \$1.50 PER SLICE

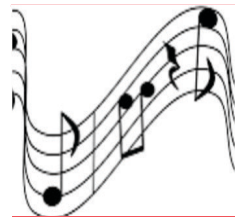
DRINKS available for purchase.

Pizza served from 6:45-7:15 p.m. Dance to follow.

PIZZA SIGN-UP SHEET NEAR KITCHEN

The Range is now OPEN! Electricity is on.

RESIDENTS: Please be careful. Keep your doors locked. Be assured that we have surveillance in the park. If you hear strange noises, including knocks on your doors, don't hesitate to call 911.



AY & TAMMY host JAM & DANCE

This week's theme: BIG BAND

**MON., FEB. 6. (Lunch at 11 a.m. \$5,
followed by Jam at 12:30 a.m.)**

MENU: Chicken Noodle or Chicken Vegetable Soup,
Grilled Cheese Sandwich, Dessert, Coffee or Iced Tea.

WEDNESDAY MEETING CHANGE

9 a.m. FREE DONUTS & COFFEE

9:15 a.m. MEETING including Speakers

Everyone is encouraged to come. Police will be at this meeting to answer your questions. We hope to have our Alamo Mayor at this meeting, too.

Upcoming Events

SAT., FEB. 4 – BLOOD DRIVE (8-11 a.m.) Please make appointments in Activity Office.

SUN., FEB. 5 – SUPER BOWL PARTY IS ON! (5 p.m.) in Rec Hall. Bring snacks (finger food) and your own beverage. Debbie and Leonard Fulk are hostess and host. NO CAKE & ICE CREAM due to party.

TUES., FEB. 7 – PIZZA PARTY & DANCE WITH CINDY RENEE. Cost for Dance is FREE because Elmer Bruns paid for it with Aluminum Can money. Residents MUST wear their park nametags to get in FREE. Out-of-park attendees will pay \$5. Pizza sign-up sheet on hall near kitchen. (\$1.50 per slice and you will be able to purchase a drink.) Pepperoni pizza will be served from 6:45 to 7:15 p.m.

WED., FEB. 8 – BIKE OLYMPICS. Anyone who signed up for Bike Olympics should meet at the East Gate at 7:45 a.m. to load bikes. Leave park at 8 a.m.

WED., FEB. 8 – PIE A LA MODE & ROOT BEER FLOATS. (1 p.m.) in Rec Hall.

THURS., FEB. 9 – WISCONSIN BREAKFAST. Come to meet fellow Wisconsinites. (9 a.m.) Los Cabos Restaurant (Dutch Treat), 923 S. Alamo Rd., Alamo. (Next to Unique Hair Designs.) Please RSVP before Feb. 7. Dean and Karen Starks, Lot 197, (920) 210-4709.

THURS., FEB. 9 – MR. GATTI'S PIZZA. Sign-up sheet on bulletin board. See Activity Office for time and more information.

SAT., FEB. 11 – MODIFIED BOX SOCIAL with COWBOY POET (5 p.m.) in Rec Hall. Cost: \$2.50. One person decorates a box containing

Upcoming Events . . . *Continued*

a cold lunch worth \$10 or more. The other person brings \$\$ to bid at least \$10 on the lunch. You don't need to sit with the person who decorated and filled the box. Friends and neighbors may sit together and share the lunches they've purchased. *(All proceeds will stay in park to purchase special items, such as the two benches in front of the Main Office.) See Activity Office for tickets or get them at Wednesday's Activity Meeting.*

SUN., FEB. 12 -- CANADIAN LUNCHEON (New time: 1 p.m.). Meet at El Dorado Restaurant, 755 Main St., Alamo. Contact Denise Gareau, Lot 98 or call (956) 223-4469 to confirm attendance. *(Please wear something red if you can.)*

SUN., FEB. 12 -- 50th WEDDING ANNIVERSARY CELEBRATION See Activity Director.

WED., FEB. 15 -- RED HAT SALAD LUNCHEON & STYLE SHOW (11:30 a.m.).

Cost: \$2. Salad Luncheon is open to all park residents including men. Style Show follows luncheon. Door prizes. Please bring a salad with serving spoon. Table service will be furnished. Tickets in Activity Office. Open to

ALL park residents.

FRI., FEB. 17 -- GORDY & AGGIE'S BBQ RIB DINNER (5 p.m.) in Rec Hall. Cost: \$8.50. Menu: BBQ Ribs, Baked Potato, Salad, Dessert, Coffee or Iced Tea. **Cut-off date for tickets: Wed., Feb. 15 at noon.**

SAT., FEB. 18 -- 9th ANNUAL CONFERENCE GOD'S WORTHY WOMEN (9 a.m.-3 p.m.) Center Church, 4801 N. Cage Blvd., Pharr. Tickets: \$30. (Info & Registration: Leila Preuss 479-957-6683).

WED., FEB. 22 -- AARP DRIVING CLASS (12:30-4:30 p.m.) Sign-up on bulletin board as you come into Rec Hall. *(See Activity Office for more info.)*

WEDNESDAY MORNING 9 A.M. ACTIVITY MEETINGS

Get the latest updates on activities in the park and visit with friends and neighbors. Everyone is WELCOME! Please join us!

CAKE & ICE CREAM ...

Please bring your own bowl or bowls for cake and ice cream. If you forget, please only ask for one bowl.

ELMER BRUNS



A BIG THANK YOU to Elmer Bruns for his hard work with the Aluminum Can Fund. After a couple of years collecting and recycling, he has given back to Alamo Rec-Veh Park in a BIG way!

He saved \$740 and chose to give back with the following donations:

1. Three round tables for the Annex card and joker players.
2. One big round table for the Rec Hall.
- 3 Two new 100-cup coffee pots.
4. Pizza Party Dance *(He paid for dance.)*

Currently, he has \$11 in the Aluminum Can Fund. Please continue to donate cans to this fund. Proceeds always help out the park.

Sue Bentz



VALENTINE PARTY

COWBOY POET ENTERTAINMENT

WITH

MODIFIED BOX SOCIAL

SAT., FEB. 11, 2017 from 5-9 P.M.

How it works:

1. **LADY** (or Partner 1) brings **BOXED MEAL** (Cold -- not hot -- food) **FOR TWO** (MINIMUM VALUE \$10)
2. **MAN** (or Partner 2) brings **Mega Cash** (at least \$10) **To Bid on a Box** (to share with Partner 1)
3. **BOXES** to arrive by **4:30 p.m.** (Boxes should be concealed in cloth or garbage bag.)
4. **EVERYONE** is **WELCOME** (Couples & singles)
Coffee, Iced Tea and Water will be provided or BYOB.

Please write ticket number on your box inside your bag.

TICKETS: \$2.50 per person

GET YOUR TICKETS EARLY at the Activity Office. (ONLY 150 AVAILABLE!)



RESIDENT INFO FORMS DUE

Please turn these forms in **AS SOON AS POSSIBLE**. This important information helps us to update our office records. *If you've already completed them, thank you!*

MAIL FORWARDING LABELS

Please check with the office to see if you have correct mail forwarding labels. These labels will help us forward your mail back home when it's time for you to leave Alamo Rec-Veh Park.

PACKAGE DELIVERY INFO

When ordering anything to be delivered to your lot here, be sure to use the correct lot number. If you're on the blacktop use an A before your lot number. Use an F for F section, and B for B section.

REMEMBER: Speed limit in the park is 10 mph. Keep our residents safe!

COMBINATION ON FLEA MARKET GATE HAS BEEN CHANGED.

Please stop at office to get new code.

ALAMO REC-VEH PARK CALENDAR

\$5 Donation

*featuring even more
coupons than last year!*

AVAILABLE IN MAIN OFFICE

ALAMO REC-VEH PARK SPECIAL EVENTS listed in this calendar. Check out fun photos of your friends and neighbors. *Plus, so many money-saving coupons!*

GROUP NEWS

CREATIVE EXPRESSIONS

2/6/17 -- 2ND CLUE FOR "MYSTERY QUILT" – We will be working on the quilt for this session.

2/13/17 PILLOWCASE – Bring 9" x width of fabric (at least 42" wide) for cuff, 27" x width of fabric (at least 42") non-directional fabric for the pillow, 3" of contrast fabric for trim, if desired.

2/20/17 EARRINGS – **Gelene Logsdon** – Make these cute button earrings. Bring two earring hooks, 26 jump rings, 10- 2 hole or 4 hole buttons (these buttons can be a little larger than the four-hole small buttons) and 10 - 4 hole small buttons. Hobby Lobby carries a nice selection of everything needed for this project.

2/27/17 – FINAL CLUE FOR THE "MYSTERY QUILT" and revealing! Finish the quilt top or work on any other unfinished project.

BUSY BEE QUILTERS

Busy Bee Quilters meet on Friday at 1 p.m. in Annex.

BIKE RIDING GROUP

Contact Gary at (515) 370-4289 for more information. All bikers who signed up for the Senior Olympics, please meet at the East Gate at 7:45 a.m. for check-in and bike loading. Leave park at 8 a.m.

LIBRARY NEWS

Please do not push the books back on the shelves. For all people who love to quilt and sew, we have a nice collection of non-fiction books on quilting and sewing. They are located on the bottom shelves of the small bookcase by the door. Just a reminder to place incoming books into baskets and we will shelve them. Donated books must be in good condition and puzzles complete. Thank you for your cooperation.
Dean and Karen Starks

HELPING HANDS

From 8-11:30 a.m. on Tuesdays in Annex, Helping Hands invites everyone to make quilts for needy here in the Valley. You don't have to sew. Lots of quilts need tying, etc. *Guys & gals needed!*

The Church Corner



Pastor Cathy Graham

*Salt and Light Community
of Alamo Rec-Veh Park*

Tele: (956) 524-4913

Email: 2dlbug@msn.com

"You are the salt of the earth ...
You are the light of the world, a city
that is set on a hill cannot be hidden ...
Let your light so shine before man, that
they may see your good works and glorify
your Father in heaven."

Mark 5: 13-15

- Church services on Sundays at 9 a.m.
- **CHOIR PRACTICE:** Fridays at 9 a.m.
- **BIBLE STUDIES** on Wednesdays at 10 a.m. (after Park Meeting) for men and women; Fridays at 1 p.m. for women
- MINDFUL COLORING follows Wednesday Bible Studies.
- Please check Church Bulletin Board for info about future events.
- Special services will be held on Ash Wednesday, Good Friday and Easter Sunday.
- Go to Schwans-Cares.com & enter #30812 to order food online. Proceeds will be donated to charity.

POOL NEWS

Wed. Pool Fun Nite: Open to all... Guys and Gals. Thanks to the super group of 34 that made last Wednesday fun and for all the treats. Please sign up for the Owner's Tournament on Feb. 15 at 6:30 p.m. Sharp. Final sign-up is Feb. 8. Chart is in pool hall. See you on Wednesday Fun Nite at 6:30 p.m. Everyone is invited.

RECYCLING

All proceeds from aluminum can recycling will be used for park activities. Orange-covered collection containers are located in NE corner near kitchen in Rec Hall, in the Annex by water fountain, and on north side of all laundry rooms. Cans may be deposited on north side of *The Range* in Can Shack (through direct access door).

Thank You!

We would like to thank Helping Hands for the lovely quilts we received after our accidents. We really appreciate your kindness. We also would like to thank the many inquiries, thoughts and prayers we received. We are surely blessed with all the friends in this park. Thank you.
Robert and Darleen Klassen

Thanks to everyone who helped with the park's Aluminum Can Recycling Project. Be sure to deposit your cans in one of the fluorescent orange-topped collection containers in the Main Hall by the kitchen, in the North Hall by the Library, on the north side of the East Laundromat, by the Pool Hall, and by the new Wood Shop (old West Laundromat). You can also put them directly into the Can Shed, located on the north side of *The Range*. Thank you again.
Elmer Bruns

LOOKING FOR ANY COUPLE CELEBRATING 50th WEDDING ANNIVERSARY. WE WOULD LIKE TO CELEBRATE WITH THEM. CONTACT ACTIVITY OFFICE.

The following groups NEED participants, players, spectators, etc. Go to a meeting, game, or activity just to see if it's a good fit for you. **GROUP LEADERS:** You will need to submit info for this column by Tuesday at 5 p.m. every week. Please be brief. Copy will be edited.

RC Racing & Range

- Fri., Feb. 3 -- HORSESHOE OVAL TRACK (PRACTICE 11 A.M.; LUNCH – NOON; RACING 1 P.M.)* Race or come down to watch. *Weather permitting.
- Sat., Feb. 4 -- OFF-ROAD TRACK – (RACING 1 P.M.)* *Weather permitting.
- Sun., Feb. 5 -- SAILBOAT RACING AT DOCK (LUNCH 12 NOON; RACING 1 P.M.)* (Menu: Hot dogs, chips, brownies, soda/pop/water) *Weather permitting (Remember, too much wind is not good for sailboats or power boats. If the canopy goes up near the dock, racing and lunch are on.)
- Mon., Feb. 6 -- INDOOR SMALL-SCALE CAR RACING in Annex (9 A.M.-NOON).
- Tues., Feb. 7 -- QUADCOPTER RACING in Rec Hall. (9-11 A.M.) Bring your 'copters and drones. Bakery fare and coffee on sale.
- Thurs., Feb. 9 -- FUN SHOOT (1 P.M.) at The Range. **ELECTRICITY IS REPAIRED!**

2016-17 REMOTE CONTROL RACING AND RIFLE RANGE DONATIONS:

(The following donations give you access to ALL RC and Gun Range competitions and activities for the 2016-17 season. There's NO separation for individual activities.) Please get your donations in soon. Donations help to fund RC, Gun Range and Fishing events.

Annual Couple: \$50 donation; Monthly Couple: \$20 donation
Annual Single: \$35 donation; Monthly Single: \$15 donation

– RC&R REGISTRATION PROCEDURE –

Registration for all RC and Pellet Gun activities are handled by Main Office. After the office staff receives your fees, they'll have your RC&R badges printed and returned to your mailbox.

RC&R MEMBERS: Please stop by all RC&R activities. There will be someone there to help you learn how to operate vehicles at all events. If you don't try it, you'll miss out on FUN!

NOTE:

IT IS A VIOLATION TO TAMPER WITH METER BOARDS (ELECTRICITY) BY MIXING UP NUMBERS.

HELP WANTED

MAINTENANCE VOLUNTEERS for race tracks, quadcopters and indoor small-car tracks, as well as "The Range." Contact: Colleen Benoit at (262) 914-7100.

UPCOMING TOURS

Sign-up for all tours in Tour Office or in Main Hall on Bulletin Board so you don't miss out on opportunities. (Once a tour is filled, you LOSE your chance to go.) Meet in Rec Hall before the tour unless otherwise indicated. Watch for new tours (posted) because last-minute opportunities often open for park residents. For info, call Tour Directors Marian Peterson at (651) 307-3104 or JoAnn Langseth at (612) 719-0350.

- MON., FEB. 6 – ANDERSON BOOT FACTORY. Leave park at 8:30 a.m.
- TUES., FEB. 7 – RIO GRANDE CITY TOUR. (Cost: \$11) Sign up and pay in Tour Office in order for us to reserve your space. Leave park at 8:30 a.m.
- THURS., FEB. 9 – JERSEY BOYS. For those who paid, please stop by and pick up your tickets for the show.
- SAT., FEB. 11 – HISTORY TOUR of Sabal Palms Sanctuary and Historic Rabb River Plantation Home in Brownsville. (Cost: \$9 includes a bag lunch) Leave park at 9 a.m.
- MON., FEB. 13 – KING RANCH HISTORICAL TOUR Leave park at 7:30 a.m.

POP TABS • CAMPBELL SOUP LABELS EDUCATION COUPONS EYEGLASSES & FRAMES

We're saving POP TABS for Ronald McDonald House. In addition, we're saving Campbell Soup labels, along with Education coupons from Campbell products. Collection containers for both items are in Card Room. We're also saving eyeglasses and frames for the Lion's Club. Box is on kitchen window shelf by water fountain.

OPEN HOUSE PRIZEWINNERS

Dean Herrick, Lot 329; Simon Tetreault; Rich Gish, Lot 63; Gilbert Shymanski, Lot 34; Ginny Eichler; Paul Sunderland; and Gloria Simpson, Lot 227.

PARKING

Please don't park cars and trucks in spots designated for Golf Carts. There is a limited amount of golf cart parking.

**POOL CLOSED
FOR CLEANING 7-8 a.m.**