



# THE CT REGIONAL SCHOLASTIC ART AWARDS – 2020 ACCEPTED WORK GUIDELINES

*Notification of Awards will take place on Tuesday, January 1/8/19  
results posted at [www.ctartawards.net](http://www.ctartawards.net)*

## **Drop-Off accepted work ONLY**

**on Wednesday, January 8 & Thursday, January 9, 2020 from 3:15 - 7:45 p.m.**

**Important:** *Your artwork MUST be available for exhibition if you submit to the Awards. Please do not sell, give, or send your artwork to anyone else if you are submitting to the Scholastic Art Awards. Any work deemed too different from the image adjudicated will not be exhibited and any awards will be forfeited.*

*Refusing to provide award-winning work for exhibition and/or to agree to all corresponding rights releases may result in the revocation of any award given*

**Size Requirements** — *Over-sized or over-weight artwork which is larger than 48 inches in any dimension or has two dimensions that add up to more than 82 inches and/or over 40lbs. may not be displayed due to space limitations and/or special shipping conditions.*

## **FOR ACCEPTED WORKS:**

- **SIGNED SUBMISSION FORM MUST BE ATTACHED SECURELY TO EACH ENTRY.** You can print these forms after your student's work has been fully registered. *The student, teacher, and parent or guardian must sign all submission forms.*
- **FOR ALL CATEGORIES:** If your submission incorporates images **not created** by the student, for example images/material from the internet/computer be sure to **attach an actual copy** of any and all such images with your submission forms to the back of the piece.
- Label the back or bottom of a 3D work with the student's name, school, city, state and title of work.
- Mat or mount **ALL** works on paper or flimsy material on rigid board.
- **ANY WORK THAT SMUDGES INCLUDING ALL CHARCOAL, PASTEL, OILPASTEL AND GRAPHITE MUST HAVE AN ACETATE COVER OR BE HEAVILY SPRAYED.** (*see 2D directions*)
- **NO FRAMES AND GLASS.**
- **Work on Canvas or Board must be wired for hanging.** (*Matted artwork does not need to be wired.*)
- **FILM & ANIMATION and VIDEO GAME DESIGN:** TO HAVE YOUR FILM/ANIMATION or VIDEO GAME INCLUDED IN THE CONNECTICUT EXHIBIT: IF YOU WIN AN AWARD YOU WILL NEED TO DELIVER A PROPERLY LABELED USB FLASH DRIVE TO THE HARTFORD ART SCHOOL IN A FORMAT THAT CAN BE PLAYED.

## **ART PORTFOLIOS:**

- **CHOOSE 1 ARTWORK FROM YOUR PORTFOLIO TO REPRESENT THE PORTFOLIO IN THE EXHIBIT. ONLY 1 PIECE WILL BE HUNG.** *Judges may make a suggestion of which work to hang.*
- PORTFOLIO ARTWORK **MUST HAVE 1 COPY OF THE SIGNED PORTFOLIO SUBMISSION FORM WITH THE TITLE OF THE CORRESPONDING WORK HIGHLIGHTED ATTACHED TO THE PIECE.**
- Follow the Accepted 2D or 3D Artwork Guide to prepare your winning portfolio piece for exhibition.

**WORK NOT DELIVERED DURING DESIGNATED TIME WILL  
NOT BE INCLUDED IN THE EXHIBIT.**

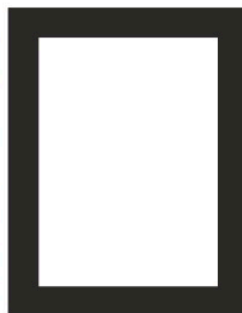
# ACCEPTED 2D ARTWORK GUIDELINESS - CT

## 2D EXHIBIT READY

- mat artwork - black or white mats only.
- signed submission form taped to mat back.
- written on bottom right of mat back:
  - student name
  - school name
  - teacher name
  - contact info



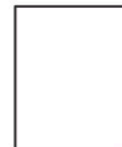
ARTWORK



MAT

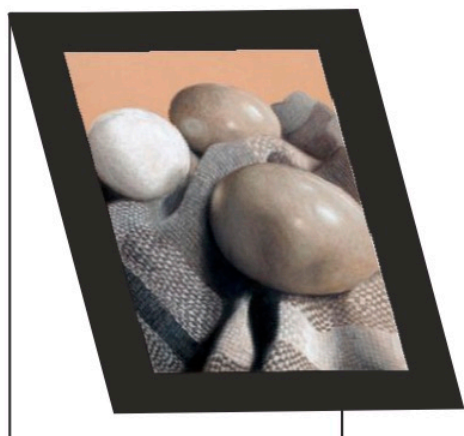


RIDGID BOARD

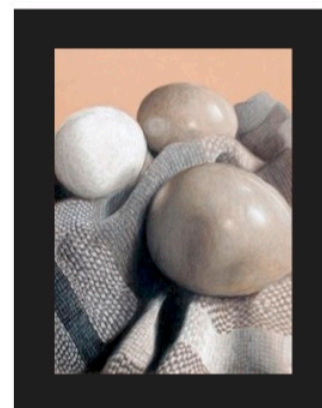
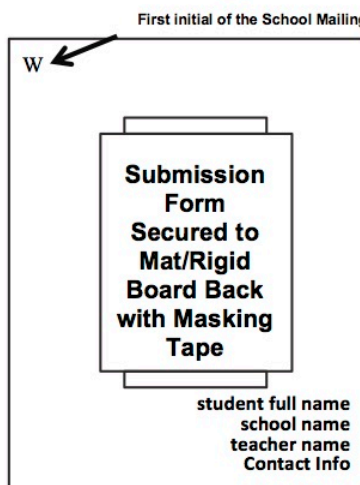


SUBMISSION FORM

**ALL 2-D SUBMISSIONS** attach 1 copy of the **signed** submission form to the back of the artwork with masking tape. Write the student's name, school name and school address on the back of the mat/mount in addition to attaching the submission form. *(This is to identify the artwork incase the submission becomes detached.)* **MUST BE MOUNTED or MATTED ON RIGID BOARD!** Piece must not bend when placed vertically against a wall.

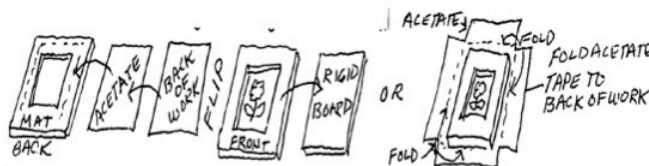


RIDGED BOARD SECURED TO BACK



MATTED or MOUNTED ARTWORK SECURE AND EXHIBIT READY

- **BLACK OR WHITE MATS ONLY. NO CREAM or COLORED MATS.** Mats are not required for submission, but piece **MUST** be mounted on RIGID BOARD. *No enhancements permitted.*
- **NO GLASS or FRAMES.**
- Works on Canvas, wood, canvass board, etc. **MUST** be wired for Hanging (**Heavy/complex hanging or wall installations MUST include Secure Hanger System and Instructions for display**)
- **ANY WORK THAT SMUDGES** INCLUDING ALL CHARCOAL, PASTEL, OILPASTEL AND GRAPHITE **MUST** HAVE AN ACETATE COVER OR BE HEAVILY SPRAYED. See diagram for using acetates with mats.
- **SIZE REQUIREMENTS** — **Over-sized or over-weight artwork which is larger that 48 inches in any dimension or has two dimensions that add up to more than 82 inches and/or over 40lbs. may not displayed due to space limitations and/or special shipping conditions.**
- **All Wires MUST be attached securely to the back of the art wok.** Do not tape hanging wire to the back of artwork.

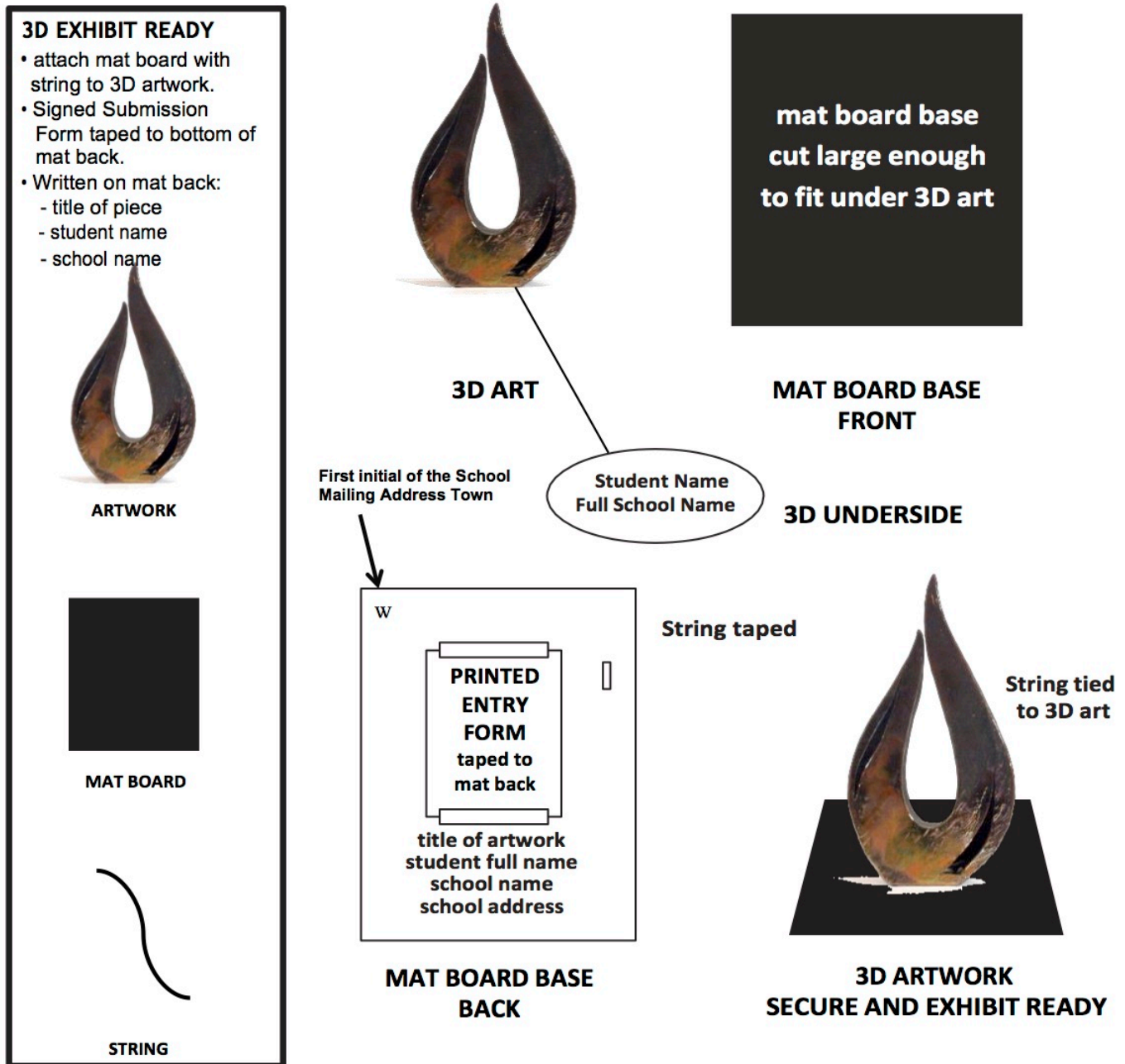


Matted works do not need to be wired.



# ACCEPTED 3D ARTWORK GUIDELINESS - CT

**ALL 3D SUBMISSIONS** attach 1 copy of the **signed** submission form securely to a cardboard with masking tape. Securely attach the cardboard backing to the 3D artwork with a **LONG PIECE OF STRONG THIN LINE**. Also, identify the work on its base or bottom using a fine Sharpie marker.



- Heavy/complex hanging or wall installations **MUST** include Secure Hanger System and Instructions for display.
- Assemblages **MUST** be delivered completely installed and attached.
- Fashion submissions **MUST** include display facilities.
- Hanging 3D work **MUST** have hanging systems/wire sturdy enough to support artwork.
- Display Instructions **MUST** be included with multiple piece submissions.
- **Size Requirements** — Over-sized or over-weight artwork which is larger than 48 inches in any dimension or has two dimensions that add up to more than 82 inches and/or over 40lbs. may not displayed due to space limitations and/or special shipping conditions.