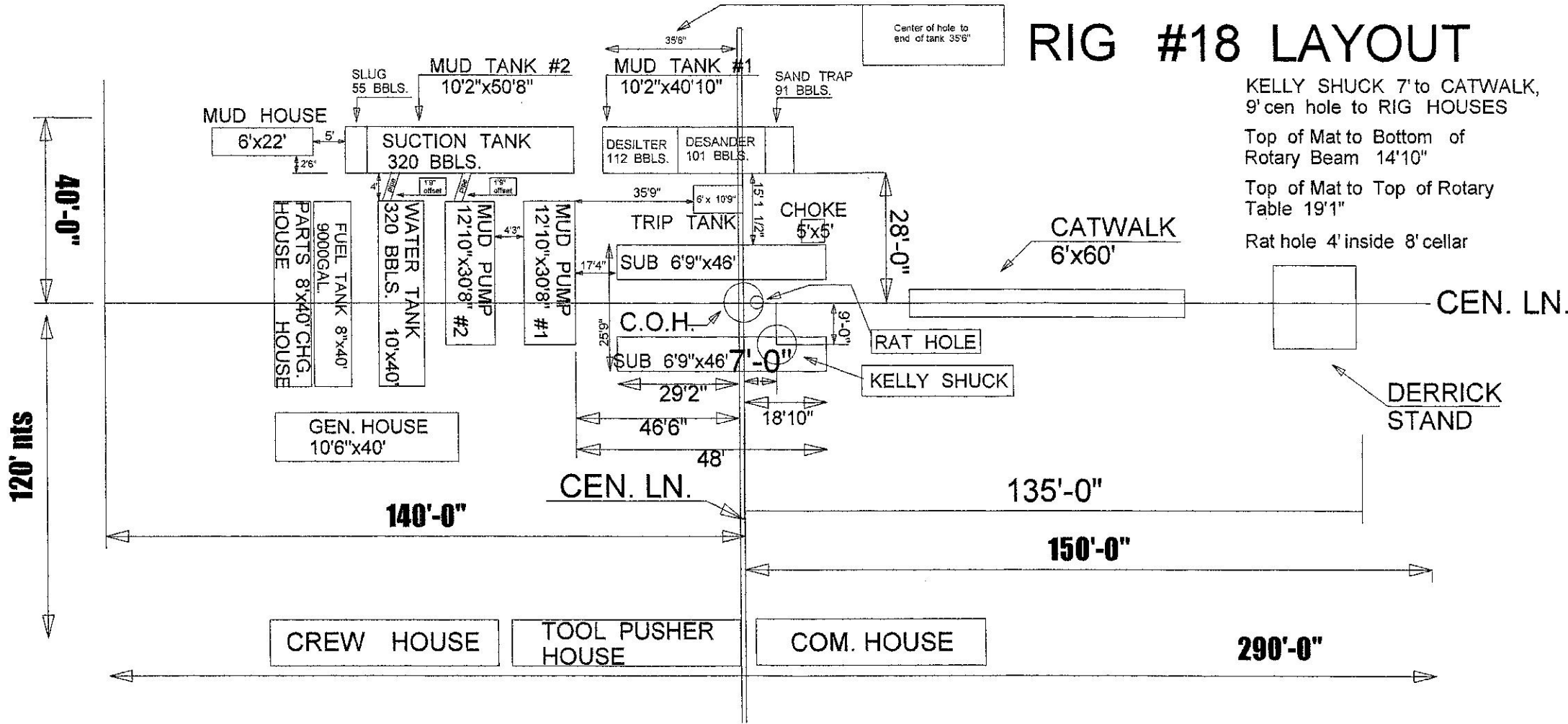


RIG #18 LAYOUT



KELLY SHUCK 7' to CATWALK,
 9' cen hole to RIG HOUSES
 Top of Mat to Bottom of
 Rotary Beam 14'10"
 Top of Mat to Top of Rotary
 Table 19'1"
 Rat hole 4' inside 8' cellar

CEN. LN.

DERRICK
 STAND

CEN. LN.

290'-0"

150'-0"

135'-0"

140'-0"

120' MS

40'-0"