

We make big business
seem easy



Subcontracts India

SUBCONTRACTS INDIA

FACILITATING SUBCONTRACTING BUSINESS IN INDIA

PRESENTS

SOLAR GREENHOUSE VILLAGE

GREEN HOUSE AGRICULTURE



“Solar Greenhouse Village”

Includes

40 Greenhouses

5MWh Solar Power Plant

Cold Warehouse

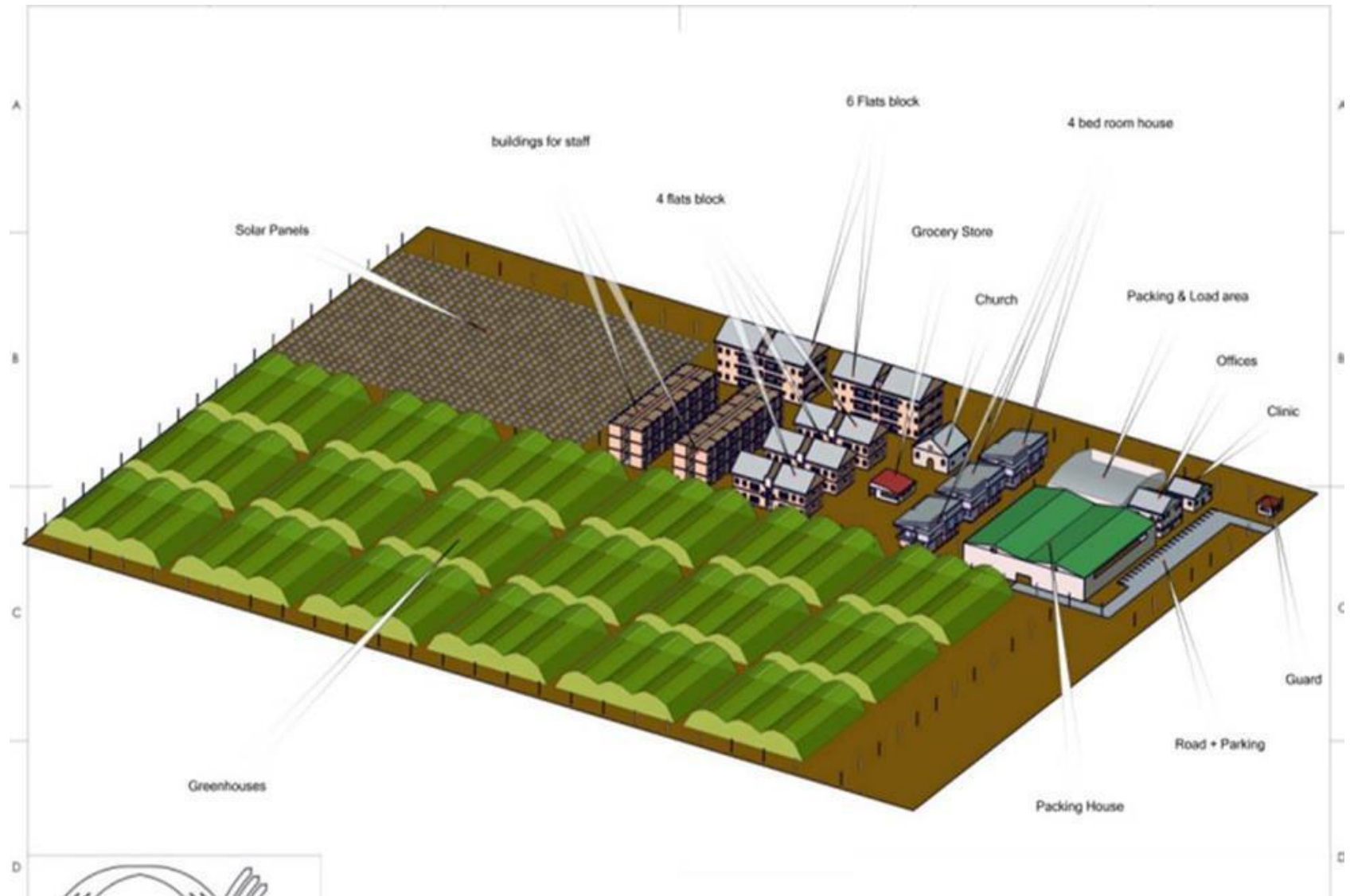
Experts For Training

Facilities, Clinic & School (optional)

Investment required INR 90- 120 Crores

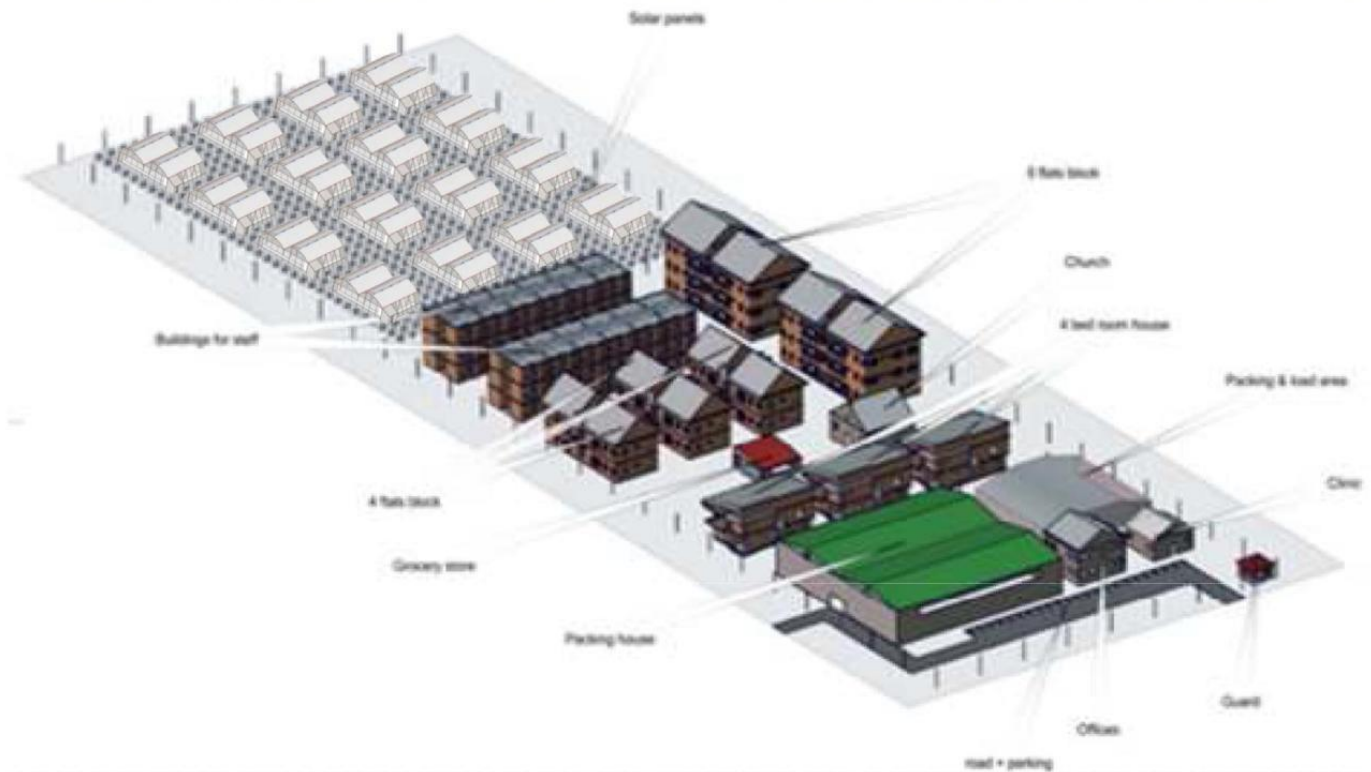
PROJECT FUND AVAILABLE

Greenhouses With Power Station



Greenhouses Without Power Station

Entrance village and service area

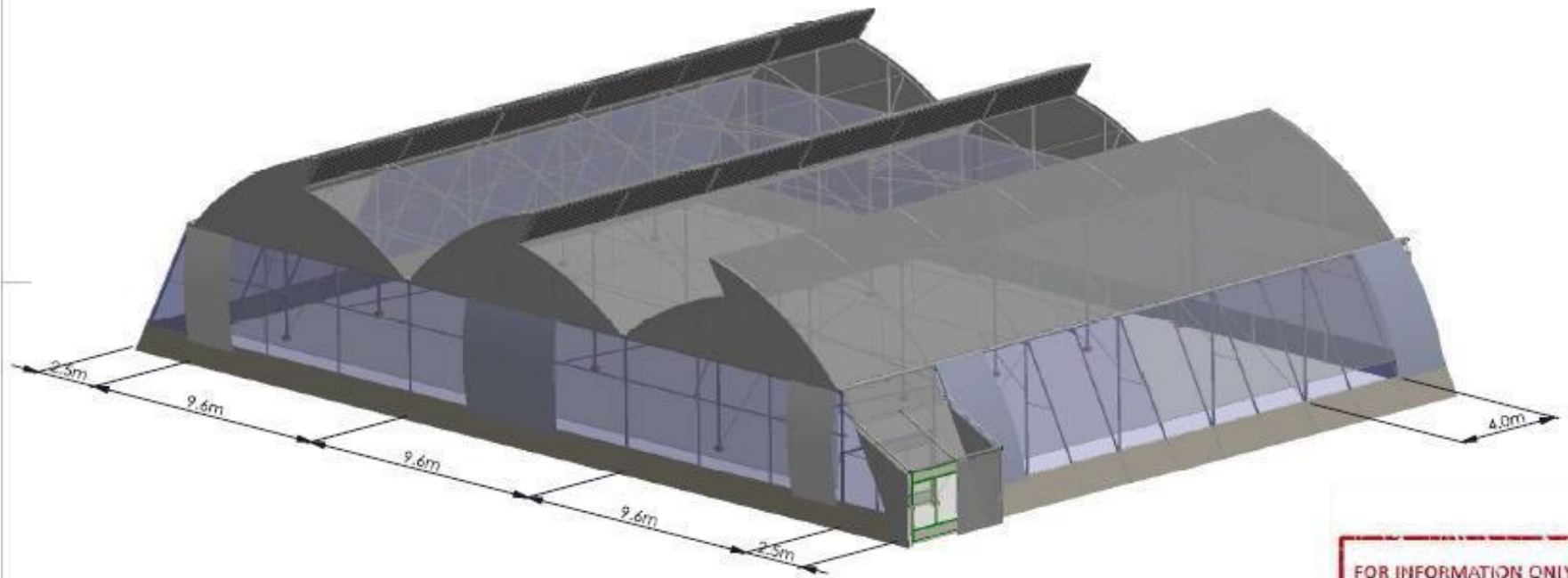


Rhino Greenhouse Technology

- The Rhino greenhouse is prefabricated and assembled on site
- Easy implementation by local manpower
- Full adaptation to all related sub systems used in modern greenhouse production.



TROPICAL UNIQUE DESIGN WITH FIXED ROOF VENT



FOR INFORMATION ONLY

40 Green Houses yield 4000 tons of
vegetables per year
Size of each Green house is 1.25 Acre

Total Land Required For Green Houses Is
Only 50 Acres

Village Generates Jobs For More Than 400 People Working In 40 Green Houses



Technology & Benefits

The greenhouse has 14 units of circulation fans

Benefits of air circulators

- For even distribution of air in the greenhouse.
- Homogenous temperature.
- Removal of humidity clouds, and leaf drying.
- For economical use of agrochemical.
- For heat reduction in open greenhouses.





Irrigation Control Room



Nursery Equipment & Automation



Irrigation Boom Technology Allows Comprehensive Control



Hydroponics Growing System



5 MW Solar Power Plant Off-Grid

Subcontracts India



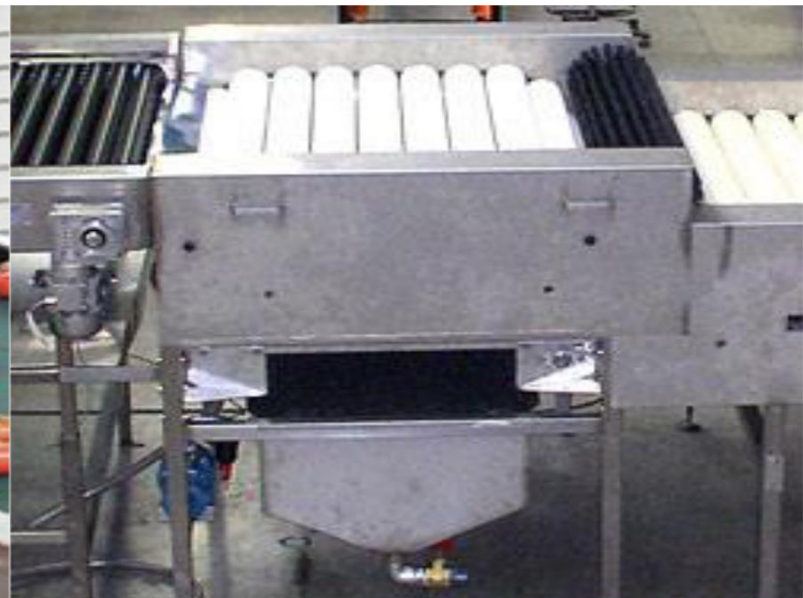
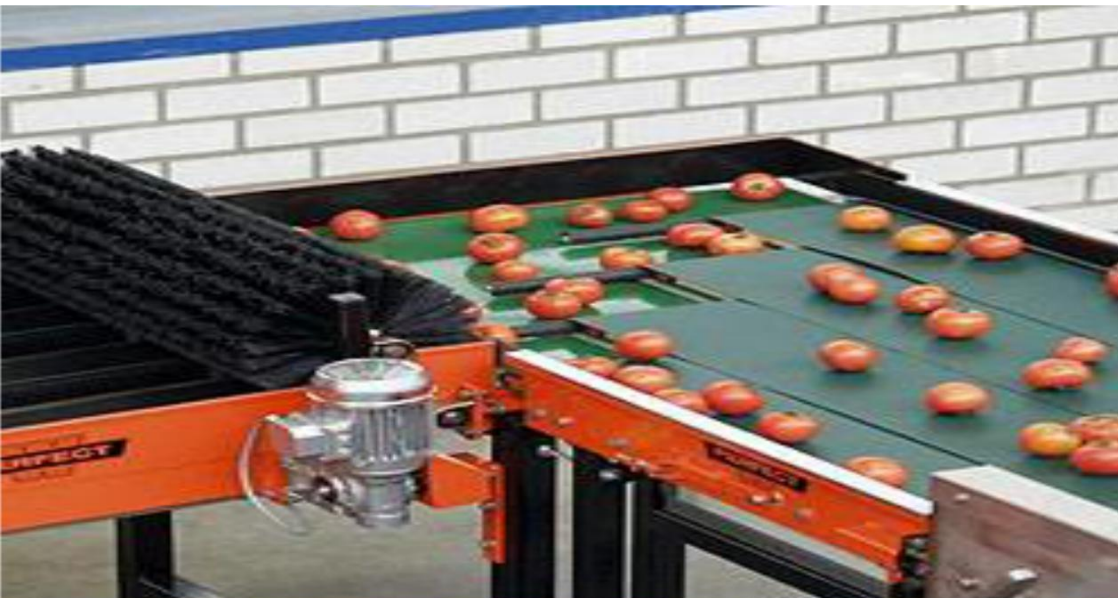
Packing House 17,216 Sq.ft + 6,456 Sq.ft storage house



Cold Room 3766 Sq.ft



Sorting and Packing Line



Advance Security System



Total Control Room



Food & Jobs & Health & Education

- Total land required: 100 Acres
- 40 green Houses requires 50 Acres
- Power plant 5MWh off grid 20 Acres
- Cold Warehousing: 2 Acres
- Staff Housing : 8 Acres
- Facilities, Training Centers: 5 Acres
- Clinic & Primary School: 5 Acres
- Project creates jobs for 400 people
- Experts provided for training the local staff

**PROJECT YIELD: 4000 TONS OF
VEGETABLES PER YEAR**

TOTAL PROJECT COST

- 40 Green Houses On 50 Acres
- Power Plant 5MWh Off-Grid
- Facilities, houses, and hostel(optional)
- Clinic (optional)
- INR 90- 120 Crores
- Technical support throughout project

Additional 3-5 yrs. agricultural support