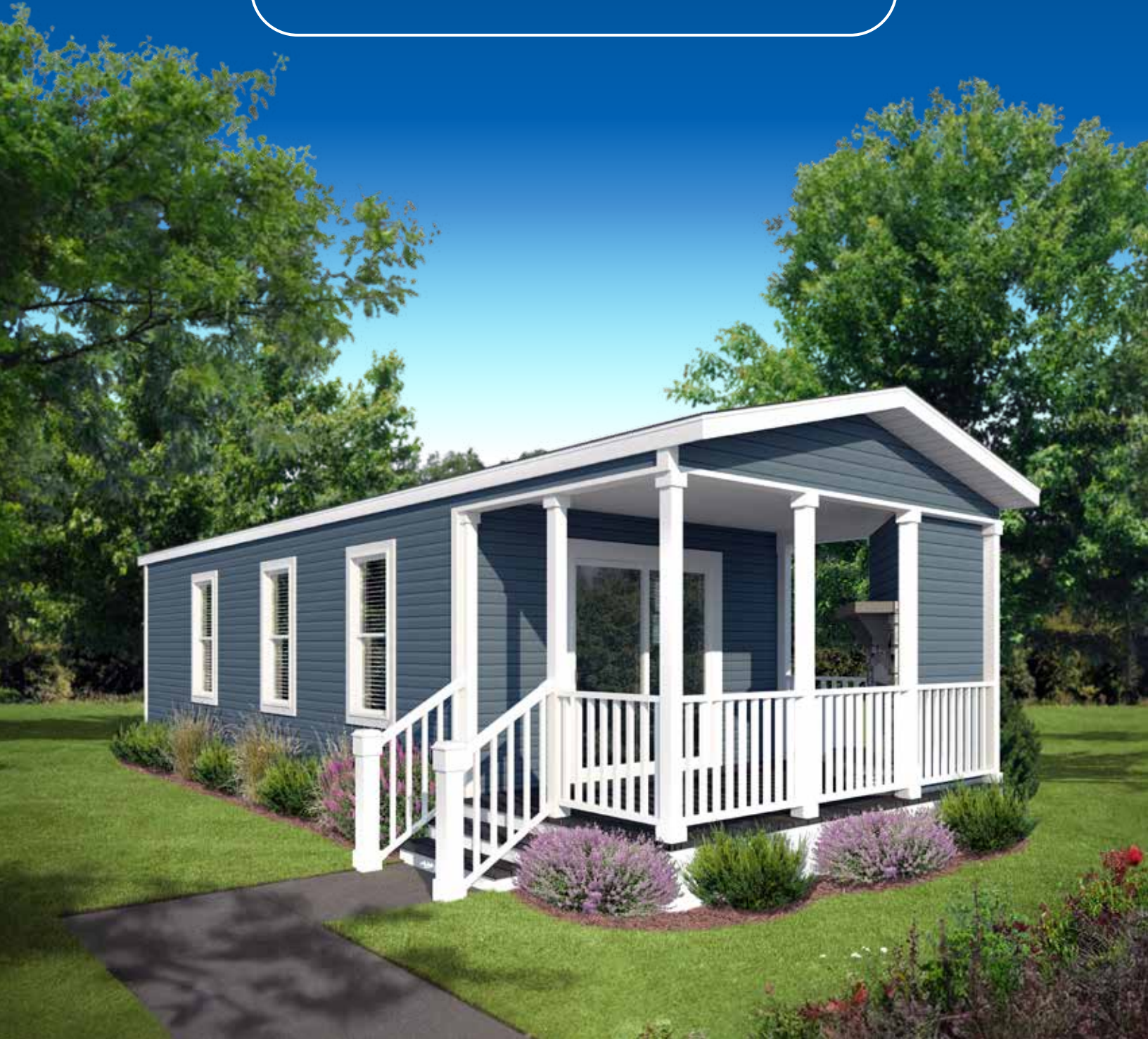


# SHORE PARK

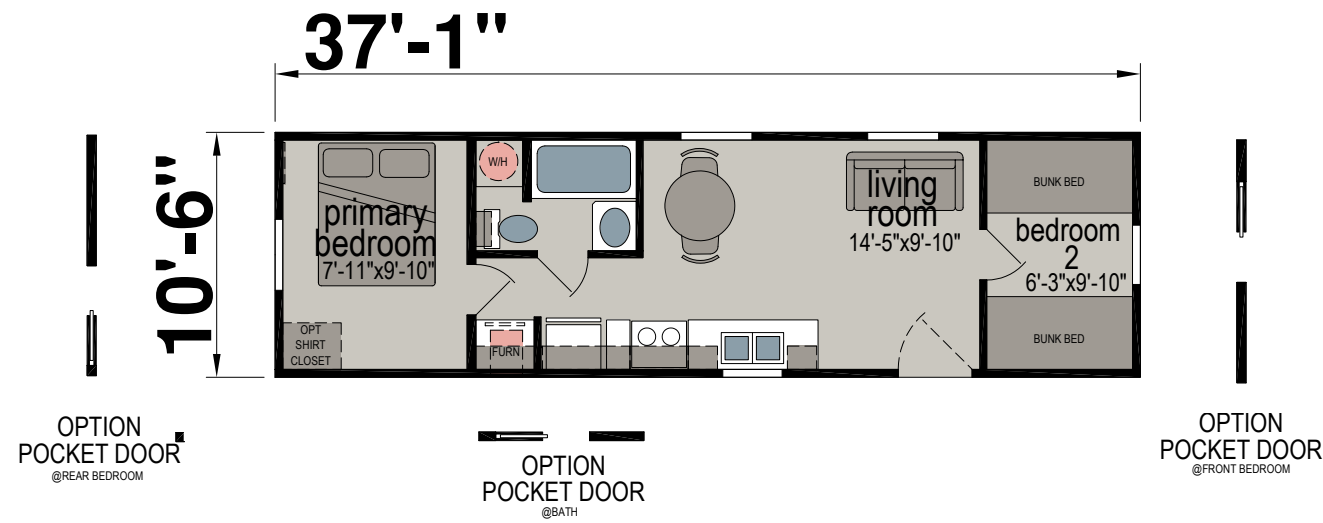
CABINS



**CHAMPION**<sup>®</sup>  
PARK MODELS & CABINS

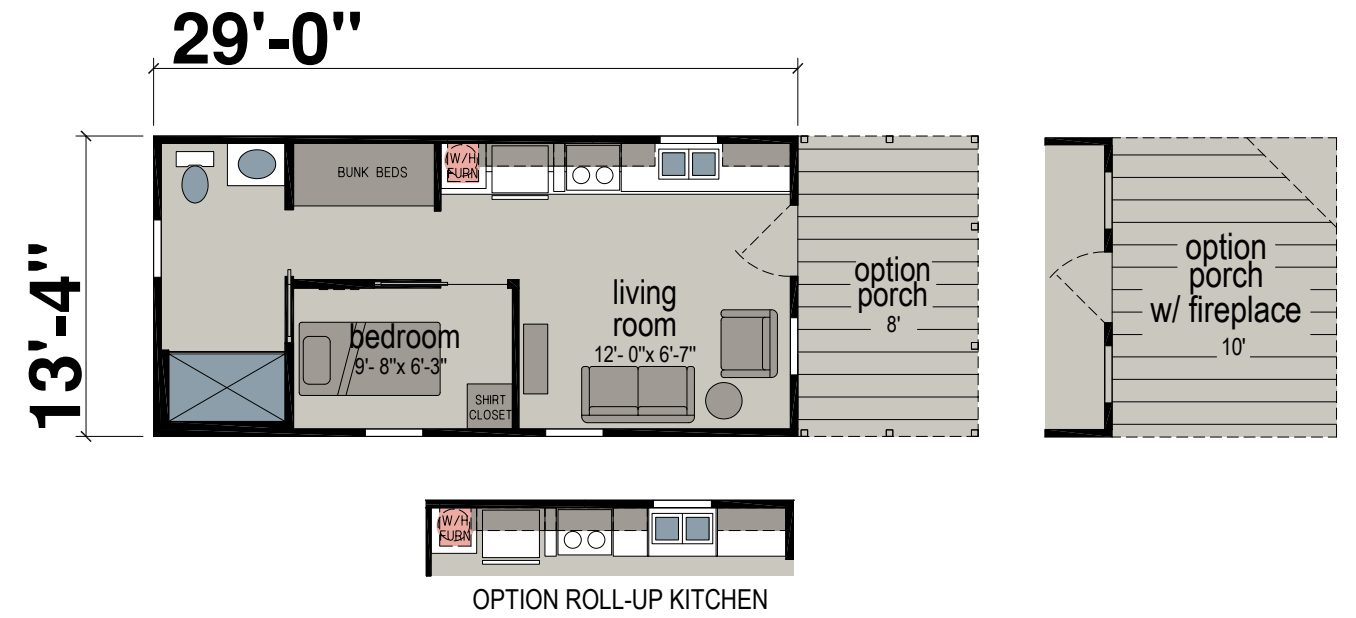
1604

Two Bed | One Bath | 399 sq. ft.



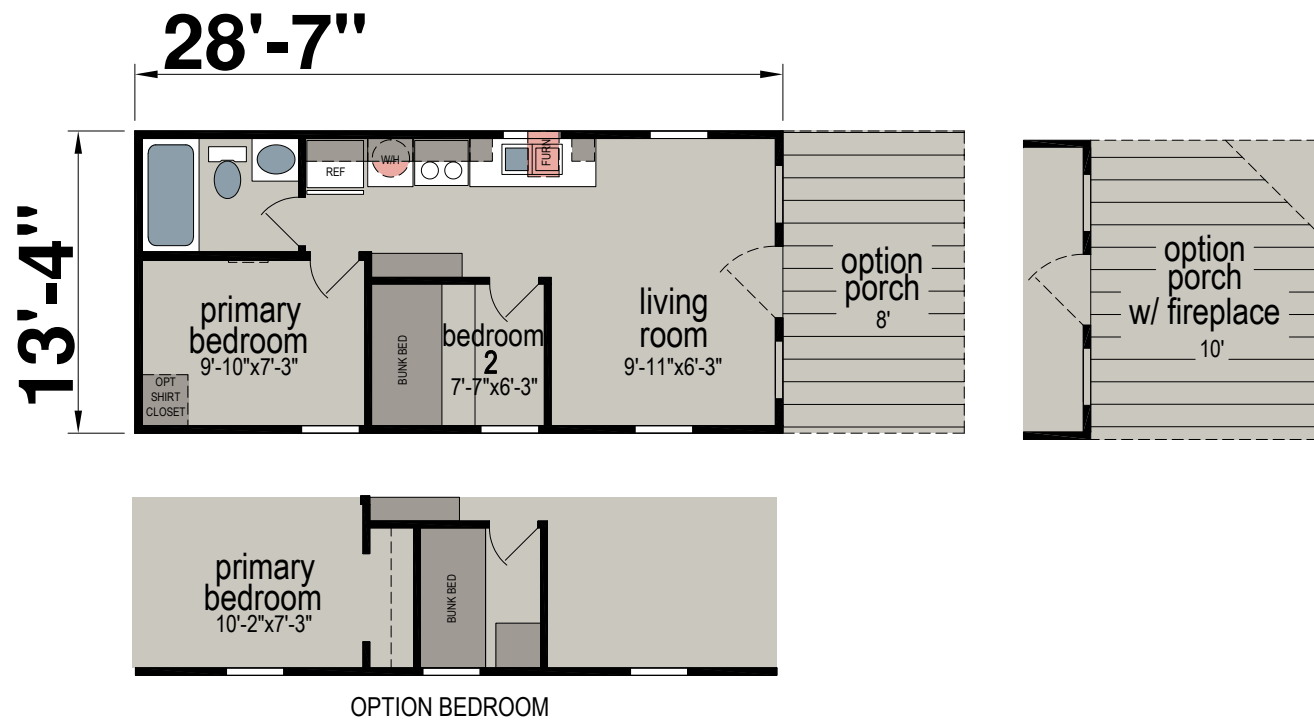
4151

One Bed | One Bath | 399 sq. ft.



4100

Two Bed | One Bath | 399 sq. ft.



Standard Features

Living Areas

- TV Jack
- 52" Paddle Fan

Kitchen

- Hardwood Cabinet Doors and Face Frames
- Stainless Steel Sink
- Single-Lever Faucet at Sink w/ Sprayer
- 18 Cu.Ft. Double-Door Frost-Free Refrigerator
- Space Saver Microwave Range Hood
- 30" Gas Range

Bathroom

- Hardwood Cabinet Doors and Face Frames
- Fiberglass Tub w/ Full Surround
- Single-Lever Faucet at Lav
- Privacy Lock
- Towel Bar and Paper Holder
- Fan with Light
- China Sink w/ Overflow and Pop-Up Drain

Bedroom

- TV Jack
- Twin over Full Bunk Bed w/ Safety Rail and Ladder

Additional Features

- ANSI 119.5 Approved
- 30-Year Architectural Shingles
- Vinyl Lap Siding
- Detachable Hitch
- Gas Furnace
- 20-Gallon Electric Water Heater
- Water Heater Bypass Valve
- PEX Water Lines
- Linoleum Flooring Throughout
- 6-Lite Craftsman Door
- Deadbolt at Door
- Pre-Finished Door Jambs
- Single-Hung Low-E Vinyl Windows
- Insulation: R-22 Roof, R-11 Floor, R-11 Walls

Additional Features (Cont.)

- CO2/Smoke Detector w/ Battery Backup & False Alarm Control
- Exterior Receptacle with GFI Breaker
- 30 lb. Roof Trusses
- LP Detector
- Fire Extinguisher
- 35' Power Cord

SHORE PARK  
CABINS

Due to continuous product development and improvement, prices, specifications, and materials are subject to change without notice or obligation.



# SHORE PARK



1023 US-61 | Lancaster, WI 53813

(608) 723-4171

