

THE CHISHOLM TRAIL NATIONAL BREEDING SHEEP SHOW

Sanctioned by



BEYOND THE RING
JUNIOR LIVESTOCK ASSOCIATION

**JANUARY
19-21, 2023**

**WILLIAMSON COUNTY
EXPO CENTER
TAYLOR, TX**

Schedule

THURSDAY, JANUARY 19

12-6PM: Move-in, Check-In
2PM: Sheep Skillathon
3PM: Sheep Judging Contest
5PM: Production Live Show
7PM: Awards Ceremony & Appreciation Dinner

FRIDAY, JANUARY 20

8AM: Open Show Other Breeds (Rambouillet, Delaine, Suffolk, Southdown, Hampshire, ORB, ORWB)
12PM: (or at the conclusion of the other breeds show) Open Dorper Show - White Dorper followed by Dorper & Open Show Supreme Drive

SATURDAY, JANUARY 21

8AM: Youth Showmanship followed by the Other Breeds Youth Show (Rambouillet, Delaine, Suffolk, Southdown, Hampshire, ORB, ORWB)
12PM: Youth Dorper Show - Dorper followed by White Dorper & Youth Show Supreme Drive

Judges

OPEN SHOW

Marvin Ensor

YOUTH SHOW

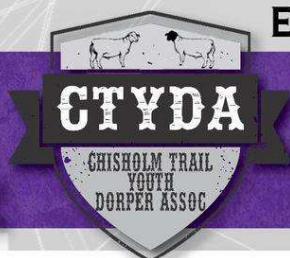
Aaron Jennings

ENTRY FEE: \$25 per head/discount if entering both shows

ENTRY DEADLINE: December 2, 2022




Hoffpauir
AUTO & OUTDOOR STORES
LAMPASAS, TX



AMANDA FOUST // 512.818.2048
EDIE MCDANIEL // 512.484.0392
WWW.CHISHOLMTRAILDORPERS.COM

Table of Contents

Event Schedule.....	3
Sheep Skillathon & Judging.....	4
Open Show Information.....	5-10
Youth Show Information.....	11-17
 Youth Bred & Owned Class.....	18
Youth Production Class.....	19-26

Chisholm Trail National 2023 Schedule

Thursday, January 19, 2023

12pm: Move-in, Check-in
2pm: Sheep Skillathon
3pm: Sheep Judging Contest
4pm: Production Interviews
5pm: Production Live Show
6pm: Check-in Deadline
7pm: Awards Ceremony & Appreciation Dinner

Friday, January 20, 2023

8am: Open Show, Other Breeds (Rambouillet, Delaine, Southdown, Hampshire, Suffolk, ORB & ORWB)
12pm: (or at the conclusion of the other breeds show) Open Dorper Show – White Dorper followed by Dorper & Open Show Supreme Drive

Saturday, January 22, 2023

8am: Youth Showmanship followed by Other Breeds Youth Show (Rambouillet, Delaine, Southdown, Hampshire, Suffolk ORB & ORWB)
12pm: (Or at the conclusion of the other breeds show) – Dorper followed by White Dorper Show & Youth Show Supreme Drive

Chisholm Trail National

Sheep Skillathon Competition

Presented By: Chisholm Trail Youth Dorper Association

Entry Fee - \$10.00 (\$25 late fee up to the day of the event)

Entry Deadline – December 2, 2022

Event Date and Time: Thursday January 19th, 2023 2pm

Contestant will compete in various categories of sheep knowledge for example: breeds of sheep, equipment, health scenarios, wool and aging. Test will all be written.

Age Groups: Junior - 9-11 years old, Intermediate - 12-14 years old, Senior - 15-18 years old (In High School)

Trophies will be awarded to first, second and third place in each division, as well as a Highpoint Overall Award.

Chisholm Trail National

Sheep Judging Competition

Presented By: Caleb Kott and Russell Kott

Entry Fee - \$10.00 (\$25 late fee up to the day of the event)

Entry Deadline – December 2, 2022

Event Date and Time: Thursday, January 19th, 2023 at 3:00 pm

Contestant will compete in judging sets of sheep ewes/rams from different breeds.

Age Groups: Junior - 9-11 years old, Intermediate - 12-14 years old, Senior - 15-18 years old (In High School)

Trophies will be awarded to first, second and third place in each division, as well as a Highpoint Overall Award.

Chisholm Trail National

BREEDING SHEEP SHOW

2023 OPEN SHOW

Presented By: Chisholm Trail Youth Dorper Association

Superintendents - Edie McDaniel & Amanda Foust

Judge – Marvin Ensor

Entry Fee - \$25.00

Entry Deadline – December 2, 2022

Late Entry – available through check in – \$100 per head

Check-In By: 6 PM Thursday, January 19, 2023

Arrival Time: 12 PM – 6 PM Thursday, January 19, 2023

Open Show Start Time: 8 AM, Friday, January 20, 2023

****Open to anyone in the U.S.**

Show Order: Rambouillet, Delaine-Merino, Southdown, Hampshire, Suffolk, ORB, ORWB, Dorper, & White Dorper

General Breeding Show Rules (All Breeds)

1. **Entries can be completed online (www.chisholmtraildorpers.com):**

2. There is plenty of pen space available. When you complete your early check-in form (via google docs) you will be able to make penning requests. Both parties will need to make a note on their forms.

3. Bedding (pine shavings) will be available for sale at check in. Shavings available are Suncoast 10 CF Large Flake Shavings for \$10/bag and pelleted shavings for \$10/bag. Pens are set up on packed dirt floors (brand new packed arena type dirt). **No Outside Bedding Allowed**, except straw. Straw is allowed for Rambouillet, Delaine-Merino & Other wool breeds. If you have any questions or concerns please contact Amanda at 512-818-2048.

4. All breeding sheep must be registered in the recognized flock books of their respective breeds by the day of check in (Thursday, January 19, 2023). Sheep not carrying proper ear identification at time of show will be barred from competition. The official certificate of registration must be presented, and association ear tags or tattoos must correspond with the certificate. Applications of transfer or pending registrations will not be accepted. **All rams and ewes must have a scrapie tag in their ear.**

5. **Number of Animals:** There is no limit on the number of breeding sheep entries an exhibitor may enter in an individual class. Exhibitor may only enter one group entry per class per breed. Group class entries must be done at the time of registration.

6. Premium Awards:

- Class Winners – Ribbons
- Group Winners - Rosettes
- Breed Champion & Reserve Breed Champion – Banner
- Supreme Champion, Reserve Supreme & 3rd Overall Ewe and Ram – Banner and Buckle

7. **Premier exhibitor:** Premier exhibitor awards will be awarded by breed to the exhibitor with the highest point count. Banners will be awarded to breed premier exhibitors. Prizes will be awarded to Overall Premier & Reserve Premier

Exhibitor. Points will be awarded for all individual & group classes. Points are NOT awarded for champion and reserve champions.

- 1st place – 5 points
- 2nd place – 4 points
- 3rd place – 3 points
- 4th place – 2 points
- 5th place – 1 point

8. Heelers will be allowed in the Open Breeding Sheep Show.

9. **Out of state exhibitors:** All breeding Sheep must be accompanied by a current (within 30 days) Certificate of Veterinary Inspection that meets all state requirements, issued by a certified veterinarian. Breeding rams 6 months of age or older from **out-of-state** must have a negative **Brucella Ovis ELISA test** within 30 days prior to being entered in a show, fair or exhibition, or they must come from a Brucella Ovis-free flock. The test results or herd number must be written on the certificate of veterinary inspection.

10. **Texas Exhibitors:** All breeding Sheep must be accompanied by a current (within 30 days) Certificate of Veterinary Inspection that meets all state requirements, issued by a certified veterinarian.

11. Animals showing signs of ringworm, fungus or other communicable diseases will not be allowed to show and must be removed from show grounds.

Rambouillet, Delaine-Merino, Southdown, Hampshire, Suffolk, ORB and ORWB Rules

1. Fitting rules – Hampshire, Suffolk and Southdowns will need to be sheared above the knees and hocks and **no belly wool is allowed**. If you enter the check-in area with belly wool, you will be asked to shear it off before entering the ring. Rambouillet, Delaine-Merino, ORB and ORWB can be shown according to their breed standard.
2. Sheep will be entered in classes based on their teeth (except for the Fall 2020 lamb class, which will go by registration papers). Owners will be responsible for checking teeth prior to show and ensuring animals are entered in the correct class. The TOP 4 placing animals in each class will have their teeth checked by a show volunteer. **If any animal does not meet the class requirements, they will be disqualified and WILL NOT be moved to the appropriate age class. If you are not sure about your animal's age based on teeth, please find Amanda Foust.** She can check your animal's teeth and assist you with making sure your animal is entered in the correct class.
3. **ORB & ORWB Classes**
 - a. ORB – Dorset, Shropshire, Dorset Advantage
 - b. ORWB – Lincoln, Border Leicesters, Corriedale, Columbia, Cotswold, Cheviot)
4. **Animals will show based on their teeth at the time of the show:**
 - a) Lamb class – Sheep carrying all milk teeth; Lambs showing either or part of their first pair of permanent incisors may not show in the lamb classes.
 - b) 2 tooth class – Sheep showing their first pair of permanent incisors. Sheep which have dropped their central pair of milk teeth and show one or more of their first pair of permanent incisors may show in the 2 tooth class.
 - c) Aged class - 4 to 8 tooth class – Sheep showing more than their first set of permanent incisors or have dropped one or more of their milk teeth from the second set of incisors. However, sheep must not have lost any of their 8 adult permanent incisors.
5. The Fall 2022 Lamb classes will be animals with birthdays from September 1, 2022 through October 31, 2022 on their registration papers.

Open Show			
RAMBOUILLET		Delaine-Merino	
CLASS		CLASS	
1	Fall 2022 Ram Lamb (9/1/22-10/31/22)	17	Fall 2022 Ram Lamb (9/1/22-10/31/22)
2	Ram Lamb	18	Ram Lamb
3	Two Tooth Ram	19	Two Tooth Ram
4	Aged Ram	20	Aged Ram
5	Champion Ram	21	Champion Ram
6	Reserve Champion Ram	22	Reserve Champion Ram
7	Pair of Rams	23	Pair of Rams
8	Fall 2022 Ewe Lamb (9/1/22-10/31/22)	24	Fall 2022 Ewe Lamb (9/1/22-10/31/22)
9	Ewe Lamb	25	Ewe Lamb
10	Two Tooth Ewe	26	Two Tooth Ewe
11	Aged Ewe	27	Aged Ewe
12	Champion Ewe	28	Champion Ewe
13	Reserve Champion Ewe	29	Reserve Champion Ewe
14	Pair of Ewes	30	Pair of Ewes
15	Pair of Sheep	31	Pair of Sheep
16	Flock	32	Flock
**If ewe lamb classes are larger than 25 they will be split			

Suffolk		Southdown	
CLASS		CLASS	
33	Fall 2022 Ram Lamb (9/1/22-10/31/22)	49	Fall 2022 Ram Lamb (9/1/22-10/31/22)
34	Ram Lamb	50	Ram Lamb
35	Two Tooth Ram	51	Two Tooth Ram
36	Aged Ram	52	Aged Ram
37	Champion Ram	53	Champion Ram
38	Reserve Champion Ram	54	Reserve Champion Ram
39	Pair of Rams	55	Pair of Rams
40	Fall 2022 Ewe Lamb (9/1/22-10/31/22)	56	Fall 2022 Ewe Lamb (9/1/22-10/31/22)
41	Ewe Lamb	57	Ewe Lamb
42	Two Tooth Ewe	58	Two Tooth Ewe
43	Aged Ewe	59	Aged Ewe
44	Champion Ewe	60	Champion Ewe
45	Reserve Champion Ewe	61	Reserve Champion Ewe
46	Pair of Ewes	62	Pair of Ewes
47	Pair of Sheep	63	Pair of Sheep
48	Flock	64	Flock
**If ewe lamb classes are larger than 25 they will be split			

Hampshire		ORB	
CLASS		CLASS	
65	Fall 2022 Ram Lamb (9/1/22-10/31/22)	81	Fall 2022 Ram Lamb (9/1/22-10/31/22)
66	Ram Lamb	82	Ram Lamb
67	Two Tooth Ram	83	Two Tooth Ram
68	Aged Ram	84	Aged Ram
69	Champion Ram	85	Champion Ram
70	Reserve Champion Ram	86	Reserve Champion Ram
71	Pair of Rams	87	Pair of Rams
72	Fall 2022 Ewe Lamb (9/1/22-10/31/22)	88	Fall 2022 Ewe Lamb (9/1/22-10/31/22)
73	Ewe Lamb	89	Ewe Lamb
74	Two Tooth Ewe	90	Two Tooth Ewe
75	Aged Ewe	91	Aged Ewe
76	Champion Ewe	92	Champion Ewe
77	Reserve Champion Ewe	93	Reserve Champion Ewe
78	Pair of Ewes	94	Pair of Ewes
79	Pair of Sheep	95	Pair of Sheep
80	Flock	96	Flock
**If ewe lamb classes are larger than 25 they will be split			

ORWB	
CLASS	
97	Fall 2022 Ram Lamb (9/1/22-10/31/22)
98	Ram Lamb
99	Two Tooth Ram
100	Aged Ram
101	Champion Ram
102	Reserve Champion Ram
103	Pair of Rams
104	Fall 2022 Ewe Lamb (9/1/22-10/31/22)
105	Ewe Lamb
106	Two Tooth Ewe
107	Aged Ewe
108	Champion Ewe
109	Reserve Champion Ewe
110	Pair of Ewes
111	Pair of Sheep
112	Flock

White Dorper			
CLASS		CLASS	
113	Fall 2022 Ram Lamb (9/1/22-10/31/22)	133	Winter Ewe Lamb (Feb 2022)
114	Summer Ram Lamb (5/1/22-8/31/22)	134	Junior Champion Ewe
115	Spring Ram Lamb (April 2022)	135	Reserve Junior Champion Ewe
116	Spring Ram Lamb (March 2022)	136	Winter Ewe Lamb (Jan 2022)
117	Winter Ram Lamb (1/1/22-2/29/22)	137	Late Fall Ewe Lamb (11/1/21-12/31/21)
118	Junior Champion Ram	138	Early Fall Ewe Lamb (9/1/21-10/31/21)
119	Reserve Junior Champion Ram	139	Pair of Ewe Lambs
120	2022 Fall Ram Lamb (9/1/22-12/31/22)	140	Intermediate Champion Ewe
121	Pair of Ram Lambs	141	Reserve Intermediate Champion Ewe
122	Yearling Rams (9/1/21-8/31/22)	142	Junior Yearling Ewes (1/1/21-8/31/21)
123	Aged Ram (8/31/20 and older)	143	Senior Yearling Ewes (9/1/20-12/31/21)
124	Pair of Senior Rams (Yearling/Aged)	144	Aged Ewes (8/30/20 and older)
125	Senior Champion Ram	145	Pair of Senior Ewes (Yearling/Aged)
126	Reserve Senior Champion Ram	146	Senior Champion Ewe
127	Grand Champion Ram	147	Reserve Senior Champion Ewe
128	Reserve Grand Champion Ram	148	Grand Champion Ewe
129	Fall 2022 Ewe Lamb (9/1/22-10/31/22)	149	Reserve Grand Champion Ewe
130	Summer Ewe Lamb (5/1-8/31/22)	150	Pair of Sheep
131	Spring Ewe Lamb (April 2022)	151	Flock
132	Spring Ewe Lamb (March 2022)		

Dorper			
CLASS		CLASS	
152	Fall 2022 Ram Lamb (9/1/22-10/31/22)	172	Winter Ewe Lamb (Feb 2022)
153	Summer Ram Lamb (5/1/22-8/31/22)	173	Junior Champion Ewe
154	Spring Ram Lamb (April 2022)	174	Reserve Junior Champion Ewe
155	Spring Ram Lamb (March 2022)	175	Winter Ewe Lamb (Jan 2022)
156	Winter Ram Lamb (1/1/22-2/29/22)	176	Late Fall Ewe Lamb (11/1/21-12/31/21)
157	Junior Champion Ram	177	Early Fall Ewe Lamb (9/1/21-10/31/21)
158	Reserve Junior Champion Ram	178	Pair of Ewe Lambs
159	2022 Fall Ram Lamb (9/1/22-12/31/22)	179	Intermediate Champion Ewe
160	Pair of Ram Lambs	180	Reserve Intermediate Champion Ewe
161	Yearling Rams (9/1/21-8/31/22)	181	Junior Yearling Ewes (1/1/21-8/31/21)
162	Aged Ram (8/31/20 and older)	182	Senior Yearling Ewes (9/1/20-12/31/21)
163	Pair of Senior Rams (Yearling/Aged)	183	Aged Ewes (8/30/20 and older)
164	Senior Champion Ram	184	Pair of Senior Ewes (Yearling/Aged)
165	Reserve Senior Champion Ram	185	Senior Champion Ewe
166	Grand Champion Ram	186	Reserve Senior Champion Ewe
167	Reserve Grand Champion Ram	187	Grand Champion Ewe
168	Fall 2022 Ewe Lamb (9/1/22-10/31/22)	188	Reserve Grand Champion Ewe
169	Summer Ewe Lamb (5/1/22-8/31/22)	189	Pair of Sheep
170	Spring Ewe Lamb (April 2022)	190	Flock
171	Spring Ewe Lamb (March 2022)		

SUPREME CHAMPION RAM & EWE	
CLASS	
191	Supreme Champion Ram (selected from all champion rams)
192	Supreme Reserve Champion Ram (selected from all champion rams)
193	Supreme 3rd Overall Ram (selected from all champion rams)
194	Supreme Champion Ewe (selected from all champion ewes)
195	Supreme Reserve Champion Ewe (selected from all champion ewes)
196	Supreme 3rd Overall Ram (selected from all champion ewes)

Chisholm Trail National

BREEDING SHEEP SHOW

2023 YOUTH SHOW

Presented By: Chisholm Trail Youth Dorper Association

Superintendents - Edie McDaniel & Amanda Foust

Judge – Aaron Jennings

Entry Fee - \$25.00

Entry Deadline – December 2, 2022

Late Entry – available through check in – \$100 per head

Arrival Time: 12 PM – 6 PM Thursday, January 19, 2023

Check-In By: 6 PM Thursday, January 19, 2023

Youth Showmanship: 8 AM Saturday, January 21, 2023

Youth Show Start Time: 8 AM, Saturday, January 21, 2023 (following showmanship)

****Open to any youth in the U.S. that are 21 and under**

Show Order: Rambouillet, Delaine-Merino, Southdown, Hampshire, Suffolk, ORB, ORWB, White Dorper & Dorper

General Youth Breeding Show Rules (All Breeds)

1. **Entries can be completed online (www.chisholmtraildorpers.com):**
2. There is plenty of pen space available. When you complete your early check-in form (via google docs) you will be able to make penning requests. Both parties will need to make a note on their forms.
3. Bedding (pine shavings) will be available for sale at check in. Shavings available are Suncoast 10 CF Large Flake Shavings for \$10/bag and pelleted shavings for \$10/bag. Pens are set up on packed dirt floors (brand new packed arena type dirt). **No Outside Bedding Allowed**, except straw. Straw is allowed for Rambouillet, Delaine-Merino & Other Wool breeds. If you have any questions or concerns, please contact Amanda at 512-818-2048.
4. All breeding sheep must be registered in the recognized flock books of their respective breeds in the exhibitor's name by **January 19th, 2023**. Sheep not carrying proper ear identification at time of showing will be barred from competition. The official certificate of registration must be presented, and association ear tags or tattoos must correspond with the certificate. Applications of transfer or pending registrations will not be accepted. **Entries must be in the youth's name to qualify (partnerships between youth members are allowed). All rams and ewes must have a scrapie tag in the ear.**
5. **Number of Animals:** There is no limit on the number of breeding sheep entries an exhibitor may enter in an individual class. Exhibitor may only enter one group entry per class per breed. Group class entries must be done at the time of registration.

6. Awards:

- Class Winners – Ribbons
- Group Winners - Rosettes
- Breed Champion & Reserve Champions – Buckle and Banner
- Supreme Champion, Reserve Supreme & 3rd Overall – Buckle and Banner

7. **Premier exhibitor:** Premier exhibitor awards will be awarded by breed to the exhibitor with the highest point count. Banners will be awarded to breed premier exhibitors. Buckles and Banners will be awarded to Overall Premier & Reserve Premier Exhibitor. Points will be awarded for all individual & group classes. Points are not awarded for champion and reserve champions.

- 1st place – 5 points
- 2nd place – 4 points
- 3rd place – 3 points
- 4th place – 2 points
- 5th place – 1 point

8. **Heelers** will be allowed in the breeding show, if they are exhibitors in the show or are members of 4-H or FFA. If you are out of high school 18-21 you must be entered as an exhibitor in the show or on the registration papers as the owner or as partner on the papers to be able to heel with the exhibitor of said animal.

9. **Out of state exhibitors:** All breeding sheep must be accompanied by a current (within 30 days) Certificate of Veterinary Inspection that meets all state requirements, issued by a certified veterinarian. Breeding rams 6 months of age or older from **out-of-state** must have a negative **Brucella Ovis ELISA test** within 30 days prior to being entered in a show, fair or exhibition, or they must come from a Brucella Ovis-free flock. The test results or herd number must be written on the certificate of veterinary inspection.

10. **Texas Exhibitors:** All breeding Sheep must be accompanied by a current (within 30 days) Certificate of Veterinary Inspection that meets all state requirements, issued by a certified veterinarian.

11. Animals showing signs of ringworm, fungus or other communicable diseases will not be allowed to show and must be removed from show grounds.

Rambouillet, Delaine-Merino, Southdown, Hampshire, Suffolk, ORB, ORWB Rules

1. **Fitting rules** – Hampshire, Suffolk, Southdown will need to be sheared above the knees and hocks and **no belly wool is allowed**. If you enter the check-in area with belly wool, you will be asked to shear it off before entering the ring. Rambouillet, Delaine-Merino, ORB, ORWB can be shown according to their breed standard.
2. **Breeding Ages:** For the purpose of this show, the following will apply regarding ages of breeding sheep: Tothing of sheep to determine the age class in which they are shown will be determined by the exhibitor before check-in. Sheep with the following tooth development at check-in time will show in the listed classes. The top 4 placing animals in each class will be toothed at the conclusion of each class. If the tothing does not match the class, the entry will be disqualified. **If you are not sure about your animal's age based on teeth, please find Amanda. She can check your animal's teeth and assist you with making sure your animal is entered in the correct class.**
3. **ORB & ORWB Classes**
 - a. ORB – Dorset, Shropshire, Dorset Advantage
 - b. ORWB – Lincoln, Border Leicesters, Corriedale, Columbia, Cotswold, Cheviot

4. **Animals will show based on their teeth at the time of the show:**
- a. **Lamb class** – Sheep carrying all milk teeth; Lambs showing either or part of their first pair of permanent incisors may not show in the lamb classes.
 - b. **2 tooth class** – Sheep showing their first pair of permanent incisors. Sheep which have dropped their central pair of milk teeth and show one or more of their first pair of permanent incisors may show in the 2 tooth class.
 - c. **Aged class** - 4 to 8 tooth class – Sheep showing more than their first set of permanent incisors or have dropped one or more of their milk teeth from the second set of incisors. However, sheep must not have lost any of their 8 adult permanent incisors.
5. The Fall 2022 Lamb classes will be animals with birthdays from September 1st, 2022 through October 31st, 2022 on their registration papers.

Youth Showmanship

Youth Showmanship will take place Saturday, January 21, 2023 at 8AM

Age Divisions

Tiny Peewee - 8 and under, assisted by another youth exhibitor entered in the show.

Peewee - 8 and under unassisted.

Junior - 9-11 years old

Intermediate - 12-14 years old

Senior - 15-18 years old (In High School)

Supreme Showman (Chosen from Peewee, Junior, Intermediate, and Senior only)

Super Senior – 18-21 (Out of High School)

Buckles Awarded to Champion and Reserve Champion from each division, buckle keychains awarded to third place in each division. Buckle and Banner awarded to Supreme Showman.

******You must have an animal entered in the Youth Show to participate in the Youth Showmanship, except for the Tiny Peewee class. Division will be based on the age as of the day of the show.**

Youth Show			
RAMBOUILLET		Delaine-Merino	
CLASS		CLASS	
200	Fall 2022 Ram Lamb (9/1/22-10/31/22)	216	Fall 2022 Ram Lamb (9/1/22-10/31/22)
201	Ram Lamb	217	Ram Lamb
202	Two Tooth Ram	218	Two Tooth Ram
203	Aged Ram	219	Aged Ram
204	Champion Ram	220	Champion Ram
205	Reserve Champion Ram	221	Reserve Champion Ram
206	Pair of Rams	222	Pair of Rams
207	Fall 2022 Ewe Lamb (9/1/22-10/31/22)	223	Fall 2022 Ewe Lamb (9/1/22-10/31/22)
208	Ewe Lamb	224	Ewe Lamb
209	Two Tooth Ewe	225	Two Tooth Ewe
210	Aged Ewe	226	Aged Ewe
211	Champion Ewe	227	Champion Ewe
212	Reserve Champion Ewe	228	Reserve Champion Ewe
213	Pair of Ewes	229	Pair of Ewes
214	Pair of Sheep	230	Pair of Sheep
215	Flock	231	Flock
**If ewe lamb classes are larger than 25 they will be split			

Suffolk		Southdown	
CLASS		CLASS	
232	Fall 2022 Ram Lamb (9/1/22-10/31/22)	247	Fall 2022 Ram Lamb (9/1/22-10/31/22)
233	Ram Lamb	249	Ram Lamb
234	Two Tooth Ram	250	Two Tooth Ram
235	Aged Ram	251	Aged Ram
236	Champion Ram	252	Champion Ram
237	Reserve Champion Ram	253	Reserve Champion Ram
238	Pair of Rams	254	Pair of Rams
239	Fall 2022 Ewe Lamb (9/1/22-10/31/22)	255	Fall 2022 Ewe Lamb (9/1/22-10/31/22)
240	Ewe Lamb	256	Ewe Lamb
241	Two Tooth Ewe	257	Two Tooth Ewe
242	Aged Ewe	258	Aged Ewe
243	Champion Ewe	259	Champion Ewe
244	Reserve Champion Ewe	260	Reserve Champion Ewe
245	Pair of Ewes	261	Pair of Ewes
246	Pair of Sheep	262	Pair of Sheep
247	Flock	263	Flock
**If ewe lamb classes are larger than 25 they will be split			

Hampshire		ORB	
CLASS		CLASS	
264	Fall 2022 Ram Lamb (9/1/22-10/31/22)	280	Fall 2022 Ram Lamb (9/1/22-10/31/22)
265	Ram Lamb	281	Ram Lamb
266	Two Tooth Ram	282	Two Tooth Ram
267	Aged Ram	283	Aged Ram
268	Champion Ram	284	Champion Ram
269	Reserve Champion Ram	285	Reserve Champion Ram
270	Pair of Rams	286	Pair of Rams
271	Fall 2022 Ewe Lamb (9/1/22-10/31/22)	287	Fall 2022 Ewe Lamb (9/1/22-10/31/22)
272	Ewe Lamb	288	Ewe Lamb
273	Two Tooth Ewe	289	Two Tooth Ewe
274	Aged Ewe	290	Aged Ewe
275	Champion Ewe	291	Champion Ewe
276	Reserve Champion Ewe	292	Reserve Champion Ewe
277	Pair of Ewes	293	Pair of Ewes
278	Pair of Sheep	294	Pair of Sheep
279	Flock	295	Flock
**If ewe lamb classes are larger than 25 they will be split			

ORWB	
CLASS	
296	Fall 2022 Ram Lamb (9/1/22-10/31/22)
297	Ram Lamb
298	Two Tooth Ram
299	Aged Ram
300	Champion Ram
301	Reserve Champion Ram
302	Pair of Rams
303	Fall 2022 Ewe Lamb (9/1/22-10/31/22)
304	Ewe Lamb
305	Two Tooth Ewe
306	Aged Ewe
307	Champion Ewe
308	Reserve Champion Ewe
309	Pair of Ewes
310	Pair of Sheep
311	Flock

Dorper			
CLASS		CLASS	
312	Fall 2022 Ram Lamb (9/1/22-10/31/22)	332	Winter Ewe Lamb (Feb 2022)
313	Summer Ram Lamb (5/1/22-8/31/22)	333	Junior Champion Ewe
314	Spring Ram Lamb (April 2022)	334	Reserve Junior Champion Ewe
315	Spring Ram Lamb (March 2022)	335	Winter Ewe Lamb (Jan 2022)
316	Winter Ram Lamb (1/1/22-2/29/22)	336	Late Fall Ewe Lamb (11/1/21-12/31/21)
317	Junior Champion Ram	337	Early Fall Ewe Lamb (9/1/21-10/31/21)
318	Reserve Junior Champion Ram	338	Pair of Ewe Lambs
319	2022 Fall Ram Lamb (9/1/22-12/31/22)	339	Intermediate Champion Ewe
320	Pair of Ram Lambs	340	Reserve Intermediate Champion Ewe
321	Yearling Rams (9/1/21-8/31/22)	341	Junior Yearling Ewes (1/1/21-8/31/21)
322	Aged Ram (8/31/20 and older)	342	Senior Yearling Ewes (9/1/20-12/31/21)
323	Pair of Senior Rams (Yearling/Aged)	343	Aged Ewes (8/30/20 and older)
324	Senior Champion Ram	344	Pair of Senior Ewes (Yearling/Aged)
325	Reserve Senior Champion Ram	345	Senior Champion Ewe
326	Grand Champion Ram	346	Reserve Senior Champion Ewe
327	Reserve Grand Champion Ram	347	Grand Champion Ewe
328	Fall 2022 Ewe Lamb (9/1/22-10/31/22)	348	Reserve Grand Champion Ewe
329	Summer Ewe Lamb (5/1/22-8/31/22)	349	Pair of Sheep
330	Spring Ewe Lamb (April 2022)	350	Flock
331	Spring Ewe Lamb (March 2022)		

White Dorper			
CLASS		CLASS	
351	Fall 2022 Ram Lamb (9/1/22-10/31/22)	371	Winter Ewe Lamb (Feb 2022)
352	Summer Ram Lamb (5/1/22-8/31/22)	372	Junior Champion Ewe
353	Spring Ram Lamb (April 2022)	373	Reserve Junior Champion Ewe
354	Spring Ram Lamb (March 2022)	374	Winter Ewe Lamb (Jan 2022)
355	Winter Ram Lamb (1/1/22-2/29/22)	375	Late Fall Ewe Lamb (11/1/21-12/31/21)
356	Junior Champion Ram	376	Early Fall Ewe Lamb (9/1/21-10/31/21)
357	Reserve Junior Champion Ram	377	Pair of Ewe Lambs
358	2022 Fall Ram Lamb (9/1/22-12/31/22)	378	Intermediate Champion Ewe
359	Pair of Ram Lambs	379	Reserve Intermediate Champion Ewe
360	Yearling Rams (9/1/21-8/31/22)	380	Junior Yearling Ewes (1/1/21-8/31/21)
361	Aged Ram (8/31/20 and older)	381	Senior Yearling Ewes (9/1/20-12/31/21)
362	Pair of Senior Rams (Yearling/Aged)	382	Aged Ewes (8/30/20 and older)
363	Senior Champion Ram	383	Pair of Senior Ewes (Yearling/Aged)
364	Reserve Senior Champion Ram	384	Senior Champion Ewe
365	Grand Champion Ram	385	Reserve Senior Champion Ewe
366	Reserve Grand Champion Ram	386	Grand Champion Ewe
367	Fall 2022 Ewe Lamb (9/1/22-10/31/22)	387	Reserve Grand Champion Ewe
368	Summer Ewe Lamb (5/1-8/31/22)	388	Pair of Sheep
369	Spring Ewe Lamb (April 2022)	389	Flock
370	Spring Ewe Lamb (March 2022)		

SUPREME CHAMPION RAM & EWE	
CLASS	
390	Supreme Champion Ram (selected from all champion rams)
391	Supreme Reserve Champion Ram (selected from all champion rams)
392	Supreme 3rd Overall Ram (selected from all champion rams)
393	Supreme Champion Ewe (selected from all champion ewes)
394	Supreme Reserve Champion Ewe (selected from all champion ewes)
395	Supreme 3rd Overall Ram (selected from all champion ewes)

Youth Bred & Owned Division

The National Show

Check-In: Thursday, January 19th 12-6pm

Friday, January 20th at the conclusion of the Open Show



1. Animal must be registered with the ADSBS no later than Jan 19, 2023
2. Animal must be born to an ewe that was in the exhibitor's name and possession at the time of breeding.
3. Animals can be of any age, however papers for the animal being entered as well as the dam must be present at check-in.
4. There will be one class for each breed and sex, and that will be the champion for this inaugural year of this class.
5. White Dorper Ewe, White Dorper Ram, Dorper Ewe & Dorper Ram

Youth Sheep Production Division

The National Show

January 19, 2023

Record books due by 5pm 1/15/2023

Interviews – 1/19/2023

Live Show - 1/19/2021 at 5pm

Cost - \$25 limit 2 entries per exhibitor

Enter online through the CTYDA website

Purpose-this division is open to any registered breed of sheep. The goal is to showcase production females and their offspring, as applicable to sheep production, along with instilling good record keeping skills, money handling skills and public speaking in youth.

Record books of gains and associated costs to produce each animal will be kept and turned into the show secretary by 5pm on 1/19/2023 for judging. Forms should be put in a binder with the exhibitor's name. Feel free to add charts, graphs, pictures to complete your project. Final placing and determination of "Champion producer" will be based off a combined score of the following

Live Show Ewe & lamb (production based) 35%

Live Show Ewe & Lamb (placing in the age division) 35%

Record book 25%

Interview 5%

Entry period 10/5/22 – 12/2/22

Entry Fee: \$25

1. This show is open to all breeds of sheep, but they must be registered
2. The ewe and lamb(s) MUST be owned by the exhibitor or an immediate family member.
3. The ewe MUST have lambed after Sept 1, 2022 and MUST be the dam of the lamb(s) being shown
 4. Lambs may be wethers, ewes or rams.
 5. Sheep will be shown unhaltered(loose)
6. Live animals will be divided into workable classes at discretion of the show officials.
7. An exhibitor may show no more than (2) ewe/lamb projects in this division.
8. Ribbons will be awarded in each area of the competition thru 6th place.
9. A champion and reserve champion buckle will be awarded based on the combined score above.
10. For questions, more information or to have the forms emailed, please contact
11. Edie McDaniel 512-484-0392 or info@chisholmtrailorpers.com

Judging Points

Live Show Ewe & Lamb

Ewes will be properly washed and sheared for this competition, based on major show guidelines for their breed. Ewes will be judged from a commercial production standpoint. Lambs will be properly washed and sheared for this competition (if weaned from the ewe). Lambs will be judged from a commercial production standpoint. Cull faults will still be penalized as will breeding soundness issues. Animals will be shown unaltered (loose). This will also include placing the projects in a 1st – 5th place and awarding points for these placings as well.

Record Book

The record book will encompass data on the ewe and lamb. Weight gains of the lamb will be recorded by the youth in their record book, along with monetary output of care for both the ewe and the lamb. A panel of 3 people will judge the record books on neatness, ease of reading, knowledge of project in relation to a commercial setting and effort by the youth member in maintaining accurate flock records. The two judge's scores will be combined for the final record book score. Record books will be judged, and scores calculated before the start of the show. They will be displayed during the sheep production show.

Interview

A live interview, by a panel of 2 individuals, will be conducted on 1/19/23 between 2-6pm. Interviews will be no longer than 4 minutes each. Topics and potential questions will relate to sheep husbandry, agriculture, their own animals and record books. The three scores will be combined for the final interview score.

Point schedule

1st-7 points. 2nd-6 points. 3rd-5 points. 4th-4 points. 5th-3 points. 6th-2 points. All others-1 point.

Production Class
Interview Scoring Form
Exhibitor:

Score each area 1-5

1 being needs improvement, 5 being excellent.

Point of scoring	Score	Comments
Knowledge of their specific animals		

Ability to determine desirable traits in a production animal		
Understanding of importance of profitability when raising stock		
Ease at answering questions and discussing their animals and future plans within the sheep industry		

Final Score for Interview:_____

Additional Comments:

Judge's Name:_____

Judge's Signature:_____ Date:_____

Production Class
Record Book Scoring Form

Exhibitor:

Number:

Score each area 1-5

1 being needs improvement, 5 being excellent.

Point of scoring	Score	Comments
Productivity of Ewe on paper		
Productivity of Lamb(s) on paper		
Accuracy of Records		
Neatness of Records		

Final Score for Record Book:_____

Additional Comments:

Judge's Name:_____

Judge's Signature:_____ Date:_____

Sheep Production Class
Ewe & Lamb live Scoring form

Exhibitor:

Ewe Number:

Instructions: Score each area below 1-5, 1 being needs improvement, 5 being excellent. The purpose of this scorecard is to evaluate the productivity of the youth's ewe and lamb in terms of an actual production operation. Please feel free to leave comments.

Point of scoring	Score	Comments
Condition of Ewe - Take into consideration the age of lambs and condition of them as well.		
Condition of Lamb - Lambs should be carrying excellent weight and be healthy looking.		
Conformation of Ewe -Evaluate the ewe in terms of longevity and productivity. Cull faults should be severely penalized as should poor teeth or udders.		
Conformation of lamb -Evaluate the lamb's conformation, cull faults should be severely penalized.		
Knowledge of youth on their project -the exhibitor should readily be able to answer simple age appropriate questions regarding his/her project.		

Final Score for Live Show: _____

Additional Comments:

Judge's Name: _____

Judge's Signature: _____ Date: _____

Examples of record book in google slides:

- Slide 1 – cover page
- Slide 2 – Ewe Information
- Slide 3 – Lamb Information (if twins duplicate the table and fill one in for each lamb)
- Slide 4 – 8 – exhibitor can populate with whatever information they would like about their project.
- Slides 9-11 – judges scoring. Exhibitor will be able to access the book after the show to review the feedback.

Annabelle, Bonnie & Clyde



Ewe Information - Input costs thru pregnancy

Tag# and Name: M B71R W R71NCH 2007 "Annabelle"

Breed and Birthdate: White Dorper 5/20/2020

Sire: M B71R W R71NCH 810 "PRETTY BOY"

Dam: M B71R W R71NCH 1605 "MOLLY"

Month	Monthly Grain (lbs)	Grain Cost per month	Monthly Forage (lbs)	Forage Cost / month	Misc (explain)	Total Monthly Costs
NOV. 2021	30 POUNDS	\$8.70	180 POUNDS	\$21.00	DOCS \$1.10	\$30.80
DEC. 2021	31 POUNDS	\$8.99	180 POUNDS	\$21.00	DOCS \$1.10	\$31.09
JAN. 2022	31 POUNDS	\$8.99	180 POUNDS	\$21.00	DOCS \$1.10	\$31.09
FEB. 2022	28 POUNDS	\$8.12	180 POUNDS	\$21.00	DOCS \$1.10	\$30.22
MARCH 2022	10 POUNDS	\$2.90	180 POUNDS	\$21.00	DOCS \$1.10	\$25.00
APRIL 2022	27 POUNDS	\$7.83	180 POUNDS	\$21.00	DOCS \$1.10	\$29.93
MAY 2022	31 POUNDS	\$8.99	180 POUNDS	\$21.00	DOCS \$1.10	\$31.09
Totals	188 POUNDS	\$54.52	1,260 LBS	\$147.00	\$7.70	\$209.22

Average cost per month to maintain ewe thru weaning of lamb: \$29.89

Lamb Information - Input Costs

Tag# and Name: Ram lamb 48 "Clyde"

Breed and Birthdate: White Dorper 4/3/2022

Sire: M BTR W RANCH 917 "Grambo"

Dam: M BTR W RANCH 2007 "Annabelle"

Birth Weight: 9.9 LBS Weaning Weight: N/A Age Weaned: N/A Final Weight: 51 LBS on 5/29 (56 days old)

Month	Monthly Grain (lbs)	Grain Cost per month	Monthly Forage (lbs)	Forage Cost per month	Misc (explain)	Total Monthly Costs
April 2022	3.5 pounds	\$1.02	1 pounds	\$0.12	DOCS 1.10	\$2.24
May 2022	15 pounds	\$4.35	5 pounds	\$0.60	DOCS 1.10	\$6.05
Totals	18.5 pounds	\$5.37	6 pounds	\$0.72	\$2.20	\$8.29

Total pounds gained: 41.1 lbs Average Daily Gain (lbs): .73 lbs Cost per pound to produce lamb: \$0.21

Lamb Information - Input Costs

Tag# and Name: Ewe Lamb 47 "Bonnie"

Breed and Birthdate: White Dorper 4/3/2022

Sire: M BTR W RANCH 917 "Grambo"

Dam: M BTR W RANCH 2007 "Annabelle"

Birth Weight: 7.8 LBS Weaning Weight: N/A Age Weaned: N/A Final Weight: 48 LBS on 5/29 (56 days old)

Month	Monthly Grain (lbs)	Grain Cost per month	Monthly Forage (lbs)	Forage Cost per month	Misc (explain)	Total Monthly Costs
April 2022	3.5 pounds	\$1.02	1 pounds	\$0.12	DOCS 1.10	\$2.24
May 2022	15 pounds	\$4.35	5 pounds	\$0.60	DOCS 1.10	\$6.05
Totals	18.5 pounds	\$5.37	6 pounds	\$0.72	\$2.20	\$8.29

Total pounds gained: 40.2 lbs Average Daily Gain (lbs): .72 lbs Cost per pound to produce lamb: \$0.21

Lamb's Pedigree

EW E American Dorper Sheep Breeders' Society **EW E**

REGISTRATION CERTIFICATE

Flock Name and Number	Registration Number	Permanent ID (if any)	Color Type
M Bar W Ranch 2007	EP144085		White Dorper

Birth Date	Type of Birth	Service	Embryo	Inspection Type	Percentage
5/20/2020	Single	Natural Intermation	Not Applicable		Patched

SIRE:

Back	Side
M Bar W Ranch 810 EP120066	Stock Ranch Dorper 1751 EP100029
M Bar W Ranch 811 EP100069	Yanna Lay 31390 EP1073606
M Bar W Ranch 149 EP100058	Yanna Lay 31380 EP1000235
	Yanna Lay 32008 EP1000272

DAM:

Back	Side
M Bar W Ranch 149 EP100058	Stock Ranch Dorper 1751 EP100029
Yanna Lay 31380 EP1000235	Stock Ranch Dorper 1405 EP1073606
Yanna Lay 31380 EP1000235	Yanna Lay 31390 EP1073606
Yanna Lay 31380 EP1000235	Yanna Lay 31390 EP1073606

Breeder: Alfred McDonald, PO Box 779, Thornville, TX 76787

Previous Owner(s): Alfred McDonald, PO Box 779, Thornville, TX 76787 (7/13/20)
Alfred McDonald, PO Box 779, Thornville, TX 76787 (12/27/21)
Alma Foss, 411 Avila Lane, Bago, TX 76608 (6/1/22)

Present Owner(s): Alfred McDonald, PO Box 779, Thornville, TX 76787 (12/1/22)

Certificate Originally Issued: 7/24/2020 Re-Issue: 3/12/2022

The above pedigree is on record in the office of the American Dorper Sheep Breeders' Society.

Ronda Seversen
ADSS Registrar

RAM American Dorper Sheep Breeders' Society **RAM**

REGISTRATION CERTIFICATE

Flock Name and Number	Registration Number	Permanent ID (if any)	Color Type
M Bar W Ranch 917	EP144069		White Dorper

Birth Date	Type of Birth	Service	Embryo	Inspection Type	Percentage
3/3/2022	Twin	Natural Intermation	Not Applicable		Fullblood

SIRE:

Back	Side
Yanna Lay 31380 EP1000235	Yanna Lay 31390 EP1073606
Yanna Lay 31380 EP1000235	Yanna Lay 31390 EP1073606
Yanna Lay 31380 EP1000235	Yanna Lay 31390 EP1073606
Yanna Lay 31380 EP1000235	Yanna Lay 31390 EP1073606

DAM:

Back	Side
Yanna Lay 31380 EP1000235	Yanna Lay 31390 EP1073606
Yanna Lay 31380 EP1000235	Yanna Lay 31390 EP1073606
Yanna Lay 31380 EP1000235	Yanna Lay 31390 EP1073606
Yanna Lay 31380 EP1000235	Yanna Lay 31390 EP1073606

Breeder: Alfred McDonald, PO Box 779, Thornville, TX 76787

Previous Owner(s):

Present Owner(s): Alfred McDonald, PO Box 779, Thornville, TX 76787

Certificate Originally Issued: 7/24/2020 Re-Issue: 3/12/2022

The above pedigree is on record in the office of the American Dorper Sheep Breeders' Society.

Ronda Seversen
ADSS Registrar

Annabelle's Story

Production ewe M Bar W Ranch 2007 was born on May 20, 2020. This is her first time to lamb. In November 2021 I bred her to my ram "Grambo" (M Bar W Ranch 917), and on April 3, 2022 she delivered twins a ram and a ewe with no help.

The ram lamb weighed 9 pounds 9 ounces. The ewe lamb weighed 7 pounds 8 ounces. At birth they were given a dose of Doc Probiotics. On April 5th we docked their tails, gave them ear tags and their CD&T shot. The production ewe was also given her annual shot at this time.

Annabelle was a show sheep in 2020-2021 and 2021-2022. She was raised on High Noon Texas Extreme feed as a lamb, and then moved to High Noon Charmasson feed during her last show season. When she was done showing she was put into the big herd and moved to pasture only to get ready lamb in the spring of 2022. I will be showing her this year as an aged ewe as well as her two lambs.

Annabelle has been a good mom, and Bonnie & Clyde have been growing very good. They have been very healthy too, and are on High Noon Creep Feed.

Baby Time



Getting the sheep ready for the show

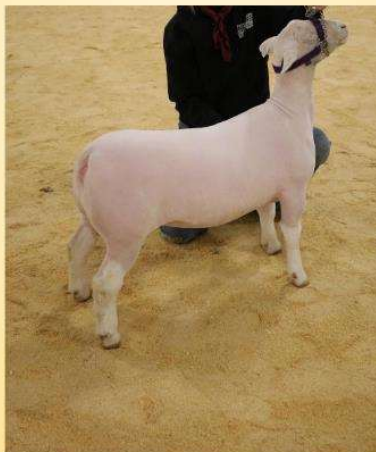


Showtime for Annabelle

*“Chisholm Trail
Showdown” 2021*



*“The National”
2022*



*Ft Worth Flock
2022*

