

POWERS' PICKS \$15

Volume 7 Issue 16

October 31-November 4, 2019

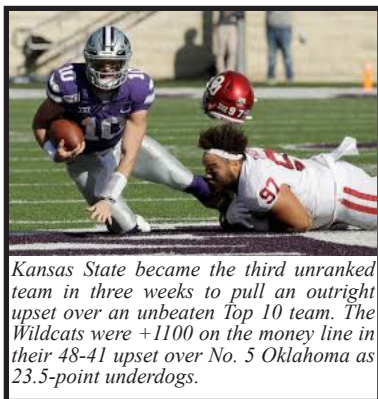
© 2019 BP Sports, LLC

NFL Best Bets 11-7 last 6 Weeks! Amazing 60% All-Time!
Week 10 CFB Best Bets Pg 3, Week 9 NFL Best Bets Pg 7

Week 9 News and Notes!

For those of you that are new, in this section we'll recap what happened last week specifically, the misleading finals, the key injuries, the bad beats and the line moves. We'll include most of these recaps here, therefore you don't have to waste time reading about them in my game-by-game write-ups for the upcoming week. Without further adieu, here's a run down of what happened last week in the world of CFB.

	Week 9 Trends
	Favorites-Dogs
Straight Up	41-17
ATS	31-26-1
	Home-Away
Straight Up	36-22
ATS	36-21-1
	Totals (O/U)
Over-Under	29-28-1
	Year-To-Date
	Favorites-Dogs
Straight Up	452-113
ATS	287-267-11
	Home-Away
Straight Up	381-380
ATS	276-274-11
	Totals (O/U)
Over-Under	268-294-9



Kansas State became the third unranked team in three weeks to pull an outright upset over an unbeaten Top 10 team. The Wildcats were +1100 on the money line in their 48-41 upset over No. 5 Oklahoma as 23.5-point underdogs.

Largest Favorites to Cover:

Clemson (-35) vs. Boston College, 59-7
 Alabama (-32) vs. Arkansas, 48-7
 Western Michigan (-27) vs. Bowling Green, 49-10
 Northern Illinois (-22) vs. Akron, 49-9
 Utah (-21) vs. California, 35-0

Biggest Money line Upsets:

Kansas State +1100 won 48-41 vs. Oklahoma as 23.5-point underdogs.
 Colorado State +450 won 41-31 at Fresno State as 14-point underdogs.
 Oklahoma State +320 won 34-27 at Iowa State, 34-27 as 11-point underdogs.
 Kentucky +300 won 29-7 vs. Missouri as 9.5-point underdogs.
 San Jose State +300 won 34-29 at Army as 9.5-point underdogs.
 Illinois +280 won 24-6 at Purdue as 9.5-point underdogs.
 Rutgers +260 won 44-34 vs. Liberty as 7.5-point underdogs.

ATS Notables in 2019

Best ATS Margins Per Game:

Ohio State +17.4 ppg (7-1 ATS)
 Navy +13.5 ppg (5-2 ATS)
 Penn St +10.3 ppg (5-3 ATS)
 UL-Lafayette +10.2 ppg (6-1 ATS)
 Kansas St +9.4 ppg (5-2 ATS)
 Air Force +9.2 ppg (5-3 ATS)

Worst ATS Margins Per Game:

Nevada -13.0 ppg (3-5 ATS)
 Akron -12.1 ppg (0-8 ATS)
 Virginia Tech -8.9 ppg (2-5 ATS)
 Nebraska -8.6 ppg (1-7 ATS)
 NC State -7.6 ppg (2-4-1 ATS)
 Mississippi St -7.4 ppg (2-6 ATS)

Auburn is also 7-1 ATS (+6.8 ppg) while Appalachian St is 6-1 ATS (+6.3 ppg). On the other side, Vanderbilt is 1-6 ATS (-6.2 ppg) and Georgia Tech is 1-5-1 ATS (-3.3 ppg).

SMU games are 7-1 to the OVER (+7.9 ppg) while Central Michigan games are 7-2 (+4.9 ppg). On the other side, San Diego St (-9.4 ppg), South Alabama (-7.9 ppg) and California (-7.3 ppg) are all 7-1 to the UNDER.

Misleading Finals

Houston had a 510-385 yard edge but were -2 in TO's in a 34-31 loss to SMU. The Mustangs took advantage of Houston's three turnovers, converting them into 14 points.

Texas A&M only had 24-22 first down and 441-433 yard edges but were +3 in TO's (Miss St's 3 TO's all led to A&M TD's). The Aggies won 49-30.

WKU had 25-20 first down and 426-401 yard edges but were -3 in TO's in a 26-23 loss at Marshall. Two WKU TO's led to two Marshall TD's in the first quarter and Marshall needed a 53-yard FG on the final play to win it!

Arizona had 29-26 first down and 495-472 yard edges including 222-150 on the ground but were -2 in TO's in a 41-31 loss at Stanford.

Iowa St had 30-14 first down and 468-402 yard edges but were -2 in TO's in a 34-27 upset loss at home to Oklahoma St. The winning TD was a 26-yard interception return by OSU with 6:47 left.

Pittsburgh had 16-12 first down and 322-208 yard edges including 176-54 on the ground but were -2 in TO's in a 16-12 loss to Miami, FL.

Bad Beat

Instead of taking a knee, **Southern Miss** got a 38-yard TD run with :32 left to beat Rice 20-6. Southern Miss was a 10-point favorite and covered by 4 points.

Major Injuries

Arkansas QB Ben Hicks (shoulder) is questionable vs Mississippi State.
 Boise St QB Hank Bachmeier (hip) is questionable vs San Jose State this week.
 BYU QB Jarren Hall has been upgraded to probable vs BYU this week.
 Florida DL Jabari Zuniga, WR Kadarius Toney and LB Jonathan Greenard have all been upgraded to probable for this week's game vs Georgia.
 FAU QB Chris Robison (shoulder) is questionable for this week's game vs WKU.
 Maryland QB Tyrell Pigrome (leg) questionable for this week's game vs Michigan.
 Miami, FL QB's N'Kosi Perry and Jarren Williams are questionable vs Florida St.
 Nebraska QB's Adrian Martinez (knee) and Noah Vedral are both ? vs Purdue.
 Northern Illinois QB Ross Bowers (concussion) is ? vs Central Michigan.
 Notre Dame OL Tommy Kraemer (MCL) is out indefinitely.
 SMU WR Reggie Roberson (lower body) is questionable vs Memphis.
 UCLA QB Dorian Thompson-Robinson (leg) is questionable vs Colorado.
 Utah QB Tyler Huntley (leg) is probable vs Washington.
 Virginia QB Bryce Perkins (knee) is probable vs North Carolina.
 Virginia Tech QB Hendon Hooker (knee) has been upgraded to probable vs ND.
 Wake Forest QB Jamie Newman (shoulder) is questionable vs NC State.

Recapping Last Week's Best Bets

We don't sugar coat things here at BP Sports. We had a lousy ass weekend last week. First, Purdue's pass attack was grounded by a monsoon we didn't see predicted when we released them on Wednesday (VIP customers got the UNDER). Michigan did dominate Notre Dame and Washington State almost pulled the outright upset over Oregon (that's 10 straight covers for Wazzu in the series). Both Virginia and Arizona St "no-showed" as small road favorites. The NFL selections had a rare losing week as we actually went "O-fer" on these pages. All of them came up short of the number by a combined 10 points, but none of them were bad beats. As we head into November, we really need to pick it up as far as the colleges go. It's been a disappointing season for many (see newsletters below), but we still have 5 weeks remaining in the regular season to finish strong (we usually fare very well in the bowls). As you can see from the below standings, Sports Reporter is having a very fine season and the Sunday Night Owl report for us is 18-9-1 the last 7 weeks. However, everyone else has been struggling.

2019 Nationwide Football Newsletter Contest (Regular Season Only)

We are happy to provide you with the records, standings and plays used from the Power Sweep (3★, 4★ & Underdog), Gold Sheet (Key Releases), Power Plays (4.5★ for College 4★ for NFL), Sports Reporter (Best & Super Bets), Winning Points (Best Bets & Preferred), Playbook (3-5★'s), Pointwise (Ratings 1-4), Powers' Picks (1-4★'s) and the Sunday Night Owl Report (1-4★'s).

College					NFL					College/NFL Combined							
Newsletter	W	L	T	Net	Newsletter	W	L	T	Net	Newsletter	W	L	T	Net			
Sports Reporter	20	12	1	62.50%	8	Night Owl	7	1	0	87.50%	6	Sports Reporter	31	18	1	63.27%	13
Playbook	14	12	1	53.85%	2	Power Plays	6	2	0	75.00%	4	Night Owl	20	16	1	55.56%	4
Powers' Picks	21	21	2	50.00%	0	Sports Reporter	11	6	0	64.71%	5	Powers' Picks	35	31	2	53.03%	4
Power Sweep	18	18	0	50.00%	0	Pointwise	14	9	1	60.87%	5	Power Plays	12	11	0	52.17%	1
Night Owl	13	15	1	46.43%	-2	Powers' Picks	14	10	0	58.33%	4	Playbook	25	25	1	50.00%	0
Gold Sheet	15	21	0	41.67%	-6	Gold Sheet	13	10	1	56.52%	3	Power Sweep	26	26	0	50.00%	0
Power Plays	6	9	0	40.00%	-3	Winning Points	16	15	1	51.61%	1	Gold Sheet	28	31	1	47.46%	-3
Pointwise	21	32	1	39.62%	-11	Power Sweep	8	8	0	50.00%	0	Pointwise	35	41	2	46.05%	-6
Winning Points	20	34	0	37.04%	-14	Playbook	11	13	0	45.83%	-2	Winning Points	36	49	1	42.35%	-13
Combined	148	174	6	45.96%	-26	Combined	100	74	3	57.47%	26	Combined	248	248	9	50.00%	0

CFB and NFL Schedules with Vegas and Brad Powers Lines Week 10 Oct 31st-Nov 4th

NFL/CFB Thursday, Oct 31st	Line	BP			Saturday, November 2nd	Line	BP		
301 SAN FRANCISCO 8:20 p.m. FOX	-10	-9			373 TCU 3:30 p.m.	59	60		
302 ARIZONA	43	43			374 OKLAHOMA ST	-3	-6		
303 GEORGIA SOUTHERN 8:00 p.m. ESPN	44.5	44			375 UTEP 3:30 p.m. NFL Network	59.5	57		
304 APPALACHIAN ST	-15	-18			376 NORTH TEXAS	-23	-23		
305 WEST VIRGINIA 8:00 p.m. ESPN	55.5	54			377 TULSA 4:00 p.m. ESPN2	60	58		
306 BAYLOR	-18	-18			378 TULANE	-10.5	-10		
Friday, November 1st	Line	BP			379 MISSISSIPPI ST 4:00 p.m. SEC Network	-7.5	-7		
307 NAVY 8:00 p.m. ESPN2	-27	-24			380 ARKANSAS	58.5	55		
308 CONNECTICUT	55	56			381 MIDDLE TENNESSEE	-3	-2		
Saturday, November 2nd	Line	BP			382 CHARLOTTE	65	64		
309 NC STATE 12:00 p.m. ESPN	60.5	60			383 FLORIDA ATLANTIC	50	50		
310 WAKE FOREST	-7.5	-6			384 WKU	-1	-4		
311 LIBERTY 12:00 p.m.	-23	-21			385 ARKANSAS ST 3:30 p.m. ESPN	-2	-3		
312 MASSACHUSETTS	70	67			386 UL-MONROE	67.5	65		
313 OLD DOMINION 12:00 p.m.	49	49			387 MIAMI, FL 3:30 p.m. ABC	47	49		
314 FIU	-17	-17			388 FLORIDA ST	-3.5	-5		
315 TROY 3:00 p.m.	-1	61			389 NEW MEXICO 10:30 p.m. ESPN	58.5	60		
316 COASTAL CAROLINA	60.5	-1			390 NEVADA	-3.5	-6		
317 PITTSBURGH 4:00 p.m. ACC Network	-7.5	-9			391 UTAH 3:30 p.m. FOX	-3.5	47		
318 GEORGIA TECH	42.5	45			392 WASHINGTON	47.5	-1		
319 NEBRASKA 12:00 p.m. FOX	-3	-1			393 BOISE ST 10:30 p.m. CBS College	-17	-17		
320 PURDUE	58	59			394 SAN JOSE ST	59.5	59		
321 HOUSTON 12:00 p.m. ESPN2	71	66			395 FRESNO ST 12:00 a.m.	69.5			
322 CENTRAL FLORIDA	-22	-24			396 HAWAII	-2	-3		
323 MICHIGAN 12:00 p.m. ABC	-21	-21			197 NORTH TEXAS 3:30 p.m.	-4	-3		
324 MARYLAND	56	55			198 CHARLOTTE	63.5	65		
325 NORTHWESTERN 7:00 p.m. FOX Sports 1	43.5	44			NFL Wk 9 Sunday, November 3rd	Line	BP		
326 INDIANA	-11.5	-10			451 HOUSTON 9:30 a.m. @London, England NFL Network	-1.5	46		
327 AKRON 2:00 p.m.	49.5	48			452 JACKSONVILLE	46.5	-2		
328 BOWLING GREEN	-6	-8			453 WASHINGTON 1:00 p.m. FOX	37	38		
329 RUTGERS 3:30 p.m. Big Ten	50.5	52			454 BUFFALO	-9.5	-10		
330 ILLINOIS	-20.5	-20			455 TENNESSEE 1:00 p.m. CBS	41.5	42		
331 CINCINNATI 7:00 p.m. CBS College	-23.5	-20			456 CAROLINA	-3.5	-6		
332 EAST CAROLINA	46.5	52			457 CHICAGO 1:00 p.m. FOX	42.5	42		
333 BOSTON COLLEGE 12:00 p.m. ACC Network	60	59			458 PHIALDELPHIA	-4.5	-8		
334 SYRACUSE	-3	-1			459 MINNESOTA 1:00 p.m. FOX	NL	-3		
335 BUFFALO 12:00 p.m. ESPN	50	54			460 KANSAS CITY	NL	43		
336 EASTERN MICHIGAN	PK	-2			461 N.Y. JETS 1:00 p.m. CBS	-3	-4		
337 VIRGINIA 7:30 p.m. ACC Network	47	51			462 MIAMI	40.5	40		
338 NORTH CAROLINA	-2.5	-1			463 INDIANAPOLIS 1:00 p.m. CBS	-1	41		
339 BYU 10:00 p.m. ESPN	50.5	-1			464 PITTSBURGH	43	-1		
340 UTAH ST	-3.5	53			465 DETROIT 4:05 p.m. FOX	50.5	50		
341 VIRGINIA TECH 2:30 p.m. NBC	57.5	56			466 OAKLAND	-2	-2		
342 NOTRE DAME	-17.5	-14			467 TAMPA BAY 4:05 p.m. CBS	51	51		
343 OREGON 8:00 p.m. FOX	-4.5	-3			468 SEATTLE	-6	-3		
344 USC	62	63			469 CLEVELAND 4:25 p.m. CBS	-3	-3		
345 COLORADO 9:00 p.m. Pac-12	64.5	64			470 DENVER	39	37		
346 UCLA	-6.5	-6			471 GREEN BAY 4:25 p.m. CBS	-3.5	-4		
347 KANSAS ST 3:30 p.m. FOX Sports 1	-6	-3			472 L.A. CHARGERS	48	48		
348 KANSAS	55	57			473 NEW ENGLAND 8:20 p.m. NBC	-3.5	-3		
349 TEXAS ST	55.5	55			474 BALTIMORE	45	45		
350 UL-LAFAYETTE	-22.5	-21			Monday, November 4th	Line	BP		
351 VANDERBILT 7:30 p.m. SEC Network	51	53			475 DALLAS 8:15 p.m. ESPN	-7	-8		
352 SOUTH CAROLINA	-15	-17			476 N.Y. GIANTS	48	48		
353 NORTHERN ILLINOIS 12:00 p.m. CBS College	-1.5	53							
354 CENTRAL MICHIGAN	50.5	-1							
355 MARSHALL	-10.5	-10							
356 RICE 3:30 p.m.	47	44							
357 UNLV 3:30 p.m.	65	61							
358 COLORADO ST	-9	-7							
359 SMU 7:30 p.m. ABC	72	71							
360 MEMPHIS	-5.5	-5							
361 UTSA 12:00 p.m. SEC Network	53.5	58							
362 TEXAS A&M	-38	-38							
363 ARMY 3:30 p.m. CBS College	45	44							
364 AIR FORCE	-14.5	-16							
365 OREGON ST 4:30 p.m. Pac-12	72	70							
366 ARIZONA	-5.5	-4							
367 UAB 7:00 p.m. ESPN	48	47							
368 TENNESSEE	-11.5	-13							
369 OLE MISS 7:00 p.m. ESPN	52.5	52							
370 AUBURN	-19	-18							
371 GEORGIA 3:30 p.m. CBS	-6.5	-4							
372 FLORIDA	44.5	46							

4★ = BEST 3★ = BETTER 2★ = GOOD 1★ = FAIR	THE POWERS' PACK 3★ Byu (+3.5) over UTAH ST 3★ WASHINGTON (+3.5) over Utah 2★ Virginia Tech (+17.5) over NOTRE DAME 2★ WESTERN KENTUCKY (-1) over Florida Atlantic 2★ KANSAS (+6) over Kansas St
--	---

Games in Rotation Order

HOME TEAM IN CAPS

Thursday, October 31st

APPALACHIAN ST 31 Georgia Southern 13. App St has revenge for losing 34-14 at Georgia Southern as 10-point favorites last year in a game where QB Zac Thomas got hurt (backups threw 4 INT's). Both teams come in off blowout wins but Georgia Southern is up against it, traveling on a short week. We lean with the home team here and our power ratings are strong on App St (see page 6).

BAYLOR 36 West Virginia 18. Baylor has revenge for an embarrassing 58-14 loss to West Virginia last year. While West Virginia has played the tougher schedule (No. 8 in vs No. 73 in Sagarin's ratings), Baylor is +2.4 yards per play (No. 9) while West Virginia is -1.0 (No. 111). West Virginia is also just 3-14-1 ATS as an underdog since the middle of 2015. Still, this line is a bit pricey for our liking.

Friday, November 1st

Navy 40 CONNECTICUT 16. This is the largest away favorite role for Navy in 40 years. In fact, Navy's only been a 3-TD favorite one time in that span (-21 at Temple in 2007, didn't cover). Last week Navy led Tulane 24-0 in the 1H and 31-14 at halftime but needed a 48-yard FG on the final play of the game for the win. Navy has doubled its win total from 2018, when it went 3-10 and endured its worst season since 2002. They're also +13.5 ppg vs the spread this year (2nd best in the country behind Ohio St). On the other side, UConn is off a 3-TD win over lowly UMass. RB Kevin Mensah ran for 164 yards and a career-high five TD's. We lean with the home dog here catching a huge number (just covered getting 21.5 at home vs Houston).

Saturday, November 2nd

WAKE FOREST 33 NC State 27. Both teams come in off a bye. Devin Leary has been named the starter here for NC State. Stats wise both teams are +0.4 in yards per play differential, which we feel doesn't warrant a spread of more than a TD here. Also we feel Wake is a bit overrated because the Demon Deacons are 4-1 in games decided by 6 points or less this season. We lean with the Wolf Pack.

Liberty 44 MASSACHUSETTS 23. While they're only in year 2, Liberty has never laid double-digits vs a FBS team and yet the Flames are 23-point favorites at UMass this week. Liberty couldn't handle a unique favorite role last week losing outright as a TD favorite on the road vs Big Ten Rutgers. Meanwhile, UMass is the worst team we've ever power-rated on these pages. It didn't get any better last week losing to a pitiful UConn team by 21 at home. Still, this is a huge line.

FIU 33 Old Dominion 16. ODU has lost 7 straight games since the opener and they are No. 130 in the country in total offense (237.8 ypg). They're also No. 127 in yards per play differential (-1.8). On the other side, FIU comes in off a surprising blowout loss at Middle Tennessee (FIU was -1) as MT outscored FIU 36-0 in the second half of a 50-17 win. FIU should get back on track here.

COASTAL CAROLINA 31 Troy 30. We think Troy is only favored here because of their past reputation. Coastal Carolina has played the slightly tougher schedule (No. 115 vs No. 123 in Sagarin's SOS) and Coastal is +0.6 yards per play (No. 49) while Troy is +0.0 (No. 78). Coastal also comes in off a bye while Troy was run over at Georgia St (allowed 390 rushing yards in a 52-33 loss).

Pittsburgh 27 GEORGIA TECH 18. These two teams last games (both against Miami, FL) might be giving us some slight value here. First, Pittsburgh had 16-12 first down and 322-208 yard edges including 176-54 on the ground but were -2 in TO's in a 16-12 loss to Miami, FL. Meanwhile, Miami missed 3 short FG's, GT faked a punt for a TD and GT also got a fumble recovery in the end zone for a TD in their misleading upset win over Miami. Lean Pitt.

NEBRASKA 30 Purdue 29. Obviously, we had an embarrassing loser on these pages last week with Purdue. Purdue had 17-14 first down and 271-268 yard edges but were out-rushed 242-135 and were also -2 in TO's (directly led to 14 Illinois points). Purdue QB's struggled in the rain combining to go 15 of 33 for 136 yards and 1-1 ratio. That rainy forecast wasn't well-known until the day before and the total didn't drop much until hours before kickoff. On the other side, Nebraska came up short again as they are now 1-7 ATS this season after a 38-31 home loss to Indiana. Both of Nebraska's TO's led to Indiana TD's.

CENTRAL FLORIDA 45 Houston 21. Last week, Houston nearly ended SMU's unbeaten season. Houston had a 510-385 yard edge but were -2 in TO's in a 34-31 loss. The Mustangs took advantage of Houston's three

turnovers, converting them into 14 points. On the other side, UCF mauled Temple 63-21. UCF had 24-12 first down and 614-266 yard edges including 385-45 on the ground. UCF led 28-21 at halftime before they outscored the Owls 35-0 in the second half. UCF is No. 6 in yards per play differential (+2.8) while Houston is No. 91 (-0.4). We lean with the home team here.

Michigan 38 MARYLAND 17. Obviously, the Wolverines should be feeling very good about themselves after a blowout win over Notre Dame last week (we cashed a 3★ on these pages on them). Michigan had 23-12 first down and 437-180 yard edges including 303-47 on the ground. After allowing 359 rushing yards to Wisconsin, Michigan has allowed just 259 rushing yards in their last 5 games! On the other side, Maryland was run over by Minnesota 52-10. Minnesota had 30-10 first down and 498-210 yard edges including 321-79 on the ground. Maryland has looked lifeless since their 2-0 start where they outscored Howard and Syracuse 142-20. Since then, the Terps have been out-scored 35.3-19.5 (-162 ypg). Michigan head coach Jim Harbaugh is 4-0 SU (+32.5 ppg) and 4-0 ATS (+12.9 ppg) vs Maryland. However, a lot of the value on Michigan was taken away in the market place yesterday as the line climbed 3 points.

INDIANA 27 Northwestern 17. After last week's win over Nebraska clinched bowl eligibility for Indiana, head coach Tom Allen said, "It feels pretty stinking good to stand here and answer your questions after a big-time road win," Allen told reporters. "This is a big-time win. It changes a lot for our program." We feel the Hoosiers could be in store for a bit of a let down here. Yes, Northwestern has lost 5 straight games, but they've played the toughest schedule in the country to date (according to Jeff Sagarin). Also note that since 2008, Northwestern is 12-2 ATS as a double-digit road underdog with an average cover of 12 ppg. The Wildcats actually have a winning record straight up going 8-6.

BOWLING GREEN 28 Akron 20. Two of the bottom 3 teams in the country face off here. Bowling Green has shown some life this season with a pair of wins but the Falcons are notably 4-18 ATS at home since the end of the 2015 season. However, Akron is the only team in the country that has failed to cover a spread this season (0-8 ATS) failing to meet expectations by 12.1 ppg. The Zips have scored a combined 3 points in their last 3 games and in their last 2 games have seen their opponents score 4 non-offensive TD's. Akron is remarkably -29 in sack differential this season (sacks by minus sacks versus). We lean with the home team here.

ILLINOIS 36 Rutgers 16. Obviously, Illinois kicked our butts on these pages last week as they beat Purdue 24-6 in the rain. Illinois QB's combined for only 7 passes because they were so effective on the ground (242 rush yards). Meanwhile, Rutgers upset Liberty 44-34 last week as TD home underdogs. "I saw that they were favored to win, which I thought was ridiculous," Rutgers QB Langan said. Langan had the first 100-yard rushing game for a Rutgers quarterback since Sam Mudie had 105 yards in 1961. Illinois is 2-8 ATS laying 17 or more points in Big 10 play since 1990 and this is their largest Big 10 favorite role since 2010. Pass.

Cincinnati 36 EAST CAROLINA 16. Cincinnati comes in fresh off a bye. Meanwhile, East Carolina was embarrassed at home by a mediocre South Florida team last week. USF had 27-22 first down and 525-324 yard edges including 347-102 on the ground. USF averaged 8.7 yards per carry and led 35-7 late 2Q. Even with that considered, this line looks pretty steep. It's Cincy's largest favorite role vs an FBS opponent in 4 years. We lean with the home dog here.

SYRACUSE 30 Boston College 29. Syracuse has one of the worst offensive lines in college football as they've remarkably allowed 42 sacks already this season. Their 35-17 loss at Florida State last week was worse than the final as they actually trailed 35-3 entering the 4Q. Meanwhile, BC was crushed by Clemson. "They played like the No. 1 team in the country," Boston College coach Steve Addazio said. "They played like the team that went after Alabama in the national championship. That's what happened out there." We lean with BC here but their pass rush is non-existent with only 8 sacks this season.

EASTERN MICHIGAN 28 Buffalo 26. Last week EMU nearly rallied from a 31-10 deficit in the 3Q at Toledo as EMU actually missed a 33-yard FG with 1:03 left that would've given them the lead (ended up losing in OT). On the other side, CMU was blown out at Buffalo 43-20. The Bulls were +4 in TO's and scored 24 points off CMU's TO's. We lean with the OVER here.

NORTH CAROLINA 26 Virginia 25. We had a disappointing loser with Virginia on these pages last week. Louisville had a 360-311 yard edge including 227-78 on the ground but were also +2 in TO's. On the other side, it was another close-call win (20-17 over Duke) for a UNC team that has played seven games decided by six or fewer points, with each being decided in the final 80 seconds. Both teams had 22 first downs but North Carolina was the more explosive team with a 432-329 yard edge (6.1-4.1 yards per play edge). Another down-to-the-wire North Carolina game.

Follow Brad on Twitter: @BradPowers7

3★ BYU 27 Utah St 26. BYU has played the much tougher schedule so far (No. 7 vs No. 57 in Sagarin's ratings). Also BYU is coming off a much needed bye after already playing Utah, Tennessee, USC, Washington, at Toledo, at South Florida and Boise St. On the other side, Utah St lost by 24 to Air Force last week and it should've been by 40 points! The Aggies' defense was on the field for more than 45 minutes! We think "big brother" will be feeling disrespected here. BYU in 33 meetings vs Utah St since 1980 has been the underdog only one other time...in 2013 when they won outright 31-14. Utah St's QB Jordan Love (8-9 ratio this year) is clearly not the same player under new head coach Gary Andersen (32-6 ratio last year) and finally BYU is 21-6 ATS as a road dog since 2010.

2★ Va Tech (plus the points) NOTRE DAME 35 Virginia Tech 21. After last week's blowout loss at Michigan (we easily cashed a 3★ on Michigan on these pages), what does ND have to play for? No conference championship, no playoff bid. Remember, ND has struggled with nothing to play for in November going 6-15 ATS the last 5 years (-5.7 ppg) and 3-14 ATS taking out last year when they were unbeaten and were still shooting for a playoff bid. Their opponent VT comes in fresh off a bye, feeling confident after 3 straight wins. We like the Hokies here.

Oregon 33 USC 30. Oregon's defense has been exposed the last couple of weeks (allowed 31 and 35 points to Washington and Washington St) and were extremely fortunate to win both games. Remember, the Ducks' defense had allowed just 25 total points in the previous 5 games but faced mediocre competition. Last week we cashed on these pages with Washington State as they nearly pulled the big upset over Oregon. Oregon was +2 in TO's. One of Washington St's TO's was an interception in the end zone and the other was returned 19 yards for a TD. On the other side, USC still controls their own destiny in Pac-12 South. USC is 23-3 SU at home under Helton (+2.5 ATS ppg) and we think this one goes down to the wire.

UCLA 35 Colorado 29. Last week UCLA had a 27-18 first down edge but only a 393-383 yard edge in their 42-32 win over Arizona St (much to our dismay on these pages). The Bruins did out-gain ASU 217-116 on the ground and won despite being -2 in TO's. Remember, UCLA led 42-10 entering the 4Q but got out-scored 22-0 in the 4Q. UCLA RB Joshua Kelly ran for 164 yards and 4 TD's. On the other side, USC rallied from a 31-21 4Q deficit outscoring Colorado 14-0 in the final stanza. The stats were pretty even as USC had a 30-25 first down edge but Colorado a 520-518 yard edge. We don't see too much value here. Note UCLA quarterback Dorian Thompson-Robinson participated in Monday's practice with a brace on his left knee. He hurt his knee early in the 4Q vs Arizona St last week. He is questionable for this game.

2★ Kansas (plus the points) Kansas St 30 KANSAS 27. Obviously, Kansas St comes in off the big upset win over Oklahoma last week. Kansas St had a 24-18 first down edge and out-rushed OU 213-102. There were wild swings in the game as OU was leading Kansas St 17-7 after the 1Q and also scored the game's final 18 points. In between, Kansas St out-scored OU 41-6! OU recovered an onside kick with less than 2 minutes left but it was over-turned after a lengthy replay. It was the first home victory for the Wildcats over Oklahoma since 1996, and just their fourth win ever over a top-five team. On the other side, Kansas had a 527-483 yard edge in a upset over Texas Tech. In a crazy final sequence, Texas Tech blocked a 40-yard Kansas FG only to recover it and fumble it back to Kansas. That set up the Jayhawks for another attempt and this time they made a 32-yarder on the final play of the game. The switch at offensive coordinator to Brent Dearmon appears to be paying off for previously-struggling offense. Kansas is +0.3 in yards per play differential (No. 63) while Kansas St is -0.8 (No. 106). We like the home dog.

UL-LAFAYETTE 38 Texas St 17. ULL comes in off a bye. The Ragin Cajuns are 6-1 ATS this season +10.2 ppg. Meanwhile, Texas St is off a 38-14 loss to Arkansas St last week as Arkansas St out-scored Texas St 21-0 in the 2H. ULL is No. 14 in the country in yards per play differential (+2.0) while Texas St is No. 108 (-0.8). However, we don't see too much value here.

SOUTH CAROLINA 35 Vanderbilt 18. South Carolina has beat Vanderbilt 10 straight times (+10.6 ppg) but the Gamecocks are only 5-4-1 ATS. Last week South Carolina actually led Tennessee 21-17 at halftime before getting outscored 24-0 in the second half. It was a very damaging loss to SC's bowl hopes. Note that Tennessee got a 65-yard punt return TD and a 29-yard blocked punt TD. On the other side, Vanderbilt comes in a fresh off a bye after an upset win over Missouri. We lean with the home team here as SC is No. 76 in yards per play despite playing a tougher schedule while Vanderbilt is No. 125 (-1.7 ypp).

CENTRAL MICHIGAN 27 Northern Illinois 26. We feel NIU is only favored here because of past reputation. CMU is +0.5 ypp while NIU is -0.2. Last week NIU had 21-7 first down and 345-145 yard edges including 274-94 on the ground. in a 49-0 win over hapless Akron (NIU did score 2 non-offensive TD's). Meanwhile, CMU was blown out at Buffalo but note the Bulls were +4 in TO's and scored 24 points off CMU's TO's.

Marshall 27 RICE 17. The wise guys love this Rice team despite their 0-8 record as the Owls take money in the market place seemingly every week. Last week, Rice backers were dealt a bad beat. Instead of taking a knee, Southern Miss got a 38-yard TD run with :32 left to beat Rice 20-6. Southern Miss was a 10-point favorite and covered by 4 points. On the other side, two WKU TO's led to two Marshall TD's in the first quarter and Marshall needed a 53-yard FG on the final play to beat WKU. We don't see too much value in this one.

COLORADO ST 34 UNLV 27. We lean with the road dog here. Last week UNLV nearly pulled an outright upset over San Diego St. The first downs were even at 18-18 and UNLV had a 376-335 yard edge. UNLV missed a 42-yard FG with :38 left that would've tied it. On the other side, Colorado St did pull the outright upset over Fresno St as 2-TD underdogs. Colorado St had 25-17 first down and 500-388 yard edges. We like what we're seeing from UNLV QB Kenyon Oblad who was 21 of 39 for 255 yards and 2 TD's.

MEMPHIS 38 Smu 33. ESPN College GameDay makes their first trip to Memphis and that's a big deal for a Group of 5 program. We feel SMU is a little overrated as they are 4-0 in games decided by a TD or less and last week were -125 yards in a 3-point win vs Houston (+2 TO's). Meanwhile, Memphis is 5-0 SU/ATS vs SMU with an average win by 35.2 ppg and an average cover of 21.4 ppg. Also Memphis is No. 12 in yards per play differential (+2.1) while SMU is +0.8 (No. 37). However, this is why Memphis laying more than a FG to an unbeaten team.

TEXAS A&M 48 Utsa 10. UTSA comes in fresh off a bye. Meanwhile, Texas A&M only had 24-22 first down and 441-433 yard edges but were +3 in TO's (Miss St's 3 TO's all led to A&M TD's). The Aggies won 49-30. Normally, we'd say this is a clear flat spot for A&M but they have a bye on deck. We lean OVER.

AIR FORCE 30 Army 14. Air Force is 17-2 SU/13-5-1 ATS hosting Army since 1980 but did lose their last home game to Army 21-0 in 2017. These two teams seem to be heading in opposite directions. Air Force has won and covered 3 games all in blowout fashion vs bowl caliber opponents. Last week Air Force dominated even more than the 31-7 final would indicate. The Falcons had 30-7 first down and 472-128 yard edges including 448-14 on the ground. AF was -2 in TO's both fumbles after long drives in Utah St territory and still easily covered. AF had a 45:43-14:17 TOP edge. Meanwhile, Army has failed to cover in 5 straight games losing 3 consecutive games outright as a favorite. Don't see this one being competitive.

ARIZONA 37 Oregon St 33. After 3 straight losses by double-digits, what's the current vibe of this Arizona team? They just fired their DC Marcel Yates and can't figure out whether or not to bench QB Khalil Tate for frosh Grant Gunnell. On the other side, besides the blowout home loss to Utah, what is Oregon St's bad performance this season? The Beavers have been consistently improved over recent past editions and are fresh off a bye. We lean Oregon St.

TENNESSEE 30 Uab 17. UAB does come in fresh off a bye here but remember the Blazers are a completely different team home and away since returning in 2017. At home, they are 16-0 SU/13-2-1 ATS. On the road, just 8-7 SU but are 9-6 ATS as head coach Bill Clark has done wonders with the program. However, UAB has benefited from playing the weakest schedule in the FBS so far. Now they face a confident Tennessee team off 3 straight covers. We lean with the Vols here.

AUBURN 35 Ole Miss 17. Last week, Auburn got the cover at LSU. LSU had 30-16 first down and 508-287 yard edges but struggled in the red zone. LSU had not previously scored fewer than 36 points in a game and LSU hadn't trailed that late in a game all season but was down 13-10 mid-3Q. Kudos to the Auburn defense for that solid effort. Also Auburn QB Bo Nix looked more prepared to play in a hostile environment than he did at Florida. On the other side, Ole Miss comes in fresh off a bye. Auburn does have a bye on deck. We don't see much value here.

† **Georgia 25 Florida 21.** @Jacksonville, FL. Both teams come in off a bye here. Florida has played the tougher schedule (No. 26 vs No. 62) to date. Do we really know how good Georgia is? That Notre Dame win doesn't look so good now and with that non-covering win in question, what's their other quality win? UGA QB Jake Fromm is struggling (4 picks vs South Carolina and 35 yards vs Kentucky in his last two games). Meanwhile, Florida will see the return of DL Jabari Zuniga, WR Kadarious Toney and LB Jonathan Greenard who have all been upgraded to probable for this game. We like the Gators.

OKLAHOMA ST 33 Tcu 27. Our power ratings are strong on OSU here but the worry is OSU QB Spencer Sanders (only a 13-10 ratio) vs a ball-hawking TCU defense that just intercepted Texas QB Sam Ehlinger 4 times. The week after losing a best bet on Oklahoma St on these pages because of TO's in the 4Q, they win a game because of them (+2 in TO's vs Iowa St). The Cowboys were out-FD'd 30-14 in that game but a interception return TD was the game-winning score. On the other side, has the light bulb come on for TCU with a true frosh QB? Max Duggan played the best game of his career last week vs Texas. Or is there a bit of a letdown here after a storming the field win last week? Lean on OSU.

NORTH TEXAS 40 UTEP 17. Last week La Tech led UTEP 42-7 in the 4Q before the Miners got a couple of garbage TD's. On the other side, North Texas led Charlotte 21-7 at halftime and still led 35-21 entering the 4Q. However, Charlotte got a 34-yard TD with :18 left for the come-from-behind win. NT QB Mason Fine was 26 of 38 for 394 yards and 5 TD's. We don't see much value here. Pass.

TULANE 34 TULSA 24. Despite their 2-6 record, Tulsa is a much improved team this season. Last week Tulsa had 33-21 first down and 584-498 yard edges. However, Tulsa missed a 29-yard FG on the final play that would've gave them the upset over Memphis. On the other side, a FG on the final play also did Tulane in. The Green Wave had rallied from a 24-0 deficit at Navy but the Midshipmen got a 48-yard FG on the final play of the game for the win. Tulane is No. 23 in yards per play differential while Tulane is No. 107. However, Tulane has played the much tougher schedule (No. 11 vs No. 78). We don't see much value here.

Mississippi St 31 ARKANSAS 24. Both of these teams have had disappointing seasons as we've downgraded both at least 6 points (see page 5). Last week Miss St was only out-FD'd 24-22 and out-gained 441-433 but were -3 in TO's (Miss St's 3 TO's all led to A&M TD's). The Aggies won 49-30. On the other side, Arkansas trailed Alabama 41-0 at halftime as the Tide scored 24 points off 4 Arkansas TO's in that half. We don't like either team and we certainly won't lay more than a TD on the road with a Mississippi St team that ranks No. 90 in scoring.

Middle Tennessee 33 CHARLOTTE 31. Last week Middle Tennessee dominated FIU 50-17 (+1) as Middle Tennessee outscored FIU 36-0 in the second half. MT had 496-319 yard edges including 471-89 on the ground. The Blue Raiders were also +4 in TO's. On the other side, Charlotte rallied from a 35-21 4Q deficit and got a 34-yard TD with :18 left to beat North Texas 39-38. Charlotte QB Chris Reynolds was 24 of 32 for 336 yards and 3 TD's. Lean on the home dog.

2★ WESTERN KENTUCKY 27 Florida Atlantic 23. The two teams have played a similar schedule in terms of strength but WKU is +0.2 in yards per play (No. 65) while FAU is -0.3 (No. 88). On top of that, WKU had 25-20 first down and 426-401 yard edges but were -3 in TO's in a 26-23 loss at Marshall last week. Two WKU TO's led to two Marshall TD's in the first quarter and Marshall needed a 53-yard FG on the final play to win it! The Hilltoppers have one of the best defenses as they rank No. 16 in total D and No. 17 in scoring D. They've already pulled two home upsets over UAB and Army and we feel they pull another here. Also note that FAU QB Chris Robison is a little banged up (check status).

Arkansas St 34 UL-MONROE 31. Arkansas St is on a 9-0 SU (+21.4 ppg) and 9-0 ATS (+13.1 ppg) run vs UL-Monroe. Last week the Red Wolves had 21-8 first down and 364-227 yard edges including 206-81 on the ground in a blowout win over Texas St. Meanwhile, ULM comes in off a bye. Tough going against series history here.

FLORIDA ST 27 Miami, FL 22. 15 of the last 18 meetings have been decided by 8 points or less and we think this one will be no different. Miami comes in off a misleading win over Pitt last week (-114 yards). Both QB's Williams and Perry are banged up (check status). Meanwhile, we believe

FSU has the QB edge here with Alex Hornibrook. They are 3-0 with him as a starter beating teams like Syracuse, NC State and Louisville all by double-digits. Note if you're looking to bet FSU games, maybe take a flyer on them in the first half. FSU gets worse as the game progresses: +43 in the 1Q, +7 in the 2Q, -14 in the 3Q and -34 in the 4Q.

NEVADA 33 New Mexico 27. Help us understand this line. We get that Nevada is the worst team in the country in ATS margin -13.0 ppg (3-5 ATS). However, they were just laying 3 at home a couple weeks ago to a San Jose St that is clearly superior to New Mexico (Spartans were 6.5-point home favorites vs New Mexico and won by 11). Last week, New Mexico had a phony final vs Hawaii. Hawaii led 35-3 at halftime but nearly blew the cover in the end. Meanwhile, Nevada went back to QB Strong at QB. We like the Wolf Pack here.

3★ WASHINGTON 24 Utah 23. We feel you're starting to pay a premium this week with Utah in the market. They've won 4 straight by 30.8 ppg and covered 4 straight by 16.9 ppg. However, this is a much taller order here. Remember, Washington head coach Chris Petersen is 18-0 SU (11-7 ATS +4 ppg) off a regular season bye dating back to his Boise St days. The Utes have lost 12 of 13 all-time meetings vs Washington and are now laying more than a FG on the road. We like the Huskies.

Boise St 38 SAN JOSE ST 21. Boise St comes in fresh off a bye after their unbeaten season came crashing down at BYU. Boise St QB Hank Bachmeier (hip) missed that game and is questionable here. On the other side, San Jose St is one of the most improved teams in the country this year. After going just 3-22 SU the last 2 years, they're already 4-4 SU this year and just pulled an outright upset at Army. However, note that Boise St is 37-19-1 ATS as a road favorite since 2008. We don't see much value here until Boise's QB injury situation clears up.

HAWAII 34 Fresno St 31. Last week Hawaii had a 578-500 yard edge and led New Mexico 35-3 at halftime. "That's my fault for pulling the starters too soon," Rolovich said. "I felt like some guys deserved to play. I felt like the game was in our hands. Credit to New Mexico to keep battling. They made some plays and they showed some character to keep battling." Hawaii QB Cole McDonald threw for 237 yards and also ran for 140 yards and 2 TD's. The rout began early as the Lobos went three-and-out, followed by a 76-yard McDonald touchdown run. "That was a great read by him," Rolovich said. "He's got those long levers and he just gobbles up ground." It was a stunning way to start the game, New Mexico coach Bob Davie said. "We got shocked right off the bat," he said. "He runs the zone read on the second play of the game and goes (76) yards. In some ways, the biggest, fastest guy on the field. Wow." On the other side, clearly Fresno St isn't the same team as the past two editions under head coach Jeff Tedford. Last week, they lost outright as 2-TD favorites to Colorado St. We lean with the home team.

BRAD POWERS' ATS STAT OF THE WEEK:
Arkansas St is on a 9-0 SU (+21.4 ppg) and 9-0 ATS (+13.1 ppg) run vs UL-Monroe.

Updated College Football Power Ratings for Week 10

Rank	Team	Pre	10/30	Rank	Team	Pre	10/30	Rank	Team	Pre	10/30	Rank	Team	Pre	10/30	Rank	Team	Pre	10/30	Team	Pts	
1	Ohio State	88.60	101.10	34	Florida State	80.46	75.46	67	Boston College	69.35	67.35	99	Troy	62.23	60.23	101	Arkansas State	64.22	60.22	Ohio State	+12.5	
2	Clemson	99.54	99.53	35	Appalachian State	73.72	75.22	68	San Diego State	67.01	67.01	101	North Texas	61.42	59.92	102	Middle Tennessee	59.30	59.80	Navy	+11.5	
3	LSU	90.95	94.95	36	Air Force	67.85	74.85	69	Colorado	66.74	66.74	102	Colorado State	55.71	58.71	103	Buffalo	57.40	58.40	SMU	+10.5	
4	Alabama	99.90	93.90	37	SMU	64.32	74.82	70	Western Michigan	65.54	66.54	103	Miami (OH)	60.18	58.68	104	Eastern Michigan	58.65	57.65	UL-Lafayette	+10.0	
5	Oklahoma	89.67	92.67	38	Pittsburgh	72.13	74.13	71	Purdue	73.51	66.01	104	Buffalo	57.40	58.40	105	Coastal Carolina	51.73	56.73	Georgia State	+8.5	
6	Georgia	93.01	91.01	39	Memphis	74.53	74.03	72	Hawaii	62.00	66.00	105	Temple	67.03	65.53	106	UL-Monroe	55.41	56.41	Ball State	+7.5	
7	Auburn	86.93	89.42	40	Miami (FL)	79.38	73.88	73	Oregon State	62.93	65.93	106	West Virginia	70.22	65.22	107	San Jose State	51.36	56.36	Air Force	+7.0	
8	Penn State	83.62	88.12	41	North Carolina	69.24	73.74	74	Florida Atlantic	64.74	65.74	107	Kent State	54.28	56.28	108	Tulane	56.36	56.36	Central Mich	+6.0	
9	Oregon	84.43	87.43	42	Mississippi State	83.14	73.64	75	Southern Miss	64.63	65.63	108	Kent State	54.28	56.28	109	Tulane	56.36	56.36	Kansas	+6.0	
10	Wisconsin	81.71	87.20	43	Kansas State	70.58	73.58	76	Temple	67.03	65.53	109	San Jose State	51.36	56.36	110	Tulane	56.36	56.36	Kansas	+6.0	
11	Michigan	89.42	86.42	44	Duke	71.49	73.49	77	West Virginia	70.22	65.22	110	Kent State	54.28	56.28	111	Tulane	56.36	56.36	Tulane	+6.0	
12	Utah	81.68	86.18	44	Ole Miss	72.99	73.49	78	Wyoming	60.68	65.18	111	Central Michigan	49.99	55.99	112	Tulane	56.36	56.36	Northwestern	-6.0	
13	Florida	86.70	85.70	46	Tennessee	79.03	72.53	79	Maryland	66.84	64.84	112	Liberty	54.05	55.55	113	Alabama	-6.0	Alabama	-6.0		
14	Notre Dame	86.31	83.31	47	Arizona State	74.57	72.07	80	Marshall	66.61	64.61	113	Charlotte	53.43	55.43	114	Arkansas	-6.0	Arkansas	-6.0		
15	Texas A&M	84.75	82.25	48	Kentucky	72.99	71.99	81	Illinois	62.56	64.56	114	UNLV	55.67	55.17	115	Bowling Green	-6.0	Bowling Green	-6.0		
16	Washington	82.69	82.19	49	Utah State	69.67	71.17	82	Louisiana Tech	63.92	64.42	115	Nevada	60.86	53.86	116	Army	-6.5	Army	-6.5		
17	Iowa	81.13	82.13	50	Louisville	65.28	70.78	83	Arkansas	69.78	63.78	116	East Carolina	54.87	52.37	117	Tennessee	-6.5	Tennessee	-6.5		
18	UCF	77.31	81.81	51	BYU	74.18	70.68	84	Kansas	57.53	63.53	117	Texas State	53.19	51.69	118	Houston	-6.5	Houston	-6.5		
19	Iowa State	79.87	81.37	52	Virginia Tech	78.98	70.48	85	Western Kentucky	58.74	62.74	118	Rice	45.48	50.48	119	Nevada	-7.0	Nevada	-7.0		
20	Minnesota	78.57	81.07	53	Tulane	64.36	70.36	86	Tulsa	61.08	62.58	119	Rutgers	58.53	48.53	120	Michigan State	-7.5	Michigan State	-7.5		
21	Missouri	81.55	79.05	54	Wake Forest	69.14	70.14	87	Ohio	66.44	62.44	120	New Mexico	51.23	48.23	121	Purdue	-7.5	Purdue	-7.5		
22	Baylor	76.92	78.91	55	Arizona	74.37	69.87	88	Vanderbilt	69.87	62.37	121	New Mexico State	49.72	47.22	122	Vanderbilt	-7.5	Vanderbilt	-7.5		
23	USC	79.14	78.64	56	Nebraska	79.80	69.80	89	Ball State	54.36	61.86	122	UTSA	49.41	46.91	123	UCLA	-8.0	UCLA	-8.0		
24	Washington State	78.78	78.28	57	Navy	58.24	69.74	90	Georgia Tech	66.32	61.82	123	South Alabama	45.54	46.54	124	Syracuse	-8.0	Syracuse	-8.0		
25	Oklahoma State	78.38	77.88	58	Texas Tech	73.64	69.64	91	USF	65.72	61.72	124	Connecticut	43.86	43.86	125	Stanford	-8.5	Stanford	-8.5		
26	Boise State	76.55	77.55	59	UCLA	77.55	69.55	92	Houston	68.11	61.61	125	UTEP	44.53	43.03	126	Virginia Tech	-8.5	Virginia Tech	-8.5		
27	Virginia	77.04	77.04	60	Stanford	77.90	69.40	93	UAB	59.59	61.59	126	Bowling Green	48.34	42.34	127	Mississippi St	-9.5	Mississippi St	-9.5		
28	Michigan State	84.38	76.88	61	UL-Lafayette	59.36	69.36	94	Army	67.90	61.40	127	Akron	48.73	37.73	128	Nebraska	-10.0	Nebraska	-10.0		
29	Texas	81.70	76.70	62	Northwestern	75.03	69.03	95	Northern Illinois	62.03	61.03	128	Massachusetts	44.58	32.08	129	Rutgers	-10.0	Rutgers	-10.0		
30	Indiana	74.19	76.19	63	NC State	72.35	68.85	96	Georgia Southern	61.26	60.76	130	Akron	44.58	32.08	130	Akron	-11.0	Akron	-11.0		
31	TCU	78.18	76.18	64	California	71.79	68.79	97	FIU	65.22	60.72											
32	Cincinnati	74.96	75.96	65	Syracuse	76.36	68.36	98	Georgia State	51.96	60.46											
33	South Carolina	80.26	75.76	66	Fresno State	71.01	67.51	99	Toledo	63.73	60.23											

Week 10 Computer Projected Lines for Every CFB Game

For the past couple of seasons we have posted computer projected lines at pregame.com. Games where there was of difference of more than 3 points saw our computer lines actually beat the Vegas line at a 224-176-10 (56%) clip the last three years. That's pretty solid and actually better than our own handicapping in some seasons. Last week's plays went 5-3 and now the record for this year is 53-44-2. Keep in mind, these computer lines don't take into consideration off-the-field factors like revenge or flat spots. They are basically a power-rating number difference between the two teams that also takes into consideration the home field advantage.

Of the 9 games where our computer is off more than 3 points compared to the Vegas line (highlighted), our favorite team this week to back would be **Washington +3.5**.

The Comp column is the computer projected line and the Diff column is the difference between the Vegas line and the Computer line. "+" numbers in the difference column say back the underdog. "-" numbers in the difference column say back the favorite. Let us know if you have questions.

Thursday, Oct 31st	Line	Comp	Diff	Saturday, Nov 2nd	Line	Diff	Diff
303 Georgia Southern				349 Texas State			
304 Appalachian St	-15	-18.5	-3.5	350 UL-Lafayette	-22.5	-20.7	+1.8
305 West Virginia				351 Vanderbilt			
306 Baylor	-18	-17.4	+0.6	352 South Carolina	-15	-17.6	-2.6
Friday, Nov 1st	Line	Comp	Diff	353 Northern Illinois			
307 Navy				354 Central Michigan	+1.5	+2.3	-0.8
308 Connecticut	+27	+23.4	+3.6	355 Marshall			
Saturday, Nov 2nd	Line	Diff	Diff	356 Rice	+10.5	+11.6	-1.1
309 NC State				357 UNLV			
310 Wake Forest	-7.5	-4.3	+3.2	358 Colorado State	-9	-7.0	+2.0
311 Liberty				359 SMU			
312 Massachusetts	+23.5	+21.0	+2.5	360 Memphis	-5.5	-3.5	+2.0
313 Old Dominion				361 UTSA			
314 FIU	-17	-17.5	-0.5	362 Texas A&M	-38	-39.8	-1.8
315 Troy				363 Army			
316 Coastal Carolina	+1	+1.3	-0.3	364 Air Force	-14.5	-17.7	-3.2
317 Pittsburgh				365 Oregon State			
318 Georgia Tech	+7.5	+8.1	-0.6	366 Arizona	-5.5	-7.7	-2.2
319 Nebraska				367 UAB			
320 Purdue	+3	+0.5	+2.5	368 Tennessee	-11.5	-14.9	-3.4
321 Houston				369 Mississippi			
322 Central Florida	-22	-24.5	-2.5	370 Auburn	-19	-20.9	-1.9
323 Michigan				371 Georgia			
324 Maryland	+21	+18.6	+2.4	372 Florida	+6.5	+5.3	+1.2
325 Northwestern				373 TCU			
326 Indiana	-11.5	-10.4	+1.1	374 Oklahoma State	-3	-6.2	-3.2
327 Akron				375 UTEP			
328 Bowling Green	-6	-7.1	-1.1	376 North Texas	-23	-20.6	+2.4
329 Rutgers				377 Tulsa			
330 Illinois	-20.5	-19.0	+1.5	378 Tulane	-10.5	-10.8	-0.3
331 Cincinnati				379 Mississippi State			
332 East Carolina	+23.5	+20.3	+3.2	380 Arkansas	+7.5	+6.1	+1.4
333 Boston College				381 Middle Tennessee			
334 Syracuse	-3	-4.5	-1.5	382 Charlotte	+3	+1.9	+1.1
335 Buffalo				383 Florida Atlantic			
336 Eastern Michigan PK	-2.3	-2.3		384 W Kentucky	-1	-0.8	+0.2
337 Virginia				385 Arkansas State			
338 North Carolina	-2.5	-0.2	+2.3	386 UL-Monroe	+2	+1.1	+0.9
339 BYU				387 Miami (FL)			
340 Utah State	-3.5	-4.7	-1.2	388 Florida State	-3.5	-6.1	-2.6
341 Virginia Tech				389 New Mexico			
342 Notre Dame	-17.5	-17.6	-0.1	390 Nevada	-3.5	-9.1	-5.6
343 Oregon				391 Utah			
344 USC	+4.5	+4.0	+0.5	392 Washington	+3.5	-1.0	+4.5
345 Colorado				393 Boise State			
346 UCLA	-6.5	-6.6	-0.1	394 San Jose State	+17	+18.4	-1.4
347 Kansas State				395 Fresno State			
348 Kansas	+6	+7.3	-1.3	396 Hawaii	-2	-1.7	+0.3

Top 20 CFB ATS Trends for Week 10

- West Virginia is 3-14-1 ATS as an underdog since the middle of 2015. This week the Mountaineers are 17.5-point underdogs at Baylor.
- Navy is a 27.5-point favorite at Connecticut this week. That's the largest away favorite role for Navy in 40 years. In fact, Navy's only been a 3-TD favorite one time in that span (-21 at Temple in 2007, didn't cover).
- While they're only in year 2, Liberty has never laid double-digits vs a FBS team and yet the Flames are 23-point favorites at UMass this week.
- Michigan head coach Jim Harbaugh is 4-0 SU (+32.5 ppg) and 4-0 ATS (+12.9 ppg) vs Maryland. This week the Wolverines are 21-point favorites at Maryland.
- Since 2008, Northwestern is 12-2 ATS as a double-digit road underdog with an average cover of 12 ppg. The Wildcats actually have a winning record straight up going 8-6.
- Bowling Green is 4-18 ATS at home since the end of the 2015 season. This week the Falcons are 6-point favorites hosting Akron.
- Illinois is 2-8 ATS laying 17 or more points in Big 10 play since 1990. This week, they're 20.5-point favorites vs Rutgers, their largest Big 10 favorite role since 2010.
- BYU in 33 meetings vs Utah St since 1980 has been the underdog one time...they won outright 31-14 in 2013. This week the Cougars are 3.5-point underdogs at Utah State.
- BYU is 21-6 ATS as a road dog since 2010.
- ND has struggled with nothing to play for in November going 6-15 ATS the last 5 years (-5.7 ppg) and 3-14 ATS taking out last year when they were unbeaten and were still shooting for a playoff bid. This week the Irish are 17.5-point favorites hosting Virginia Tech.
- USC is 23-3 SU at home under Helton (+2.5 ATS ppg). This week the Trojans are 4.5-point underdogs hosting Oregon.
- Kansas St is on a 10-0 SU/7-3 ATS run vs rival Kansas but the Jayhawks have covered 3 straight. This week Kansas St is a 6-point road favorite.
- South Carolina has beat Vanderbilt 10 straight times (+10.6 ppg) but the Gamecocks are only 5-4-1 ATS. This week South Carolina is a 15-point favorite hosting Vanderbilt.
- Memphis is 5-0 SU/ATS vs SMU with an average win by 35.2 ppg and an average cover of 21.4 ppg. This week Memphis is a 5.5-point favorite hosting SMU.
- Air Force is 17-2 SU/13-5-1 ATS hosting Army since 1980 but did lose their last home game to Army 21-0 in 2017. This week, the Falcons are 14.5-point favorites.
- The underdog has pulled the outright upset in each of the last 4 years between these Oklahoma State and TCU. This week TCU is a 3-point underdog at Oklahoma St.
- Arkansas St is on a 9-0 SU (+21.4 ppg) and 9-0 ATS (+13.1 ppg) run vs UL-Monroe. This week Arkansas St is a 2-point road favorite at ULM.
- 15 of the last 18 meetings between Miami and Florida St have been decided by 8 points or less. This week Florida St is a 3.5-point home favorite.
- Washington head coach Chris Petersen is 18-0 SU off a regular season bye going back to his Boise St days (11-7 ATS +4 ppg).
- Boise St is 37-19-1 ATS as a road favorite since 2008.

4★ = BEST
3★ = BETTER
2★ = GOOD
1★ = FAIR

THE POWERS' PACK

3★ Tampa Bay (+6.5) over SEATTLE
2★ Jacksonville (+1.5) over Houston
2★ PHILADELPHIA (-4.5) over Chicago

Games in Rotation Order

Thursday, October 31st

San Francisco 26 ARIZONA 17. Since 1989, favorites on Thursday have gone 136-94-8 ATS (59%). If you're laying 10 or more, you're 17-5-1 ATS (77%). The theory is that with half the prep time as compared to a normal game, it's more about the "Jimmy's and the Joe's" instead of the "X's and O's". The 49ers come in off a blowout win over Carolina and are off to their best start since 1990. Meanwhile, the Cardinals 3-game win streak came to a screeching halt in a blowout loss to New Orleans. The Cards 8-game win streak in this series will also come to a screeching halt here. However, we don't see much value.

Sunday, November 3rd

2★ † Jacksonville 24 Houston 22. @London, England. Jacksonville is playing in London for a 7th consecutive season (3-3 SU/ATS but 3-1 last 4). Meanwhile, Houston is making their first trip ever here. Advantage Jags. The Jags have revenge for a 13-12 loss to Houston in what was QB Gardner Minshew's first career start. In that game, Jacksonville went for 2-point conversion, but came up just short. They did hold Houston to a season-low 263 yards. Last week on these pages we lost with Houston as they barely escaped Oakland. However, they did lose DE JJ Watt for the season. Remember the key to Houston is getting pressure on QB Watson and Jacksonville is No. 3 in sacks (29).

BUFFALO 24 Washington 14. The Bills come in off their worst performance of the year, a blowout loss at home to Philadelphia. Now they're taking on a Washington team that hasn't scored a TD in 9 quarters. Case Keenum was concussed in last Thursday's loss to the Vikings and it looks like Dwayne Haskins will get the start here. The Bills aren't great in the home favorite role with Josh Allen (1-5 ATS) including 0-3 ATS this year. We're not getting involved.

CAROLINA 24 Tennessee 18. We don't mind playing against a Tennessee team that was out-gained by 143 yards vs Tampa on Sunday, but yet still won. That's now two fortunate wins in a row for them. Meanwhile, teams that lose by 35 or more points in the NFL (Carolina lost by 38 at San Francisco last week) are 86-67-9 ATS (56%) in their next game. Lean Carolina.

2★ PHILADELPHIA 25 Chicago 17. Rematch of last year's Wild Card playoff game where Chicago suffered the infamous "Double Doink" missed FG in a 1-point defeat. Philadelphia probably turned their season around last week in a blowout win over Buffalo. They did it the old-fashioned way running for 218 yards as they out-scored Buffalo 20-6 in the second half. Now they return home for the first time in a month. They're taking on a Chicago team off a gut-wrenching loss to the Chargers losing 17-16 when they missed a 41-yard FG. The Bears have been out-scored 50-21 in the 4Q this year. We like the Eagles.

Updated NFL Records: Straight Up, ATS and Over/Under

Team	Straight-Up		Against The Spread		Over/Under	
	Total	Home Away	Total	Home Away	Total	Home Away
Arizona	3-4-1	1-2-1 2-2-0	5-3-0	2-2-0 3-1-0	4-4-0	3-1-0 1-3-0
Atlanta	1-7-0	1-3-0 0-4-0	2-6-0	2-2-0 0-4-0	3-5-0	0-4-0 3-1-0
Baltimore	5-2-0	2-1-0 3-1-0	2-4-1	0-3-0 2-1-1	4-3-0	1-2-0 3-1-0
Buffalo	5-2-0	2-2-0 3-0-0	4-3-0	1-3-0 3-0-0	2-5-0	2-2-0 0-3-0
Carolina	4-3-0	1-2-0 3-1-0	4-3-0	1-2-0 3-1-0	5-2-0	2-1-0 3-1-0
Chicago	3-4-0	1-3-0 2-1-0	2-5-0	1-3-0 1-2-0	3-4-0	1-3-0 2-1-0
Cincinnati	0-8-0	0-3-0 0-5-0	3-5-0	0-3-0 3-2-0	2-5-1	2-0-1 0-5-0
Cleveland	2-5-0	0-3-0 2-2-0	2-5-0	0-3-0 2-2-0	3-4-0	2-1-0 1-3-0
Dallas	4-3-0	3-1-0 1-2-0	4-3-0	3-1-0 1-2-0	4-3-0	2-2-0 2-1-0
Denver	2-6-0	1-3-0 1-3-0	4-4-0	2-2-0 2-2-0	2-6-0	1-3-0 1-3-0
Detroit	3-3-1	2-2-0 1-1-1	4-3-0	2-2-0 2-1-0	5-2-0	3-1-0 2-1-0
Green Bay	7-1-0	4-1-0 3-0-0	6-2-0	3-2-0 3-0-0	5-3-0	3-2-0 2-1-0
Houston	5-3-0	3-1-0 2-2-0	4-4-0	1-3-0 3-1-0	4-4-0	1-3-0 3-1-0
Indianapolis	5-2-0	3-1-0 2-1-0	4-2-1	2-2-0 2-0-1	4-3-0	3-1-0 1-2-0
Jacksonville	4-4-0	2-2-0 2-2-0	5-3-0	2-2-0 3-1-0	4-3-1	2-2-0 2-1-1
Kansas City	5-3-0	1-3-0 4-0-0	4-4-0	1-3-0 3-1-0	5-3-0	3-1-0 2-2-0
L.A. Chargers	3-5-0	1-3-0 2-2-0	2-5-1	0-3-1 2-2-0	2-6-0	1-3-0 1-3-0
L.A. Rams	5-3-0	2-2-0 3-1-0	6-2-0	2-2-0 4-0-0	3-5-0	1-3-0 2-2-0
Miami	0-7-0	0-4-0 0-3-0	3-4-0	1-3-0 2-1-0	2-5-0	1-3-0 1-2-0
Minnesota	6-2-0	4-0-0 2-2-0	5-3-0	3-1-0 2-2-0	3-5-0	2-2-0 1-3-0
New England	8-0-0	4-0-0 4-0-0	6-2-0	3-1-0 3-1-0	2-6-0	2-2-0 0-4-0
New Orleans	7-1-0	4-0-0 3-1-0	6-2-0	3-1-0 3-1-0	4-4-0	2-2-0 2-2-0
N.Y. Giants	2-6-0	1-3-0 1-3-0	3-5-0	1-3-0 2-2-0	4-4-0	0-4-0 4-0-0
N.Y. Jets	1-6-0	1-3-0 0-3-0	2-5-0	1-3-0 1-2-0	3-4-0	1-3-0 2-1-0
Oakland	3-4-0	2-1-0 1-3-0	4-3-0	2-1-0 2-2-0	4-3-0	1-2-0 3-1-0
Philadelphia	4-4-0	2-1-0 2-3-0	3-5-0	1-2-0 2-3-0	5-3-0	2-1-0 3-2-0
Pittsburgh	3-4-0	2-2-0 1-2-0	3-3-1	1-2-1 2-1-0	2-5-0	2-2-0 0-3-0
San Francisco	7-0-0	3-0-0 4-0-0	5-2-0	2-1-0 3-1-0	2-5-0	1-2-0 1-3-0
Seattle	6-2-0	2-2-0 4-0-0	3-5-0	0-4-0 3-1-0	4-4-0	2-2-0 2-2-0
Tampa Bay	2-5-0	0-3-0 2-2-0	2-5-0	0-3-0 2-2-0	5-2-0	2-1-0 3-1-0
Tennessee	4-4-0	2-2-0 2-2-0	4-4-0	2-2-0 2-2-0	3-5-0	2-2-0 1-3-0
Washington	1-7-0	0-4-0 1-3-0	3-5-0	1-3-0 2-2-0	3-5-0	2-2-0 1-3-0

Minnesota 23 KANSAS CITY 20. Tough making a call here without Mahomes' status being cleared. Remember, he's the most valuable player in the NFL (worth 8 points). Still, we thought there was some value on KC last week and they nearly pulled the upset over Green Bay. QB Matt Moore was an efficient 24 of 36 for 267 yards and 2 TD's but Aaron Rodgers again played exceptionally well. Minnesota does have extra rest coming off a TNF win vs Washington. We're passing for now.

N.Y. Jets 22 MIAMI 18. Obviously, the story here is Adam Gase vs his former team. Last week the Jets got a promising 93-yard opening drive and then only totaled 120 yards for the rest of the game. Meanwhile, Miami got off to a hot start vs Pittsburgh (14-0) but then nearly blew the cover in a 27-14 loss (were -3 in TO's). That's now 3 covers in a row for them. We don't see too much value here.

PITTSBURGH 21 Indianapolis 20. The Steelers had covered 4 straight games prior to coming up 1-point short as a 2-TD favorite vs Miami on MNF. Pittsburgh was +3 in TO's and rallied from an early 14-0 deficit. Meanwhile, we lost on these pages with Indianapolis last week as they had to rally to beat Denver (51-yard FG with :22 left). The Steelers are 11-4-3 ATS (+4.6 ppg) as a home dog since early 2000.

OAKLAND 26 Detroit 24. Okay, the Raiders are certainly better than what we expected as last week they nearly beat Houston outright (a loser on these pages). Now they return home for the first time since mid-September after playing several playoff contenders away from home. They face a Detroit team that snapped a 3-game losing streak in a non-covering win vs the Giants. We're passing here.

3★ Tampa Bay (plus the points) SEATTLE 27 Tampa Bay 24. Generally speaking, we think Seattle is overrated. They're 5-1 in games decided by 7 points or less and they haven't played that tough of a schedule so far. Last week, they were out-gained 190 yards but somehow beat Atlanta 27-20. That's the 2nd time this season, they've been significantly out-gained by a terrible team (Cincy in Week 1), but still won the game. Meanwhile, Tampa Bay was +143 yards vs Tennessee, but lost by 4. The Bucs have had some tough luck as they are 1-3 in games decided by 7 points or less and last week lost because of a blown call. Seattle hasn't won a home game by more than 1-point this season and the Bucs already have road upsets at the Rams and Panthers this season, two teams similar to the Seahawks as far as a power rating goes. Finally, the look ahead line here was Seattle -5.5. Howe in the world did Seattle get upgraded and/or Tampa Bay get downgraded after those performances. Add it all up and you get our top play of the week.

Cleveland 20 DENVER 17. Baker Mayfield is the first Browns QB to have a pick in the first 7 games of the season since Charlie Frye in 2006. The Browns couldn't cover at New England last week despite a solid spot and it's clear Freddie Kitchens is in over his head. On the other side, the Broncos now have 3 losses this year on a last-second FG (they still covered vs Indianapolis). However, Flacco is a no-go here and they will start Brandon Allen at QB (6th round pick out of Arkansas, 3-year starter, hand size only 8 and 7/8 inches, avg NFL). Cleveland did win here last year. 17-16 but we're passing here.

Green Bay 26 L.A. CHARGERS 22. Even though the Packers beat us on these pages last week, we think they're overrated especially on the road. However, will this be a "true" road game here? We're not so sure as the "Cheese heads" will be in full force similar to that Pittsburgh/L.A. Chargers game earlier this year. The Chargers were fortunate last week that Chicago missed that last-second FG. Still, it broke their 3-game losing streak. But the Chargers still can't run the ball as they are the first team since the 1946 Detroit Lions to have 4 straight games with less than 40 yards rushing. Pass.

New England 24 BALTIMORE 21. After their 14-point win over the Browns, the Pats are +189 through the first 8 games (3rd best ever). However, this will be their toughest test yet taking on a Baltimore team fresh off a bye. The Ravens are 11-2 SU/9-4 ATS (+6.9 ppg) after a bye under head coach John Harbaugh. However, Belichick counters having won 21 straight games vs 1st or 2nd-year QB's. We expect this one to go down to the wire but don't see much value.

Monday, November 4th

Dallas 28 N.Y. GIANTS 20. Dallas comes in off a bye after getting a much-needed win vs rival Philadelphia. Dallas is now 11-1 SU/ATS vs the NFC East in their last 12 games. They've won those games by 10.9 ppg and covered by 8.8 ppg. Now they return to the scene of the crime where they lost outright to the Jets three weeks ago. Meanwhile, the Giants have now lost 4 straight despite the fact, QB Jones had a solid day vs the Lions (322 yards 4 TD's). Still, he's committed 14 TO's and has been sacked 21 times in his 6 starts!

Just missed the cut: Pittsburgh +1 over Indianapolis and Carolina -3.5 over Tennessee

2018-19 Season: 103-64-1 (62%)

Week 1 College:

3★ Northern Illinois +10.5 over IOWA	L	(\$330)
2★ Florida Atlantic +21 over OKLAHOMA	L	(\$220)
2★ UMass +18 over BOSTON COLLEGE	L	(\$220)
2★ Texas -13.5 over Maryland	L	(\$220)
2★ WYOMING +1.5 over Washington St	L	(\$220)

Week 2 College:

3★ Georgia Tech (-3) over SOUTH FLORIDA	L	(\$330)
3★ STANFORD (-5) over USC	W	\$300
2★ Arizona (+4.5) over HOUSTON	L	(\$220)
2★ TEXAS (-23) over Tulsa	L	(\$220)
2★ California (+3.5) over BYU	W	\$200

Week 1 NFL:

3★ Pittsburgh/CLEVELAND UNDER 44	W	\$300
2★ MINNESOTA -6 over San Francisco	W	\$200
2★ MIAMI +1.5 over Tennessee	W	\$200

Week 3 College:

3★ PURDUE +7 (-120) over Missouri	W	\$300
3★ Georgia Southern +34 over CLEMSON	W	\$300
2★ SYRACUSE +3.5 (-120) over Florida St	W	\$200
2★ UAB +4 over Tulane	W	\$200
2★ UL-Monroe +27 over TEXAS A&M	L	(\$220)

Week 2 NFL:

3★ PITTSBURGH -4 over Kansas City	L	(\$330)
2★ Indianapolis +6 over WASHINGTON	W	\$200
2★ ATLANTA -6 over Carolina	W	\$200

Week 4 College:

3★ Michigan St -4.5 over INDIANA	W	\$300
3★ IOWA ST -18.5 over Akron	L	(\$330)
2★ BAYLOR -7.5 over Kansas	W	\$200
2★ Louisiana Tech +21 over LSU	W	\$200
2★ Texas A&M +27 over ALABAMA	W	\$200

Week 3 NFL:

3★ SEATTLE -1.5 over Dallas	W	\$300
2★ BALTIMORE -5 over Denver	W	\$200
2★ CLEVELAND -3 over N.Y. Jets	W	\$200

Week 5 College:

3★ FRESNO ST -7.5 over Toledo	W	\$300
3★ CALIFORNIA +3 (-120) over Oregon	L	(\$360)
2★ Byu +17.5 over WASHINGTON	L	(\$220)
2★ LSU -12 over Ole Miss	W	\$200
2★ Ohio St/PENN ST UNDER 72	W	\$200

Week 4 NFL:

3★ NEW ENGLAND -7 (-105) over Miami	W	\$300
2★ Cincinnati +5.5 over ATLANTA	W	\$200
2★ OAKLAND -2.5 over Cleveland	W	\$200

Week 6 College:

3★ TEXAS A&M -5.5 over Kentucky	W	\$300
3★ Iowa -7 over MINNESOTA	W	\$300
2★ Northern Illinois -3 over BALL ST	W	\$200
2★ Northwestern +11 over MICHIGAN ST	W	\$200
2★ WYOMING +3.5 over Hawaii	L	(\$220)

Week 5 NFL:

3★ Oakland +5.5 over L.A. CHARGERS	L	(\$330)
2★ BUFFALO +3.5 over Tennessee	W	\$200
2★ Arizona +4.5 over SAN FRANCISCO	W	\$200

Week 7 College:

3★ CALIFORNIA -7 over UCLA	L	(\$330)
3★ Duke +3 over GEORGIA TECH	W	\$300
2★ Florida -7 over VANDERBILT	W	\$200
2★ IOWA ST +6.5 over West Virginia	W	\$200
2★ RICE +16.5 over Uab	L	(\$220)

Week 6 NFL:

3★ TENNESSEE +3 (-120) over Baltimore	L	(\$330)
2★ Indianapolis +2.5 over N.Y. JETS	L	(\$220)
2★ Pittsburgh +2.5 over CINCINNATI	W	\$200

Week 8 College:

3★ ARKANSAS -7 over Tulsa	W	\$300
---------------------------	---	-------

3★ Stanford -2.5 over ARIZONA ST	W	\$300
2★ UAB PK over North Texas	W	\$200
2★ UTAH -6.5 over USC	W	\$200
2★ Nevada +3 over HAWAII	W	\$200

Week 7 NFL:

3★ JACKSONVILLE -4.5 over Houston	L	(\$330)
2★ Minnesota -3 (-120) over N.Y. JETS	W	\$200
2★ TAMPA BAY -3 (-120) over Cleveland	P	\$0

Week 9 College:

3★ Texas A&M +2.5 over MISSISSIPPI ST	L	(\$330)
3★ IOWA ST -3.5 over Texas Tech	W	\$300
2★ STANFORD -3 over Washington St	L	(\$220)
2★ Iowa +6.5 over PENN ST	W	\$200
2★ ARKANSAS +1.5 over Vanderbilt	L	(\$220)

Week 8 NFL:

3★ Green Bay +9.5 over L.A. RAMS	W	\$300
2★ San Francisco PK over ARIZONA	L	(\$220)
2★ Denver/KANSAS CITY UNDER 54	W	\$200

Week 10 College:

3★ Louisiana Tech +23 over MISSISSIPPI ST	L	(\$330)
3★ Michigan St -2.5 over MARYLAND	W	\$300
2★ Ohio -2 over WESTERN MICHIGAN	W	\$200
2★ FLORIDA -6 over Missouri	L	(\$220)
2★ NORTHWESTERN +9.5 over Notre Dame	L	(\$220)

Week 9 NFL:

3★ SEATTLE -1.5 over L.A. Chargers	L	(\$330)
2★ MINNESOTA -4.5 over Detroit	W	\$200
2★ Pittsburgh +3 over BALTIMORE	W	\$200

Week 11 College:

3★ NORTHERN ILLINOIS -3.5 over Toledo	W	\$300
3★ Texas -1.5 over TEXAS TECH	W	\$300
2★ PITTSBURGH -3 over Virginia Tech	W	\$200
2★ Liberty +23.5 over VIRGINIA	W	\$200
2★ TENNESSEE +6 over Kentucky	W	\$200

Week 10 NFL:

3★ PHILADELPHIA -6.5 over Dallas	L	(\$330)
2★ Seattle +10 over L.A. RAMS	W	\$200
2★ Buffalo +7.5 over N.Y. JETS	W	\$200

Week 12 College:

3★ MINNESOTA +2 over Northwestern	L	(\$330)
3★ Syracuse +10.5 over Notre Dame	L	(\$330)
2★ NEBRASKA +2.5 over Michigan St	W	\$200
2★ OREGON -3.5 over Arizona St	L	(\$220)
2★ OVER 59.5 Cincinnati/CENT. FLORIDA	L	(\$220)

Week 11 NFL:

3★ Kansas City +3.5 over L.A. RAMS	W	\$300
2★ Philadelphia +9 over NEW ORLEANS	L	(\$220)
2★ Minnesota +2.5 over CHICAGO	L	(\$220)

Week 13 College:

3★ SMU -2 over Tulsa	L	(\$330)
3★ Nebraska +10 over IOWA	W	\$300
2★ MEMPHIS -7 over Houston	W	\$200
2★ OHIO ST +4.5 over Michigan	W	\$200
2★ Stanford -6.5 over UCLA	W	\$200

Week 12 NFL:

3★ BUFFALO +3.5 (-120) over Jacksonville	W	\$300
2★ CAROLINA -3.5 over Seattle	L	(\$220)
2★ DENVER +3 (EV) over Pittsburgh	W	\$200

Week 14 College:

2★ Washington -5.5 over Utah	W	\$200
1★ Texas +8 over Oklahoma	L	(\$110)

Week 13 NFL:

3★ PITTSBURGH -3.5 over L.A. Chargers	L	(\$330)
2★ DALLAS +7.5 over New Orleans	W	\$200
2★ ATLANTA -1 over Baltimore	L	(\$220)

Week 14 NFL:

3★ Indianapolis +4.5 over HOUSTON	W	\$300
2★ Carolina -1.5 over CLEVELAND	L	(\$220)

2★ GREEN BAY -5.5 over Atlanta	W	\$200
--------------------------------	---	-------

Week 15 NFL:

3★ INDIANAPOLIS -3 (EV) over Dallas	W	\$300
2★ MINNESOTA -7 over Miami	W	\$200
2★ Tennessee +2.5 (EV) over N.Y. GIANTS	W	\$200

Week 16 NFL:

3★ SEATTLE +2.5 over Kansas City	W	\$300
2★ Minnesota -5.5 over DETROIT	W	\$200
2★ MIAMI -4 over Jacksonville	L	(\$220)

Week 17 NFL:

3★ BUFFALO -3.5 over Miami	W	\$300
2★ GREEN BAY -8 over Detroit	L	(\$220)
1★ Indianapolis -3 over TENNESSEE	W	\$100

Bowls and College Football Playoffs:

1★ North Texas (+8) over Utah St	L	(\$110)
1★ UL-Lafayette (+3.5) over Tulane	L	(\$110)
1★ Fresno St (-4.5) over Arizona St	W	\$100
1★ Eastern Mich (+2.5) over Georgia Southern	W	\$100
2★ Middle Tenn (+7) over Appalachian St	L	(\$220)
2★ Uab (-2.5) over Northern Illinois	W	\$200
1★ San Diego St (+3) over Ohio	L	(\$110)
1★ Marshall/SOUTH FLORIDA UNDER 55.5	L	(\$110)
2★ Florida International (+5.5) over Toledo	W	\$200
1★ Western Michigan (+12) over BYU	L	(\$110)
1★ Wake Forest (+4.5) over Memphis	W	\$100
1★ Army (-3) over Houston	W	\$100
3★ Troy (+3) over Buffalo	W	\$300
1★ Louisiana Tech/HAWAII OVER 60	L	(\$110)
1★ Boston Coll/Boise St UNDER 56	Cancelled	
2★ Georgia Tech (+4.5) over Minnesota	L	(\$220)
1★ Tcu/California OVER 39.5	L	(\$110)
2★ Duke (+4.5) over Temple	W	\$200
1★ Wisconsin (+3.5) over Miami, FL	W	\$100
1★ Baylor (+4.5) over Vanderbilt	W	\$100
1★ Purdue/Auburn OVER 55	W	\$100
3★ Syracuse (+1.5) over West Virginia	W	\$300
2★ Iowa St (+3.5) over Washington St	W	\$200
2★ Nevada (+2) over Arkansas St	W	\$200
2★ Florida (+7.5) over Michigan	W	\$200
1★ South Carolina (-5) over Virginia	L	(\$110)
1★ Alabama (-14) over Oklahoma	L	(\$110)
1★ Notre Dame (+13.5) over Clemson	L	(\$110)
2★ Va Tech (+5.5) over Cincinnati	W	\$200
1★ Stanford (-5.5) over Pittsburgh	L	(\$110)
2★ Michigan St (+2.5) over Oregon	W	\$200
1★ Missouri/Oklahoma ST UNDER 74.5	W	\$100
1★ Northwestern (+7) over Utah	W	\$100
2★ Texas A&M (-7) over NC State	W	\$200
1★ Iowa (+7) over Mississippi St	W	\$100
1★ Penn St (-6.5) over Kentucky	L	(\$110)
1★ LSU (-7) over Central Florida	W	\$100
4★ Ohio St (-6.5) over Washington	L	(\$440)
2★ Texas (+13) over Georgia	W	\$200
1★ Clemson/Alabama OVER 59.5	W	\$100

NFL Playoffs:

1★ Indianapolis (+1.5) over HOUSTON	W	\$100
1★ Seattle (+1.5) over DALLAS	L	(\$110)
1★ L.A. Chargers (+2.5) over BALTIMORE	W	\$100
1★ CHICAGO (-5.5) over Philadelphia	L	(\$110)
2★ Indianapolis (+5.5) over KANSAS CITY	L	(\$220)
1★ L.A. RAMS (-7) over Dallas	W	\$100
2★ NEW ENGLAND (-4) over L.A. Chargers	W	\$200
1★ NEW ORLEANS (-8) over Philadelphia	L	(\$110)
1★ NEW ORLEANS (-3.5) over L.A. RAMS	L	(\$110)
1★ KANSAS CITY (-3) over New England	L	(\$110)
1★ New England/L.A. Rams UNDER 56.5	W	\$100

POWERS' PICKS

- Best winning % of all newsletters last 4 years in CFB/NFL combined!
- 146-96-4 (60%) record on every single NFL pick last 4 years!!!
- Emailed every Wednesday at Noon EST/9am PST during regular season
- Emailed monthly during the off-season
- Write-ups on every single CFB/NFL game played each week
- News and Notes
- Bad Beats
- Misleading Finals
- Major Injuries
- Weekly CFB Power Ratings on all 130 teams
- Full-season CFB and NFL Schedule Logs for every single team
- Computer Projected Lines for Every CFB Game
- Top CFB ATS Trends
- Pictures of actual bets made by Brad Powers during the week!

POWERS' PICKS #1 Newsletter Last 4 Years!!

2015-18 Combined Nationwide Football Newsletter Contest (Regular Season Only)

We are happy to provide you with the records, standings and plays used from the Power Sweep (3★, 4★ & Underdog), Gold Sheet (Key Releases), Power Plays (4.5★), Sports Reporter (Best & Super Bets), Winning Points (Best Bets & Preferred), Playbook (3-5★'s), Pointwise (Ratings 1-4) and Powers' Picks (1-4★'s)

College Newsletter	W	L	T	%	Net	NFL Newsletter	W	L	T	%	Net	College/NFL Combined Newsletter	W	L	T	%	Net
Powers' Picks	144	123	4	53.93%	21	Powers' Picks	119	79	4	60.10%	40	Powers' Picks	263	202	8	56.56%	61
Sports Reporter	106	92	7	53.54%	14	Power Sweep	72	59	4	54.96%	13	Sports Reporter	179	152	10	54.08%	27
Power Sweep	109	98	4	52.66%	11	Sports Reporter	73	60	3	54.89%	13	Power Sweep	181	157	8	53.55%	24
Playbook	77	73	8	51.33%	4	Gold Sheet	102	94	8	52.04%	8	Winning Points	294	288	15	50.52%	6
Pointwise	158	151	10	51.13%	7	Winning Points	133	132	7	50.19%	1	Pointwise	254	253	18	50.10%	1
Winning Points	161	156	8	50.79%	5	Pointwise	96	102	8	48.48%	-6	Playbook	173	177	12	49.43%	-4
Power Plays	89	93	10	48.90%	-4	Playbook	96	104	4	48.00%	-8	Gold Sheet	200	205	13	49.38%	-5
Gold Sheet	98	111	5	46.89%	-13	Power Plays	34	39	0	46.58%	-5	Power Plays	123	132	10	48.24%	-9
Combined	942	897	56	51.22%	45	Combined	725	669	38	52.01%	56	Combined	1667	1566	94	51.56%	101

Powers' Picks Newsletter: (28 Email Issues) Just \$99

Have questions? Need more info? Want to sign up?

Call 1-702-419-0473

or order online at bradpowerssports.com

You can also send a check payable to:

BP Sports, LLC

**2764 N. Green Valley Pkwy #103
Henderson, NV 89014**