

Sonesse Ultra 50

Sonesse Ultra 50 RH

EN Instructions

FR Notice

ORIGINAL GUIDE

These instructions applies to all Sonesse Ultra 50 and Sonesse Ultra 50 RH drive irrespective of torque and speed variations.

CONTENTS

1. Prerequisite information	8	3. Use and maintenance	13
1.1 Fields of application	8	3.1. Up and Down buttons	13
1.2 liability	9	3.2. STOP function	13
2. Installation	9	3.3. Tips and recommendations for use	13
2.1. Installation	9	4. Technical data	13
2.2. Wiring	10		
2.3. Commissioning	11		
2.4. Tips and recommendations for installation	12		

The Sonesse Ultra 50 drive has been developed to meet indoor awning drive requirements. Its quiet operation ensures user comfort and well-being.

For more information, and to optimise the acoustic performance of your indoor awning, please contact a Somfy adviser.

1. PREREQUISITE INFORMATION

1.1 FIELDS OF APPLICATION

The Sonesse 50 drive is designed to drive all types of indoor awning (Roller blinds and projection screens), excluding pantographs.

The Sonesse 50 drive is designed to drive multi-banding roller blinds.

The Sonesse 50 drive is designed to drive several roller blinds simultaneously, where these are interconnected by a drive bracket.

The Sonesse 50 drive is not designed to be used with a compensating spring.

Any use outside the fields of application is prohibited, in particular:

The Sonesse 50 drive is not designed for outdoor awnings (e.g. outdoor vertical blinds, roller shutters, etc.)

1.2 LIABILITY

Before installing and using the drive, please read **operating and installation guide carefully**. In addition to following the instructions given in this guide, the instructions detailed in the attached **Safety instructions** document must also be observed.

The drive must be installed by a drive and home automation professional, according to instructions from Somfy and the regulations applicable in the country in which it is commissioned.

It is prohibited to use the drive outside the fields of application described above. Such use, and any failure to comply with the instructions given in this guide and in the attached **Safety instructions** document, absolves Somfy of any liability and invalidates the warranty.

The installer must inform its customers of the operating and maintenance conditions for the drive and must provide them with the instructions for use and maintenance, and the attached **Safety instructions** document, after installing the drive. Any After-Sales Service operation on the drive must be performed by a drive and home automation professional.

If in doubt when installing the drive, or to obtain additional information, contact a Somfy adviser or go to the website www.somfy.com.



Safety warning!



Caution!



Information





Up



Down


2. INSTALLATION


 Instructions which **must** be followed by the drive and home automation professional installing the Sonesse 50 drive.

 Never drop, knock, drill or submerge the drive.

 Install a separate control point for each drive.

 Never connect two control points to a single motor.

 Never connect two motors to a single control point.

 To optimize silence, the mechanical plays between motor, accessories, tube and end of tube must be decreased to the maximum.

2.1. INSTALLATION

2.1.1. Preparing the drive

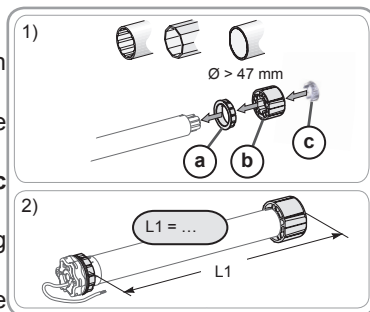
Check that the inner diameter of the tube greater than 47mm.

1) Fit the accessories required to integrate the drive in the roller tube:

- Fit the crown **a**, the drive wheel **b** and the stop wheel **c** on the drive.

The stop wheel must be screwed with a torque ranging between 1.5 and 1.8 Nm.

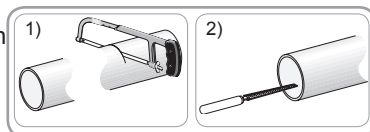
2) Measure the length (L1) between the inner edge of the drive head and the rim of the drive wheel.



2.1.2. Tube preparation

1) Cut the roller tube to the required length, depending on the motorised product.

2) Deburr the roller tube and remove the swarf.



2.1.3. Drive/tube assembly

1) Slide the drive into the roller tube.

For roller tubes which are smooth inside, position the notch previously cut on the boss on the crown.

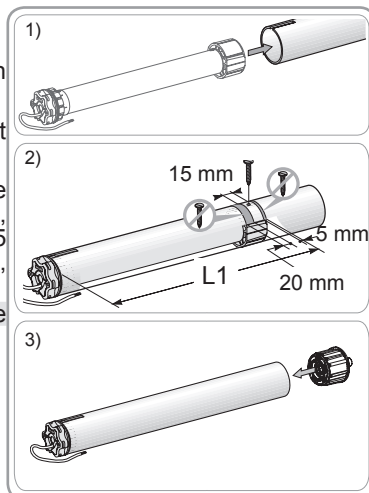
2) The drive wheel must be locked in place to prevent it moving along the roller tube:

- This can be done either by fixing the roller tube to the drive wheel using 4 x Ø 5 mm self-tapping screws, or by using 4 x Ø 4.8 mm steel pop rivets placed 5 mm to 15 mm from the outer rim of the drive wheel, regardless of the roller tube.



The screws or pop rivets must only be attached to the drive wheel and not to the drive.

3) Slide the end cap into the roller tube.



2.1.4. Installing the drive/tube assembly



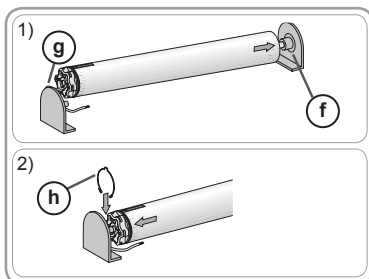
The motorised product must not be compressed between the brackets

1) Install and fix the drive/tube assembly onto the end bracket **f** and onto the drive bracket **g**:



Ensure that the drive/tube assembly is secured onto the end bracket. This operation prevents the drive/tube assembly from coming out of the end bracket mounting when the roller blind reaches the lower end limit position.

2) Depending on the type of bracket, fit the stop ring **h** in place.



2.2. WIRING

Cables which pass through a metal wall must be protected and isolated using a sheath or sleeve.

Attach cables to prevent any contact with moving parts.

The cable on the Sonesse 50 can be removed. If it is damaged, replace it with an identical cable.

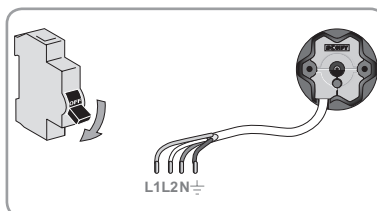


Leave the drive power supply cable accessible: it must be possible to replace it easily.

- Switch off the power supply.

- Connect the drive according to the information in the table below:

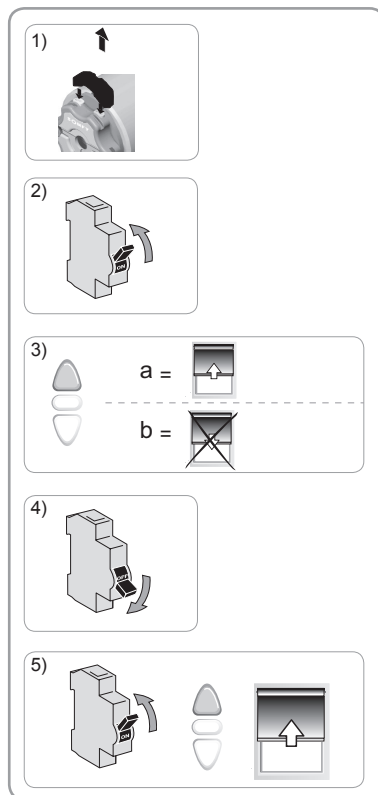
	Neutral (N)	Live (L1)	Live (L2)	Earth (⊥)
120V -60 Hz	White	Black	Red	Green



2.3. COMMISSIONING

2.3.1. Checking the direction of rotation

- 1) Remove the protective housing.
Press the white and yellow buttons simultaneously.
- 2) Switch the power back on.
- 3) Press the **▲** button on the control point:
 - a) If the motorised product rises (a), the direction of rotation is correct: Move onto the section entitled "Setting the end limits".
 - b) If the motorised product lowers (b), the direction of rotation is incorrect: Move onto the next step.
- 4) Switch off the power supply.
Reverse the 2 phase wires on the control point.
- 5) Switch the power back on.
Press the **▲** button on the control point to check the direction of rotation.



2.3.2. Setting the end limits

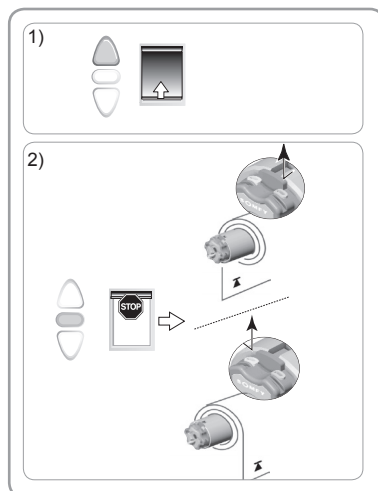
The end limits can be set in any sequence.

Setting the upper end limit

- 1) Press the **▲** button on the control point to raise the motorised product to the upper end limit.
- 2) Press the **Stop** button on the control point when the motorised product reaches the desired upper end limit.

Looking from the point of view of the motor head:

- If the motorised product rises on the left-hand side of the motor head, press the yellow button to unlock it: the upper end limit is set.
- If the motorised product rises on the right-hand side of the motor head, press the white button to unlock it: the upper end limit is set.

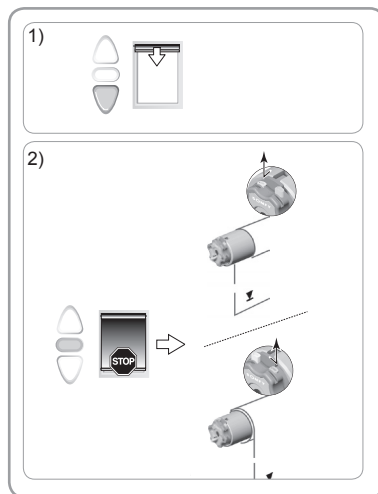


Setting the lower end limit

- 1) Press the **V** button on the control point to lower the motorised product to the lower end limit.
- 2) Press the **Stop** button on the control point when the motorised product reaches the desired lower end limit.

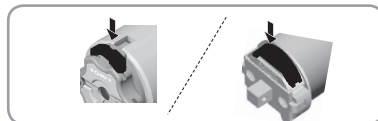
Looking from the point of view of the motor head:

- If the motorised product lowers on the left-hand side of the motor head, press the white button to unlock it: the lower end limit is set.
- If the motorised product lowers on the right-hand side of the motor head, press the yellow button to unlock it: the lower end limit is set.



Refit the protective housing.

The end limits are set.




2.4. TIPS AND RECOMMENDATIONS FOR INSTALLATION

2.4.1. Questions about the Sonesse Ultra 50?

Observations	Possible causes	Solutions
The motorised product does not operate.	The wiring is incorrect.	Check the wiring and modify it if necessary.
	The drive is in thermal protection.	Wait until the motor cools down.
	The control point is not compatible.	Check for compatibility and replace the control point if necessary.
The motorised product is noisy:	The drive wheel and the crown are not suitable for the tube.	Replace the drive wheel and the crown
	The motorised product is compressed between the brackets	Increase the play between the brackets
	The tube contains swarf and screws.	Clean the roller tube.
The motorised product stop to soon or to late.	The end-limits of the motorised product drift.	Readjust the end-limits

3. USE AND MAINTENANCE

i This drive is maintenance-free

 For the safety of goods and people, Somfy motors are equipped with thermal protection that will trigger the motor stops in the event of overheating.

Repeated achieving this protection can degrade engine performance.

If the motor goes to thermal protection, please check your installation and check that the motor is rated for the intended use.

A normal installation is not expected to trig this protection.

To avoid the drift of the end limits, do not cut the power supply more than 1 week.

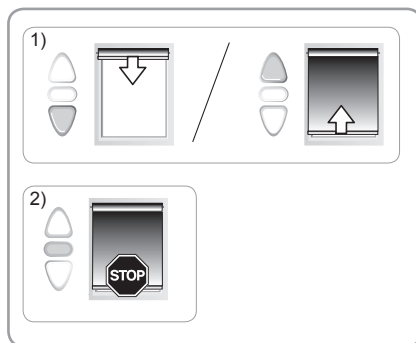
3.1. UP AND DOWN BUTTONS

Pressing the **Λ** or **V** button fully raises or lowers the motorised product.

3.2. STOP FUNCTION

The motorised product is moving.

Pressing the **Stop** button stops the motorised product.



3.3. TIPS AND RECOMMENDATIONS FOR USE

3.3.1. Questions about the Sonesse Ultra 50?

Observations	Possible causes	Solutions
The motorised product does not operate.	The drive is in thermal protection.	Wait until the motor cools down.

If the motorised product still does not work, contact a drive and home automation professional.

4. TECHNICAL DATA

Power supply	230V~ 50 Hz	120V~ 60 Hz	220V~ 60 Hz	100V~ 50/60 Hz
Operating temperature	0°C to + 60°C			
Index protection rating	IP 31			
Safety level	Class I			



Somfy hereby declares that the drive covered by these instructions when marked for input voltage 230V 50Hz when used as intended according to these instructions, is in compliance with the essential requirements of the Machinery Directive 2006/42/EC and the EMC Directive 2004/108/EC.

An EC declaration of conformity detailing standards and specifications used and stating all particulars for identification of the drive, name and address of the person(s) authorised to compile the technical file and empowered to draw up the declaration including place and date of issue can be found at the Internet address www.somfy.com/ce.

Somfy SAS
50 avenue du Nouveau Monde
F-74300 CLUSES

www.somfy.com