

# Light *of* Life

OCTOBER 2019



**TRUNK  
— OR —  
TREAT**

(AND HOT DOGS TOO!)

Sunday, October 27  
5-8pm

Burke Lutheran Church | 5720 Portage Rd | Madison, WI 53718  
608.244.8486 | www.burkelutheran.org

The poster features a green background with a dark car on the left. A spiderweb with a black spider is hanging from the car's roof. The text is in a bold, yellow, distressed font.

## LEFSE FOR SALE

Lefse from the kitchen of Burke Lutheran Church is now available for sale. Each package contains 6 round sheets made with tender loving care. Cost is \$9 per package. Contact Peri Beal during the week, Monday—Thursday, 8am—noon or on Sunday morning to get yours.

We're busy in the kitchen making Lefse twice a week, Wednesdays and Fridays, 8am — 11am. Remaining dates are October 2, 4, 9, 11, 16 and 18.

If you'd like to help, stop in anytime. No experience necessary. Everyone is welcome to come and learn how to roll and make our famous lefse. Lefse will also be sold at our upcoming Craft & Bake Sale held on November 9.



## OUR STAFF

### Pastor

Robert Neubert,  
240-215-5176  
gumby523@yahoo.com

### Administrative Secretary

Peri Beal, 608-244-8486  
burkelutheran@att.net

### Maintenance Engineer

Dave Wisner

### Nursery Supervisor

A Volunteer

## BURKE LUTHERAN CHURCH

5720 Portage Rd / Madison, WI 53718  
608-244-8486 / burkelutheran@att.net  
www.burkelutheran.org

## CRAFT & BAKE SALE

NOVEMBER 9, 8-4PM

Please come, bring friends, there's something for everyone. While you shop, take time out to enjoy a cup of coffee, a delicious bakery item and the fellowship of friends. A sandwich plate of a BBQ or hot dog, chips, pickle, cookie and coffee or lemonade will be available for purchase, as well as our famous lefse, and new this year, quilts.

Signup sheets will be in the Narthex for bakers and volunteers to work at the event. All profit from both the craft and bake sale will go towards the new kitchen needs when the church is moved. If you have any questions about the sale please contact the church office.

**Crafters:** Are you a maker? Or know someone who is? Then register to have a table by contacting the church office. Tables are \$25 each. Crafters are responsible for setting up their display, collecting funds and taking down their display. We will furnish tables and tablecloths. We ask that you do not bring commercial products to sell. The church will be open on Friday, November 8th, 9am-4pm for you to set up your table. Teardown after the fair is from 4:01pm—6pm. No early teardowns please.

(continued on Page 6)

# A MESSAGE FROM PASTOR ROBERT.....

Brothers and sisters in Christ,

Being a student of history I often reflect back on the major events that have shaped us. Recently I have been reflecting upon the Civil War and the many broad themes that shaped that bloody period in American history, and while slavery, states rights, racism, and power were all involved in the reasons why war broke out I believe they were all secondary to the real reason behind it all, fear. In the north they feared that succession was a threat to the government's power, and in the south they feared the change that freeing the slaves would bring to their economy. This fear would manifest its self in anger, frustration, hate, and bitterness resulting in the deaths of nearly 650,000 people between the years 1861-1865. Since then there have been several more movements that have brought fundamental change to our society including the Industrial Revolution, Woman's Suffrage, Civil Rights movement, and currently the Black Lives Matter and Me Too movements are continuing to change the way we think and act as I write this. Every movement throughout history has affected the world in both positive and negative ways pushing us forward in often unexpected directions. Black Lives Matter and Me Too continue to grow and affect our society in various ways, what the end results of those movements are we have yet to know, but things are changing, and that can be scary.

The church in general is changing and this has caused its place in society to begin shifting. Once upon a time Churches were the center of local communities yet due to a variety of reasons we have seen local churches sidelined in many areas. Some of these reasons are beyond the control of local churches as the culture around them continues to change. Unfortunately, some of the reasons why this is happening is the fault of the churches themselves

as they may have abused their power, were not welcoming to newcomers, or failed to progress in order to meet the needs of the communities around them. One of the main reasons is that we live in an increasingly more diverse population where people's beliefs are more and more varied. This can cause a lot of fear and anxiety amongst those who are living through these changes because not only does it affect the church but it also affects the local community as they grow or shrink depending upon what area one lives in.

As the world changes all around us, it is important to remember that God is with us in the midst of the change. Even though there may be some rather large bumps in the road God's presence continues to surround us. Even though there are many loud people out there spreading anger and division regarding the changes in our society, many more are out there calling for peace and reconciliation. A sign of hope that I see throughout our national church body, the ELCA, is that while in many churches the numbers may be shrinking, but the level of faith is rising. This has resulted in many young people in this nation who may have drifted away from churches coming back, inspired by the level of faith they see turned into action. Since it is no longer socially dictated that individuals should go to church, those who do go are there of their own choosing and therefore share a much deeper faith in Christ's word than people did twenty years ago. There are many things in this world to be afraid of but remember God is in the midst of the change, all we have to do is listen to where God is leading us.

Peace and Blessings,  
Pastor Robert



## PRAYER CONCERNS

During the month of August, we have remembered the following individuals in our Sunday prayers:

- |                |                   |                                    |
|----------------|-------------------|------------------------------------|
| Tina Bauman    | Lisa Thompson     | Mary Skinvik                       |
| Bev Lowe       | Harper DeBauche   | Fred Sandridge                     |
| Helen Knuteson | Jane Ford Bennett | Rudy Nielsen                       |
| Cheryl Budack  | Janeen Lauersdorf | Friends and family of Ardyth Loga. |

*We apologize if we have missed anyone, it was not intentional*

## FOOD PANTRY

October's focus is on "Toiletries: shampoo, deodorant, toothpaste, toothbrushes, mouthwash, hair brushes/combs, toilet paper, baby diapers, feminine products, Depends, etc. Please place items in the designated basket in the Narthex and it will be delivered to the pantry.



## MEN'S BREAKFAST

The next Men's Breakfast is Wednesday, October 9 at Gus' Diner, Hwy 19, Sun Prairie, at 9:00am. Stop in for a cup of joe, a hearty breakfast and connect with brothers in Christ.



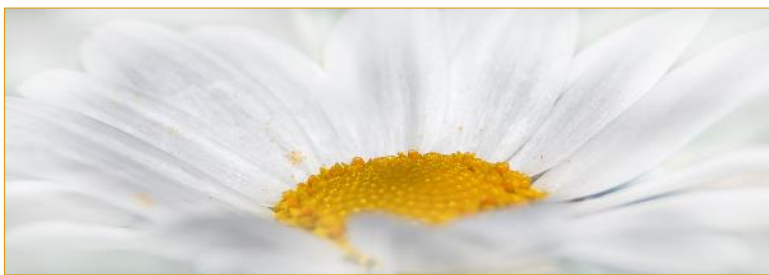
## RIVER FOOD PANTRY

FRIDAY, OCTOBER 18



Volunteering at The River gives people a feeling of satisfaction. A sense of fulfillment. It's about providing nutrition while nourishing a connected community. The River counts on neighbors to help neighbors in need. We

invite you to step inside and take a seat at the table. See who we serve. See how we serve. See why we serve. Burke Lutheran Church has committed to providing **three** servers once a month. Sign up on the sheet in the Narthex today.



## BLCW MEETING

The next BLCW Meeting is Wednesday, October 15 at 10:00am in the church basement. All female members (and Dave too!) of Burke Lutheran Church are invited. Hope to see you there!

## CARDMAKING WITH BARB

Join Barb on Tuesday, October 8 at 1:00pm for a little crafty fun! We'll meet at Barb's home, located at 6260 Sommer Valley Circle, DeForest. Please RSVP to Barb at [bjhennings@aol.com](mailto:bjhennings@aol.com) or 608-445-0566. We'll be making cards celebrating Veteran's Day.

## LUTHERAN WORLD RELIEF



Thank you to Sharon Hughes and her many elves for assembling 60 baby kits (pictured), 60 health kits, and 106 school kits. Also thank you to our quilters for 68 quilts. All of which will be on a plane to help those in need through Lutheran World Relief!

## SUNDAY SPOTLIGHT MINISTRY

Please join us in the Fellowship hall following worship on the second Sunday of each month. This month, learn more about the amazing ministry of the DeForest Area Needs Network on Sunday, October 13.



DANN's Mission: To provide and coordinate help for people in the DeForest Area School District, in the areas of safety, health and daily tasks by dispersing funds received via fundraising activities or donations. We are also committed to providing respect, care, compassion, prayer and friendship to the people we encounter along the way.

Contact DANN at 608-846-9603, [blankenhagen@countyofdane.com](mailto:blankenhagen@countyofdane.com) or visit their website at <http://www.deforest-area-needs-network.net/html/>

## LIGHT OF LIFE & SUNDAY BULLETIN ARTICLES

If you have news you'd like to see in the Sunday bulletin announcements and/or Light of Life newsletter:

1. Email your submissions to [burkelutheran@att.net](mailto:burkelutheran@att.net) (please indicate in the subject line whether it is for the bulletin, LOL or both), or
2. Mail to church, 5720 Portage Rd, Madison, WI 53718, or 3. Turn it into the church office with Attn: Peri

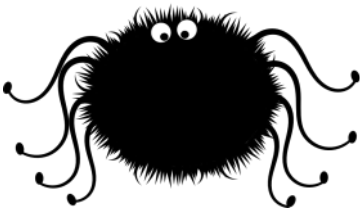
BULLETIN DEADLINE: **Noon on Wednesdays**

LIGHT OF LIFE DEADLINE: **15th of the month**

# Youth & Kids Corner

## SUNDAY SCHOOL SCHEDULE

- October 6 Class
- October 13 Class
- October 20 Kids in Service
- October 27 Class
  
- November 3 Class
- November 10 Class
- November 17 Kids in Service
- November 24 Pageant practice
  
- December 1 Pageant practice
- December 8 Pageant practice
- December 15 Pageant
- December 22 Winter break
- December 29 Winter break
  
- Jan 5, 2020 Classes resume



## SUNDAY SCHOOL SCOOP

Serving on your Teach Board...  
 Chairperson: Open  
 Council Rep: David Hanson      Treasurer: Open  
 Superintendent: Jean Schnick      Secretary: Open

## TEACH BOARD LEADERSHIP

We need a chairperson, treasurer & a secretary for the Teach Board. This would give you a chance to do something interesting and creative for education here at Burke Lutheran. If interested, please contact the Teach Board Council Rep, David Hanson, at 608-279-3159.

## TRUNK OR TREAT

SUNDAY, OCTOBER 27, 5:00—8:00PM  
 Our second annual Trunk or Treat event is set for Sunday, October 27. New this year is a hotdog stand. Vehicles will be parked around our graveyard and visited by the trick-or-treaters.

Consider signing up to decorate your trunk and provide treats for the ghosts, goblins, and other assorted creatures.

This event is family-friendly and open to the public. So plan on joining us for the food, fellowship, fun and festivities!

.....  
**Why are graveyards so noisy? Because of all the coffin!**

## SAY CHEESE!

As mentioned in last month's issue, we want to welcome all our members by getting to know names and faces. Janeen Otis has graciously agreed to take family photos after church. Each family photo session should take about 10 minutes. A sign up sheet is in the Narthex for three slots each Sunday. Have a favorite family photo you'd like to use instead? Please send a digital copy to us at burkelutheranchurch@att.net, Subject: Photo Directory.

And, over the next few months the Reach Board will be gathering updated mailing addresses, phone numbers, and email addresses from everyone before and after Sunday services.

Let's see those pearly whites :)



# OCTOBER CALENDAR

Sun	Mon	Tue	Wed	Thu	Fri	Sat
		<b>1</b> Quilting, 9am	<b>2</b> Lefse Rolling, 8am Confirmation Class, 6:30pm	<b>3</b> Bible Study, 12:30pm	<b>4</b> Lefse Rolling, 8am	<b>5</b>
<b>6</b> Worship, 9am Sunday School 9am Coffee Hour Choir 10:30am	<b>7</b>	<b>8</b> Quilting, 9am Cardmaking, 1pm Council, 6:30pm	<b>9</b> Lefse Rolling, 8am Men's Breakfast, 9am Joint Choir Practice, 6pm Confirmation, 6:30pm	<b>10</b> Bible Study, 12:30pm	<b>11</b> Lefse Rolling, 8am	<b>12</b>
<b>13</b> Worship w/Joint UCC Choir, 9am Sunday School 9am Coffee Hour Spotlight Ministry	<b>14</b> Fireside Fellows, 6:30-8pm	<b>15</b> Quilting, 9am BLCW Meeting, 10am Birthday Lunch, noon Foundation, 7pm	<b>16</b> Lefse Rolling, 8am Confirmation Class, 6:30pm	<b>17</b> Dorcas Circle, 9am at Lucy's Bible Study, 12:30pm	<b>18</b> Lefse Rolling, 8am River Food Pantry, 4:15-8pm	<b>19</b>
<b>20</b> Worship, 9am Kids in Service Coffee Hour Choir 10:30am	<b>21</b>	<b>22</b>	<b>23</b> Quilting, 9am Confirmation Class, 6:30pm	<b>24</b> Preach Board, 10am Bible Study, 12:30pm	<b>25</b>	<b>26</b>
<b>27</b> Worship, 9am Sunday School 9am Potluck Coffee Hour Trunk or Treat, 5-8pm	<b>28</b> Fireside Fellows, 6:30-8pm	<b>29</b>	<b>30</b> Quilting, 9am Confirmation Class, 6:30pm	<b>31</b> Bible Study, 12:30pm		

Save the Dates:      November 9      Craft/Quilt/Lefse Sale  
                              November 11     Veteran's Day  
                              November 28     Thanksgiving Day  
                              November 29     Black Friday



**Happy Birthday!**

**Have a birthday in October?  
 Hope your birthday is spectacular,  
 totally cool, really fantastic, wonderful,  
 exciting, majorly awesome, fun-filled,  
 rocking and HAPPY!**

**Happy Anniversary!**

**To all who said "I do"  
 in the month of October!**



## OCTOBER WORSHIP LEADERS...

	October 6 9:00am Service	October 13 9:00am Service	October 20 9:00am Service	October 27 9:00am Service
Organist/Pianist	Susie Kittel Moore	Gloria Lundquist	Gloria Lundquist	Susie Kittel Moore
Music Leader	Bob Rittmann	Joint Choir	Bob Rittmann	Dave Wisner
Music Leader	Kathy Sandridge	Joint Choir	Kathy Sandridge	Linda Truitt
Communion	Julie Clark	Bob Rittmann	Confirmation Kids	Jeanette Gehrke
Communion	Pat Graham	Sue Rittmann	Confirmation Kids	Sharon Hughes
Communion Prep	Peri Beal	Jean Schnick	Gloria Lundquist	Mary TeWinkel
Lay Reader	Paul Beckman	Julie Clark	Kids in Service	Tim Wachs
Prayer Readers	Diane Moore Barb Hennings	Jean Schnick Linda Schramer	Kids in Service	Sharon Hughes Bob Boettcher
Acolyte	Carter Truitt	Danni Queiser	Abbey Harris	Aiden Brown
Ushers	Al Klinger Bob Lenzendorf	Roger Kittleson Rick Brandon	Karl & Shari Patzer Kids in Service	Tim Wachs Chris Otis
Greeters	Stuart & Phyllis Svoboda	Jo & Ted Cooper	Kids in Service	John & Linda Schramer
Coffee Hour	Jan Peterson, Kathy Sandridge, Donna Frederick	Quilters	Executive Board	Potluck
Counters	Kim Hanson	Linda Hughes Mary TeWinkel	Patrice Neubert Jan Peterson	Sharon Hughes Kathy Sandridge

### BURKE CONCESSION STAND— NEW COORDINATOR NEEDED!

Since 2012, Burke Lutheran members have been volunteering at local events raising funds for various ministries. These have included UW Football games, Shake the Lake, hockey games, BratFest and many more. Funds have been raised for the Building Fund, Habitat for Humanity, River Food Pantry, Sunshine Place and Road Home.

We need a new Concession Stand Team Coordinator. This person will communicate with Ken Hoffman for events at The Alliant Energy Center and Coliseum and recruit volunteers. They would also work with Peri, our secretary, for promoting opportunities. This effort will not involve UW Football.

If you are interested, or have questions, please feel free to contact Lon Buss (608) 516-7875, or Karl Patzer (608) 770-7325. Lon is willing to help with some orientation and provide the team email list.

### ...CRAFT & BAKE SALE

CONTINUED FROM PAGE 1

**Bakers:** We are in need of your delicious home-made bakery goods. 100% of the money raised from the baked goods will go to the BLCW's kitchen building fund.

The church will be open on Friday from 9am-4pm for you to drop off your baked goods, or you can stop by early Saturday morning. We ask that you do not price them as we will do it to keep like items priced the same.

Any baked items that do not sell on Saturday will be sold Sunday morning. Thank you in advance for participating! Last year we sold out of lefse by 11:00am and baked goods by 3:00pm. Thanks!