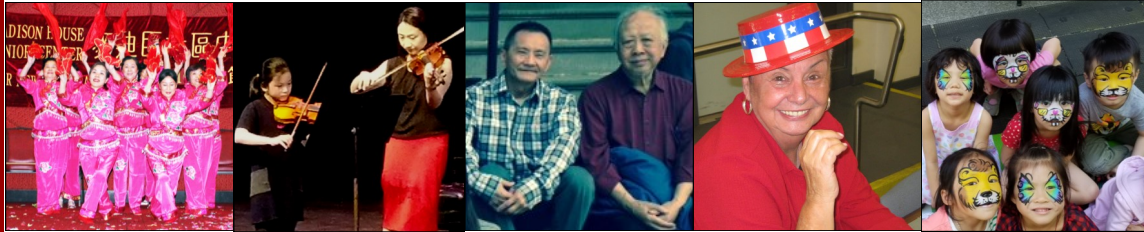


2016
Annual Report



Hamilton-Madison House Services

Behavioral Health

Our Behavioral Health program offers psychological and psychiatric services at two locations on an outpatient basis. Services are provided in Chinese, Korean, Japanese, Vietnamese and Cambodian and offer appropriate assistance to individuals, couples and families working through emotional and behavioral issues. Our treatment centers have become respected field placement and learning sites for graduate students in Art Therapy, Psychology, Social Work, and Mental Health Counseling. We are also an accredited training site for Pre-Doctoral Psychology students by the American Psychological Association.

Childcare and Early Education

We manage numerous childcare centers in the community that offer Head Start programs, as well as daycare and a complete pre-school curriculum for children ages two to five. We have four Early Learn Child Care Centers in the community; 3 locations are Head Start Programs and 1 location services a subsidized child care program and family child care program. We use a standardized curriculum for children aged from 3 months to 5 years old.

Senior Services

For over 60 years, our City Hall Senior Center has been providing seniors with more than a safe environment for healthy aging with nutritious breakfast and lunch. We provide social activities such as Music, Mahjong and Ping-Pong. We offer enrichment classes like Art, English and Computer. We also offer case assistance for housing, crime victim services and immigration counseling. Also located in our center is the Caregiver Services Program which provides comprehensive and integrative services to caregivers and care receivers. The services at our center are provided by our bilingual and bicultural staff.

Youth & Teen Programs

For young people we offer innovative recreational and educational programs that keep them off the street and encourage personal development and healthy relationships. Educational programs include including math and literacy tutoring for ages 6-17, Social Work services and referrals for ages 13-24 and their families, and recreational programs include the Music School, which provides instruction in piano, steel drums, violin, viola, guitar, and voice for ages 4 and up as well as brush painting for ages 6 and up.

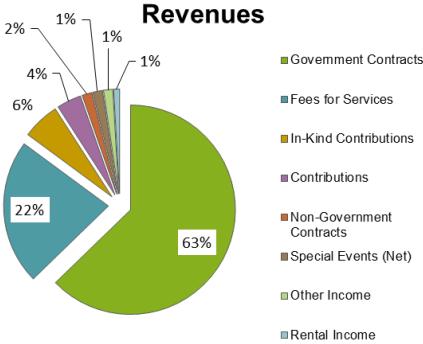
Chinatown Resource Center

The Chinatown Resource Center (CRC) provides case management assistance, benefit and entitlement counseling, translation and referral services to Chinese-speaking immigrants, as well as others. We also offer ESL classes and vocational workshops.

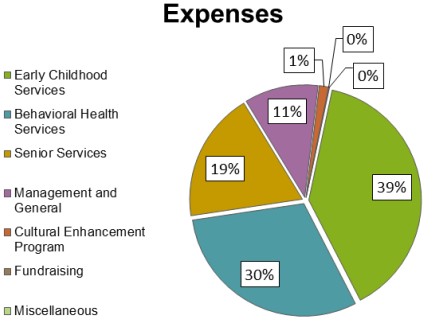
Financial Statement

For the Fiscal Year Ended June 30, 2016

Revenues	
Government Contracts	\$8,097,162
Fees for Services	\$2,891,287
In-Kind Contributions	\$742,419
Contributions	\$487,866
Non-Government Contracts	\$194,221
Special Events (Net)	\$193,211
Other Income	\$184,413
Rental Income	\$117,670
Total Revenues	\$12,908,249



Expenses	
Early Childhood Services	\$4,959,087
Behavioral Health Services	\$3,831,886
Senior Services	\$2,364,213
Management and General	\$1,344,098
Cultural Enhancement Program	\$170,206
Fundraising	\$6,000
Miscellaneous	\$6,847
Total Expenses	\$12,682,337



Hamilton-Madison House Supporters (Corporate, Foundations & Institutions)

353 Flatbush Avenue Associates LLC
 384 Grand Street HDFC
 39 Karaoke Inc.
 40 Mulberry Restaurant, Inc.
 6402 8th Avenue Corp
 AARP NY
 ABM Janitorial Services
 AgeWell New York, LLC
 Aggressive Fire Protection, LLC
 A-IMAGE LLC
 AJIBAN
 AKF Group LLC
 Alex Kelly Music
 AmazonSmile Foundation
 Ambassador Construction Co.
 Ambient Water Treatment Consulting Inc.
 AMERIGROUP Co.
 Approved Oil Co. of Brooklyn, Inc.
 Asian American Federation Of NY, Inc.
 Benjamin Maintenance
 Beyond Designs & Remolding, Inc.
 Bio-Bright NY, LLC
 BRF Aggressive LLC
 Brookbridge Consulting
 Brooklyn Chinese American Association
 Buchbinder Tunick & Company LLP
 C.M.S Electrical Services. Inc.
 Chinese American IPA, Inc.
 Canon Solutions America, Inc.
 CenterLight Healthcare
 Chinatown Manpower Project, Inc.

Chinatown Partnership LDC
 Chinese - American Planning Council
 Chinese Chamber of Commerce of NY Inc.
 Chinese Golden Age Club, Inc.
 Chu & Mui Industries Inc.
 CMS Mid-Atlantic, Inc.
 Columbia Filters Inc.
 Community Action Now
 Comprehensive Health Management
 Con Edison
 Confucius Pharmacy, Inc.
 Cross NY
 Cross-Fire & Security Co. Inc.
 CTBC Bank Corp. (U.S.A.)
 Daketi LLC
 David J. Louie, Inc.
 Diehard Exterminating, Inc.
 Donnelly Mechanical Corp
 East Ocean LLC
 Eastern Security Corp.
 Edelman Sultan Knox Wood Architects LLP
 Ess & Vee Acoustical Contractors, Inc.
 Esther Koven FDN Inc.
 Exude Inc.
 FC Facilitator LLC
 Firecom Inc.
 First American International Bank
 Fordham University
 Galaxy Restaurant & Bar Inc.
 GC Eng Engineers Associates P.C.
 GG Painting Unlimited

Gilbane Building Company
 Global Bank
 Golden Age Club
 Gotham Chemical Corp.
 Greater Houston Community Foundation
 Grenadier Realty Corp.
 HealthFirst PHSP
 Hong Kong Supermarket Of Hester Street Corp.
 Hong Ning Adult Daycare Services Inc.
 Horticultural Creations Inc.
 Hugh O'Kane Electric Company, Inc.
 Humming Business Systems (N.Y.), Inc.
 Hung Chi Foundation, Inc.
 I.U.O.E Local 94-94a-94b, AFL-CIO
 International Blind Contractors, Ltd
 ITOCHU International Inc.
 J & H Equity Group Inc.
 J.P. Phillips, Inc.
 JAD Corporation Of America
 Japanese Medical Society
 John Hung Foundation
 JTC Painting And Decorating Corp
 K & S Industrial Corp
 Kaback Enterprises, Inc.
 Kids For Kids Foundation, Inc.
 King Fook Funeral Services, LLC
 Knickerbocker Village Inc.
 Knight Electrical Services, Corp.
 Kratos/HBE
 KYI Holdings LLC

Hamilton-Madison House Supporters (Corporate, Foundations & Institutions)

L&L Travel Enterprises, Inc.	Po Wing Hong Food Market Inc.	St. John's University
Lin Sing Association, Inc.	Pritchard Industries Inc.	Structure Tone, Inc.
Louis & Anne Abrons FDN, Inc.	Property Advisors	Supreme Building Messengers, Inc.
Lower Manhattan Cultural Council, Inc.	Quality Fire Protection	Technical Systems Integration Inc.
M&S Mechanical	Quality Waste Services Corp.	TEMCO Service Industries, Inc.
Marriott International, Inc.	Qualitiesmoke.com	Total Fire Protection Inc.
Marty and Dorothy Silverman Foundation	R&R Scaffolding Ltd	The Bank Of New York Mellon
Metro Pest Control, Inc.	Regal NY Hotel Management Inc.	The Mitsui USA Foundation
MetroPlus	Research Foundation of CUNY	The New York Community Trust
MG Engineering, D.P.C.	Robert B. Samuels Inc.	The NY Chinatown Rotary Foundation Trust
Modell's II, Inc.	Robert Derector Associates	The Sinotique Group Inc.
Modern Sprinkler Corp	Rochester Midland Corporation	Third Street Music
Museum Of Chinese in America	S.V.B. Associates	Thomas M. Amato Co., Inc.
New Vision W. Consulting Inc.	Salesforce.Org	Titan Industrial Services Corp
New York Asian Women's Center Inc.	Securitas Security Services USA, Inc.	Total Language Inc.
New York Chinese Opera Society, Inc.	Security Control Integrators, Inc.	Toyota Motor North America, Inc.
New York Presbyterian Hospital	Select Express & Logistics	Transfiguration School
New York University	Senior Whole Health-New York	Two Bridges Neighborhood Council, Inc.
Nom Hoy Sun Tuck Association, Inc.	Sigma7 Design Group	U. S. Rilin Corp
Nomura America Foundation	Sigmatex - Lanier Textiles	Unique Signs & Designs Inc.
NYU Community Fund	Signature Relocations LLC	United Healthcare Services Inc.
NYU Langone Medical Center	Silverstein Properties, Inc.	United Jewish Appeal-Federation Of Jewish
NYU School of Medicine's Center	Sing Tao Newspapers New York Ltd.	Philanthropies Of New York, Inc.
Outsource Consultants Inc.	Skidmore, Owings & Merrill LLP	United Neighborhood Houses
Peter F. Poon Architect, P.C.	Skyline Automation	Universal Protection Service, LLC
PHSI AAF-Chung Pak Local Development Corp	SMBC Global Foundation, Inc.	W.H. Christian & Sons Inc.
Platinum Maintenance	Sound Refrigeration & Air Conditioning, Inc.	Wonton Food Inc.
Plymouth Rock Energy LLC	Spanier Building Maintenance	

Hamilton-Madison House Supporters (Individuals)

Innling Ahn	Cambao D Duong	Hong Shing Lee	Portia T. Redfield
Sau Fong Au	Steve Ehrlich	Jan F. Lee	Joseph Ritorto
Ellen K. Banner	Gerald Eisner	Kit Fong C. Lee	Leonard Rubin
Wendy Banner	Kenneth J Eisner	Richard Lee	Nori Sakai
Shammeik Barat	Elisa Espiritu	Sharon Lee	Kana Sasaki
Joanne Bartolomeo	Josiel P. Estrella	Donald Leo	Howard Shild
Maria Borgo	Jorge Fanjul	Lilian Leong	Michael S. Skomsky
Chris Brill-Edwards	Andrea Feirstein	Wynne Leung Kim	Susan C. Song
Selvena Brooks	Dictson Fu	Gloria X. Liang	Wilson Soo
Mario Bussanich	Michael Fung	Wai-Ling Lin	Barbara H. Soong
Chik Wai Chan	Kenneth E. Gilbert	Lillian Ling	Candy Teng
David Chan	Jeffrey Gold	Jenny Low	Debra A. Thompson
Ian Chan	Greg Gong	Joy Luangphaxay	Stella Ting
Spencer Pui-Sum Chan	Thea Goodman	Gary T. Lum	Evan J. Tolson
Sue Chan	Mark Handelman	Christopher Lupino	Nydia Velazquez
Susan S. Chan	Paul Hayes	Sandra C. Malko	Donald W. W. Ng
Feng Chen	Harold Heffner	Francis Manzella	David Wan
Sui Wai Cheung	Lawrence Hellenberg	Frank P. Marino	Peter Wang
Ed Chin	Julie Hoffman	Amy Matsuda	Geoffrey, Jr. Wiener
Fanny Chin	J. J. Hung	Fay Matsuda	Geoffrey, Sr. Wiener
Jeanie Chin	Sam Jen	Maureen,Fritch	Jeanine Wong
Jennifer Chin	Richard Joe	Michael Modica	Santi Wong
Margaret S. Chin	Tomoko Kaichi	Denis Monaghan	Ming Xiong
Norene Chin	Chet Kaplan	Elizabeth Monterrosa	Anne Yang
Lisa Ching	William Kremer	Sherman M. Ng	Daryl Yee
Isabel Ching-Kong	Paul A. Kurzman	Jeffrey K. Oing	Frank Yee
Chia En Chiu	Michael Kwon	Christopher O'Nieal	Peter Yee
Kimme Chiu	Susie Shuxia Lam	Osborne, Thomas	Jennifer M. Yip
Cassandra Cho	Thomas K. Lau	Kenshiro Oshima	Ed Young
Grant T. Chu	Jin Hung Law	Frank A. Oswald	Chung H. Yu
Marjorie H. Chung	Linnit Lawton	Eric K. Petschek	Daniel M. Yu
Anthony Cucchiara	Don Lee	David Pollak	Patrick Yu
Lisa David	Eric Lee	Louis Quitoni	

Board of Directors

Chi K. Chu
Chairperson

Anthony Giorgio
President

Nicholas R. Caiazzo, Esq.
Jan Lee
Victor J. Papa
Paul A. Kurzman
Geoffrey R. Wiener, Jr.
Vice Presidents

Wynne Leung Kim
Secretary

Kenneth Eisner
Treasurer

Yoshio Kano
James Halpin
Thomas Hill
May Liang
Paul McNulty
Cao K. O
Debra Thompson
Sue Tse
Directors

Joseph P. Ritorto, Emeritus

Isabel Ching
Executive Director