

Distributed by:

WATER CONTROLS
& PUMP SYSTEMS
808-876-0132
www.watercontrols.com

ALL THE PERFORMANCE OF A WATERTRONICS PUMP STATION IN THE WATERMAX PACKAGE

Setting the standard for 25 years, the WaterMax Series provides a complete line of self-enclosed pumping systems for commercial landscape and turf irrigation. Watertronics' proprietary control software combines with VFD technology to provide highly efficient, precision pumping in a durable, compact design.

PRECISE PRESSURE REGULATION

WaterMax 9000 Pumping Systems are pre-fabricated, self-contained and incorporate the latest VFD technology to provide smooth, accurate, surge-free and energy efficient performance at varying flow rates. Whether your water source is a lake, pond, or a boosted city supply. It is ideally suited for a large commercial or golf course application. The 9000 can provide the water and constant pressure desired up to 1000 GPM or 140 PSI.

ADVANCED MONITORING AND CONTROLS

The 9000 control platform options include an industrial grade Programmable Logic Controller with a highly intuitive color touchscreen interface. Take your controls to the next level with Watervision 6 remote monitoring technology and access your pump station from any web-enabled device, anytime.

BUILT TO WITHSTAND THE TEST OF TIME AND TOUGH CONDITIONS

A multi-step coating system of metal preparation, rust-inhibitive baked epoxy primecoat and a two-part UV-resistant baked polyurethane finish produces a long-lasting, durable, and rust-free product.

DYNAMIC FACTORY TESTING

Every WaterMax system is fully performance tested at field conditions prior to shipment to ensure your pump will perform exactly as promised. All WaterMax Products carry a 1 year limited warranty against defects in materials and workmanship.



- WaterMax 9000 can be customized to exactly meet your requirements through a broad range of options
 - Energy-efficient VFD system provides a surge-free soft start
 - Pump Service Network (PSN) provides nationwide technical service for installation, start-up, user training and maintenance
-
- For suction lift, boost or flooded intake applications
 - Flows up to 1000 GPM
 - Combined motor sizes up to 105 HP @ 480V 3 phase
(maximum identical duplex pumps = 2x50 HP)
 - Voltage options 208/3 phase - 240/1 phase - 240/3 phase - 480/3 phase

www.watertronics.com

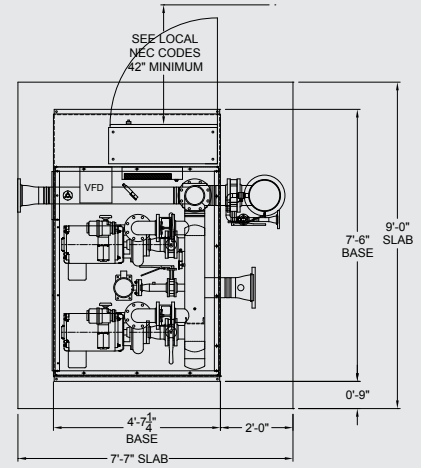
262.367.5000 | 800-356-6686

STANDARD FEATURES AND BENEFITS

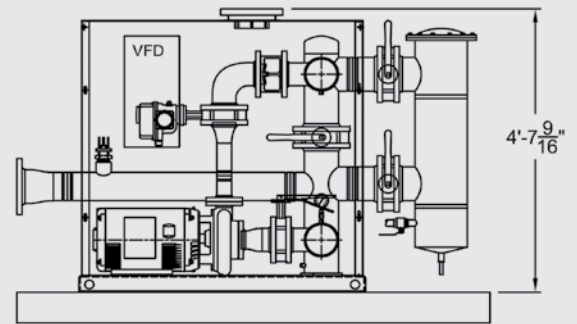
- Watertronics proprietary PLC-based software
- Color touchscreen operator interface with full color STN Active Matrix
- Alarms:
 - Low pressure shutdown
 - High pressure shutdown
 - VFD fault shutdown (VFD station only)
 - High pump temperature shutdown
 - Phase loss (3 phase only)
- Automatic reset and time stamping of all alarms
- Lightning protection
- VFD pressure regulation with surge-free soft starting
- Pressure drop starting
- Stainless steel pressure transducer
- Flow sensor
- Dead-front NEMA 4 service rated main disconnect panel
- U.L. listed control panel
- Pump construction features a bronze impeller and a cast iron volute with back pull out design
- Discharge isolation valve
- Priming port for suction lift application
- Positive prime assembly for suction lift application
- Stainless steel base and forced air cooled, lockable aluminium enclosure (unpainted is standard)
- Industrial grade pipe coating system

AVAILABLE OPTIONS

- Suction & Discharge drop pipes
- Floating intake suction pipe assembly with foot valve
- Intake suction pipe with screen and vacuum pump assembly (eliminates the need for a foot valve)
- Medium Green or Sandstone color option
- Thermostatically controlled enclosure heater
- Vandal resistant alarm light
- Internal sound dampening insulation
- Magflo electromagnetic flow meter
- Suction scanner filtration
- Back flow preventer (available some models)
- Watervision 6 remote monitoring software
- Programmable setpoint lake/pond level controls
- Electronic Butterfly Valve (EBV) back up pressure regulating in the event of a VFD failure
- Evolution Series: VFD jockey pump with EBV main pump
- Submersible turbine pumps
- Vertical turbine pumps (maximum identical duplex pumps = 30 HP)
- Stainless steel fasteners

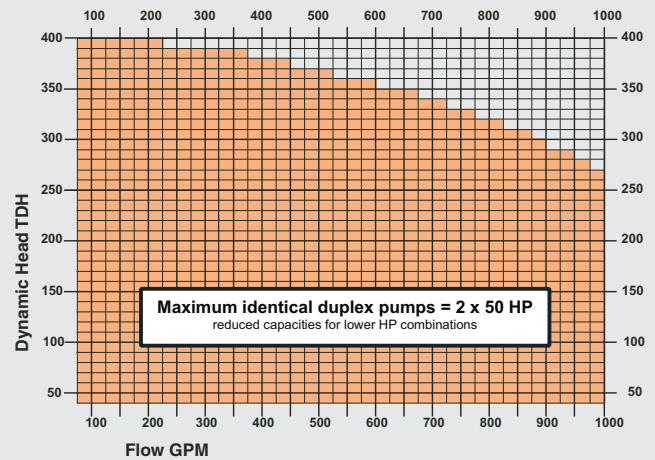


TOP VIEW



SIDE VIEW

9000 PUMP STATION PERFORMANCE CHART



Performance indicated includes 4 PSI station losses



Lean, Clean and Green. Lindsay Corporation is committed to developing environmental awareness and implementing sustainable practices to reduce the use of and protect energy, water, and all other resources.



© 2013 Lindsay. All rights reserved. Watertronics and FieldNET are registered trademarks of the Lindsay Corporation. NFPA 70® and National Electric Code® are registered trademarks of NFPA.



1-800-356-6686 • www.watertronics.com
INT'L (+1) 262-367-5000

WA PRODUCT BRO 2013-6