



Sealing Solutions

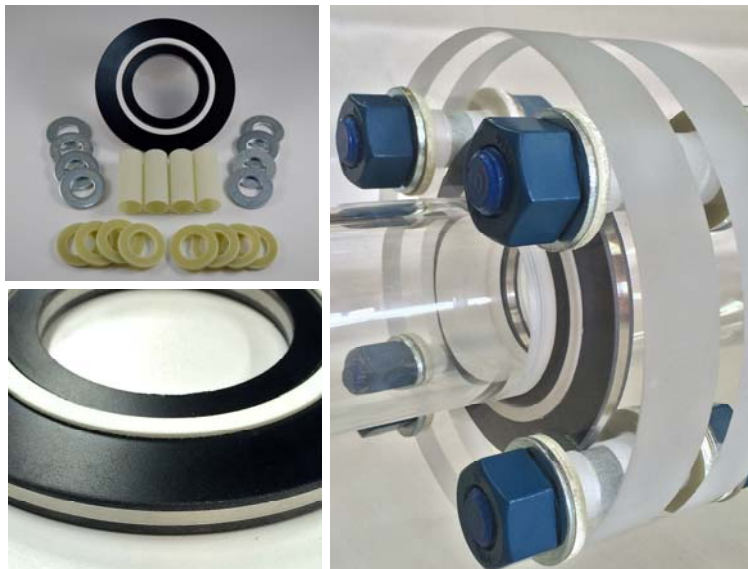
RAMCORE CS FLANGE INSULATION GASKET KIT

Ramco® Sealing Solutions manufactures the **RAMCORE CS** Gasket Kit for Critical Service applications, under continuous back and forth movement, or internal pressure surges at elevated temperatures.

The **RAMCORE CS** gasket is manufactured from 1/8" thick Nema grade G-10 glass epoxy material bonded to a 316 Stainless Steel Internal core with a Spring Energized PTFE Sealing element to prevent cold flow under extreme pressures. This design makes the **RAMCORE CS** Gasket ideal for API 15,000# and ANSI 600, 900, 1500 and 2500# flange applications.

The **RAMCORE CS** Flange Insulation Gasket Kit consists of all components necessary to isolate a flange providing proper flange sealing and cathodic protection. Each Isolation Kit comes standard with one RAMCORE CS Gasket as well as two isolating Nema grade G-10 washers, two SAE zinc plated steel backup washers and one Nema grade G-10 sleeve tube for every bolt.

The **RAMCORE CS** is available for all sizes and International piping classifications.



Ramco® Sealing Solutions products are proudly manufactured in the USA and are fabricated from the highest quality materials to exceed industry standards.



Ramco® Sealing Solutions
4103R ½ Cameron St., Lafayette, LA 70503
337-706-8711 p 337-706-8713 f
info@ramcosealing.glacoxmail.com

Division of RAMCO® Manufacturing Company Inc.



RAMCORE CS / MESC SPE 85/300 Shell Testing Results

Description	Test Method	RAMCORE CS Value
Compression Test Ambient temp	EN 13555 @ 25° C (77° F)	200 Mpa (29,007 PSI) Gasket Stress
Compression Test Elevated Temp	EN 13555 @ 165° C (329° F)	80 Mpa (11,603 PSI) Gasket Stress
Creep Relaxation Test Ambient Temp	EN 13555 @ 25° C (77° F)	.94 Relaxation Factor
Creep Relaxation Test Elevated Temp	EN 13555 @ 165° C (329° F)	.13 Relaxation Factor
Leakage Test Ambient Temp	EN 13555 51 Bar Helium @ 30.7 Mpa Gasket Stress	1.20E-08 Pa-m ³ /s/mm Leakage Rate
Leakage Test Elevated Temp	EN13555 45 Bar Helium @ 30.7 Mpa Gasket Stress	3.80E-10 Pa-m ³ /s/mm Leakage Rate
Hot Blowout Test	HOBT - 165° C (329°F)@ 100 Bar (1450 PSI)	No Blowout
Cycle Test Elevated Temp	HOBT - 163° C (325° F)@ 45 Bar (653 PSI)	<0.1 Bar(1.45 PSI) Pressure Loss

Test Procedure: Shell Specification MESC SPE 85/300 (dated September 2012)
Test report A 300 130 1/- 24.04.2015

Ramco® Sealing Solutions
4103R ½ Cameron St., Lafayette, LA 70503
337-706-8711 p **337-706-8713 f**
info@ramcosealing.glacoxmail.com

Division of RAMCO® Manufacturing Company Inc.