

Match Book



2017 USPSA
Cheely Custom Gunworks
Spencer Race Guns
Michigan Sectional Championship
at Brooklyn, MI
August 4 – 6, 2017



Match Title Sponsors



A portion of each entry fee is also being donated to the Boy Scouts of America



PRIZE RAFFLE GUN

40 caliber - Limited Gun

Cheely Custom Gunworks & Spencer Race Guns



From The Michigan Section Coordinator

Welcome to the 2017 USPSA Michigan Sectional Championship!

Brooklyn Sportsman's Club is again proud and honored to be able to host this event! We are proud of our club, and we have come up with 10 fun and challenging stages that we hope you will enjoy. We have some smaller 26 round quick stages, along with a 42 round field course. We hope you enjoy this mix of speed, accuracy and endurance.

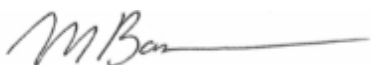
We are also excited to be offering the shooters the opportunity to try their hand at Pistol Caliber Carbine (PCC). This should add an interesting dimension to the division line up.

This year we will be donating a large portion of each entry fee to the Boy Scouts of America. Boy Scout Troop 472 (Napoleon, MI) will be coordinating and hosting many Troops and Scouts from Southern Michigan to help us at the match! We expect to have 30 scouts helping paste and reset your targets. When you see them at the match, please thank them for their work and efforts to help make this event successful. We are proud to donate to these young scouts and future leaders!

Please take the time thank the companies and vendors who donated prizes and other merchandise to this match. Go to their web sites and let them you that you saw their products and banners here today. Reach out and thank them for their support! Please consider their products and services when making your next purchase, since they always step up to show their support. Taking the time to thank them will encourage their future participation in these matches.

Please, please extend your thanks to the RO's, CRO's, staff, and all the workers who have donated countless hours to make this match happen. It is because of a few people's tremendous efforts that this is even possible.

Good luck and enjoy the match!



Mike Barrera
USPSA Michigan Section Coordinator

Match Sponsors

TITLE Level Sponsors



Cheely Custom Gunworks provides premier custom guns and is a manufacturer 1911 / 2011 gun parts.

Check them out at: <http://www.ccgunworks.com>



Spencer Race Guns builds awesome custom competition guns for USPSA, IDPA and 3-Gun.

Check out the line up at <http://www.spencerraceguns.com/home.html>

PLATINUM Level Sponsors



Leapers manufactures a wide range of innovative and technologically advanced shooting sport oriented products across a multitude of different platforms.

The complete lineup of their products can be seen at: <http://www.leapers.com>



Springfield Armory will be providing several prize guns - including a 1911 Range Officer in 45, a XDM 9mm 5.25" Competition Edition, and 6 additional prize guns.

Too many great products to list - so see them at: <http://www.springfield-armory.com>

Match Sponsors

PLATINUM Level Sponsors



Shooter's Connection is one of the premier shooting supply companies in the US.

They have been serving USPSA / IPSC / IDPA shooters for many years and offer great service and support.

<http://www.shootersconnectionstore.com>



Alpha Dynamics has donated 2 x CED M2 Chronographs as well as many CED/DAA Range Packs, timers and many other prizes.

Many shooters and workers are going to be very happy and be thankful for great supporters like Alpha Dynamics. Be sure to support them as they support us!

<https://www.doublealpha.biz>

SILVER Level Sponsor



Starline is a family owned business and prides itself on producing the highest quality brass case available. With a production process focused on quality not quantity, Starline makes the finest brass and has for more than 40 years.

Check them out at <https://www.starlinebrass.com>

Match Sponsors

BRONZE Level Sponsor



The perfect paint for steel targets. Steel Target Paint covers surfaces quickly and dries fast! This unique, water-based formula protects steel targets from rust and oxidation.

Steel Target Paint was designed for shooting ranges, shooting clubs, parks and private ranges and for match competition.

<https://www.rangestore.net>

Range Briefing

(Elements of briefing taken from 2014 Area 6 matchbook)

COLD RANGE

Brooklyn Sportsman's Club is a cold range. Do not handle firearms except in designated SAFE AREAS or under the direct supervision of a designated Range Officer. Handling firearms in parking areas is deemed unsafe gun handling.

SAFE AREAS

Safe areas are located around the range to bag, unbag, holster or unholster firearms (and also for dry fire practice and gun repair, etc.) No ammunition may be handled in any safe area. Safe areas will have a 'foot-fault' box immediately behind the table area in which you must stand to be considered in the safe area.

MATCH RULES

The match rules are found in the USPSA Practical Shooting Handbook, Current Edition.

RANGE OFFICERS

RO's are here to assist you in completing a safe shooting contest. If your gun handling has become unsafe, you will be stopped. When you hear STOP!, STOP with the gun muzzle pointing safely down range, finger outside the trigger guard, safety on, and await further instructions.

SET STEEL & PASTE TARGETS

Competitors are expected to stay together as a squad, and if requested, to tape, set steel, and help maintain efficiency on each stage.

LOST BRASS

As a matter of efficiency, all brass collected from the Brooklyn Sportsman's Club range is collected by the range officers at the conclusion of the match in consideration for their hard work.

ALCOHOL

Alcohol and recreational drugs may not be consumed anywhere on the range. Competitors violating this policy will be disqualified and asked to leave the range.

SCHEDULING

Competitors must compete for score according to the published match and squadding schedule. A competitor who is not present at the scheduled time and date for any stage may not attempt that stage without the prior approval of the Match Director, failing which the competitor's score for that stage will be zero. (6.5.1). Occasionally, stages will clear squads early. If your entire squad is available and the CRO approves, the squad will be allowed to shoot ahead of schedule only on the scheduled date.

Range Briefing

(Elements of briefing taken from 2014 Area 6 matchbook)

STAGE BRIEFINGS AND INSPECTIONS

When the entire squad is assembled at the scheduled time, a brief stage walk-through will be given, followed by a 5 minute inspection and question period. Shooters at their scheduled stage may negotiate obstacles only during the five-minute inspection period. The on-deck competitor only may additionally negotiate obstacles while the previous competitor's targets are being scored. Early inspection of a stage is permitted by competitors only if a squad is not currently on the course of fire or getting ready to begin it. Do not operate any of the moving targets or props that activate such movers. If the RO staff is present on a stage, please extend to them the professional courtesy of asking before inspecting the course of fire.

RANGE ACCESS.

The range is closed to all regular competitors prior to the scheduled match August 4th 2017, and daily after 7:00 p.m. (Friday competitors who check in Thursday afternoon may inspect the stages at that time.)

SHOOTER READINESS

When called to the line, competitors are expected to be ready to load and make ready quickly. Shooters not ready within a half-minute prep time may be asked to move aside for the next competitor. If the shooter shows up without their gun or gear when their name is called, they go to the bottom of the shooting order.

HAZARD AREAS

Safety flagging will identify areas beyond which competitors and spectators are prohibited for safety reasons.

EYE & EAR PROTECTION

All competitors must wear eye and ear protection while on the line. Eye protection is required to be worn by everyone while on the range.

D.Q. POLICY

Violation of safety and sportsmanship rules anywhere on the Brooklyn Sportsman's Club facility will result in match disqualification. This applies to vendor areas, the clubhouse, as well as the match stages.

CHRONOGRAPH

Shooters will report to the chronograph station immediately after shooting and signing their score sheet for Stage 6 (on Bay 6). A RO from Bay 6 (or an RO from chronograph) will escort the shooter to the chronograph station in order to make the process flow efficiently.

Range Briefing

(Elements of briefing taken from 2014 Area 6 matchbook)

IMPENETRABLE OBJECTS

All targets, no-shoots, vision barriers, and hard cover zones are impenetrable to a full bullet diameter. Bullets holes that are partially or fully in the non-scoring border will score according to the circumstance. "Unless specifically described as 'soft cover' in the written stage briefing, all props, walls, barriers, vision screens and other obstacles are deemed to be impenetrable 'hard cover'." (9.1.6).

METAL TARGET CALIBRATION

If a steel target has failed to fall and appears to be out of calibration, challenge it during the scoring. It will be checked and if re-calibrated, a reshoot is required for that stage. If a popper has been shot down, it is asserted to be calibrated. The calibration ammunition, as fired through each designated handgun, is chronographed to a power factor between 115.0 and 125.0.

HANDICAPPED SHOOTERS

Competitors may request a penalty in lieu of the stated course requirements by reason of incapacity of previous injury. This must be requested prior to shooting the stage. The Range Master or the CRO only will accept any such requests and the RM will make the decision as to what penalty will apply.

MATCH SCORING

The match will use the USPSA Scoring Program EzWin- Score, latest version, for official match results. PractiScore will be used for electronic collection of competitor scores. After the competitor has completed a stage, a written summary of the score will be provided. This will be the official score card, and will be dated and signed by the competitor and the range officer. Competitor classifications will be updated prior to commencement of the match with the latest available downloadable data from the USPSA website. Match results will be posted at various times during the match and after the match is concluded. Final official results will be posted to the uspsa.org website.

If there are scoring questions, first check your math, including power factor. If there is still a scoring question, take your score card copy to the clubhouse, or bring it to the attention of the Match Director.

ARBITRATION

Arbitrations are initiated with the presentation of a \$100 cash fee and the completed arbitration form delivered to the Match Director or Range Master within one hour of the incident. Forms are available at each stage or from the clubhouse.

Appeals will not be accepted after the one-hour filing time has lapsed. Please read and comply with the provisions of Chapter 11 in the USPSA Handgun rulebook before filing.

Range Briefing

(Elements of briefing taken from 2014 Area 6 matchbook)

COMPETITOR AGREEMENT

By competing in this event, you attest that you have read, you understand and you agree to comply with the match rules and regulations.

COURSE OF FIRE - DRAWINGS & DIMENSIONS

Drawings and dimensions shown in this match book are approximate and may change due to safety or production considerations. There may be additional no-shoots, vision barriers, or other changes. Inspect each stage carefully and listen to the squad briefing.

RANGE FACILITIES

Rest Rooms

Portable toilets are located conveniently around the range.

Food Service

Water is available on the range during match hours. Lunch will be served at clubhouse and is available for an additional fee (and is not included in the match fee). After the squad is finished shooting the 5th stage of the day, the squad will be shuttled up to the club house for lunch. The shuttle service will take them back to the range.

Parking

Competitors may park free in designated parking areas. There is no parking on the range roads. GUN HANDLING IN THE PARKING AREA IS PROHIBITED.

Spectators

Everyone must wear eye and ear protection while on the range. Climbing on berms is not allowed. Children must be under the direct supervision of a parent.

Exhibits

The USPSA Michigan Sectional Exhibits will primarily be at the clubhouse, and will feature many several suppliers to our sport. Only Sponsors of the Championship and invited vendors are allowed display areas in the clubhouse (or on the range). Please acknowledge and thank them for their generous support.

Pistol Bays

There two main ranges – the “events range” (bays 1-10) and the “pistol ranges” (bays 11 – 16). For this event we will be using only the “events range” (bays 1-10).

Awards / Trophies



2017 USPSA Michigan Sectional Awards

- Awards will consist of trophies only.
- **Only classified shooters are eligible for class or category awards.**
- **Unclassified shooters are eligible for Division Champion only.**

Trophies

- **By Division** - must have 5 competitors to recognize a division
 - Division Champion
- **By Class** – division status must be met
 - 1st in class: GM through D (each class with minimum of 5 shooters)
 - 2nd in class: GM through D (each class with minimum of 10 shooters)
 - 3rd in class: GM through D (each class with minimum of 15 shooters)
 - 4th in class: GM through D (each class with minimum of 20 shooters)
- **By Category** – division status must be met, must have a minimum of 5 per category
 - High Lady
 - High Super Senior
 - High Senior
 - High Junior
 - High Military
 - High Law Enforcement

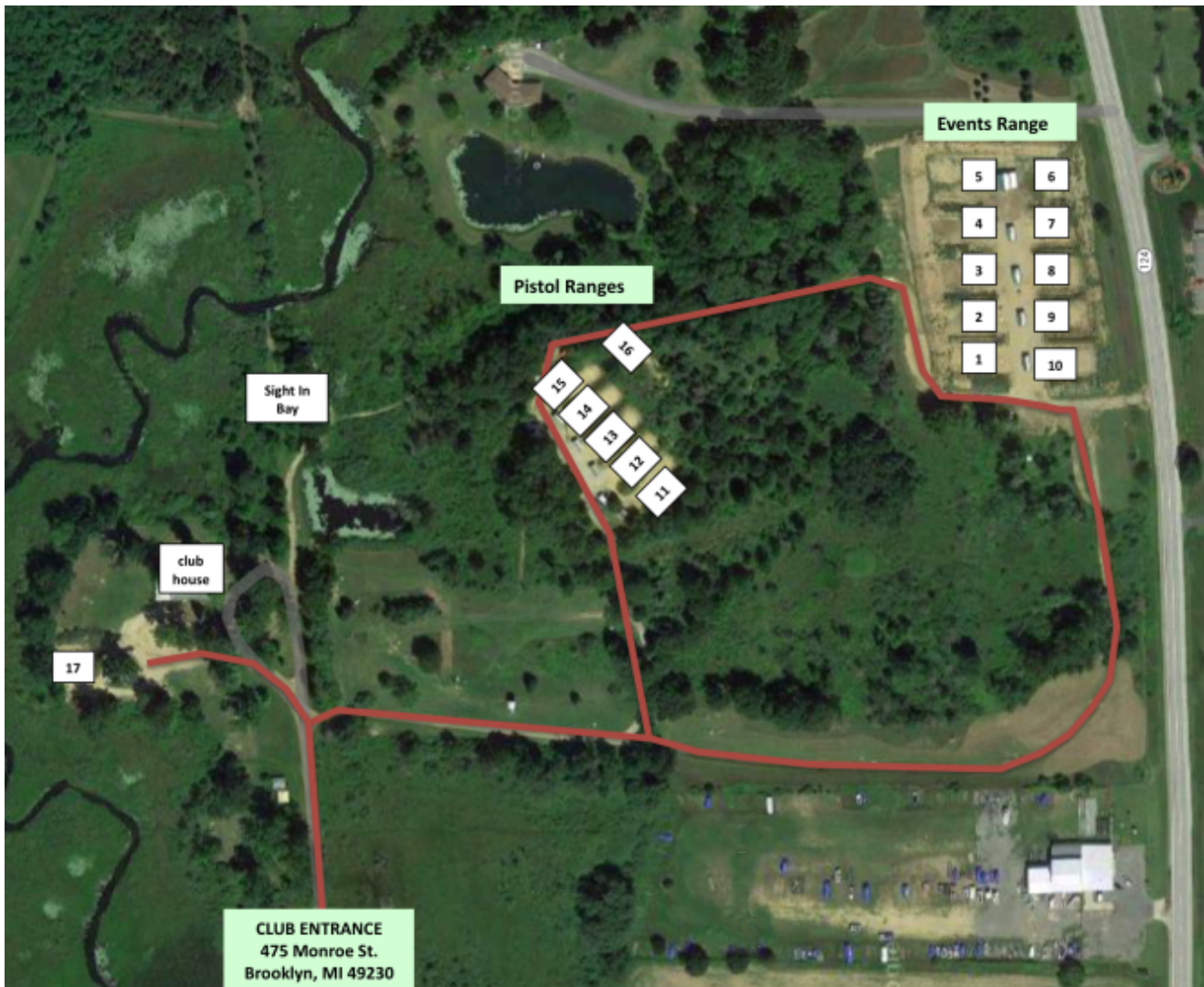
Match Location

Brooklyn Sportsman's Club

475 Monroe Street

Brooklyn, MI 49230

GPS cords: N. 42.06.137 W. 084.14.407



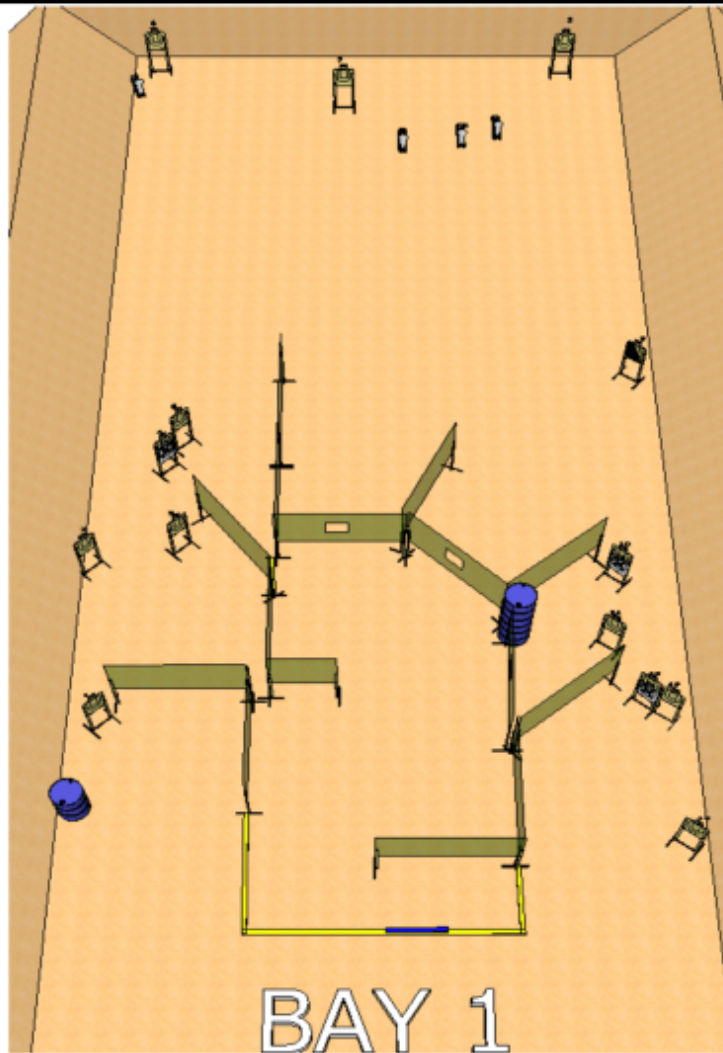
Stage 1 – Bay 1

Twist and Shout

RULES: USPSA Rule Book, Current Edition **COURSE DESIGNER:** Walt Paegel TY72961

START POSITION:	PISTOL:	Feet touching mark. Handgun is loaded and holstered as per rule book.
	PCC:	Feet touching mark. Both hands holding gun. Stock at belt level, muzzle pointing at barrel. Loaded and in ready condition per PCC rules.

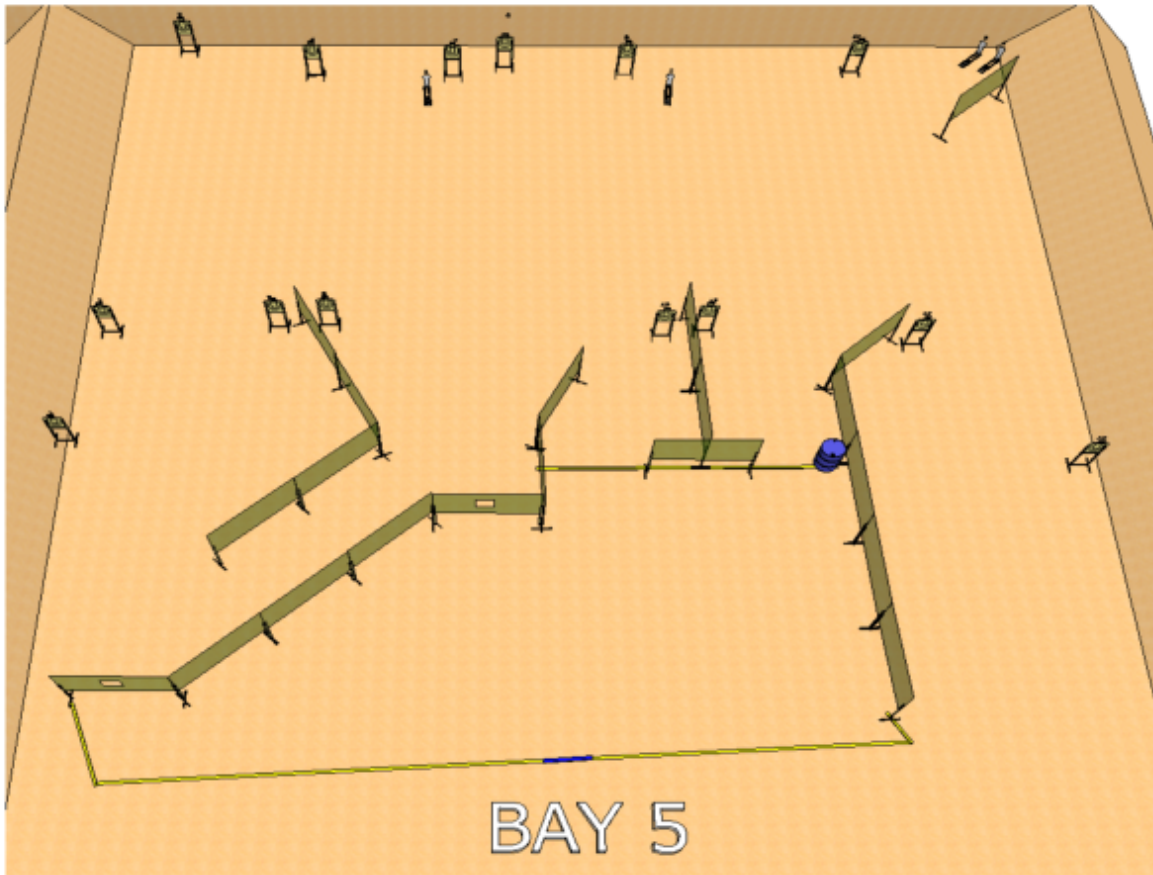
STAGE PROCEDURE	SCORING
At start signal, engage targets as visible from within the shooting area.	SCORING: COMSTOCK, 32 rounds 160 points
	TARGETS: 14 metric - 4 classic poppers
	SCORED HITS: Best 2 on Paper - Steel must fall to score.
	START-STOP: Audible - Last shot
	PENALTIES: Per current edition of USPSA Rule Book.



Stage Notes:	RO Notes: Maintain target and prop position integrity throughout the match.
---------------------	--

Stage 5 – Bay 5

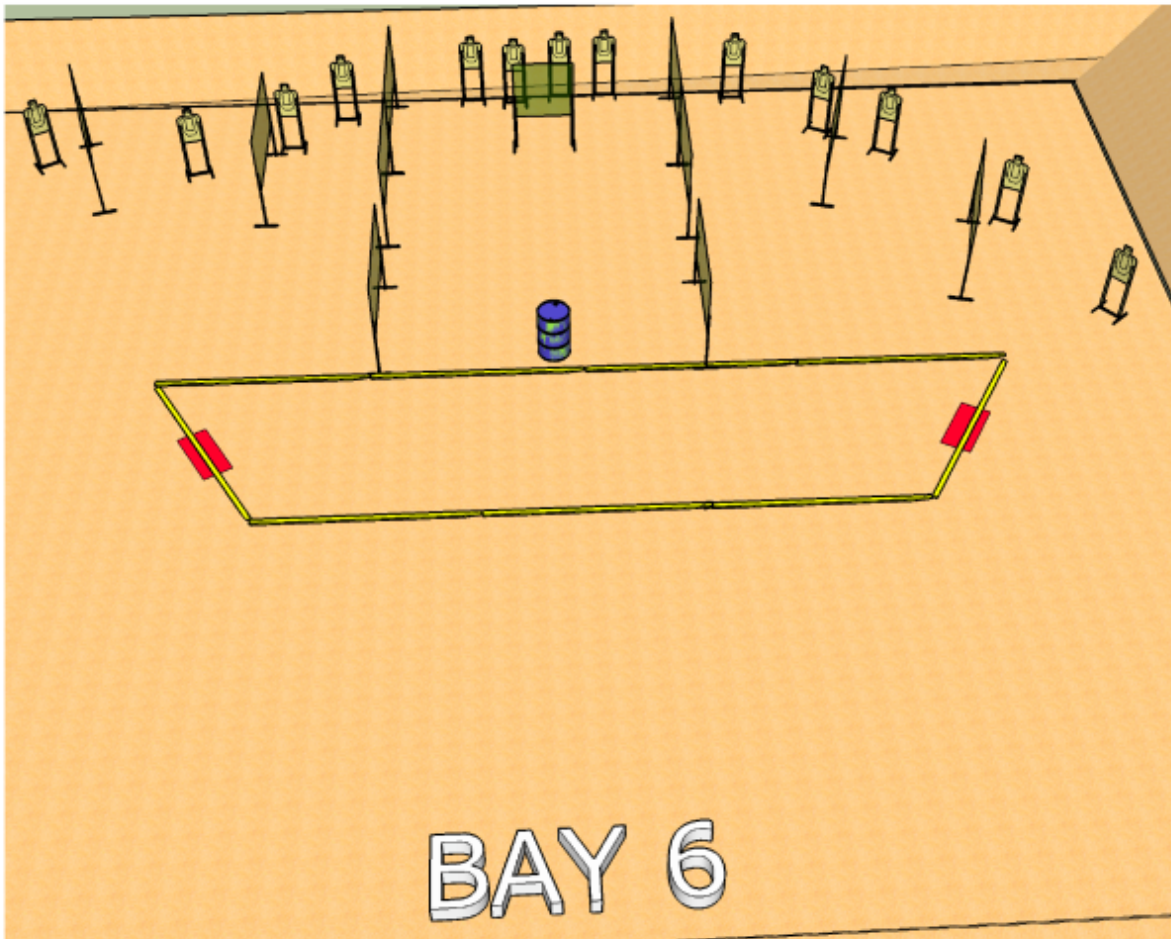
JayHawks													
RULES: USPSA Rule Book, Current Edition													
COURSE DESIGNER: Walt Paegel TY72961													
START POSITION:	PISTOL: Feet touching mark. Handgun is loaded and holstered as per rule book.												
	PCC: Feet touching mark. Both hands holding gun. Stock at belt level, muzzle pointing at barrel. Loaded and in ready condition per PCC rules.												
<table border="1"> <thead> <tr> <th>STAGE PROCEDURE</th> <th>SCORING</th> </tr> </thead> <tbody> <tr> <td>At start signal, engage targets as visible from within the shooting area.</td> <td>SCORING: COMSTOCK, 32 rounds 160 points</td> </tr> <tr> <td></td> <td>TARGETS: 15 Metric and 4 mini classic Poppers</td> </tr> <tr> <td></td> <td>SCORED HITS: Best 2 on Paper, Steel must fall to score.</td> </tr> <tr> <td></td> <td>START-STOP: Audible - Last shot</td> </tr> <tr> <td></td> <td>PENALTIES: Per current edition of USPSA Rule Book.</td> </tr> </tbody> </table>		STAGE PROCEDURE	SCORING	At start signal, engage targets as visible from within the shooting area.	SCORING: COMSTOCK, 32 rounds 160 points		TARGETS: 15 Metric and 4 mini classic Poppers		SCORED HITS: Best 2 on Paper, Steel must fall to score.		START-STOP: Audible - Last shot		PENALTIES: Per current edition of USPSA Rule Book.
STAGE PROCEDURE	SCORING												
At start signal, engage targets as visible from within the shooting area.	SCORING: COMSTOCK, 32 rounds 160 points												
	TARGETS: 15 Metric and 4 mini classic Poppers												
	SCORED HITS: Best 2 on Paper, Steel must fall to score.												
	START-STOP: Audible - Last shot												
	PENALTIES: Per current edition of USPSA Rule Book.												



Stage Notes:	RO Notes: Maintain target and prop position integrity throughout the match.
---------------------	--

Stage 6 – Bay 6

		HyperSpeed	
RULES:		USPSA Rule Book, Current Edition	COURSE DESIGNER: Mike Barrera B46
START POSITION:	PISTOL:	Feet touching mark. Handgun is loaded and holstered as per rule book.	
	PCC:	Feet touching mark. Both hands holding gun. Stock at belt level, muzzle pointing at barrel. Loaded and in ready condition per PCC rules.	
STAGE PROCEDURE		SCORING	
At start signal, engage targets as visible from within the shooting area.		SCORING:	COMSTOCK, 26 rounds 130 points
		TARGETS:	13 metric
		SCORED HITS:	Best 2 on Paper
		START-STOP:	Audible - Last shot
		PENALTIES:	Per current edition of USPSA Rule Book.

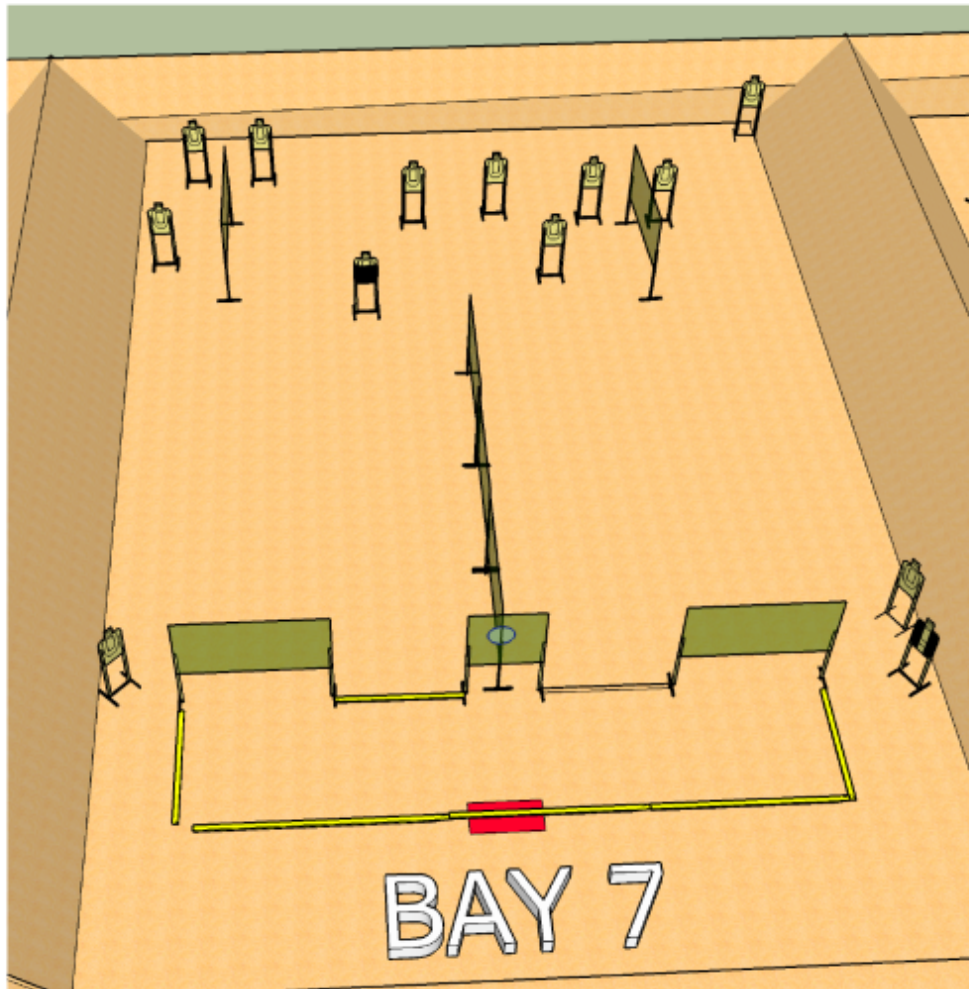


Stage Notes:	RO Notes: Maintain target and prop position integrity throughout the match.
---------------------	--

Stage 7 – Bay 7

Better to Move

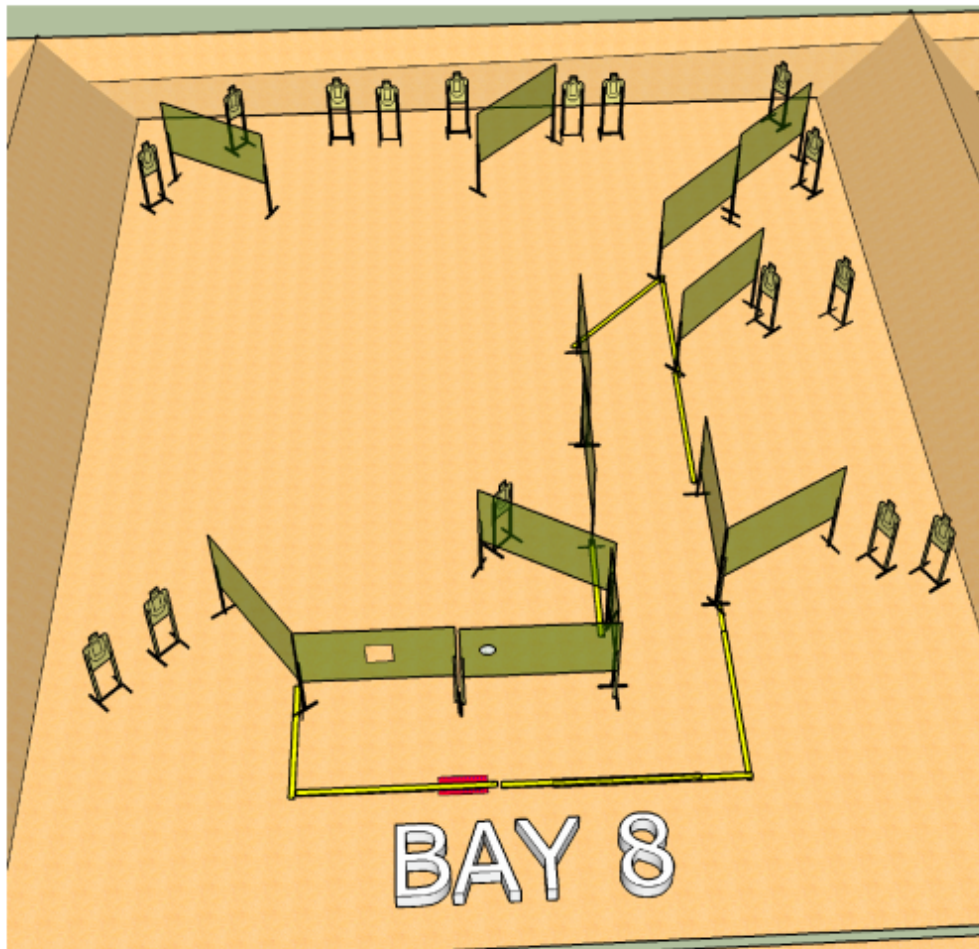
RULES: USPSA Rule Book, Current Edition		COURSE DESIGNER: Mike Barrera B46	
START POSITION:	PISTOL:	Feet touching mark. Handgun is loaded and holstered as per rule book.	
	PCC:	Feet touching mark. Both hands holding gun. Stock at belt level, muzzle pointing at mark. Loaded and in ready condition per PCC rules.	
STAGE PROCEDURE		SCORING	
At start signal, engage targets as visible from within the shooting area.		SCORING:	COMSTOCK, 26 rounds 130 points
		TARGETS:	13 metric
		SCORED HITS:	Best 2 on Paper
		START-STOP:	Audible - Last shot
		PENALTIES:	Per current edition of USPSA Rule Book.



Stage Notes:	RO Notes: Maintain target and prop position integrity throughout the match.
---------------------	--

Stage 8 – Bay 8

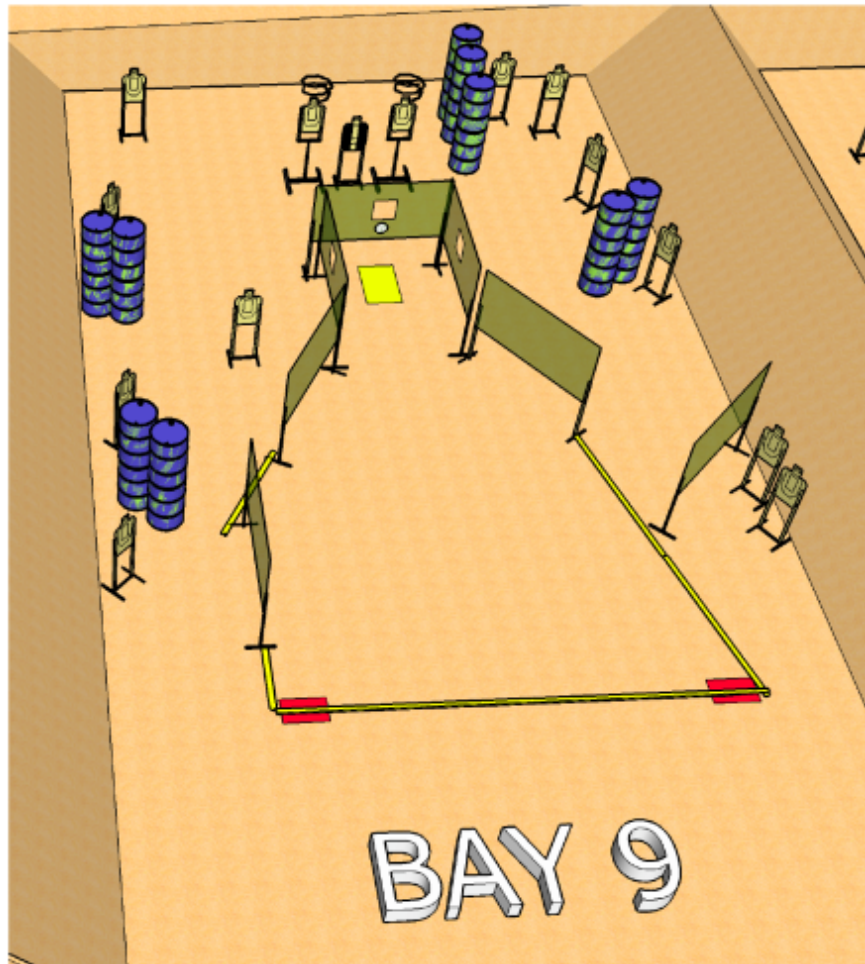
A Hard Left		
RULES:	USPSA Rule Book, Current Edition	
	COURSE DESIGNER:	Mike Barrera B46
START POSITION:	PISTOL:	Feet touching mark. Handgun is loaded and holstered as per rule book.
	PCC:	Feet touching mark. Both hands holding gun. Stock at belt level, muzzle pointing at mark. Loaded and in ready condition per PCC rules.
STAGE PROCEDURE		SCORING
At start signal, engage targets as visible from within the shooting area.		SCORING: COMSTOCK, 32 rounds 160 points
		TARGETS: 16 metric
		SCORED HITS: Best 2 on Paper
		START-STOP: Audible - Last shot
		PENALTIES: Per current edition of USPSA Rule Book.



Stage Notes:	RO Notes: Maintain target and prop position integrity throughout the match.
---------------------	--

Stage 9 – Bay 9

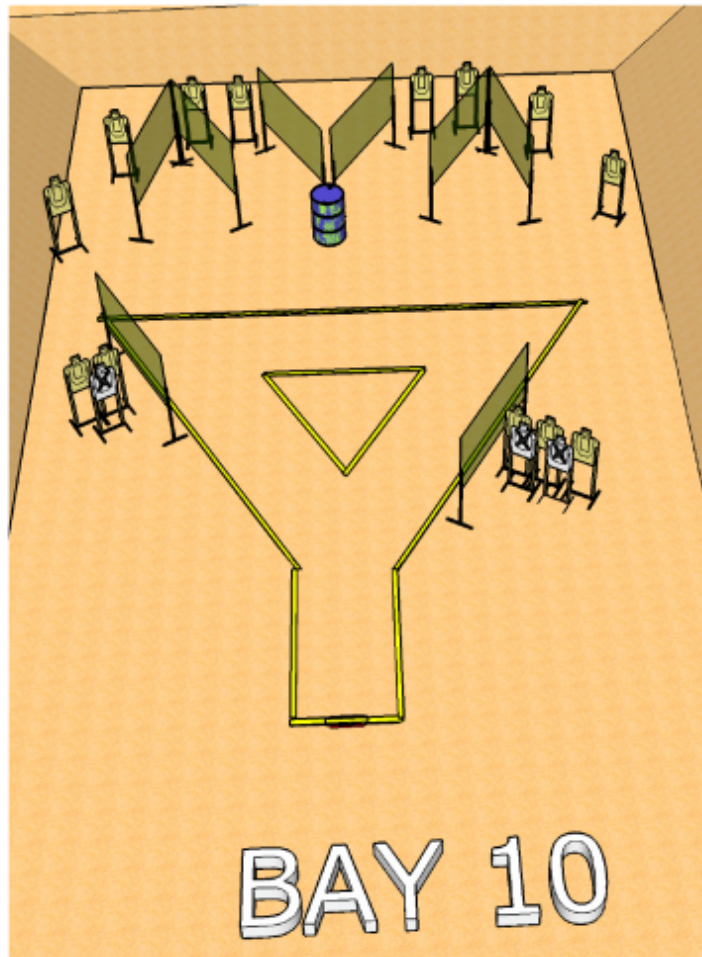
Double Twister		
RULES:	USPSA Rule Book, Current Edition	
	COURSE DESIGNER:	Mike Barrera B46
START POSITION:	PISTOL:	Feet touching mark. Handgun is loaded and holstered as per rule book.
	PCC:	Feet touching mark. Both hands holding gun. Stock at belt level, muzzle pointing at mark. Loaded and in ready condition per PCC rules.
STAGE PROCEDURE		SCORING
At start signal, engage targets as visible from within the shooting area.		SCORING: COMSTOCK, 28 rounds 130 points
		TARGETS: 14 metric
		SCORED HITS: Best 2 on Paper
		START-STOP: Audible - Last shot
		PENALTIES: Per current edition of USPSA Rule Book.



Stage Notes:	RO Notes: Maintain target and prop position integrity throughout the match.
---------------------	--

Stage 10 – Bay 10

The Y		
RULES: USPSA Rule Book, Current Edition		COURSE DESIGNER: Mike Barrera B46
START POSITION:	PISTOL:	Feet touching mark. Handgun is loaded and holstered as per rule book.
	PCC:	Feet touching mark. Both hands holding gun. Stock at belt level, muzzle pointing at barrel. Loaded and in ready condition per PCC rules.
STAGE PROCEDURE		SCORING
At start signal, engage targets as visible from within the shooting area.		SCORING: COMSTOCK, 26 rounds 130 points
		TARGETS: 13 metric
		SCORED HITS: Best 2 on Paper
		START-STOP: Audible - Last shot
		PENALTIES: Per current edition of USPSA Rule Book.



Stage Notes:	RO Notes: Maintain target and prop position integrity throughout the match.
---------------------	--

Squad Schedules

2017 USPSA Michigan Sectional - Squad Schedule												
Saturday, August 5												
		8:30	9:15	10:00	10:45	11:30	12:15	1:00	1:45	2:30	3:15	4:00
Stage Number	1	101	110	109	108	107	LUNCH	106	105	104	103	102
	2	102	101	110	109	108		107	106	105	104	103
	3	103	102	101	110	109		108	107	106	105	104
	4	104	103	102	101	110		109	108	107	106	105
	5	105	104	103	102	101		110	109	108	107	106
	6	106	105	104	103	102		101	110	109	108	107
	7	107	106	105	104	103		102	101	110	109	108
	8	108	107	106	105	104		103	102	101	110	109
	9	109	108	107	106	105		104	103	102	101	110
	10	110	109	108	107	106		105	104	103	102	101

2017 USPSA Michigan Sectional - Squad Schedule																	
Sunday, August 6																	
		8:30	9:15	10:00	10:45	11:30	12:15	1:00	1:45	2:30	3:15	4:00	5:15	6:15	6:30	7:00	7:30
Stage Number	1	201	210	209	208	207	LUNCH	206	205	204	203	202	SCORES POSTED	SCORES FINALIZED	AWARDS	STAFF PRIZES	TEARDOWN BAYS
	2	202	201	210	209	208		207	206	205	204	203					
	3	203	202	201	210	209		208	207	206	205	204					
	4	204	203	202	201	210		209	208	207	206	205					
	5	205	204	203	202	201		210	209	208	207	206					
	6	206	205	204	203	202		201	210	209	208	207					
	7	207	206	205	204	203		202	201	210	209	208					
	8	208	207	206	205	204		203	202	201	210	209					
	9	209	208	207	206	205		204	203	202	201	210					
	10	210	209	208	207	206		205	204	203	202	201					

Match Staff

Match Director – Mike Barrera

Assistant Match Director – Walt Paegel

Range Master – Gary Johnson

Course Design – Mike Barrera / Walt Paegel

Match Shirts/Graphics – Walt Paegel

Awards Design – Mike Barrera

Registration – Diana Peacock

Chief Stats Officer – Walt Paegel, Mike Barrera

Chronograph – Ken Skeeters, Nick Bies

Mr. Fix It – Mike Friedel, Ken Lane

Michigan Section Coordinator – Mike Barrera

Chief Range Officers

Paul Hernandez
Sveta Paegel
Frank Thompson
John C Baier

Dan Click
Matt Krajniak
Geoff Siembor
Jeff Shanks

Kirk Moellenberg
Jeff Gerak
Craig Tsukayama

Range Officers

Bob Miller
Jeff Shanks
Richard Holmes
Donald Hasselbach
Jon Dalton

Phillip Janicki
Dennis Tucker
Richard Fettermen
Zachary Cooper
Sammy Engle

Lynn Janicki
Gerald Mitchell
Kyle Evans
Danielle Rosebrook
Jim Klugiewicz

Staff and Volunteers

Nick Schultz
Lex Collige
Bob Jenson
David Tamagne
Harry Krass
Michael Sweeney
Nancy Lessaro
Barb Zigler

John Calhoun Jr.
Roger Fitch
Ken Lane
Cheryl Trombley
Connie Gale
K J Lane
Susan Szonte
Vanessa Mulnix

Cat Collige
Mick Holmes
Dennis Modovsky
Mike Warden
Curtis Gale
Yoshiko Sasaki
Nikki Jones