

FTB 204D

High Intensity White Strobe & LED Combination
Split Enclosure with up to 30' Flashhead Separation

Application

The FTB 204D is an FAA type L-856/L-864 high intensity strobe system that provides white flashing lights for day and twilight and red LED flashing lights for night for structures over 500' AGL. For FAA tower types F3 to F6.

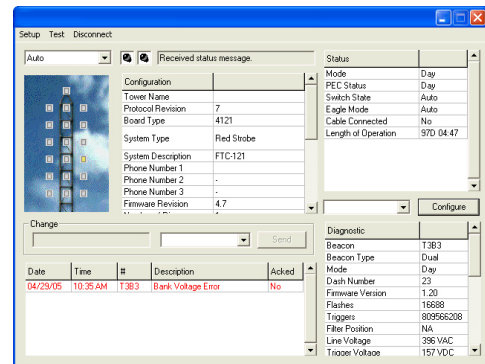


Features/Benefits

- ETL certified for FAA applications
- Certified unidirectional 120° horizontal beam
- Up to 30' separation between PC and FH locates 90% of electronics in an ozone free environment resulting in extended component life
- Full System includes EagleSmart controller, handheld programmer & software
- Available in multiple input voltages
- Custom installation kits and stamped drawings—see flip side
- NEMA 4X stainless steel outdoor rated enclosure
- 24/7/365 Monitoring & Call Center services
- Component level technical support 7am-7pm CST M-F
- Remote diagnostics with POTs connection to FTC 121
- (2) year warranty on all xenon parts including tubes
- (5) year warranty on LED fixtures
- Listed on the FAA [Buy American Act](#) registry

EagleSmart

FTC 121 Eagle Controller – On site or remote diagnostics, programming and monitoring. Digital display with drop down menus.



Certified and Listed to meet all the environmental and performance criteria for: FAA Type L-856/L-864; FAA-AC 150/5345-43F. Manufactured to meet or exceed specifications for Transport Canada K310B, ICAO Annex 14 Type A (white); DGAC

FTB 204D High Intensity White Strobe & LED Combination Split Enclosure with up to 30' Flashhead Separation

Custom Conduit and Wire Kits

For over 40 years Flash has designed and supplied FAA and NEC compliant electrical systems for towers, chimneys, and other structures. Our expertise includes lighting systems, elevator circuits, utility circuits, AC electrical distribution platform circuits, area lighting, fiber optic, telco, communication, lift booms, and other needs. State engineering stamped drawings for the United States and some US properties are available as an option.

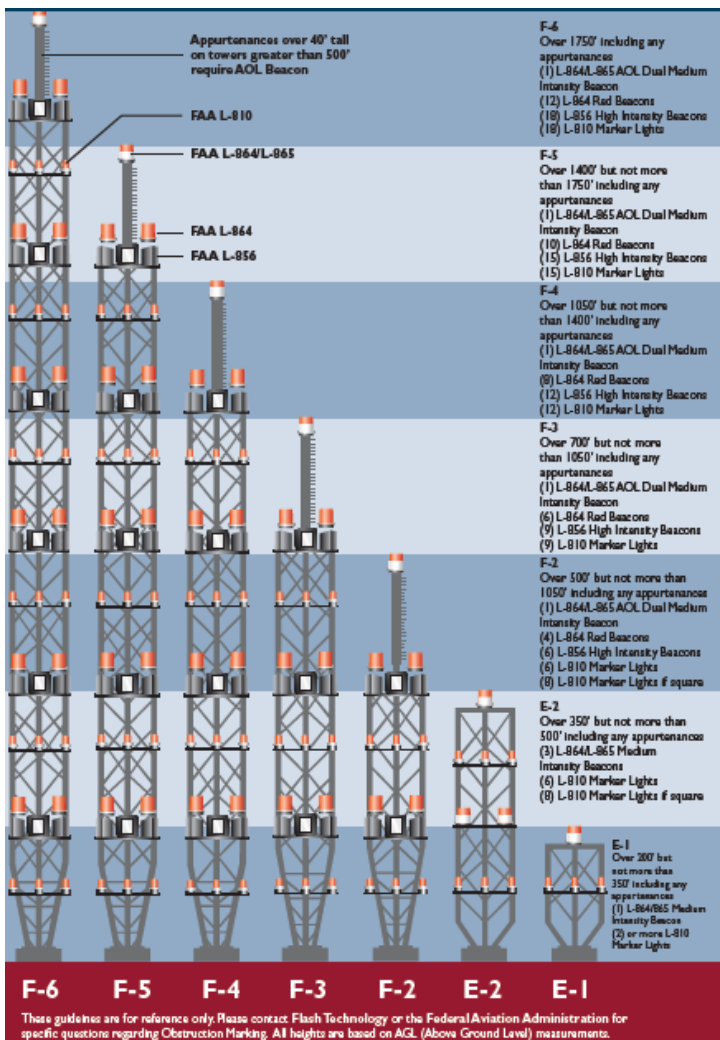


Diagram from FAA Advisory Circular AC 70/7460-1K Change 2, A1-18. The FAA determination for these towers are: Chapters 2, 4, 9

These guidelines are for reference only. Please contact Flash for specific questions regarding obstruction marking.