

# 2018 Easy Rider Run

The Easy Rider Run scheduled for Saturday, January 27<sup>th</sup> was cancelled due to the weather. The run was rescheduled for Sunday, January 28<sup>th</sup> for those willing and able to take a chance on the weather. The turn out was 7 bikes and 9 members.



The "Easy Rider" picture above shows the graveyard and the church steeple.

The run included a lunch stop at N.O. Style Po-Boys, 3874 Hwy 1, Raceland, LA 70394.

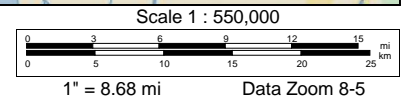






Data use subject to license.  
 © DeLorme. Topo USA® 8.  
 www.delorme.com

**Easy Rider Run  
 2018**




	Dist	Turn		Road	Exit	Total Time	Total Dist
		Start	at	Food N Fun		00:00:00	0.00 mi
		Go straight (W)	on	SR 14 (Center St Highway 14)		00:00:00	0.00 mi
	in 0.23 mi	Turn left (SE)	on to	W US 90 ramp		00:00:23	0.23 mi
	in 0.69 mi	Keep right (SE)	on to	US 90 (E Highway 90)		00:01:13	0.92 mi
	in 0.02 mi	Go straight (SE)	on to	N United States Highway 90		00:01:14	0.94 mi
	in 1.15 mi	Go straight (SE)	on to	United States Highway 90		00:02:33	2.08 mi
	in 0.07 mi	Go straight (ESE)	on to	US 90 (E Highway 90)		00:02:37	2.15 mi
	in 1.54 mi	Keep right (ESE)	on	US 90 (E Highway 90)		00:04:17	3.69 mi
	in 20.57 mi	Turn left (ENE)	on to	SR 3211 (Northwest Blvd)		00:31:22	24.25 mi
	in 0.15 mi	Stop	at	Northwest Auto Truck Plaza		00:31:38	24.41 mi
		Go straight (NE)	on	SR 3211 (Northwest Blvd)		00:46:38	24.41 mi
	in 1.65 mi	Turn right (SE)	on to	SR 182 (W Main St)		00:49:41	26.05 mi
	in 1.08 mi	Turn right (SE)	on to	SR 182 (Main St)		00:52:36	27.13 mi
	in 11.34 mi	Turn left (E)	on to	US 90 (SR 182)		01:13:52	38.47 mi
	in 21.61 mi	Keep right (E)	on to	SR 662 ramp		01:42:37	60.08 mi
	in 0.38 mi	Turn right (SSE)	on to	SR 662		01:43:11	60.46 mi
	in 0.21 mi	Turn left (ENE)	on to	SR 182 (Bayou Black Dr)		01:43:32	60.67 mi
	in 2.91 mi	Keep left (ENE)	on to	SR 20 (Highway 20)		01:48:27	63.58 mi
	in 12.16 mi	Turn right (SSE)	on to	SR 24 (Highway 24)		02:08:59	75.74 mi
	in 0.15 mi	Keep left (NE)	on to	W Main St		02:09:14	75.89 mi
	in 0.07 mi	Keep left (NNW)	on to	SR 24 (Park Ave)		02:09:23	75.96 mi
	in 0.14 mi	Go straight (N)	on to	SR 20 (W Main St Park Ave)		02:09:36	76.10 mi
	in 3.90 mi	Turn right (ESE)	on to	SR 1 (E 1st St)		02:19:12	80.00 mi
	in 12.85 mi	Turn right (S)	on to	Arjonilla St		02:43:43	92.85 mi
	in 0.08 mi	Turn left (E)	on to	Nies St		02:43:53	92.93 mi
	in 0.06 mi	Stop	at	Easy Rider Cemetary #1		02:44:02	92.99 mi
		Go straight (E)	on	Nies St		03:14:02	92.99 mi
	in 0.08 mi	Go straight (N)	on to	Simon St		03:14:13	93.07 mi
	in 0.10 mi	Turn right (ESE)	on to	SR 1 (Highway 1)		03:14:27	93.17 mi
	in 1.48 mi	Stop	at	New Orleans Style Po Boys		03:17:33	94.65 mi
		Go straight (SE)	on	SR 1 (Highway 1)		04:02:33	94.65 mi
	in 2.26 mi	Turn right (WSW)	on to	US 90 ramp		04:08:40	96.91 mi
	in 4.15 mi	Keep right (WNW)	on to	SR 182 ramp		04:13:27	101.06 mi
	in 0.22 mi	Keep left (WNW)	on	SR 182 ramp		04:13:46	101.29 mi
	in 0.05 mi	Keep left (SW)	on to	SR 182		04:13:50	101.34 mi
	in 6.90 mi	Go straight (WSW)	on to	SR 3040 Spur		04:25:33	108.24 mi
	in 3.20 mi	Go straight (WNW)	on to	SR 311 (SR 3040 Spur Highway 311 S Hollywood		04:34:09	111.43 mi
	in 2.53 mi	Keep left (SSW)	on to	PR 23 (Savanne Rd)		04:38:25	113.97 mi
	in 3.02 mi	Stop	at	Savanne Food & Gas		04:45:37	116.98 mi
		Go straight (SSW)	on	PR 23 (Savanne Rd)		05:00:37	116.98 mi
	in 0.13 mi	Turn right (WNW)	on to	SR 182 (Bayou Black Dr)		05:00:56	117.12 mi
	in 17.60 mi	Go straight (W)	on to	<unnamed>		05:30:40	134.71 mi
	in 3.05 mi	Go straight (WNW)	on to	US 90 Bus (SR 182)		05:37:56	137.76 mi
	in 7.55 mi	Go straight (WSW)	on to	SR 182 (Highway 182)		05:54:52	145.31 mi
	in 1.51 mi	Turn right (WNW)	on to	SR 182		05:58:48	146.82 mi
	in 10.28 mi	Go back (WSW)	on to	SR 182 (Highway 182 W)		06:22:48	157.11 mi
	in 2.79 mi	Go straight (S)	on to	<unnamed>		06:27:30	159.90 mi
	in 0.12 mi	Turn right (NW)	on to	US 90 (SR 182)		06:27:41	160.01 mi

Data use subject to license.

© DeLorme. Topo USA® 8.

www.delorme.com

		Dist	Turn		Road	Exit	Total Time	Total Dist
	in	4.91 mi	Go straight (NW)	on to	<unnamed>		06:34:00	164.92 mi
	in	1.98 mi	Keep right (WNW)	on to	US 90		06:38:43	166.90 mi
	in	5.88 mi	Turn right (ENE)	on to	SR 3211 (Northwest Blvd)		06:48:22	172.78 mi
	in	0.06 mi	Finish	at	Northwest Auto Truck Plaza		06:48:28	172.84 mi

**Total Time: 06:48:28 Total Distance: 172.84 mi**