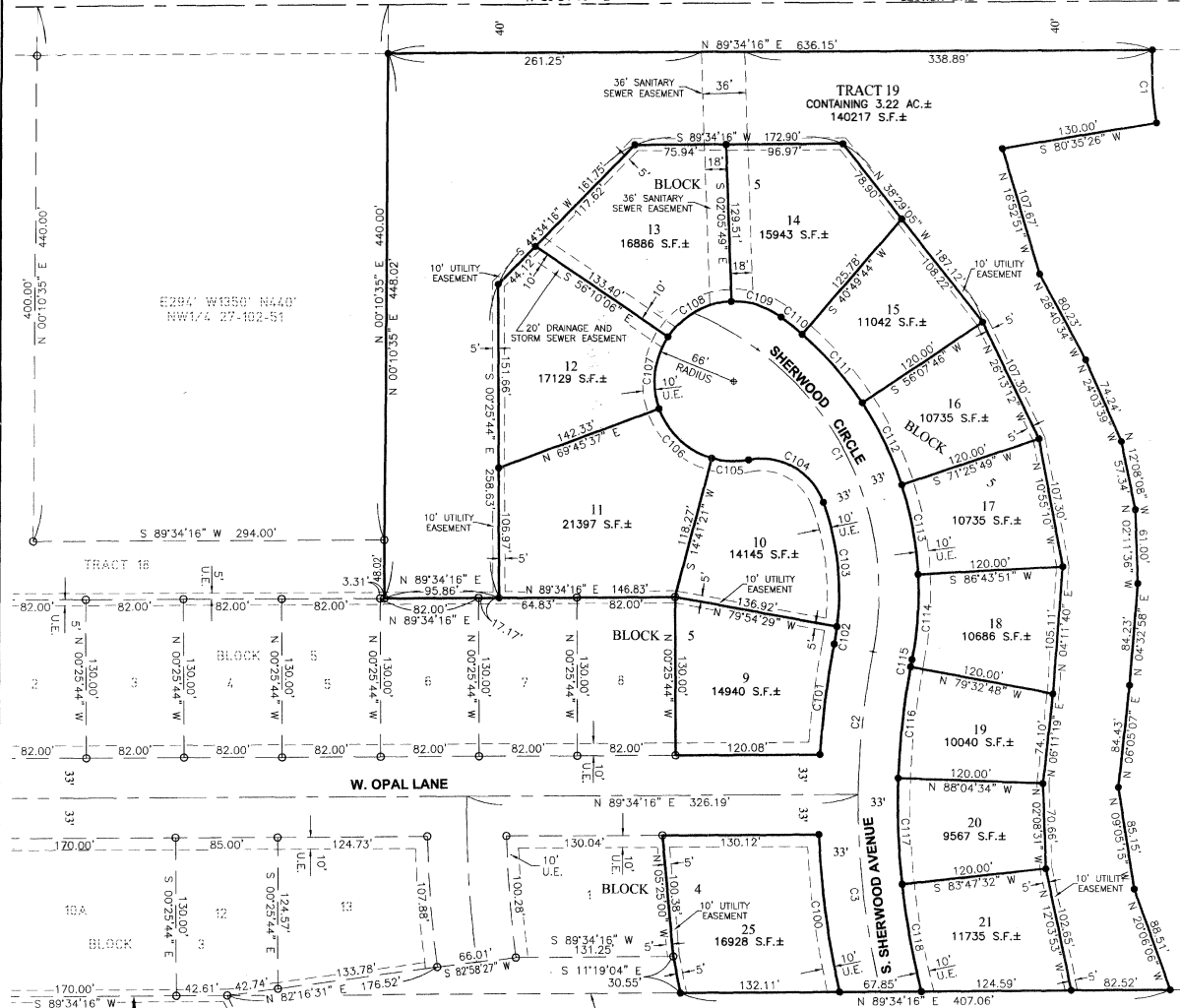


# PLAT OF LOT 25 IN BLOCK 4; AND LOTS 9, 10, 11, 12, 13, 14, 15, 16, 17, 18, 19, 20 AND 21 IN BLOCK 5; AND TRACT 19 OF CRESSWOOD ADDITION

AN ADDITION TO THE CITY OF HARTFORD, MINNEHAHA COUNTY, SOUTH DAKOTA

E. MICKELSON ROAD  
N 89°34'16" E

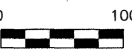
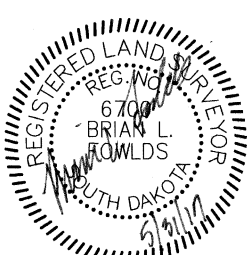
SECTION LINE



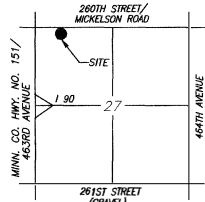
CURVE	RADIUS	ARC LENGTH	CHORD LENGTH	CHORD BEARING	DELTA ANGLE
C1	250.00'	344.65'	317.53'	N 28°24'24" W	78°51'01"
C2	651.24'	117.82'	117.66'	S 05°50'07" W	102°1'58"
C3	651.24'	164.38'	163.94'	S 06°34'44" E	142°7'43"
C100	684.24'	131.24'	131.04'	S 07°59'30" E	105°59'23"
C101	684.24'	91.39'	91.32'	S 07°11'32" W	7°39'08"
C102	217.00'	14.69'	14.69'	S 09°04'42" W	3°52'47"
C103	217.00'	104.03'	103.04'	S 06°35'43" E	27°28'05"
C104	55.00'	77.65'	71.36'	N 60°46'36" W	80°53'41"
C105	66.00'	31.00'	30.72'	S 87°46'03" E	26°54'46"
C106	66.00'	62.29'	60.00'	S 47°16'32" E	54°04'17"
C107	66.00'	62.29'	60.00'	S 06°47'45" W	54°04'17"
C108	66.00'	62.29'	60.00'	S 60°52'02" W	54°04'17"
C109	66.00'	44.19'	43.37'	N 72°54'59" W	38°21'40"
C110	283.00'	22.55'	22.54'	N 51°27'13" W	4°33'53"
C111	283.00'	75.57'	75.35'	N 41°31'15" W	15°18'02"
C112	283.00'	75.57'	75.35'	N 26°13'12" W	15°18'02"
C113	283.00'	75.57'	75.35'	N 10°55'16" W	15°18'02"
C114	283.00'	70.57'	70.39'	N 03°52'28" E	141°7'15"
C115	618.24'	8.10'	8.10'	S 10°44'09" W	6°33'54"
C116	618.24'	92.03'	91.95'	S 06°11'19" W	8°31'45"
C117	618.24'	87.75'	87.67'	S 02°08'31" E	8°07'55"
C118	618.24'	89.89'	89.81'	S 10°22'23" E	8°19'50"

CURVE	RADIUS	ARC LENGTH	CHORD LENGTH	CHORD BEARING	DELTA ANGLE
C1	284.00'	59.52'	59.41'	S 03°24'19" E	12°00'30"

- LEGEND:**
- SET 5/8" REBAR W/CAP #6700
  - FOUND MONUMENT
  - AC. ACRES
  - S.F. SQUARE FEET
  - U.E. UTILITY EASEMENT
  - R/W RIGHT-OF-WAY
  - N.T.S. NOT TO SCALE
  - PREVIOUSLY PLATTED LINE
  - - - EASEMENT LINE



SCALE: 1"=100'  
SUBMISSION DATE: MAY 25TH, 2017



**AREA MAP** N.T.S.  
SECTION 27, T102N, R51W  
5TH P.M.

**NOTES:**  
BASIS OF BEARINGS IS ASSUMED  
THIS PLAT WAS PREPARED WITHOUT THE BENEFIT OF A TITLE COMMITMENT.  
EASEMENTS OF RECORD WERE NOT RESEARCHED AND ARE NOT SHOWN ON THE PLAT.

**PREPARED BY:**

**Midwest Land Surveying, Inc.**  
Land Surveying and GPS Consulting  
211 E. 14th Street Suite 100  
Sioux Falls, South Dakota 57104  
Phone: (605) 339-8901 FAX: (605) 274-8951