

WASHINGTON MASONIC NATION

WORKERS OF INIQUITY MASQUERADING AS AGENTS OF LIGHT

The pyramid configuration is off by 6° and is interwoven by the snake that appears to hold the whole complex together. This would render the symbology of Lucifer, the Dragon from whom the coming AntiChrist and False Prophet derive their power. In the ancient pyramid complexes, the buildings like that of Chechen Itza were directly associated with the descending Shining Serpent. The pyramids were 9 steps in height as is the main pyramidion of the Masonic Memorial to Washington; it incorporates the same principle of the 'Phoenix' running down the stairs of the pyramid. What the recurring them and dates of this is to occur on is the Year of Light 5776. This is when the Temple, the capstone comes down from Heaven to complete their Temple of Light. The Masonic Memorial has a mural of the Ark of the Covenant and how the Luciferians are salivating to have it be in their possession to present it to their Dark Lord, Lucifer to sit on in the very Holy of Holies that the Memorial is constructed to represent, the anthropomorphic man of the Temple of Solomon.

The Rapture Event?

SOLAR ECLIPSE A partial solar eclipse occurs on Sep 13, 2015	
TYPE OF Jacob's Ladder	YEAR 5776 stars Sep 13, 2015 Great Pyramid Pyramidion 5776 inches
POSSIBLE RAPTURE EVENT Apparent translation of Bride of Christ	APPARENT BLAZING COMET Sudden Destruction for the unawares
ADVENT OF ANTICHRIST A revealing and presentation	

5776

Lucifer's Eye-Stone 'MASON'S'

Bless Our Work

Alluded to having Right eye blinded in Angelic Conflict with Arch Angel Michael.

72 Blocks | 13 Levels
Ancient occult symbol

spells out "MASON"
MAY 1, 1776

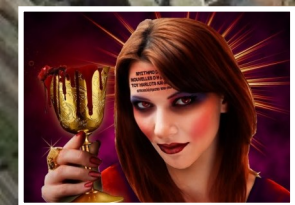
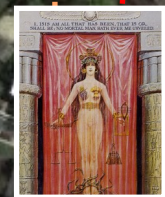


New World Order

ISIS

LUCI THE LIGHT BEARER

6°



5776

THE SERPENT

The Dragon coiling down the pyramid like the Shining Serpent of Chechen Itza steps on the Spring Vernal Equinox. The symbology is a reversed rendition of the Phoenix rising up to the capstone.

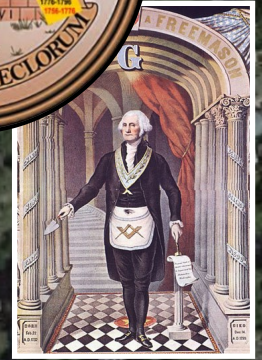
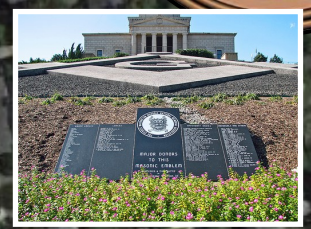
THE CHALICE

It is from the capstone of the All Seeing Eye of Lucifer that the spider weaves down to connect and nourish the Anti-Christ womb to be birthed. The Chalice is what contains the blood, in this case for the Luciferian, it has been the Blood of the Saints. The 'Great Work' of Lucifer's servants perhaps will be completed in 5776 perhaps that the capstone represents from the Great Pyramid pattern of the pyramidion. The 5776 is also inverted as that is the latitude of the point at which the pyramidion of the Masonic Memorial is centered on.



THE SPIDER

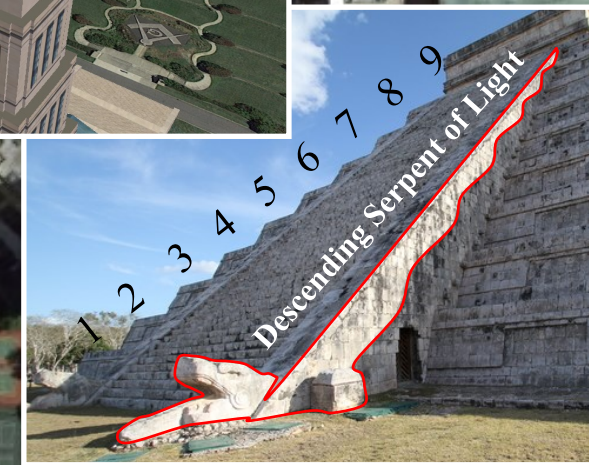
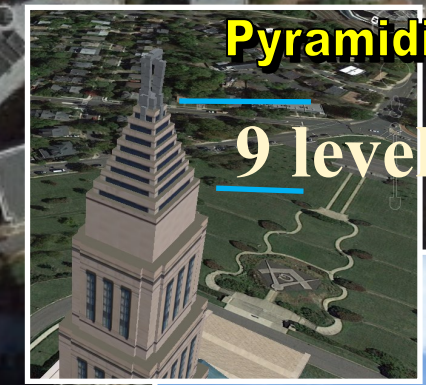
5776 - 1776 = (4)000



The black spider is a clever marking of several Luciferian esoteric symbols in one. From an eastern perspective, the complex depicts a spider that is nourishing or birthing the Masonic Memorial building. It is in phi ratio. From a western perspective, the complex conjures up a Chalice that mock the LORD's Last Supper. In many Satanic human sacrificial rites, the Chalice is used to drink the victim's blood from. The next symbol encrypted is the outstretched owl that is the symbol of Molech and is associated with Isis, Minerva and Diana, all the same. The spider appears to be weaving down the web line from the capstone that gives it its authority and work. The Chalice is a symbol for the womb from where the AntiChrist is to be birthed from, spewed out of the mouth like the demonic Frogs of the book of Revelation that the Beast and False Prophet produce.

Pyramidion

9 levels



TEMPLE TO JUPITER

1776