

**Neumiller Woods
Somers, Kenosha County, WI
2012 Field Photographs**

(5/3/12, 5/8/12, 7/11/12, 9/4/12, 9/26/12)

Southeast Corner of Site – Location 1
(See map on last page of Appendix 3)



5/8/12



7/11/12



9/4/12

Southwest Corner of Site – Location 2 (See map on last page of Appendix 3)

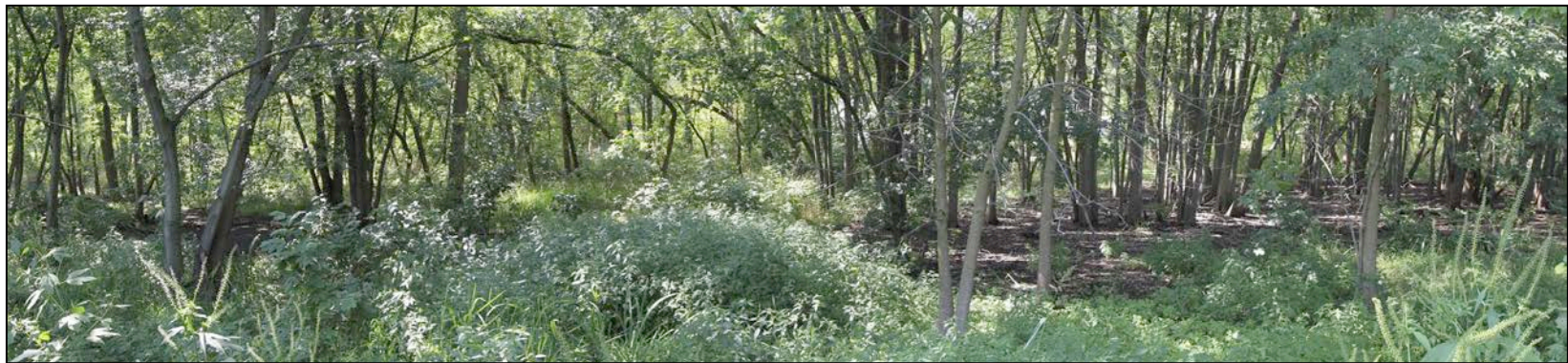
5/8/12



7/11/12



9/4/12





**Northern Half of Site,
Somers Branch of Pike River (intermittent)**
Location 3 (See map on last page of Appendix 3)

5/8/12

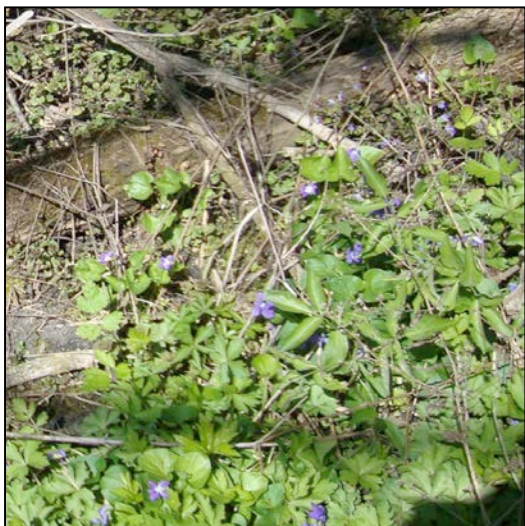


7/11/12



9/4/12

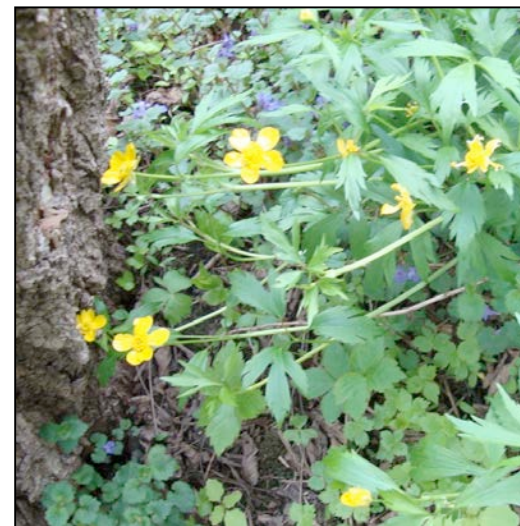
Spring-Blooming Wildflowers – 5/3/12



Violet (*Viola* spp.)



False Solomon's-seal (*Maianthemum racemosum*)



Creeping buttercup (*Ranunculus repens*)

Summer-Blooming Wildflowers – 7/11/12



Orange jewelweed (*Impatiens capensis*)



Swamp milkweed (*Asclepias incarnata*)



Bittersweet nightshade (*Solanum dulcamara*)

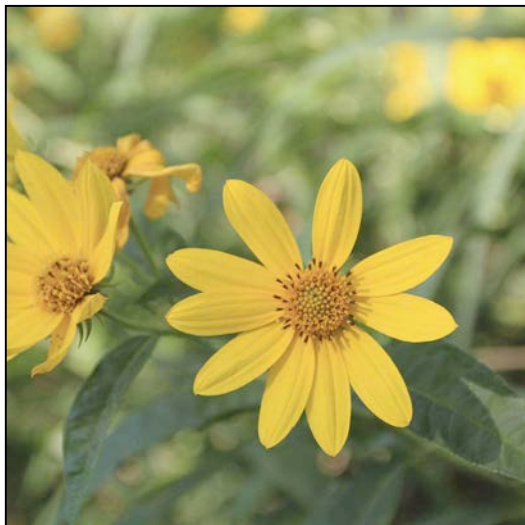


Wild garlic (*Allium canadense*)



American germander (*Teucrium canadense*)

Summer-Blooming Wildflowers – 9/4/12



Saw-tooth sunflower (*Helianthus grosseserratus*)

Dotted smartweed (*Persicaria punctata*)

Brown-eyed Susan (*Rudbeckia triloba*)



Spotted lady's-thumb (*Persicaria maculosa*)



Canada goldenrod (*Solidago canadensis*)

Fall-Blooming Wildflowers – 9/26/12



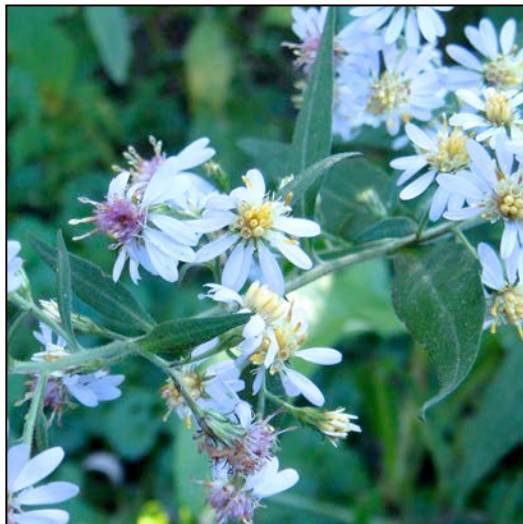
Panicled aster (*Aster lanceolatus*)



Frost aster (*Aster pilosus*)



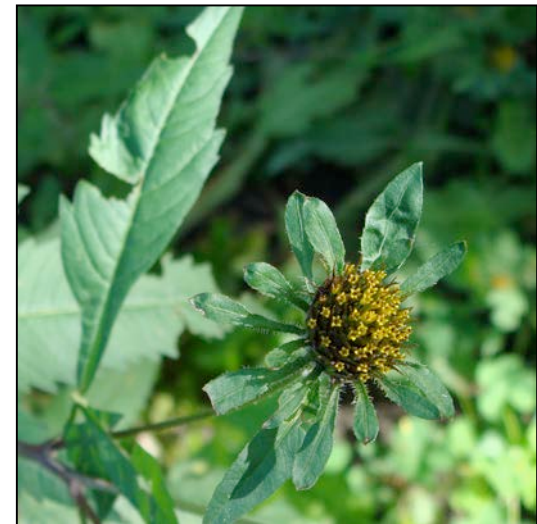
Pennsylvania knotweed (*Polygonum pensylvanicum*)



Arrow-leaved aster (*Aster sagittifolius*)



Clearweed (*Pilea pumila*)



Common beggar-ticks (*Bidens frondosa*)

Native Plants on Site



Silver maple (*Acer saccharinum*)



Fowl manna grass (*Glyceria striata*)



Fowl manna grass leaves and stem



Ohio buckeye (*Aesculus glabra*)



Upright carrion (*Smilax ecirrhata*)



Black snakeroot (*Sanicula marilandica*)

Native Plants Continued



Assorted sedges (*Carex* spp.)



Berries and leaf of bittersweet nightshade (*Solanum dulcamara*) – POISONOUS!



False Solomon's-seal – flowers on top (*Maianthemum racemosum*)



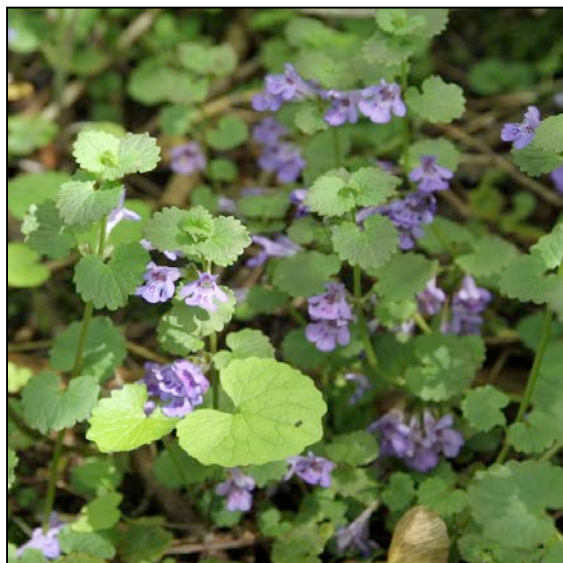
Elderberry (*Sambucus canadensis*)



Giant Solomon's-seal – flowers underneath (*Polyonatum biflorum*)

Invasive Plants on Site

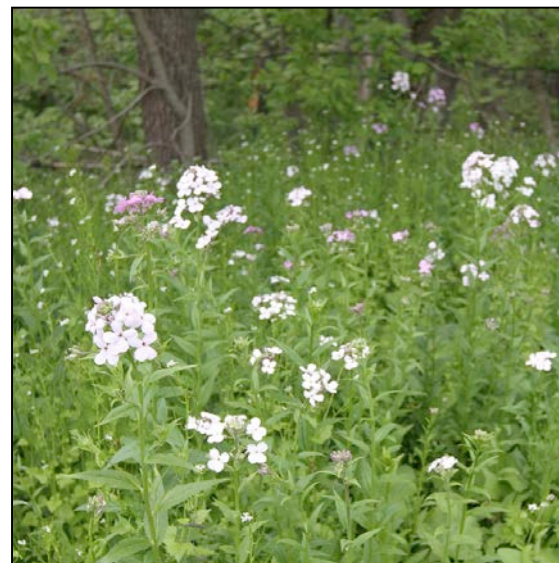
Reed canary grass (*Phalaris arundinacea*)
covers about 1.2 acres of the site
(total site area = 7.8 acres)



Creeping-Charlie (*Glechoma hederacea*)

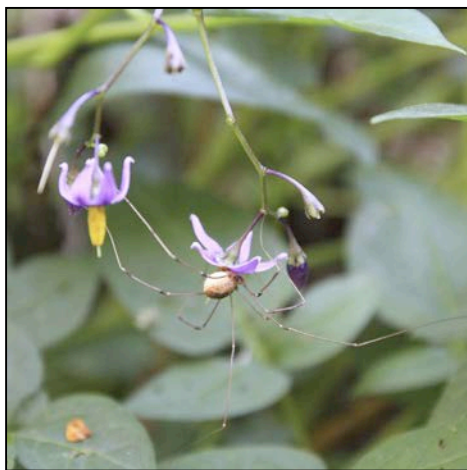


Garlic mustard (*Alliaria petiolata*)



Dame's rocket (*Hesperis matronalis*)

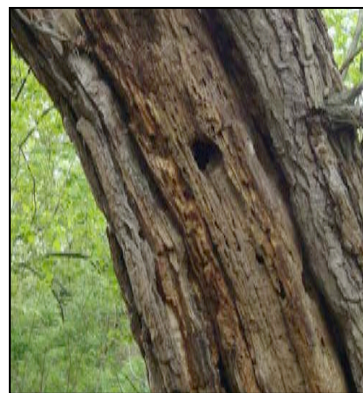
Wildlife



Daddy long-legs on bittersweet
nightshade flower



Bee on goldenrod flowers



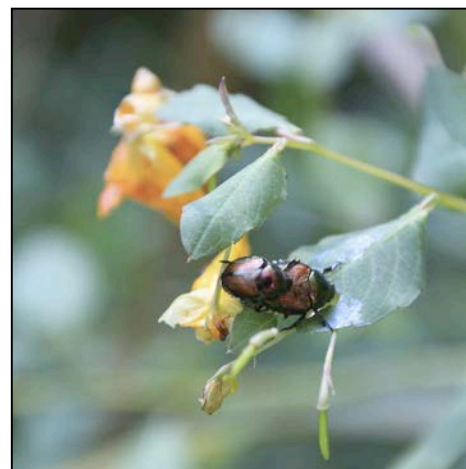
Woodpecker holes in
dead tree trunk



Animal-eaten corn cob
found in woods



Grasshopper on tiger lily flower
(non-native plant)



Japanese beetles on jewelweed plant



Fungi growing on decaying tree trunk

Site Features



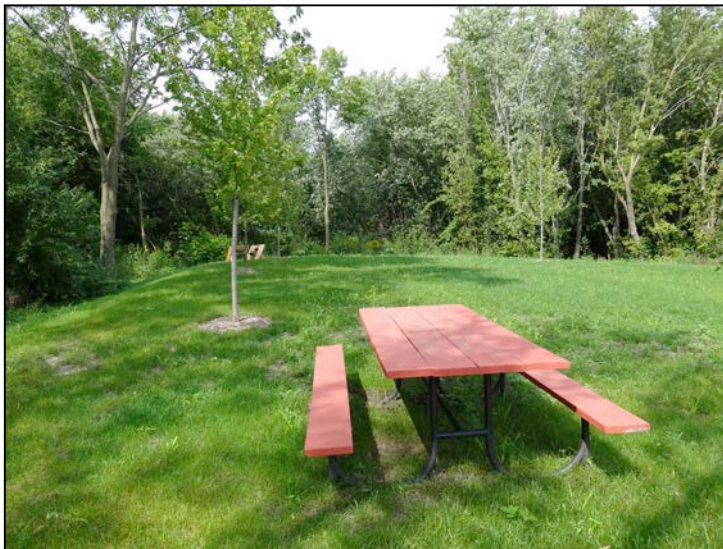
Entrance sign next to parking lot



Parking lot along CTH E



Newly planted tree on lawn



Grassy lawn and picnic table next to parking lot



Farm field in northern part of site 9/26/12

Hydrology Features



Somers Branch of Pike River – dry stream bed 9/4/12.
A large berm is located along the north stream bank
(picture is facing west; berm along right bank)



Person on top of berm. Berm is
located along north bank of Somers
Branch stream.



Person behind berm, standing at an
elevation four feet below top of berm.

Hydrology Features Continued



Culvert along southern edge of site 9/4/12



Culvert along eastern edge of site 9/4/12



Groundwater sheen on water in spring



Sewer pipe along western edge of site

Locations and Orientations for Site Photographs (Pages 1-3)

